

Catalogue of the Pyrrhocoroidea (Hemiptera: Heteroptera) from Argentina

MELO, M. Cecilia ^{1,3} & Pablo M. DELLAPÉ ^{2,3}

¹Departamento Sistemática, Instituto de Limnología "R. A. Ringuelet" (ILPLA), UNLP-CONICET, CC 712 (B1900FWA) La Plata, Buenos Aires, Argentina. cecimelo@ilpla.edu.ar.

²División Entomología, Facultad de Ciencias Naturales y Museo, Universidad Nacional de La Plata, Paseo del Bosque, B1900FWA La Plata, Argentina. pdellape@fcnym.unlp.edu.ar.

³Consejo Nacional de Investigaciones Científicas y Técnicas (CONICET)

Catálogo de los Pyrrhocoroidea (Hemiptera: Heteroptera) de la Argentina

■ **ABSTRACT.** The superfamily Pyrrhocoroidea from Argentina is catalogued. The included families, Pyrrhocoridae and Largidae, represent a total of 22 species. For each of them, all the bibliographic references with the locality data and host plants and new records from the material studied at the Museo de La Plata collection are included; the type species of each genus is also mentioned. Maps and a table with the host plants arranged in families are also included.

KEY WORDS. *Dysdercus*. *Largus*. *Rosaphe*. *Acinocoris*. *Theraneis*. *Thaumastaneis*.

■ **RESUMEN.** Se presenta un catálogo de la superfamilia Pyrrhocoroidea de la Argentina. Las dos familias incluidas, Pyrrhocoridae y Largidae, constituyen un total de 22 especies. Para cada especie se incluyen todas las referencias bibliográficas con la localidad y planta hospedadora, y nuevos registros de material depositado en la colección del Museo de La Plata; también se incluye la especie tipo de cada género mencionado. Además, se adjuntan mapas distribucionales y una tabla con las plantas hospedadoras organizadas en familias.

PALABRAS CLAVE. *Dysdercus*. *Largus*. *Rosaphe*. *Acinocoris*. *Theraneis*. *Thaumastaneis*.

INTRODUCTION

The superfamily Pyrrhocoroidea, infraorder Pentatomomorpha, includes two families: Largidae and Pyrrhocoridae. Both families are present in all biogeographical regions of the world, although they are more diverse and abundant in tropical and subtropical areas. Most Pyrrhocoroidea are phytofagous, feeding on reproductive parts of plants; and they live on the ground or on

bushes.

Dellapé & Melo (in press) dealt with diverse aspects about the knowledge of the superfamily in Argentina, e.g. cytogenetic, phylogenetic, and agro-economic importance, including a summary on morphology, biology, and taxonomic history, a diagnosis of all the genera and a key to the species recorded from Argentina.

In this contribution, we present a catalogue for the five genera and 12 species



Fig. 1. Acronyms and location of Argentinean provinces.

of Largidae, and the 10 species of the only Neotropical genus of Pyrrhocoridae, *Dysdercus* (Guérin-Ménéville), recorded from Argentina. For each species, we include all the bibliographic references with the locality data and host plants, summarized in table I, and new records from material studied from the Museo de la Plata collection (MLP); also the type species of each genus is mentioned. Acronyms used for Argentinean provinces are (Fig. 1): Buenos Aires (Bs.As.), Catamarca (Cm.), Chaco (Cha.), Chubut (Chu.), Córdoba (Cba.), Corrientes (Cs.), Entre Ríos (E.R.),

Formosa (Fo.), Jujuy (Ju.), La Pampa (L.P.), La Rioja (L.R.), Misiones (Mnes.), Mendoza (Mza.), Neuquén (Nq.), Río Negro (R.N.), Salta (Sal.), Santa Cruz (S.C.), Santiago del Estero (S.E.), Santa Fe (S.F.), San Juan (S.J.), San Luis (S.L.), Tierra del Fuego (T.F.), and Tucumán (Tuc.).

A table (Table II) with the host plants' scientific and vernacular names, arranged in families is included; it was elaborated following Parodi & Dimitri (1988), Zuloaga *et al.* (2008), and the web page <http://www>.

tropicos.org. We present distributional maps, most coordinates were determined through the use of gazetteers, although some localities were georeferenced with Google Earth. When only provincial data was available, a point in the centre of the province was included in the map. Maps were produced using ArcMap 10 geographic information system software.

RESULTS

Family Largidae Subfamily Larginae Tribe Largini

Largus Hahn, 1831

(Figs. 2, 3)

Type species: *Cimex humilis* Drury, 1782. By monotypy.

Largus balteatus Stål, 1870

(Fig. 2)

Largus balteatus: Dellapé *et al.*, 2010: 60 [Fo.: Río Pilcomayo, 50 km W Clorinda; Puerto Pilcomayo, Garcete-Cué; Clorinda]

Known distribution: Argentina, Bolivia, Brazil, and Peru (Hussey, 1929; Dellapé *et al.*, 2010).

Largus fasciatus Blanchard, 1843

(Fig. 3)

Largus fasciatus Blanchard, 1843: 220 [Cs.]
Largus fasciatus: Berg, 1878: 263-264 [Cs., E.R.: Concordia]

Largus fasciatus: Lethierry & Severin, 1894, 2: 238 [Cs., San Sago d'Estrella (sic, it probably refers to Santiago del Estero province)]

Largus fasciatus: Torre Bueno & Thomas, 1915: 159 [Cha., Cs., E.R., S.E.: Río Salado]

Euryopthalmus fasciatus: Pennington, 1921: 20 [Litoral, centre, Andean]

Euryopthalmus fasciatus: Hussey, 1929: 16 [Argentina]

Euryopthalamus (sic) *fasciatus*: Bosq, 1937: 119 [Bs. As., Cba.: Los Cisnes. Cs., E.R., S.F., S.E.] [Host plant: "peaches"]

Euryopthalmus fasciatus: Hayward, 1942: 35 [Tuc.] [Host plant: "peaches"]

Euryopthalmus fasciatus: Hayward, 1960: 33 [Tuc.] [Host plant: "peaches"]

Largus fasciatus: Quintanilla *et al.*, 1967-1968: 34 [E.R.: Colón; Diamante; La Paz; Paraná; Tala] [Host plants: "alfalfa", "cotton", "morning glory", "cardoon", "sunflower", "wild fennel", "pumpkin"]

Euryopthalmus fasciatus: Viana & Williner, 1972: 27 [Cba.: Carlos Paz, Río San José; El Sauce]

Largus fasciatus: Quintanilla *et al.*, 1975-1976: 127 [Cs.: Esquina] [Host plants: "eggplant"]

Largus fasciatus: Viana & Williner, 1978: 76 [Cba.: C. Paz; Villa Gral. Belgrano. S.L.: Carolina]

Largus fasciatus: Quintanilla *et al.*, 1981: 155 [Mnes.: Alem; San Martín; Montecarlo; San Javier] [Host plants: "sweet potato", "corn", "cassava", "yerba mate"]

Largus fasciatus: Di Iorio, 2004a: 247 [Cba., Cs., E.R., Mnes., S.E.] [Host plants: *Cucurbita maxima* Duch., *Cynara cardunculus* L., *Flaveria bidentis* (L.) O. Kuntze, *Phoeniculum vulgare* Mill. var. *capillaceum* Gilib., *Gossypium hirsutum* L., *Helianthus annuus* L., *Ilex paraguayensis* St. Hil, *Ipomoea batatas* (L.) Lam., *Ipomoea cairica* (L.) Sweet, *Manihot esculenta* Crantz, *Medicago sativa* L., *Prunus persica* (L.) Batsch., *Salpichroa organifolia* (Lam.) Tell., *Senecio grisebachii* Bak., *Solanum melongena* L., *Zea mays* L.]

Known distribution: Argentina and Brazil (Hussey, 1929).

Material examined: **Buenos Aires**: 1 female, Bosq col.; 1 male, Baradero, [-33.7966, -59.5208], F. Lynch col., Berg coll.; 1 male, 5 females, Salinas Chicas, [-38.7500, -62.8833], 09/III/2008, Dellapé, P. col.; 1 female, Villarino, Chasicó, [-38.6666, -63.0166], II-[19]67, Contreras col.; **Catamarca**: 4 males, 2 females, Catamarca; 1 female, 6-II-1897, Bruch col.; **Chaco**: 1 male, Roque Sáenz Peña, [-26.7833, -60.4500], XII-[19]39, Bosq col.; 5 males, 4 females, same locality, III-[19]40, Denier col.; 1 male, 1 female, same locality, VII-[19]39, Baez col., Denier coll.; 1 female, Resistencia, [-27.4500, -58.9833], III-[19]36, Denier coll.; **Córdoba**: 1 female,

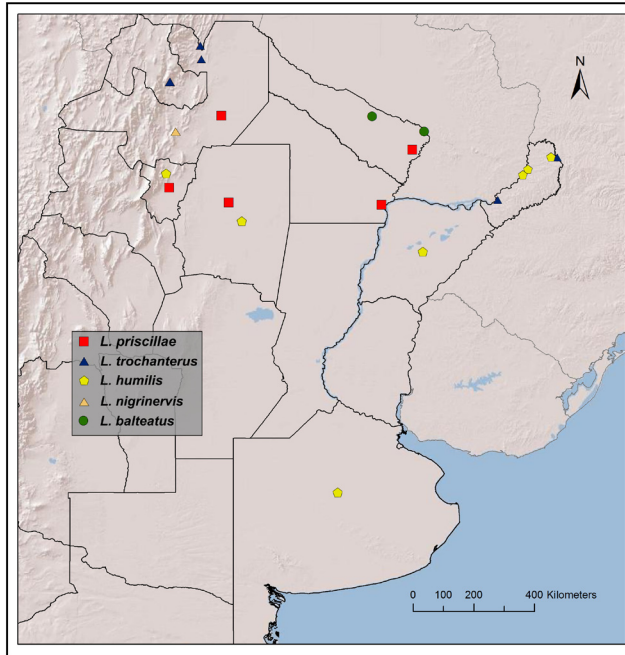


Fig. 2. Distribution in Argentina of *Largus priscillae*, *L. trochanterus*, *L. humilis*, *L. nigrinervis* and *L. balteatus*.

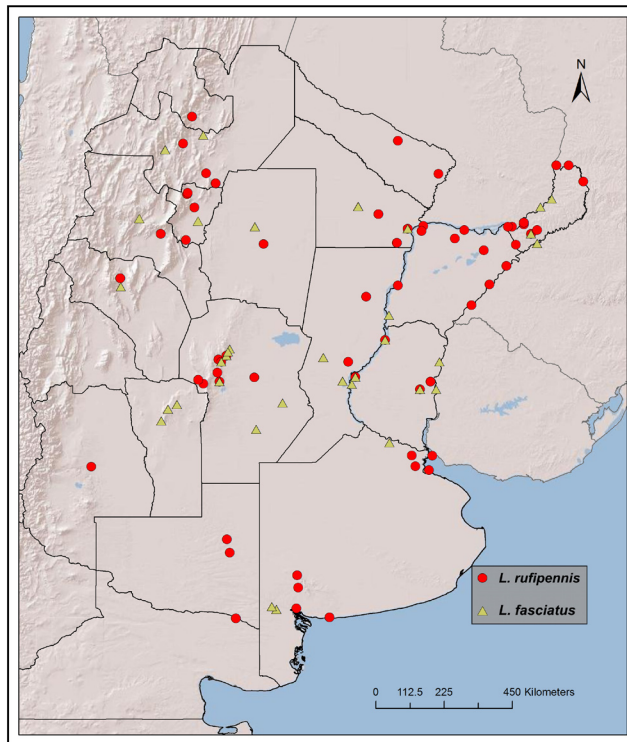


Fig. 3. Distribution in Argentina of *Largus rufipennis* and *L. fasciatus*.

Berg coll.; 1 female, Cabana, [-31.2166, -64.3666], 19/I/1926; 1 male, same locality, 30/XII/1926; 1 male, Bell Ville, [-32.6166, -62.7000], 24/I/1937, Birabén col.; 1 male, Alta Gracia, La Granja, [-31.0166, -64.2666], I-[19]38, Bruch col.; **La Rioja**: 3 females, La Rioja, Hunter col., Denier coll.; 1 female, Chilecito, [-29.1666, -67.5000]; **Salta**: 1 female, Güemes, [-24.6666, -65.0500], IV-[19]05, Martínez & Bezzi col.; 3 male, 2 females, Cachi, [-25.1000, -66.1833], 17/I/2009, F. Brusa col.; **San Luis**: 1 male, Suyuque, [-33.1500, -66.3000], XII-[19]33, Vignati col.; 1 male, sierra de San Luis, [-32.6666, -65.8333], II-[19]33, Vignati col.; **Santa Fe**: 2 males, Coronda, [-31.9666, -60.9166], 21/XI/1939, Birabén & Bezzi col.; 1 female, Coronda, [-31.9666, -60.9166], 21/XI/1939, Birabén & Bezzi col.; 1 male, Rafaela, [-31.2666, -61.4833], 02/XI/1932, Denier coll.; **Santiago del Estero**: 3 females, Santiago del Estero, Wagner col.; 5 females, Rio Salado, [-27.3826, -63.5165], Wagner col., Bosq coll.; **Tucumán**: 1 female, Tucumán, XI-1899, Bruch col.

Largus humilis (Drury, 1782)

(Fig. 2)

Largus humilis: Berg, 1878: 263 [Mnes.]
Euryophthalmus humilis: Hussey, 1929: 16 [Argentina]
Euryophthalmus humilis: Pennington, 1920: 20 [Bs. As., Mnes.]
Euryophthalmus (sic) *humilis*: Bosq, 1937: 120 [Bs. As., Cs., Mnes.: Eldorado. S.E.] [Host plant: *Ipomoea batatas* (L.)]
Euryophthalmus humilis: Bosq, 1940: 406 [Mnes.] [Host plant: *Senecio* sp.]
Largus humilis: Quintanilla *et al.*, 1981: 155 [Mnes.: Belgrano; Montecarlo] [Host plants: "citros", "yuá"]
Largus humilis: Di Iorio, 2004a: 248 [Mnes., Tuc.] [Host plants: *Citrus* sp., *Flaveria bidentis* (L.) O. Kuntze, *Ipomoea batatas* (L.) Lam., *Senecio* sp., *Solanum paniculatum* L.]

Known distribution: Argentina, Brazil, and Paraguay (Hussey, 1929).

Largus nigrinervis Schmidt, 1931

(Fig. 2)

Largus nigrinervis Schmidt, 1931: 18-19 [Sal.]

Known distribution: Argentina (Schmidt, 1931).

Largus priscillae Hussey, 1927

(Fig. 2)

Largus humilis: Torre Bueno & Thomas, 1915: 159 [S.E.]

Euryophthalmus priscillae Hussey, 1927: 227 [S.E.: Río Salado]

Euryophthalmus priscillae: Hussey, 1929: 18 [S.E.]

Known distribution: Argentina (Hussey, 1929).

Material examined: **Chaco**: 1 female, Resistencia, [-27.4500, -58.9833], 02/XII/1939, Birabén & Bezzi cols.; 1 female, same locality, 11/III/1939, Denier coll.; **Formosa**: 1 female, Isla de Oro, [-25.8167, -58.0667], 18/VII/1938, Denier col.; **Salta**: 1 female, Salta; **Santiago del Estero**: 2 females, Rio Salado, [-27.3826, -63.5165], Wagner col.; **Tucumán**: 1 male, Tucumán, XI-1891, C. Bruch col.

Largus rufipennis Laporte, 1833

(Fig. 3)

Largus rufipennis: Berg, 1878: 264 [provinces of west, north and east from Argentina, Bs.As.]

Largus rufipennis: Lethierry & Severin, 1894, 2: 239 [Bs. As.]

Largus rufipennis: Torre Bueno & Thomas, 1915: 159 [S.E.]

Euryophthalmus rufipennis: Hussey, 1929: 18 [Argentina]

Euryophthalmus rufipennis: Pennington, 1920: 20 [Litoral, centre, Andean, north]

Largus rufipennis: Schmidh, 1931: 21 [Bs. As., Mza., Sal.]

Euryophthalmus (sic) *rufipennis*: Bosq, 1937: 120 [Cba., Cs., L.R., Mnes., R.N., Sal.] [Host plants: *Nicotiana tabacum* L.]

Euryophthalmus rufipennis: Hayward, 1942: 35 [Tuc.] [Host plants: Solanaceae, "potato", "tobacco"]

- Euryophthalmus rufipennis*: Hayward, 1960: 33 [Tuc.] [Host plants: Solanaceae, "potato", "tobacco"]
- Largus rufipennis*: Quintanilla *et al.*, 1967-1968: 34 [E.R.: La Paz; Paraná; Tala] [Host plants: "espinillo", "sunflower", "sweet orange", "carrot"]
- Euryophthalmus rufipennis*: Viana & Williner, 1972: 27 [Cba.: Carlos Paz; San Clemente; Yacanto; Villa Gral. Belgrano]
- Largus rufipennis*: Quintanilla *et al.*, 1975-1976: 127 [Cs.: Concepción; Gral. Alvear; Paso de Los Libres; San Cosme; San Luis del Palmar; San Martín; Santo Tomé] [Host plants: "chard", "flower of souls", "tomato", Poaceae and wild Solanaceae]
- Largus rufipennis*: Viana & Williner, 1978: 76 [Cba.: Carlos Paz; Villa Gral. Belgrano; Yacanto]
- Largus rufipennis*: Quintanilla *et al.*, 1981: 155 [Mnes.: Apóstoles; Cainguás; Posadas; Oberá; San Ignacio] [Host plants: "chard", "coffeeweed", "succory", "blue sailors", "radicchio", "garlic", "lettuce", "cassava", "common bean", "flower of souls", "yerba mate"]
- Largus rufipennis*: Mola & Papeschi, 1993: 33 [Cs.: Santo Tomé]
- Largus rufipennis*: Bressa *et al.*, 1998: 253-254 [Bs. As.: Tornquist; Capital Federal, Costanera Norte. Mnes.: Itaembé]
- Largus rufipennis*: Coscarón *et al.*, 2004: 123 [Cs.: Galarza]
- Largus rufipennis*: Di Iorio, 2004a, 247: [Cs., E.R., Mnes.] [Host plants: *Acacia cavens* (Mol.) Mol., *Allium sativum* L., *Beta vulgaris* L. var. *cycla*, *Cichorium intybus* L., *Citrus sinensis* (L.) Osbeck, *Daucus carota* L., *Helianthus annuus* L., *Ilex paraguayensis* St. Hil, *Lactuca sativa* L., *Lantana megapotamica* (Spreng.) Tronc., *Lycopersicon esculentum* Miller, *Manihot esculenta* Crantz, *Muehlenbeckia sagittifolia* (Ort.) Meisner, *Nicotiana tabacum* L., *Phaseolus vulgaris* L., *Senecio brasiliensis* (Spreng.) Less., *Senecio grisebachii* Bak., *Solanum tuberosum* L., *Sphaeralcea bonariensis* (Cav.) Griseb.]
- Largus rufipennis*: Bressa *et al.*, 2005: 308 [Bs. As.: Parque Provincial Tornquist]
- Largus rufipennis*: Marrero *et al.*, 2008: 31 [Bs. As.: Cerro Cura Malal]
- Largus rufipennis*: Nanni *et al.*, 2011: 35 [Bs. As.: Campana, INTA Delta del Paraná]
- Largus rufipennis*: Carpintero & De Biase, 2011: 42 [Bs. As.: Isla Martín García]
- Known distribution: Argentina, Bolivia, Brazil, Paraguay, Puerto Rico? (doubtful record), and Uruguay (Hussey, 1929; Schmidt, 1931).
- Material studied: **Buenos Aires**: 2 males, 1 female, Sierra Cura Malal, [-37.7333, -62.2666], 05/IV/1926; 9 males, 12 females, Monte Hermoso, [-38.9833, -61.3000], 28/II/1957, Torres & Ronderos cols.; 1 female, Jose C. Paz, [-34.5000, -58.7500], Uragli col.; 1 female, Bahía Blanca, [-38.7166, -62.2833]; **Catamarca**: 2 males, 1 female, Andalgalá, [-27.6000, -66.3166], 03/III/1939, Birabén & Scott cols.; **Chaco**: 2 males, 1 female, Resistencia, [-27.4500, -58.9833], 01/XI/1935, Denier col.; 8 males, 5 females, Col. Basail, [-27.8666, -59.3000], 28/I/1939, Birabén & Bezzi cols.; 1 male, 3 females, Presidente de La Plaza, [-27.0166, -59.8500], 07/I/1939, Birabén & Bezzi cols.; **Córdoba**: 1 male, 1 female, Yacanto, [-32.0500, -65.0500], 01/III/1958, Bosq col.; 1 male, 4 females, Cabana, [-31.2166, -64.3666], 12/III/1937, Birabén col.; 4 males, 8 females, Villa Dolores, [-31.9333, -65.2000], 16/II/1940, Birabén col.; 2 males, 1 female, Tanti, [-31.3333, -64.6000]; **Corrientes**: 1 female, Goya, [-29.1333, -59.2666], Bosq coll.; 1 male, Santo Tomé, [-28.5500, -56.0500], 01/X/1925, Bosq coll.; **Entre Ríos**: 1 female, Palmar, [-31.9833, -58.3000], 02/XII/1941, Birabén & Bezzi cols.; 1 male, same data, Birabén col.; **Formosa**: 1 female, Isla de Oro, [-25.8167, -58.0667], 09/XII/1936, Denier col.; 1 male, Garcete Cué, Puerto Pilcomayo, [-24.8333, -59.2666], 01/XII/1940, Denier col.; **Jujuy**: 1 male, 1 female, Yala, [-24.1166, -65.3833], 12/III/1939, Birabén & Scott cols.; 5 males, 5 females, Jujuy, 30/VI/1906, Bruch col.; 1 male, San Lorenzo, [-37.0666, -64.2666], 04/XI/1912; **La Pampa**: 1 female, Toay, [-36.6666, -64.3500], 01/XII/1959; **La Rioja**: 5 males, 5 females, Famatina, [-28.9166, -67.5166], 22/II/1959, Torres &

Gardella cols.; **Misiones:** 1 female, INTA San Antonio, [-26.0474, -53.7685], 17/V/2009, L. Negrete col.; 1 male, 3 females, Leandro N. Alem, [-27.6000, -55.3166], 01/VII/1937, Denier col.; 1 male, 2 females, Loreto, [-27.3166, -55.5333], 01/V/1936, Bosq col.; 2 males, San Ignacio, [-27.2666, -55.5333], 30/XI/1929; 4 males, 2 females, same locality, 15/XI/1939; 1 female, same locality, 11/XII/1929; 2 males, same locality, 07/I/1929; 1 male, 2 females, 25/X/1929; 3 females, same locality, 08/XII/1941, Birabén & Bezzi cols.; 1 male, Apóstoles, [-27.9166, -55.7666], 18/XI/1944, Birabén col.; 1 male, 3 females, Iguazú, [-25.5666, -54.5666], 01/XI/1944, Birabén col.; **Río Negro:** 1 male, 1 female, Rio Colorado, [-39.0166, -64.0833], 01/XII/1930, Bosq col.; **Salta:** 3 males, Salta, Bosq coll.; 1 male, Rosario de la Frontera, [-25.8000, -64.9666], 01/I/1944, Martínez & Bezzi col.; 1 male, C. Quijano, [-24.9166, -65.6500], 14/I/1936, E. Langmann col.; 5 males, 2 females, San Lorenzo, [-26.1000, -64.6833], 24/XII/1939, Denier col.; **Santa Fe:** 2 females, Candiotti, [-31.4000, -60.7500], 21/XI/1939, Birabén & Bezzi cols.; 1 male 1 female, Vera, [-29.4666, -60.2166], 24/XI/1939, Birabén & Bezzi cols.; **Tucumán:** 1 male, 1 female, Yerba Buena, [-26.8166, -65.3166], 20/VI/1945, Maldonado col.; 1 male, Tucumán, Bruch col.; 1 female, La Cocha, [-27.7833, -65.5666], 20/III/1939, Birabén & Scott cols.; 2 males, 1 female, Las Criollas, [-26.4166, -65.5333], 03/VI/1913; 2 males, 3 females, Tucumán; 1 male, Gonzalo, [-26.3833, -65.5166], 31/V/1913.

***Largus trochanterus* Signoret, 1862**

(Fig. 2)

Largus trochanterus: Dellapé *et al.*, 2010: 60-61 [Ju. Mnes.: INTA San Antonio; Loreto. Sal.: Orán, Aguas Blancas]

Known distribution: Argentina, Bolivia, Brazil, Guyana, Peru, Suriname, and West Indies (Distant, 1901; Hussey, 1929; Schmidt, 1931; Doesburg, 1966; Dellapé *et al.*, 2010).

Material examined: **Misiones:** 1 male, INTA San Antonio, [-26.0474, -53.7685], 17/

V/2009, L. Negrete col.

***Acinocoris* Hahn, 1834**

Type species: *Acinocoris callidus* Hahn, 1834. By monotypy.

***Acinocoris lunaris* (Gmelin, 1790)**

(Fig. 4)

Largus lunatus: Berg, 1978: 262 [Mnes.]

Euryophthalmus lunaris: Pennington, 1920: 20 [Mnes.]

Acinocoris lunaris: Hussey, 1929: 12 [Argentina]

Acinocoris lunaris: Quintanilla *et al.*, 1975-1976: 127 [Cs.: Esquina; Goya] [Host plants: "cotton", "citros", "jacaranda", "lettuce"]

Acinocoris lunaris: Di Iorio, 2004a: 275 [Cs.] [Host plants: *Citrus* sp., *Gossypium hirsutum* L., *Jacaranda mimosifolia* D. Don and *Lactuca sativa* L.]

Known distribution: Argentina, Antilles, Brazil, French Guiana, Mexico, Peru, Suriname, and USA (California) (Hussey, 1929; Stål, 1870).

***Acinocoris podalicus* Brailovsky, 1989**

(Fig. 4)

Acinocoris podalicus Brailovsky, 1989: 78 [Fo.: Formosa]

Known distribution: Argentina (Brailovsky, 1989).

***Rosaphe* Kirkaldy & Edwards, 1902**

Type species: *Astemma cornuta* Lepeletier & Serville, 1825. By monotypy.

***Rosaphe sanmartini* (Coscarón & Dellapé, 2006)**

(Fig. 4)

Astemma sanmartini Coscarón & Dellapé, 2006: 99 [Cs.: Colonia C. Pellegrini]

Known distribution: Argentina (Coscarón & Dellapé, 2006).

***Theraneis* Spinola, 1837**

Type species: *Theraneis vittata* Spinola, 1837. By monotypy.

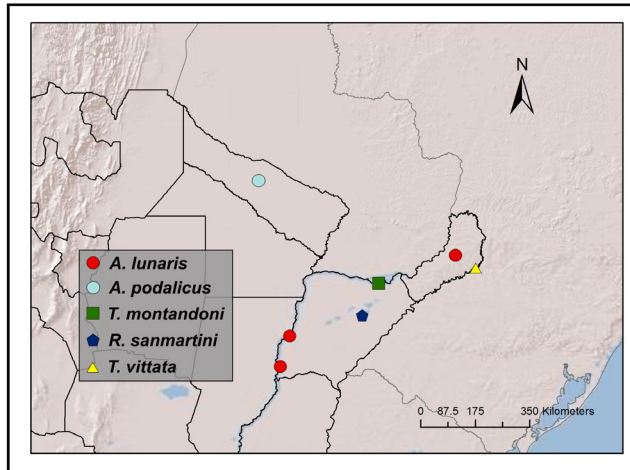


Fig. 4. Distribution in Argentina of *Acinocoris lunaris*, *A. podalicus*, *Thaumastaneis montandoni*, *Rhosaphe sanmartini* and *Theraneis vittata*.

***Theraneis vittata* Spinola, 1837**

(Fig. 4)

Theraneis vittata Spinola 1837: Dellapé & Melo, 2012: 237- 238 [Mnes.: Moconá]

Known distribution: Argentina and Brazil (Hussey, 1929; Dellapé & Melo, 2012).

Tribe Araphini

***Thaumastaneis* Kirkaldy & Edwards, 1902**

Type species: *Thaumastaneis montandoni* Kirkaldy & Edwards, 1902. By monotypy.

***Thaumastaneis montandoni* Kirkaldy & Edwards, 1902**

(Fig. 4)

Thaumastaneis montandoni: Carpintero *et al.*, 2006: 14 [Cs.: Ituzaingó, Reserva Santa María]

Thaumastaneis montandoni: Dellapé & Melo, 2007: 24 [Cs.: Ituzaingó]

Known distribution: Argentina and Brazil (Hussey, 1929; Carpintero *et al.*, 2006).

Family Pyrrhocoridae

***Dysdercus* Guérin-Méneville, 1831**

Type species: *Dysdercus peruvianus* Guérin-Méneville, 1831. By monotypy.

***Dysdercus albofasciatus* Berg, 1878**

(Fig. 5)

Dysdercus ruficollis Berg, 1878: 266 [Mnes.: Corpus]

Dysdercus albofasciatus: Pennington, 1920: 20 [Norte]

Dysdercus (Dysdercus) albofasciatus: Hussey, 1929: 84 [Mnes.]

Dysdercus albofasciatus: Bosq, 1937: 119 [Bs. As.: Tigre; Pereyra. Cha. Cs.: Paraná islands, Mnes.] [Host plants: *Gossypium* ("cotton"), *Pavonia*]

Dysdercus albofasciatus: Costa Lima *et al.*, 1962: 29-30 [Mnes.]

Dysdercus albofasciatus: Quintanilla *et al.*, 1967-1968: 34 [E.R.: Concordia] [Host plants: "sweet orange"]

Dysdercus albofasciatus: Doesburg, 1968: 151-155 [Bs. As.: Anchorena; Isla Martín García; Punta Lara; San Isidro; Olivos; Ituzaingó; Tigre. Cha.: Fontana. Cs.: San Carlos; Santo Tomé. E.R.: Concordia. Mnes.: Loreto; Puerto Bemberg; Alto Paraná, Puerto Aguirre; Concepción, Santa María]

Dysdercus albofasciatus: Quintanilla *et al.*, 1981: 155 [Mnes.: San Ignacio] [Host plants: wild plants near "cassava"]

Dysdercus albofasciatus: Stadler *et al.*, 1987: 145-146 [Bs. As.: Baradero; Magdalena; Ituzaingó, Castelar; La Plata, Punta Lara; San Isidro, Olivos; Tigre; Isla Martín García. Cs.: Concepción; Santo Tomé; Loreto. E.R.:

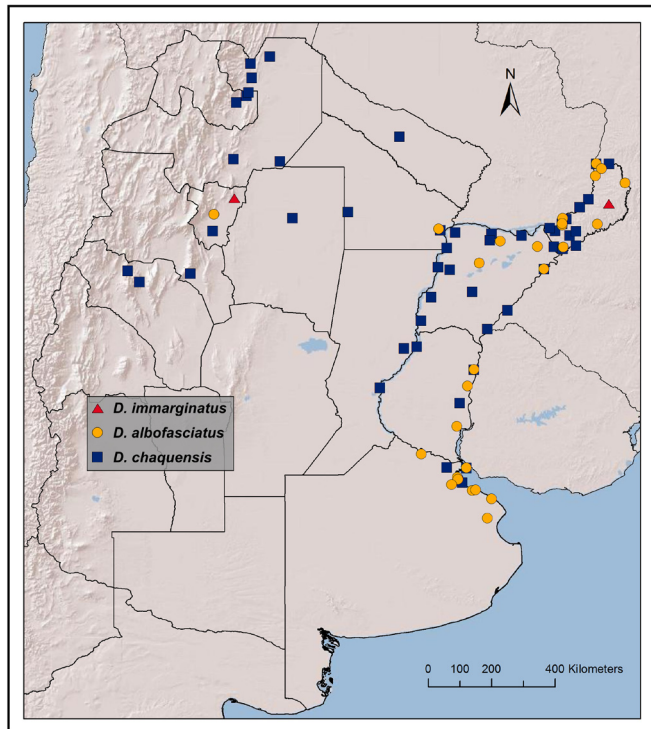


Fig. 5. Distribution in Argentina of *Dysdercus immarginatus*, *D. albofasciatus* and *D. chaquensis*.

Palmar; Concordia. **Mnes.:** Puerto Iguazú; San Carlos. **Tuc.:** Santa María] [Host plants: *Gossypium* sp., *Pavonia malvacea*, *Sida* sp., *Celtis* sp., *Ripalis* sp., *Phytolacca dioica*]

Dysdercus albofasciatus: Bressa *et al.*, 1999: 504 [Bs. As.: Isla Martín García. E.R.: Parque Nacional El Palmar; Gualeguaychú. **Mnes.:** Parque Nacional Iguazú]

Dysdercus albofasciatus: Di Iorio, 2004b: 275 [Bs. As., Cha., E.R., Mnes.] [Host plants: *Citrus cinensis* (L.) Osbeck, *Gossypium hirsutum* L., *Lygustrum cinensis* Lour., *Pavonia malvacea* (Vell.) Krapov. Et Cristobal, *Tilia* sp.]

Dysdercus albofasciatus: Carpintero & De Biase, 2011: 41 [Bs. As.: Isla Martín García]

Dysdercus albofasciatus: Carpintero, 2009: 301, 303 [Bs. As.: Reserva Provincial y Reserva de Biósfera Internacional Parque Costero del Sur, former camping ACA and surroundings]

Known distribution: Argentina, Brazil, Paraguay, and Uruguay (Hussey, 1929; Doesburg, 1968).

Material examined: **Misiones:** 6 males, 7 females, San Antonio, [-26.1166, -53.7500], 23/25-II-2009, L. Negrete col.

Dysdercus chaquensis Freiberg, 1948 (Fig. 5)

Dysdercus? *pallidus*: Bosq 1940: 405 [Cha., S.E.] [Host plants: "cotton", "malvisco" (*Sphaeralcea*)]

Dysdercus sp.: Freibert (Freiberg), 1943: 3-13 [Cha., Cs., Fo., Sal., S.F., S.E.] [Host plant: "cotton"]

Dysdercus pallidus: Freiberg, 1945: 362-372 [Cha., Cs., Fo., Sal., S.F., S.E.] [Host plant: "cotton"]

Dysdercus chaquensis Freiberg, 1948: 4-5 [Cha., Cs., Fo., Sal.] [Host plant: "cotton"]

Dysdercus chaquensis: Ruffinelli & Pirán, 1959: 32 [Argentina] [Host plant: "cotton"]

Dysdercus chaquensis: Costa Lima *et al.*, 1962: 31-32 [Cha.]

Dysdercus chaquensis: Quintanilla *et al.*, 1967-1968: 34 [E.R.: Concordia; La Paz] [Host plants: "cotton", "jacaranda", "maritime pine"]

Dysdercus chaquensis: Doesburg, 1968: 134-137 [Bs. As.: Puerto Madero. Cm.: Concepción. Cha.: Resistencia. Cs.: Santo Tomé; San Roque. E.R.: Pronunciamiento. Ju.: Ledesma; Juto. L.R.: Nido de Famatina; Trapiche; Durazno. Mnes.: Santo Pipó. Sal.: Urundel; Aguas Blancas; Orán; Esteco; Tartagal. S.F.: Garay; Colonia Macías. S.E.: Eldorado; Chaco de S.E.. Tuc.] [Host plant: "cotton", *Sphaeralcea* sp.]

Dysdercus chaquensis: Rizzo, 1976: 42-45 [Argentina] [Host plants: "cotton", Malvaceae, "Palo borracho"]

Dysdercus chaquensis: Quintanilla *et al.*, 1975-1976: 127 [Cs.: Esquina; Bella Vista; Berón de Astrada; Empedrado; Ituzaingó; Mercedes; Monte Caseros; Paso de Los Libres; San Luis del Palmar; San Martín; Santo Tomé; Sauce] [Host plants: "cotton", "lettuce", "silk floss tree", "potato", "pimiento", "bean", "tobacco", stubble of "corn" and "soya"]

Dysdercus chaquensis: Quintanilla *et al.*, 1981: 155 [Mnes.: San Ignacio; Alem; Apóstoles; Cainguás; Candelaria; Posadas; Concepción de La Sierra; Iguazú; Montecarlo; Oberá; San Javier; San Martín] [Host plants: "cotton", "sweet potato", "citron", "escoba dura", "grape fruit", "soya", "tomato", "yerba mate", "yuá"]

Dysdercus chaquensis: Mola & Papeschi, 1997: 20 [Sal.: Tolloche]

Dysdercus chaquensis: Di Iorio, 2004b: 276 [Cha., Cs., E.R., Mnes., S.E., Tuc.] [Host plants: *Citrus medica* (L.), *Citrus paradisi* Macf., *Gossypium hirsutum* L., *Lactuca sativa* L., *Amaranthus* sp., *Capsicum annum* L., *Chorisia speciosa* St. Hil., *Glycine max* (L) Merrill, *Ilex paraguayensis* St. Hil., *Ipomoea batatas* (L.) Lam., *Jacaranda acutifolia* H. B. K., *Lycopersicum esculentum* Miller, *Malvastrum coromandellianum* Garcke, *Nicotiana tabacum* L., *Phacelus vulgaris* L., *Physalis angulata*, *Pinus pinaster* Aiton, *Sida rhombifolia* L., *Solanum paniculatum* L., *Solanum tuberosum* L., *Sphaeralcea bonariensis* (Cav.) Griseb, *Zea mays* L.]

Dysdercus chaquensis: Carpintero & De Biase, 2011: 42 [Bs. As.: Isla Martín García]

Known distribution: Argentina, Brazil, Bolivia, Ecuador, Paraguay, and Uruguay

(Doesburg, 1968; Costa Lima *et al.*, 1962).

Material examined: **Chaco**: 1 female, 35 km Tres Estacas, [-26.9333, -61.6000], 27/XI/2007, Marti & Pelliza cols.; 1 male, same data, 25/XI/2007; 1 female, same data, 26/XI/2007.

Remarks: The record from *Jacaranda acutifolia* H. B. K. is a misidentification of the host since the tree is not mentioned to the Argentinean flora.

Dysdercus honestus Blöte, 1931

(Fig. 6)

Dysdercus honestus: Costa Lima *et al.*, 1962: 38-39 [Cha.: Resistencia. Cs.]

Known distribution: Argentina, Bolivia, Brazil, Guyane, Colombia, Paraguay, Peru, Suriname, and Venezuela (Costa Lima *et al.*, 1962; Doesburg, 1968).

Dysdercus imitator Blöte, 1931

(Fig. 6)

Dysdercus imitator: Bressa *et al.*, 2003: 136 [Mnes.: Parque Nacional Iguazú]

Dysdercus imitator: Carpintero *et al.*, 2006: 15 [Cs.: Ituzaingó, Reserva Santa María]

Known distribution: Argentina, Bolivia, Brazil, Colombia, Ecuador, Peru, and Venezuela (Doesburg, 1968; Bressa *et al.*, 2003; Adis & Froeschner, 1982)

Dysdercus immarginatus Blöte, 1931

(Fig. 5)

Dysdercus fernaldi: Pearson, 1932: 123-124 [Tuc.]

Dysdercus immarginatus: Bosq, 1940: 405 [Tuc.] [Host plant: *Chorisia* sp.]

Dysdercus immarginatus: Hayward, 1942: 34 [Tuc.] [Host plant: *Chorisia insignis* Kth.]

Dysdercus immarginatus: Hayward, 1960: 33 [Tuc.] [Host plants *Chorisia insignis* Kth.]

Dysdercus immarginatus: Doesburg, 1968: 157-160 [Mis. Alto Paraná, between Corrientes and Posadas] [Host plant: *Chorisia insignis* Kth.]

Dysdercus immarginatus: Di Iorio, 2004b: 277 [Tuc.] [Host plant: *Chorisia* sp.]

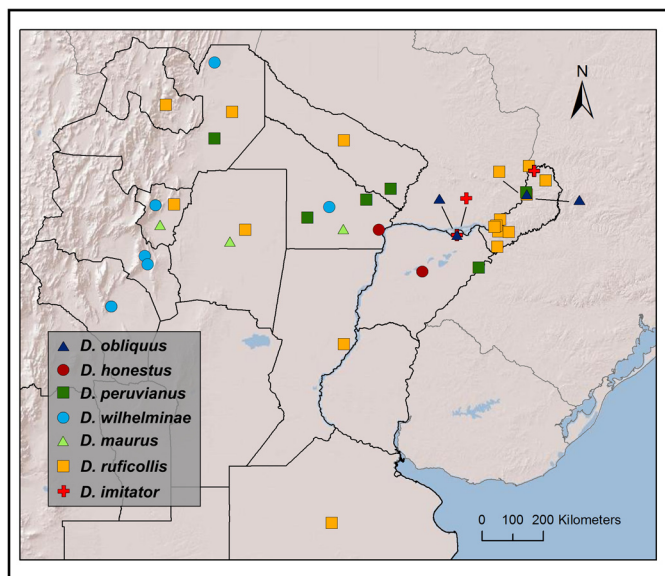


Fig. 6. Distribution in Argentina of *Dysdercus obliquus*, *D. honestus*, *D. peruvianus*, *D. wilhelminae*, *D. maurus*, *D. ruficollis* and *D. imitator*.

Known distribution: Argentina, Brazil, Colombia, Paraguay, Peru, Trinidad, and Venezuela (Pearson, 1932; Doesburg, 1968).

***Dysdercus maurus* Distant, 1901**

(Fig. 6)

Dysdercus maurus: Pearson, 1932: 117 [Tuc.]

Dysdercus? pallidus: Bosq, 1940: 405 [Cha., S.E.]

Dysdercus? pallidus: Hayward, 1942: 35 [Tuc.] [Host plants: "cotton", *Sphaeralcea* sp. ("Malvisco")]

Dysdercus? pallidus: Hayward, 1960: 33 [Tuc.] [Host plants: "cotton", *Sphaeralcea* sp. ("Malvisco")]

Dysdercus maurus: Costa Lima *et al.*, 1962: 41 [Argentina]

Known distribution: Argentina, Brazil, Colombia, Curaçao, Guyane, Suriname, Trinidad, and Venezuela (Hussey, 1929; Pearson, 1932; Doesburg, 1968).

Note: Bosq (1940) mentioned *D. pallidus* from Argentina (Chaco and Santiago del Estero provinces) doubting its specific identity, and Hayward (1942, 1960) repeated that information, recording the species

from Tucumán province. Doesburg (1968) considered *D. pallidus* as a synonym of *D. maurus*, and included Hayward (1942) in the synonymic list, not including the record from Tucumán province for this species, probably due to the uncertainty of Hayward.

***Dysdercus obliquus* (Herrich-Schaffer, 1843)**

(Fig. 6)

Dysdercus obliquus: Quintanilla *et al.*, 1975-1976: 127 [Cs.: Ituzaingó] [Host plants: stubble of "corn" and "soya"]

Dysdercus obliquus: Quintanilla *et al.*, 1981: 155 [Mnes.: Eldorado] [Host plants: weeds under "pine" and "araucaria"]

Dysdercus obliquus: Di Iorio, 2004b: 277 [Cs.] [Host plants: *Glycine max* (L) Merrill, *Zea mays* L.]

Known distribution: Argentina, Colombia, Costa Rica, Ecuador, El Salvador, Guatemala, Honduras, Mexico, Nicaragua, Panama, USA (Arizona, California), and Venezuela (Hussey, 1929; Costa Lima *et al.*, 1962; Doesburg, 1968; Quintanilla *et al.*, 1975-1976).

***Dysdercus peruvianus* Guérin-Méneville, 1831**

(Fig. 6)

Dysdercus mendesi: Bosq, 1940: 405 [Mnes., Sal.] [Host plants: "cotton"]

Dysdercus sp.: Freiberg, 1945: 373-380 [Cha.: El Zapallar. Fo.: El Bolsón, Laishi] [Host plant: "cotton"]

Dysdercus mendesi: Freiberg, 1948: 3-4 (specific identification from 1945 paper).

Dysdercus mendesi: Berry, 1951: 329-330 [Cha.: Zapallar, Las Breñas. Fo.]

Dysdercus mendesi: Costa Lima *et al.*, 1962: 42 [Fo.]

Dysdercus peruvianus: Doesburg, 1968: 144-150 [Cs.: Santo Tomé. Mnes.: Puerto Victoria] [Host plant: "cotton"]

Dysdercus peruvianus: Di Iorio, 2004b: 277 [Mnes., Sal.] [Host plant: *Gossypium hirsutum* L.]

Known distribution: Argentina, Bolivia, Brazil, Colombia, Ecuador, Hawaii? (doubtful record), Paraguay, Peru, USA (California), and Venezuela (Hussey, 1929; Doesburg, 1968).

Dysdercus ruficollis (Linné, 1764)

(Fig. 6)

Dysdercus ruficollis: Berg, 1878: 265 [Bs. As., Cba., Cs., Mnes., Tuc.]

Dysdercus ruficollis: Lethierry & Severin, 1894: 254 [Bs. As., Tuc.]

Dysdercus ruficollis: Pennington, 1921: 20 [Litoral, north, centre, Andean]

Dysdercus (*Dysdercus*) *ruficollis*: Hussey, 1929: 101 [Argentina]

Dysdercus ruficollis: Bosq, 1937: 119 [Argentina north of Bs. As.] [Host plants: "cotton", wild Malvaceae]

Dysdercus ruficollis: Denier, 1939: 556 [Cha., Fo., Ju., Mnes., Sal.] [Host plants: "cotton", *Chorisia* sp.]

Dysdercus ruficollis: Bosq, 1940: 406 [Mnes.] [Host plants: cotton, *Ipomoea* sp.]

Dysdercus ruficollis: Hayward, 1942: 35 [Tuc.] [Host plants: Malvaceae, "cotton", *Ipomoea* sp.]

Dysdercus ruficollis: Berry, 1951: 329-330 [Cha.: Zapallar; Las Breñas. Fo., S.E., Tuc.]

Dysdercus ruficollis: Ruffinelli & Pirán, 1959: 32 [Argentina] [Host plant: "cotton"]

Dysdercus ruficollis (sic): Hayward, 1960: 33 [Tuc.] [Host plants: Malvaceae, "cotton",

Ipomoea sp.]

Dysdercus ruficollis: Costa Lima *et al.*, 1962: 47-49 [Mnes.: Puerto Iguazú]

Dysdercus ruficollis var.? *albo-membranaceus*: Costa Lima *et al.*, 1962: 50 [Mnes.]

Dysdercus ruficollis: Doesburg, 1968: 137-144 [Cs.: Santo Tomé. Mnes.: Santo Pipó, Campo Grande, Eldorado, Iguazú, Bompland, Loreto, Yermal Viejo, Santa María (Concepción). S.F.: Garay, Colonia Macías, Alto Paraná, Puerto Aguirre] [Host plant: "cotton"]

Dysdercus ruficollis: Adis & Froeschner, 1982: 373 [Argentina]

Dysdercus ruficollis: Coscarón, 1998: 703 [Mnes.: Santa Ana]

Dysdercus ruficollis: Di Iorio, 2004b: 277 [Mnes.] [Host plants: *Gossypium hirsutum* L., *Ipomoea* sp., *Lycopersicum esculentum* Miller, *Hibiscus* sp., *Xanthium* sp.]

Known distribution: Argentina, Bolivia, Brazil, Colombia, Curaçao, Ecuador, El Salvador, Guyane, Mexico, Paraguay, Peru, Suriname, Trinidad, and Venezuela (Hussey, 1929; Costa Lima *et al.*, 1962; Doesburg, 1968).

Material examined: **Misiones**: 5 males, 3 females, Reserva Urugua-í, [-25.9833, -54.0833], II-2009, L. Negrete col.; 1 male, 3 females, same locality, 23/25-II-2009, L. Negrete col.

Dysdercus wilhelminae Doesburg, 1968

(Fig. 6)

Dysdercus wilhelminae Doesburg, 1968: 111 [Cha.: Roque Sáenz Peña. Cm.: El Rodeo; San Fernando del Valle de Catamarca. L.R. Sal.: Tartagal. Tuc.]

Known distribution: Argentina and Bolivia (Doesburg, 1968).

ACKNOWLEDGEMENTS

We want to express our gratitude to Diego Gutiérrez (División Plantas Vasculares, Museo de La Plata) for his assistance with

Table I. Continuation

	<i>L. fasciatus</i> Blanchard	<i>L. humilis</i> (Drury)	<i>L. rufipennis</i> Laporte	<i>A. lunaris</i> (Gmelin)	<i>D. albofasciatus</i> Berg	<i>D. chaquesis</i> Freiberg	<i>D. obliquus</i> (Herrich-Schaffer)	<i>D. maurus</i> Distant	<i>D. peruvianus</i> Guérin-Méneville	<i>D. ruficollis</i> (Linné)
Bignoniaceae <i>Jacaranda acutifolia</i> Humb. & Bonpl. <i>Jacaranda mimosifolia</i> D. Don.				x		x				
Bombacaceae <i>Ceiba speciosa</i> (A. St.-Hil., A. Juss. & Cambess.) Ravenna [sub <i>Chorisia speciosa</i> A. St.-Hil., A. Juss. & Cambess.] <i>Ceiba</i> sp. [sub <i>Chorisia</i> sp.]						x				x
Chenopodiaceae <i>Beta vulgaris</i> L. var. <i>cicla</i> L.			x							
Convolvulaceae <i>Ipomoea batatas</i> (L.) Lam. <i>Ipomoea cairica</i> (L.) Sweet <i>Ipomoea</i> sp.	x x	x				x				x
Cucurbitaceae <i>Cucurbita máxima</i> Duchesne	x									
Euphorbiaceae <i>Manihot esculenta</i> Crantz	x		x							
Fabaceae <i>Acacia caven</i> (Molina) Molina <i>Glycine max</i> (L.) Merrill <i>Medicago sativa</i> L. <i>Phaseolus vulgaris</i> L.			x			x	x			
Malvaceae <i>Gossypium hirsutum</i> L. <i>Hibiscus</i> sp. <i>Malvastrum coromandelianum</i> (L.) Garcke <i>Pavonea sepium</i> A. St.-Hill. [sub <i>Pavonia malvacea</i> (Vell.) Krapov. & Cristóbal]	x			x	x	x		x	x	x
						x				x

Table I. Continuation

	<i>L. fasciatus</i> Blanchard	<i>L. humilis</i> (Drury)	<i>L. rufipennis</i> Laporte	<i>A. lunaris</i> (Gmelin)	<i>D. albofasciatus</i> Berg	<i>D. chaquesis</i> Freiberg	<i>D. obliquus</i> (Herrich-Schaffer)	<i>D. maurus</i> Distant	<i>D. peruvianus</i> Guérin-Ménéville	<i>D. ruficollis</i> (Linné)
<i>Sida rhombifolia</i> L.						x				
<i>Sphaeralcea bonariensis</i> (Cav.) Griceb.			x			x				
<i>Sphaeralcea</i> sp.								x		
<i>Tilia</i> sp.					x					
Olaceae										
<i>Lygstrum sinense</i> Lour.					x					
Polygonaceae										
<i>Muehlenbeckia sagittifolia</i> (Ortega) Meisn.			x							
Rhamnaceae										
<i>Condalia microphylla</i> Cav.		x				x				
Rosaceae										
<i>Prunus persica</i> (L.) Batsch.	x									
Rutaceae										
<i>Citrus medica</i> (L.)						x				
<i>Citrus x paradisi</i> Macfad.						x				
<i>Citrus sinensis</i> (L.) Osbeck			x		x					
<i>Citrus</i> sp.		x		x						
Solanaceae										
<i>Capsicum annum</i> L.						x				
<i>Lycopersicum esculentum</i> Mill.			x			x				x
<i>Nicotiana tabacum</i> L.			x			x				
<i>Physalis angulata</i> L.						x				
<i>Salpichroa organifolia</i> (Lam.) Baill.	x									
<i>Solanum melongena</i> L.	x									
<i>Solanum paniculatum</i> L.		x				x				
<i>Solanum tuberosum</i> L.			x			x				
Verbenaceae										
<i>Lantana megapotamica</i> (Spreng.) Tronc.			x							

Table II. Host plants' classification, status, and scientific and vernacular names.

Family/ species	Status	Habit	Common names
GYMNOSPERMS			
Pinaceae <i>Pinus pinaster</i> Aiton	cultivated	tree	Sp.: Pino marítimo; En.: Maritime pine
ANGIOSPERMS			
Monocots			
Alliaceae <i>Allium sativum</i> L.	cultivated	herb	Sp.: Ajo; En.: Garlic
Poaceae <i>Zea mays</i> L.	cultivated	Herb	Sp.: Maíz; En.: Corn
Dicots			
Amaranthaceae <i>Amaranthus</i> sp.	native or introduced	herbs	
Apiaceae <i>Daucus carota</i> L. <i>Foeniculum vulgare</i> Mill. var. <i>capillaceum</i> (Gilib.) Paoletti	introduced, cultivated introduced	herb herb	Sp.: Zanahoria; En.: Carrot Sp.: Hinojo silvestre; En.: Wild fennel
Aquifoliaceae <i>Ilex paraguariensis</i> A. St.-Hil.	native, cultivated	shrub or tree	Sp.: Yerba mate
Asteraceae <i>Cichorium intybus</i> L. <i>Cynara cardunculus</i> L. <i>Flaveria bidentis</i> (L.) Kuntze <i>Helianthus annuus</i> L. <i>Lactuca sativa</i> L. <i>Senecio brasiliensis</i> (Spreng.) Less. <i>Senecio grisebachii</i> Baker <i>Senecio</i> sp. <i>Xanthium</i> sp.	introduced, cultivated introduced, cultivated native introduced, cultivated introduced, cultivated native native mainly native, some introduced native or introduced	herb herb herb herb herb herb herbs, subshrubs or shrubs herbs	Sp.: achicoria, radicheta; En.: coffeeweed, succory, blue sailors Sp.: Cardo; En.: Cardoon Sp.: Girasol; En.: Sunflower Sp.: Lechuga; En.: Lettuce En.: Flower of souls
Bignoniaceae <i>Jacaranda acutifolia</i> Humb. & Bonpl. <i>Jacaranda mimosifolia</i> D. Don	? not in Argentina	tree	Jacaranda Jacaranda

Table II. Continuation.

Family/ species	Status	Habit	Common names
Bombacaceae			
<i>Ceiba speciosa</i> (A. St.-Hil., A. Juss. & Cambess.) Ravenna [sub <i>Chorisia speciosa</i> A. St.-Hil., A. Juss. & Cambess.]	native, cultivated	tree	Sp.: Palo Borracho; En.: Silk floss tree
<i>Ceiba</i> sp. [sub <i>Chorisia</i> sp.]	native	tree	
Chenopodiaceae			
<i>Beta vulgaris</i> L. var. <i>cicla</i> L.	cultivated	herb	Sp.: Acelga común; En.: Chard
Convolvulaceae			
<i>Ipomoea batatas</i> (L.) Lam.	cultivated	herb	Sp.: Batata, boniato, camote, papa dulce; En.: Sweet potato
<i>Ipomoea cairica</i> (L.) Sweet	native	climber	
<i>Ipomoea</i> sp.	mainly native, few introduced	herbs or climbers, sometimos subshrub	Sp.: Campanillas; En.: Morning glory
Cucurbitaceae			
<i>Cucurbita máxima</i> Duchesne	native, cultivated	herb or climber	Sp.: Zapallo, zapallo criollo; En.: Pumpkin
Euphorbiaceae			
<i>Manihot esculenta</i> Crantz	introduced, cultivated	subshrub or shrub	Sp.: Mandioca; En.: Cassava
Fabaceae			
<i>Acacia caven</i> (Molina) Molina	native	shrub or tree	Espinillo
<i>Glycine max</i> (L.) Merrill	cultivated	herb	Sp.: Soja, soya, poroto soya, frijol soja; En.: Soya
<i>Medicago sativa</i> L.	introduced, cultivated	herb or subshrub	Alfalfa
<i>Phaseolus vulgaris</i> L.	native, cultivated	herb or climber	Sp.: Poroto, frijol, habichuela, judía; En.: Common bean
Malvaceae			
<i>Gossypium hirsutum</i> L.	cultivated	subshrub	Sp.: Algodonero común, algodón; En.: Cotton
<i>Hibiscus</i> sp.	mainly native, some introduced	herbs, subshrubs or shrubs	
<i>Malvastrum coromandelianum</i> (L.) Garcke	native	subshrub	Escoba dura

Table II. Continuation.

Family/ species	Status	Habit	Common names
<i>Pavonia sepium</i> A. St.-Hill. [sub <i>Pavonia malvacea</i> (Vell.) Krapov. & Cristóbal]	native	shrub	
<i>Sida rhombifolia</i> L.	native	herb or subshrub	
<i>Sphaeralcea bonariensis</i> (Cav.) Griseb.	native	subshrub	
<i>Sphaeralcea</i> sp.	native	herbs or subshrubs	
<i>Tilia</i> sp.	cultivated	trees	Sp.: Tilo
Oleaceae			
<i>Ligustrum sinense</i> Lour.	introduced, cultivated	shrub or tree	
Polygonacea			
<i>Muehlenbeckia sagittifolia</i> (Ortega) Meisn.	native	shrub	
Rhamnaceae			
<i>Condalia microphylla</i> Cav.	native	shrub	Yuá, Piquillin
Rosaceae			
<i>Prunus persica</i> (L.) Batsch.	introduced, cultivated	tree	Sp.: Duraznero; En.: Peach
Rutaceae			
<i>Citrus medica</i> L.	cultivated	shrub or tree	Sp.: Sidra; En.: Citron
<i>Citrus x paradisi</i> Macfad.	cultivated	tree	Sp.: Pomelo; En.: Grape fruit
<i>Citrus sinensis</i> (L.) Osbeck	cultivated	tree	Sp.: Naranja dulce; En.: Sweet orange
<i>Citrus</i> sp.	introduced, cultivated	tree	
Solanaceae			
<i>Capsicum annuum</i> L.	cultivated	herb or subshrub	Sp.: Ají, Pimiento
<i>Lycopersicon esculentum</i> Mill.	cultivated	herb	Sp.: Tomate; En.: Tomato
<i>Nicotiana tabacum</i> L.	introduced, cultivated	herb	Sp.: Tabaco; En.: Tobacco
<i>Physalis angulata</i> L.	native	herb	
<i>Salpichroa origanifolia</i> (Lam.) Baill.	native	herb or subshrub	
<i>Solanum melongena</i> L.	cultivated	subshrub	Sp.: Berenjena; En.: Eggplant
<i>Solanum paniculatum</i> L.	native	shrub or tree	
<i>Solanum tuberosum</i> L.	native, cultivated	herb	Sp.: Papa; En.: Potato
Verbenaceae			
<i>Lantana megapotamica</i> (Spreng.) Tronc.	native	shrub	

the host plants' classification, status and scientific and vernacular names. This study was supported by the Consejo Nacional de Investigaciones Científicas y Técnicas (CONICET), Argentina, and the following grant: PIP 0255 (2010-2012).

LITERATURE CITED

- ADIS, J. & R. C. FROESCHNER. 1982. Notes on distribution of some Latin American cotton-stainers (*Dysdercus*: Pyrrhocoridae: Hemiptera) and remarks on the biology of *Dysdercus urbahnii* Schmidt. *Proceedings of the Biological Society of Washington* 95: 371-376.
- BERG, C. 1878. Hemiptera Argentina. *Anales de la Sociedad Científica Argentina* 6(6): 261-284.
- BERG, C. 1884. Hemiptera Argentina. Adenda et emendanda. *Anales de la Sociedad Científica Argentina* 17: 97-118
- BERRY, P. A. 1951. Biology and habitats of cotton stainers (Hemiptera: *Dysdercus* spp.) their natural enemies in South America, and two parasitic flies imported into Puerto Rico. *Revista Entomológica* 22: 329-342.
- BLANCHARD, E. 1843. Insectes de l'Amérique méridionale, recueilles par Alcide d'Orbigny pendant les années 1826-1833. In: *Voyage dans l'Amérique méridionale*, Tome sixième, 2^e partie: Insectes. A. D'Orbigny, Bertrand, Paris, pp. 1-222.
- BLÖTE, H. C. 1931. Catalogue of the Pyrrhocoridae in's Rijks Museum van Natuurlijke Historie. *Zoologische Mededeelingen* (Leiden) 14: 97-136.
- BOSQ, J. M. 1937. Lista preliminar de los Hemipteros (Heteropteros); especialmente relacionados con la agricultura nacional. *Revista de la Sociedad Entomológica Argentina* 9: 111-133.
- BOSQ, J. M. 1940. Lista preliminar de los hemipteros (Heterópteros), especialmente relacionados con la agricultura nacional (continuación). *Revista de la Sociedad Entomológica Argentina* 10: 399-417.
- BRAILOVSKY, H. 1989. Cuatro especies nuevas sudamericanas de la familia Largidae (Hemiptera: Heteroptera). *Anales del Instituto de Biología, Serie zoológica* 60: 77-90.
- BRESSA, M. J., A. G. PAPESCHI, L. M. MOLA & M. L. LARRAMENDY. 1998. Meiotic studies in *Largus rufipennis* (Castelnau) (Largidae, Heteroptera) II Reciprocal translocation heterozygosity. *Heredity* 51: 253-264.
- BRESSA, M. J., A. G. PAPESCHI, L. M. MOLA & M. L. LARRAMENDY. 1999. Meiotic studies in *Dysdercus* Guérin Méneville 1831 (Heteroptera: Pyrrhocoridae). I. Neo-XY in *Dysdercus albofasciatus* Berg 1878, a new sex chromosome determining system in Heteroptera. *Chromosome Research* 7: 503-508.
- BRESSA, M. J., M. L. LARRAMENDY & A. PAPESCHI. 2005. Heterochromatin characterization in five species of Heteroptera. *Genetica* 124: 307-317.
- BRESSA, M. J., A. PAPESCHI, E. FUMAGALLI, P. H. VAN DOESBURG & M. L. LARRAMENDY. 2003. Cytogenetic and nucleolar meiotic cycle analyses in *Dysdercus imitator* Blöte, 1931 (Pyrrhocoridae, Heteroptera) from Argentina. *Folia Biologica (Kraków)* 51: 3-4.
- CARPINTERO, D. L. 2009. Fauna del Parque Costero del Sur. Insecta: Hemiptera: Heteroptera. In: Athor, J. (ed.). Parque Costero del Sur, Magdalena y Punta Indio, Provincia de Bs. As. Naturaleza, Conservación y Patrimonio Cultural. Fundación de Historia Natural Félix de Azara, Bs. As. pp. 295-305.
- CARPINTERO, D. L. & S. DE BIASE. 2011. Los Hemiptera Heteroptera de la Isla Martín García (Bs. As., Argentina). *Historia Natural* 1(2): 27-47.
- CARPINTERO, D. L., P. M. DELLAPÉ & M. C. MELO. 2006. New records of Heteroptera (Hemiptera) from Argentina. *Zootaxa* 1129: 1-22.
- COSCARÓN, M. C. 1998. Descriptions of nymphs III and IV of *Dysdercus ruficollis* (L.) (Heteroptera: Pyrrhocoridae). *Proceedings of the Entomological Society of Washington* 100: 700-703.
- COSCARÓN, M. C., P. M. DELLAPÉ & A. P. MARTÍNEZ. 2004. Description of some immature stages of *Largus rufipennis* Laporte (Heteroptera: Largidae). *Studies on Neotropical Fauna and Environment* 39(2): 123-125.
- COSCARÓN, M. C. & P. M. DELLAPÉ. 2006. A new species of *Astemma* from Argentina (Heteroptera: Largidae: Larginae). *Transactions of the Entomological Society of America* 132: 1+2: 99-102.
- COSTA LIMA, A. da, N. GUITTON & O. V. FERREIRA. 1962. Sobre as espécies americanas do género *Dysdercus* Boisduval (Hemiptera, Pyrrhocoridae, Pyrrhocorinae). *Memórias do Instituto Oswaldo Cruz* 60(1): 21-57.
- DELLAPÉ, P. M. & M. C. MELO. 2007. *Thaumastaneis nigricans*, a new species of a remarkable ant mimetic Larginae (Heteroptera: Largidae) and the discovery of an ant mimetic complex. *Zootaxa* 1475: 21-26.
- DELLAPÉ, P. M. & M. C. MELO. 2012. *Theraneis vittata* Spinola 1837 (Hemiptera: Heteroptera: Largidae): First record from Argentina. *CheckList* 8(2): 237-238.
- DELLAPÉ, P. M. & M. C. MELO. (in press) *Pyrrhocoroidea*. In: Biodiversidad de Artrópodos Argentinos (Vol. 4). L.E. Claps & S. Roig-Juñent (Dirs.). Universidad Nacional de Tucumán.
- DELLAPÉ, P. M., D. L. CARPINTERO & M. C. MELO. 2010. New records of Dipsocoromorpha, Cimicomorpha and Pentatomomorpha (Hemiptera: Heteroptera) from Argentina. *Zootaxa* 2436: 57-64.
- DENIER, P. C. 1939. Lista de los artrópodos dañinos o útiles a los algodonales argentinos. *Physis* 17: 553-567.
- DI IORIO, O. 2004a. Hemiptera: Largidae. In: Cordo, H. A., G. Logarzo, K. Brown & O. Di Iorio (Dirs.). *Catálogo de insectos fitófagos de la Argentina y sus plantas asociadas*. Sociedad Entomológica Argentina Ediciones, Bs. As., Argentina, pp. 247-249.
- DI IORIO, O. 2004b. Hemiptera: Pyrrhocoridae. In: Cordo, H. A., G. Logarzo, K. Brown & O. Di Iorio (Dirs.). *Catálogo de insectos fitófagos de la Argentina y sus plantas asociadas*. Sociedad Entomológica Argentina Ediciones, Bs. As., Argentina, pp. 275-277.
- DISTANT, W. L. 1901. Contributions to the knowledge of the Rhynchota. *Transactions of the Entomological Society of London* 1901: 581-592.
- DOESBURG Jr., P. H. Van. 1966. Heteroptera of Suriname. I. Largidae and Pyrrhocoridae. *Studies of the Fauna of Suriname and other Guyanas* 9: 1-60.
- DOESBURG Jr., P. H. Van. 1968. A revision of the New World species of *Dysdercus* Guérin Méneville (Heteroptera-Pyrrhocoridae). *Zoologische Verhandelingen* 97: 1-215.
- DRURY, D. 1782. *Illustrations of natural history wherein and exhibited upwards of two hundred and forty figures of exotic insects according to their different genera*. Vol. III. B. White, London.

32. FREIBERT, A. 1943 [Freiberg, M. A.] Contribución al conocimiento de la chinche tintórea, *Dysdercus* sp. (Hemiptera- Pyrrhocoridae) con notas sobre su biología. *Ministerio de Agricultura, Junta Nacional Algodonera* 66: 3-13.
33. FREIBERG, M. A. 1945. Investigaciones sobre el género *Dysdercus* Serville (Hemip. Pyrroc.). *Boletín Mensual de la Dirección Algodonera* (5): 362-380.
34. FREIBERG, M. A. 1948. Una nueva especie de *Dysdercus* (Hemip. Pyrroc.) "chinche tintórea" del algodonoero. *Physis* 20: 121-123.
35. GMELIN, J. F. 1790. *Caroli a Linné Systema Naturae (edn 13. 1(4))*. Impensis Georg Emanuel Beer, Leipzig.
36. GUÉRIN-MÉNEVILLE, F. E. 1831. Hémiptères. In: Duperrey L. J. (ed.). *Voyage autour du monde, Zoologies*, Arthus Bertrand, Paris, pp. 1-319. (Text published in 1838).
37. HAHN, C. W. 1831. *Die Wanzenartigen Insecten*. C. H. Zehschen Buchhandlung, Nürnberg, 1: 1-36.
38. HAHN, C. W. 1834. *Die Wanzenartigen Insecten*. C. H. Zehschen Buchhandlung, Nürnberg 2: 33-120.
39. HAYWARD, K. J. 1942. Primera lista de insectos tucumanos perjudiciales. *Estación Experimental Agrícola de Tucumán, Publicación Miscelánea* 1: 1-110.
40. HAYWARD, K. J. 1960 (1958). Insectos tucumanos perjudiciales. *Revista Industrial Agrícola de Tucumán* 42(1): 3-144.
41. HERRICH-SCHAFFER, G. A. W. 1843. *Die Wanzenartigen Insecten*. C. H. Zehschen Buchhandlung, Nürnberg 7: 17-40.
42. HUSSEY, R. F. 1927. On some American Pyrrhocoridae (Hemiptera). *Bulletin of the Brooklyn Entomological Society* 22: 227-235.
43. HUSSEY, R. F. 1929. *General Catalogue of the Hemiptera*, fasc. 3: Pyrrhocoridae. Smith coll., Northampton, pp. 1-144.
44. KIRKALDY, G. W. & S. EDWARDS. 1902. Anmerkungen ueber bemerkenswerte Pyrrhocoriden (Rhynchota). *Wiener Entomologische Zeitung* 21: 161-173.
45. LAPORTE, F. L. de 1833. Essai d'une classification systématique de l'ordre des Hémiptères (Hémiptères-Hétéroptères, Latr.). *Magazin de Zoologie* 2: 17-88.
46. LEPELETIER, A. L. M. & J. G. A. SERVILLE. 1825. Histoire Naturelle Entomologie. *Encyclopedie Methodique* 10: 323.
47. LETHIERRY, L. & G. SEVERIN. 1894. *Catalogue Général des Hémiptères*- Tome II. Hétéroptères Coreidae, Berytidae, Lygaeidae, Pyrrhocoridae. F. Hayez, Bruxelles.
48. LINNÉ, C. 1764. *Museum Ludovicae Ulricaee Reginae Svecorum, Gothorum, etc.* Holmiae.
49. MARRERO H. J., D. L. CARPINTERO & S. M. ZALBA. 2008. Relevamiento de la diversidad de Heteroptera (Hemiptera) terrestres del cerro Cura Malal, provincia de Bs. As., Argentina. *Revista del Museo Argentino de Ciencias Naturales, nueva serie* 10(1): 29-35.
50. MISSOURI BOTANICAL GARDEN. Tropicos.org. [web page] <http://www.tropicos.org> (accessed on 26 Mar 2013).
51. MOLA, L. M. & A. G. PAPESCHI. 1993. Meiotic studies in *Largus rufipennis* (Castelnau) (Largidae, Heteroptera): frequency and behavior of ring bivalents, univalents and B chromosomes. *Heredity* 71: 33-40.
52. MOLA, L. M. & A. G. PAPESCHI. 1997. Citogenética de *Dysdercus chaquensis* (Heteroptera: Pyrrhocoridae). *Revista de la Sociedad Entomológica Argentina* 56: 20.
53. NANNI, A. S., A. L. MAGNANO & D. L. CARPINTERO. 2011. Los Heteroptera (Insecta: Hemiptera) edáficos del INTA Delta del Paraná (partido de Campana, Bs. As.). Variación espacial y temporal del elenco de las especies en distintos usos de la tierra. *Revista del Museo Argentino de Ciencias Naturales, nueva serie* 13(1): 27-39.
54. PARODI, L. R. & J. DIMITRI. 1988. *Enciclopedia Argentina de Agricultura y Jardinería*. ACME, Buenos Aires, Argentina.
55. PEARSON, E. O. 1932. Notes on the genus *Dysdercus* (Hemiptera- Heteroptera) in Trinidad, B. W. I. *Psyche* 39: 113-126.
56. PENNINGTON, M. S. 1920-1921. *Lista de los Hemípteros Heterópteros de la República Argentina*. Bs. As., pp. 47. (1921. Second part, pp. 17-28).
57. QUINTANILLA, R. H., A. E. MARGHERITIS & H. F. RIZZO. 1967-68. Catálogo de hemípteros hallados en la provincia de Entre Ríos. *Revista de la Facultad de Agronomía y Veterinaria de Buenos Aires* 17(1): 29-38.
58. QUINTANILLA, R. H., A. E. MARGHERITIS & H. F. RIZZO. 1975-76. Catálogo de hemípteros hallados en la provincia de Corrientes (Argentina). *Revista de la Sociedad Entomológica Argentina* 35(1-4): 115-133.
59. QUINTANILLA, R. H., H. F. RIZZO & A. E. MARGHERITIS. 1981. Catálogo preliminar de hemípteros hallados en la provincia de Misiones (Argentina). *Revista de la Facultad de Agronomía de Buenos Aires* 2(3): 145-161.
60. RIZZO, H. F. 1976. *Hemípteros de Interés Agrícola. Chinchas perjudiciales y chinchas benéficas para los cultivos*. Editorial Hemisferio Sur, Bs. As, Argentina.
61. RUFFINELLI, A. & A. A. PIRÁN. 1959. Hemípteros heterópteros del Uruguay. *Boletín de la Facultad de Agronomía, Montevideo, Uruguay* 51: 1-60.
62. SCHMIDT, V. E. 1931. Zur Kenntnis der Familie Pyrrhocoridae Fieber. (Hemiptera-Heteroptera). *Stettin Entomologische Zeitung* 92: 1-51.
63. SIGNORET, V. 1862. Description d'Hémiptères nouveaux de Jurimagnas et Moyabamba (Pérou). *Annales de la Société Entomologique de France* 2: 579-588.
64. SPINOLA, M. 1837. *Essai sur les genres d'insectes appartenants à l'ordre des Hémiptères, Lin. ou Rhyngotes, Fab. et à la section des Hétéroptères, Dufour*. Yves Graviers, Genoa.
65. STADLER, T., C. MERÉ & H. L. CAPPOZZO. 1987. La bionomía de *Dysdercus albofasciatus* Berg, 1878 (Hemiptera: Pyrrhocoridae), plaga del algodón: Su ciclo de vida, alimentación, estrategias adaptativas y enemigos naturales. *Boletín de Sanidad Vegetal - Plagas* 13: 143-159.
66. STÅL, C. 1870. Enumeratio Hemipterorum. Bidrag till en företeckning öfver alla hittills kända Hemiptera, jemte systematiska meddelanden. Pt. 1. *Kongliga Svenska Vetenskaps-Akademiens Handlingar* 9: 90-124.
67. TORRE BUENO, J. R. & THOMAS. 1915. Nota sobre Hemípteros del Chaco de Santiago del Estero. *Anales del Museo Nacional de Historia Natural de Buenos Aires* 26: 157-162.
68. VIANA, M. J. & G. J. WILLINER. 1972. Evaluación de la fauna entomológica y aracnológica de las provincias cuyanas (primera comunicación). *Acta Científica* 5: 1-29.
69. VIANA, M. J. & G. J. WILLINER. 1978. Evaluación de la fauna entomológica y aracnológica de las provincias centrales y cuyanas (cuarta comunicación). *Acta Científica, Serie Entomología* 11: 1-77.
70. ZULOAGA, F. O., O. MORRONE & M. J. BELGRANO (eds.). 2008. Catálogo de las plantas vasculares del Cono Sur (Argentina, sur de Brasil, Chile, Paraguay, y Uruguay). *Monographs in Systematic Botany from the Missouri Botanical Garden*. Pteridophyta, Gymnospermae, Monocotyledoneae. Vol. 1: v+xxi, 1-983; Dicotyledoneae. Acanthaceae- Fabaceae (*Abarema-Schizolobium*), Vol. 2: v+xx, 985-2286; Dicotyledoneae: Fabaceae (*Senna-Zygia*)-Zygophyllaceae, Vol. 3: v+xxi, 2287-3348.