

Epoxidation of Neral/Geranial Using a Jacobsen-Katsuki Mn catalyst by Chemical and Electrochemical Methods

Omar Portilla-Zúñiga,¹ Marco Fidel Mosquera-Ramírez,¹ Jaime Martín-Franco,² Olga Lucía Hoyos-Saavedra¹ and Germán Cuervo-Ochoa^{1*}

¹ Grupo de Investigación en Procesos Electroquímicos

² Grupo de Investigación en Química de Productos Naturales, Departamento de Química, Universidad del Cauca, Popayán 190003, Colombia

Corresponding author: Tel +573148114790 Fax +5728209800 ext 2306

Edificio de Laboratorios. Sector Tulcán. Carrera 2 No. 3N-100. Popayán, Cauca, Colombia

E-mail address: gcuervo@unicauca.edu.co (G. Cuervo-Ochoa)

Received June 15th, 2015; Accepted November 24th, 2015.

Abstract. In this study, *trans*-(±)-*N,N'*-bis(salicylidene)-1,2-cyclohexanediaminomanganese(III) chloride ([Mn(*t*-salcn)]Cl) was synthesized and used as a catalyst for the epoxidation of citral. The percentage of converted citral in two methods, chemical and electrochemical, was determined and compared; in the former method, the oxidizing agent NaClO was directly and completely added at the start of the reaction, while in the latter, ClO⁻ was progressively generated in situ. The reaction was monitored by the quantification of citral using gas chromatography coupled to mass spectrometry. The results showed that in both cases, the major products correspond to epoxides from citral isomers, although differences were observed in the value of percentage of epoxides obtained, besides the generation of side reactions affecting the yield of the product of interest.

Key words: Epoxidation; Electrochemical synthesis; Citral; Neral; Geranial.

Resumen. En este estudio se sintetizó el compuesto cloruro de *trans*-(±)-*N,N'*-bis(salicilideno)-1,2-ciclohexanodiaminomanganeso(III) ([Mn(*t*-salcn)]Cl) y se empleó como catalizador en la reacción de epoxidación de citral. Se determinó el porcentaje de conversión de citral al adicionar directa y completamente hipoclorito de sodio como agente oxidante desde el comienzo de la reacción y se comparó con el porcentaje de reacción de citral con el mismo agente oxidante generado progresivamente in-situ a través de un proceso electroquímico. El seguimiento de la reacción se realizó mediante la cuantificación de citral por cromatografía de gases acoplada a espectrometría de masas. Los resultados mostraron que en ambos casos los productos mayoritarios corresponden a epóxidos de los isómeros de citral, pero se encontraron diferencias en el valor de los porcentajes de epóxidos obtenidos, además de la generación de reacciones secundarias que afectan el rendimiento del producto de interés.

Palabras Clave: Epoxidación; Síntesis electroquímica; Citral; Neral; Geranial

Introduction

Epoxides are organic compounds of significance in fine organic synthesis; they are used as precursors to obtain molecules of biochemical interest. The 6,7-epoxide of citral is utilized for the synthesis of 1,2-epoxy-carotenoides such as 1,2-epoxy-lycopene and 1,2,1',2'-diepoxy-lycopene [1], which are well-known antioxidants and inflammatory mediators; it is also utilized for the synthesis of complex heterocyclic derivatives, which have permitted mechanistic investigation of reactions involving carbocations [2]. In addition, the 2,3-epoxide of the same compound is an important precursor for the synthesis of different benzofurans of interest, due to the biological activity of its derivatives [3]. Different reactions have been employed for the generation of epoxides [4,5], and studies have been ongoing with the aim of improving the yield and enantioselectivity of reactions [6-8].

Typically, epoxidation is conducted using a catalyst, which modifies the rate of reaction as well as controls the intensity

and the selectivity of oxidation. Jacobsen [9] reported one of the most representative studies on the epoxidation of olefins [9], in which the Schiff's base *N,N'*-bis(3,5-di-*tert*-butylsalicylidene)-1,2-cyclohexanediamine and manganese(III) was used as precursor of the complex *N,N'*-bis(3,5-di-*tert*-butylsalicylidene)-1,2-cyclohexanediaminomanganese(III) chloride, known as Jacobsen's catalyst. This catalyst and those of its type contain a Mn³⁺ metallic center, which is oxidized to Mn⁵⁺ at activation. Activation is performed by the addition of an oxidizing agent. For some widely studied epoxidation reactions with the use of Jacobsen-type catalysts [5,10-12], a high conversion percentage, as well as enantiomeric excess, has been reported.

Most of the abovementioned synthetic routes to epoxides involve a direct chemical reaction between the substrate and catalyst, which has been previously activated by an oxidizing agent added from the start into the reaction container. However, the oxidizing agent can compete with the catalyst for the substrate, thereby generating products with a degree of oxidation higher than that required for the epoxides.

In recent years, biphasic chemical and electrochemical systems have been employed [13,14], affording products of greater purity. Biphasic systems allow for the use of catalysts with low or null solubility in water, given that the activation of the catalyst possibly occurs at the interface between water and the organic solvent. In addition, in biphasic electrochemical systems, it is possible to control the amount of oxidizing agent and the rate at which it is added to the system so as to improve the percentage conversion as well as the selectivity of epoxidation. These systems permit the use of oxidizing agents that are soluble in water and insoluble in organic solvents, where direct contact between the oxidizing agent and the substrate is decreased.

The conventional oxidizing agents used in epoxidation are sodium hypochlorite [12], dimethyldioxirane [15, 16], iodosylbenzene [17, 18], and hydrogen peroxide [19, 20]; nevertheless, hypochlorite (ClO^-) is most commonly used because of its high percentage of active oxygen [21]. Jacobsen [12] and Meunier [22] have independently used ClO^- for the epoxidation of *cis*- β -methyl styrene and epoxidation of cyclohexane, respectively. The reaction between ClO^- and the catalyst involves the oxidation of the metallic center from Mn(III) to Mn(V) and the consequent reduction from ClO^- to Cl^- . The olefin substrate forms an epoxide, while the oxidized catalyst returns back to Mn(III) [23]. For epoxidation by the classical chemical method and using biphasic systems, ClO^- is completely added to the aqueous phase at the start of the reaction and remains in contact with the catalyst and substrate at the interface. Hence, reactions typically occur directly between the oxidant and substrate, generating undesired products (especially alcohols and/or aldehydes); these products decrease the yield of epoxide.

For electrochemical epoxidation in biphasic systems, ClO^- is electrochemically generated in the aqueous phase by the oxidation of Cl^- on the surface of a platinum electrode. The electrogenerated ClO^- migrates to the interface and activates the catalyst dissolved in the organic phase by the oxidation of its metallic center, while ClO^- is reduced again to Cl^- . Then, the substrate, also dissolved in the organic phase, forms an epoxide with the activated catalyst, while the catalyst returns to its original oxidation state (Fig. 1). Nevertheless, in this case, direct contact between ClO^- and the substrate can also occur at the interface and affect the yield and purity of the product, in the same manner as in the chemical process.

The principal difference between the chemical and electrochemical processes lies in the control of the rate of the addition of the oxidizing agent when it is generated electrochemically, and consequently in the lower ClO^- concentration at the interface as compared to the scenario observed in the chemical process. Because of this difference in the concentrations of ClO^- in the aqueous phase, and hence at the interface, it is imperative to establish the preference of the hypochlorite to react with the catalyst or with the substrate in the chemical and electrochemical reactions.

The electrochemical generation of the oxidizing agent in aqueous media is a methodology that contributes to reduce the use of auxiliary substances and toxic solvents. It also allows the atomic saving due to the fact that the amount of produced

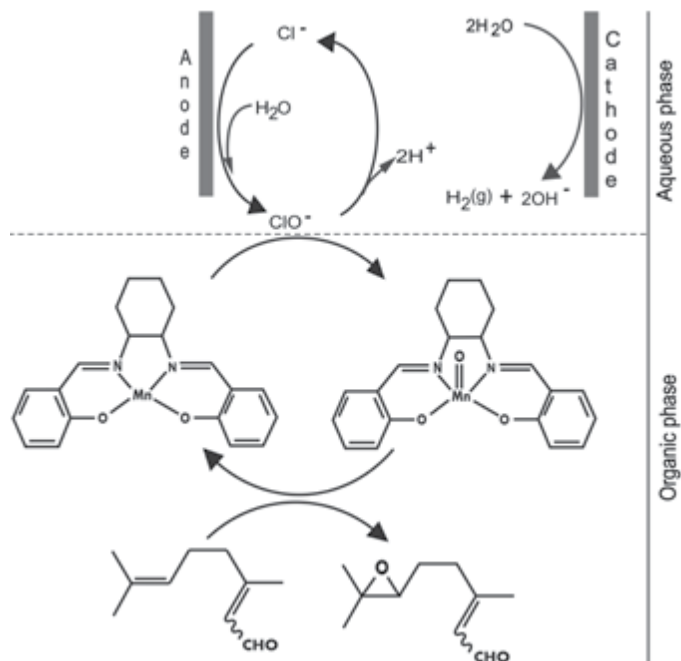


Fig. 1. Representation of electrochemical epoxidation mechanism in a biphasic system.

substance is just that required by chemical reaction. The reduction of number and quantity of residues is an additional benefit. Due to all these aspects, the electrochemical methods are considered an important tool for development of green chemistry [24, 25].

To determine the effect of the oxidizing agent on the percentage conversion in both chemical and electrochemical epoxidation, herein, we compared the performance of the epoxidation of citral using the *trans*-(\pm)-*N,N'*-bis(salicylidene)-1,2-cyclohexanediaminemanganese(III) chloride, a $[\text{M}(t\text{-salcn})]\text{Cl}$ -type catalyst, and the electrochemical generation of the oxidizing agent ClO^- utilized for catalyst activation, with the epoxidation of citral using the same catalyst, activated by the direct and complete addition of ClO^- from the start of the reaction. In both processes, biphasic systems were used. The aforementioned *trans*-(\pm)-*N,N'*-bis(salicylidene)-1,2-cyclohexanediamine manganese(III) chloride catalyst was synthesized by the electrochemical method via the reaction between Mn(III) and the *trans*-(\pm)-*N,N'*-bis(salicylidene)-1,2-cyclohexanediamine ($\text{H}_2t\text{-salcn}$) ligand, which was also synthesized in our laboratory.

In this study, the enantioselectivity of catalyst was not determined because the main purpose of the work was to establish the difficulties and advantages when electrochemical method is used to generate the oxidant agent in controlled form, respect to addition of the same oxidant agent like salt at the start of the reaction.

In this study, the substrate citral ($\text{C}_{10}\text{H}_{16}\text{O}$) or 3,7-dimethyl-2,6-octadienal is a mixture of two monoterpene aldehydes: geranial (2-(*E*)-3,7-dimethyl-2,6-octadienal) is the *trans* isomer, while neral (2-(*Z*)-3,7-dimethyl-2,6-octadienal) is the *cis* isomer [26, 27]. Citral is a natural

compound with significant potential in the pharmaceutical and chemical industries given its broad applications ranging from the generation of citric flavors and aromas to the synthesis of organic macromolecules [28-31]. The essential oil of *Cymbopogon citratus* is one of the main natural sources of citral, which is known as lemongrass or “limonaria,” in South America; it is an aromatic plant with broad global distribution, belonging to the family of Gramineae, with traditional therapeutic uses [32, 33].

Results and discussion

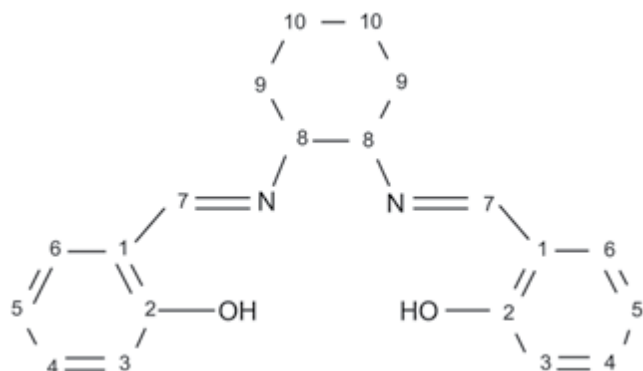
Synthesis and characterization of the H_2t -salcn ligand

The H_2t -salcn Schiff's base was obtained in 95% yield; it is not a conductor and is not soluble in water, but it is slightly soluble in non-polar chlorinated solvents such as dichloromethane and aromatic solvents such as toluene. Spectroscopic characterization via UV-Vis, FTIR, 1H NMR, and ^{13}C NMR confirmed that the structure of the compound obtained corresponds to the expected ligand (structure 1).

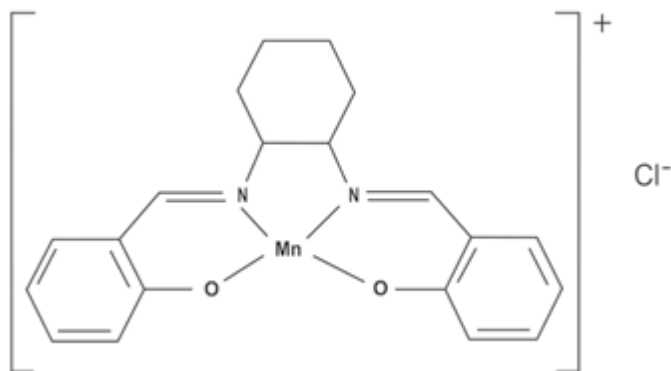
Electrosynthesis and characterization of the $[Mn(t\text{-salcn})]Cl$ complex

The yield of the complex synthesized at room temperature was 88.0%. The compound obtained was a 1:1-type electrolyte, indicating that Cl^- is outside the coordination sphere of manganese; moreover, it is soluble in chloroform, DMSO, and DMF, albeit with low solubility in water. Elemental analysis confirmed the general formula to be $C_{20}H_{20}N_2O_2MnCl$ (structure 2) without coordinated water. The percentage of chloride was obtained by potentiometric evaluation with $AgNO_3$, the percentage of Mn was obtained by atomic absorption spectrophotometry, and the percentage of oxygen was determined by difference.

The coordination of the ligand to manganese(III) was confirmed by FTIR spectroscopy, as evidenced by the variation in the absorption frequency of the $C=N$ group of the ligand and



Structure 1. *Trans*-(±)-*N,N'*-bis(salicylidene)-1,2-cyclohexanediamine (H_2t -salcn) ligand.



Structure 2. *Trans*-(±)-*N,N'*-bis(salicylidene)-1,2-cyclohexanediamine-manganese (III) chloride ($[Mn(t\text{-salcn})]Cl$).

the off-plane vibration of the $C-O$ bond. In addition, an anodic peak (-95 mV) and a cathodic peak (-265 mV) were observed in the cyclic voltammogram of the complex dissolved in MeCN with 0.1 M tetrabutylammonium perchlorate using a mercury drop electrode (Fig. 2), both characteristic of the complex, which were not observed for the ligand or metal. The quasi-reversible electrochemical signals are attributed to equilibrium between $[Mn^{II}\text{-salcn}]^0$ and $[Mn^{III}\text{-salcn}]^+$, in analog form to showed by Horwitz and co-workers [34].

Chemical epoxidation

The chemical process was examined by gas chromatography; with the increase in the concentration of the catalyst in the reaction system, the disappearance of citral progressively increased until it reached a value close to 77% with 5 mol% catalyst (Fig. 3). Moreover, with the increase in the catalyst concentration to 15 mol%, the rate of disappearance of the starting material slightly increased to 83%. Considering these results, a catalyst concentration of 5 mol% was employed in subsequent experiments.

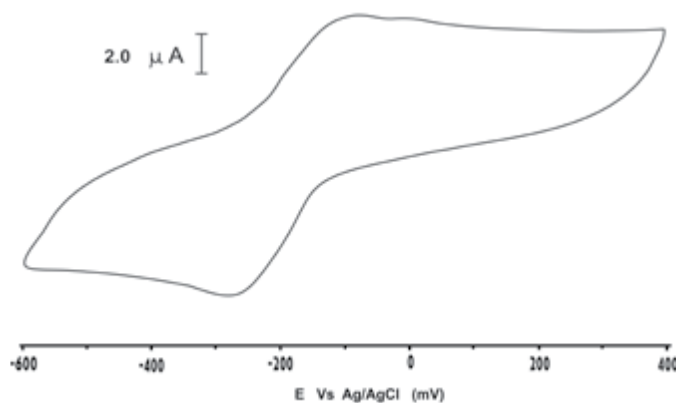


Fig. 2. Cyclic voltammetry for $[Mn(t\text{-salcn})]Cl$ complex dissolved in MeCN with 0.1 M tetrabutylammonium perchlorate at mercury drop electrode. Scan rate 100 mV/s.

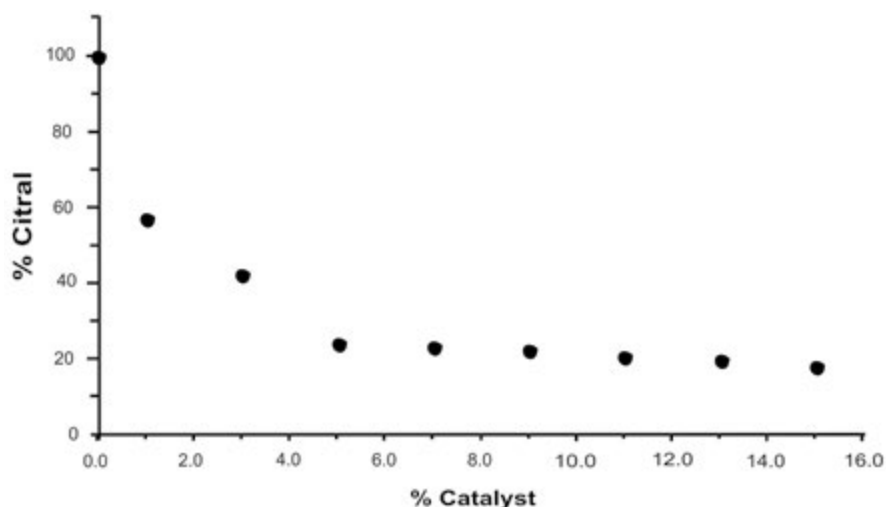


Fig. 3. Variation of the reaction percentage of citral as a function of catalyst concentration. Reaction time 8 h.

The percentage of the disappearance of citral reported was calculated after the subtraction of the loss of this substrate by volatilization at each stage during the progress of the experiment, which amounted to 14%. Moreover, after 4 h of the addition of the oxidizing agent, citral reaction percentage values reached 36%. Furthermore, at 8 h, the substrate conversion reached a maximum of 68%, and between 8 and 16 h, this percentage only increased marginally by 1%.

Fig. 4 shows the effect of the oxidizing agent with time; results obtained indicated that with the decrease in the concentration of ClO^- in the system, only one tenth of its initial value was reached at 8 h (Fig. 4). Taking into account that at 8 h, the conversion of citral reached only 68% and that the initial ClO^- concentration was stoichiometrically equivalent to that of citral, a less-pronounced decrease for the ClO^- content in the solution would be expected. Nevertheless, ClO^- was notably consumed more rapidly than the substrate, which

implies that the oxidant is consumed. This result suggest that ClO^- active the catalyst, but also directly reacts with citral or participates in secondary reactions possibly involving catalyst degradation.

Electrochemical epoxidation

Electrochemical generation of hypochlorite

The electrochemical generation of ClO^- from sodium chloride was carry out applying a current density of 20 mA/cm^2 , the initial and final potential values were 2.2 and 2.4 V respectively during eight hours. The process was monitored in the same manner as for the chemical method. Initially, ClO^- generated was evaluated in a blank cell, that is, without the presence of the catalyst and without citral. Thereafter, ClO^- from the

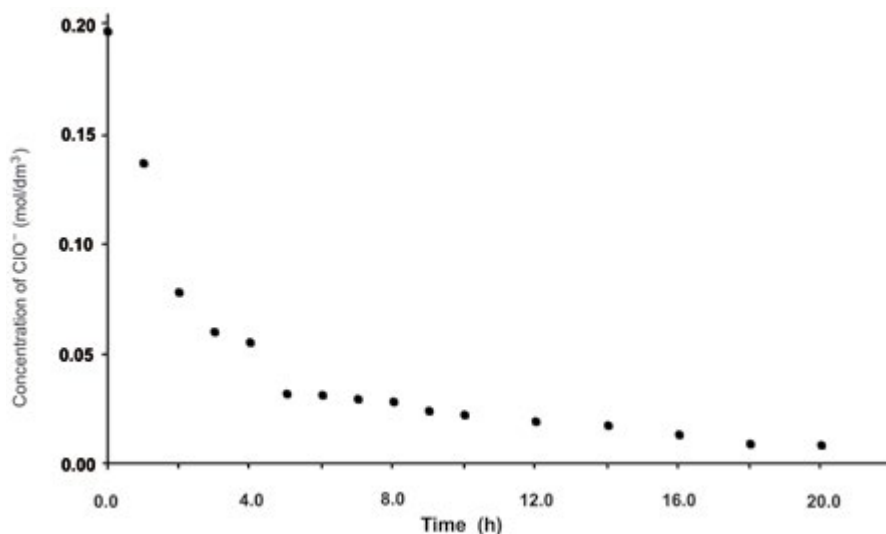


Fig. 4. Variation of the ClO^- concentration as a function of the epoxidation time for citral by the chemical method.

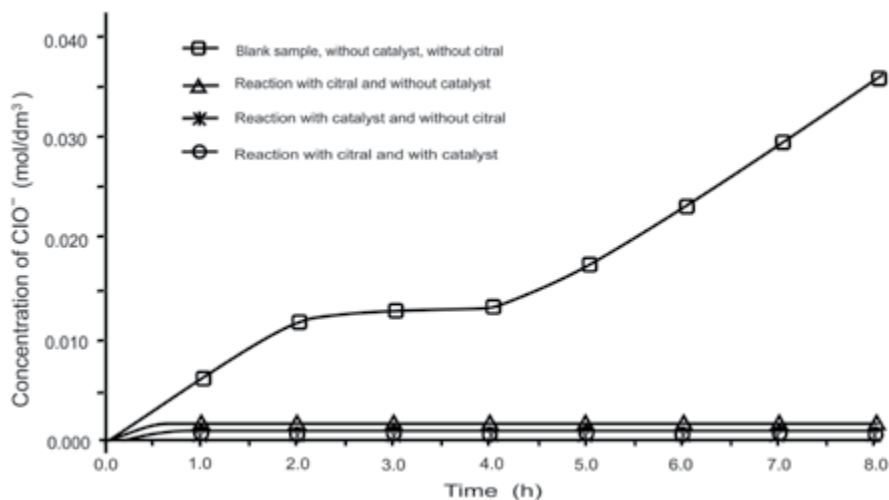


Fig. 5. Determination of hypochlorite generated during electrochemical epoxidation at 20 mA/cm² in the presence and absence of each component.

solution containing citral, and not the catalyst, was titrated. Third, ClO⁻ from the solution containing the catalyst but not citral was evaluated, and finally, ClO⁻ was titrated in the solution containing citral and catalyst at concentrations mentioned in the experimental section. The results obtained (Fig. 5) confirm the generation of ClO⁻ in the electrochemical cell, also indicating its increased concentration in the blank cell, as a function of time. For the cell with the catalyst, the electrogenerated ClO⁻ was completely and immediately consumed, indicating that the oxidizing agent reacts with the catalyst as expected; however, because the activated catalyst was not being used up (absence of substrate), the rate of disappearance of ClO⁻ would be expected to not be as high as that observed during titration. At this stage, it was not possible to verify whether the reaction between both species was as expected, that is, the oxidation of the metallic center of the catalyst and generation of chloride from hypochlorite. ClO⁻ also rapidly disappeared in the cell containing citral but not containing the catalyst, indicating that the substrate is directly oxidized by the oxidizing agent without catalyst mediation. Finally, upon assessing ClO⁻ generated in the cell containing citral and catalyst in the organic phase, the oxidizing agent immediately disappeared, confirming that hypochlorite rapidly reacts with both catalyst and substrate. Fig. 5 shows the evaluation curves for each of the cells previously described.

From the results obtained by the electrochemical method, a greater decrease of the substrate concentration at a reaction time of 4 h was observed as compared to that observed for the chemical method, with a citral reaction percentage of 42%. Moreover, at time greater than 4 h, the increase observed was less than 4%, which was attributed to the passivation observed on both electrodes as well as catalyst inactivation.

Electrode passivation observed at a reaction time greater than 4 h was attributed to the presence of an oily film, which was not observed in systems without the catalyst; thus, the oily film is attributed to the deposition of the catalyst or degradation products of the catalyst generated by reaction with ClO⁻. From

the aforementioned result, it is inferred that the catalyst is transferred from the organic phase to the aqueous phase. The presence of the catalyst in the aqueous phase was confirmed by UV-Vis spectroscopy: three well-defined absorption signals were observed, which disappear on the addition of ClO⁻. The partial loss of the catalyst means that there is less chance of reaction with citral as well as the passivation of the electrodes, resulting in the restriction or obstruction of the oxidation from Cl⁻ to ClO⁻.

The oily film deposited on the electrodes is possibly generated by the irreversible formation of μ -oxo-manganese(IV) inactive dimeric films on the anode of the cell, associated with the oxidation of the metallic nucleus of the catalyst, and likewise, to that generated in the C=N double bond of the organic ligand used in the complex, attributed to the use of oxidizing agents such as ClO⁻ [16], which could be responsible for the rapid disappearance of ClO⁻ in the cells containing only the catalyst.

Gas Chromatography–Mass Spectrometry Analysis

After 4 h of the reaction, the products generated from electrochemical epoxidation in the presence of the catalyst were extracted with hexane. Fig. 6 shows the chromatogram obtained from the analysis of the extract by gas chromatography coupled to mass spectrometry. The most intense signals were observed at 4.0 and 5.5 min, corresponding to neral and geranial isomers, respectively. To establish the citral reaction percentage, the sum of the areas of both isomers after the reaction time was determined and compared to the same sum of areas at zero reaction time, subtracting the loss of material during the different steps of the process. The following signal intensity is the internal pattern signal (eugenol), which appeared at 12.10 min. Signals were observed at 8.66 and 9.76 min, corresponding to the major products in the reaction; these signals appeared with an area significantly smaller than expected, given that material loss occurred during the extraction of the reaction products in case of citral isomers. For citral, such loss increased to 14%, while for

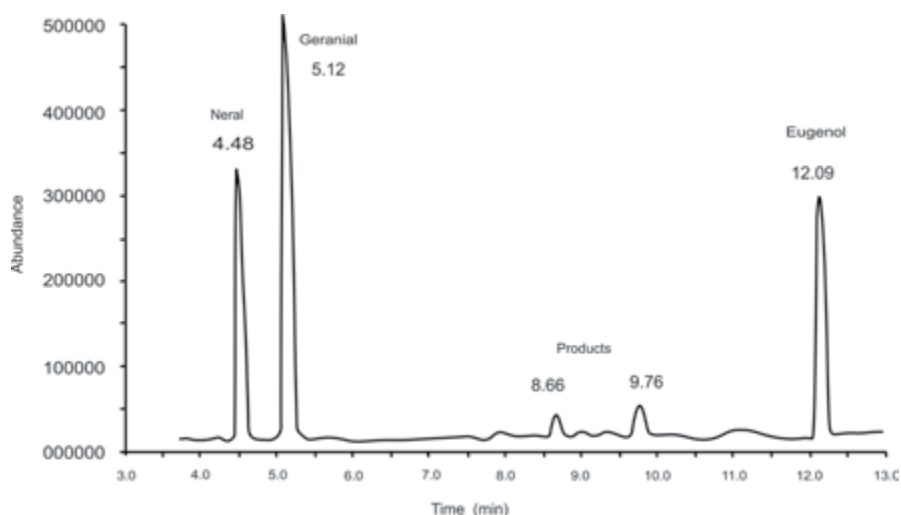


Fig. 6. Chromatogram obtained from the extract of the reaction products of the epoxidation of citral by the electrochemical process at a reaction time of 4 h.

the products generated, the percentage of loss could not be established. Fig. 7 shows the fragmentation patterns of the major products obtained by ionization through electronic impact.

As shown in the mass spectra in fig. 7a, the most intense signals were observed at m/z 82, corresponding to the base peak,

and m/z 95. From the mass spectra in fig. 7b, the base peak was observed at m/z 81, and another signal was obtained at m/z 97. In both cases, the m/z signals, which were lower than the base peak, coincide with the signals observed in the mass spectra of citral isomers. By analyzing the fragments of each signal, a

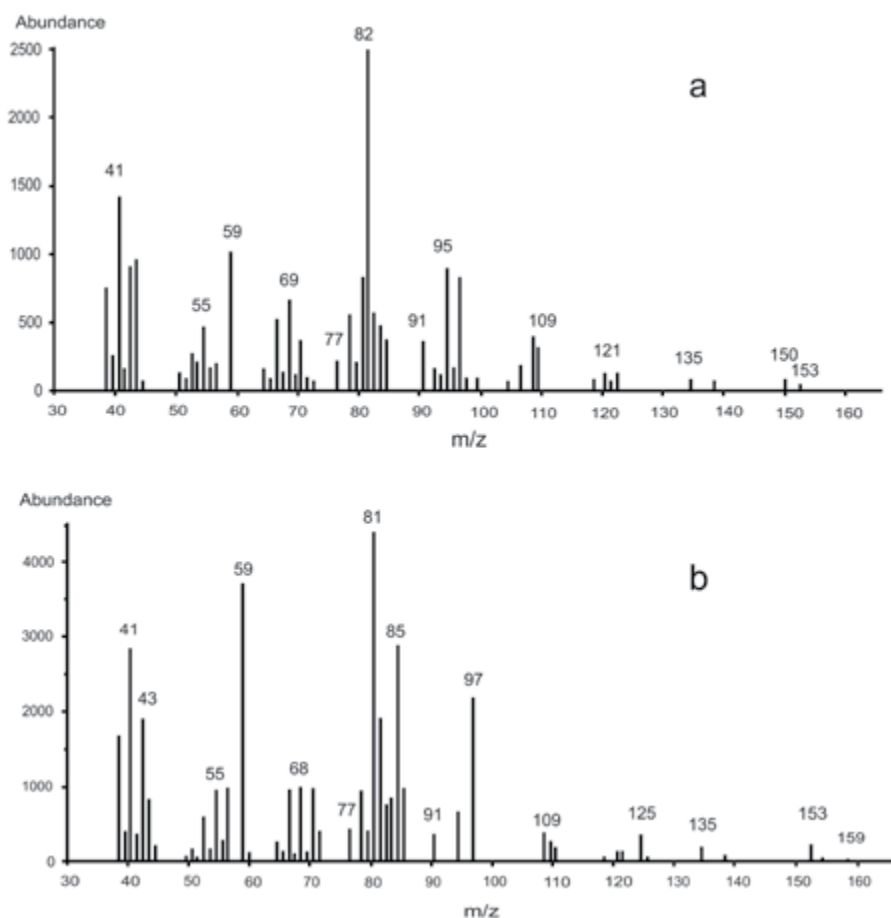


Fig. 7. Mass spectra obtained via electronic impact, showing signals at retention times of a) 8.66 min b) 9.76 min, from Fig. 5.

partition mechanism (Figures 8 and 9) was observed, where the starting species neral epoxide was generated, whose fractioning pattern coincided with the mass spectra in fig. 7a, and geranial epoxide whose fractioning pattern coincided with the mass spectra in fig. 7b.

The characteristic fragments for each citral epoxide had the formula $C_{10}H_{16}O_2$, consistent with the signal at m/z 168; this signal was not visible in the spectrum; however, despite having equal molecular mass, the neral and geranial epoxide isomers exhibited different fragmentation processes. The principal difference lies in the m/z ratio of the base peak given that fragmentation is directly related to the spatial orientation of the aldehyde group. For neral epoxide (*cis*-citral), the carbonyl group was the closest to the carbon chain; hence, fragmentation favors the formation of a stable five-membered heterocycle, corresponding to the base peak for the said epoxide (Fig. 8). Moreover, for geranial epoxide (*trans*-citral), the carbonyl group was away from the chain, which impedes the formation of the heterocycle described for neral, and consequently, fragmentation ends, generating a different base peak (Fig. 9).

The formation of the m/z 95 fragments of neral epoxide and m/z 97 fragments of geranial epoxide was explained in the same manner as the fragment base because of the proximity of

the carbon chain to the carbonyl group of the aldehyde. Neral epoxide favored the formation of a six-atom heterocycle, while in geranial epoxide, the proximity of the carbonyl as well as the formation of the heterocycle were impeded; hence, a stable linear fragment is formed. Figures 8 and 9 show the mechanisms proposed for the fragmentation of both citral epoxides based on the mass spectra from figures 7 a and b.

By analyzing the fragments, the epoxidation of citral was confirmed to occur at C_6 - C_7 positions. The fragment at m/z 85 was explained as a three-membered heterocyclic system: two carbon atoms and one oxygen atom; nevertheless, this last fragment was observed with high intensity in geranial epoxide, caused by the difference in the fragmentation mechanisms justified by the position of the aldehyde group with respect to the remainder of the carbon chain. From the aforementioned result, epoxidation clearly occurs primarily at the double bond between carbons C_6 and C_7 of citral given that this bond has a higher electronic density, caused by the presence of the bonded electron-donating groups. The epoxidation described is similar in its selectivity to the process performed with peroxy species; hence, it is presumed that the active species of the catalyst is a marked electrophile.

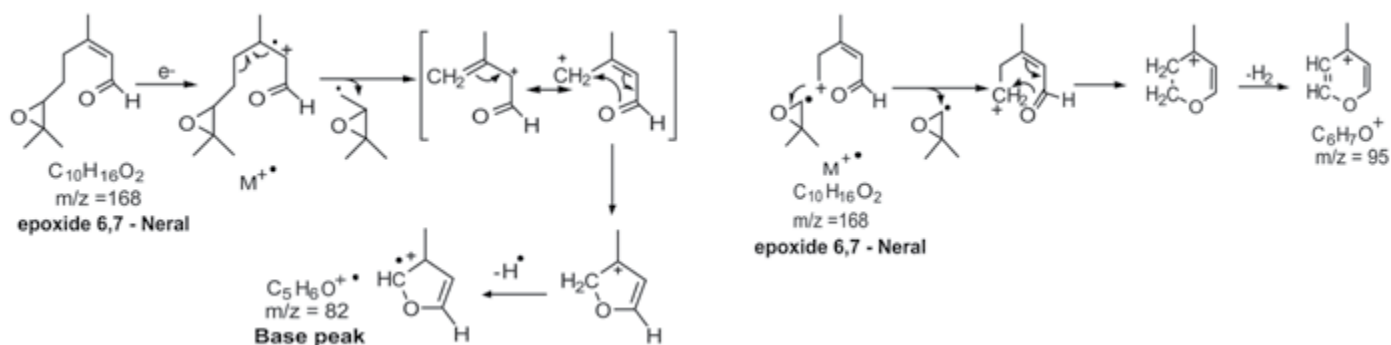


Fig. 8. Fragmentation pattern of 6, 7-neral epoxide.

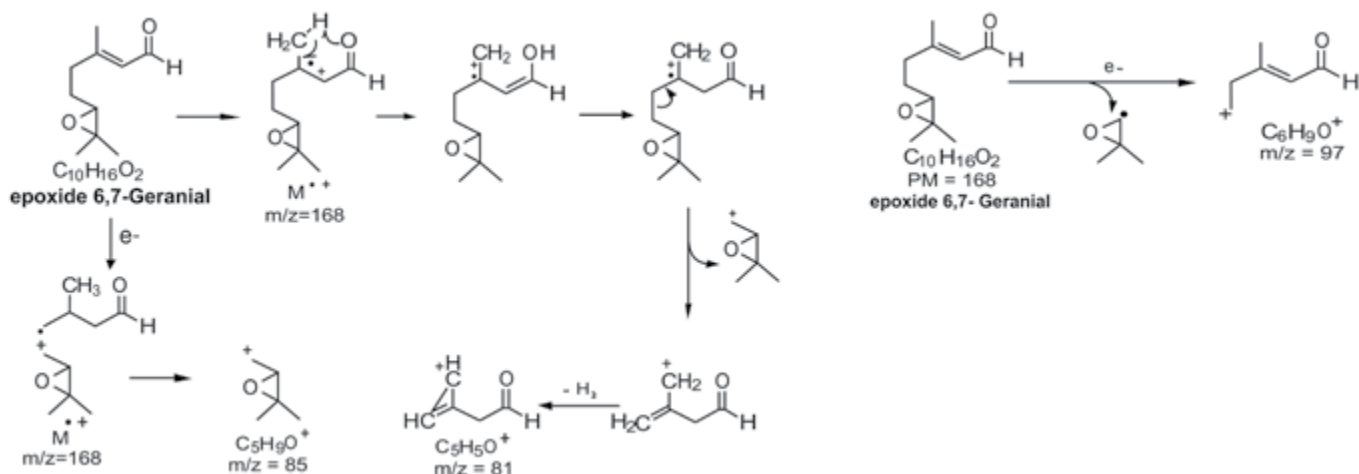


Fig. 9. Fragmentation pattern of 6, 7-geranial epoxide.

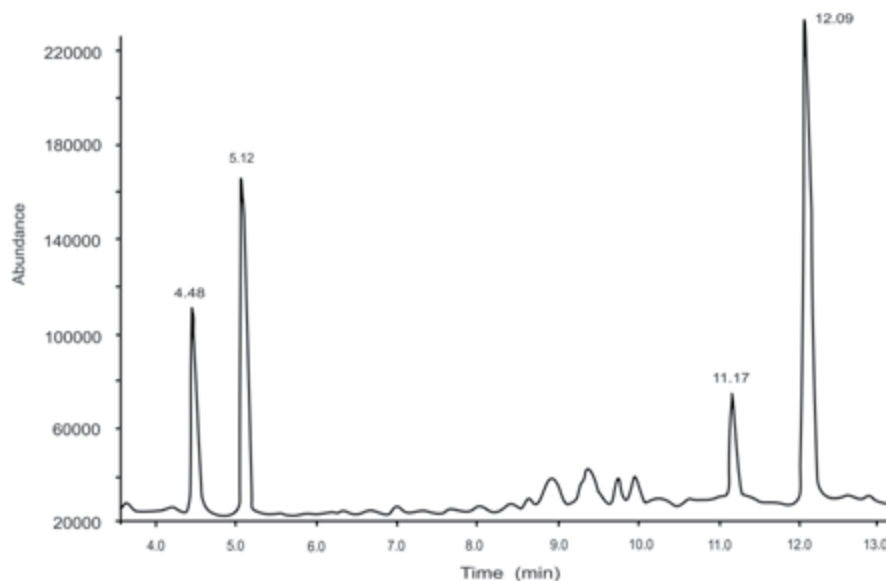


Fig. 10. Chromatogram obtained from products extracted from blank cell (system without catalyst) for chemical and electrochemical methods after 8 h of reaction.

From the gas chromatography analysis of the extract of the products from citral epoxide by the chemical method, peaks were also observed at retention times of 8.66 and 9.76; however, in this case, three additional signals with intensities and areas similar to those of epoxides were also observed, which were not identified. This is proof of the higher selectivity of the electrochemical process and suggests that ClO^- exhibits a greater affinity for the catalyst when ClO^- is added in a slow and controlled manner.

In case of the reaction blanks (systems without the presence of catalyst) in both chemical and electrochemical methods, the chromatograms obtained (Fig. 10) provided evidence for the formation of products different from the epoxides, which appeared at retention times coinciding with unidentified products of the chemical reaction; hence, it is inferred that these products correspond to the oxidation products of citral by the direct reaction with ClO^- . In addition, the major product was observed at a retention time of 11.17 min, whose fractionation pattern suggests the non-selective oxidation of double bonds of citral over simple epoxidation. This suggests that in a biphasic system, ClO^- can simultaneously participate in three reactions: first, the metallic center of the catalyst undergoes oxidation to achieve the activation of the last process, which is the complete process that culminates in the epoxidation of the substrate; second, the ligand catalyst undergoes oxidation, leading to the degradation of the complex, and finally, the direct oxidation of citral to alcohols or aldehydes.

Experimental section

Materials

HPLC-grade acetonitrile (MeCN), petroleum ether, GC-grade ethyl acetate (Fisher Scientific), citral (95%), GC-MS-grade

salicylaldehyde (Aldrich Chemistry), eugenol (99%), metallic manganese (Fluka Chemika), GC-grade dichloromethane (J.T. Baker), perchloric acid (72%), hydrated potassium dibasic phosphate (99%), monohydrated potassium monobasic phosphate (99%), GC-grade hexane, platinum sheets (1 cm²), platinum wire (0.3 mm) (99.99%), *trans*-(±)-1,2-cyclohexanediamine (99.5%), dimethylformamide (DMF), chloroform (Merck), tetrabutylammonium bromide (Aldrich), and dimethyl sulfoxide (DMSO) (Pancreac) were all used as received.

Synthesis of the H₂t-salcn ligand

First, salicylaldehyde was added to an aqueous solution of *trans*-(±)-1,2-cyclohexanediamine in a stoichiometric ratio of 2:1 and subjected to strong agitation for 45 min. The precipitate was filtered under vacuum, washed in water, and dried for 12 h at 70 °C.

trans-(±)-*N,N'*-bis(salicylidene)-1,2-cyclohexanediamine (H₂t-salcn) (**1**). Yellow powder mp: 117–119 °C, UV-Vis (CHCl₃, nm) 320 (π–π*); 256, (n–π*). Selected FTIR bands (KBr, cm⁻¹): 3500, ν-OH; 2930, ν_(cy)C–H; 2855, ν_(cy)-CH₂-; 1627, νC=N; 1499, νC=C; 1279, νC–O; 762, ν_(ar)=C–H; ¹H NMR (500 MHz, CDCl₃): δ 1.49–1.53 (2H, mc, cyclohexane, C₁₀H), 1.75–1.78 (2H, mc, cyclohexane, C₁₀H), 1.90–1.91 (2H, mc, cyclohexane, C₉H), 1.96–2.05 (2H, mc, cyclohexane, C₉H), 3.36–3.34 (2H, m, cyclohexane, N–C₈H), 6.81 (2H, dt, aromatic, C₅H), 6.93 (2H, dd, aromatic, C₃H), 7.25 (2H, dd, aromatic, C₆H), 7.30 (2H, ddd, aromatic, C₄H), 8.29 (2H, s, -N=C₇(H)-), 13.35 (1H, s, -OH-). ¹³C NMR (126 MHz, CDCl₃): δ 164.72, 160.98, 132.16, 131.49, 118.68, 118.60, 116.78, 72.69, 33.11, 24.19; EI MS *m/z*: 322 (M⁺) 201 (C₁₃H₁₁NO⁺) 122 (C₇H₇NO⁺) 77 (C₇H₇⁺). Elemental analysis (%): calculated: C, 74.51; H, 6.88; N, 8.69; Found: C, 74.54; H, 6.87; N, 8.58.

Electrosynthesis of the [Mn(*t*-salcn)]Cl complex

The reactions occurred at room temperature in an open system with a continuous current of 20 mA applied for 2 h in a cell comprising manganese and a platinum wire as the sacrificial anode and cathode, respectively, connected to a GW-Instek power source. The working solution was obtained by using the H₂*t*-salcn ligand (3.3 mg/mL) and lithium chloride (3.3 mg/mL) dissolved in acetonitrile with tetrabutylammonium perchlorate (0.1 M) as the supporting electrolyte. The solid formed was recovered by filtration and dried at 70 °C for 12 h.

trans-*N,N'*-bis(salicylidene)-1,2-cyclohexanediaminomanganese(III) chloride (**2**): Brown powder: mp > 300 °C; UV-Vis (CHCl₃, nm) 404 (d-d), 317 (π-π*), 254 (n-π*), 213 (n-π*). Selected FTIR bands (KBr, cm⁻¹): 3500, νH₂O; 1623, νC=N; 1314, νC-O; 753, ν_(ar)=C-H; 515-624, νMn-O; 425, νMn-N. Elemental analysis (%): calculated: C, 58.48; H, 4.91; N, 6.82, O, 7.79; Mn, 13.37; Cl, 8.63; Found: C, 57.77; H, 4.98; N, 6.24, O, 8.78; Mn, 13.28; Cl, 8.87; E_{1/2} V (SSCE) = -0.187.

Chemical epoxidation

Chemical epoxidation was conducted using a biphasic system consisting of a 15.0 mL aqueous solution of 0.20 M sodium hypochlorite and 0.05 M phosphate buffer solution (PBS) at pH 11, which were in contact with a 0.20 M citral solution and different amounts of the [Mn(*t*-salcn)]Cl catalyst (1-15 mol%); both the citral solution and catalyst were dissolved in 10.0 mL dichloromethane.

Electrochemical epoxidation

A GW-Instek power source (0-250 V) was used with two platinum electrodes 1.0 cm² each and with the application of a current density of 20.0 mA/cm² at different times (4, 8, and 16 h) to 15.0 mL of the aqueous phase composed of 1.0 M sodium chloride in 0.05 M PBS at pH 11.0. Fine measurement of current was done by a calibrated voltammeter (Technomaster inc.) and variation of ±1.0 mA was get it mean an electronic circuit fabricated in our laboratory. Ten milliliters of the organic phase with identical composition as that used in chemical epoxidation was utilized. The system was subjected to moderate magnetic agitation throughout the process.

At the end of the reaction time, 10.0 mL of hexane was added, and the phases were separated by decantation. The aqueous phase was washed with hexane (two times with 10.0 mL each). The organic phase obtained was allowed to decant for 10 min and centrifuged for 15 min, which resulted in the separation of the catalyst insoluble in hexane. Finally, the volume of the supernatant was adjusted to 50.0 mL with hexane and was analyzed by GC-MS.

In both reaction systems (chemical and electrochemical), 100 μL aliquots were taken from the aqueous phase at 1 h intervals, 0.10 g of potassium iodide and 1.0 mL of glacial acetic acid were added to 10.0 mL of water, and the aliquot solution was back-titrated with sodium thiosulfate using starch as the

indicator [35]. This back titration was used to determine the ClO⁻ concentration.

The products obtained from both chemical and electrochemical epoxidation were separated by column chromatography with silica (LC-Si Supelco[®]) with a diameter of 40 μm as the stationary phase and a 1:1 mixture of ethyl acetate-petroleum ether as the mobile phase, followed by GC-MS analysis. To monitor the reaction, the internal pattern method was used by the addition of 50 μL of eugenol to the crude reaction.

Conclusions

Hypochlorite exhibited a very strong oxidative capacity for the [Mn(*t*-salcn)]Cl complex, given that besides acting on the metallic center of the complex, it reacts with the ligand, resulting in the degradation of the catalyst as well as the deposition of species on the electrodes and passivation of the electrodes in the cell. Both aspects, catalyst loss and electrode passivation, decreased the yield of citral epoxide obtained from the electrochemical method as compared to that obtained from the chemical epoxidation after 4 h of reaction. Despite the aforementioned result, it may be inferred that a low concentration of ClO⁻ at the interface favors its reaction with the catalyst and not with the substrate, which is confirmed by the lower number of secondary products obtained by the electrochemical reaction as compared to those obtained by the chemical process.

The *trans*-(±)-*N,N'*-bis(salicylidene)-1,2-cyclohexanediaminomanganese(III) chloride complex exhibited catalytic activity directing the epoxidation of citral. However, it can migrate from the organic phase to the aqueous phase in the biphasic system. The presence of the catalyst in the aqueous phase made it more susceptible to degradation by reaction with the oxidizing agent.

The electrogeneration of the oxidizing agent in the reaction medium of a biphasic system is a viable route and a good alternative for studying and controlling chemical reactions. However, for the epoxidation of terpene, it is necessary to control the migration of the oxidized species from the catalyst toward the aqueous phase to avoid its degradation and obtain high efficiency with respect to the performance and purity of products.

Neral and geranial epoxides were confirmed as principal reaction products between citral and the [Mn(*t*-salcn)]Cl catalyst, activated by electrochemically generated ClO⁻. The products were confirmed by gas chromatography-mass spectrometry. In addition, epoxidation occurred in both isomers at the double bond located between carbons at 6 and 7 positions of citral, suggesting that that double bond exhibits nucleophilicity higher than that of the double bond located between carbons 2 and 3.

The following conditions were established for the chemical epoxidation of citral: catalyst concentration of 5 mol% and reaction time of 8 h; under these conditions, the percentage of citral conversion was greater than 60%. However, by the electrochemical method, a higher reaction percentage of 42% for citral was obtained in 4 h than with the chemical method (36%).

Acknowledgments

The authors thank Colciencias for providing support to G. Cuervo-Ochoa for the completion of his doctoral studies and for support through the Jóvenes Investigadores Program (2012), by which that entity collaborated with chemist Omar Miguel Portilla for this study, as well as Vicerrectoría de Investigaciones at Universidad del Cauca for financial support for the development of ID-3602 project, under which this study was developed.

References

- H. Pfander, M. Kamber and Y. Battegay-Nussbaumeferi, *Helv. Chim. Acta.* **1980**, 63, 1367-1376.
- O.I. Yarovaya, O.V. Salomatina, D.V. Korchagina, M.P. Polovinka and V.A. Barkhash., *Russ. J. Org. Chem.* **2002**, 38, 1594-1605.
- Y. Zou, M. Lobera, and B.B. Snider, *J. Org. Chem.* **2005**, 70, 1761-1770.
- T. Katsuki, K.B. Sharpless, *J. Am. Chem. Soc.* **1980**, 102, 5974-5976.
- P.G. Cozzi, *Chem. Soc. Rev.* **2004**, 33, 410-421
- B. Yang and T.A. Manz, *RSC Adv.* **2015**, 5, 12311-12322
- M. Cokoja, I.E. Markovits, M.H. Anthofer, S. Poplata, A. Pöthig, D.S. Morris, P.A. Tasker, W.A. Herrmann, F.E. Kühn and J.B. Love, *Chem. Commun.* **2015**, Advance Article
- B. Gao, J. Men and Y. Zhang, *Synth. React. Inorg. M.* **2015**, 45, 821-827
- E.N. Jacobsen, W. Zhang, A.R. Muci, J.R. Ecker, L. Deng, *J. Am. Chem. Soc.* **1991**, 113, 7063-7064
- I. Kuźniarska-Biernacka, A.R. Silva, R. Ferreira, A.P. Carvalho, J. Pires, M. Brotas de Carvalho, C. Freire and B. De Castro, *New J. Chem.* **2004**, 28, 853-858
- Q. H. Xia, H. Q. Ge, C. P. Ye, Z. M. Liu, and K. X. Su, *Chem. Rev.* **2005**, 105, 1603-1662
- W. Zhang, E.N. Jacobsen, *J. Org. Chem.* **1991**, 56, 2296-2298
- R. Zhao, Y. Tang, S. Wei, X. Xu, X. Shi, G. Zhang, *Reac. Kinet. Mech. Cat.* **2012**, 106, 37-47
- H. Tanaka, M. Kuroboshi, H. Takeda, H. Kanda, S. Torii, *J. Electroanal. Chem.* **2001**, 507, 75-81
- J. Reyes, J.A. Cubillos, C. Montes and A.L. Villa, *Ing. Investig.* **2008**, 28, 37-44
- J.A. Cubillo, S. Vásquez, C. Montes, *Appl. Catal. A.* **2010**, 373, 57-65
- J.P. Collman, L. Zeng, and J.I. Brauman, *Inorg. Chem.* **2004**, 43, 2672-2679
- R. Irie, K. Noda, Y. Ito, T. Katsuki, *Tetrahedron Lett.* **1991**, 31, 1055-1058
- G. Grigoropoulou, J.H. Clark and J.A. Elings, *Green Chem.* **2003**, 5, 1-7
- P. Pietikäinen, *Tetrahedron Lett.* **1994**, 35, 941-944
- A. Corma and H. García, *Chem. Rev.* **2002**, 102, 3837-3892
- B. Meunier, E. Guilmet, M.E. De Carvalho, R. Poilblanc, *J. Am. Chem. Soc.* **1984**, 106, 6668-6676
- T. Linker, *Angew. Chem. Int. Ed. Engl.* **1997**, 36, 2060-2062
- B.A. Frontana-Uribe, D. Little, J. Ibanez, A. Palma, R. Vasquez-Medrano. *Green Chem.* **2010**, 12, 2099-2119
- A. Palma, J. Cárdenas, B.A. Frontana-Uribe. *Green Chem.* **2009**, 11, 283-293
- M. Hall, B. Hauer, R. Stuermer, W. Kroutil, K. Faber, *Tetrahedron: asymmetry.* **2006**, 17, 3058-3062
- J. Gramshaw, K. Sharpe, *J. Sci. Food Agr.* **1980**, 31, 93-98
- O.I. Yarovaya, O.V. Salomatina, D.V. Korchagina, M.P. Polovinka, V.A. Barhash. *Butlerov communications.* **2002**, 2, 51-56.
- N. Tajidin, S. Ahmad, A. Rosenani, H. Azimah, M. Munirah, *Afr. J. Biotechnol.* **2012**, 11, 2685-2693
- P. Besse, H. Veschambre, *Tetrahedron.* **1994**, 50, 8885-8927.
- C. Mercier, P. Chabardes, *Pure Appl. Chem.* **1994**, 62, 1509-1518
- E.R. Vásquez, *Rev. Invest. Univ. Quindío.* **2010**, 20, 24-28.
- R. Negrelle, E. Gomes, *Rev. Bras. Pl. Med.* **2007**, 9, 80-92.
- C P. Horwitz, S. E. Creager, R. W. Murray, *Inorg. Chem.* **1990**, 29, 1006-1011
- APHA, AWWA, WEF. Standard Methods for examination of water and wastewater. 20th ed. Washington: American Public Health Association; **1998**, 4-53.