



Species at Risk (SPEAR) index indicates effects of insecticides on stream invertebrate communities in soy production regions of the Argentine Pampas



L. Hunt^{a,*}, C. Bonetto^b, N. Marrochi^b, A. Scalise^b, S. Fanelli^b, M. Liess^c, M.J. Lydy^d, M.-C. Chiu^a, V.H. Resh^a

^a University of California, Berkeley, Department of Environmental Science, Policy & Management, Berkeley, CA 94720-3114, USA

^b ILPLA (CONICET-CCT La Plata) – UNLP Instituto de Limnología “Dr. Raúl A. Ringuelet”, Boulevard 120 y 62, La Plata 1900, Buenos Aires, Argentina

^c UFZ, Helmholtz Centre for Environmental Research, System-Ecotoxicology, Leipzig, Germany

^d Center for Fisheries, Aquaculture and Aquatic Sciences, Department of Zoology, Southern Illinois University, Carbondale, IL 62901, United States

HIGHLIGHTS

- Increasing insecticide toxic units were associated with decreases in percent crustaceans and SPEAR_{pesticide} index values
- The SPEAR_{pesticide} index performed well for both benthic and emergent vegetation invertebrate communities
- Insecticides were more important in explaining variability in the SPEAR_{pesticide} index than other environmental stressors
- Total insecticides were better at predicting changes to invertebrate communities than were pyrethroids alone

GRAPHICAL ABSTRACT



ARTICLE INFO

Article history:

Received 16 August 2016

Received in revised form 28 November 2016

Accepted 2 December 2016

Available online 14 December 2016

Editor: D. Barcelo

Keywords:

Insecticides

Soybean production

Stream bioassessment

Aquatic toxicity

Macroinvertebrates

ABSTRACT

We investigated relationships among insecticides and aquatic invertebrate communities in 22 streams of two soy production regions of the Argentine Pampas over three growing seasons. Chlorpyrifos, endosulfan, cypermethrin, and lambda-cyhalothrin were the insecticides most frequently detected in stream sediments. The Species at Risk (SPEAR) pesticide bioassessment index (SPEAR_{pesticides}) was adapted and applied to evaluate relationships between sediment insecticide toxic units (TUs) and invertebrate communities associated with both benthic habitats and emergent vegetation habitats. SPEAR_{pesticides} was the only response metric that was significantly correlated with total insecticide TU values for all three averaged data sets, consistently showing a trend of decreasing values with increasing TU values ($r^2 = 0.35$ to 0.42 , p -value = 0.001 to 0.03). Although pyrethroids were the insecticides that contributed the highest TU values, toxicity calculated based on all insecticides was better at predicting changes in invertebrate communities than toxicity of pyrethroids alone. Crustaceans, particularly the amphipod *Hyalella* spp., which are relatively sensitive to pesticides, played a large role in the performance of SPEAR_{pesticides}, and the relative abundance of all crustaceans also showed a significant decreasing trend with increasing insecticide TUs for two of three data sets ($r^2 = 0.30$ to 0.57 , p -value = 0.003 to 0.04) examined. For all data sets, total insecticide TU was the most important variable in explaining variance in the SPEAR_{pesticides} index. The present study was the first application of the SPEAR index in South America, and the first one to use it to evaluate effects of pesticides on invertebrate communities associated with aquatic vegetation. Although

* Corresponding author.

E-mail address: lisahunt@berkeley.edu (L. Hunt).

the SPEAR index was developed in Europe, it performed well in the Argentine Pampas with only minor modifications, and would likely improve in performance as more data are obtained on traits of South American taxa, such as pesticide sensitivity and generation time.

© 2016 Elsevier B.V. All rights reserved.

1. Introduction

The Argentine Pampas, the central plain of Argentina, has a mild climate and very fertile soil. Previously covered by grasslands, it is now the most productive agricultural region of the country. Over the last several decades, soybeans have become a major export crop for Argentina, and increased pesticide use has led to concerns about environmental effects. Between 1995 and 2011, soy cultivation area expanded by 209% in Argentina (Castanheira and Freire, 2013). Pesticide consumption in Argentina increased from 6 million kilograms in 1992 (Pengue, 2000) to 32 million kilograms in 2012 (CASAFE, 2013). Insecticide application rates are approximately double those of fungicides, and the insecticides most frequently used in soy production (pyrethroids, chlorpyrifos, and endosulfan) have very high aquatic toxicity (Hunt et al., 2016; Nordborg et al., 2014).

Multiple studies have detected soy production insecticides in both sediment and water collected from streams in Argentina (Di Marzio et al., 2010; Hunt et al., 2016; Jergentz et al., 2005; Marino and Ronco, 2005; Mugni et al., 2011), but there is a lack of field studies investigating effects to aquatic invertebrate communities. Several studies in Argentina have found associations between stream insecticide concentrations and effects on the native amphipod *Hyaella curvispina* using single-species toxicity tests (Di Marzio et al., 2010; Jergentz et al., 2004a; Mugni et al., 2011). Also, Jergentz et al. (2004b) found that a pulse of endosulfan was associated with reductions in abundances of Odonata and Ephemeroptera in two small Pampas streams. However, to date no study in the region has documented widespread insecticide effects on aquatic invertebrate communities.

The Species at Risk pesticide index (SPEAR_{pesticides}) was developed in Europe to evaluate effects of pesticides on benthic macroinvertebrate communities (Liess and Von der Ohe, 2005), and has been applied successfully in several continents (Schäfer et al., 2012). Significant correlations have been found between the SPEAR_{pesticides} index and pesticide concentrations in streams in eight countries in Europe, as well as in Australia and Siberia (r^2 between 0.62 and 0.68) (Schäfer et al., 2012). The SPEAR_{pesticides} index has been shown to respond selectively to pesticide stressors and to be relatively insensitive to most other stressors, although its performance can be affected by severe habitat degradation (siltation and channelization) and low dissolved oxygen (Liess et al., 2008; Münze et al., 2015; Orlinkiy et al., 2015; Rasmussen et al., 2011; Schäfer et al., 2011; Schäfer et al., 2007).

The objectives of the present study were to: (1) evaluate relationships between insecticide concentrations in stream sediments and aquatic invertebrate communities of the Argentine Pampas using the SPEAR index; (2) examine the major changes in invertebrate communities associated with pesticide exposure; and, (3) test the applicability of the SPEAR index to invertebrate communities associated with both benthos and emergent vegetation.

2. Methods and materials

2.1. Study locations and sampling schedule

We carried out the study over a three-year period (Dec 2011–Feb 2014), monitoring 23 sites in small streams located in two regions of the Argentine Pampas, including an intensive soy production region and a mixed agriculture and livestock region (Fig. 1; Table S1). In the La Plata region, the principal land use was cattle grazing, with scattered

plots of soy production and other agriculture. In the Arrecifes region, intensive soy production was the predominant land use. In the La Plata region, seven sites were sampled during two monitoring events in the 2011 to 2012 soybean growing season, including four sampling sites in one watershed and the remaining three sites in separate watersheds. In the Arrecifes region, 16 sites were sampled over three years (2012–2014) during the soybean growing season, and all sampling sites were on tributaries of the Arrecifes River.

Catchments were delineated using topographical maps to estimate catchment size (Table S2). Substrates in streams of both regions generally consisted of sediment with no rocks and little woody debris, although a few sites in Arrecifes contained some gravel. Stream depths ranged from about 0.6 m to >2 m (only two sites, both in the La Plata region, were >1 m deep), and widths ranged from about 3 m to about 25 m (Table S2). Most streams included emergent (e.g. *Typha* spp. and *Scirpus* spp.) and submerged vegetation (e.g. *Potamogeton*, *Ceratophyllum*, and *Egeria*), and many in the La Plata region were also characterized by abundant floating vegetation (e.g. *Eichornia*, *Lemna*, and *Azolla*).

Biological, physico-chemical, and insecticide concentration components involved concurrent stream sampling that was generally timed to occur within a week after a heavy rainfall during or soon after the peak insecticide application period, which usually occurs between December and March. During the 2011–2012 growing season, samples in the La Plata region were collected in December 2011 and March 2012, and in the Arrecifes region in January and March 2012. During 2013 and 2014, samples were collected only in Arrecifes, in February of both years (Table 1).

2.2. Physico-chemical, habitat and geographical variables

At each sampling site, pH, conductivity, dissolved oxygen, and temperature were measured with a Yellow Springs Instruments SI 556 multi-parameter probe (Yellow Springs, OH, USA). During 2013–2014, turbidity was measured with a portable turbidity meter (Hanna Instruments 93414, Woonsocket, RI, USA). Sediment samples were collected for sediment grain size analysis, and organic carbon analysis by ferrous sulfate titration (USDA, 1996) (Table S2).

Water samples for analysis of nutrients and major ions were collected in 1 L polyethylene bottles and kept in coolers with ice until analyzing or freezing within 24 h of collection. Water samples were filtered (Whatman GF/C) and suspended solids were measured based on weight of filtered material. Dissolved nutrient and major ion concentrations were determined in the filtered water (APHA, 2005). Soluble reactive phosphorus was determined by colorimetry through reaction with molybdate-ascorbic acid; nitrite and nitrate by hydrazine reduction followed by diazotization; and ammonium by the reaction of indophenol blue (APHA, 2005). Calcium and magnesium were determined by atomic absorption, sodium and potassium by photometry, bicarbonates by Gran titration, sulfates by turbidimetry, and chlorides by silver nitrate titration (APHA, 2005).

At each site visit, maximum stream width and depth were measured. Catchments for each site were delineated in geographical information systems (GIS) using topographical layers, and catchment areas were calculated. Elevation and stream gradient immediately upstream of each site was estimated based on topographical contours (Table S2). At the Arrecifes sites sampled during 2013–2014, stream velocity was measured and approximate percent area coverage of emergent,

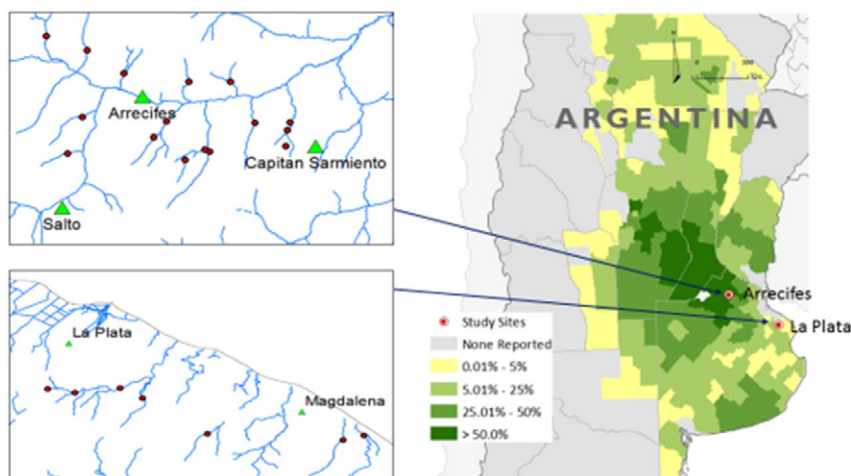


Fig. 1. Overview of study regions and soy production intensity in Argentina, and stream sampling locations in the La Plata and Arrecifes regions. Soy production intensity as percent of total land use by province based on government reported data: <http://www.minagri.gob.ar>.

submerged, and floating vegetation was estimated (Table S2), but no quantitative data on these parameters were collected at either the La Plata or Arrecifes sampling sites in 2011–2012

2.3. Sediment sample collection and insecticide analysis

The methods for sediment sample collection and analysis of insecticides have been previously described (Hunt et al., 2016). Briefly, composite sediment samples collected from the first 2 cm of sediment layer were prepared from three to five locations within a 50 m reach at each site, and insecticides were extracted from sediments by sonication (You and Lydy, 2007). Samples collected in 2011–2012 were analyzed for cypermethrin, lambda-cyhalothrin, endosulfan, and chlorpyrifos by gas chromatography-electron capture detection (GC-ECD) with a quantification limit of 0.5 ng/g dry weight. Samples collected in 2013–2014 were analyzed for the same insecticides plus additional pyrethroid and organochlorine insecticides using gas chromatography – mass spectrometry – negative chemical ionization (GC-MS-NCI) with a quantification limit of 0.25 ng/g dry weight.

2.4. Toxic unit calculation

Insecticide toxic units (TUs) were calculated for all sediment samples:

$$TU = C_i / EC50_i \quad (1)$$

Table 1

Invertebrate sample groups for SPEAR threshold optimization and regression analysis.

Group	Date	Region	SPEAR threshold optimization	Regression analysis (values averaged over two dates)
Benthos samples				
A	Dec 2011	La Plata (n = 7)	n = 12	n = 14 ^a
	Jan 2012	Arrecifes (n = 5)		
B	March 2012	La Plata (n = 5)	n = 12	n = 12 ^b
		Arrecifes (n = 7)		
C	Feb 2013	Arrecifes (n = 12)	n = 12	
D	Feb 2014	Arrecifes (n = 12)	n = 12	
Emergent vegetation samples				
E	Dec 2011	La Plata (n = 7)		n = 14 ^c
	Jan 2012	Arrecifes (n = 5)		
F	March 2012	La Plata (n = 6)		
		Arrecifes (n = 6)		

^a 10 sites with values averaged over two dates (Groups A and B), four sites sampled only once during 2011–2012.

^b 12 sites with values averaged over two dates (Groups C and D).

^c 11 sites with values averaged over two dates (Groups E and F), three sites sampled only once.

where C_i was the insecticide concentration in sediment normalized for total organic carbon (TOC), and $EC50_i$ was the 10-d median effects concentration for mortality or immobilization for each insecticide.

The sediment LC50 values for freshwater aquatic invertebrates were identified for sensitive species (Table 2). Most of the LC50 values used in the present study were for the amphipod *Hyaella azteca*, which is known to be very sensitive to pyrethroids and chlorpyrifos (Weston and Lydy, 2010). Although *H. azteca* does not occur in Argentina, several closely related species (e.g. *H. curvispina*, *H. pampeana*, and *H. pseudoazteca*) are important components of the aquatic invertebrate communities in the Pampas, and the pesticide sensitivity of *H. curvispina* has been shown to be similar to that of *H. azteca* (Mugni et al., 2013; Hunt, unpublished data). For endosulfan, *Chironomus tentans* was more sensitive than *H. azteca* (You et al., 2004); accordingly, the LC50 for *C. tentans* was used to calculate the TU. Toxicity of pesticides in sediment is highly dependent on organic carbon content; therefore, the concentrations were normalized for total organic carbon to calculate TU values.

The TU values for all insecticides were summed to calculate total insecticide TUs, and TU values for all pyrethroid insecticides were used to calculate total pyrethroid TUs. When summing TU values, all insecticides that were detected in the data set were included, assigning a concentration of half the quantification limit for pesticides that were not detected in the sample, or that were detected below the reporting limit. This approach was used because many of the insecticides were frequently detected below the reporting limit; thus, it was known that they were present, but could not be accurately quantified (Hunt et al.,

Table 2

Detection frequencies and maximum toxic units (TUs) for each sampling event, for insecticides that had at least one TU value > 0.01. TUs were calculated as the ratio of the carbon-normalized concentration in sediment over the carbon-normalized LC50. Insecticide concentrations were reported in Hunt et al. (2016).

Pesticide	LC50 (ng/g organic carbon)	Statistic	La Plata		Arrecifes			
			Dec 2011	Mar 2012	Jan 2012	Mar 2012	Feb 2013	Feb 2014
Chlorpyrifos	4160 ^a	Max TU	0.01	0.02	0.06	0.16	0.09	0.08
		Frequency ^b	29%	57%	86%	100%	100%	67%
Endosulfan	960 ^c	Max TU	0.32	0.04	0.14	0.18	0.01	0.09
		Frequency ^b	29%	14%	57%	43%	8%	17%
End. sulfate	5220 ^c	Max TU	0.28	0.07	0.08	0.10	0.12	0.03
		Frequency ^b	29%	14%	29%	57%	58%	33%
Cypermethrin	380 ^a	Max TU	0.05	nd	1.15	0.97	0.38	0.13
		Frequency ^b	29%	0%	29%	29%	33%	8%
L-cyhalothrin	450 ^a	Max TU	NA	0.02	NA	0.71	0.23	0.16
		Frequency ^b		0%		29%	17%	0%
Bifenthrin	520 ^d	Max TU	NA	NA	NA	NA	nd	0.36
		Frequency ^b					0%	17%
Total pyrethroid TU ^{e,g}		Mean TU	0.05	0.05	1.15	1.16	0.45	0.41
Total insecticide TU ^{f,g}		Max TU	0.66	0.14	1.23	1.36	0.51	0.54

^a LC50 for *Hyalella azteca* from Weston et al. (2013).

^b Frequency of detection above the highest quantitation limit of 0.5 ng/g dw in sediment.

^c LC50 for *Chironomus tentans* from You et al. (2004).

^d Frequency of detection above the highest quantitation limit of 0.25 ng/g dw in sediment.

^e Total pyrethroid TU values for each sample were calculated by summing the TU values for each pyrethroid.

^f Total insecticide TU values for each sample were calculated by summing the TU values for each insecticide.

^g A concentration value of half the quantitation limit was assigned for pesticides detected in the sample group, but not detected in the sample, or detected <QL in the sample.

2016). The data sets for each sampling event were not an adequate size to use a statistical approach, such as maximum likelihood estimate, to estimate values of concentrations below the quantification limit (Helsel, 2012). While this approach may overestimate total TU values in some samples, in most cases the insecticides not detected in a sample did not contribute > 1% of the total TU value. Insecticides that were measured but not detected in a given sampling event were not included in TU calculations for that sampling event.

2.5. Macroinvertebrate collection and identification

Benthic macroinvertebrate samples were collected by dragging a 30 cm D-frame dip net with 500 µm mesh (Wildco, Yulee, FL, USA) over the bottom sediment of each 1 m transect. Because of high variability in the number of organisms obtained, sample size was adapted over time to ensure a sufficient number of organisms in each sample (Table 1). In 2011–2013, all invertebrates from the entire composite sample (five transects, or approximately 1.5 m² in 2011–2012, and nine transects, or approximately 2.7 m² in 2013) were sorted and identified. In 2014, a subsampling method was used. A sample of approximately 2.7 m² was obtained at each site, and the sample material was homogenized and divided into 24 quadrats. Organisms from randomly selected quadrats were sorted until a total count of 500 organisms per sample was reached, or until organisms from all quadrats were sorted. This is close to the upper range of counts used in US biomonitoring programs involving fixed-numbers of organisms (Carter and Resh, 2013). Once initiating the sorting of a quadrat, it was finished to completion even if the target of 500 organisms was reached before finishing the quadrat. Sampled area was estimated based on the proportion of the sample counted, and abundance was normalized for the sampled area.

Macroinvertebrate communities associated with emergent vegetation were sampled only during 2011–2012, and only at sites with sufficient emergent vegetation. Five 1 m vegetation transects were swept with a 30 cm D-frame dip net (net opening area of approximately 600

cm²) with 500 µm mesh (Wildco, Yulee, FL, USA), for a total sample area of approximately 1.5 m². All invertebrates from the entire composite sample were sorted and identified.

All samples were preserved in the field in 80% ethanol, later sieved (500 µm) in the laboratory, sorted under 3× magnification, and identified under a stereoscopic microscope. Insects, hydroids, decapods, and amphipods were generally identified to family or lower level, and other taxa were identified by higher taxonomic groups (oligochaetes, nemerteans, turbellarians, leeches, nematodes, gastropods, bivalves, isopods, ostracods) using keys from Dominguez and Fernandez (2009) and Merritt and Cummins (2008).

2.6. SPEAR index and optimization of sensitivity thresholds

The SPEAR_{pesticides} index classifies each taxon as either “species at risk” or “species not at risk” based on four biological traits: (1) physiological sensitivity to organics compounds; (2) generation time; (3) pesticide exposure potential; and, (4) migration ability (Lies and Von der Ohe, 2005).

In the current version of the SPEAR_{pesticides} index (<http://www.systemecology.eu/spearcalc/>, Version 0.9.0), binary values are assigned for each trait as follows: (1) physiological sensitivity of 1 for taxa with relative sensitivity > threshold, otherwise 0; (2) generation time sensitivity of 1 for taxa with generation time ≥ threshold, otherwise 0; (3) exposure sensitivity of 1 for epibenthic taxa, or 0 for sediment-dwelling taxa; and, (4) migration sensitivity of 0 for organisms with documented ability to migrate rapidly, 1 for all others. A taxon is defined as “species at risk” only if values for all four traits are equal to 1.

The SPEAR_{pesticides} value for each sample is defined as:

$$\text{SPEAR}_{\text{pesticides}} = \frac{\sum_{i=1}^n \log(x_i + 1) \cdot y}{\sum_{i=1}^n \log(x_i + 1)} \cdot 100 \quad (2)$$

where n is the number of taxa, x_i is the abundance of the taxon i and y is 1 if taxon i is classified as “species at risk”, otherwise 0.

Generation times for each taxon in the established SPEAR database had been previously identified for European taxa (<http://www.systemecology.eu/spearcalc/index.en.html>) and Australian taxa (Schäfer et al., 2011). It is likely that generation times of similar multi-voltine taxa in the Pampas are shorter than in most temperate zones because they can reproduce during most of the year. Although reproduction of some taxa in Pampas streams may be reduced during some periods of the year, sufficient data do not exist to identify generation times of local taxa. In addition, the invertebrate community composition of Pampas streams may be different than communities in the more temperate streams where the SPEAR_{pesticides} index has been validated. Because the climate of the Argentine Pampas is more similar to that of Australia than that of Europe, and because taxa from South America and Australia may have shared genetic origins, it may be more appropriate to use trait data for Australian taxa than for European taxa, in the absence of sufficient Argentina taxa trait data. For the present study, we conducted the SPEAR analysis using generation time values for Australian taxa when available (Schäfer et al., 2011), supplemented by generation time values reported for European taxa (<http://www.systemecology.eu/spearcalc/index.en.html>) for taxa that had no data available in the Australian database.

In the present study, we used an optimization approach to adjust the pesticide sensitivity and generation time thresholds using Argentine Pampas data sets. The default threshold value for generation time is 0.5 yr (a taxon must have a generation time of at least 0.5 yr to be considered sensitive). For SPEAR_{pesticides}, the default threshold value for physiological sensitivity to pesticides is –0.36 (a taxon must have a relative sensitivity score greater than –0.36 to be considered sensitive). The relative sensitivity score for each taxon for a given pesticide is calculated as the mean of the ratios of all reported LC50 values for the taxon

divided by the mean *Daphnia magna* LC50 value. The overall pesticide relative sensitivity score for each taxon is calculated as the mean relative sensitivity value for all pesticides included (Von der Ohe and Liess, 2004). For the present study we used the most recent relative sensitivity scores based on globally reported data for all taxa within each family (<http://www.systemecology.eu/spearcalc/index.en.html>). The default sensitivity threshold value used for the SPEAR index (-0.36) was set so that approximately one half of the taxa were designated as sensitive and one half as insensitive. As invertebrate community composition is likely to change based on region and habitat conditions, these threshold values can be adjusted based on local invertebrate communities.

Although some taxa in the present study were identified to genus or species level, in many samples they could not consistently be identified to a level lower than family. Therefore we used family as the lowest taxonomic level for calculation of $\text{SPEAR}_{\text{pesticides}}$ values. Some families found in the present study were not included in the existing SPEAR databases for European and Australian taxa, and for these missing families we assigned the trait values available for higher taxonomic levels (Table S3).

For each data group A to E (Table 1), we simultaneously optimized the values for the pesticide sensitivity and generation time thresholds to achieve maximum inverse correlation between SPEAR values and log-transformed TU values. Global optimization was performed with the differential evolution algorithm, using the DEoptim package in R (Mullen et al., 2011). To avoid overfitting to data sets with small sample size, optimum threshold values calculated for each of the four benthic invertebrate sample groups (A–D) were averaged to obtain final threshold values applied to all benthic and vegetation-associated invertebrate samples. It is reasonable to expect that the optimum threshold values may be different for vegetation-associated communities than for benthic communities, but there were too few vegetation-associated invertebrate samples to perform optimization without high potential for overfitting.

The default SPEAR exposure potential values are based on exposure in the water column because the $\text{SPEAR}_{\text{pesticides}}$ index has mostly been related to pesticide concentrations in water. However, insecticides in the present study were measured in sediment, because these insecticides are hydrophobic and more likely to be adsorbed to sediments than to be dissolved in water. Therefore, insecticide exposure to both epibenthic and sediment-dwelling organisms is likely to be high. Consequently, as part of the $\text{SPEAR}_{\text{pesticides}}$ optimization process, we compared the results using default taxa exposure values, and exposure values of 1 (exposed) for all epibenthic and sediment-dwelling taxa.

2.7. Additional bioassessment metrics

In addition to the $\text{SPEAR}_{\text{pesticides}}$ index, we calculated the relative abundance metrics of taxa groups that were selected based on their high abundance in the region (Table S3), and/or known high sensitivity or tolerance to pesticides and other pollutants (Table 3) (Chang et al., 2014; Rubach et al., 2010). We also calculated the Shannon diversity index and taxa richness. Samples containing >300 organisms were rarefied to a constant size of 300 organisms to reduce the effect of sample size (Barbour and Gerritsen, 1996).

2.8. Regression analysis

We performed regression analysis on three data sets, each of which contained variable values that were averaged over two sampling events (Table 1). For benthic invertebrate samples, we used average values for the two events in 2011–2012, and for the two events in 2013–2014. For vegetation-associated invertebrate samples, we used average values for the two events in 2011–2012.

First, we calculated univariate linear regression relationships (lm function in R version 3.2.2) between insecticide TU values (log transformed) and all response metrics (Table 3). For metrics that were

significantly correlated with log TU values, we then performed multiple linear regression to evaluate the relative importance of insecticides and other variables in determining variance in each response metric.

At each site we had measured values for many water quality, habitat, and watershed characteristics (Table S2), many of which were highly correlated. Given the sample size of each data set, we had to limit the number of predictor variables to include only those most likely to independently effect the response variables. We did not include parameters that did not vary much between sites, or ones that had missing values for some sites. To avoid predictor variables with high collinearity and interdependence, we first used a correlation matrix (Table S4) to select variables that were highly correlated with response variables, but not with other predictor variables. For each data set, we selected one parameter from each parameter group type (e.g. nutrients, salinity, stream size, and habitat). After initial variable selection, we checked variance inflation factors (VIFs) with the full model to avoid high collinearity (“vif” function in R package “cor”) to confirm that all VIFs for all variables were <3 .

We then selected the best predictive models based on Akaike information criterion values corrected for small sample size (AICc) and p-values. The ΔAICc for each model was calculated as the difference between the AICc for the model and the lowest AICc of all models. For each predictor variable in selected models with $\Delta\text{AICc} < 4$ and p-value < 0.05 , we determined the magnitude and direction of coefficients using multi-model averaging across selected models (Grueber et al., 2011) using the dredge and model.avg functions in the R package MuMIn version 1.15.1 (Barton, 2015), using partial standard deviations of predictor variables to standardize for differences in scales resulting from multicollinearity (Cade, 2015). Relative importance was calculated as the model-averaged ratios of absolute values of standardized coefficients based on the AIC model weights (Cade, 2015). These ratios are scaled relative to a maximum of 1.0 for the strongest predictor within each model. Importance ranges from 0 (parameter not given any explanatory weight in any of the selected models) to 1 (parameter included and assigned highest relative importance in all selected models).

3. Results

3.1. Insecticide TU values

The most commonly detected insecticides were those that are reported to be the most heavily used in soy production in Argentina: chlorpyrifos, endosulfan (and its degradation product endosulfan sulfate), cypermethrin, and lambda-cyhalothrin (Table 2). Bifenthrin and organochlorine insecticides were detected only occasionally.

Insecticide detection patterns varied between the two regions. In the mixed agriculture region of La Plata, the maximum total insecticide TU values for the 2011 and 2012 sampling events were 0.66 and 0.14 (based on *C. tentans* and *H. azteca*), and chlorpyrifos was the only insecticide that was consistently detected. In the intensive soy production region of Arrecifes, maximum total insecticide TU values for the four sampling events ranged from 0.51 to 1.36, and multiple insecticides were detected at most locations (Table 2). In Arrecifes, pyrethroid (cypermethrin and lambda-cyhalothrin) concentrations were the primary contributors to high TU values, while in La Plata endosulfan was the primary contributor.

3.2. $\text{SPEAR}_{\text{pesticides}}$ threshold optimization

Based on optimization results, we selected $\text{SPEAR}_{\text{pesticides}}$ trait sensitivity threshold values to use for the regression analysis. The pesticide sensitivity threshold was optimized at a range between -0.24 and 0.06 , and we arbitrarily selected a value of -0.2 as there is no difference in results as long as the selected value is within the optimized range. Similarly, the generation time threshold was optimized at a range between 0 and 0.5 year, and we selected a value of 0.5 because this is

Table 3
Optimized SPEAR_{pesticides} thresholds, relative taxa abundance, and univariate regression results.

Response variable			Univariate regression results						
			Data group	Total insecticide TU			Pyrethroid TU		
				Trend ^a	r ²	p-Value	Trend ^a	r ²	p-Value
Benthic invertebrate communities									
Optimized SPEAR thresholds									
SPEAR _{pesticides}	Sensitivity	Generation time (yr)	2011–12 2013–14	–	0.35 0.39	0.03 0.03	–	0.10 0.58	0.28 0.004
	Community Metrics mean (min – max)								
Richness	La Plata	Arrecifes	2011–12		0.24	0.07		0.14	0.19
	6.6 (2–15)	12 (3–26)	2013–14		0.09	0.36		0.02	0.68
Diversity	0.90 (0.26–2.2)	1.4 (0.37–2.5)	2011–12		0.14	0.19		0.05	0.46
% Crustacea	32 (0–96)	6 (0–35)	2013–14		0.10	0.31		0.05	0.47
			2011–12	–	0.57	0.002	–	0.35	0.03
% Amphipoda	16 (0–83)	5 (0–33)	2013–14		0.04	0.51		0.09	0.33
			2011–12	–	0.53	0.003	–	0.36	0.02
% Ephemeroptera	1.3 (0–9.0)	23 (0–83)	2013–14		0.04	0.51		0.09	0.34
			2011–12		0.00	0.74		0.04	0.49
% Trichoptera	0 (0–0)	1.1 (0–16)	2013–14		0.01	0.73		0.01	0.74
			2011–12 ^b		–	–		–	–
% EPT	1.3 (0–9.0)	24 (0–83)	2013–14		0.21	0.14		0.15	0.22
			2011–12		0.00	0.74		0.04	0.49
% Diptera	3.1 (0–15)	20 (0–89)	2013–14		0.00	0.88		0.00	0.86
			2011–12		0.20	0.11		0.25	0.07
% Chironomidae	2.6 (0–15)	19 (0–83)	2013–14		0.00	0.99		0.00	0.97
			2011–12		0.22	0.09		0.27	0.06
% Oligochaeta	40 (0–91)	16 (0–83)	2013–14		0.00	0.99		0.00	0.95
			2011–12		0.20	0.11		0.01	0.70
% Bivalvia	2 (0–12)	4 (0–38)	2013–14		0.00	0.87		0.02	0.70
			2011–12		0.08	0.32		0.05	0.46
% Gastropoda	4 (0–17)	16 (0–89)	2013–14		0.32	0.05	–	0.47	0.01
			2011–12		0.01	0.78		0.04	0.49
			2013–14		0.01	0.72		0.04	0.54
Vegetation-associated invertebrate communities									
Optimized SPEAR thresholds ^c									
SPEAR _{pesticides}	Sensitivity	Generation time (yr)	2011–12	–	0.42	0.01		0.14	0.19
	Community metrics mean (min–max)								
Richness	La Plata	Arrecifes	2011–12		0.05	0.42		0.09	0.28
	13(4.3–25)	18(5.3–30)	2011–12		0.17	0.14		0.15	0.17
Diversity	1.4(0.3–2)	1.7(0.8–2.9)	2011–12		0.17	0.14		0.15	0.17
% Crustacea	41 (0–94)	25 (0.1–68)	2011–12	–	0.34	0.03		0.07	0.37
% Amphipoda	40 (0–94)	23 (0.1–67)	2011–12	–	0.29	0.04		0.06	0.39
% Ephemeroptera	0.7 (0–3.1)	19 (0–70)	2011–12		0.2	0.60		0.03	0.56
% Trichoptera	0.2 (0–2.1)	0.1 (0–0.8)	2011–12		0.02	0.62		0.00	0.82
% EPT	0.9 (0–5.2)	19 (0–71)	2011–12		0.02	0.60		0.03	0.57
% Diptera	4.7 (0–42)	12 (0.3–34)	2011–12		0.03	0.56		0.07	0.37
% Chironomidae	1.3 (0–5.5)	7.9(0.2–23)	2011–12		0.11	0.25		0.13	0.21
% Oligochaeta	14 (0–71)	16 (0–63)	2011–12		0.18	0.13		0.05	0.46
% Bivalvia	0.1 (0–0.7)	0.1 (0–0.7)	2011–12		0.02	0.62		0.00	0.82
% Gastropoda	6.5 (0–36)	5.9 (0–34)	2011–12		0.17	0.13		0.00	0.79

^a “+” signifies positive significant correlation, “–” signifies negative significant correlation.

^b No trichoptera were present in benthic samples collected in 2011–2012.

^c Thresholds optimized for benthic samples were applied to vegetation samples, because too few vegetation data sets were available to optimize thresholds.

the threshold value that has been applied in other SPEAR_{pesticides} studies. Applying these threshold values, the only taxa that were considered sensitive with respect to all four traits (overall SPEAR_{pesticides} score of one) were the trichopteran family Hydroptilidae, and all Crustacea taxa (Hyalellidae, Palaemonidae, Aeglidae, Caridae, Ostracoda). For most data sets, slightly better correlations were achieved when exposure values for all taxa (both epibenthic and sediment-dwelling) were set equal to 1 (sensitive with respect to exposure), so we set exposure values equal to 1 for all taxa.

3.3. Univariate linear regressions

SPEAR_{pesticides} was the metric that performed most consistently well in predicting invertebrate community response to insecticides.

SPEAR_{pesticides}, % crustaceans, and % amphipods were the only response metrics that were significantly correlated with insecticide TUs for more than one data group (Table 3). The only other community metric that exhibited a significant correlation with TU was % bivalvia, which was inversely correlated with pyrethroid TU only for the 2013–2014 benthos data group. SPEAR_{pesticides} was the only response metric that was significantly correlated with total insecticide TU values for all three averaged data sets, consistently showing a trend of decreasing values with increasing TU values ($r^2 = 0.35$ to 0.42 , p -value = 0.001 to 0.03) (Table 3; Fig. 2). Percent crustaceans and % amphipods were significantly correlated with total insecticide TU values in two of the three data groups. The relative abundance of both crustaceans and amphipods were highly correlated for all data sets ($0.39 < r^2 < 0.98$; p -value < 0.018), and the two metrics performed very similarly (Table 3).

Total insecticide TU was usually a better predictor than pyrethroid TU for the three most responsive metrics (SPEAR_{pesticides}, % crustaceans, and % amphipods), with the exception of the 2013–2014 benthos data group. Although significant correlations were obtained between pyrethroid TU and some predictor variables (SPEAR_{pesticides}, % crustaceans and % amphipods), the correlations were weaker than those for total insecticide TU.

3.4. Relative importance of predictor variables

Based on univariate results, two response metrics (SPEAR_{pesticides} and % crustacea) were selected for multivariate linear regression to determine the relative importance of insecticide TU and non-pesticide parameters. Amphipods were not included as a separate response metric in this analysis because their response is very similar to that of total crustacea (Table 3).

For all data sets, total insecticide TU was the most important variable in explaining variance in the SPEAR_{pesticides} index (Table 4). The relative variable importance of total insecticide TU ranged from 0.85 to 1.00 for the three data groups. Relative importance of non-pesticide predictor variables used in models that included total insecticide TU ranged from 0.06 to 0.28.

Chloride was important in explaining variability in relative abundance of crustaceans, but less so for SPEAR_{pesticides}. Major ions were measured only in 2011–2012, and many of the eight major ions were found to be collinear with each other, with conductivity, and with TU values. To avoid redundancy, chloride was the only ion selected as a predictor variable in the full models for 2011–2012, because it had low negative correlation with TUs and high correlation with two response metrics (SPEAR_{pesticides} and % crustacea). For the 2013–2014 data set, conductivity was selected instead of chloride, because major ions were not measured. Chloride was identified as a variable with low to high importance in most of the 2011–2012 averaged models (Table

4). In particular, it had high importance in explaining the variance in % crustacea (relative importance 0.57–1.00), with relative abundance of crustaceans increasing with chloride concentration. Total conductivity was not found to be important in explaining variance of any response metrics for the 2013–2014 data set. For 2011–2012, the models were also run using conductivity in place of chloride to compare their relative importance, with the importance of conductivity being consistently lower than chloride (not shown).

In some cases nutrient concentrations exhibited low or moderate correlations with the SPEAR_{pesticides} index, but the direction of correlation was not consistent (Table S4), and they had no apparent influence on the relative abundance of crustaceans. Nutrient concentrations were measured during all sampling events, and some nutrients were collinear (Table S4). Most were also positively correlated with TU values, but not with response metrics. Soluble reactive phosphorous (SRP) was selected as a predictor variable in the full models, because it had low correlation with TUs. SRP was identified as a variable with low to moderate importance in the SPEAR_{pesticides} models, but had no importance in explaining variance in % crustacea (Table 4).

Stream size did not appear to influence the SPEAR_{pesticides} index values, but was more important in explaining variability in crustacean abundance. Several metrics were available to represent stream size, including width, depth, elevation, gradient, and catchment area. Depth was selected as a predictor variable in the full models, because it was the stream size variable with lowest correlation with TUs. Depth was identified as an important variable for only one data set (2011–2012 benthos), where it had high importance in explaining % crustacea (Table 4).

Percent floating vegetation was the type of vegetation most highly correlated with response metrics, and was included in the full model for 2013–2014 but was not found to be an important predictor for any metric. Vegetation was not included in the 2011–2012 models because no quantitative data were collected.

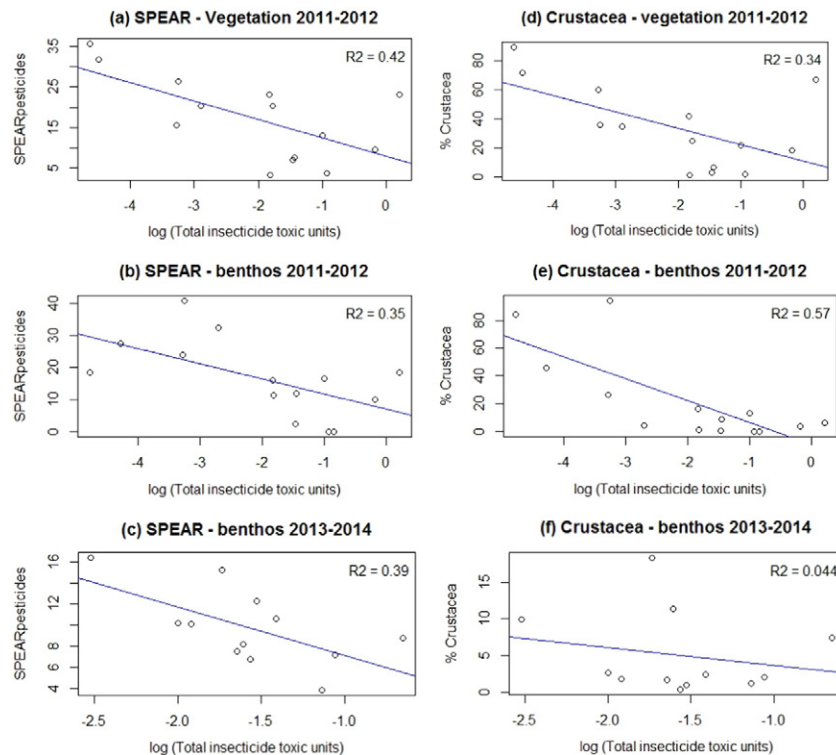


Fig. 2. Univariate linear regression between total insecticide TUs and community metrics for (a) SPEAR_{pesticide} values of emergent vegetation samples in La Plata and Arrecifes with values averaged over two sampling events in 2011–2012, (b) SPEAR_{pesticide} values of benthos samples in La Plata and Arrecifes with values averaged over two sampling events in 2011–2012, (c) benthos samples in Arrecifes with values averaged over two sampling events in 2013–2014, (d) % crustacea values of emergent vegetation samples in La Plata and Arrecifes with values averaged over two sampling events in 2011–2012, (e) % crustacea values of benthos samples in La Plata and Arrecifes with values averaged over two sampling events in 2011–2012, and (f) % crustacea of benthos samples in Arrecifes with values averaged over two sampling events in 2013–2014.

Table 4
Averaged model results and relative importance of predictor variables. The symbol “–” indicates no significant correlation.

Period	Sampling matrix	Response metrics	Averaged models			Relative variable importance			
			Adj r^2	AICc	p-Value	Total TU	SRP	Chloride ^a	Depth
2011–2012	Benthos	SPEAR _{pesticides}	0.29–0.38	≤111.6	0.03	1.00	0.28	–	–
		% Crustacea	0.80	≤–2.4	≤0.0002	0.03	–	1.00	0.71
	Vegetation	SPEAR _{pesticides}	0.24–0.38	≤107.6	≤0.042	0.85	0.06	0.21	–
2013–2014	Benthos	% Crustacea	0.28–0.31	≤8.6	≤0.0499	0.57	–	0.57	–
		Averaged models			Relative variable importance				
			Adj r^2	AICc	p-Value	Total TU	SRP	Conductivity ^a	Depth
		SPEAR _{pesticides}	0.33–0.40	≤68.7	–	1.00	0.14	–	–
		% Crustacea ^b	–	–	–	–	–	–	–

^a Major ions were measured only in 2011–2012, and for this period chloride was found to have higher importance than conductivity in explaining variance in response metrics.

^b No models with p-value < 0.5 were found.

4. Discussion

The results of the present study demonstrate that insecticide concentrations in streams of the Argentina Pampas are correlated with changes to aquatic invertebrate community composition, and that these changes are not highly influenced by other variables included in the study. To our knowledge, this is the first field study that has demonstrated such effects in soy production regions. In intensive soy production regions in the midwest region of the United States, as well as in Brazil and Argentina, many studies have reported frequent detections of insecticides, as well as toxicity to specific sensitive species (Casara et al., 2012; Di Marzio et al., 2010; Ding et al., 2010; Hladik and Kuivila, 2012; Jergentz et al., 2004a, 2004b; Laabs et al., 2002; Mugni et al., 2011). However, none of these studies investigated effects on entire invertebrate communities over a gradient of pesticide concentrations.

We found that the SPEAR_{pesticides} index was a better metric of pesticide-related impacts to invertebrate communities compared to more general metrics such as taxa richness and diversity, as well as to relative abundance metrics for sensitive invertebrate groups. This is not surprising, because the SPEAR_{pesticides} index was developed specifically to evaluate impacts of pesticides, and is based partly on physiological sensitivity to pesticides. Moreover, the ability to parameterize the SPEAR_{pesticides} index by adjusting trait thresholds allows it to be adapted to various regions and habitats with different invertebrate community structures. An index such as SPEAR that allows for parameterization is intrinsically expected to perform better than indices that cannot be parameterized (such as relative abundance metrics). Because we averaged the optimized values across several watersheds and over multiple years, we consider the SPEAR threshold values to be optimized for streams throughout the Pampas region of Argentina during the summer season. This was confirmed by the strong performance of the SPEAR index for all four combined data sets in our study.

Studies using the SPEAR_{pesticides} index in agricultural regions of other countries have found similar results to the present study, usually with stronger correlations (Liess and Von der Ohe, 2005; Münze et al., 2015; Orlinkiy et al., 2015; Schäfer et al., 2012; Schäfer et al., 2011; Schäfer et al., 2007). Schäfer et al. (2012) reported that eight studies in Europe, Siberia and Australia found very good correlations between SPEAR_{pesticides} and pesticide TU values ($0.62 < r^2 < 0.68$). These studies used life history trait databases based on taxa from the respective regions. In Argentina and in South America in general, such taxa trait data are currently lacking. Although the SPEAR_{pesticides} index was developed in Europe, it performed well in the Argentine Pampas with only minor modifications, and would likely improve as more data are obtained on the traits of South American taxa such as generation time and migration rates. The SPEAR analysis conducted in the present study was based on a taxonomic resolution of family level or higher, and would likely improve if adequate data were available to conduct the analysis at a lower taxonomic level. Although it has previously been found that the SPEAR index performs similar at family and genus level, this may

be primarily the result of a lack of sensitivity data at the genus level (Beketov et al., 2009). Within each family or order, a small number of genera tend to be used as standard test organisms, and relative sensitivity values for these standard test species may not be representative of closely related taxa. This is supported by a recent study that tested sensitivity to pyrethroids in 34 stream invertebrate species, and found that LC50 values could vary by a factor of over 1000 even within the same family (Wiberg-Larsen et al., 2016). The authors of this study concluded that certain traits such as smaller body size and preference for coarse substrate indicated higher pyrethroid sensitivity.

While the relative sensitivity values in the SPEAR_{pesticides} index are based on all toxicity data reported globally (Von der Ohe and Liess, 2004), the vast majority of aquatic toxicity tests were performed on species from Europe and North America (Hagen and Douglas, 2014). Kwok et al. (2007) found that tropical species may be more sensitive than temperate species to pesticides, while temperate species are likely to be more sensitive to metals. The lack of biological trait data for local taxa may be one possible contributor to lower performance of the SPEAR_{pesticides} index in Argentina compared to Europe and Australia, where r^2 values typically ranged from about 0.6 to 0.7 (Schäfer et al., 2011b).

Most previous SPEAR studies used lower taxonomic levels than the present study which was based on family level, but it has been demonstrated that the explanatory power of the family level SPEAR_{pesticides} index is not significantly lower than the species level SPEAR_{pesticides} index (Beketov et al., 2009). Therefore, it is not likely that the taxonomic resolution level is responsible for the somewhat lower correlations found in the Argentine Pampas.

Although most previous studies applying the SPEAR_{pesticides} index have been based on pesticide concentrations measured in stream water, Schäfer et al. (2011) found that pesticide concentrations in sediments were more strongly correlated with SPEAR_{pesticides} values in Australian streams. This was surprising given that more compounds and approximately twice the number of total detections above the quantitation limit was found in grab water samples compared to sediment samples. However, the higher detection frequency in water was likely because of more hydrophilic compounds detected in water, and lower quantitation limits in analysis of water samples. In addition, the average toxicity of pesticides in water samples was lower than that for sediment samples (Schäfer et al., 2011b). In the present study, the most commonly used insecticides are more likely to partition to sediment than to water, and to remain in sediments at elevated concentrations for at least several weeks after peak water concentrations (Hunt et al., 2016). Therefore, insecticide concentrations in sediment are expected to be a good indicator of invertebrate exposure to insecticides for the present study.

This was the first study using the SPEAR_{pesticides} index to evaluate effects of pesticides on invertebrate samples collected from aquatic vegetation, and its performance was similar to that for benthic invertebrate communities. The data set for vegetation-associated invertebrate communities in the present study was limited, and additional studies

would be needed to optimize the SPEAR_{pesticides} index specifically for this type of sample. However, in the present study the taxa composition (relative abundance of major orders) for vegetation-associated communities was similar to that of benthic communities (Table 3), so it is reasonable to expect that the thresholds would be similar for both communities.

The results of the present study are consistent with previous studies that have shown the SPEAR_{pesticides} index to not be highly influenced by non-pesticide variables (Beketov and Liess, 2008; Liess et al., 2008a, 2008b). Beketov and Liess (2008) investigated factors that affect SPEAR_{organics}, which uses the same taxa relative sensitivity values as SPEAR_{pesticides}, but does not consider the additional three traits that are included in SPEAR_{pesticides}. They showed that SPEAR_{organics} is independent of stream longitudinal gradient, including factors such as altitude, temperature, stream width, nutrients, and velocity. In contrast, metrics such as EPT richness and Shannon diversity were highly correlated with longitudinal factors (Beketov and Liess, 2008). In a study of 24 Australian stream sites, Schäfer et al. (2011) found that pesticide contamination was the only measured variable explaining variation in SPEAR_{pesticides}, with other measured variables including many water quality, habitat and landscape variables. Although existing studies have not demonstrated a large influence of non-pesticide variables on the SPEAR_{pesticides} index, most of these studies were limited by a small sample size which in turn limited the types of statistical analysis that could be conducted and the number of explanatory variables included. Therefore, parameters that tend to be correlated with pesticide concentrations cannot be ruled out as influencing the SPEAR_{pesticides} index.

Some previous studies did identify specific non-pesticide variables that can affect performance of the SPEAR_{pesticides} index. For example, Rasmussen et al. (2011) investigated 212 streams in Denmark, where they found that SPEAR_{pesticides} values were negatively correlated with ortho-phosphate concentrations, biochemical oxygen demand (BOD) and macrophyte coverage. The present study also found that phosphorus (SRP) helped to explain variance in SPEAR_{pesticides}, but was much less important than insecticide TUs. While the present study did not find macrophyte coverage to be important, we measured this variable only in the 2013–2014 data group. We selected only sites that consistently had high dissolved oxygen levels, so BOD is unlikely to be a confounding factor. Bunzel et al. (2014) analyzed data from 663 stream sites in central Germany and reported that SPEAR_{pesticides} values decreased with increasing hydromorphological degradation, especially in sites with concrete channels or straight artificial stream beds. In the present study we selected sites that were not highly channelized, so this is not likely to be an important confounding factor in our analysis.

Another factor that could affect performance of the SPEAR index but was not quantified in this study is the effect of scour during heavy runoff events, which could cause drift of benthic macroinvertebrates. During our study, heavy rainfall and high flow events sometimes occurred within the two week period prior two sample collection. However, because we analyzed each data set for each sampling event independently, and all samples for each data set were located in close proximity, all samples within each data set were subject to a similar level of antecedent flow, thus all samples within each data set would be expected to be similarly biased. Therefore, we do not expect antecedent flow events to have a large influence on the SPEAR index. In addition, an investigation where hydrodynamic stress as well as pesticide stress was investigated found that population dynamics were only influenced by runoff events that were associated with pesticide stress in addition to hydrodynamic stress (Liess and Schulz, 1999).

Crustaceans, especially amphipods in the genus *Hyalella*, comprised a large part of the stream invertebrate communities in the Argentine Pampas (Table S3), and also played an important role as sensitive taxa in performance of the SPEAR_{pesticides} index in this region. This is in contrast to the role of amphipods in the SPEAR_{pesticides} index in Europe, where the species *Gammarus pulex* is abundant. Although *G. pulex* has high physiological sensitivity to pesticides, this species can migrate

very fast and thus is assigned a SPEAR_{pesticides} score of 0 (considered not at risk for pesticides) (Liess and Von der Ohe, 2005). We were unable to find data on the migration rate of any *Hyalella* species, but the decrease in relative abundance of amphipods that corresponded with an increase in insecticide toxic units demonstrates that *Hyalella* should be considered to have overall sensitivity to insecticides. Freshwater amphipods of both the Hyalellidae and Gammaridae families are traditionally considered to be shredders of leaf litter, although recent studies have shown plasticity in their trophic levels and functional roles (Acosta and Prat, 2011). Although *Hyalella* usually was the most abundant crustacean in most samples collected in the present study, at some sites the decapod family Palaemonidae was the only crustacean present, sometimes with very high relative abundance. As shredders, amphipods play an important role in leaf litter decomposition and large reductions in their abundance may impact ecosystem functioning.

The influence of higher conductivity and chloride content on crustacean abundance is supported by previous studies, although data are somewhat limited (Kefford et al., 2016; Soucek and Kennedy, 2005). Crustaceans and other freshwater organisms are known to osmoregulate hypertonically by active transport of ions into the hemolymph, and chloride is the principal inorganic anion in the hemolymph of crustaceans (Soucek and Kennedy, 2005). Low chloride concentrations may limit distribution of some euryhaline amphipods such as *Hyalella* spp., and chlorides have been found to have a protective effect on sulfate toxicity to *H. azteca* (Soucek and Kennedy, 2005). Although increased conductivity of surface water bodies has been shown to result from intensive agriculture in some regions (Kefford et al., 2016), there is little or no evidence of this conductivity effect in the regions we studied, where the conductivity levels in streams are related to regional geology (García, 2016). In fact, we found that the conductivity levels were often higher and more variable in the streams located in the less intensively farmed region of La Plata (Table S2).

Although it may seem obvious that we would find that crustaceans are useful indicator organisms for pesticides because they are known to have high physiological sensitivity to pesticides, this is not necessarily true. In the United States some experts have questioned the appropriateness of using a very sensitive test organism like *Hyalella*, partly because *Hyalella* amphipods have been found in high abundance in some streams that also have high pesticide levels (Clark et al., 2015; Palmquist et al., 2011). As mentioned above, the common amphipod *G. pulex* has high physiological sensitivity to pesticides, but populations can recover very fast and is therefore not considered not at risk for pesticides (Liess and Von der Ohe, 2005). The findings of the present study show that at least in the case of Argentine Pampas streams, *Hyalella* amphipods can be a good indicator of pesticide impacts in field studies as well as in laboratory studies.

5. Conclusions

The present study established a correlation between insecticide TUs in stream sediments and changes in aquatic invertebrate communities of the Argentine Pampas. The SPEAR_{pesticides} index consistently showed a significant decrease with increasing insecticide TUs, across all data groups. For all data sets evaluated, insecticide TU was the most important variable in explaining variability in the SPEAR_{pesticides} index, indicating that it is relatively insensitive to non-pesticide stressors.

The SPEAR_{pesticides} index performed equally well for aquatic invertebrate communities associated with emergent vegetation as it did for benthic invertebrate communities. This was true even though the SPEAR_{pesticides} thresholds were optimized for benthic invertebrate communities. Although we consider the SPEAR threshold values to be optimized for streams in the Pampas region of Argentina based on the strong performance of the SPEAR index for all data sets in our study, the index can be further optimized as more environmental data become available in the region, and as trait values are refined based on studies of regional taxa. An index such as SPEAR that allows for parameterization

is intrinsically expected to perform better than indices that cannot be parameterized (such as relative abundance metrics). We consider this an advantage of the SPEAR index, because it allows us to detect community-level impacts when other indices do not, and because it can be adapted and applied to different regions.

The most dramatic effect in invertebrate communities was seen on the crustaceans, which are highly sensitive to most insecticides. Crustaceans, especially amphipods in the genus *Hyalella*, comprised a large part of the stream invertebrate communities in the Argentine Pampas, and also played an important role as sensitive taxa in performance of the SPEAR_{pesticides} index. As shredders, amphipods play an important role in leaf litter decomposition. Consequently, large reductions in their abundance may influence ecosystem functioning.

Acknowledgements

This study was supported by a grant from the Agencia Nacional de Promoción Científica y Tecnológica (Argentina – PICT 2010-0446). L. Hunt was supported primarily by fellowships from the National Science Foundation Graduate Research Fellowship Program and the Fulbright US Student Program. M. Solis provided invaluable support with field and laboratory work. J. Carter provided assistance with calculation of bioassessment metrics.

Appendix A. Supplementary data

Supplementary data to this article can be found online at <http://dx.doi.org/10.1016/j.scitotenv.2016.12.016>.

References

- Acosta, R., Prat, N., 2011. Trophic ecology of *Hyalella* sp. (Crustacea: Amphipoda) in a high Andes headwater river with travertine deposits. *Int. Rev. Hydrobiol.* 96 (3), 274–285.
- American Public Health Association (APHA), 2005. Standard methods for the examination of water and wastewater (20 ed.). Washington, DC: Am. Public Health Assoc.
- Barbour, M.T., Gerritsen, J., 1996. Subsampling of benthic samples: a defense of the fixed-count method. *J. North Am. Benthol. Soc.* 15:386. <http://dx.doi.org/10.2307/1467285>.
- Barton, K., 2015. Package “MuMIn.” Version 1. p. 18.
- Beketov, M.A., Liess, M., 2008. An indicator for effects of organic toxicants on lotic invertebrate communities: independence of confounding environmental factors over an extensive river continuum. *Environ. Pollut.* 156:980–987. <http://dx.doi.org/10.1016/j.envpol.2008.05.005>.
- Beketov, M.A., Foit, K., Schäfer, R.B., Schriever, C.A., Sacchi, A., Capri, E., Biggs, J., Wells, C., Liess, M., 2009. SPEAR indicates pesticide effects in streams – comparative use of species- and family-level biomonitoring data. *Environ. Pollut.* 157:1841–1848. <http://dx.doi.org/10.1016/j.envpol.2009.01.021>.
- Bunzel, K., Liess, M., Kattwinkel, M., 2014. Landscape parameters driving aquatic pesticide exposure and effects. *Environ. Pollut.* 186:90–97. <http://dx.doi.org/10.1016/j.envpol.2013.11.021>.
- Cade, B.S., 2015. Model averaging and muddled multimodel inferences. *Ecology* 96, 2370–2382.
- Carter, J.L., Resh, V.H., 2013. Analytical Approaches Used in Stream Benthic Macroinvertebrate Biomonitoring Programs of State Agencies in the United States. United States Geological Survey Open-File Report 2013–1129.
- CASAFE, 2013. |. 416. <http://www.casafe.org/sobrelaindustria.htm> (Accessed on November 2013).
- Casara, K.P., Vecchiato, A.B., Lourencetti, C., Pinto, A.A., Dores, E.F., 2012. Environmental dynamics of pesticides in the drainage area of the São Lourenço River headwaters, Mato Grosso State, Brazil. *J. Braz. Chem. Soc.* 23, 1719–1731.
- Castanheira, E.C., Freire, F., 2013. Greenhouse gas assessment of soybean production: implications of land use change and different cultivation systems. *J. Clean. Prod.* 54: 49–60. <http://dx.doi.org/10.1016/j.jclepro.2013.05.026>.
- Chang, F.-H., Lawrence, J.E., Rios-Touma, B., Resh, V.H., 2014. Tolerance values of benthic macroinvertebrates for stream biomonitoring: assessment of assumptions underlying scoring systems worldwide. *Environ. Monit. Assess.* 186:2135–2149. <http://dx.doi.org/10.1007/s10661-013-3523-6>.
- Clark, S.L., 2015. Comparative sensitivity of field and laboratory populations of *Hyalella azteca* to the pyrethroid insecticides bifenthrin and cypermethrin. *Environ. Toxicol. Chem.* 34 (10), 2250–2262.
- Di Marzio, W.D., Sáenz, M.E., Alberdi, J.L., Fortunato, N., Cappello, V., Montivero, C., Ambriani, G., 2010. Environmental impact of insecticides applied on biotech soybean crops in relation to the distance from aquatic ecosystems. *Environ. Toxicol. Chem.* n/a–n/a. <http://dx.doi.org/10.1002/etc.246>.
- Ding, Y., Harwood, A.D., Foslund, H.M., Lydy, M.J., 2010. Distribution and toxicity of sediment-associated pesticides in urban and agricultural waterways from Illinois, USA. *Environ. Toxicol. Chem.* 29:149–157. <http://dx.doi.org/10.1002/etc.13>.
- Dominguez, E., Fernandez, H.R., 2009. Macroinvertebrados bentónicos. Sistemática y biología, Fundación Miguel Lillo, Tucumán, Argentina.
- García, V.J., 2016. Principales factores que influyen en la retención de nutrientes en arroyos pampeanos: factores bióticos y abióticos. University of Buenos Aires, Doctoral thesis.
- Grueber, C.E., Nakagawa, S., Laws, R.J., Jamieson, I.G., 2011. Multimodel inference in ecology and evolution: challenges and solutions: multimodel inference. *J. Evol. Biol.* 24: 699–711. <http://dx.doi.org/10.1111/j.1420-9101.2010.02210.x>.
- Hagen, T.G., Douglas, R.W., 2014. Comparative chemical sensitivity between marine Australian and Northern Hemisphere ecosystems: is an uncertainty factor warranted for water-quality-guideline setting?: Australian vs Northern Hemisphere ecosystem sensitivities. *Environ. Toxicol. Chem.* 33:1187–1192. <http://dx.doi.org/10.1002/etc.2548>.
- Helsel, D.R., 2012. Statistics for censored environmental data using Minitab and R. Wiley Series in Statistics in Practice, second ed. Wiley, Hoboken, N.J.
- Hladik, M.L., Kuivila, K.M., 2012. Pyrethroid insecticides in bed sediments from urban and agricultural streams across the United States. *J. Environ. Monit.* 14:1838. <http://dx.doi.org/10.1039/c2em10946h>.
- Hunt, L., Bonetto, C., Resh, V.H., Buss, D.F., Fanelli, S., Marrochi, N., Lydy, M.J., 2016. Insecticide concentrations in stream sediments of soy production regions of South America. *Sci. Total Environ.* 547:114–124. <http://dx.doi.org/10.1016/j.scitotenv.2015.12.140>.
- Jergentz, S., Mugni, H., Bonetto, C., Schulz, R., 2004a. Runoff-related endosulfan contamination and aquatic macroinvertebrate response in rural basins near Buenos Aires, Argentina. *Arch. Environ. Contam. Toxicol.* 46. <http://dx.doi.org/10.1007/s00244-003-2169-8>.
- Jergentz, S., Pessacq, P., Mugni, H., Bonetto, C., Schulz, R., 2004b. Linking in situ bioassays and population dynamics of macroinvertebrates to assess agricultural contamination in streams of the Argentine pampa. *Ecotoxicol. Environ. Saf.* 59:133–141. <http://dx.doi.org/10.1016/j.ecoenv.2004.06.007>.
- Jergentz, S., Mugni, H., Bonetto, C., Schulz, R., 2005. Assessment of insecticide contamination in runoff and stream water of small agricultural streams in the main soybean area of Argentina. *Chemosphere* 61:817–826. <http://dx.doi.org/10.1016/j.chemosphere.2005.04.036>.
- Kefford, B.J., et al., 2016. Salinized rivers: degraded systems or new habitats for salt-tolerant faunas? *Biol. Lett.* 12 (3), 20151072.
- Kwok, K.W., Leung, K.M., Lui, G.S., Chu, V.K., Lam, P.K., Morrill, D., Maltby, L., Brock, T., Van den Brink, P.J., Warne, M.S.J., others, 2007. Comparison of tropical and temperate freshwater animal species' acute sensitivities to chemicals: implications for deriving safe extrapolation factors. *Integr. Environ. Assess. Manag.* 3, 49–67.
- Laabs, V., Amelung, W., Pinto, A.A., Wantzen, M., da Silva, C.J., Zech, W., 2002. Pesticides in surface water, sediment, and rainfall of the northeastern Pantanal basin, Brazil. *J. Environ. Qual.* 31, 1636–1648.
- Liess, M., Schulz, R., 1999. Linking insecticide contamination and population response in an agricultural stream. *Environ. Toxicol. Chem.* 18, 1948–1955.
- Liess, M., Von der Ohe, P.C.D., 2005. Analyzing effects of pesticides on invertebrate communities in streams. *Environ. Toxicol. Chem.* 24, 954–965.
- Liess, M., Schäfer, R.B., Schriever, C.A., 2008. The footprint of pesticide stress in communities—species traits reveal community effects of toxicants. *Sci. Total Environ.* 406:484–490. <http://dx.doi.org/10.1016/j.scitotenv.2008.05.054>.
- Marino, D., Ronco, A., 2005. Cypermethrin and chlorpyrifos concentration levels in surface water bodies of the Pampa Ondulada, Argentina. *Bull. Environ. Contam. Toxicol.* 75: 820–826. <http://dx.doi.org/10.1007/s00128-005-0824-7>.
- Merritt, R.W., Cummins, K.W., 2008. An Introduction to the Aquatic Insects of North America. fourth ed. Kendall Hunt Publishing.
- Mugni, H., Ronco, A., Bonetto, C., 2011. Insecticide toxicity to *Hyalella curvispina* in runoff and stream water within a soybean farm (Buenos Aires, Argentina). *Ecotoxicol. Environ. Saf.* 74:350–354. <http://dx.doi.org/10.1016/j.ecoenv.2010.07.030>.
- Mugni, H., Paracampo, A., Marrochi, N., Bonetto, C., 2013. Acute toxicity of cypermethrin to the non target organism *Hyalella curvispina*. *Environ. Toxicol. Pharmacol.* 35: 88–92. <http://dx.doi.org/10.1016/j.etap.2012.11.008>.
- Mullen, K., Ardia, D., Gil, D.L., Windover, D., Cline, J., 2011. DEoptim: an R package for global optimization by differential evolution. *J. Stat. Softw.* 40, 1–26.
- Münze, R., Orlinskiy, P., Gunold, R., Paschke, A., Kaske, O., Beketov, M.A., Hundt, M., Bauer, C., Schüürmann, G., Möder, M., Liess, M., 2015. Pesticide impact on aquatic invertebrates identified with Chemcatcher® passive samplers and the SPEAR pesticides index. *Sci. Total Environ.* 537:69–80. <http://dx.doi.org/10.1016/j.scitotenv.2015.07.012>.
- Nordborg, M., Cederberg, C., Berndes, G., 2014. Modeling potential freshwater ecotoxicity impacts due to pesticide use in biofuel feedstock production: the cases of maize, rapeseed, salix, soybean, sugar cane, and wheat. *Environ. Sci. Technol.* 48: 11379–11388. <http://dx.doi.org/10.1021/es502497p>.
- Orlinskiy, P., Münze, R., Beketov, M., Gunold, R., Paschke, A., Knillmann, S., Liess, M., 2015. Forested headwaters mitigate pesticide effects on macroinvertebrate communities in streams: mechanisms and quantification. *Sci. Total Environ.* 524–525:115–123. <http://dx.doi.org/10.1016/j.scitotenv.2015.03.143>.
- Palmquist, K., et al., 2011. Environmental fate of pyrethroids in urban and suburban stream sediments and the appropriateness of *Hyalella azteca* model in determining ecological risk. *Integr. Environ. Assess. Manag.* 7 (3), 325–335.
- Pengue, W., 2000. Cultivos transgenicos >Hacia donde vamos? Lugar Editorial S. A., Buenos Aires
- Rasmussen, J.J., Baatrup-Pedersen, A., Larsen, S.E., Kronvang, B., 2011. Local physical habitat quality cloud the effect of predicted pesticide runoff from agricultural land in Danish streams. *J. Environ. Monit.* 13:943. <http://dx.doi.org/10.1039/c0em00745e>.
- Rubach, M.N., Baird, D.J., Van den Brink, P.J., 2010. A new method for ranking mode-specific sensitivity of freshwater arthropods to insecticides and its relationship to biological traits. *Environ. Toxicol. Chem.* 29:476–487. <http://dx.doi.org/10.1002/etc.55>.

- Schäfer, R.B., Caquet, T., Siimes, K., Mueller, R., Lagadic, L., Liess, M., 2007. Effects of pesticides on community structure and ecosystem functions in agricultural streams of three biogeographical regions in Europe. *Sci. Total Environ.* 382:272–285. <http://dx.doi.org/10.1016/j.scitotenv.2007.04.040>.
- Schäfer, R.B., Pettigrove, V., Rose, G., Allinson, G., Wightwick, A., von der Ohe, P.C., Shimeta, J., Kühne, R., Kefford, B.J., 2011. Effects of pesticides monitored with three sampling methods in 24 sites on macroinvertebrates and microorganisms. *Environ. Sci. Technol.* 45:1665–1672. <http://dx.doi.org/10.1021/es103227q>.
- Schäfer, R.B., von der Ohe, P.C., Rasmussen, J., Kefford, B.J., Beketov, M.A., Schulz, R., Liess, M., 2012. Thresholds for the effects of pesticides on invertebrate communities and leaf breakdown in stream ecosystems. *Environ. Sci. Technol.* 46:5134–5142. <http://dx.doi.org/10.1021/es2039882>.
- Soucek, D.J., Kennedy, A.J., 2005. Effects of hardness, chloride, and acclimation on the acute toxicity of sulfate to freshwater invertebrates. *Environ. Toxicol. Chem.* 24, 1204–1210.
- United States Department of Agriculture (USDA), 1996. Soil survey laboratory methods manual. Soil survey investigations report no. 42. Version 3.0. January.
- Von der Ohe, P.C., Liess, M., 2004. Relative sensitivity distribution of aquatic invertebrates to organic and metal compounds. *Environ. Toxicol. Chem.* 23, 150–156.
- Weston, D.P., Lydy, M.J., 2010. Urban and agricultural sources of pyrethroid insecticides to the Sacramento-San Joaquin Delta of California. *Environ. Sci. Technol.* 44 (5), 1833–1840.
- Weston, D.P., et al., 2013. Identifying the cause of sediment toxicity in agricultural sediments: the role of pyrethroids and nine seldom-measured hydrophobic pesticides. *Chemosphere* 90 (3), 958–964.
- Wiberg-Larsen, P., Graeber, D., Kristensen, E.A., Baattrup-Pedersen, A., Friberg, N., Rasmussen, J.J., 2016. Trait characteristics determine pyrethroid sensitivity in non-standard test species of freshwater macroinvertebrates: a reality check. *Environ. Sci. Technol.* 50:4971–4978. <http://dx.doi.org/10.1021/acs.est.6b00315>.
- You, J., Lydy, M.J., 2007. A solution for isomerization of pyrethroid insecticides in gas chromatography. *J. Chromatogr. A.* 1166, 181–190.
- You, J., Schuler, L.J., Lydy, M.J., 2004. Acute toxicity of sediment-sorbed endrin, methoxychlor, and endosulfan to *Hyaella azteca* and *Chironomus tentans*. *Bull. Environ. Contam. Toxicol.* 73. <http://dx.doi.org/10.1007/s00128-004-0451-8>.