

Figure S2A: Scheme of the cloning and checking procedures used to construct pIQ13 containing the A and B regions flanking *blr2382* and *blr2383*.

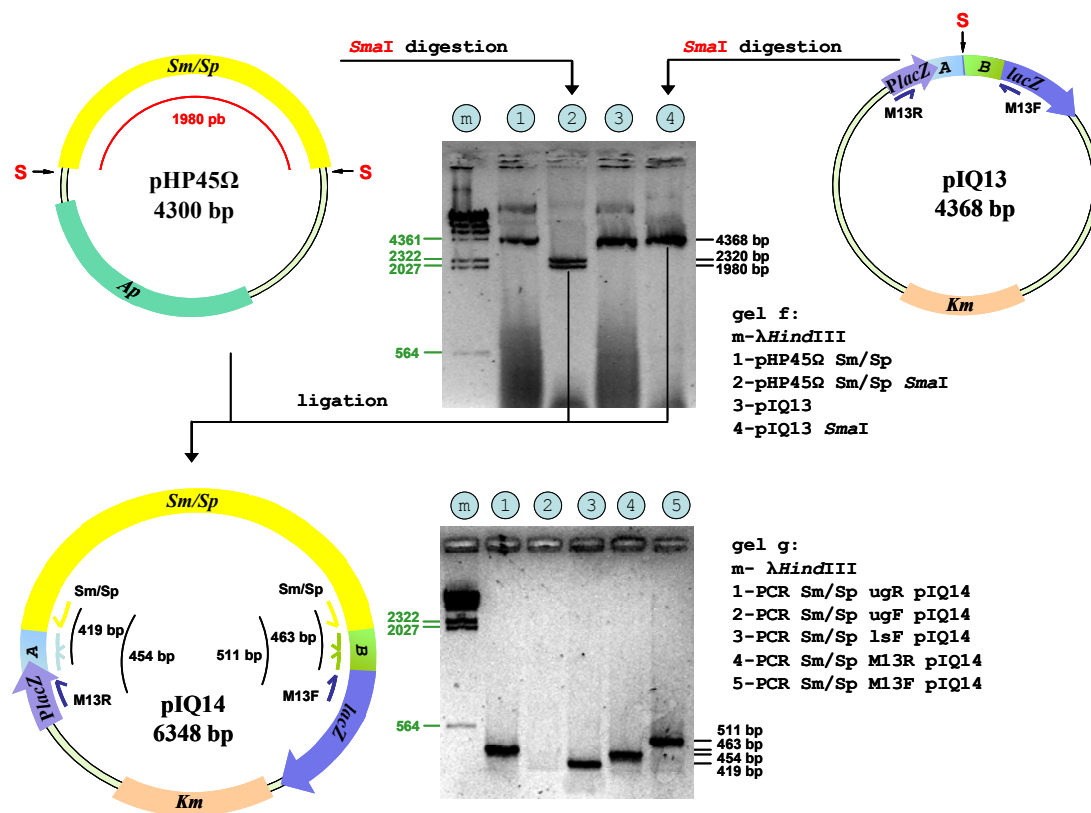


Figure S2B: Scheme of the cloning and checking procedures used to construct pIQ14 containing the Sm/Sp interposon between the A and B regions flanking *blr2382* and *blr 2383*.

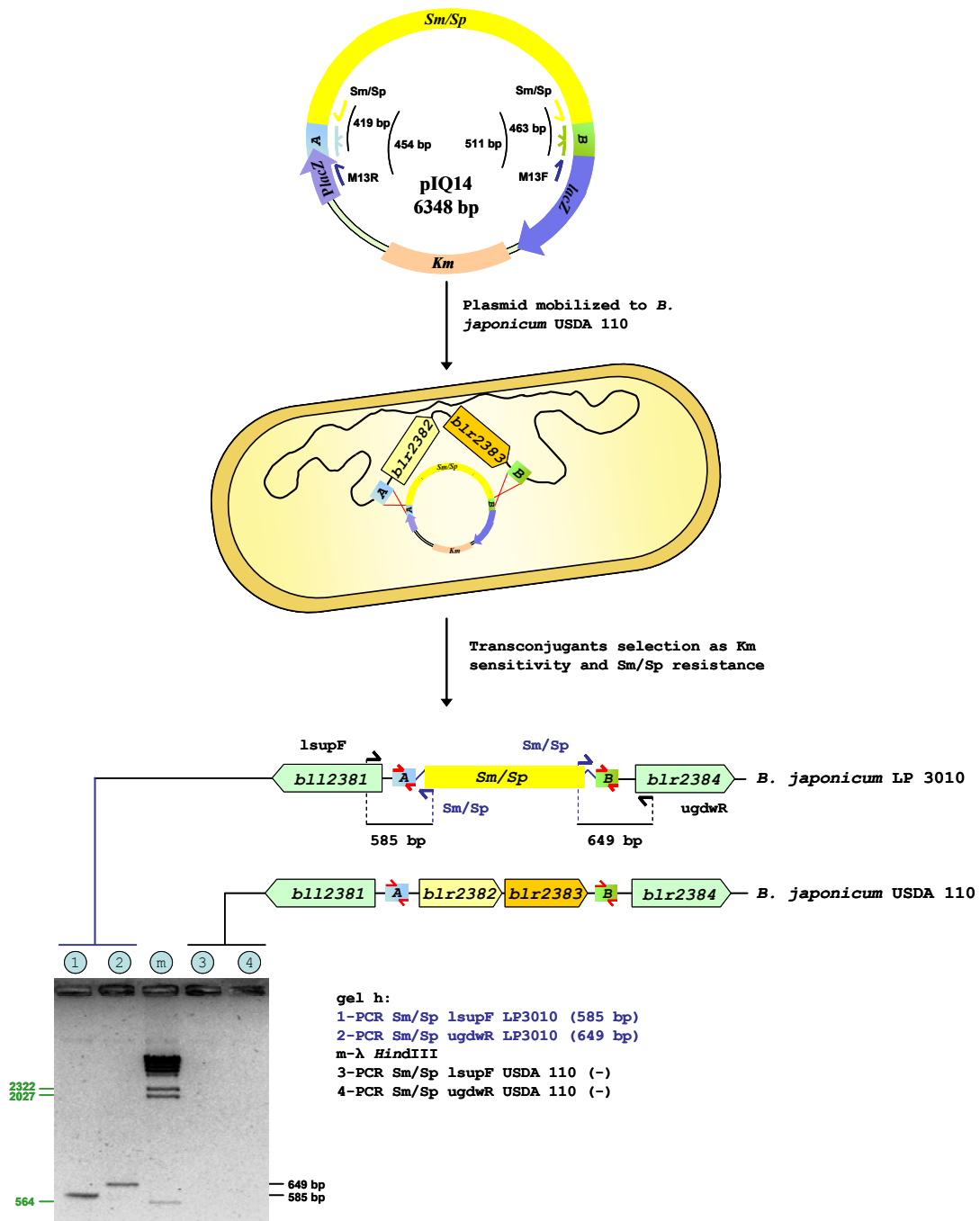


Figure S2C: Scheme of the cloning and checking procedures used to obtain the *B. japonicum* LP 3010 mutant.

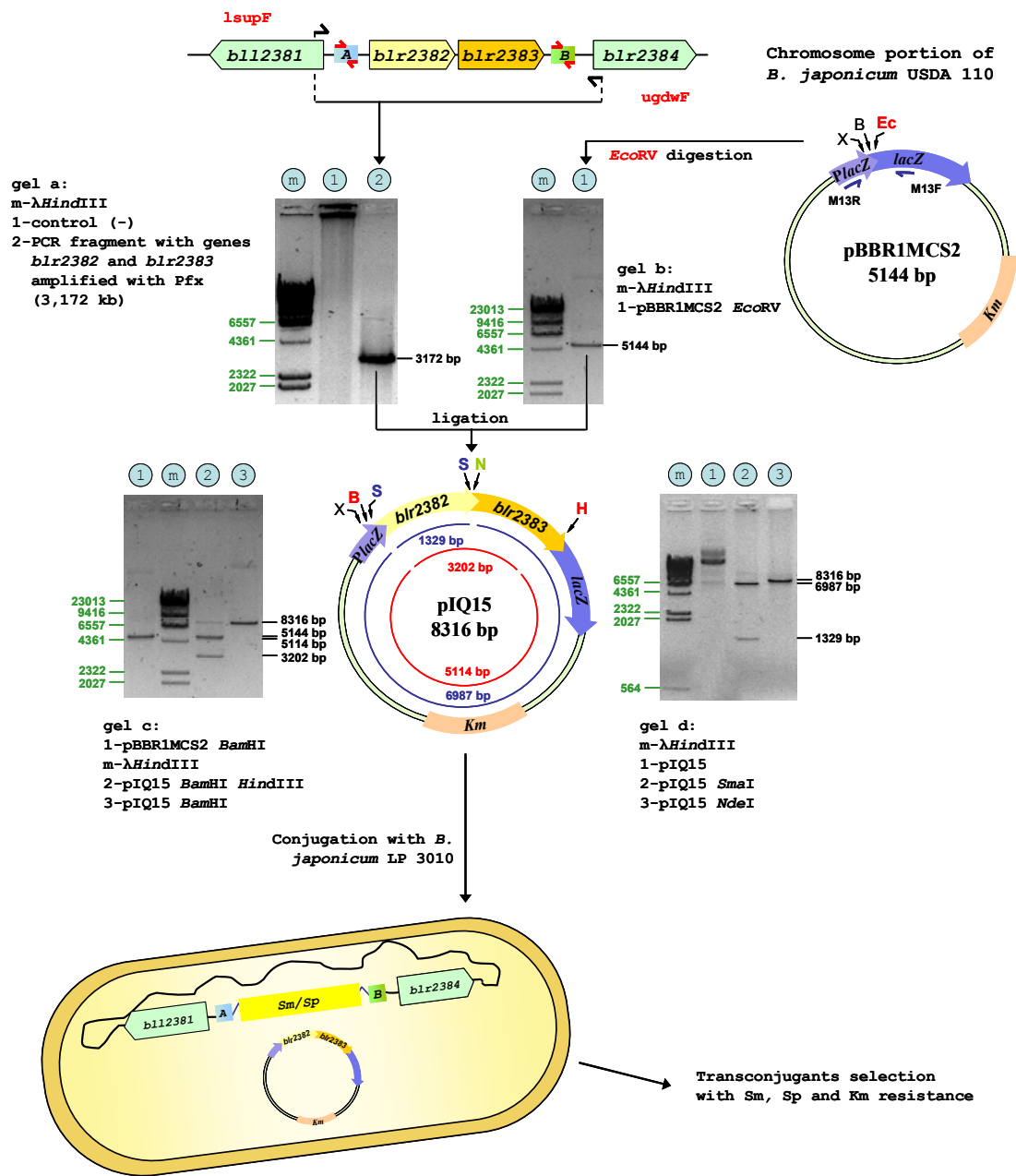


Figure S2D: Scheme of the cloning and checking procedures used to obtain pIQ15 and to complement the *B.japonicum* LP 3010 mutant.