

Figure S3A: Scheme of the cloning and checking procedures used to construct pIQ06 containing the *Km^r nptII* gene inserted into the *Pst*I site of *exoB* (*blr7578*).

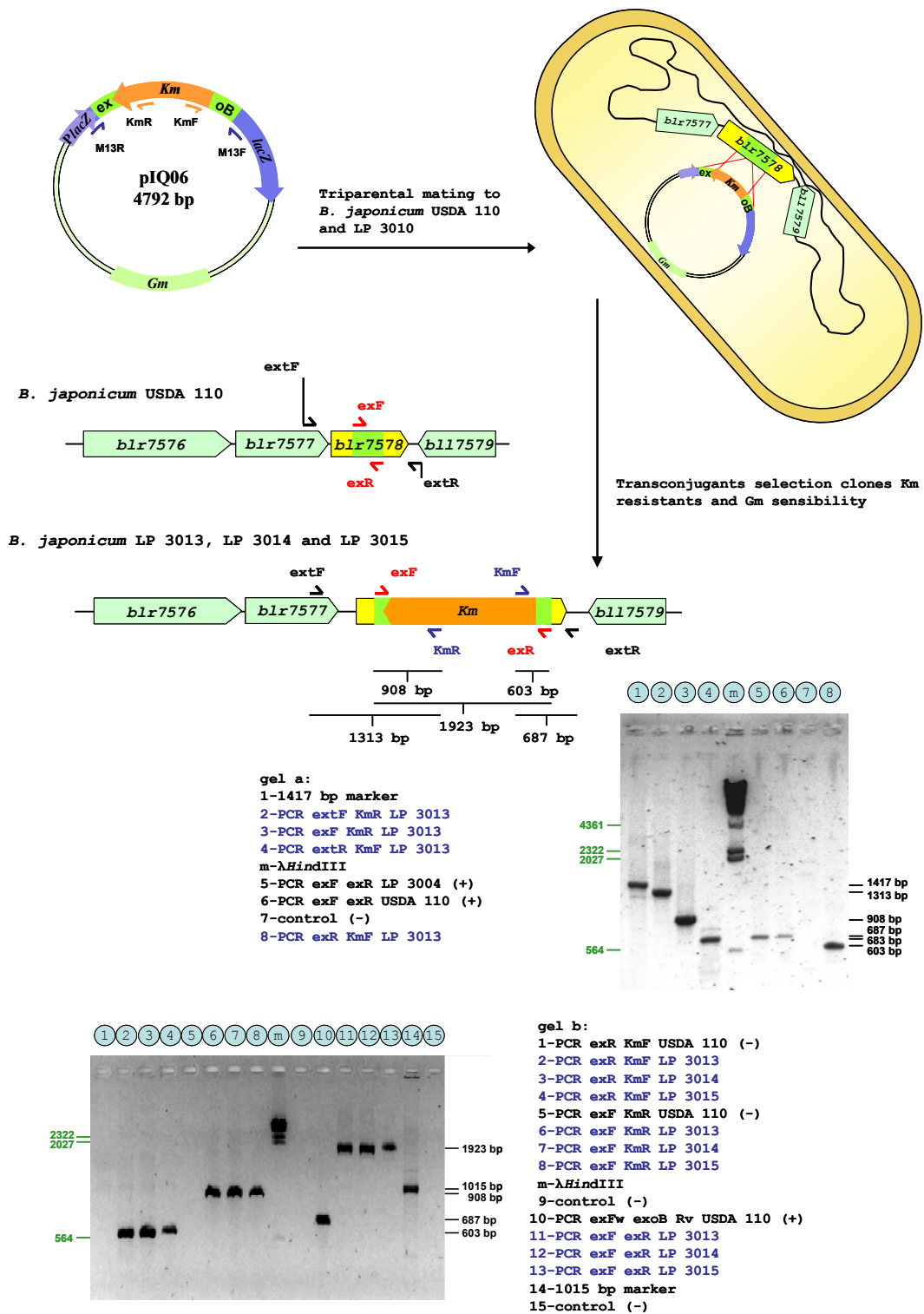


Figure S3B: Scheme of the cloning and checking procedures used to obtain the *B. japonicum* LP 3013 mutant. A similar procedure employing LP 3010 as recipient was used to obtain the LP 3017 double mutant.

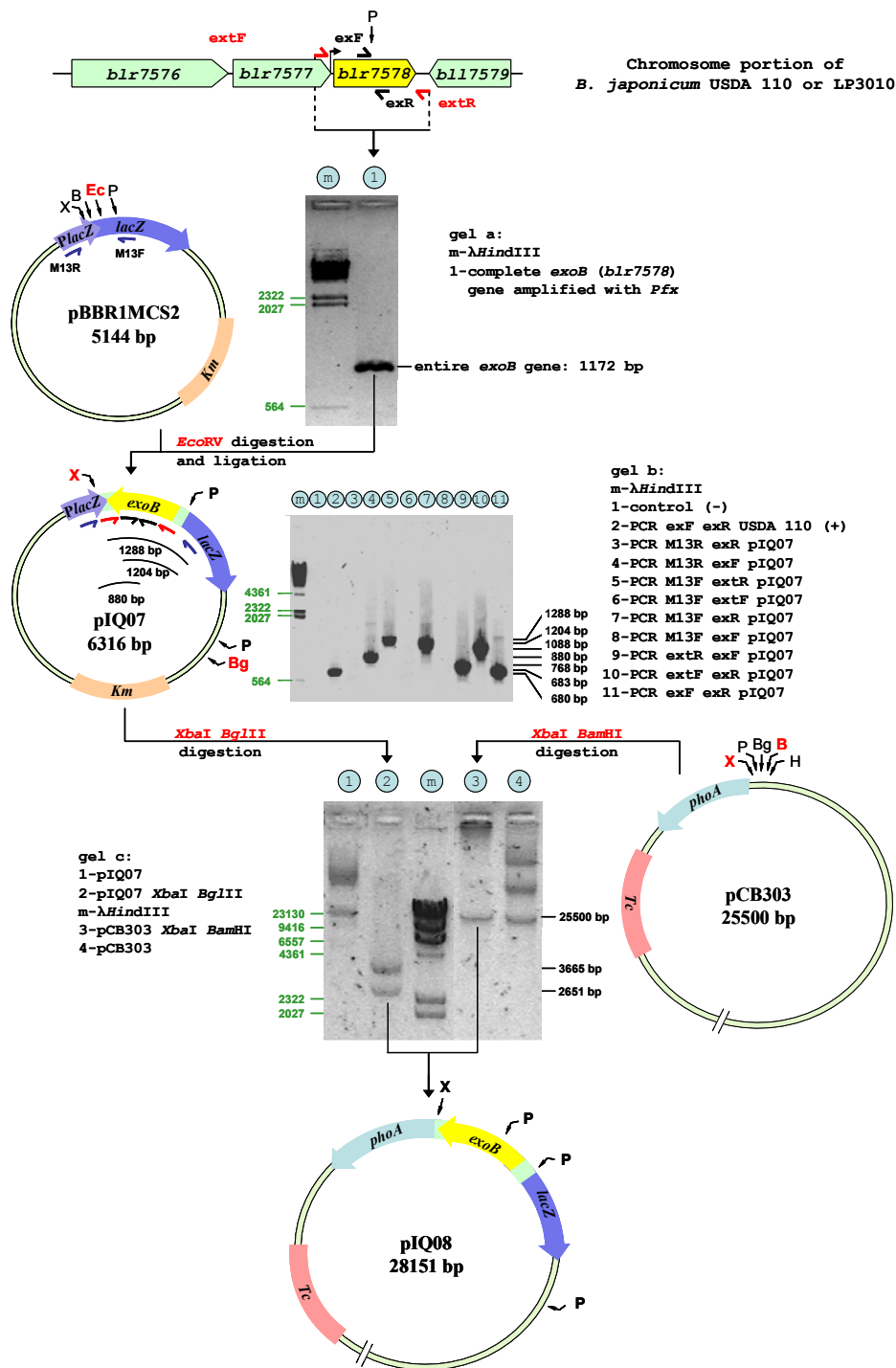


Figure S3C: Scheme of the cloning and checking procedures used to construct pIQ08 containing the entire *exoB* gene, with its own promoter.

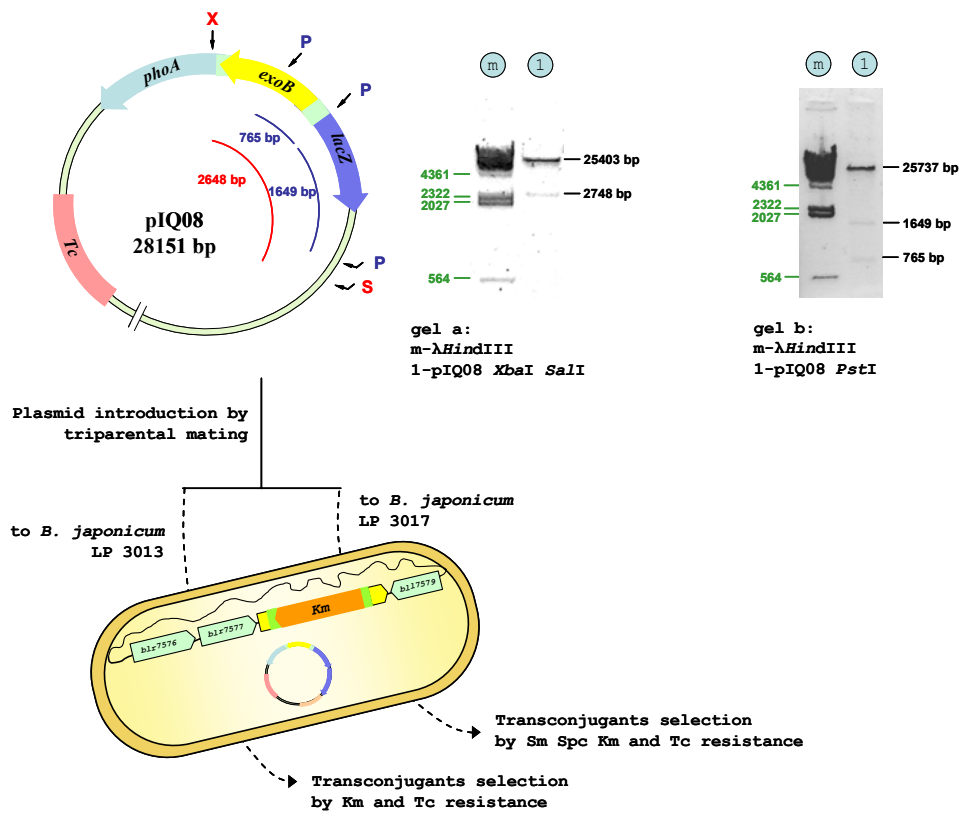


Figure S3D: Scheme of the cloning and checking procedures used to complement the *B.japonicum* LP 3013 and LP 3017 mutants.