

Supplementary Material

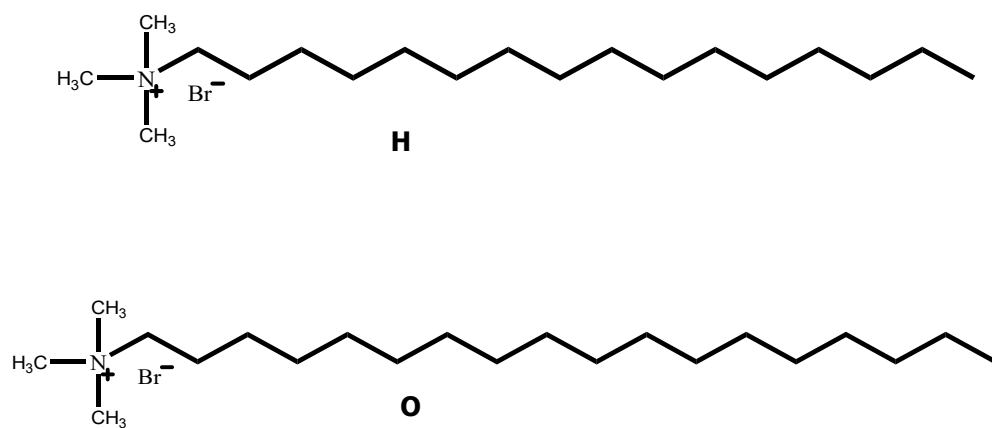


Figure S1. Molecular structures of the surfactants used.

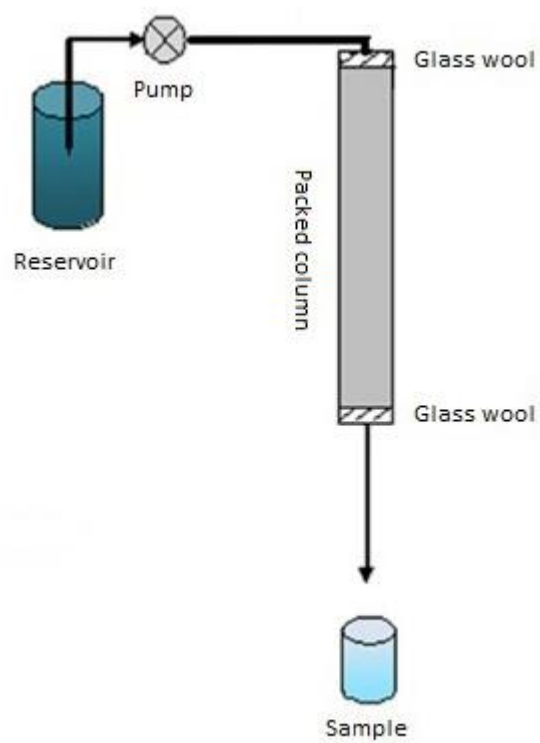


Figure S2. Column diagram of the system used to remove NO₃⁻ and BrO₃⁻.

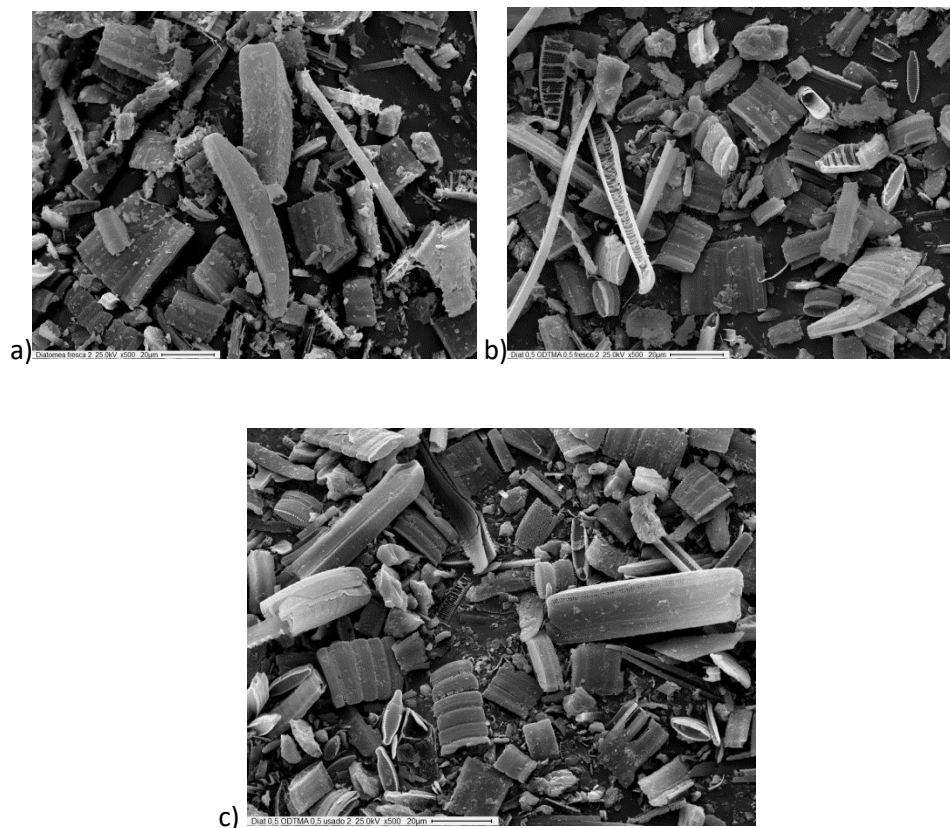


Figure S3. SEM images of (a) diatomaceous earth, (b) diatomaceous earth modified with ODTMA, (c) diatomaceous earth modified with ODTMA and with NO_3^- adsorbed.

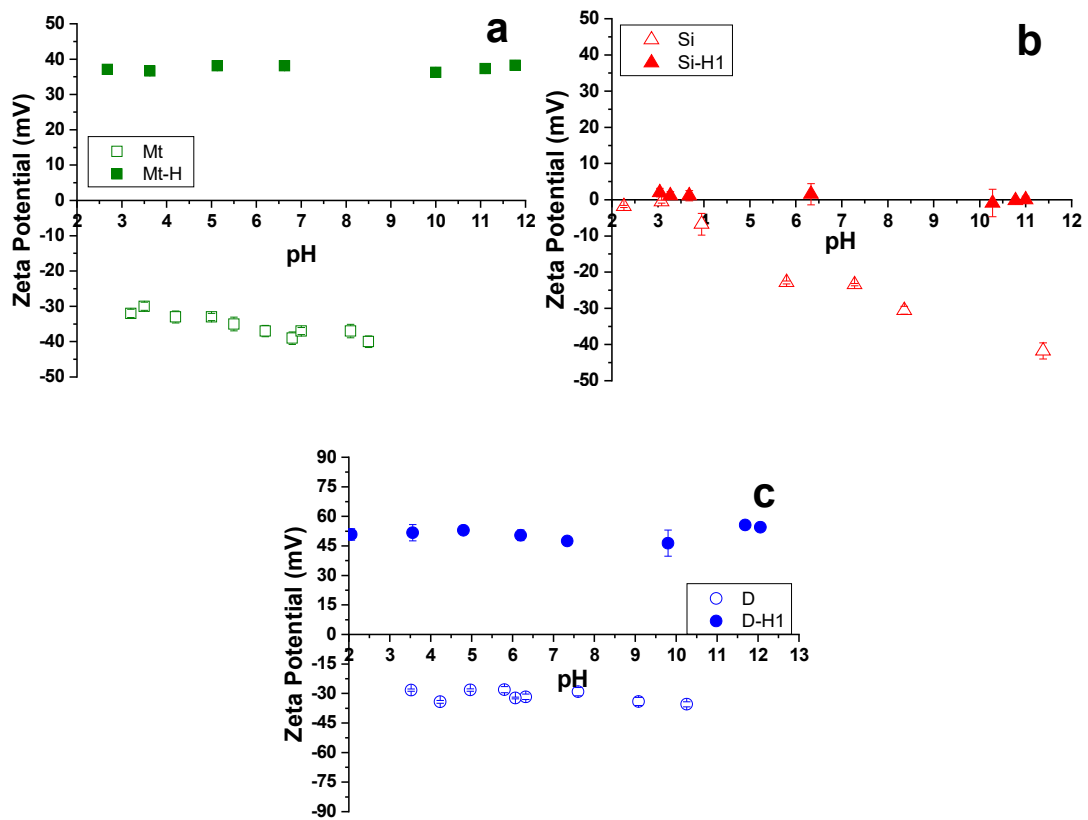


Figure S4. Zeta potential curves of indicated adsorbents.