

# Induction of Topographical Changes in Poly- $\epsilon$ -Caprolactone Scaffolds for Bone Tissue Engineering: Biocompatibility and Cytotoxicity Evaluations

Ana Laura Alfano and Juan Manuel Fernandez\*

*LIOMM (Laboratorio de Investigación en Osteopatías y Metabolismo Mineral) – Departamento de Ciencias Biológicas, Facultad de Ciencias Exactas, Universidad Nacional de La Plata, 1900 La Plata, Argentina*

Bone tissue engineering (BTE) uses principles from different fields, such as medicine, biochemistry and engineering, in order to restore or improve damaged tissue. Topographic changes of Poly- $\epsilon$ -caprolactone scaffolds (PCL) have been previously induced by exposure of the polymer to various concentrations of NaOH for different periods of time. However, lack of consistency between the treatment conditions used by different research groups has led to inconsistent results, with no clear conclusion arising regarding the benefits of these treatments. The aim of this study was to evaluate how different treatments (time-concentration) with NaOH could affect its biocompatibility for bone marrow stromal cells (BMSC) and its cytotoxicity towards RAW 264.7 macrophages of a PCL scaffold. We also analyzed the physicochemical and mechanical properties of the PCL films after different treatment. We have shown that treatment with for 2 hours with NaOH produced changes that affected the hydrophobicity and biocompatibility of the scaffold by increasing the proliferation and ALP activity in cells grown on them. Beside, 24 hours of treatment with NaOH produced significant decreased in mechanical properties resulting in a scaffold highly fragile and low biocompatibility compared to PCL. Therefore, treatment for 2 hours with NaOH can be used to increase the biocompatibility of PCL scaffolds.

**Keywords:** Cytotoxicity, Bone Tissue Engineering, Bone Marrow Stromal Cells, RAW 264.7 Macrophages, Poly-Epsilon-Caprolactone.

## 1. INTRODUCTION

Most available options to replace or restore extensively damaged bone tissue are not effective. Metals have low osteointegration, ceramics are brittle and bone grafts have several disadvantages including low availability due to insufficient donors, graft rejection and disease transmission. Furthermore, in view of overall population growth and increasing life expectancy, the burden of bone lesions will continue growing over the next years.<sup>1-4</sup>

Bone tissue engineering (BTE) uses concepts from different fields, such as medicine, biochemistry and engineering, in order to restore or improve damaged tissue.<sup>5</sup> Different polymer-based scaffolds have been developed for use in BTE.<sup>6-10</sup> These materials must meet many requirements for their application in BTE, such as biocompatibility, low toxicity, adequate mechanical properties and

biodegradation rates.<sup>11</sup> Although these requirements are greatly dependent on the chemical structure of the material, other properties may also be important. For example, three-dimensional and topographic changes could alter the behaviour of bone cells grown on a scaffold.

Many research groups<sup>12,13</sup> including ours<sup>14,15</sup> have demonstrated through *in vitro* studies that topographic changes of scaffolds can affect cellular activity. Poly- $\epsilon$ -caprolactone (PCL) is a polyester that has been widely studied for scaffold design, and is currently FDA-approved.

PCL-scaffolds have been previously induced by exposure of the polymer to various concentrations of NaOH for different periods of time topographic changes.<sup>16-19</sup> However, lack of consistency between the treatment conditions used by different research groups has led to inconsistent results, with no clear conclusion arising regarding the benefits of these treatments on the biocompatibility of the

\* Author to whom correspondence should be addressed.

scaffolds. Tan and Teoh<sup>16</sup> have postulated that the ester groups of PCL could be hydrolyzed by NaOH (Scheme 1) with generation of hydroxycaproic acid, thus modifying the scaffold's hydrophobicity.

The aim of this study was to evaluate how different treatments of a PCL-based scaffold could affect its biocompatibility for bone marrow stromal cells (BMSC) and its cytotoxicity towards RAW 264.7 macrophages. This cell line is highly sensitive to cytotoxic agents and responds by sharply increasing pro-inflammatory cytokines such as interleukin-1 (IL-1) and tumor necrosis factor-alpha (TNF- $\alpha$ ) as well as the production of nitric oxide (NO). Due to these features, macrophages in culture constitute an excellent model for cytotoxicity studies with various substances in biological systems.<sup>14, 20–23</sup> In addition, changes in hydrophobicity and mechanical properties were evaluated, and correlated with cellular studies.

## 2. MATERIALS AND METHODS

### 2.1. Preparation of PCL Films

Poly- $\epsilon$ -caprolactone (PCL) was purchased from Aldrich. The manufacturer reports its weight average molecular weight (Mw) and polydispersity index (PI) to be 65000 g · mol<sup>-1</sup> and 1.4, respectively. Films were prepared by the casting method. Briefly, PCL was dissolved in chloroform and casted into a glass Petri dish. The solvent was allowed to evaporate at room temperature and then the resulting films were dried under vacuum until constant weight.

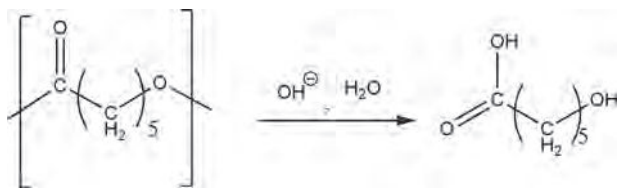
PCL films were then cut and treated with different concentrations of NaOH for various periods of time. Some membranes were submitted to 2N NaOH for either 1 or 2 hours (1H–2N and 2H–2N respectively). Other films were treated with 4N NaOH for 1, 2 or 24 hours (1H–4N, 2H–4N and 24H–4N respectively).

After these treatments, the different films were washed with water several times to ensure removal of all NaOH, and sterilized by UV exposure for 2 h.<sup>15, 20</sup>

### 2.2. Characterization of Scaffolds

#### 2.2.1. Molecular Weight and Polydispersity Index

To check if the different treatments affect the Mw and molecular weight distribution of the polymers, these were determined by size exclusion chromatography (SEC),



**Scheme 1.** Hydrolysis reaction of PCL with NaOH producing hydroxycaproic acid.

using an LKB-2249 instrument at 25 °C. A series of  $\mu$ -Styragel columns, pore sizes 10<sup>5</sup>, 10<sup>4</sup>, 500 and 100 Å, were used with chloroform as an eluent. The polymer concentration was 4–5 mg/ml and the flow rate was 0.5 ml/min. The polymer was detected at 5.75  $\mu$ m with a Miran 1 A infrared spectrophotometer detector and calibration was performed using poly(methyl methacrylate) as a standard.

#### 2.2.2. Topographic Changes

Possible changes in the topography of scaffolds as a consequence of their treatment with NaOH were evaluated using scanning electron microscopy (SEM; Phillips 505, The Netherlands), with an accelerating voltage of 20 kV. The images were analysed by Soft Imaging System ADDAII.

#### 2.2.3. Water Contact Angle

Water contact angle measurements of the films were carried out as described previously.<sup>7</sup> All tests were performed on the air-facing surface of samples. For each sample, six measurements were performed on different points in order to calculate the mean static contact angle.

#### 2.2.4. Elastic Modulus

The elastic modulus of each sample was evaluated at room temperature using a universal testing machine (Digimess TC500) equipped with force load cells of 50N capacity ("Interface" of Arizona, USA). The dog bone-shaped specimens (50 × 18 mm<sup>2</sup>) were tested at a rate of 5 mm/min until breaking point.<sup>15</sup> Elastic modulus was calculated from tensile stress–strain curves.

### 2.3. Biocompatibility Studies with Bone Marrow Stromal Cells (BMSC)

BMSC were obtained from rats as described previously.<sup>24</sup> These cells are characterized by their ability to differentiate into various phenotypes, such as osteoblasts, adipocytes or chondrocytes, given the right stimuli.<sup>20, 24</sup> Briefly, young male Wistar rats were sacrificed under anesthesia by rapid neck dislocation. BMSC were collected by flushing the dissected femoral and tibial diaphysis medullary canal with DMEM (Invitrogen, Buenos Aires, Argentina) under sterile conditions. The resulting suspension was seeded in a 25 cm<sup>2</sup> tissue culture flask. Adhering cells were grown in DMEM supplemented with 5% (v/v) FBS and antibiotics (100 U/ml penicillin and 100 g/ml streptomycin) in a humidified atmosphere of 95% air and 5% CO<sub>2</sub>. For the experiments, polymeric films were cut to size and placed inside wells of a 24-well plate. BMSC were resuspended and replated on each film slice at a density of 5 × 10<sup>4</sup> cells/well, and cultured in 10% FBS–DMEM at 37 °C. After cells reached confluence, they were induced to differentiate into osteoblasts using an osteogenic medium (DMEM–10% FBS containing 25 mg/mL ascorbic acid and 5 mM

sodium-glycerol-phosphate), which was changed twice a week. Osteoblastic differentiation was evaluated by measuring alkaline phosphatase activity (ALP). After 14 and 21 days of osteogenic differentiation, cell monolayers were washed with phosphate-buffered saline (PBS) and the total cell extract was obtained with 200 L 0.1% Triton-X100. A 100 L aliquot of the extract was used to evaluate ALP by hydrolysis of *p*-nitrophenylphosphate (*p*-NPP) into *p*-nitrophenol (*p*-NP) at 37 °C for 1 hour. The absorbance of *p*-NP was recorded at 405 nm.<sup>25</sup> Aliquots of each cell extract were used for protein determination by Bradford's technique.<sup>26</sup>

Transcription factor Runx-2 expression by western blot analysis was studied. BMSC were grown onto scaffolds in DMEM–10% FBS and then differentiated into osteoblasts as described above. After 21 days in osteogenic medium, cells were lysed in Laemmli's buffer.<sup>15</sup> These lysates were heated to 100 °C for 3 min, and 30 µg protein subjected to 12% SDS–PAGE. The separated proteins were then transferred to PVDF membranes. After washing and blocking, the membranes were incubated overnight at 4 °C with an antibody directed against Cbfa-1/Runx-2 (Santa Cruz Biotechnology, Santa Cruz, CA, USA) for evaluation of osteoblastogenesis.<sup>15,27</sup> In order to normalize the results, all blots were stripped and reprobed with an anti-β-actin antibody (Sigma, St.Louis, MO, USA). Blots were developed by an enhanced chemiluminescence method. The intensity of the specific bands was quantified by densitometry after scanning of the photographic film. Images were analysed using the gels plugin of MBF\_Image J (<http://www.macbiophotonics.ca>).

Alternatively, growth of BMSC on the scaffolds was estimated using a colorimetric tetrazolium assay. This assay measures the reduction of the tetrazolium salt 3-(4,5-dimethylthiazol-2-yl)-2,5-diphenyl tetrazolium bromide (MTT) to formazan by intact mitochondria in living cells. Thus, absorbance change is directly proportional to the number of viable cells.<sup>20</sup> For this assay,  $3 \times 10^4$  BMSC were plated in a 48-multiwell plate (with a polymer film placed in each well) and cultured for 2, 24, 96 and 168 hours in 10% FBS–DMEM at 37 °C. The medium was removed, cells were washed with PBS and fresh medium containing the MTT reagent (Sigma, USA) at a final concentration of 1 mg/mL was added. After a 3-hour incubation each film was removed, placed in a new 48-multiwell plate and washed again with PBS. Color was developed by addition of 200 L dimethylsulfoxide (DMSO) (Merck, Argentina) and mixing in a plate shaker for 20 minutes, after which absorbance was measured at 540 nm.<sup>20</sup>

In order to evaluate the morphology and cellular interactions of BMSC growing on different scaffolds, we carried out immunofluorescent staining of the actin cytoskeleton and the nucleus. Briefly, BMSC were grown on the polymeric films for 5 days, washed with PBS and fixed with 4% *p*-formaldehyde for 10 min. Cell membranes were

then permeabilized with cold ethanol. After blocking with 10%FBS for 2 hours, 1:100 Alexa fluor dye in PBS was added for 2 hours (Molecular Probe, Invitrogen, USA) to stain actin filaments. Films were then placed on slides, propidium iodide added in order to stain nuclei, and observed with a fluorescence microscope.

## 2.4. Cytotoxicity Studies with RAW 264.7 Macrophages

Murine macrophage RAW 264.7 cells were grown in DMEM supplemented with 5% (v/v) FBS and antibiotics (100 U/ml penicillin and 100 g/ml streptomycin) in a humidified atmosphere of 95% air and 5% CO<sub>2</sub>. For the experiments, polymeric films were cut to size, inserted in a 24-well plate and macrophages plated on them.

Nitric oxide (NO) production was assessed using Griess' reaction<sup>20,27–29</sup> (using sulfanilic acid as the diazotizing agent and *N*-1-naphthylethylene diamine as the coupling agent). The stable end-product of NO and nitrite released into the culture medium by RAW 264.7 cells was measured after 72, 96 and 168 hours of culture. Briefly, 400 µl samples of conditioned media or nitrite standards (0–100 nM) were mixed with 400 µl of Griess' reagent (1% sulfanilamide and 0.1% naphthylethylene-diamine in 5% phosphoric acid) and absorbance was measured at 530 nm against a blank prepared with non-conditioned culture medium.

The pro-inflammatory cytokines tumor necrosis factor alpha (TNF-α) and interleukin-1 (IL-1) released into the culture medium by RAW 264.7 cells were evaluated at 72, 96 and 168 hours by ELISA kits (Mouse IL-1β ELISA Set, BD Biosciences OptEIA™ and TNF-α kits Mouse ELISA Set, BD Biosciences OptEIA™) following the manufacturer's instructions, as we have previously described<sup>14,20</sup> using a calibration curve from 2 to 240 pg/ml.

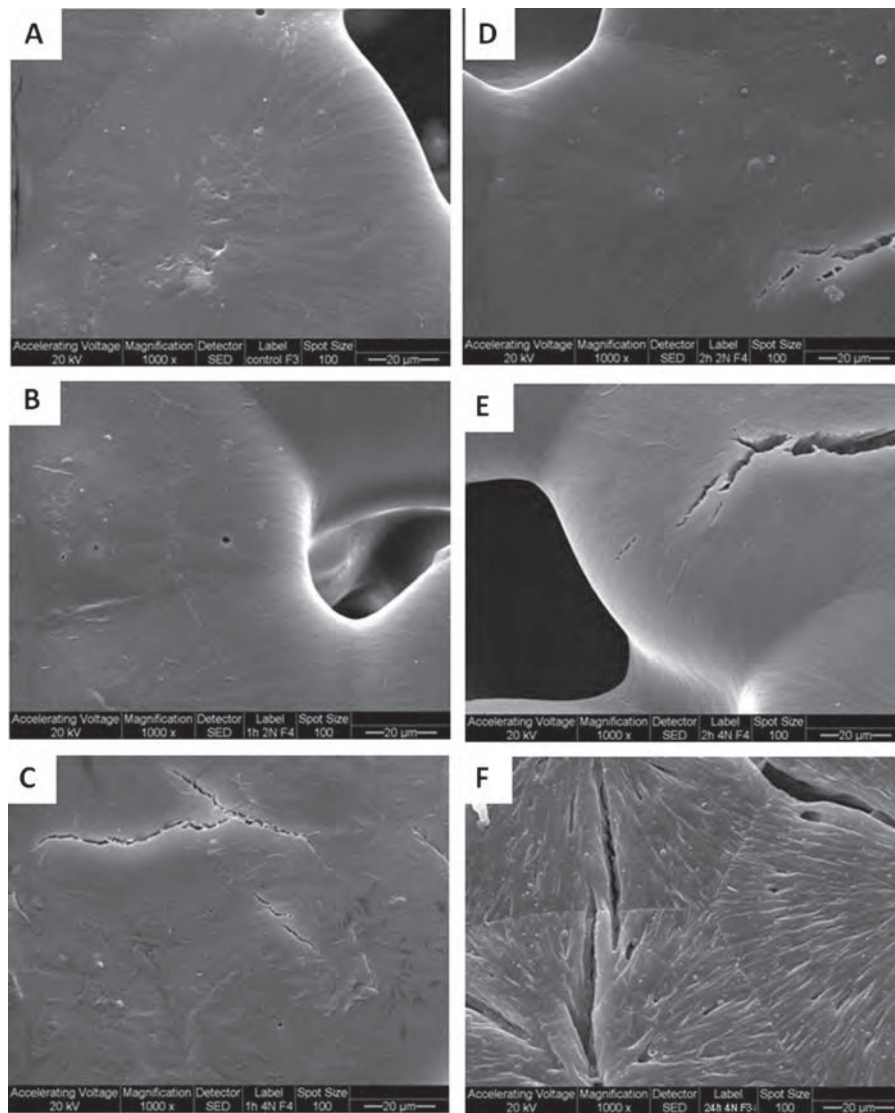
For NO and pro-inflammatory cytokine production, RAW 264.7 cells were also plated on standard culture tissue dishes with or without lipopolysaccharide (LPS, 0.1 g/ml) as positive and negative controls, respectively.

## 2.5. Statistical Analysis

Student's *t*-test was used for comparisons between control and experimental groups. All results are expressed as mean ± S.E.M. and represent at least three different experiments performed in triplicate.

## 3. RESULTS AND DISCUSSION

To obtain conclusive results, in the present study we prepared films of PCL and treated them with different concentrations of NaOH (2 and 4N) for either 1 or 2 hours. In addition, we treated PCL films with 4N NaOH for a longer period (24 hours). Figures 1(A)–(F) shows SEM images of the surface of PCL scaffolds before and after treatments with NaOH. 2-hour (D), (E) and 24-hour (F)



**Fig. 1.** SEM surface images (1000 $\times$ ) of PCL scaffolds (A) after treatment with 1H–2N (B), 1H–4N (C), 2H–2N (D), 2H–4N (E) and 24H–4N (F).

treatments induced a significant increase in surface cracks when compared with control PCL (A). Long-term treatment with NaOH (F) increased the surface roughness of PCL. Thus, controlled alkaline treatment can modify scaffold topography, which might in theory affect its biocompatibility.

We also evaluated whether the different treatments could change the molecular weight and polydispersity of PCL, and only found significant differences for long-term treatments (24H–4N: lower Mw and higher PI versus untreated PCL) (Table I).

Although it is still not understood how the hydrophobicity or hydrophilicity of materials can regulate cellular activity and tissue regeneration, this is an important parameter to be considered when designing a scaffold since the initial interactions between cells and scaffolds are partly dependent on weak bonds such as dipole–dipole.<sup>20</sup> Table I shows that the hydrophobicity of PCL decreases with

the duration and intensity of NaOH treatment. Untreated PCL exhibited the highest WCA (73.4°). Although there was no difference between 1H–2N (64.9°) and 1H–4N (64°), the WCA of PCL submitted to 2-hour treatments were lower than for 1-hour treatments. In addition, there was a significant difference between 2H–2N (60.5°) and

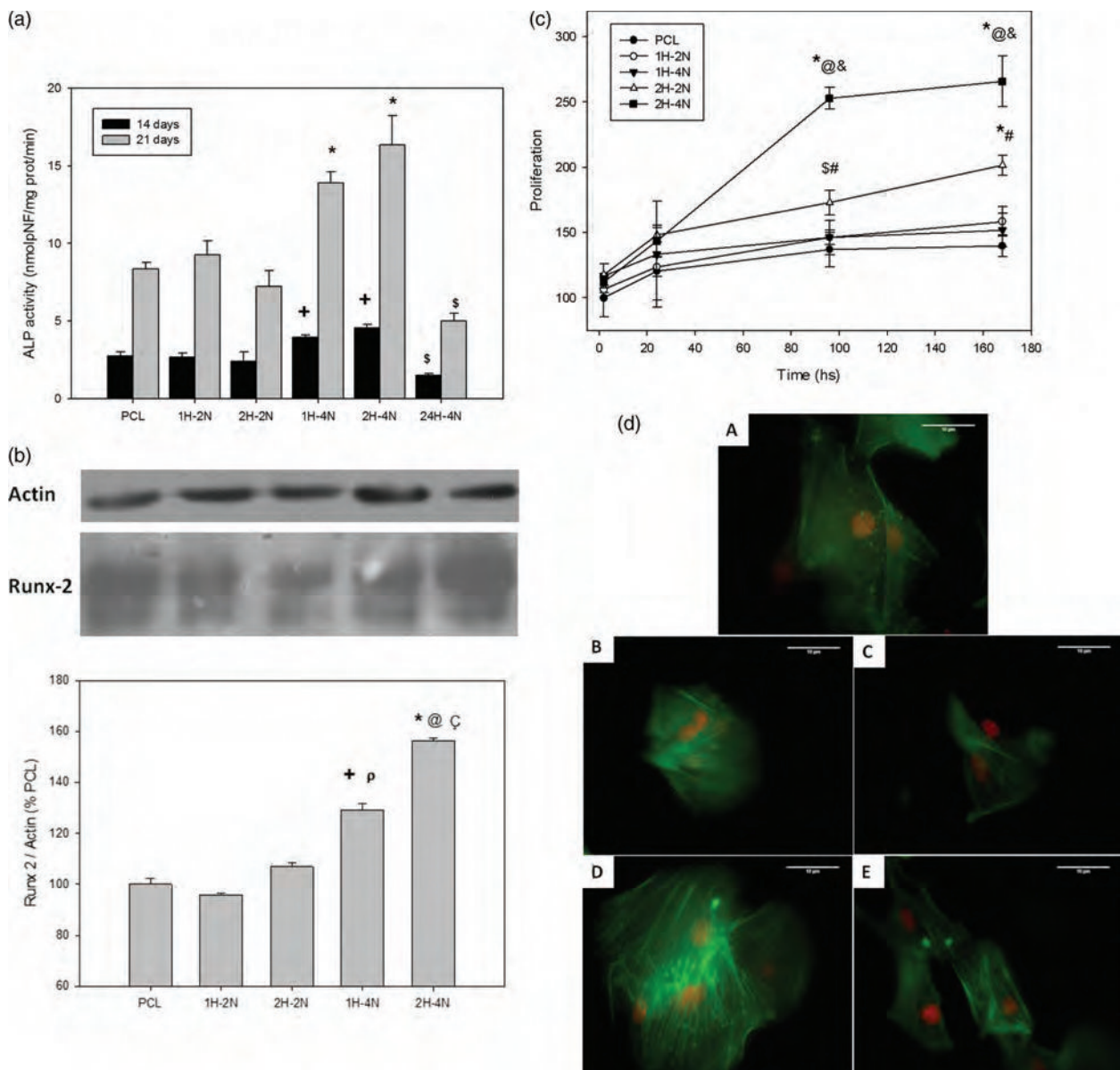
**Table I.** SEC, WCA and mechanical properties of PCL scaffolds after different alkaline treatments (n/d: not detectable).

Scaffold	Mw (g mol <sup>-1</sup> )	PI	WCA (°)	Elastic modulus (MPa)
PCL	65000	1.40	73.4 $\pm$ 0.5	152.28 $\pm$ 10
1H–2N	64967	1.41	64.9 $\pm$ 0.4*	143.42 $\pm$ 12
1H–4N	65121	1.41	64.0 $\pm$ 0.2*	146.59 $\pm$ 16
2H–2N	65051	1.38	60.5 $\pm$ 0.3**	153.73 $\pm$ 13
2H–4N	64912	1.39	56.1 $\pm$ 0.7**&	151.76 $\pm$ 12
24H–4N	51400	3.90	n/d	n/d

Notes: \*:  $p < 0.001$  versus PCL. #:  $p < 0.05$  versus 1H group. &:  $p < 0.01$  versus 2H–2N.

2H-4N (56.1°). Thus, the order of hydrophilicity was: PCL (control) < 1H-2N = 1H-4N < 2H-2N < 2H-4N; showing that the increase in hydrophilicity is directly dependent on the extent of corrosive treatment. However, after a 24-hour treatment of PCL with 4N NaOH, WCA was impossible to determine due to the instability of the water drop on the film. In agreement with our present results, Chen et al. found that a 3-hour treatment of PCL scaffolds with 5N NaOH (using 2-roll-heated-mill and biaxial stretching methods) significantly decreased the WCA of films.<sup>17</sup>

It is important to ensure that after being implanted the scaffold does not collapse, provides mechanical support and guides the repair of bone tissue. Table I shows the elastic moduli of PCL scaffolds before and after different treatments. The elastic modulus of our untreated PCL scaffolds was 152.28 MPa ± 10 Mpa, which is similar to that of mouse femur.<sup>30</sup> 1- and 2-hour treatments with NaOH did not induce significant changes in the elastic modulus of PCL (around 150 MPa). However, 24 hours of exposure to 4N NaOH increased the fragility and breakability



**Fig. 2.** (A) Alkaline Phosphatase activity of BMSC. ALP activity of BMSC extracts grown in an osteogenic medium for 14 and 21 days on different scaffolds. (B) RUNX-2 expression. Cells were plated on different scaffolds and cultured in an osteogenic medium for 3 weeks. The expression of Runx-2 and actin was evaluated by Western immunoblot. (C) BMSC proliferation using MTT assay. Values are expressed as % versus PCL after 2 hours of proliferation. \$:  $p < 0.05$  versus PCL; +:  $p < 0.01$  versus PCL; \*:  $p < 0.001$  versus PCL; #:  $p < 0.05$  versus 1 hour of treatment; @:  $p < 0.001$  versus 1 hour of treatment; ρ:  $p < 0.05$  versus 1 hour of treatment; &:  $p < 0.01$  versus 2H-2N. C:  $p < 0.05$  versus 2H-2N (D) cell morphology. Immunofluorescence for actin (green) and nucleus (red). (A) After treatment with 1H-2N (B), 1H-4N (C), 2H-2N (D), 2H-4N (E) scale bar: 10 μm.

of PCL so much, that we could not determine these parameters.

Figure 2(A) shows the Alkaline Phosphatase activity (ALP) of BMSC grown on the treated and untreated scaffolds, after culturing in osteogenic medium for 2 or 3 weeks. The same patterns were seen for 14 and 21 days: ALP was similar to control (untreated PCL) in scaffolds treated with 2N NaOH for 1 or 2 hours, increased significantly with 1H-4N and 2H-4N PCL films, but greatly decreased with 24H-4N scaffolds. Due to the high fragility of the 24H-4N scaffolds, their reduced Mw and increased IP, to the impossibility of measuring WCA and their decreased biocompatibility for BMSC, they were studied no further.

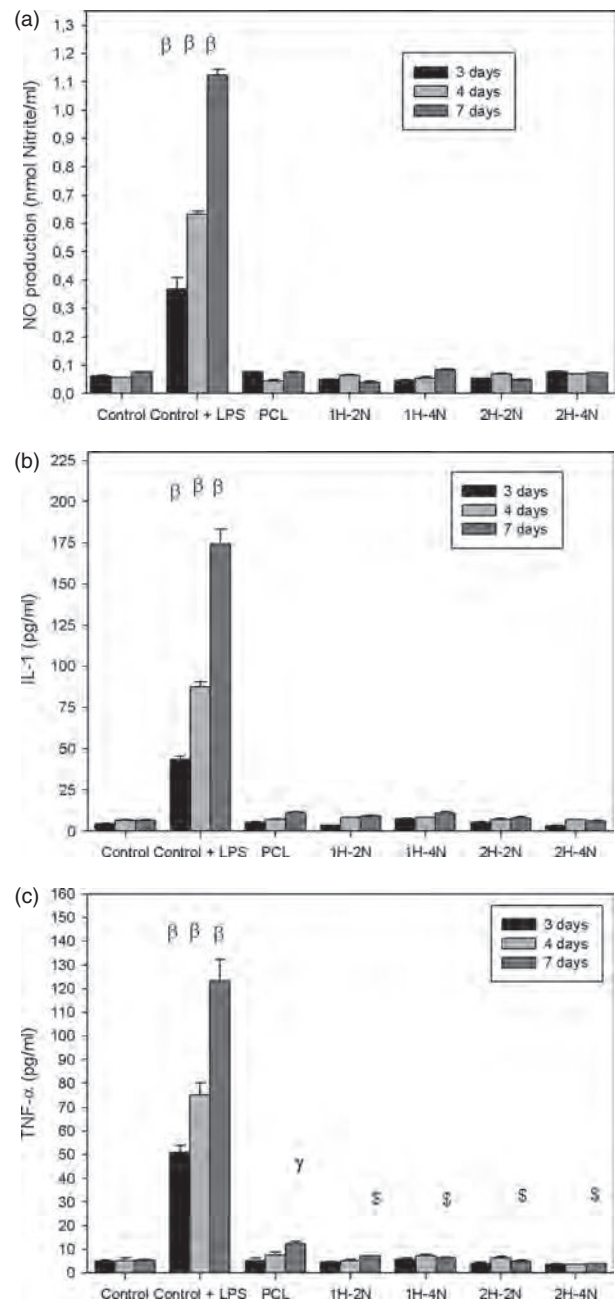
We next evaluated by Western immunoblot whether the treated or untreated matrices differentially affected the expression of Cbfa1/Runx2, one of the major transcription factors for osteoblastogenesis. BMSC growing on different scaffolds were cultured in an osteogenic medium for 3 weeks. Figure 2(B) shows, in agreement with our results for ALP, that the expression of Runx2 was similar for BMSC grown on untreated PCL or on scaffolds modified by 2N NaOH for 1 or 2 hours; increased significantly for cells grown on matrices treated for 1 hour with 4N NaOH; and increased even more for 2H-4N films.

We also studied the attachment and proliferation of BMSC to the different matrices, using the MTT assay. As shown in Figure 2(C), after culturing for 2 hs BMSC adhered similarly to all scaffolds, and after 24 hs showed similar proliferation. However after 96 hs, 2H-2N and 2H-4N treatments increased BMSC proliferation versus control PCL ( $\$$ :  $p < 0.05$  2H-2N vs. PCL and  $*$ :  $p < 0.001$  2H-4N vs. PCL). In addition, BMSC proliferation increased both with the duration of alkaline treatment ( $\#$ :  $p < 0.05$  for 2H vs. 1H-2N and 1H-4N) and with the concentration of NaOH used ( $\&$ :  $p < 0.01$  for 2H-4N vs. 2H-2N). A similar pattern was observed after culturing BMSC on the same scaffolds for 168 hs: a 2-hour alkaline treatment of the matrix (but not a 1-hour treatment) increased BMSC proliferation compared to control PCL. Gümüşderelioğlu et al.<sup>18</sup> have shown that treatment of PCL with NaOH (5H-3N) decreases the proliferation of L929 and MDBK cells after 3, 5 and 7 days of culture. However, using the same alkaline treatment Chen et al.<sup>17</sup> found that NaOH did not affect the proliferation of 3T3 cells after 3, 5 or 7 days of culture. In addition, Vance et al.<sup>19</sup> demonstrated that NaOH treatment (1min-1N and 10 min-1N) of PCL decreased fibroblast proliferation versus control PCL after 5 days of culture.

In further experiments, we stained membrane-associated actin filaments (and nuclei) with specific fluorescent probes, in order to assess cellular interactions and morphology. Figure 2(D) shows that BMSC grown for 5 days on either control or NaOH-treated PCL, adhere in a similar manner and present an extended morphology. This would indicate that the cells interact adequately with the different

matrices, confirming that the membranes offer good support for cell growth.

As has been pointed out above, a very important requirement for biomaterials is that they must not be toxic since they have been designed for incorporation into a living organism. Previously, our group<sup>14,20</sup> and



**Fig. 3.** Cytotoxicity studies. Levels of NO (A), IL-1 (B) and TNF- $\alpha$  (C) produced by RAW 264.7 macrophages cultured on standard plastic tissue culture dishes (control), control + LPS, PCL, 1H-2N, 1H-4N, 2H-2N and 2H-4N. Except for LPS (positive control) and TNF- $\alpha$  secretion by RAW264.7 after 7 days culture on PCL, no significant differences were observed for the release of NO or secretion of cytokines in any other condition. As expected, LPS induced a significant increase in all pro-inflammatory markers.  $\beta$ :  $p < 0.001$  versus control and scaffolds.  $\$$ :  $p < 0.05$  versus PCL.  $\gamma$ :  $p < 0.05$  versus control.

other researchers<sup>21–23</sup> have shown that macrophages are a very sensitive culture model to evaluate possible *in vitro* inflammatory responses to a material with potential applications in tissue engineering. Therefore, the materials developed in our laboratory were evaluated to determine their potential cytotoxicity, assessing the release of NO and the pro-inflammatory cytokines TNF- $\alpha$  and IL-1<sup>23</sup> by macrophages cultured on the different materials for 3, 4 and 7 days. Figure 3(A) shows that release of NO from cells grown on all evaluated polymers was similar to control (standard plastic tissue culture dish). When 0.1 g·ml<sup>-1</sup> LPS was added to the culture medium as a positive control of cytotoxicity, a statistically significant ( $\beta$ :  $p < 0.001$ ) increase in NO released to the culture media was detected. In addition, Figure 3(B) shows that there was no significant difference in the levels of IL-1 secreted into the culture medium between cells grown on the different polymeric scaffolds, or standard plastic tissue culture dishes. Again, in the presence of LPS cells responded by increasing the production of this cytokine after 3, 4 and 7 days of culture. A similar behaviour was observed for secretion of TNF- $\alpha$  (Fig. 3(C)), namely no significant differences between standard plastic tissue culture dishes and NaOH-treated PCL matrices. Surprisingly, secretion of TNF- $\alpha$  increased significantly after culturing RAW 264.7 macrophages for 7 days on untreated PCL scaffolds. However, this increase was much lower than the levels of TNF- $\alpha$  induced by addition of LPS to the culture medium. We have previously evaluated<sup>20</sup> the cytotoxicity for RAW 264.7 macrophages of PCL (and of a compatibilized blend of PCL with polyfumarate), with and without hydroxiapatite. Although in those studies we found that PCL did not increase TNF- $\alpha$  secretion after 3 days of culture, longer-term (7-day) cultures were not evaluated.

#### 4. CONCLUSION

We have evaluated the effect of different NaOH treatments on physicochemical and biological properties of PCL films obtained by casting methods. Controlled alkaline treatment of PCL induced:

- (1) a more hydrophilic material with increased surface roughness;
- (2) greater biocompatibility for bone marrow stromal cells; and
- (3) lack of cytotoxicity for macrophages in culture.

In addition, we found that a 2-hour treatment with NaOH was more effective than a 1-hour treatment in improving biocompatibility for bone-derived cells. Therefore, treatment for 2 hours with NaOH can be used to increase the biocompatibility of PCL scaffolds.

**Acknowledgments:** This work was partially supported by grants from Facultad de Ciencias Exactas, Universidad Nacional de La Plata (UNLP), Comisión de Investigaciones Científicas de la Provincia de Buenos Aires

(CICPBA) and Agencia Nacional de Promoción Científica y Tecnológica (Agencia). Juan Manuel Fernandez is a member of the carrer of Investigador Científico del CONICET.

#### References and Notes

1. M. Braddock, M. P. Houston, C. Campbell, and P. P. Ashcroft, *Physiology* 16, 208 (2001).
2. P. X. Ma, R. Zhang, G. Xiao, and R. Franceschi, *Journal of Biomedical Materials Research* 54, 284 (2001).
3. M. Morosano, A. Masoni, and A. Sánchez, *Osteoporosis International* 16, 1339 (2005).
4. J. R. Porter, T. T. Ruckh, and K. C. Popat, *Biotechnol. Progr.* 25, 1539 (2009).
5. R. Langer and J. Vacanti, *Science* 260, 920 (1993).
6. P. X. Ma, *Mater. Today* 7, 30 (2004).
7. M. S. Cortizo, M. S. Molinuevo, and A. M. Cortizo, *Journal of Tissue Engineering and Regenerative Medicine* 2, 33 (2008).
8. D. W. Hutmacher, *Biomaterials* 21, 2529 (2000).
9. V. Karageorgiou and D. Kaplan, *Biomaterials* 26, 5474 (2005).
10. X. Liu and P. X. Ma, *Annals of Biomedical Engineering* 32, 477 (2004).
11. E. L. Hedberg, C. K. Shih, J. J. Lemoine, M. D. Timmer, M. A. K. Liebschner, J. A. Jansen, and A. G. Mikos, *Biomaterials* 26, 3215 (2005).
12. M. A. Pattison, S. Wurster, T. J. Webster, and K. M. Haberstroh, *Biomaterials* 26, 2491 (2005).
13. M. C. Serrano, R. Pagani, M. Vallet-Regi, J. P. Comas, and M. T. Portoles, *Acta Biomaterialia* 5, 2045 (2009).
14. A. M. Cortizo, G. Ruderman, G. Correa, I. G. Mogilner, and E. J. Tolosa, *J. Biomater. Tissue Eng.* 2, 125 (2012).
15. J. M. Fernandez, M. S. Cortizo, A. M. Cortizo, and G. A. Abraham, *J. Biomater. Tissue Eng.* 1, 86 (2011).
16. P. S. Tan and S. H. Teoh, *Mater. Sci. Eng.* 27, 304 (2007).
17. F. Chen, C. N. Lee, and S. H. Teoh, *Mater. Sci. Eng.: C* 27, 325 (2007).
18. M. Gümüşderelioglu, F. B. Kaya, and I. G. Beşkardeş, *J. Colloid Interface Sci.* 358, 444 (2011).
19. R. J. Vance, D. C. Miller, A. Thapa, K. M. Haberstroh, and T. J. Webster, *Biomaterials* 25, 2095 (2004).
20. J. M. Fernandez, M. S. Cortizo, and A. M. Cortizo, *J. Biomater. Tissue Eng.* 4, 227 (2014).
21. J. Bixby, T. D. Ray, and F. K. M. Chan, *Current Medicinal Chemistry—Anti-Inflammatory and Anti-Allergy Agents* 4, 557 (2005).
22. M. Blonska, Z. P. Czuba, and W. Krol, *Scandinavian Journal of Immunology* 57, 162 (2003).
23. L. C. Denlinger, P. L. Fiset, K. A. Garis, G. Kwon, A. Vazquez-Torres, A. D. Simon, B. Nguyen, R. A. Proctor, and P. J. Bertics, *J. Biol. Chem.* 271, 337 (1996).
24. M. S. Molinuevo, L. Schurman, A. D. McCarthy, A. M. Cortizo, M. J. Tolosa, M. V. Gangoiti, V. Arnol, and C. Sedlinsky, *Journal of Bone and Mineral Research* 25, 211 (2010).
25. A. M. Cortizo and S. B. Etcheverry, *Mol. Cell Biochem.* 145, 97 (1995).
26. M. M. Bradford, *Anal. Biochem.* 72, 248 (1976).
27. M. S. Molinuevo, S. B. Etcheverry, and A. M. Cortizo, *Toxicology* 210, 205 (2005).
28. V. C. Sálice, A. M. Cortizo, C. L. G. Dumm, and S. B. Etcheverry, *Mol. Cell. Biochem.* 198, 119 (1999).
29. A. M. Cortizo, M. Caporossi, G. Lettieri, and S. B. Etcheverry, *Eur. J. Pharmacol.* 400, 279 (2000).
30. W. G. Ding, S. D. Jiang, Y. H. Zhang, L. S. Jiang, and L. Y. Dai, *Osteoporos Int.* 22, 507 (2011).

Received: xx Xxxx xxxx. Accepted: xx Xxxx xxxx.