



Discriminating image textures with the multiscale two-dimensional complexity-entropy causality plane



Luciano Zunino^{a,b,*}, Haroldo V. Ribeiro^c

^a Centro de Investigaciones Ópticas (CONICET La Plata - CIC), C.C. 3, 1897 Gonnet, Argentina

^b Departamento de Ciencias Básicas, Facultad de Ingeniería, Universidad Nacional de La Plata (UNLP), 1900 La Plata, Argentina

^c Departamento de Física, Universidade Estadual de Maringá, Maringá, PR 87020-900, Brazil

ARTICLE INFO

Article history:

Received 4 December 2015

Revised 6 July 2016

Accepted 6 September 2016

Keywords:

Texture images

Roughness

Entropy

Complexity

Ordinal patterns probabilities

Multiscale analysis

ABSTRACT

The aim of this paper is to further explore the usefulness of the two-dimensional complexity-entropy causality plane as a texture image descriptor. A multiscale generalization is introduced in order to distinguish between different roughness features of images at small and large spatial scales. Numerically generated two-dimensional structures are initially considered for illustrating basic concepts in a controlled framework. Then, more realistic situations are studied. Obtained results allow us to confirm that intrinsic spatial correlations of images are successfully unveiled by implementing this multiscale symbolic information-theory approach. Consequently, we conclude that the proposed representation space is a versatile and practical tool for identifying, characterizing and discriminating image textures.

© 2016 Elsevier Ltd. All rights reserved.

1. Introduction

The development of complexity measures for two or higher dimensional data has been recognized as a long-standing goal [1]. Several approaches were introduced during the last two decades for a quantitative distinction between different types of ordering or pattern in two-dimensional signals, such as images [2,3]. In particular, techniques to detect fractal and multifractal features have been shown to be useful for dealing with the characterization of self-similar and extended self-similar objects [4–8]. These approaches have their roots in the seminal work of Mandelbrot [9], who just introduced fractal geometry to mimic natural textured patterns. Cloudy textures, such as those associated with mammographic, terrain, fire, dust, cloud, and smoke images can be suitably described by these scaling and multiscaling analysis [5,6]. Actually, recent effective applications in heterogeneous fields confirm that these fractal techniques are highly valuable tools, e.g. identification of lesion regions of crop leaf affected by diseases [10], Hurst exponent estimation performed on satellite images to measure changes on the Earth's surface [11], and determination of scaling properties in encrypted images [12]. Despite all these significant efforts, the development of a robust methodology to detect

and quantify spatial structures in images still represents an open and subtle problem. Along this research direction, we have previously introduced an extension of the complexity-entropy causality plane to more than one dimension [13]. It has been shown that the two-dimensional version of this information-theory-derived tool is very promising for distinguishing between two-dimensional patterns. Motivated by this fact, in the present paper, we implement the two-dimensional complexity-entropy causality plane in different numerical and experimental contexts with the aim of testing its potentiality as a texture image quantifier. Furthermore, a multiscale generalization of the original recipe is proposed for characterizing the dominant textures at different spatial scales. As it will be shown, this multiscale approach offers a considerable improvement to the original tool introduced in Ref. [13]. Since any image corresponds to a two-dimensional ordered array, we conjecture that the proposed multiscale ordinal symbolic approach can be a useful alternative for an efficient and robust characterization of its features, offering deeper insights into the understanding of the underlying phenomenon that governs the spatial dynamics of the system at different resolution scales.

This paper is organized as follows. In the next section, a brief review of the two-dimensional complexity-entropy causality plane is given. Besides, its generalization to multiple spatial scales is also described. In Section 3, we have included several numerical and experimental applications. More precisely, in Section 3.1, an initial periodic ornament is carefully analyzed when adding a variable

* Corresponding author.

E-mail addresses: lucianoz@ciop.unlp.edu.ar (L. Zunino), hvr@dfi.uem.br (H.V. Ribeiro).

degree of randomness by changing the color of each pixel with a given probability. A numerically controlled example to illustrate the importance of implementing a multiscale analysis is detailed in Section 3.2. The normalized Brodatz texture database is studied in Section 3.3 and results obtained from the characterization of some real images of interest are included in Section 3.4. Finally, the main conclusions of this research are summarized in the last Section 4.

2. Complexity-entropy causality plane for two-dimensional patterns

A two-dimensional symbolization procedure, following the encoding scheme introduced by Bandt and Pompe (BP) [14], is applied to the image under study. Given a $N_x \times N_y$ image (2D array), the symbolic sequences are obtained by considering the spatial ranking information (ordinal or permutation patterns) associated with overlapping subarrays of size $D_x \times D_y$. This procedure can be better introduced with a simple example; let us assume that we start with the 3×3 array given below

$$A = \begin{pmatrix} 3 & 4 & 8 \\ 5 & 6 & 7 \\ 2 & 8 & 9 \end{pmatrix}.$$

Four parameters, the embedding dimensions $D_x, D_y \geq 2$ ($D_x, D_y \in \mathbb{N}$, the number of symbols that form the ordinal pattern in the two orthogonal directions) and the embedding delays τ_x and τ_y ($\tau_x, \tau_y \in \mathbb{N}$, the spatial separation between symbols in the two orthogonal directions) are chosen. The matrix is partitioned into overlapping subarrays of size $D_x \times D_y$ with delays τ_x and τ_y in the horizontal and vertical directions, respectively. The elements in each new partition are replaced by their ranks in the subset. For instance, if we set $D_x = D_y = 2$ and $\tau_x = \tau_y = 1$, there are four different partitions associated with A . The first subarray $A_1 = \begin{pmatrix} a_0 & a_1 \\ a_2 & a_3 \end{pmatrix} = \begin{pmatrix} 3 & 4 \\ 5 & 6 \end{pmatrix}$ is mapped to the ordinal pattern (0123) since $a_0 \leq a_1 \leq a_2 \leq a_3$. The second partition is $A_2 = \begin{pmatrix} a_0 & a_1 \\ a_2 & a_3 \end{pmatrix} = \begin{pmatrix} 4 & 8 \\ 6 & 7 \end{pmatrix}$, and (0231) will be its related ordinal motif because $a_0 \leq a_2 \leq a_3 \leq a_1$. The next subarray $A_3 = \begin{pmatrix} a_0 & a_1 \\ a_2 & a_3 \end{pmatrix} = \begin{pmatrix} 5 & 6 \\ 2 & 8 \end{pmatrix}$ is associated with the ordinal pattern (2013), and the last one $A_4 = \begin{pmatrix} a_0 & a_1 \\ a_2 & a_3 \end{pmatrix} = \begin{pmatrix} 6 & 7 \\ 8 & 9 \end{pmatrix}$ is also mapped to the motif (0123). Subarrays with consecutive elements are taken in the above example because the embedding delays τ_x and τ_y are fixed equal to one. However, non-consecutive elements of the original array can be considered by changing the embedding delays. For instance, by choosing $\tau_x = 2$ and $\tau_y = 1$ only two partitions are obtained from array A , namely $A_1 = \begin{pmatrix} 3 & 8 \\ 5 & 7 \end{pmatrix}$ and $A_2 = \begin{pmatrix} 5 & 7 \\ 2 & 9 \end{pmatrix}$. Their related ordinal permutations will be (0231) and (2013), respectively. Finally, in the case $\tau_x = \tau_y = 2$ only one subarray, $A_1 = \begin{pmatrix} 3 & 8 \\ 2 & 9 \end{pmatrix}$, with motif (2013) can be obtained. It is worth remarking that different spatial resolution scales are taken into account by changing the embedding delays.

An ordinal pattern probability distribution

$$P_{BP} = \{p(\pi_i), i = 1, \dots, (D_x D_y)!\}, \quad (1)$$

is subsequently obtained by computing the relative frequencies of the $(D_x D_y)!$ possible ordinal patterns π_i . For a reliable estimation of this distribution, the image size must be at least an order of magnitude larger than the number of possible ordinal states, i.e. $N_x N_y \gg (D_x D_y)!$. It is clear that the 2D encoding scheme previously described is not univocally defined. Actually, instead of ordering

the elements row-by-row, an alternative column-by-column ordering recipe could be proposed. However, the BP probability distribution (Eq. (1)) would remain unchanged since only the label given to the accessible states would change by implementing this alternative definition.

Once the BP probability distribution has been obtained, any information-theory-derived quantifier can be estimated. In particular, and in order to introduce the complexity-entropy diagram, the two involved measures—entropy and complexity—need to be defined. Around a decade ago, Rosso et al. [15] proposed to use the normalized Shannon entropy and the normalized Jensen-Shannon complexity for such a purpose. It has been shown that chaotic and stochastic time series are located at different regions of this representation space, thus allowing an efficient discrimination between these two kinds of dynamics that are commonly very hard to distinguish. Given any arbitrary discrete probability distribution $P = \{p_i, i = 1, \dots, M\}$, the Shannon's logarithmic information measure is given by

$$S[P] = - \sum_{i=1}^M p_i \ln p_i. \quad (2)$$

The Shannon entropy $S[P]$ is regarded as a measure of the uncertainty associated to the physical processes described by the probability distribution P . It is equal to zero when we can predict with full certainty which of the possible outcomes i whose probabilities are given by p_i will actually take place. Our knowledge of the underlying process described by the probability distribution is maximal in this instance. In contrast, this knowledge is minimal and the entropy (ignorance) is maximal ($S_{\max} = S[P_e] = \ln M$) for the equiprobable distribution, i.e. $P_e = \{p_i = 1/M, i = 1, \dots, M\}$. The Shannon entropy is a quantifier for randomness. It is well-known, however, that the degree of structure present in a process is not quantified by randomness measures and, consequently, measures of statistical or structural complexity are necessary for a better understanding of complex dynamics [16]. As stated by Lange et al. [17]: *One would like to have some functional $C[P]$ adequately capturing the “structuredness” in the same way as Shannon's entropy captures randomness.* There is not a universally accepted definition of complexity [18]. In this work, we have implemented the effective statistical complexity measure (SCM) introduced by Lamberti et al. [19], following the seminal notion advanced by López-Ruiz et al. [20], through the product

$$C_{JS}[P] = Q_J[P, P_e] \mathcal{H}_S[P] \quad (3)$$

of the normalized Shannon entropy

$$\mathcal{H}_S[P] = S[P]/S_{\max} \quad (4)$$

and the disequilibrium $Q_J[P, P_e]$ defined in terms of the Jensen-Shannon divergence. That is,

$$Q_J[P, P_e] = \mathcal{J}[P, P_e]/\mathcal{J}_{\max} \quad (5)$$

with

$$\mathcal{J}[P, P_e] = S[(P + P_e)/2] - S[P]/2 - S[P_e]/2 \quad (6)$$

the above-mentioned Jensen-Shannon divergence and \mathcal{J}_{\max} the maximum possible value of $\mathcal{J}[P, P_e]$. Being more precise, $\mathcal{J}_{\max} = -\frac{1}{2} \{ \frac{M+1}{M} \ln(M+1) - 2 \ln(2M) + \ln(M) \}$ is obtained when one of the components of P , say p_m , is equal to one and the remaining p_i are equal to zero. The Jensen-Shannon divergence quantifies the difference between two (or more) probability distributions. For further details about this information-theory divergence measure please see Refs. [21,22]. Note that the above introduced SCM depends on two different probability distributions, the one associated to the system under analysis, P , and the uniform distribution, P_e .

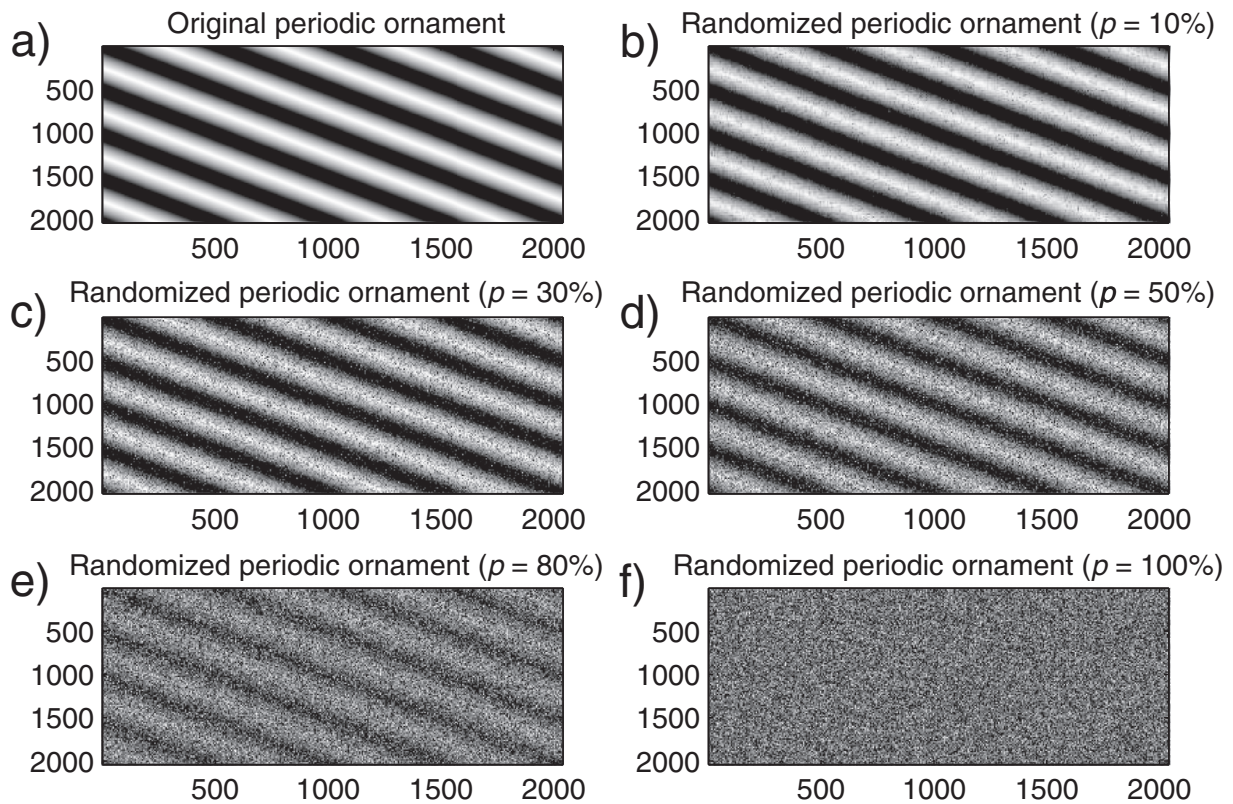


Fig. 1. The original periodic image is depicted in (a). Randomized periodic ornaments with probabilities $p = 10\%$, $p = 30\%$, $p = 50\%$, $p = 80\%$ and $p = 100\%$ are illustrated in (b), (c), (d), (e) and (f), respectively. Images are composed of 256 grayscale levels and have $2,040 \times 2,040$ pixels.

Furthermore, it was shown that for a given value of \mathcal{H}_S , the range of possible C_{JS} values varies between a minimum C_{JS}^{\min} and a maximum C_{JS}^{\max} , restricting the possible values of the SCM in a given complexity-entropy plane [23]. Thus, it is clear that important additional information related to the correlational structure between the components of the system is provided by evaluating the statistical complexity measure.

In this work, the normalized Shannon entropy, \mathcal{H}_S (Eq. (4)), and the SCM, C_{JS} (Eq. (3)), are evaluated using the permutation probability distribution (Eq. (1)). Defined in this way, these quantifiers are usually known as *permutation entropy* and *permutation statistical complexity* [24]. They characterize the diversity and correlational structure, respectively, of the spatial orderings present in the image. The *complexity-entropy causality plane* (CECP) is defined as the representation space obtained by plotting permutation statistical complexity (vertical axis) versus permutation entropy (horizontal axis) for a given system [15]. The term *causality* remembers the fact that spatial correlations between samples are taken into account through the BP recipe used to estimate both information-theory quantifiers. The implementation of this kind of diagram as a diagnostic tool was originally proposed by López-Ruiz et al. [20] more than two decades ago. The large number of applications spread over multiple lines of research is a solid proof of its success. Without being exhaustive, we can mention the classification of literary texts [25], the characterization of several financial time series (particularly records obtained from stock [26], commodity [27], and bond [28,29] markets), the discrimination of music genres [30], the identification of a universal behavior in the complex dynamics of x-ray astrophysical sources [31], the analysis of stream flow time series within hydrological studies [17,32], the description of brain development in chickens [33], the quantification of non-stationarity effect in boundary-layer vertical velocity time series

[34], and the study of fluctuating time series of different turbulent plasmas [35].

As it has been mentioned before, the embedding delays determine the spatial separation between symbols. That is, they physically correspond to multiples of the spatial resolution scale of the image under analysis. Consequently, different spatial resolution scales can be scanned by changing the embedding delays of the symbolic reconstruction. We propose to generalize the estimation of both symbolic quantifiers (permutation entropy and statistical complexity) to different embedding delays τ_x and τ_y for given embedding dimensions D_x and D_y . This *multiscale* CECP seems to be particularly suitable for characterizing the spatial correlations of images at different resolution scales.

3. Numerical and experimental results

3.1. Two-dimensional noisy ornaments

As a first numerically controlled application and following the geometric ornament model proposed in Refs. [2,3], we have generated a periodic figure composed of 256 grayscale levels of size $2,040 \times 2,040$. The original periodic ornament is shown in Fig. 1(a). This very regular 2D array is gradually randomized by changing the color of each pixel with probability p . An aleatory grayscale level is assigned to the modified pixels. In Fig. 1(b)–(f) five randomized ornaments are illustrated. Spatial correlations are clearly dominant for lower values of p whereas more random patterns emerge for higher values of this parameter.

We have applied the proposed approach to these noisy ornaments in order to follow how the symbolic quantifiers change as a function of the probability of change p ($p \in \{1, 2, 3, 4, 5, 10, 15, \dots, 95, 100\}$). Curves described in the 2D CECP for different embedding dimensions D_x and D_y are depicted in

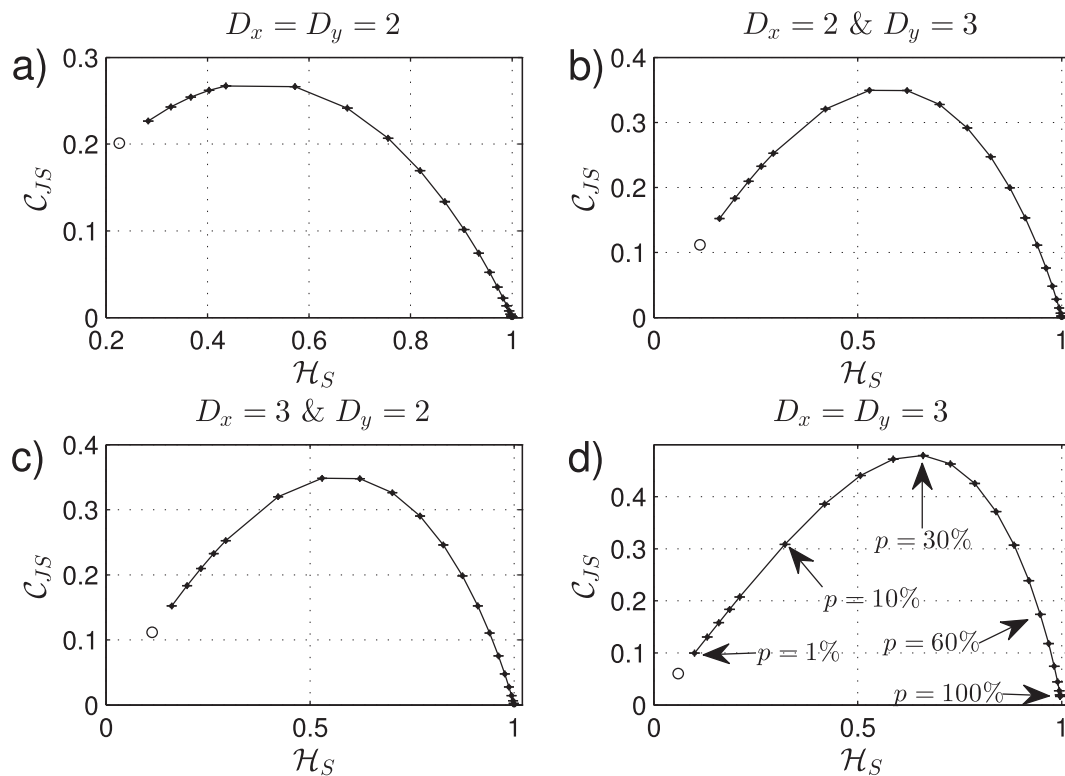


Fig. 2. Curves described by the noisy periodic ornaments in the 2D CECP for different embedding dimensions: (a) $D_x = D_y = 2$, (b) $D_x = 2 \ \& \ D_y = 3$, (c) $D_x = 3 \ \& \ D_y = 2$, and (d) $D_x = D_y = 3$. The probability of change $p \in \{1, 2, 3, 4, 5, 10, 15, \dots, 95, 100\}$ is increasing from left to right. Mean and standard deviation (as error bar) of the ordinal quantifiers estimations for ten independent realizations for each p -value are plotted. Empty circles indicate the location of the original periodic ornament.

Fig. 2. In this case, we have analyzed the images with their original spatial resolutions, *i.e.* with $\tau_x = \tau_y = 1$. For each value of the probability p , ten independent realizations were generated. Mean and standard deviation of the ordinal quantifiers for this set of realizations are plotted in Fig. 2. Comparing Fig. 2(b) and (c), we noticed that the curve described in the CECP is invariant under the rotation $D_x \rightarrow D_y$ and $D_y \rightarrow D_x$, a feature that reflects the image symmetry. The 2D CECP locates the noisy ornaments in accord with intuitive notions, *i.e.* regular two-dimensional patterns have lower values for both entropy and complexity, whereas random structureless ornaments have entropies near one and complexity close to zero. In the intermediate generated ornaments, hidden order behind a randomness environment can be visually discriminated. These more complex structures are suitably characterized by the 2D CECP. More precisely, a maximum of the normalized Jensen-Shannon complexity is reached at the frontier between order and disorder as it is expected. Particularly, the maximum complexity value estimated for embedding dimensions $D_x = D_y = 3$ corresponds to the noisy ornament with parameter $p = 30\%$ depicted in Fig. 1(c).

3.2. Multiscale analysis: discriminating roughness at different scales

It is widely recognized that natural images are complex structures with different textures at relatively small and large spatial scales. As stressed by Alvarez-Ramirez et al. [6]: *rarely natural textures can be characterized with a single roughness parameter*. Indeed, the multiscale Hurst exponent has been proposed as an alternative for quantifying roughness at various scales [4,5]. The Hurst exponent is a parameter that control the roughness of the fractional Brownian motion (fBm) model. Mandelbrot introduced this self-similar stochastic process for simulating natural textures [9].

In order to test the ability of the ordinal symbolic quantifiers for distinguishing between different textures at small and large

resolution scales, a second numerically generated application is studied. A fBm surface with Hurst exponent $H = 0.9$ is simulated through the random midpoint displacement algorithm. Further details about this method for generating fractal landscapes can be found in Ref. [13]. The simulated fractal surface, of size $2,000 \times 2,000$ pixels, is shown in Fig. 3(a). The original image is then segmented into non-overlapping arrays of size $L_{cross} \times L_{cross}$ pixels, and the elements inside these arrays are subsequently shuffled spatially. In such a way, all the underlying spatial correlations for scales lower than the crossover length L_{cross} are destroyed whereas spatial correlations at larger scales are conserved. Illustrative examples of the transformed images obtained by applying this procedure are depicted in Fig. 3(b)-(d) for crossover lengths equal to 25, 50, and 100, respectively. Both ordinal quantifiers (\mathcal{H}_S & C_{JS}) are estimated for these four fractal surfaces fixing the embedding dimensions ($D_x = D_y = 2$) and varying the embedding delays $\tau_x = \tau_y = \tau$ ($1 \leq \tau \leq 200$). Results are plotted in Fig. 4. For low τ -values, \mathcal{H}_S and C_{JS} are close to 1 and 0, respectively, confirming the presence of uncorrelated random behavior for small spatial scales. On the other hand, the estimated values for both ordinal quantifiers tend to those associated with the original “pure” fBm surface with $H = 0.9$ for large spatial scales. Thus, the proposed multiscale quantifiers are shown to be able to discriminate between different roughness features according to the considered spatial resolution. Last but not least, this analysis also confirms that the crossover length can be suitably identified with this approach.

3.3. Normalized Brodatz texture database

The 112 texture images given in the Normalized Brodatz Texture (NBT) album have been analyzed through the 2D CECP. This normalized database is an improvement regarding the original Bro-

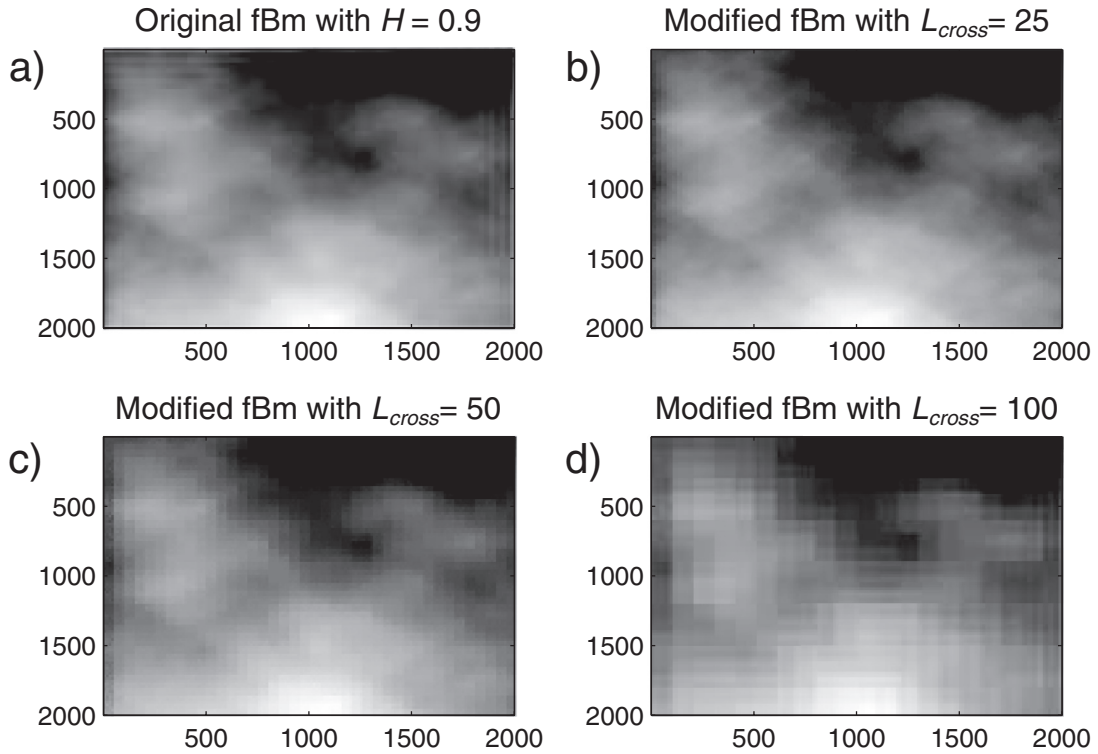


Fig. 3. (a) Numerically simulated fBm surface with Hurst exponent $H = 0.9$ of size $2,000 \times 2,000$ pixels. (b)–(d) Modified fractal surfaces with $L_{cross} = 25$, $L_{cross} = 50$, and $L_{cross} = 100$, respectively. Spatial correlations for scales lower than the crossover length L_{cross} are destroyed by shuffling (randomly reordering).

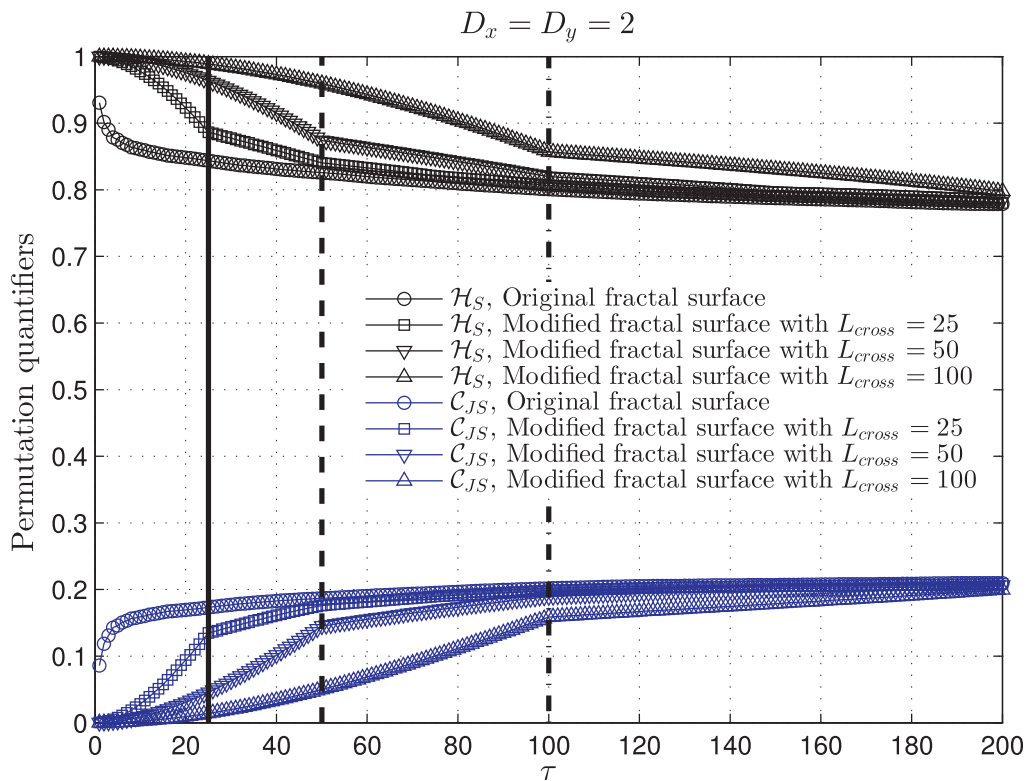


Fig. 4. Estimated \mathcal{H}_S and \mathcal{C}_{JS} as a function of the embedding delay τ ($\tau_x = \tau_y = \tau$) with $D_x = D_y = 2$ for the four images displayed in Fig. 3. Vertical solid, dashed and dash-dotted black lines indicate the crossover lengths 25, 50 and 100, respectively. (For interpretation of the references to color in this figure legend, the reader is referred to the web version of this article.)

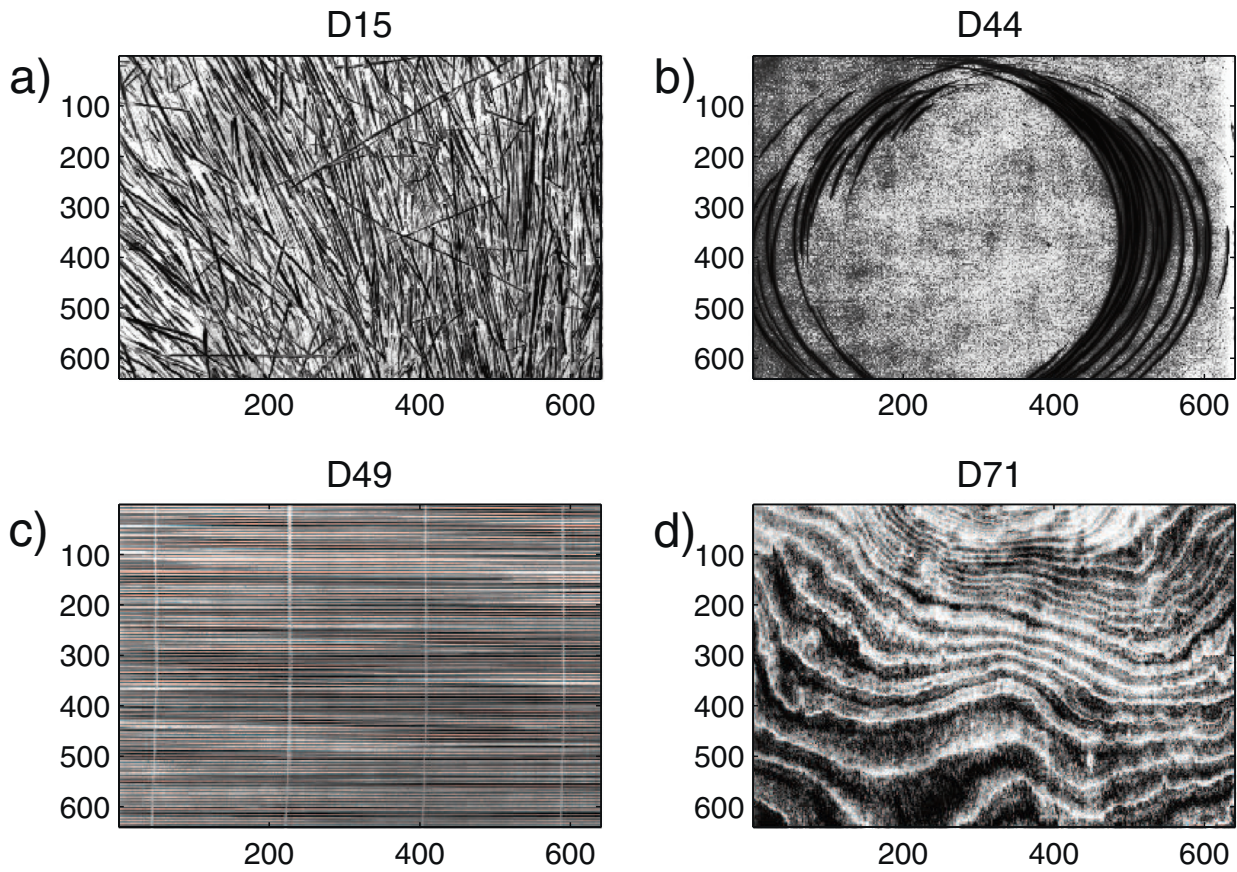


Fig. 5. Four samples of the NBT album with their corresponding labels are illustrated: (a) D15, (b) D44, (c) D49, and (d) D71.

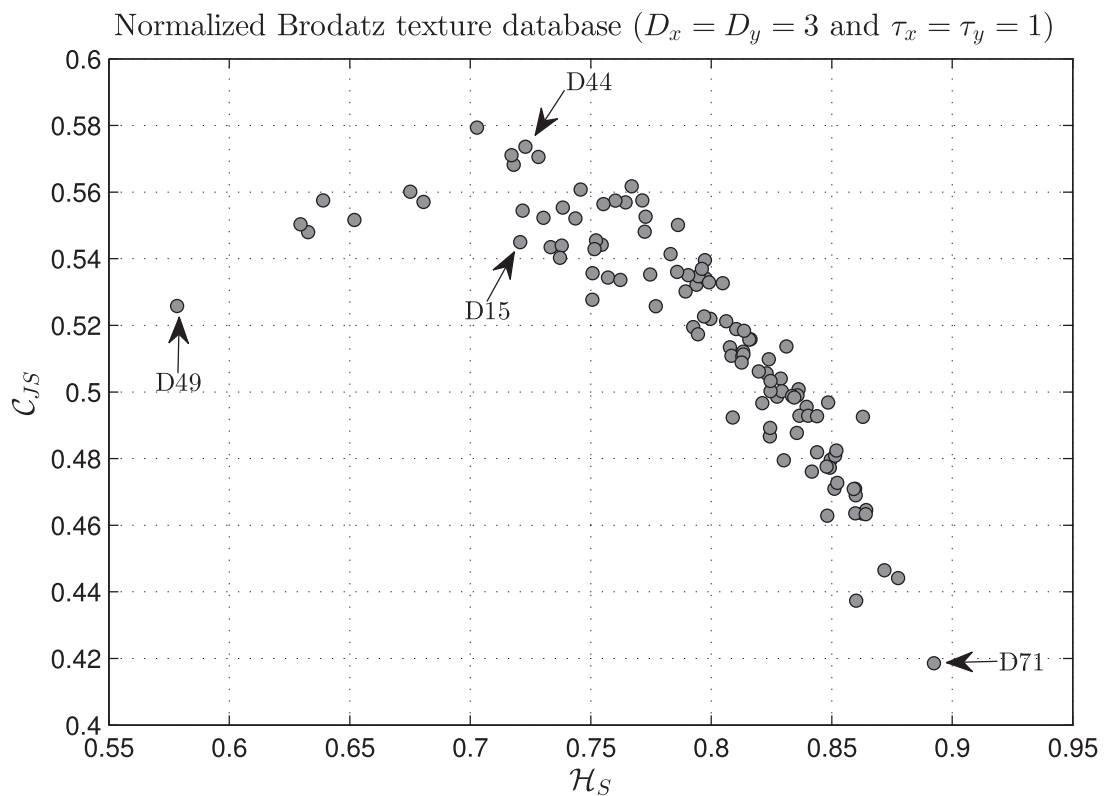


Fig. 6. Location of the 112 texture images from the NBT album in the CECP. Quantifiers were estimated by implementing a symbolic reconstruction with $D_x = D_y = 3$ and $\tau_x = \tau_y = 1$.

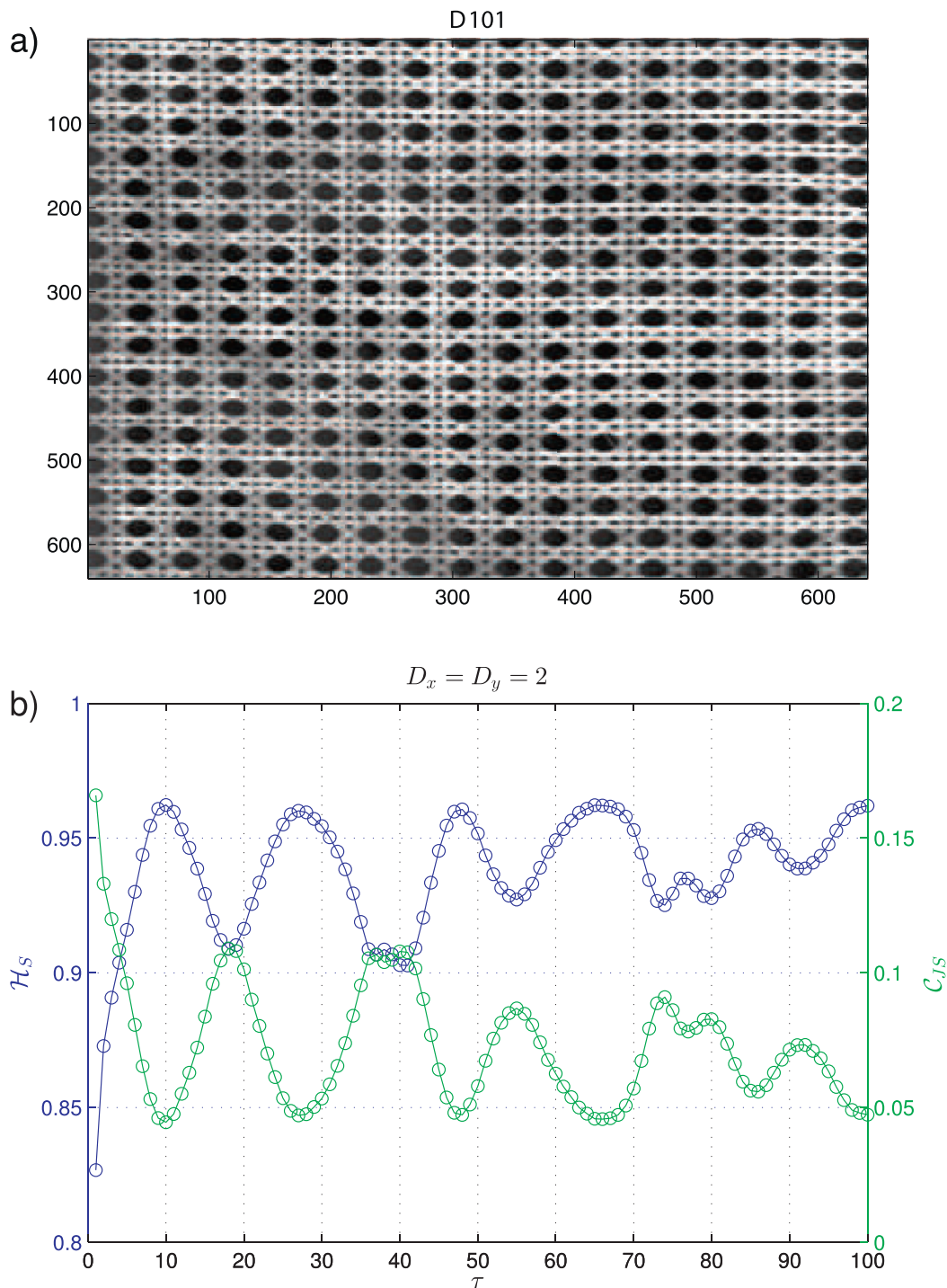


Fig. 7. (a) Normalized Brodatz texture labeled as D101. (b) Multiscale analysis ($\tau_x = \tau_y = \tau, 1 \leq \tau \leq 100$) of this normalized Brodatz texture for embedding dimensions $D_x = D_y = 2$. (For interpretation of the references to color in this figure legend, the reader is referred to the web version of this article.)

datz texture database since grayscale background effects have been removed [36]. Consequently, it is impossible to discriminate between textures from this normalized database using only first order statistics. Four different samples of the NBT database are illustrated in Fig. 5. It is worth remarking that the standard Brodatz grayscale texture album [37], composed of 112 grayscale images representing a large variety of natural textures, has been widely used as a validation dataset of texture methods (e.g., Refs. [38–43], among many others). The NBT image database is

available at the following link: http://multibandtexture.recherche.usherbrooke.ca/normalized_brodatz.html. The images of the NBT album have dimensions of 640×640 pixels and 8 bits/pixel, which provides 256 grayscale levels. Locations of these normalized 112 texture images in the CECP for $D_x = D_y = 3$ and $\tau_x = \tau_y = 1$ are shown in Fig. 6. Notice that they spread over the proposed representation space. Locations of the four particular normalized Brodatz images displayed in Fig. 5 are indicated. It is worth noting that both quantifiers should be estimated to discriminate between

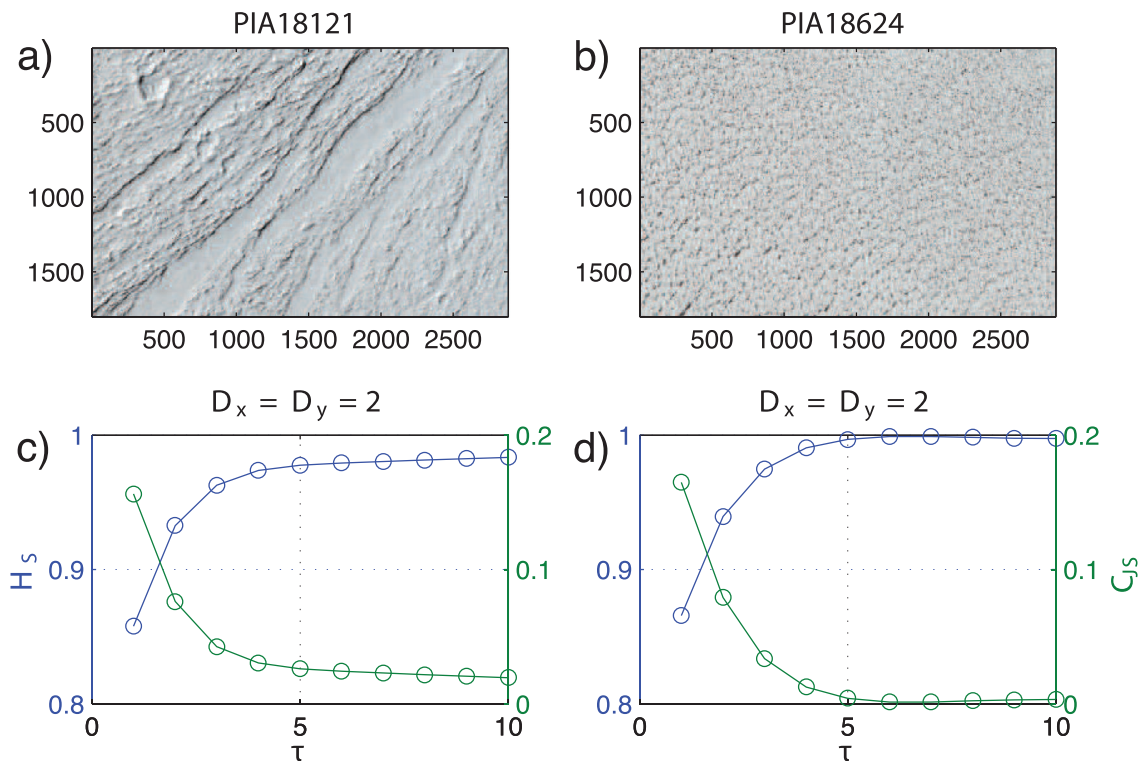


Fig. 8. Real image analysis: (a)–(b) two high-resolution images from Mars (PIA18121 and PIA18624 from the Planetary Image Archive, Photojournal interface); (c)–(d) Multi-scale analysis of the green channel performed for $D_x = D_y = 2$, $\tau_x = \tau_y = \tau$ and $1 \leq \tau \leq 10$. Similar curves are obtained for the red and blue channels. (For interpretation of the references to color in this figure legend, the reader is referred to the web version of this article.)

the different texture images. For instance, D15 and D44 have approximately the same estimated \mathcal{H}_S value. However, the calculated C_{JS} value for D44 is higher than that estimated for D15.

Evidently, due to their intrinsic heterogeneity, texture images from the NBT database call for a multiscale analysis in order to achieve a more comprehensive characterization of their features at different scales. This contrasts with the homogeneity that characterizes self-similar structures (please compare with Fig. 3(a)). As an illustrative example of this fact, we have performed the multiscale analysis of the normalized Brodatz texture labeled as D101 depicted in Fig. 7(a). Permutation quantifiers as a function of the embedding delay τ ($\tau_x = \tau_y = \tau$, $1 \leq \tau \leq 100$) for embedding dimensions $D_x = D_y = 2$ are plotted in Fig. 7(b). We noticed that the values estimated for both ordinal measures are strongly dependent on the spatial scale under which the image is analyzed. Furthermore, the underlying periodicity of the texture image is clearly reflected on the quantifiers' behaviors.

3.4. Experimental applications

To test the performance of the multiscale approach in a practical context, we include here the analysis of real images. Two high-resolution images from Mars, publicly available in the Photojournal interface to the Planetary Image Archive (PIA) (Courtesy NASA/JPL-Caltech), have been carefully studied. More precisely, we have selected images labeled as PIA18121 (Chevrons on a Flow Surface in Marte Vallis, 2880 x 1800 pixels) and PIA18624 (The Icy Surface of the North Polar Cap, 2880 x 1800 pixels). They are displayed in Fig. 8(a) and (b), respectively. Further details about them can be obtained at the following link: <http://photojournal.jpl.nasa.gov/>. Permutation quantifiers were estimated for different embedding delays ($\tau_x = \tau_y = \tau$ and $1 \leq \tau \leq 10$) with $D_x = D_y = 2$. Results obtained for the green channel of both images are shown in Fig. 8(c) and (d). Similar behaviors are found for the red and

blue channels. For the original spatial sampling scale ($\tau = 1$) these images have a similar texture according to the values estimated for \mathcal{H}_S and C_{JS} . However, their roughness properties can be distinguished for larger spatial scales since PIA18624 appears to be more random ($\mathcal{H}_S \rightarrow 1$ & $C_{JS} \rightarrow 0$) than PIA18121 for $\tau \geq 5$.

Another experimental application we have studied is related to liquid crystal. In particular, we investigated the isotropic–nematic–isotropic phase transition of a thin sample of a lyotropic liquid crystal. These transition can be visualized by looking at the texture patterns of the sample in a polarized light microscope as function of the temperature. Fig. 9(a) shows three examples of these textures for three different temperatures. It is very clear that the isotropic phases are characterized by a noisy texture; on the other hand, the nematic phase displays a more complex pattern. The textures analyzed here are the same we have previously investigated in Ref. [13]. The values of \mathcal{H}_S and C_{JS} were calculated considering $D_x = D_y = 2$ and the embedding delays $\tau_x = 2$ and $\tau_y = 1$ as well as the $\tau_x = 1$ and $\tau_y = 2$ (that is, the rotated version); also, we have considered the average value of the pixels of the three layers (RGB) of the original images. As shown in Fig. 9(b) and (c), the permutation quantifiers are able to identify the transitions from isotropic to nematic and from nematic to isotropic, a feature that is actually not surprising due to the very distinct patterns of the textures in these mesophases. Intriguingly, we observe that the values of \mathcal{H}_S in the isotropic phases for $\tau_x = 1$ and $\tau_y = 2$ are systematically smaller than the values obtained for $\tau_x = 2$ and $\tau_y = 1$. Reciprocally, values of C_{JS} are larger for $\tau_x = 1$ and $\tau_y = 2$ than for $\tau_x = 2$ and $\tau_y = 1$. Thus, these results suggest that there are more ordered structures along the y direction, which matches the axis of the elongated capillary tube where the sample was placed. Because of this coincidence, it is very hard to not infer that this “additional” order is caused by a surface effect acting on liquid crystal molecules. It is well known that, despite of the isotropic phase been macroscopically homogeneous, locally (on a short distance

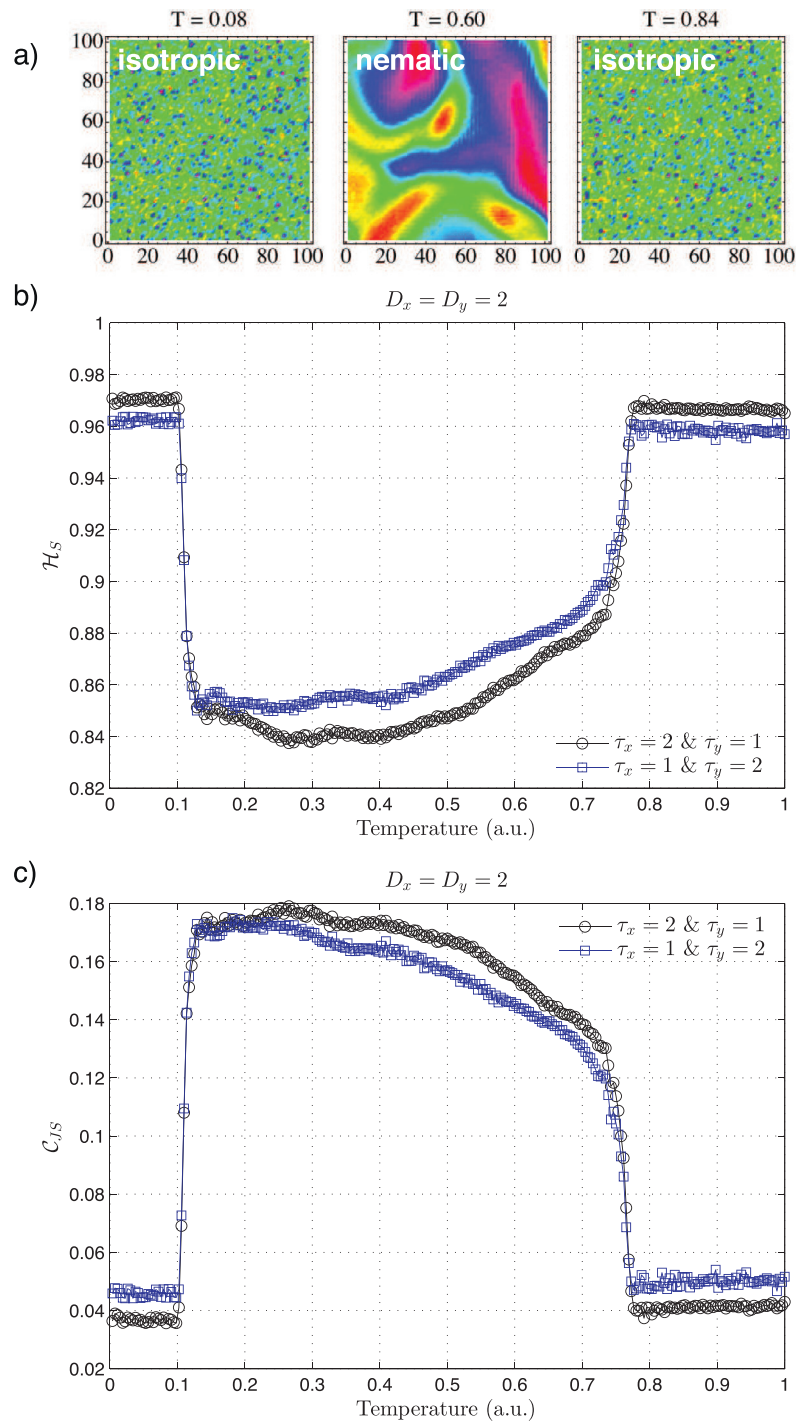


Fig. 9. (a) Examples of textures of a lyotropic liquid crystal in the (reentrant) isotropic, nematic and isotropic phases. Estimated values for (b) \mathcal{H}_S and (c) C_{JS} as a function of the temperature with embedding dimensions $D_x = D_y = 2$ and embedding delays $\tau_x = 2$ and $\tau_y = 1$ as well as $\tau_x = 1$ and $\tau_y = 2$. (For interpretation of the references to color in this figure legend, the reader is referred to the web version of this article.)

scale) nematic-like order exists and can be caused by a surface effect [44]. Here, despite the lack of more experimental evidence, we believe that our multiscale generalization may be employed as a very simple tool for identifying local order in isotropic phases, a task that is usually more tricky [44].

4. Conclusions

In this study, we address the problem of the identification and characterization of spatial correlations in two-dimensional patterns. The proposed multiscale 2D CECP provides a feasible alter-

native for the quantitative characterization and discrimination of two-dimensional structures at different spatial scales from a novel, information-theory, perspective. It could complement the information extracted from more traditional tools. Taking into account the key role played by texture analysis in the image processing from a wide number of significant applications, including remote sensing, assisted medical diagnosis, and automatic target recognition, we consider that this multiscale symbolic approach can be of potential interest and utility to researchers working in these fields. Moreover, thanks to its robustness to noise, the multiscale 2D CECP seems to be especially suited for the analysis of exper-

imental images. In particular, we conjecture that this methodology could be successfully applied in the digital image encryption field to objectively quantify the efficiency of different image encryption schemes. We are planning to address this hypothesis in a future study. The possibility to replace the original quantifiers, namely permutation entropy and permutation statistical complexity, by other alternatives, such as the cluster entropy [45,46], looking for potential improvements could be another avenue of research for the future.

Acknowledgements

LZ acknowledges Consejo Nacional de Investigaciones Científicas y Técnicas (CONICET), Argentina and Universidad Nacional de La Plata, Argentina (Incentive Project 11/I170) for their financial support. HVR thanks the financial support of the CNPq under Grant No. 440650/2014-3.

References

- [1] Feldman DP, Crutchfield JP. Structural information in two-dimensional patterns: entropy convergence and excess entropy. *Phys Rev E* 2003;67(5):051104.
- [2] Andrienko YA, Brilliantov NV, Kurths J. Complexity of two-dimensional patterns. *Eur Phys J B* 2000;15(3):539–46.
- [3] Cai Z, Shen E, Gu F, Xu Z, Ruan J, Cao Y. A new two-dimensional complexity measure. *Int J Bifurcation Chaos* 2006;16(11):3235–47.
- [4] Kaplan LM, Kuo C-CJ. Texture roughness analysis and synthesis via extended self-similar (ESS) model. *IEEE Trans Pattern Anal Machine Intell* 1995;17(11):1043–56.
- [5] Kaplan LM. Extended fractal analysis for texture classification and segmentation. *IEEE Trans Image Processing* 1999;8(11):1572–85.
- [6] Alvarez-Ramirez J, Rodriguez E, Cervantes I, Echeverria JC. Scaling properties of image textures: a detrending fluctuation analysis approach. *Phys A* 2006;361(2):677–98.
- [7] Gu G-F, Zhou W-X. Detrended fluctuation analysis for fractals and multifractals in higher dimensions. *Phys Rev E* 2006;74(6):061104.
- [8] Carbone A. Algorithm to estimate the Hurst exponent of high-dimensional fractals. *Phys Rev E* 2007;76(5):056703.
- [9] Mandelbrot BB. *The fractal geometry of nature*. W.H. Freeman and Company; 1982.
- [10] Wang F, Li J-W, Shi W, Liao G-P. Leaf image segmentation method based on multifractal detrended fluctuation analysis. *J Appl Phys* 2013;114(21):214905.
- [11] Valdiviezo-N JC, Castro R, Cristóbal G, Carbone A. Hurst exponent for fractal characterization of LANDSAT images. *SPIE Proc* 2014;9221:922103.
- [12] Vargas-Olmos C, Murguía JS, Ramírez-Torres MT, Mejía Carlos M, Rosu HC, González-Aguilar H. Two-dimensional DFA scaling analysis applied to encrypted images. *Int J Mod Phys C* 2015;26(8):1550093.
- [13] Ribeiro HV, Zunino L, Lenzi EK, Santoro PA, Mendes RS. Complexity-entropy causality plane as a complexity measure for two-dimensional patterns. *PLoS ONE* 2012a;7(8):e40689.
- [14] Bandt C, Pompe B. Permutation entropy: a natural complexity measure for time series. *Phys Rev Lett* 2002;88(17):174102.
- [15] Rosso OA, Larrondo HA, Martin MT, Plastino A, Fuentes MA. Distinguishing noise from chaos. *Phys Rev Lett* 2007;99(15):154102.
- [16] Feldman DP, Crutchfield JP. Measures of statistical complexity: why? *Phys Lett A* 1998;238(4–5):244–52.
- [17] Lange H, Rosso OA, Hauhs M. Ordinal pattern and statistical complexity analysis of daily stream flow time series. *Eur Phys J Special Topics* 2013;222(2):535–52.
- [18] Wackerbauer R, Witt A, Atmanspacher H, Kurths J, Scheingraber H. A comparative classification of complexity measures. *Chaos Soliton Fract* 1994;4(1):133–73.
- [19] Lamberti PW, Martin MT, Plastino A, Rosso OA. Intensive entropic non-triviality measure. *Phys A* 2004;334(1–2):119–31.
- [20] López-Ruiz R, Mancini HL, Calbet X. A statistical measure of complexity. *Phys Lett A* 1995;209(5–6):321–6.
- [21] Lin J. Divergence measures based on the Shannon entropy. *IEEE Trans Inf Theory* 1991;37(1):145–51.
- [22] Grosse I, Bernaola-Galván P, Carpena P, Román-Roldán R, Oliver J, Stanley HE. Analysis of symbolic sequences using the Jensen-Shannon divergence. *Phys Rev E* 2002;65(4):041905.
- [23] Martin MT, Plastino A, Rosso OA. Generalized statistical complexity measures: geometrical and analytical properties. *Phys A* 2006;369(2):439–62.
- [24] Zunino L, Soriano MC, Rosso OA. Distinguishing chaotic and stochastic dynamics from time series by using a multiscale symbolic approach. *Phys Rev E* 2012a;86(4):046210.
- [25] Rosso OA, Craig H, Moscato P. Shakespeare and other English Renaissance authors as characterized by Information Theory complexity quantifiers. *Phys A* 2009;388(6):916–26.
- [26] Zunino L, Zanin M, Tabak BM, Pérez DG, Rosso OA. Complexity-entropy causality plane: a useful approach to quantify the stock market inefficiency. *Phys A* 2010;389(9):1891–901.
- [27] Zunino L, Tabak BM, Serinaldi F, Zanin M, Pérez DG, Rosso OA. Commodity predictability analysis with a permutation information theory approach. *Phys A* 2011;390(5):876–90.
- [28] Zunino L, Bariviera AF, Guercio MB, Martínez LB, Rosso OA. On the efficiency of sovereign bond markets. *Phys* 2012b;391(18):4342–9.
- [29] Bariviera AF, Zunino L, Guercio MB, Martínez LB, Rosso OA. Efficiency and credit ratings: a permutation-information-theory analysis. *J Stat Mech* 2013:P08007.
- [30] Ribeiro HV, Zunino L, Mendes RS, Lenzi EK. Complexity-entropy causality plane: a useful approach for distinguishing songs. *Phys A* 2012b;391(7):2421–8.
- [31] Lovullo M, Telesca L. Complexity measures and information planes of x-ray astrophysical sources. *J Stat Mech* 2011:P03029.
- [32] Serinaldi F, Zunino L, Rosso OA. Complexity-entropy analysis of daily stream flow time series in the continental United States. *Stoch Environ Res Risk Assessment* 2014;28(7):1685–708.
- [33] Montani F, Rosso OA. Entropy-complexity characterization of brain development in chickens. *Entropy* 2014;16(8):4677–92.
- [34] Li Q, Zuntao F. Permutation entropy and statistical complexity quantifier of nonstationarity effect in the vertical velocity records. *Phys Rev E* 2014;89(1):012905.
- [35] Weck PJ, Schaffner DA, Brown MR, Wicks RT. Permutation entropy and statistical complexity analysis of turbulence in laboratory plasmas and the solar wind. *Phys Rev E* 2015;91(2):023101.
- [36] Safia A, He D-C. New Brodatz-based image databases for grayscale color and multiband texture analysis. *ISRN Mach Vis* 2013;2013:876386.
- [37] Brodatz P. *Textures: a photographic album for artist & designers*. New York, USA: Dover; 1966.
- [38] Sarkar N, Chaudhuri BB. Multifractal and generalized dimensions of gray-tone digital images. *Signal Proc* 1995;42(2):181–90.
- [39] Lee W-L, Hsieh K-S. A robust algorithm for the fractal dimension of images and its applications to the classification of natural images and ultrasonic liver images. *Signal Proc* 2010;90(6):1894–904.
- [40] Florindo JB, Bruno OM. Fractal descriptors based on Fourier spectrum applied to texture analysis. *Phys A* 2012;391(20):4909–22.
- [41] Gonçalves WN, Machado BB, Bruno OM. Texture descriptor combining fractal dimension and artificial crawlers. *Physica* 2014;395:358–70.
- [42] da Silva Oliveira MW, da Silva NR, Manzanera A, Bruno OM. Feature extraction on local jet space for texture classification. *Phys A* 2015;439:160–70.
- [43] Davarzani R, Mozaffari S, Yaghmaie K. Scale- and rotation-invariant texture description with improved local binary pattern features. *Signal Proc* 2015;111:274–93.
- [44] Khoo I-C. *Liquid crystals*. 2 ed. Wiley Series in pure and applied optics; 2007.
- [45] Carbone A, Stanley HE. Scaling properties and entropy of long-range correlated time series. *Phys A* 2004;384(1):21–4.
- [46] Carbone A. Information measure for long-range correlated sequences: The case of the 24 human chromosomes. *Sci Rep* 2013;3:2721.