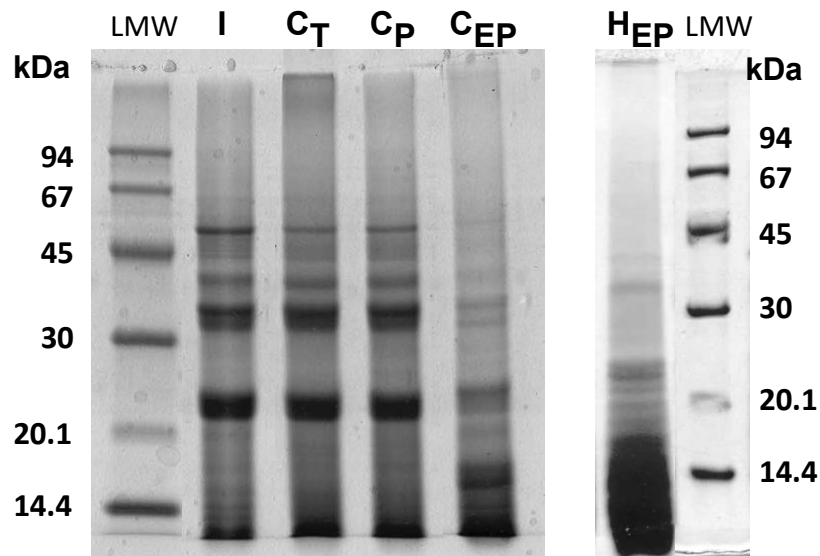


## ESM 1



**ESM 1.** Electrophoresis SDS-PAGE in presence of 2-ME of amaranth protein isolate (I) at pH 7, and the corresponding treated samples C<sub>T</sub> (amaranth isolate heated 10 min at 90 °C followed by treatment for 3 h at pH 2), C<sub>P</sub> (amaranth isolate treated 3 h at pH 2 in the presence of pepstatine A), C<sub>EP</sub> (amaranth isolate treated 3 h at pH 2), and H<sub>EP</sub> (amaranth isolate treated for 16 h at pH 2 and 40 °C). LMW: standards low molecular weight.