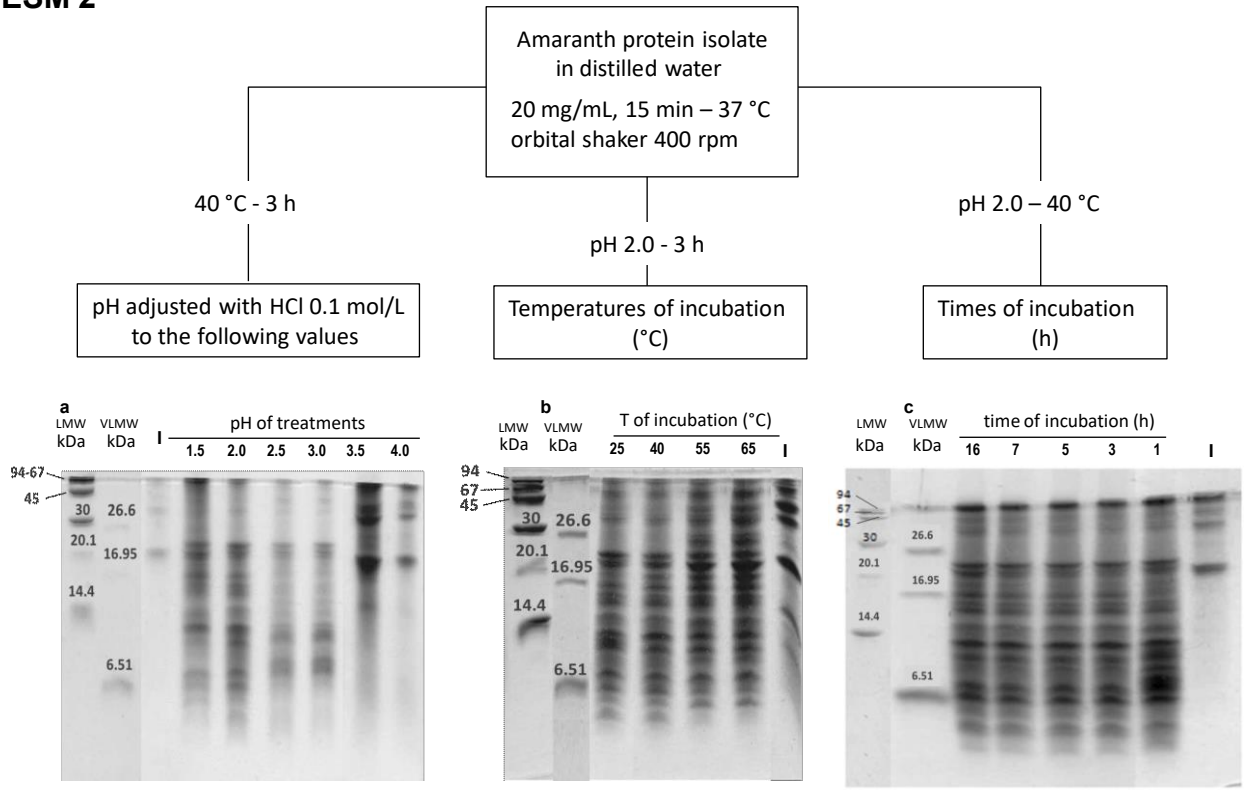


ESM 2



ESM 2. Electrophoresis Tricine SDS-PAGE in presence of 2-ME of amaranth protein isolate (I) at pH 7. a. Isolate treated at different pHs during 3 h at room temperature. b. Isolate treated at pH 2 during 3 h at different incubation temperatures. c. Isolate treated at pH 2 at room temperature during 1 to 16 hours. Variables are indicated in each line. LMW (standards low molecular weight): phosphorylase-b (94 kDa); bovine serum albumin (67 kDa); ovalbumin (43 kDa); carbonic anhydrase (30 kDa); trypsin inhibitor (20.1 kDa); α -lactalbumin (14.4 kDa) from GE Healthcare. VLMW (standards very low molecular weight): triose-phosphate isomerase (26.6 kDa); myoglobin (16.95 kDa); α -lactalbumin (14.43 kDa); aprotinin (6.51 kDa) from Bio-Rad.