

Molecular and mycotoxin characterization of *Fusarium graminearum* isolates obtained from wheat at a single field in Argentina

Leonel M. Ortega¹ · María I. Dinolfo² · Andrea L. Astoreca¹ · Enrique J. Alberione⁴ · Sebastián A. Stenglein^{2,3} · Teresa M. Alconada¹

Received: 15 October 2015 / Revised: 20 November 2015 / Accepted: 24 November 2015 / Published online: 5 December 2015
© German Mycological Society and Springer-Verlag Berlin Heidelberg 2015

Abstract *Fusarium graminearum* is the primary causal agent of Fusarium head blight of wheat in Argentina. This disease affects yield losses and quality of grains, reducing the wheat end-use, also causing mycotoxin contamination. In this study, the genetic variability and deoxynivalenol (DON) potential/production of *F. graminearum sensu stricto* (*s.s.*) isolates obtained from wheat samples of the 2009, 2010, and 2011 growing seasons from a single location in Argentina were evaluated. The genetic variability detected using inter-simple sequence repeat (ISSR) was analyzed in relation to the in vitro deoxynivalenol production, the main monitored and quantified mycotoxin according to the current regulations for the international marketing of cereals. Of the 68 *F. graminearum s.s.* isolates obtained in this study, 95 % showed a different

banding pattern with ISSR molecular markers and a high variability was detected within the population. However, no clustering was found in relation with year or DON production. All isolates amplify for the DON-related gene and a high variability in DON production was observed among the isolates, with production values between non-producers and 1741 µg/g. The results suggest that the *F. graminearum s.s.* population varies significantly in both genetic structure and toxin production in a limited sampled area.

Keywords *Fusarium graminearum* · Wheat · Genetic variability · Deoxynivalenol

Section Editor: Marc Stadler

✉ Teresa M. Alconada
alconada@biotec.quimica.unlp.edu.ar

¹ Facultad de Ciencias Exactas, Centro de Investigación y Desarrollo en Fermentaciones Industriales (CINDEFI), Universidad Nacional de La Plata (UNLP); CCT-La Plata, CONICET, Calle 47 y 115, B1900ASH La Plata, Argentina

² Laboratorio de Biología Funcional y Biotecnología (BIOLAB)-CICBA-INBIOTEC-CONICET, Facultad de Agronomía de Azul, Universidad Nacional del Centro de la Provincia de Buenos Aires (UNCPBA), Av. República de Italia N° 780, 7300 Azul, Buenos Aires, Argentina

³ Cátedra de Microbiología, Facultad de Agronomía de Azul, Universidad Nacional del Centro de la Provincia de Buenos Aires (UNCPBA), Av. República de Italia N° 780, 7300 Azul, Buenos Aires, Argentina

⁴ Patología Vegetal del Cultivo de Trigo, Instituto Nacional de Tecnología Agropecuaria (INTA), Ruta 12, km 3, 2580 Marcos Juárez, Córdoba, Argentina

Introduction

Latin American countries in general and mainly Brazil and Argentina are important wheat producers in the world, with Argentina being among one of the major wheat exporters (Calzada 2014; Reynoso et al. 2011). Fusarium head blight (FHB) is one of the most severe fungal diseases affecting wheat crops worldwide, including those in Argentina (Galich 1996; Lori et al. 2003). Many members of the *Fusarium graminearum* species complex (FGSC) are associated to this disease, with *Fusarium graminearum sensu stricto* (*s.s.*) being the main causal pathogen reported in Argentina (Alvarez et al. 2011; Castañares et al. 2014; Ramirez et al. 2007; Sampietro et al. 2010). In this complex, 16 different phylogenetically species have been recognized (Aoki et al. 2012; Sarver et al. 2011). FHB directly affects yield losses and quality of grains, reducing the wheat end-use, also causing mycotoxin contamination (Matny 2015). At least 20 FHB epidemics of wheat have been registered in the last 50 years in Argentina, with variable intensity (Kikot et al. 2011; Malbrán et al. 2012; Moschini and Fortugno 1996).

Even though different strategies have aimed to control the effects of the disease, such as chemical control (Lechoczki-Krsjak et al. 2008), biological control (Mourellos et al. 2014; Zhao et al. 2014), and the development of resistant cultivars (Cainong et al. 2015), satisfactory levels of control have not yet been attained. It is noteworthy that knowledge of the genetic variability of this pathogen is relevant to understand its epidemiology and evolutionary potential, which provides useful information to control and reduce the devastating effects of the disease (Zeller et al. 2003).

Several molecular techniques have been used to analyze *F. graminearum* isolates and to provide information about the population structure worldwide, such as amplified fragment length polymorphism (AFLP), restriction fragment length polymorphism (RFLP), random amplified polymorphic DNA (RAPD), variable number tandem repeat (VNTR), and inter-simple sequence repeat (ISSR) (Karugia et al. 2009; Leslie et al. 2007; Llorens et al. 2006). The population structure of *Fusarium* species in South America is poorly understood compared to other production regions. The studies recorded in Argentina regarding genetic variability among *F. graminearum* s.s. isolates have been based mainly on AFLP molecular markers (Alvarez et al. 2011; Ramirez et al. 2007). The analysis based on ISSR-polymerase chain reaction (PCR) molecular markers is considered a reliable methodology in population genetic studies of fungi, in which the selection of ISSR primers does not require previous knowledge of the sequence and generates specific and reproducible patterns due to the highly stringent conditions of the reaction (Mishra et al. 2003).

The mycotoxins most associated with members of the FGSC are deoxynivalenol (DON) and nivalenol (NIV), which have several adverse effects on animal and human health, such as gastrointestinal disorders and severe depression of the immune system, promoting the development of secondary infections (Pestka 2007; Pestka and Smolinski 2005). In South America, the main mycotoxin is DON, belonging to type B trichothecenes, whose presence is monitored and quantified due to current regulations for the international marketing of cereals (Astolfi et al. 2012; Castañares et al. 2014; Umpiérrez-Failache et al. 2013). In our country, the DON genotype/chemotype seems to be predominant in the wheat-cropping area (Alvarez et al. 2009; Malbrán et al. 2014; Ramirez et al. 2007).

Different studies on genetic variability and/or mycotoxin capacity at the genome level/in vitro production of *F. graminearum* s.s. have been carried out (Alvarez et al. 2009; Astolfi et al. 2012; Ramirez et al. 2007). However, the majority of them were conducted to reflect the genetic or mycotoxin variability among different wheat cultivated areas in a region or in a country, and little is known about the variability in a small and single wheat production area (Karugia et al. 2009). The purpose of this work was to analyze the

genetic variability and both DON potential (genetic level) and in vitro production among *F. graminearum* s.s. isolates obtained from a single field.

Materials and methods

Biological materials

Thirty-three wheat samples (50 g each) obtained during the 2009, 2010, and 2011 wheat growing seasons were harvested and threshed manually. The samples belong to the national wheat breeding program, in an experimental field of 1 ha of Marcos Juárez-INTA (32°42'S; 62°06'W), province of Córdoba, Argentina, which is one of the most important producer and often studied areas of wheat cultivars in the country. Conventional tillage operations according to standard production practices on fields, in an Argiudol soil, were made.

Isolation of *F. graminearum*

For *F. graminearum* isolation, 60 grains per wheat sample were surface-sterilized with 10 % v/v sodium hypochlorite solution and plated onto Petri dishes containing wet filter paper in darkness at 25 °C for 7 days. Grains that showed fungal presence were transferred to potato dextrose agar (PDA) medium. Mycelium was subcultured on Spezieller Nährstoffarmer agar (SNA) medium for 15 days and then conidium suspension was transferred to water agar (WA) medium for 16 h. A single conidia was picked and transferred to PDA. Identification was carried out by cultural characterization on PDA and carnation leaf agar (CLA) by means of the keys of Gerlach and Nirenberg (1982), Burgess et al. (1994), and Leslie and Summerell (2006).

Molecular characterization

Molecular identification and potential production of DON

Total genomic DNA from presumable *F. graminearum* isolates was extracted using the cetyltrimethylammonium bromide (CTAB) method (Stenglein and Balatti 2006) and DNA concentrations were calculated using a NanoDrop 2000 UV-vis spectrophotometer (Thermo Fisher Scientific, Waltham, MA, USA). To confirm morphological identifications, an *F. graminearum*-specific PCR assay was performed for the isolates using primers Fg16F and Fg16R, according to Nicholson et al. (1998). These primers are not completely specific to *F. graminearum* s.s., but they give products of different size. *Fusarium graminearum* s.s. (Castañares et al. 2014, used as control) gives a product of about 400 bp, while *F. asiaticum* (NRRL 13818, used as control) gives a PCR product of about 550 bp, *F. meridionale* (NRRL 28436, used

as control) gives a product of about 500 bp, and no amplification was expected for *F. boothii* (NRRL 26916, used as control), according to Waalwijk et al. (2003). Mugrabi de Kuppler et al. (2011). Castañares et al. (2014, 2015). and Covarelli et al. (2015). The species used as a control were selected according to their presence in South America (van der Lee et al. 2015). DON genotype determination was conducted by amplifying a portion of the *Tri13* gene (Chandler et al. 2003). *Fusarium poae* and *F. pseudograminearum* DNA were used as negative controls for the specific PCR reactions.

ISSR markers

The ISSR-PCR was performed using five ISSR primers: Biolab H [(GCC)₅], Biolab D [(AG)₈], Biolab F [CT(GA)₈], Biolab J [(CAC)₅], and Biolab E [CTC(GT)₈]. PCRs were performed in an XP Thermal Cycler (Hangzhou Bioer Technology Co., Ltd., Hangzhou, China), according to Dinolfo et al. (2010). Cluster analysis based on the Dice coefficient was realized on the similarity matrix employing the unweighted pair group method with arithmetic mean (UPGMA) algorithm (Sneath and Sokal 1973). NTSYSpc version 2.1 was used for the analysis (Rohlf 1998). An analysis of molecular variance (AMOVA) was realized using Arlequin 2000 software (Schneider et al. 2000). DNA from a *F. pseudograminearum* isolate was used as the outgroup (Castañares et al. 2013).

DON production

Sample preparation

DON analyses were carried out following the methodology proposed by Cooney et al. (2001). with some modifications. Wheat grains were irradiated with 10–12 kGrays of gamma irradiation. Water activity (a_w) was measured using an Aqualab Series 3 (Labcell Ltd., Basingstoke, Hants, UK) and then rehydrated to get a value of 0.995. The wheat grains were placed on Petri dishes forming a monolayer (20 g) and then inoculated with a 4-mm-diameter agar disk taken from the margin of a 7-day-old growing colony of each isolate on PDA and incubated at 28 °C. Cultures were carried out in triplicate. After 28 days of incubation, the samples were dried in a forced air oven and finely ground with a propeller grinder Arcano (Instrumental Pasteur, Buenos Aires, Argentina). Fifteen grams of each sample were mixed with 40 mL of acetonitrile:methanol (14:1) and shaken at high speed for 1 h. Then, an aliquot of 2 mL of each isolate was taken and added to a cleanup cartridge, containing a layer of glass wool and 500 mg of a mixture of alumina:carbon (20:1). DON was eluted from the cartridge with 500 μ L of acetonitrile:methanol:water (80:5:15), evaporated to dryness

under nitrogen gas and resuspended in methanol:water (95:5). Cultures with uninoculated grains were employed as controls.

HPLC conditions

DON detection and quantification was performed using high-performance liquid chromatography (HPLC, Waters 717 plus Autosampler) with a UV detector (220 nm) (Palazzini et al. 2007). The chromatographic separations were carried out on a C18 reverse phase column (250×4.6 mm, 5- μ m particle sizes, Waters). The mobile phase used a mixture of water:methanol (88:12) with a flow rate of 1.5 mL min⁻¹. Quantification was performed by measuring the peaks (Empower software; Waters Corporation, Milford, MA, USA) and extrapolation to a calibration curve was obtained using DON standard solutions of 1–5 μ g mL⁻¹ in methanol:water (5:95) (Sigma Aldrich Co., St. Louis, MO, USA; purity >99 %). The purity of the peak was determined by performing a spectral homogeneity test with the same software. This test showed values of limit of detection (LOD)=0.15 μ g/g, limit of quantification (LOQ)=0.50 μ g/g, and recovery percentage of 96 %. In order to analyze the results, the isolates were divided into four DON production levels: not detectable (ND), low producers (lower than 50 μ g/g), medium producers (50–150 μ g/g), and high producers (higher than 150 μ g/g).

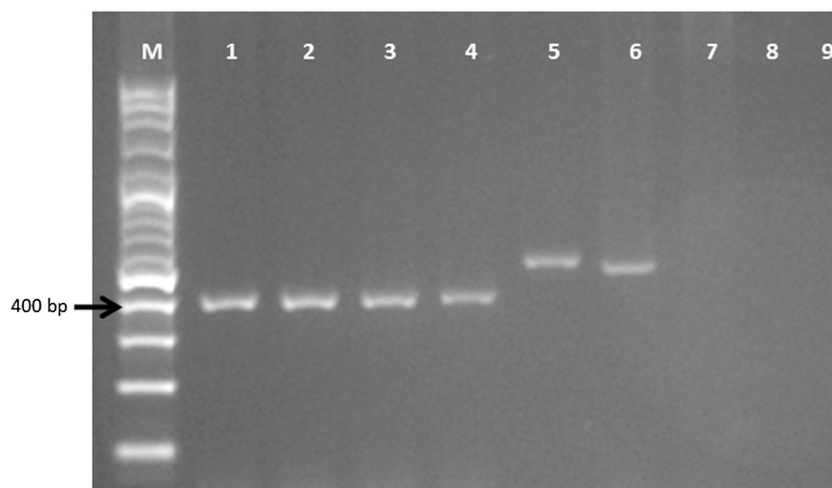
Results and discussion

Sixty-eight *Fusarium graminearum s.s.* isolates were obtained from 24 wheat samples, with amplified fragments of about 400 bp (Fig. 1). No *Fusarium graminearum s.s.* were obtained from the remaining nine wheat samples. Most *F. graminearum s.s.* isolates were obtained from the 2010 wheat growing season (66). Only one isolate from the 2009 and another from the 2011 wheat growing seasons were identified as *F. graminearum s.s.* Consequently, it became actually a point analysis on the *Fusarium* population at one site (Marcos Juárez) in 2010.

Higher percentages of the presence of *F. graminearum s.s.* were reported by other authors in Argentina. Ramirez et al. (2007) and Alvarez et al. (2011) found that 100 and 97 % of the isolates obtained from locations in the major wheat production area of Argentina were members of this species, respectively. Similar results were obtained in Uruguay by Pan et al. (2013). who identified all isolates obtained as *F. graminearum s.s.* Moreover, values closer to those observed in our research were reported for southern Brazil by Astolfi et al. (2012). which were near to 74 %.

The occurrence of FGSC members over time is strongly related to competition among them, according to the severity degree of FHB (Xu et al. 2007). Although different members of the FGSC can be found in much of the geographical area

Fig. 1 Amplification patterns. M: molecular marker; 1–4: *F. graminearum s.s.*; 5: *F. asiaticum*; 6: *F. meridionale*; 7: *F. boothii*; 8: *F. pseudograminearum*; 9: *F. poae*



affected by the disease, *F. graminearum s.s.* is the most dominant around the world (O'Donnell et al. 2000, 2004, 2008; van der Lee et al. 2015). Furthermore, the predominance of one species over another could be attributed to environmental conditions and/or host preference (Del Ponte et al. 2015; Osborne and Stein 2007; Xu et al. 2007, 2008).

At the moment, among FGSC species, only *F. graminearum s.s.* has been isolated from wheat grains in Argentina (Alvarez et al. 2011; Ramirez et al. 2007). However, different species of the complex were isolated from wheat in Uruguay and Brazil, where subtropical environmental conditions favor FGSC diversity (Astolfi et al. 2012; Umpiérrez-Failache et al. 2013).

The ISSR dendrogram defined 65 haplotypes (Fig. 2). The isolates were resolved into two clusters (I, II), with an average similarity among groups of 51 %. The *F. pseudograminearum* strain used as the control appeared alone in a third cluster (III). The isolates distribution in the dendrogram was dispersed, showing no clustering according to the origin of wheat or with DON production. The genetic variability determined by AMOVA showed that 99 % of the isolates are different. The use of molecular markers has also been demonstrated to be a useful tool in the analysis of genetic diversity in populations of *F. graminearum* in South America. In Argentina, Ramirez et al. (2007) and Alvarez et al. (2011) detected around of 98 and 100 % of genetic variability, respectively. In addition, Astolfi et al. (2012) showed 93 % of variability in south Brazil, although they used *F. graminearum s.s.* isolates from different sampled areas of wheat.

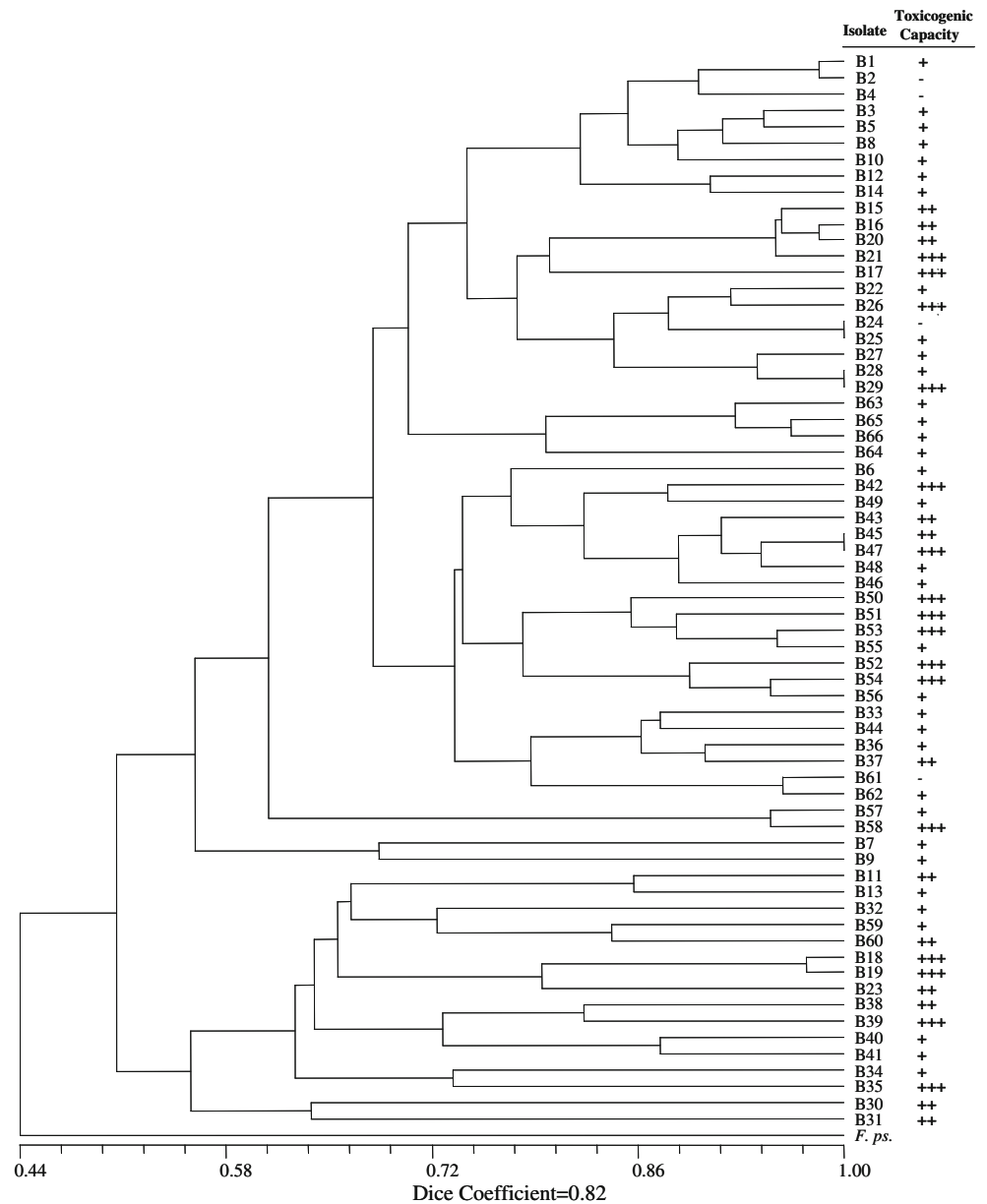
In general, variability studies for FGSC members have been conducted from several geographical locations (Alvarez et al. 2009, 2011; Boutigny et al. 2011, 2014; Qiu et al. 2014; Sampietro et al. 2010). By contrast, there are a scarce number of authors that have analyzed the genetic variability of the species among a limited number

of localities (Astolfi et al. 2012; Guo et al. 2008; Mishra et al. 2004; Ramirez et al. 2006b, 2007) or even at a single field location (Karugia et al. 2009). In such a case, as well as being observed in the present study, a high genetic variability can be found in a single geographical area. This variability could be attributed to several factors. Ramirez et al. (2007) suggested that a high level of genotypic diversity with relatively few clones is a consequence of frequent outcrosses, enough to maintain a great deal of genetic heterogeneity in the population, able to rapidly synthesize a multilocus response to change in selection pressures. In addition, the co-existence of different members of the FGSC provides a potential for hybridization and the formation of new genotypes that could affect pathogenicity, host range, or toxin production (Alvarez et al. 2011; Karugia et al. 2009). Furthermore, spores are easily transported among different locations, increasing diversity (Schmale et al. 2006).

Genotype analysis showed that all *F. graminearum s.s.* amplified the fragment of 282 bp corresponding to the *Tri13* gene involved in the DON trichothecene biosynthesis (Chandler et al. 2003). The determination of DON production showed significant differences among isolates ($p < 0.05$), observing values that ranged from not detectable (ND) to 1741 $\mu\text{g/g}$, demonstrating a high intraspecific variability in their toxin production profile, even for isolates coming from a single location. Four isolates (5.9 %) belonged to the ND group, 51.5 % from the low producers, 19.1 % from the medium producers, and 23.5 % from the high producers (Fig. 3). However, the predominant group belonged to values less than 50 $\mu\text{g/g}$, with these values being the most frequently reported (Alvarez et al. 2009; Palazzini et al. 2007; Ramirez et al. 2006a).

There are few studies that use wheat as a substrate to analyze DON production in vitro by *F. graminearum* (Hope et al.

Fig. 2 Dendrogram obtained by ISSR markers showing cluster grouping of the 66 *F. graminearum s.s.* isolates from the year 2010 plus *F. pseudograminearum* strain (*F. ps*) and the DON production. (-): Not detectable; (+): low producers; (++) medium producers; (+++): high producers



2005; Ramirez et al. 2006a, b). All these reports showed values of production $<10 \mu\text{g/g}$. At the genetic level, all isolates were potentially DON producers, similar to those reported previously by Burlakoti et al. (2011) and Castañares et al. (2014). Differences between molecular assays and in vitro production could be explained as PCR shows the capacity, at the genome level, to produce a specific toxin, whereas the production is dependent on the substrate and environmental conditions of the assay (Castañares et al. 2014; Somma et al. 2014).

Moreover, when Goswami and Kistler (2005) evaluated the variation in mycotoxin production and aggressiveness among isolates belonging to different species from the FGSC, they observed that the high level of variability for both characters

was specific to each of the isolates tested and independent of the species considered.

In conclusion, our results showed that, even at a single and small area, the population of *F. graminearum s.s.* presents a high variability in their genomic pool and DON production. This observed level of diversity could be considered as one of the causes behind the periodical emergence of this pathogen in different areas around the world. Furthermore, the high variability observed in the toxicogenic production could be considered as another indicator of this genetic diversity. This study reflects that continuous monitoring not only at the regional level, but also at the single field level, is needed in order to understand the *F. graminearum s.s.* population.

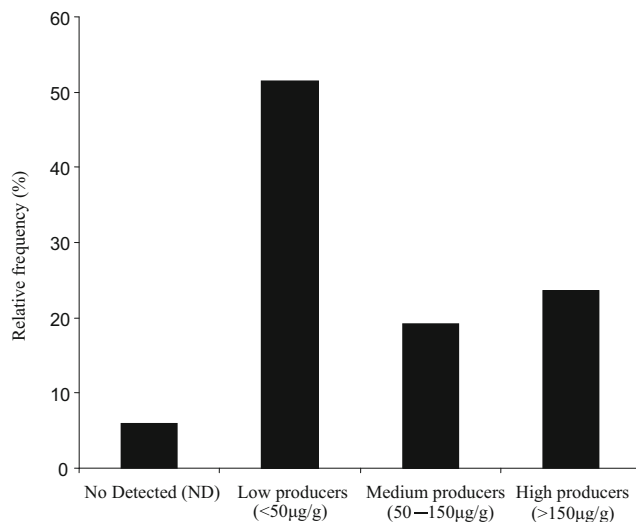


Fig. 3 Relative frequency of isolates distributed in each DON production range

Acknowledgments We thank Consejo Nacional de Investigaciones Científicas y Tecnológicas (grants PIP 0925 and PIP 0551) and FONCYT PICT PICT-2011-0851 and 030/2011 for financial support, and the technical assistance of Esteban González.

Compliance with ethical standards

Conflict of interest The authors declare no conflict of interest.

References

- Alvarez CL, Azcarate MP, Fernandez Pinto V (2009) Toxigenic potential of *Fusarium graminearum sensu stricto* isolates from wheat in Argentina. *Int J Food Microbiol* 135:131–135. doi:10.1016/j.ijfoodmicro.2009.07.037
- Alvarez CL, Somma S, Proctor RH, Stea G, Mulè G, Logrieco AF, Fernandez Pinto V, Moretti A (2011) Genetic diversity in *Fusarium graminearum* from a major wheat-producing region of Argentina. *Toxins (Basel)* 3:1294–1309. doi:10.3390/toxins3101294
- Aoki T, Ward TJ, Kistler HC, O'Donnell K (2012) Systematics, phylogeny and trichothecene mycotoxin potential of *Fusarium* head blight cereal pathogens. *Mycotoxins* 62:91–102
- Astolfi P, Reynoso MM, Ramirez ML, Chulze SN, Alves TCA, Tessmann DJ, Del Ponte EM (2012) Genetic population structure and trichothecene genotypes of *Fusarium graminearum* isolated from wheat in southern Brazil. *Plant Pathol* 61:289–295. doi:10.1111/j.1365-3059.2011.02515.x
- Boutigny AL, Ward TJ, Van Coller GJ, Flett B, Lamprecht SC, O'Donnell K, Viljoen A (2011) Analysis of the *Fusarium graminearum* species complex from wheat, barley and maize in South Africa provides evidence of species-specific differences in host preference. *Fungal Genet Biol* 48:914–920. doi:10.1016/j.fgb.2011.05.005
- Boutigny AL, Ward TJ, Ballois N, Iancu G, Ioos R (2014) Diversity of the *Fusarium graminearum* species complex on French cereals. *Eur J Plant Pathol* 138:133–148. doi:10.1007/s10658-013-0312-6
- Burgess LW, Summerell BA, Bullock S, Gott KP, Backhouse D (1994) Laboratory manual for *Fusarium* research, 3rd edn. University of Sydney, Sydney
- Burlakoti RR, Neate SM, Adhikari TB, Gyawali S, Salas B, Steffenson BJ, Schwarz PB (2011) Trichothecene profiling and population genetic analysis of *Gibberella zeae* from Barley in North Dakota and Minnesota. *Phytopathology* 101:687–695. doi:10.1094/PHYTO-04-10-0101
- Cainong JC, Bockus WW, Feng Y, Chen P, Qi L, Sehgal SK, Danilova TV, Koo DH, Friebe B, Gill BS (2015) Chromosome engineering, mapping, and transferring of resistance to *Fusarium* head blight disease from *Elymus tsukushiensis* into wheat. *Theor Appl Genet* 128:1019–1027. doi:10.1007/s00122-015-2485-1
- Calzada J (2014) Publicaciones: Informativo Semanal (N° 1687): Argentina y su posicionamiento en el mercado mundial de granos, aceites y subproductos. Bolsa de Comercio de Rosario. Available online at: http://www.bcr.com.ar/Publicaciones/Informativo%20semanal/bcr2014_12_05.pdf. Accessed 16 July 2015
- Castañares E, Dinolfo MI, Moreno MV, Berón C, Stenglein SA (2013) *Fusarium cerealis* associated with barley seeds in Argentina. *J Phytopathol* 161:586–589. doi:10.1111/jph.12097
- Castañares E, Ramirez Albuquerque D, Dinolfo MI, Fernandez Pinto V, Patriarca A, Stenglein SA (2014) Trichothecene genotypes and production profiles of *Fusarium graminearum* isolates obtained from barley cultivated in Argentina. *Int J Food Microbiol* 179:57–63. doi:10.1016/j.ijfoodmicro.2014.03.024
- Castañares E, Dinolfo MI, Del Pontec EM, Pan D, Stenglein SA (2015) Species composition and genetic structure of *Fusarium graminearum* species complex populations affecting the main barley growing regions of South America. *Plant Pathol*. Accepted for publication
- Chandler EA, Simpson DR, Thomsett MA, Nicholson P (2003) Development of PCR assays to Tri7 and Tri13 trichothecene biosynthetic genes, and characterisation of chemotypes of *Fusarium graminearum*, *Fusarium culmorum* and *Fusarium cerealis*. *Physiol Mol Plant Pathol* 62:355–367. doi:10.1016/S0885-5765(03)00092-4
- Cooney JM, Lauren DR, di Menna ME (2001) Impact of competitive fungi on trichothecene production by *Fusarium graminearum*. *J Agric Food Chem* 49:522–526. doi:10.1021/jf0006372
- Covarelli L, Beccari G, Prodi A, Generotti S, Etruschi F, Juan C, Ferrer E, Mañes J (2015) *Fusarium* species, chemotype characterisation and trichothecene contamination of durum and soft wheat in an area of central Italy. *J Sci Food Agric* 95:540–551. doi:10.1002/jsfa.6772
- Del Ponte EM, Spolti P, Ward TJ, Gomes LB, Nicolli CP, Kuhnem PR, Silva CN, Tessmann DJ (2015) Regional and field-specific factors affect the composition of fusarium head blight pathogens in subtropical no-till wheat agroecosystem of Brazil. *Phytopathology* 105:246–254. doi:10.1094/PHYTO-04-14-0102-R
- Dinolfo MI, Stenglein SA, Moreno MV, Nicholson P, Jennings P, Salemo GL (2010) ISSR markers detect high genetic variation among *Fusarium poae* isolates from Argentina and England. *Eur J Plant Pathol* 127:483–491. doi:10.1007/s10658-010-9613-1
- Galich MTV (1996) *Fusarium* head blight in Argentina. In: Dubin HJ, Gilchrist L, Reeves J, McNab A (eds) *Fusarium* head scab: global status and future prospects, 1st edn. Centro Internacional de Mejoramiento de Maíz y Trigo, México, pp 19–28
- Gerlach W, Nirenberg H (1982) The genus *Fusarium*—a pictorial atlas. *Mitt Biol Bundesanst Land Forstwirtschaft (Berlin-Dahlem)* 209:1–406
- Goswami RS, Kistler HC (2005) Pathogenicity and in planta mycotoxin accumulation among members of the *Fusarium graminearum* species complex on wheat and rice. *Phytopathology* 95:1397–1404. doi:10.1094/PHYTO-95-1397
- Guo XW, Fernando WGD, Seow-Brock HY (2008) Population structure, chemotype diversity, and potential chemotype shifting of *Fusarium*

- graminearum* in wheat fields of Manitoba. *Plant Dis* 92:756–762. doi:10.1094/PDIS-92-5-0756
- Hope R, Aldred D, Magan N (2005) Comparison of environmental profiles for growth and deoxynivalenol production by *Fusarium culmorum* and *F. graminearum* on wheat grain. *Lett Appl Microbiol* 40:295–300. doi:10.1111/j.1472-765X.2005.01674.x
- Karugia GW, Suga H, Gale LR, Nakajima T, Tomimura K, Hyakumachi M (2009) Population structure of the *Fusarium graminearum* species complex from a single Japanese wheat field sampled in two consecutive years. *Plant Dis* 93:170–174. doi:10.1094/PDIS-93-2-0170
- Kikot GE, Moschini R, Consolo VF, Rojo R, Salerno G, Hours RA, Gasoni L, Arambarri AM, Alconada TM (2011) Occurrence of different species of *Fusarium* from wheat in relation to disease levels predicted by a weather-based model in Argentina pampas region. *Mycopathologia* 171:139–149. doi:10.1007/s11046-010-9335-0
- Lechoczki-Krsjak S, Tóth B, Kótai C, Martonosi I, Farády L, Kondrák L, Szabó-Hevér A, Mesterházy A (2008) Chemical control of fhb in wheat with different nozzle types and fungicides. *Cereal Res Commun* 36:677–681. doi:10.1556/CRC.36.2008.Suppl.B.59
- Leslie JF, Summerell BA (2006) *The Fusarium laboratory manual*. Blackwell Publishing, Ames
- Leslie JF, Anderson LL, Bowden RL, Lee YW (2007) Inter- and intra-specific genetic variation in *Fusarium*. *Int J Food Microbiol* 119:25–32. doi:10.1016/j.ijfoodmicro.2007.07.059
- Llorens A, Hinojo MJ, Mateo R, González-Jaén MT, Valle-Algarra FM, Logrieco A, Jiménez M (2006) Characterization of *Fusarium* spp. isolates by PCR-RFLP analysis of the intergenic spacer region of the rRNA gene (rDNA). *Int J Food Microbiol* 106:297–306. doi:10.1016/j.ijfoodmicro.2005.09.005
- Lori GA, Sisterna MN, Haidukowski M, Rizzo I (2003) *Fusarium graminearum* and deoxynivalenol contamination in the durum wheat area of Argentina. *Microbiol Res* 158:29–35. doi:10.1078/0944-5013-00173
- Malbrán I, Mourellos CA, Girotti JR, Alicino MB, Balatti PA, Lori GA (2012) Aggressiveness variation of *Fusarium graminearum* isolates from Argentina following point inoculation of field grown wheat spikes. *Crop Prot* 42:234–243. doi:10.1016/j.cropro.2012.05.025
- Malbrán I, Mourellos CA, Girotti JR, Balatti PA, Lori GA (2014) Toxicogenic capacity and trichothecene production by *Fusarium graminearum* isolates from Argentina and their relationship with aggressiveness and fungal expansion in the wheat spike. *Phytopathology* 104:357–364. doi:10.1094/PHYTO-06-13-0172-R
- Matny ON (2015) *Fusarium* head blight and crown rot on wheat & barley: losses and health risks. *Adv Plants Agric Res* 2:00039. doi:10.15406/apar.2015.02.00039
- Mishra PK, Fox RTV, Culham A (2003) Inter-simple sequence repeat and aggressiveness analyses revealed high genetic diversity, recombination and long-range dispersal in *Fusarium culmorum*. *Ann Appl Biol* 143:291–301. doi:10.1111/j.1744-7348.2003.tb00297.x
- Mishra PK, Tewari JP, Clear RM, Turkington TK (2004) Molecular genetic variation and geographical structuring in *Fusarium graminearum*. *Ann Appl Biol* 145:299–307. doi:10.1111/j.1744-7348.2004.tb00387.x
- Moschini RC, Fortugno C (1996) Predicting wheat head blight incidence using models based on meteorological factors in Pergamino, Argentina. *Eur J Plant Pathol* 102:211–218. doi:10.1007/BF01877959
- Mourellos CA, Malbrán I, Balatti PA, Ghiringhelli PD, Lori GA (2014) Gramineous and non-gramineous weed species as alternative hosts of *Fusarium graminearum*, causal agent of *Fusarium* head blight of wheat, in Argentina. *Crop Prot* 65:100–104. doi:10.1016/j.cropro.2014.07.013
- Mugrabi de Kuppler AL, Steiner U, Sulyok M, Krska R, Oerke EC (2011) Genotyping and phenotyping of *Fusarium graminearum* isolates from Germany related to their mycotoxin biosynthesis. *Int J Food Microbiol* 151:78–86. doi:10.1016/j.ijfoodmicro.2011.08.006
- Nicholson P, Simpson DR, Weston G, Rezanoor HN, Lees AK, Parry DW, Joyce D (1998) Detection and quantification of *Fusarium culmorum* and *Fusarium graminearum* in cereals using PCR assays. *Physiol Mol Plant Pathol* 53:17–37. doi:10.1006/pmpp.1998.0170
- O'Donnell K, Kistler HC, Tacke BK, Casper HH (2000) Gene genealogies reveal global phylogeographic structure and reproductive isolation among lineages of *Fusarium graminearum*, the fungus causing wheat scab. *Proc Natl Acad Sci U S A* 97:7905–7910. doi:10.1073/pnas.130193297
- O'Donnell K, Ward TJ, Geiser DM, Corby Kistler H, Aoki T (2004) Genealogical concordance between the mating type locus and seven other nuclear genes supports formal recognition of nine phylogenetically distinct species within the *Fusarium graminearum* clade. *Fungal Genet Biol* 41:600–623. doi:10.1016/j.fgb.2004.03.003
- O'Donnell K, Ward TJ, Aberra D, Kistler HC, Aoki T, Orwig N, Kimura M, Bjørnstad Å, Klemsdal SS (2008) Multilocus genotyping and molecular phylogenetics resolve a novel head blight pathogen within the *Fusarium graminearum* species complex from Ethiopia. *Fungal Genet Biol* 45:1514–1522. doi:10.1016/j.fgb.2008.09.002
- Osborne LE, Stein JM (2007) Epidemiology of *Fusarium* head blight on small-grain cereals. *Int J Food Microbiol* 119:103–108. doi:10.1016/j.ijfoodmicro.2007.07.032
- Palazzini JM, Ramirez ML, Torres AM, Chulze SN (2007) Potential biocontrol agents for *Fusarium* head blight and deoxynivalenol production in wheat. *Crop Prot* 26:1702–1710. doi:10.1016/j.cropro.2007.03.004
- Pan D, Calero N, Mionetto A, Bettucci L (2013) Trichothecene genotypes of *Fusarium graminearum* from wheat in Uruguay. *Int J Food Microbiol* 162:120–123. doi:10.1016/j.ijfoodmicro.2013.01.002
- Pestka JJ (2007) Deoxynivalenol: toxicity, mechanisms and animal health risks. *Anim Feed Sci Technol* 137:283–298. doi:10.1016/j.anifeedsci.2007.06.006
- Pestka JJ, Smolinski AT (2005) Deoxynivalenol: toxicology and potential effects on humans. *J Toxicol Environ Health B Crit Rev* 8:39–69. doi:10.1080/10937400590889458
- Qiu J, Xu J, Shi J (2014) Molecular characterization of the *Fusarium graminearum* species complex in Eastern China. *Eur J Plant Pathol* 139:811–823. doi:10.1007/s10658-014-0435-4
- Ramirez ML, Chulze S, Magan N (2006a) Temperature and water activity effects on growth and temporal deoxynivalenol production by two Argentinean strains of *Fusarium graminearum* on irradiated wheat grain. *Int J Food Microbiol* 106:291–296. doi:10.1016/j.ijfoodmicro.2005.09.004
- Ramirez ML, Reynoso MM, Farnochi MC, Chulze S (2006b) Vegetative compatibility and mycotoxin chemotypes among *Fusarium graminearum* (*Gibberella zeae*) isolates from wheat in Argentina. *Eur J Plant Pathol* 115:139–148. doi:10.1007/s10658-006-0009-1
- Ramirez ML, Reynoso MM, Farnochi MC, Torres AM, Leslie JF, Chulze SN (2007) Population genetic structure of *Gibberella zeae* isolated from wheat in Argentina. *Food Addit Contam* 24:1115–1120. doi:10.1080/02652030701546487
- Reynoso MM, Ramirez ML, Torres AM, Chulze SN (2011) Trichothecene genotypes and chemotypes in *Fusarium graminearum* strains isolated from wheat in Argentina. *Int J Food Microbiol* 145:444–448. doi:10.1016/j.ijfoodmicro.2011.01.020
- Rohlf FJ (1998) NTSYSpc. Numerical taxonomy and multivariate analysis system, version 2.0. Applied Biostatistics, Exeter Software, New York
- Sampietro DA, Marín P, Iglesias J, Presello DA, Vattuone MA, Catalan CAN, Gonzalez Jaen MT (2010) A molecular based strategy for rapid diagnosis of toxigenic *Fusarium* species associated to cereal grains from Argentina. *Fungal Biol* 114:74–81. doi:10.1016/j.mycres.2009.10.008

- Sarver BAJ, Ward TJ, Gale LR, Broz K, Kistler HC, Aoki T, Nicholson P, Carter J, O'Donnell K (2011) Novel *Fusarium* head blight pathogens from Nepal and Louisiana revealed by multilocus genealogical concordance. *Fungal Genet Biol* 48:1096–1107. doi:10.1016/j.fgb.2011.09.002
- Schmale DG III, Leslie JF, Zeller KA, Saleh AA, Shields EJ, Bergstrom GC (2006) Genetic structure of atmospheric populations of *Gibberella zeae*. *Phytopathology* 96:1021–1026. doi:10.1094/PHYTO-96-1021
- Schneider S, Roessli D, Excoffier L (2000) Arlequin. A software for populations genetic data analysis, version 2.0. University of Geneva, Switzerland
- Sneath PHA, Sokal RR (1973) Numerical taxonomy: the principles and practice of numerical classification. Freeman, San Francisco
- Somma S, Petruzzella AL, Logrieco AF, Meca G, Cacciola OS, Moretti A (2014) Phylogenetic analyses of *Fusarium graminearum* strains from cereals in Italy, and characterisation of their molecular and chemical chemotypes. *Crop Pasture Sci* 65:52–60. doi:10.1071/CP13314
- Stenglein SA, Balatti PA (2006) Genetic diversity of *Phaeoisariopsis griseola* in Argentina as revealed by pathogenic and molecular markers. *Physiol Mol Plant Pathol* 68:158–167. doi:10.1016/j.pmp.2006.10.001
- Umpiérrez-Failache M, Garmendia G, Pereyra S, Rodríguez-Haralambides A, Ward TJ, Vero S (2013) Regional differences in species composition and toxigenic potential among *Fusarium* head blight isolates from Uruguay indicate a risk of nivalenol contamination in new wheat production areas. *Int J Food Microbiol* 166:135–140. doi:10.1016/j.ijfoodmicro.2013.06.029
- van der Lee T, Zhang H, van Diepeningen A, Waalwijk C (2015) Biogeography of *Fusarium graminearum* species complex and chemotypes: a review. *Food Addit Contam Part A Chem Anal Control Expo Risk Assess* 32:453–460. doi:10.1080/19440049.2014.984244
- Waalwijk C, Kastelein P, de Vries I, Kerényi Z, van der Lee T, Hesselink T, Köhl J, Kema G (2003) Major changes in *Fusarium* spp. in wheat in the Netherlands. *Eur J Plant Pathol* 109:743–754. doi:10.1007/978-94-017-1452-5_9
- Xu XM, Nicholson P, Ritieni A (2007) Effects of fungal interactions among *Fusarium* head blight pathogens on disease development and mycotoxin accumulation. *Int J Food Microbiol* 119:67–71. doi:10.1016/j.ijfoodmicro.2007.07.027
- Xu XM, Nicholson P, Thomsett MA, Simpson D, Cooke BM, Doohan FM, Brennan J, Monaghan S, Moretti A, Mule G, Hornok L, Beki E, Tatnell J, Ritieni A, Edwards SG (2008) Relationship between the fungal complex causing *Fusarium* head blight of wheat and environmental conditions. *Phytopathology* 98:69–78. doi:10.1094/PHYTO-98-1-0069
- Zeller KA, Bowden RL, Leslie JF (2003) Diversity of epidemic populations of *Gibberella zeae* from small quadrats in Kansas and North Dakota. *Phytopathology* 93:874–880. doi:10.1094/PHYTO.2003.93.7.874
- Zhao Y, Selvaraj JN, Xing F, Zhou L, Wang Y, Song H, Tan X, Sun L, Sangare L, Folly YME, Liu Y (2014) Antagonistic action of *Bacillus subtilis* strain SG6 on *Fusarium graminearum*. *PLoS One* 9(3):e92486. doi:10.1371/journal.pone.0092486