

# Identification of fast and slow growing rhizobia nodulating soybean (*Glycine max* [L.] Merr) by a multiplex PCR reaction

G.N. Pastorino<sup>a</sup>, V. Martinez Alcántara<sup>a,b</sup>, P.A. Balatti<sup>a,b,c,\*</sup>

<sup>a</sup> Cátedra de Microbiología Agrícola, Facultad de Ciencias Agrarias y Forestales, Universidad Nacional de La Plata, CC31, La Plata (1900), Argentina

<sup>b</sup> Comisión de Investigaciones Científicas de la Provincia de Buenos Aires, Buenos Aires, Argentina

<sup>c</sup> Instituto de Fisiología Vegetal, Facultad de Ciencias Agrarias y Forestales, Universidad Nacional de La Plata, CC327, La Plata (1900), Argentina

Received 17 July 2003; received in revised form 12 October 2003; accepted 13 October 2003

First published online 13 November 2003

## Abstract

Two DNA fragments, a 730-bp and a 900-bp fragment, one homologous to host cultivar specificity genes *noIBT* of *Sinorhizobium fredii* and the other one homologous to *RS $\alpha$* , an insertion-like sequence present in *Bradyrhizobium japonicum*, were generated by polymerase chain reaction (PCR) with two pairs of primers. The amount of each fragment generated by the multiplex PCR was proportional to the amount of template DNA present. The amplification of the 900-bp *RS $\alpha$*  fragment was more sensitive, since it was amplified from a smaller amount of template DNA than the 730-bp *noIBT* fragment. By running the multiplex reaction in the presence of template DNA isolated from different sources, we confirmed that the reaction can discriminate between *S. fredii*, *Bradyrhizobium japonicum* and *Sinorhizobium xinjiangensis*.

© 2003 Federation of European Microbiological Societies. Published by Elsevier B.V. All rights reserved.

**Keywords:** Soybean; Polymerase chain reaction; *Bradyrhizobium*; *Sinorhizobium*; *Rhizobium*; Molecular marker

## 1. Introduction

*Glycine max*, the soybean, is one of the most important and oldest cultivated crops [1]. It is a summer annual herb that has never been found in the wild [2]. Soybean nodulates and fixes nitrogen in symbiosis with Gram-negative soil bacteria from the genera *Bradyrhizobium*, *Mesorhizobium* and *Sinorhizobium*.

*Bradyrhizobium japonicum*, *Bradyrhizobium elkanii* (formerly *B. japonicum* DNA homology group II) [3] and *Bradyrhizobium liaoningense* [4] form nitrogen-fixing nodules with soybean, *B. japonicum* and *B. elkanii* have been used widely in commercial inoculants to increase soybean yields [5]. More recently, Keyser et al. [6] and Chen et al. [7,8] described the isolation of the fast growing rhizobia *Sinorhizobium fredii* [7,9], *Sinorhizobium xinjiangensis* [7,8] and *Mesorhizobium thianshanense* [8], from the soils of China. These bacteria nodulate and fix nitrogen in associ-

ation with soybean as efficiently as *B. japonicum* does [10,11].

Recently, the polymerase chain reaction (PCR) has provided a variety of easy and reliable techniques for the identification of microorganisms. These include enterobacterial repetitive intergenic consensus PCR and repetitive extragenic palindromic PCR. These protocols have been used successfully to identify individual strains [12]. In addition, PCR proved to be a reliable method to identify rhizobia at the species level. Examples include *Rhizobium galegae* [13], *B. japonicum* [14], *Sinorhizobium meliloti* [15] and *S. fredii* [16].

Videira et al. [16] identified *S. fredii* and *B. japonicum* by the amplification, in two separate reactions, of a 260-bp and a 900-bp fragment, respectively. They could not amplify both DNA fragments, *noIB* and *RS $\alpha$* , in a single reaction.

Because the identification through two independent reactions resulted in a time-consuming and costly protocol, the purpose of this work was to develop a multiplex PCR that will allow us to identify rhizobia nodulating soybean plants. Based on the *S. fredii* sequence *noIXWBTUV* and the *B. japonicum* insertion-like element *RS $\alpha$* , we developed four primers that generated in a single reaction a 730-bp

\* Corresponding author. Tel.: +54 (221) 4236618;

Fax: +54 (221) 4233698.

E-mail address: [pbalatti@ceres.agro.unlp.edu.ar](mailto:pbalatti@ceres.agro.unlp.edu.ar) (P.A. Balatti).

Table 1  
Rhizobium species used in this study

Species	Strain	Geographic origin	Reference	
<i>S. fredii</i>	SMH12	Vietnam	[17]	
	SMX11	Vietnam	[17]	
	SMH15	Vietnam	[17]	
	HH103	China	[18]	
	HH102	China	[18]	
	USDA191	China	[6]	
	USDA196	China	[6]	
	USDA257	China	[6]	
	USDA205 <sup>T</sup>	China	[6]	
	S8	China	[19]	
	B11	China	[19]	
	<i>Sinorhizobium xinjiangense</i>	CCBAU 110 <sup>T</sup>	China	[7]
	<i>Bradyrhizobium japonicum</i>	E109	Argentina	INTA Argentina
<i>Sinorhizobium meliloti</i>	USDA1002 <sup>T</sup>	USA	[20]	
	WSM419	Sardinia	[21]	
<i>Rhizobium tropici</i>	CIAT899 <sup>T</sup>	Mexico	[22]	
<i>Rhizobium galegae</i>	HAMBI540 <sup>T</sup>	Finland	[23]	
<i>Sinorhizobium saheli</i>	USDA4893 <sup>T</sup>	Senegal	[24]	
<i>Sinorhizobium teranga</i>	USDA4894 <sup>T</sup>	Senegal	[24]	
<i>Mesorhizobium ciceri</i>	USDA3383 <sup>T</sup>	Spain	[25]	
<i>Mesorhizobium loti</i>	USDA3015 <sup>T</sup>	New Zealand	[26]	
<i>Bradyrhizobium</i> sp.	CB756	Africa	[27]	

Stocks of all the species were kept at  $-70^{\circ}\text{C}$  with 7% glycerol. Slants made on YEM were stored at  $4^{\circ}\text{C}$ .

fragment homologous to *nolBT* and/or a 900-bp fragment homologous to *RS $\alpha$* , provided the appropriate template DNA is available. The presence or absence of these fragments allowed us to discriminate among *S. fredii*, *B. japonicum* and *S. xinjiangensis* in mixed DNA samples or in nodules.

## 2. Materials and methods

### 2.1. Bacterial strains

Bacterial species and strains used in this work are presented in Table 1. Stock cultures were kept at  $-70^{\circ}\text{C}$  in 7% glycerol [28]. Cultures were initiated by inoculating a

loop of bacteria taken from agar slants maintained at  $4^{\circ}\text{C}$ . Bacteria were grown in yeast extract–mannitol (YEM) medium [29] in an orbital shaker at 150 rpm at  $28^{\circ}\text{C}$ . *S. fredii* strains were kindly provided by Dr. Steven G. Pueppke (University of Missouri, Columbia, MO, USA) and Jose Ruiz-Sainz (Universidad de Sevilla, Seville, Spain). *S. meliloti*, *Rhizobium tropici*, *Mesorhizobium loti* and *Rhizobium leguminosarum* bv. *trifolii* strains were provided by Dr. Peter van Berkum, USDA-ARS Soybean and Alfalfa Research Laboratory, Beltsville, MD, USA.

### 2.2. DNA Isolation and PCR

DNAs were isolated from two sources, pure cultures and nodules. The procedure used to isolate DNA from

Table 2  
Sequences of the 20-mer primers that specifically amplify the *nolXWBTUV* locus of *S. fredii* and the *RS $\alpha$*  repetitive sequence of *B. japonicum*

Primer	5'-3' sequence	Fragment size (bp)	%GC	$T_m$ ( $^{\circ}\text{C}$ )
<i>nolXWBTUV</i> locus				
Forward primer nolBT	tgggcaagcgacgctgcccgg		75	68.0 <sup>a</sup> 65.5 <sup>b</sup>
Reverse primer nolBT	cgctcttgcaactgggtata	730	50	57.8 55.0
<i>RS<math>\alpha</math></i>				
Forward SAL1	agcgggcccggatagttctgttg		61	65.5 69.0
Reverse SAR1	ggctcggctctgctgttatgc	950	61	65.5 69.0

Forward primer nolBT [17] corresponds to position 2530–2550 bp of the *nolXWBTUV* locus (GenBank accession number L12251). Reverse primer nolBT corresponds to position 3259–3239 bp of the *nolXWBTUV* locus. SAL1 and SAR1 of *RS $\alpha$*  were described by Hartmann et al. [15].

<sup>a</sup>  $T_m$  calculated based on the following formula:  $T_m = 63.3 + 0.41 \times \text{GC}\% - 500/\text{length}$ .

<sup>b</sup>  $T_m$  calculated based on the following formula:  $T_m = (A+T) + 4 \times (C+G) - 5$ .

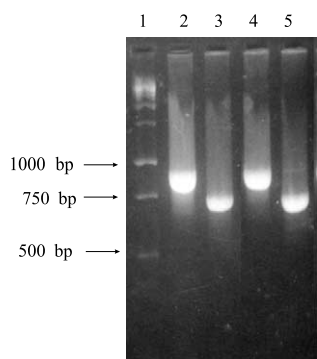


Fig. 1. PCR of *RSα* and *nolBT* from template DNA derived from *B. japonicum* and *S. fredii*. Lane 1, 1-kb ladder range 250–10000 (Promega); lane 2, reaction with template DNA from *B. japonicum* and *RSα* primers; lane 3, reaction with template DNA from *S. fredii* and primers *nolBT*; lane 4, reaction with template DNA from *B. japonicum* in the presence of primers *RSα* and *nolBT*; lane 5, reaction with template DNA from *S. fredii* in the presence of primers *RSα* and *nolBT*. Arrows indicate the sizes of the 1000-, 750- and 500-bp bands generated by the marker.

cultured strains was described by Meinhardt et al. [30]. DNA from nodules was extracted by crushing surface-sterilized nodules in Eppendorf tubes filled with 200  $\mu$ l of distilled water. Then the tubes were heated at 95°C for 20 min and centrifuged for 10 min. An aliquot of the supernatant solution was used as template for the PCRs.

PCRs were performed in a 15- $\mu$ l volume with a PTC-100 M&J Research Thermocycler programmed as follows: an initial step at 94°C for 3 min; then 29 cycles of 45 s at 95°C and 1 min at 65°C. There was a final extension of 4 min at 72°C.

PCR was performed using as template DNA either intact rhizobium cells or nodule extracts or pure DNA. The reactions were performed with 10–20 ng of DNA or 4  $\mu$ l of nodule extracts or whole bacterial cells from liquid cultures or water extract of rhizobia (a loop of bacteria was resuspended in water and heated at 99°C for 5 min). Reactions contained 1.5 mM  $MgCl_2$ , 0.125 mM of primers *nolBT1* and *nolBT2*, 0.375 mM primers *SAR* and *SAL*, 0.200 mM dNTPs, 1 U of T-Plus DNA polymerase (Highway Molecular Biology-INBIO-UNICEN) in 1 $\times$  reaction buffer containing 50 mM KCl; 10 mM Tris-HCl, pH 9.0 at 25°C; 1% Triton<sup>®</sup> X-100. The PCR products were visualized by electrophoresis in 2% agarose gels stained with ethidium bromide and were exposed to UV light with a transilluminator. Gels were photographed with a Polaroid PS34 camera. Pictures were scanned, analyzed and printed.

### 3. Results and discussion

Soybean nodulates and fixes nitrogen in association with different rhizobial species [3,4,6–12] and so evaluation of the efficiency of field inoculations and the survival and

competitive ability of rhizobia introduced by means of inoculants is quite dependent upon the availability of reliable techniques of identification.

Videira et al. [16] identified rhizobia nodulating soybean by means of two DNA sequences amplified in two independent reactions. However, the authors failed to amplify both fragments in a single PCR reaction, most probably due to the differences in the melting temperature of both pairs of primers and/or the different length of the DNA fragments amplified by each pair of primers.

In order to overcome this shortcoming, a larger fragment of DNA, the *nolBT* region, was amplified by using primers *nolBT1* and *nolBT2* (Table 2), which were derived from the previously published sequence of *S. fredii* USDA257 [30]. The PCR yielded a 730-bp band from genomic DNA of *S. fredii*. The same PCR program with the *SAR/SAL* pair of primers generated a 900-bp fragment, *RSα*, from *B. japonicum* template DNA (Fig. 1) [14]. The two fragments were amplified even though there were two pairs of primers in the reaction tube. Furthermore, both fragments were generated from a mixture of template DNA (Fig. 3). This finding suggests that both reactions are specific and that neither the mixture of primers nor the mixture of template DNAs inhibited the amplification of the specific fragments.

Table 3

Template DNA isolated from different species and strains of rhizobia and their ability to act as templates of the multiplex PCR reaction

	730-bp <i>nolBT</i>	900-bp <i>RSα</i>
<i>Bradyrhizobium japonicum</i>	–	+
<i>Sinorhizobium fredii</i>		
USDA205 <sup>T</sup>	+	–
USDA191	+	–
USDA196	+	–
USDA197	+	–
USDA257	+	–
HH103	+	–
S8	+	–
B11	–	–
SMH10	+	–
SMX11	+	–
SMH13	+	–
SMH15	+	–
<i>Rhizobium tropici</i>		
CIAT 899 <sup>T</sup>	–	–
<i>Sinorhizobium meliloti</i>		
USDA1002 <sup>T</sup>	–	–
WSM419	–	–
<i>Sinorhizobium saheli</i>		
USDA4893 <sup>T</sup>	–	–
<i>Rhizobium galegae</i>		
HAMBI 540 <sup>T</sup>	–	–
<i>Sinorhizobium terengae</i>		
USDA 4894 <sup>T</sup>	–	–
<i>Sinorhizobium xinjiangensis</i>		
CCBAU110 <sup>T</sup>	–	–
<i>Bradyrhizobium</i> sp.		
CB756	–	–
<i>Mesorhizobium loti</i>		
USDA3015 <sup>T</sup>	–	–

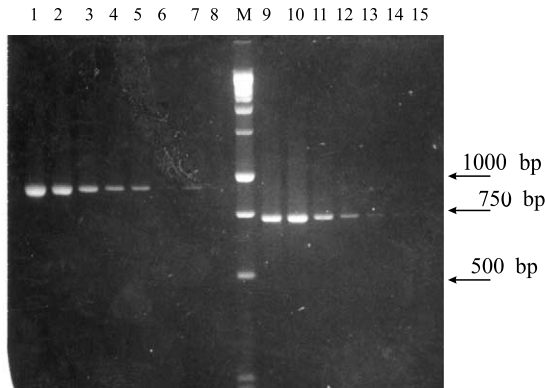


Fig. 2. Amplification of *RSα* and *nolBT* in the presence of decreasing amounts of template DNA from *B. japonicum* and *S. fredii*, respectively. Lanes 1–8, *B. japonicum* template DNA; lanes 10–15, *S. fredii* template DNA. Lanes 1 and 9, 820 pg; lanes 2 and 10, 410 pg; lanes 3 and 11, 200 pg; lanes 4 and 12, 100 pg; lanes 5 and 13, 50 pg; lanes 6 and 14, 25 pg; lanes 7 and 15, 12 pg of DNA; lane 8, no template DNA. Lane M, 1-kb ladder range 250–10 000 (Promega).

Whether the multiplex reaction is a useful tool depends upon the specificity of the reaction. Several multiplex amplifications were performed in the presence of template DNA isolated from related and unrelated rhizobia (Table 3). The specificity of the reaction was evaluated among 12 *S. fredii* strains, and we found that genomic DNA from all the strains, except for B11, generated the 730-bp fragment specific to *S. fredii*. The *nolXWBTUV* locus is conserved among *S. fredii* strains [16,30]. Furthermore, it has also been found in the closely related strain *Rhizobium* sp. NGR234 [12]. Strain B11 has been recently isolated from the soils of China [19] and although it was isolated from nodulated soybean cv. Jing Dou19, it failed to nodulate other soybean cultivars like Williams, Asgrow 4404 and Heinong 33. Furthermore, strain B11 showed different plasmid, lipopolysaccharide and RAPD profiles compared to other strains isolated from nodulated soybean plants cv. Jing Dou19. These findings suggest that strain B11 might not be *S. fredii*.

The multiplex PCR for identification of rhizobia should be sensitive enough to detect small amounts of DNA. The amount of the amplified sequences by PCR was found to be proportional to the concentration of template DNA, whether its source was fast growing *S. fredii* strains or slow growing *B. japonicum* (Fig. 2). The sensitivity of *RSα* was 10 times higher compared to the *nolBT* fragment, based on the amount of template DNA from *S. fredii* or from *B. japonicum* (Fig. 2) required for a successful amplification.

The minimal concentration of DNA needed to amplify the 900-bp fragment was insufficient for the amplification of the 730-bp fragment homologous to *nolBT* (Fig. 2). This was confirmed with reactions performed with cell suspensions of rhizobia grown on solid or liquid media. The amplification of the 730-bp fragment showed a threshold detection limit of  $1 \times 10^5$  cells (data not shown) while *RSα* had a much lower detection limit, which was found

to be between  $1.6$  and  $3.4 \times 10^3$  [14]. Whenever the multiplex reaction was performed with whole cells, its sensitivity was reduced, most probably due to the inhibitory effect of cell constituents that remain in the reaction mixture.

There are two possible explanations for the difference in sensitivity between the *S. fredii* 730-bp and the *B. japonicum* 900-bp fragments. One is that the number of copies of the target sequence is different. The number of copies of *RSα* varies between species of *B. japonicum* and *B. elkanii* [14], while *nolBT* is a single copy locus of *S. fredii* [30]. In order to increase the sensitivity of the reaction for *S. fredii* strains we increased the number of cycles of the reaction from 30 to 40 and 50 cycles and found that although the addition of PCR cycles improved the sensitivity of the reaction, *RSα* was still much more sensitive than *nolBT*. The other explanation of the higher sensitivity of the *RSα* fragment is that unlike the *nolBT* primers, the SAR/SAL primers have identical melting temperatures and GC content, which should contribute to achieve a higher level of specificity.

A single nodule may be occupied by more than one strain or species of rhizobia [16]. In order to rapidly determine if a nodule is cohabited by *B. japonicum* and *S. fredii* strains, it is better to amplify both fragments at the same time. We thus performed multiplex PCRs in the presence of increasing concentrations of genomic DNA from *S. fredii* mixed with decreasing amounts of genomic *B. japonicum* DNA (Fig. 3). Although the amplification reactions were quite dependent upon the DNA concentration, both DNA fragments were amplified concomitantly, even if the template DNA was supplied in a concentration of 1 ng in the case of *B. japonicum* and 3 ng in the case of *S. fredii* (Fig. 3).

0 1 3 5 10 20 30 35 37 39 40 ng *B.j.*  
40 39 37 35 30 20 30 05 03 01 0 ng *S.f.*

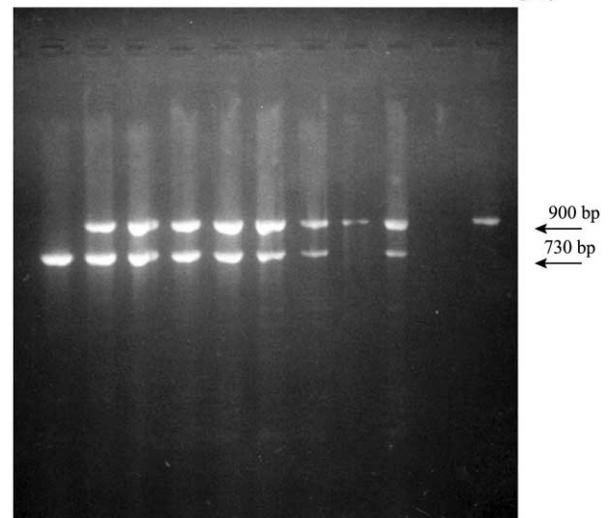


Fig. 3. *RSα* and *nolBT* amplification from a mixture of template DNA derived from *B. japonicum* and *S. fredii*. Reactions were performed in the presence of increasing concentrations of template DNA from *B. japonicum* and decreasing concentrations of *S. fredii* template DNA.

The 900-bp fragment homologous to RS $\alpha$  specifically identified *B. japonicum* as described by Hartmann et al. [14] and Videira et al. [16]. Therefore, the PCR multiplex reaction allows us to discriminate in a single reaction whether a bacterium nodulating soybean is a fast growing or a slow growing *B. japonicum*. No other species of rhizobia other than *S. fredii* and *B. japonicum* provided template DNA that allowed the amplification of any of the two identification bands (Table 3), confirming the specificity of the reaction. However, *S. xinjiangense* could not be identified except by the absence of the two fragments, which still is not a confirmation of the bacterial identity, since soybean can also be nodulated by *B. liaoningense*. Future work should be aimed at developing a multiplex reaction that can also amplify DNA bands that will specifically identify and/or discriminate *B. liaoningense* and *S. xinjiangensis*.

The availability of this multiplex PCR will allow us to determine in a short time the identity of bacteria occupying nodules, enabling a study of the competitive ability of fast and slow growing rhizobia and their ability to nodulate soybeans.

## Acknowledgements

Thanks are due to Steven G. Puepke for critically reviewing the manuscript. P.A.B. is a member of the CICBA. G.P. was funded by the FOMEC Ministerio de Educación de la Nación. V.M.A. was funded by CICBA. This work was supported by a grant from FONCYT SCyT de la Nación and Consejo Nacional de Investigaciones Científicas (CONICET), CICBA and Universidad Nacional de La Plata. Experiments comply with the current laws of the country.

## References

- [1] Martin, J.H. and Leonard, W.H. (1967) Soybeans. In: Principles of Field Crop Production, pp. 643–662. MacMillan, New York.
- [2] Hirth, F. (1908) The Ancient History of China and the End of the Cou Dynasty. Columbia University Press, New York.
- [3] Kuykendall, L., Sayena, D.B., Devine, T.E. and Udell, S.U. (1992) Genetic diversity in *Bradyrhizobium japonicum*, Jordan 1982 and a proposal for *B. elkanii* sp. nov. J. Microbiol. 38, 501–505.
- [4] Xu, L.M., Ge, C., Cui, Z., Li, J. and Fan, H. (1995) *Bradyrhizobium liaoningense* sp. nov., isolated from the root of soybeans. Int. J. Syst. Bacteriol. 45, 706–711.
- [5] Hume, D.J. and Blair, D.H. (1992) Effect of numbers of *Bradyrhizobium japonicum* applied in commercial inoculants on soybean yield in Ontario. Can. J. Microbiol. 38, 588–593.
- [6] Keyser, H.H., Bohlool, B.B., Hu, T.S. and Weber, D.F. (1982) Fast-growing rhizobia isolated from root nodules of soybean. Science 215, 1631–1632.
- [7] Chen, W.X., Yan, G.H. and Li, J.L. (1988) Numerical taxonomic study of fast-growing soybean rhizobia and a proposal that *Rhizobium fredii* be assigned to *Sinorhizobium* gen. nov. Int. J. Syst. Bacteriol. 38, 392–397.
- [8] Chen, W.X., Wang, E., Wang, S., Li, X., Chen, X. and Li, Y. (1995) Characteristics of *Rhizobium tianshanense* sp. nov., a moderately and slowly growing root nodule bacterium isolated from an arid saline environment in Xinjiang, People's Republic of China. Int. J. Syst. Bacteriol. 45, 153–159.
- [9] Scholla, M.H. and Elkan, G.H. (1984) *Rhizobium fredii* sp. nov. a fast growing species that effectively nodulates soybeans. Int. J. Syst. Bacteriol. 34, 484–486.
- [10] Balatti, P.A. and Puepke, S.G. (1992) Identification of North American soybean lines that form nitrogen-fixing nodules with *Rhizobium fredii* USDA257. Can. J. Plant Sci. 72, 49–55.
- [11] Videira, L.B., Pastorino, G.N. and Balatti, P.A. (2001) Incompatibility may not be the rule in the *Sinorhizobium fredii*-soybean interaction. Soil Biol. Biochem. 33, 837–840.
- [12] Saldaña, G., Martínez Alcántara, V., Vinardell, J.M., Bellogin, R., Ruiz-Sainz, J. and Balatti, P.A. (2003) Genetic diversity of fast-growing rhizobia that nodulate soybean (*Glycine max* L. Merr). Arch. Microbiol. 180, 45–52.
- [13] Tas, E., Saano, A., Leinonen, P. and Lindstrom, K. (1995) Identification of *Rhizobium* spp. in peat-based inoculants by DNA hybridization and PCR and its application in inoculant quality control. Appl. Environ. Microbiol. 61, 1822–1827.
- [14] Hartmann, A., Gomez, M., Giraud, J.J. and Revelin, C. (1996) Repeated sequence RS $\alpha$  is diagnostic for *Bradyrhizobium japonicum* and *Bradyrhizobium elkanii*. Biol. Fertil. Soils 23, 15–19.
- [15] Sanchez-Contreras, M., Lloret, J., Martín, M., Villaceros, M., Bonilla, I. and Rivilla, R. (2000) PCR use of highly conserved DNA regions for identification of *Sinorhizobium meliloti*. Appl. Environ. Microbiol. 66, 3621–3623.
- [16] Videira, L.B., Pastorino, G.N., Martínez-Alcántara, V. and Balatti, P.A. (2002) *Sinorhizobium fredii* isolates can be specifically identified by a 260-bp fragment from the *nodXWBTUV* locus. Appl. Microbiol. Biotechnol. 59, 265–269.
- [17] Cleyet-Marel, J.C. (1987) Dynamique des populations de *Rhizobium* et de *Bradyrhizobium* dans le sol et la rhizosphère. Thesis, Université Claude Bernard, Lyon.
- [18] Dowdle, S.F. and Bohlool, B.B. (1985) Predominance of fast-growing *Rhizobium japonicum* in a soybean field in the Peoples's Republic of China. Appl. Environ. Microbiol. 50, 1171–1176.
- [19] Yang, S.S., Bellogin, R.A., Buendía-Clavería, A., Camacho, A., Chen, M., Cubo, T., Daza, A., Diaz, C.L., Espuny, M.R., Gutierrez, R., Hartevelde, M., Lim, X.H., Lyra, M.C.C.P., Madinabeitia, N., Medina, C., Miao, L., Ollero, F.J., Olsthoorn, M.M.A., Rodríguez, D.N., Santamaría, C., Schlaman, H.R.M., Spaink, H.P., Temprano, F., Thomas-Oates, J.E., Van Brussel, A.A.N., Vinardell, J.M., Xie, F., Yang, J., Zhang, H.Y., Zhen, J., Zhou, J. and Ruiz-Sainz, J.E. (2001) Effect of pH and soybean cultivars on the quantitative analysis of soybean rhizobia populations. J. Biotechnol. 91, 243–255.
- [20] Dangeard, P.A. (1926) Recherches sur les tubercules radicaux des légumineuses. Botanis (Paris) 16, 1–275.
- [21] Howieson, J.G. and Ewing, M.A. (1986) Acid tolerance in the *Rhizobium meliloti*-*Medicago* symbiosis. Aust. J. Agric. Res. 43, 765–772.
- [22] Martínez-Romero, E., Segovia, L., Mercante, F.M., Franco, A.A., Graham, P. and Pardo, M.A. (1991) *Rhizobium tropici*, a novel species nodulating *Phaseolus vulgaris* L. beans and *Leucaena* sp. trees. Int. J. Syst. Bacteriol. 41, 417–426.
- [23] Lindstrom, K. (1989) *Rhizobium galegae*, a new species of legume root nodule bacteria. Int. J. Syst. Bacteriol. 39, 365–367.
- [24] De Lajudie, P.A., Willems, A., Pot, B., Dewettinck, D., Maestrojuan, G., Neyra, M., Collins, M.D., Dreyfus, B., Kersters, K. and Gillis, M. (1994) Polyphasic taxonomy of rhizobia: emendation of the genus *Sinorhizobium* and description of *Sinorhizobium meliloti* comb. nov., *Sinorhizobium saheli* sp. nov., and *Sinorhizobium terangae* sp. nov. Int. J. Syst. Bacteriol. 44, 715–733.
- [25] Nour, S.M., Fernandez, M.P., Normand, P. and Cleyet-Marel, J.-C. (1994) *Rhizobium* heterogeneity of strains nodulating chickpea (*Cicer arietinum* L.) and description of *Rhizobium mediterraneum*, sp. nov. Int. J. Syst. Bacteriol. 45, 640–648.

- [26] Jarvis, B.D.W., Pankhurst, C.E. and Pate, I. (1982) *Rhizobium loti*, a new species of legume root nodule bacteria. *Int. J. Syst. Bacteriol.* 32, 378–380.
- [27] Norris, D.O. (1956) Legumes and the *Rhizobium* symbiosis. *Emp. J. Exp. Agric.* 24, 247–270.
- [28] Chatterjee, A., Balatti, P.A., Gibbons, W. and Pueppke, S.G. (1980) Interaction of *Rhizobium fredii* USDA257 and nodulation mutants derived from it with the agronomically improved soybean cultivar McCall. *Planta* 180, 303–311.
- [29] Vincent, J.M. (1970) *A Manual for the Practical Study of Root Nodule Bacteria*. Blackwell Scientific, Oxford.
- [30] Meinhardt, L.W., Krishnan, H.B., Balatti, P.A. and Pueppke, S.G. (1993) Molecular cloning and characterization of a sym plasmid locus that regulates cultivar specific nodulation of soybean by *Rhizobium fredii* USDA257. *Mol. Microbiol.* 9, 17–29.