

# A comprehensive guide to the Argentinian case-bearer beetle fauna (Coleoptera, Chrysomelidae, Camptosomata)

Federico A. Agrain<sup>1</sup>, Maria Lourdes Chamorro<sup>2</sup>,  
Nora Cabrera<sup>3</sup>, Davide Sassi<sup>4</sup>, Sergio Roig-Juñent<sup>1</sup>

**1** *Laboratorio de Entomología, IADIZA (CCT-Mendoza), Consejo Nacional de Investigaciones Científicas y Técnicas (CONICET), C. C. 507, 5500 Mendoza, Argentina* **2** *Department of Entomology, National Museum of Natural History, Smithsonian Institution, Systematic Entomology Laboratory, USDA, NMNH, Smithsonian Institution, P.O. Box 37012, MRC-187, Washington, DC, 20013-7012, USA* **3** *División Entomología. Museo de La Plata. Paseo del Bosque s/n, 1900 La Plata, Argentina* **4** *Centro di Entomologia Alpina – Università degli Studi di Milano, Via Celoria 2, 20133 Milano, Italy*

Corresponding author: *Federico A. Agrain* ([fagrain@mendoza-conicet.gov.ar](mailto:fagrain@mendoza-conicet.gov.ar))

---

Academic editor: *A. Eben* | Received 12 October 2016 | Accepted 24 April 2017 | Published 26 May 2017

---

<http://zoobank.org/1C3D9A99-7A4C-443F-B228-CEA383A2D72F>

---

**Citation:** Agrain FA, Chamorro ML, Cabrera N, Sassi D, Sergio R-J (2017) A comprehensive guide to the Argentinian case-bearer beetle fauna (Coleoptera, Chrysomelidae, Camptosomata). *ZooKeys* 677: 11–88. <https://doi.org/10.3897/zookeys.677.10778>

---

## Abstract

Knowledge of Argentinian Camptosomata has largely remained static for the last 60 years since the last publication by Francisco de Asis Monrós in the 1950's. One hundred and ninety Camptosomata species (182 Cryptocephalinae and 8 Lamprosomatinae) in 31 genera are recorded herein from Argentina. Illustrated diagnostic keys to the subfamilies, tribes, subtribes and genera of Argentinian Camptosomata, plus species checklists and illustrations for all genera of camptosomatan beetles cited for each political region of Argentina are provided. General notes on the taxonomy and distribution, as well as basic statistics, are also included. This study provides basic information about the Camptosomata fauna in Argentina that will facilitate in the accurate generic-level identification of this group and aid subsequent taxonomic revisions, and phylogenetic, ecological, and biogeographic studies. This information will also facilitate faunistic comparisons between neighboring countries. Two nomenclatural acts are proposed: *Temnodachrys* (*Temnodachrys*) *argentina* (Guérin, 1952), **comb. n.**, and *Metallactus bivitticollis* (Jacoby, 1907), **comb. n.** The following are new records for Argentina: *Stegnocephala xanthopyga* (Suffrian, 1863) and *Lamprosoma azureum* Germar, 1824. Currently, the most diverse camptosomate tribe in Argentina is Clytrini, with almost twice the number of species of Cryptocephalini. New records for Argentina are predicted.

**Keywords**

Argentina, Cryptocephalinae, Distribution, Diversity, Genera, Lamprosomatinae, Provinces, Richness, Taxonomy

**Introduction**

In Argentina there are 956 recorded species of Chrysomelidae (excluding Bruchinae) in 258 genera (Cabrera and Roig-Juñent 1998a). Only two subfamilies of leaf beetles are not represented in Argentina: Donaciinae Kirby and Syntetinae LeConte and Horn. Most subtropical species are distributed in the Amazonian and Chacoan domain (Cabrera and Willink 1973). However, current knowledge of Argentinian Chrysomelidae is incomplete. The present paper is the first one in a planned series on the Argentine chrysomelid fauna.

The chrysomelid subfamilies Cryptocephalinae and Lamprosomatinae are collectively known as “Camptosomata” or “case-bearers,” due to the peculiar habit of having their eggs, larvae, and pupae living in a fecal protective case (Brown and Funk 2005; Chaboo et al. 2008; Erber 1988, Jolivet and Hawkeswood 1995). Adults of case-bearing chrysomelids feed on foliage of a variety of eudicots (Erber 1988), but their larvae often show departures from strict phytophagy. The larvae of some Clytrini and Cryptocephalini live in ant nests, where they feed on other items such as ant droppings and pellets, detritus, leaf litter and even dead insects collected by the ants (Agrain et al. 2015, and references therein). The larvae of camptosomates can be easily recognized by the behavior of carrying a portable case and the J-shaped body morphology.

Lamprosomatinae includes four tribes (Chamorro and Konstantinov 2011): Cachiporini (1 genus), Neochlamysini (2 genera), Sphaerocharini (1 genus), and Lamprosomatini (10 genera) (Seeno and Wilcox 1982), totalling 190 described species (Reid 2016). Reid (2016) and Chamorro (2014a), concur on a world estimate of 250 species. In Argentina, the only genus represented is *Lamprosoma* Kirby. Cryptocephalinae includes ~5300 species, independently calculated by Chamorro, (2014b) and Reid (2016) that are classified into three tribes: Cryptocephalini, Clytrini, and Fulcidacini (until recently treated under the name Chlamisini) as originally proposed by Reid (1995, 2000). Members of the subfamily are distributed worldwide, but many tribes have distinct distributions (Erber 1988). Species are phytophagous in the adult stage, primarily leaf and flower feeders. All three tribes of this subfamily have representative genera in Argentina. The main goal of this contribution is to provide an updated systematic framework for Argentinian Camptosomata, treating all of its genera in order to better measure our current knowledge of these groups. This work includes the compilation of former fragmentary literature on the subject.

**Type material of Argentinian Camptosomata**

Most of the type specimens of Argentinian Camptosomata are deposited in European institutions: The Natural History Museum, London, United Kingdom (BMNH), Hun-

garian Natural History Museum, Budapest, Hungary (HNHM), Institut Royal des Sciences Naturelles de Belgique, Brussels, Belgium (KBIN), Museo Regionale di Scienze Naturali di Torino (MRSN), Museum für Naturkunde der Humboldt Universität, Berlin, Germany (ZMHB), and National Museum, Prague, Czech Republic (NMPC). There are also type specimens in institutions in the United States: Museum of Comparative Zoology Collection, Harvard University, Boston, USA (MCZ), and the National Museum of Natural History, Smithsonian Institution, Washington D.C., USA (USNM). Yet, some type specimens are deposited in Museo de La Plata, La Plata, Argentina (MLPA) (see Cabrera and Roig-Juñent 1998b), Instituto y Fundación Miguel Lillo, Tucumán, Argentina (IMLA) (Aranda et al. 2016), and Museo Argentino de Ciencias Naturales ‘Bernardino Rivadavia’, Buenos Aires, Argentina (MACN) (Bachmann and Cabrera 2010). Two of the most prominent workers on Argentinian Camptosomata were Francisco de Asis Monrós, whose collection was donated to the Smithsonian Institution (USNM) (Staines 1995), and Manuel Viana, whose collection is now housed in Tucumán and Salta Provinces in Argentina and in Chile. More recently, a few type specimens have been deposited in the Instituto Argentino de Investigaciones de las Zonas Áridas, Mendoza, Argentina (IADIZA) by Agrain (2013, 2014).

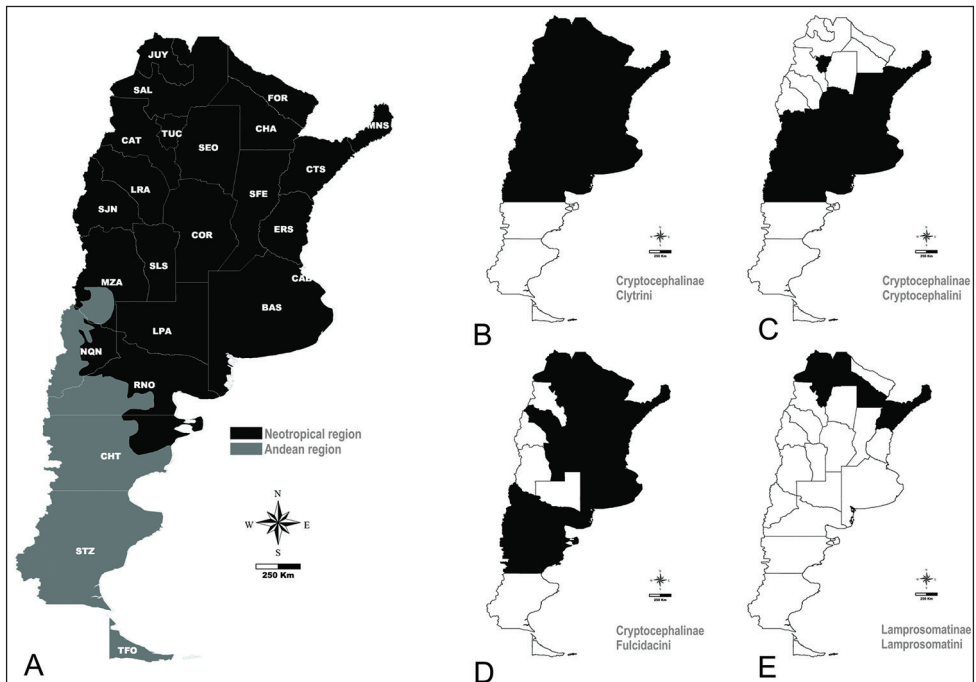
## Methods

We studied all catalogs and specialized literature dealing with the genera treated in this contribution. Nomenclature follows previous authors, especially those who made extensive revisions of this group, such as Andrew Moldenke, Francisco Monrós, Jacintho Guérin, and Martin Jacoby. Characters used for identification keys are those used by: Agrain and Roig-Juñent (2011), Chamorro-Lacayo and Konstantinov (2009), Guérin (1943), Karren (1972), Lacordaire and Chapuis (1854), Moldenke (1970, 1981), Monrós (1949a, 1953a), and Riley et al. (2002). An identification key to the subfamilies, tribes, subtribes, genera, and subgenera of Argentinian Camptosomata was made by compiling and modifying previous publications as indicated in Table 1. Some couplets in our key, derived from keys provided by earlier authors, are based on extreme representatives of a rather continuous spectrum. The latter is due to the fact that many genera, and especially subgenera, require modern revision. Our key is built for the identification of taxa on the territory of Argentina but is useful for the South American continent. The characters given for some widely distributed genera (e.g., *Cryptocephalus* Geoffroy, *Pachybrachis* Chevrolat) may not apply to species outside Argentina. Images of dorsal and lateral habiti were taken by different authors as indicated in superscript values: <sup>(1)</sup> F. Agrain, <sup>(2)</sup> L. Chamorro, <sup>(3)</sup> C. Gorretta, N. Cabrera, and <sup>(4)</sup> D. Sassi, and edited by F. Agrain.

We conducted an exhaustive search of all publications citing Argentinian camptosomates. Here we present a checklist of all currently known camptosomate species from Argentina, their distribution, host plant preferences, juvenile data where available, and known predators. Junior synonyms are provided for each species when applicable. The 24 provinces in Argentina (Fig. 1A) are abbreviated as follows: Buenos Aires (BAS),

**Table 1.** Main sources of information used for the identification key.

Group	Citation
Genera of Fulcidacini	Chamorro-Lacayo and Konstantinov (2009), Karren (1972), Lacordaire and Chapuis (1854).
Genera and subgenera of Clytrini	Agrain and Roig-Juñent (2011), Lacordaire and Chapuis (1854), Moldenke (1981), Monrós (1953a).
Subtribes of Cryptocephalini	Lacordaire and Chapuis (1854), Riley et al. (2002).
Genera of Cryptocephalina	Lacordaire and Chapuis (1854), Monrós (1949a), Watts (2005).
Genera of Pachybrachina	Chamorro (2013); Lacordaire and Chapuis (1854).



**Figure 1.** Distribution of Camptosomata tribes. **A** Map showing Argentinian administrative divisions with abbreviation as used in text. Andean and Neotropical regions as indicated in color reference **B** In black, administrative divisions containing Clytrini species **C** In black, administrative provinces containing Cryptocephalini species **D** In black, administrative divisions containing Fulcidacini species **E** In black, administrative divisions containing Lamprosomatini species.

Catamarca (CAT), Chaco (CHA), Chubut (CHT), Ciudad Autónoma de Buenos Aires (CAB), Córdoba (COR), Corrientes (CTS), Entre Ríos (ERS), Formosa (FOR), Jujuy (JUY), La Pampa (LPA), La Rioja (LRA), Mendoza (MZA), Misiones (MNS), Neuquén (NQN), Río Negro (RNO), Salta (SAL), San Juan (SJN), San Luis (SLS), Santa Cruz (SCZ), Santa Fe (SFE), Santiago del Estero (SEO), Tierra del Fuego (TFO), Tucumán (TUC). The source map of Andean and Neotropical regions of Argentina was obtained from Löwenberg-Neto (2014).



**Terminology**

Terminology follows previous authors as indicated in table 1. The term “egg anal pit” refers to a medioventral excavation on terminal abdominal ventrite, mostly present in the females (Chaboo 2007, and references therein). The term “rectal apparatus” refers to a specialized region of the rectum of females, whose sclerites and muscles are used during oviposition (De Monte 1957, Erber 1988, Brown and Funk 2005, Schöller 2008). This structure is unique to the Cryptocephalinae (Reid 1995).

**Results**

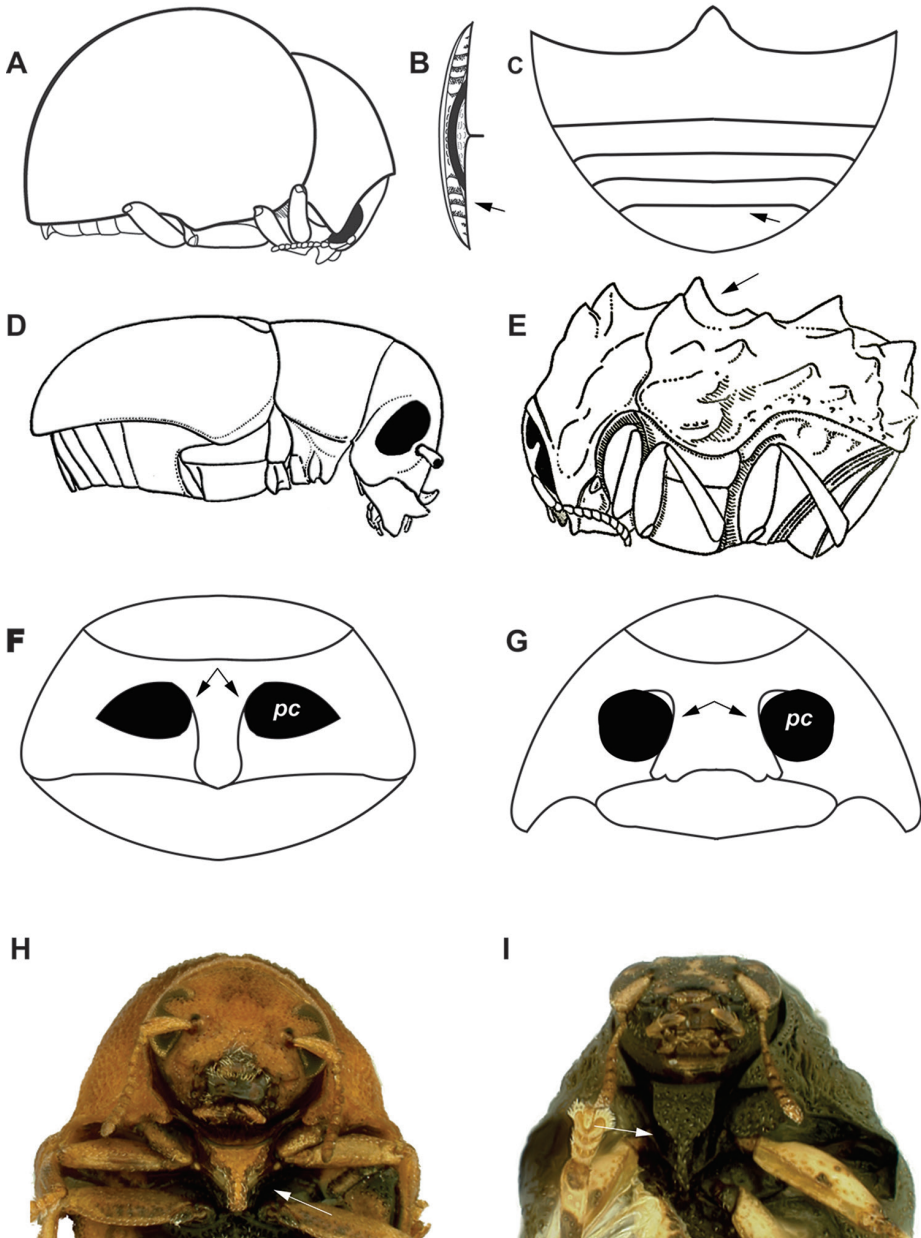
**Keys to the subfamilies, tribes, subtribes, genera, and subgenera of Argentinian Camptosomata**

Note: Some of the characters in this key are valid for Neotropical species only

- 1 Body dorsally highly convex and ventrally flattened (semicircular in cross-section) (Fig. 2A); abdominal ventrites not connate; antennal grooves present on intercoxal prosternal process; females without a well developed fovea (egg anal pit) on ventrite V (**Lamprosomatinae**). Distal margin of last ventrite thick (Fig. 2B); last ventrite not excised in shape of arc (Fig. 2C); pygidium completely covered by elytra; scutellum acutely triangular (small to very small); elytral punctation arranged in regular rows or with a tendency to form such rows.....**Lamprosoma Kirby** (Fig. 34). (**Lamprosomatini**)
- Body not highly convex, not flattened ventrally (Fig. 2D) (oval in cross-section); abdominal ventrites connate; antennal grooves absent on intercoxal prosternal process (except Fulcidacini and Ischiopachina (Clytrini)); females with a distinct, variably shaped fovea (egg anal pit) on ventrite V ..... **2. (Cryptocephalinae)**

**Cryptocephalinae**

- 2(1) Intercoxal prosternal process with antennal furrows; body surface usually tuberculate (Fig. 2E); elytral suture usually serrate ..... **4 (Fulcidacini)**
- 2’ Pronotum and intercoxal prosternal process without antennal furrows ( Ischiopachina with furrows on hypomeron); body surface not tuberculate; elytral suture entire..... **3**
- 3(2) Antennae short (not surpassing the length of pronotum), serrate; procoxae contiguous (Fig. 2F) ..... **9 (Clytrini)**
- 3’ Antennae long (surpassing the length of pronotum, sometimes nearly equal to total body length), filiform, sometimes some segments expanded and flattened; procoxae separated (Fig. 2G)..... **29 (Cryptocephalini)**



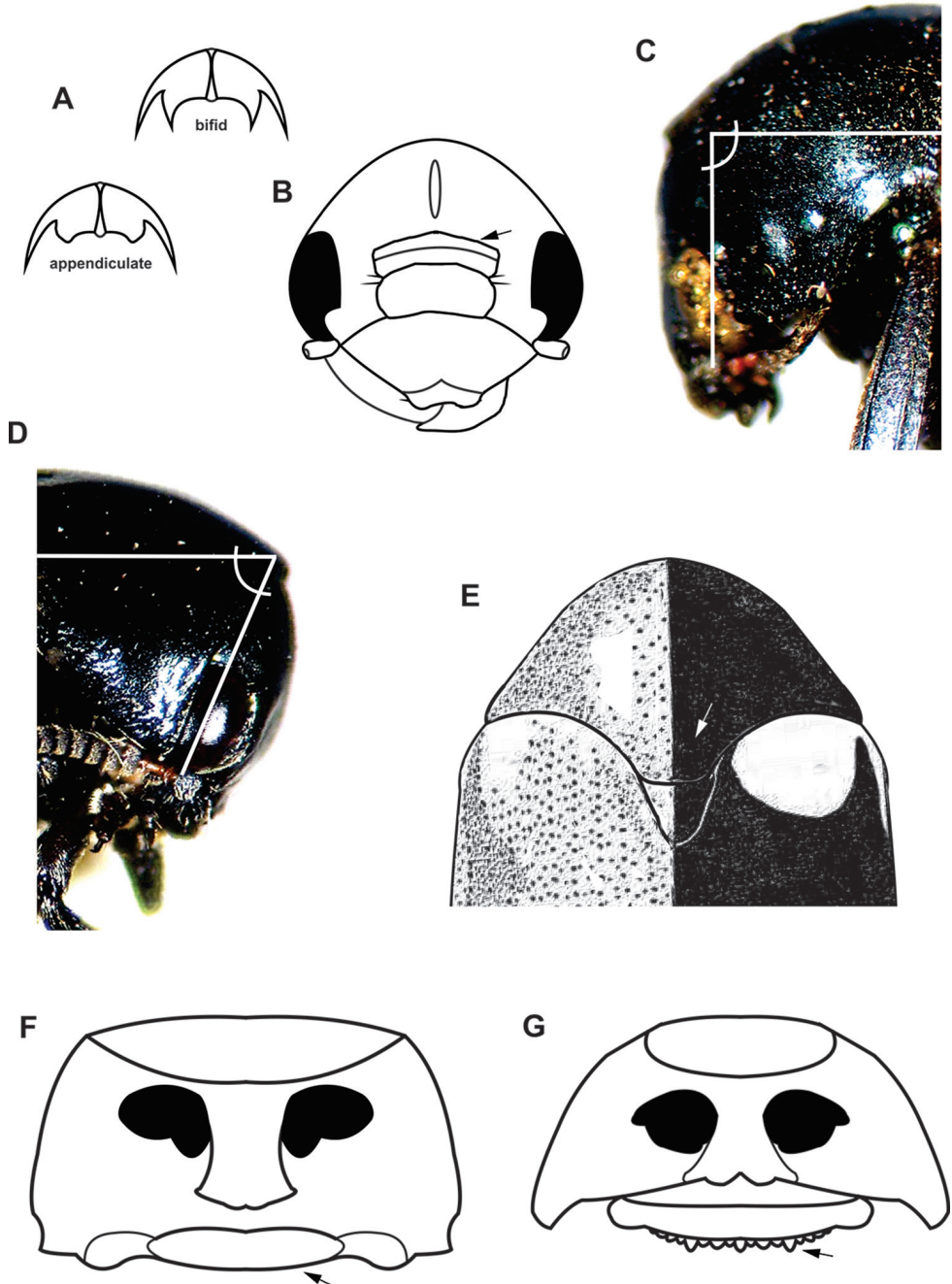
**Figure 2.** Diagnostic characters plate 1. **A** Body dorsally highly convex and ventrally flattened (semi-circular in cross-section (drawn after Monrós 1956) **B** Distal margin of last ventrite thick (drawn after Chamorro and Konstantinov 2011) **C** Last ventrite not excised in shape of arc **D** Body cylindrical, not flattened ventrally (drawn after Monrós 1953a) **E** body surface usually tuberculate (drawn after Monrós 1951) **F** procoxae prominent and contiguous **G** procoxae not prominent and separated **H** prosternal process more than  $3/4$  as long as intercoxal prosternal process (after Chamorro-Lacayo and Konstantinov (2009) **I** intercoxal prosternal process gradually constricted at about  $2/3$  of its length (after Chamorro-Lacayo & Konstantinov (2009).

**Fulcidacini**

- 4(2) Intercoxal prosternal process nearly rectangular, with posterior margin slightly narrower than anterior margin; pronotal and elytral tubercles reduced, sometimes with velvet patches.....**Melittochlamys Monrós** (Fig. 32)
- 4' Intercoxal prosternal process varying in shape, triangular or angulate between mesocoxae, but never rectangular, with posterior margin much narrower than anterior margin; pronotal and elytral tubercles well developed.....**5**
- 5(4) Body equal to or greater than 10 mm long; colour brightly metallic; head with vertex longitudinally impressed; tarsal claws simple.....**Fulcidax Voet** (Fig. 31)
- 5' Body less than 10 mm long; head with vertex not impressed; tarsal claws usually appendiculate (except *Exema* (from simple to appendiculate) .....**6**
- 6(5) Pronotum with six distinct, small, sharp, longitudinal carinae converging posteromedially, fan-like; color uniform, generally black .....**Aulacochlamys Monrós** (Fig. 28)
- 6' Pronotum with or without tubercles, but never with six longitudinal, fan-like carinae .....**7**
- 7(6) Head not completely retracted into the prothorax; mandibles in males larger than in females; intercoxal prosternal process strongly and abruptly constricted behind anterior margin; prosternal process more than 3/4 as long as intercoxal prosternal process (Fig. 2H) ...**Pseudochlamys Lacordaire** (Fig. 33)
- 7' Head completely retracted into prothorax; mandibles in males as large as in females; intercoxal prosternal process gradually constricted at about 2/3 of its length (Fig. 2I) .....**8**
- 8(7) Males without spines or spinulae on ventrite I; antennomere V nearly as long as VI; elytral suture crenulation usually incomplete (*i.e.*, suture entire immediately following scutellum) .....**Chlamisus Rafinesque** (Fig. 29)
- 8' Males with spines or spinulae on ventrite I; antennomere V much shorter than VI; elytral suture crenulation always complete.....**Exema Lacordaire** (Fig. 30)

**Clytrini**

- 9(3) Prothorax with lateral antennal grooves on hypomeron **Ischiopachina Chapuis** (Monotypic subtribe). Elytra without strong parallel longitudinal carinae; color metallic ..... **Ischiopachys Chevrolat** (Fig. 16)
- 9' Prothorax without lateral antennal grooves on edge of hypomeron ..... **10**
- 10(9) Tarsal claws simple ..... **12 (Megalostomina Chapuis)**
- 10' Tarsal claws bifid or appendiculate (Fig. 3A) ..... **11**
- 11(10) Scutellum flat, in the same horizontal plane as elytra; elytra without longitudinal carinae, frons distinct ..... **15 (Babiina Chapuis)**
- 11' Scutellum raised above elytral plane; elytra with strong parallel, longitudinal carinae; frons very narrow **Arateina Moldenke**; (monogeneric subtribe) .....  
.....**Aratea Lacordaire** (Fig. 4). (monogeneric subtribe)



**Figure 3.** Diagnostic characters plate 2. **A** Tarsal claws bifid or appendiculate **B** Frons with deep transverse sulcus. **C** Head forming straight angle with respect to pronotum **D** Head strongly directed downward, forming  $45^\circ$  angle with respect to pronotum **E** Posterior margin of pronotum broadly expanded, forming distinct scutellar lobe with angular corners (drawn after Monrós 1953a) **F** Pronotum margined at base, not crenulate **G** Pronotum not margined at base, crenulate.

- 12(10) Eyes entire or only slightly emarginate..... **13**
- 12' Eyes strongly emarginate..... *Megalostomis Chevrolat* (Fig. 19)
- 13(12) Scutellum foveate; body not metallic; pygidium with transverse subapical carina; aedeagus occupying entire abdominal length .....  
.....*Euryscopa (Coleomonrosa) Moldenke* (Fig. 18)
- 13'. Scutellum not foveate; body brilliant metallic, or with noticeable metallic reflections; pygidium without subapical transverse carina; aedeagus smaller, not occupying entire abdominal length..... **14**
- 14(13) Eyes elongate, not protruding; body robust, subquadrate.....  
.....*Themesia Lacordaire* (Fig. 20)
- 14' Eyes round and protruding; body elongate... *Coscinoptera Lacordaire* (Fig. 17)
- 15(11) Tarsal claws bifid; dorsum of body uniformly metallic; body lengthened .....  
.....*Helioscopa Gistel* (Fig. 9)
- 15' Tarsal claws appendiculate; dorsum of body not uniformly metallic; body compact..... **16**
- 16(15) Epipleural lobes very pronounced; angle of epipleural lobes rounded; elytra striae strongly impressed; dorsal coloration black, with omnipresent metallic bronze reflections..... *Saxinis (Saxinis) Lacordaire* (Fig. 13)
- 16' Epipleural lobes weakly developed, not angulate, no more than two striae wide; elytra striae not strongly impressed; dorsal coloration without bronze reflections..... **17**
- 17(16) Pygidium with transverse subapical angle, evenly bent perpendicular to longitudinal axis of body; epipleural lobe not well developed in lateral view ..... **18**
- 17' Pygidium flat, surface slightly convex, with tip sometimes bent; epipleural lobe distinctly rounded in lateral view..... **23**
- 18(17) Eyes feebly emarginate, distinctly projecting, conspicuously protruding at sides of head .....*Dinophthalma Lacordaire* (Fig. 8)
- 18' Eyes distinctly emarginate, not markedly projecting ..... **19**
- 19(18) Anterior margin of pronotum arcuate, entirely covering head from dorsal view; body shape elongate, cylindrical and flat; size large, greater than 10 mm long; frons flat; lateral margins of prothorax not widely explanate.....  
.....*Babia (Coleolacordairei) Moldenke* (Fig. 5)
- 19' Anterior margin of pronotum transverse or arcuate, but not concealing entire head from dorsal view ..... **20**
- 20(19) Body shape strongly cylindrical, elongate, not flattened; elytra not fully covering pygidium; elytral punctuation barely noticeable .....  
.....*Cylindrodachrys Monrós* (Fig. 6)
- 20' Body shape not cylindrical or elongate; elytra fully covering pygidium; elytral punctuation evident..... **21**
- 21(20) Frons strongly tapering, triangular, without transverse sulcus; body shape subquadrate; aedeagus with strong dorsal and ventral tufts of pubescence.....  
.....*Pnesthes Lacordaire* (Fig. 11)
- 21' Frons not strongly tapering below eyes, subrectangular, with length only slightly greater than width; aedeagus without pronounced ventral and dorsal

patches of setae, with only a few dorsal setae present.....  
.....**22. *Temnodachrys* Monrós** (Fig. 14)

22(21) Frons with deep transverse sulcus (Fig. 3B); body shape subrectangular.....  
.....***Temnodachrys* (*Temnodachrys*) Monrós**

22' Frons without deep transverse sulcus; body guttiform or minute and with  
subparallel sides ..... ***Temnodachrys* (*Eudachrys*) Monrós**

23(17) Body shape subcircular in outline; legs with longitudinal carinae; anterior  
pronotal margin strongly explanate and completely concealing head from  
dorsal view ..... **24**

23' Body shape subrectangular, sides subparallel; legs without longitudinal cari-  
nae; anterior margin of pronotum never concealing all of head in dorsal  
view ..... **27**

24(23) Forelegs longer (especially in males) than mid- and hind legs; tarsomere III  
enlarged, shallowly excavated; head less reflexed, 90° with respect to proster-  
num (Fig. 3C) ..... ***Stereoma* Lacordaire** (Fig. 12)

24' All legs with similar development; tarsomere III narrow, deeply excavated; head  
more reflexed, forming 45° angle with respect to prosternum (Fig. 3D).....  
..... **25. *Urodera* Lacordaire** (Fig. 15)

25(24) Posterior margin of pronotum broadly expanded, forming distinct scutellar  
lobe with angular corners (Fig. 3E) ..... ***Urodera* (*Austrurodera*) Moldenke**

25' Posterior margin of pronotum not broadly expanded and not forming a  
scutellar lobe with angular corners ..... **26**

26(25) Front tibiae with indistinct posterolateral carinae, with surface not deeply  
excavate and reflective between carinae; frons of male with three shallow de-  
pressions ..... ***Urodera* (*Urodera*) Lacordaire**

26' Front tibiae with strong posterolateral carinae, with surface deeply excavate  
and reflective between carinae; frons of male with deep medial depression....  
..... ***Urodera* (*Stereomoides*) Moldenke**

27(23) Pronotum with weak metallic green reflections; antennomere IV much small-  
er than V; frons wide, with width greater than or subequal to length; frons  
without medial pit ..... **28. *Paraurodera* Moldenke.** (Fig. 10).

27' Pronotum without metallic reflections; antennomere IV subequal in size to  
V; frons narrow, with length more than twice width; frons with deep medial  
pit..... ***Dachrys* Erichson** (Fig. 7)

28(27) Anterior margin of pronotum transverse, not concealing head at all in dorsal  
view; frons with submedial depressions; sexual dimorphism of frons extreme,  
the male having extremely wide frons and elongate mandibles.....  
..... ***Paraurodera* (*Torourodera*) Moldenke**

28' Anterior margin of pronotum explanate and partially concealing head; frons  
with medial and two submedial depressions; sexual dimorphism reduced,  
with frons and mandibles similarly developed in male and female.....  
..... ***Paraurodera* (*Paraurodera*) Moldenke**



**Cryptocephalini**

- 29(3) Claws simple or, if appendiculate, intercoxal prosternal process longer than wide to subquadrate..... **30**
- 29' Claws appendiculate, each with broad, basal tooth; intercoxal prosternal process wider than long..... **31. Monachulina Leng**
- 30(29) Pronotum margined at base (except in *Mylassa*), not crenulate (Fig. 3F)..... **32 (Pachybrachina Chapuis)**
- 30' Pronotum not margined at base, usually crenulate (Fig. 3G) (**Cryptocephalina Gyllenhal**). Eyes with distinct excavation on internal margin; dorsum glabrous; male front tibiae with reduced sexual dimorphism; posterior pronotal margin not produced ..... **Cryptocephalus Geoffroy** (Fig. 21)
- 31(29) Anterior margin of pronotum simple, arcuate; pronotal punctures distinct throughout; intercoxal prosternal process bilobed, with small lateral projections; anterior margin of prosternum uniformly concave; pronotal anterior opening circular ..... **Lexiphanes Gistel** (Fig. 22)
- 31' Anterior margin of pronotum produced; pronotal punctures absent; intercoxal prosternal process truncate; anterior margin of prosternum with one or two medial flanges; pronotal anterior opening ventrally widened ..... **Stegnocephala Baly** (Fig. 23)
- 32(30) Eyes small, bulging, with canthus shallow..... **33**
- 32' Eyes large, extending dorsad beyond upper third of head, usually with upper half of eye larger than ventral half; canthus deep, extending approximately 1/4 distance into eye; posterior margin of pronotum (directly opposite scutellum) not produced posteriorly, margined with basal row of punctures, bisinuate; scutellum not heart-shaped ..... **34**
- 33(32) Dorsal surface generally setose; pronotum greatly vaulted, with lateral margins narrow; pronotum medially lobed posteriorly, lobe elevated and truncate; scutellum heart-shaped ..... **Mylassa Stål** (Fig. 26)
- 33' Dorsal surface glabrous; pronotum regularly convex, with lateral margins prominent, visible from above, with posterior margin regularly biconcave, with mesobasal region regularly rounded and slightly produced posterad; scutellum with posterior margin truncate.... **Ambrotodes Suffrian** (Although this genus has not been yet reported from Argentina, we include it in this key because its species are common along the eastern border of the Andes in Chile.)
- 34(32) Posterior margin of intercoxal prosternal process convex, produced beyond posterior margin of prothorax; mesotibial spurs present or absent; body robust; punctures not deep or large, particularly on pronotum; dorsal surface shiny..... **35**
- 34' Posterior margin of intercoxal prosternal process straight, rarely produced beyond posterior margin of prothorax; gestalt cylindrical (height of each elytron approximately 2.5 width), pronotum narrower than elytral bases combined,



- overall flattened not vaulted; punctures on head, prothorax and elytra evident, large; elytral punctation commonly confused (but punctation in rows not uncommon); forefemora enlarged or not; each mesotibia usually with terminal spur in both sexes ..... ***Pachybrachis Chevrolat*** (Fig. 27)
- 35(34) Posterior margin of intercoxal prosternal process rounded; lateral margin of elytra deeply excised, exposing abdomen caudally; elytra length approximately 2× or less length of pronotum ..... ***Griburius Haldeman*** (Fig. 24)
- 35<sup>5</sup> Posterior margin of intercoxal prosternal process gradually narrowing, pointed; lateral edge of elytra not deeply excised; abdomen not exposed; elytral length greater than 2× length of pronotum ... ***Metallactus Suffrian*** (Fig. 25)

### Cryptocephalinae Gyllenhal, 1813

*Adults*: Body cylindrical, or rarely as long as wide; in dorsal view parallel-sided with prothorax mostly as wide as combined elytral bases; rarely body rounded; multicolored and patterned, particularly Cryptocephalini, black with red humeri commonly in Clytrini, brown, black, straw-yellow and some with velvet spots in Fulcidacini, glabrous to pubescent, particularly Clytrini. Head retracted into prothorax up to frons or almost completely, with compound eyes completely to barely visible from above. Compound eyes entire, level to strongly protuberant; canthus weak to deep. Antennae 11-segmented, longer than pronotum and filiform in Cryptocephalini (sometimes antennomeres distally dilated and flattened), shorter than pronotum and dentate in Clytrini, clavate in Fulcidacini. Pronotum about 0.75–1.0 times as long as wide, widest basally; sides slightly rounded or sinuate; base slightly narrower or as wide as combined elytral bases. Prosternum in front of coxae usually narrow and shorter than shortest diameter of a single coxal cavity, flat to moderately convex, sometimes produced to conceal mouthparts. Prosternal process complete, usually parallel-sided; notosternal sutures distinct. Procoxae not projecting below prosternum, without concealed lateral extensions; trochantins exposed within coxal cavity. Stridulatory device present on concealed part of mesoscutellum. Tarsi 5-5-5 in both sexes; penultimate tarsomere reduced and antepenultimate bilobed, all usually wider in males; tarsomere III densely clothed beneath with adhesive microtrichia; pretarsal claws simple to deeply bifid. Abdomen with five free ventrites and six tergites. Ventrite I more than twice as long as II, usually longer than ventrites II-IV combined, without postcoxal lines; intercoxal process narrowly rounded to almost truncate. Functional spiracles present on tergites I-VI. Tergite VI forming strongly pigmented pygidium, always exposed; anterior edge of sternite VIII in male without median strut. Ventrite V (=sternite VII) in females with variably-sized apical fovea. Males with segment IX membranous and spiculum gastrale Y-shaped. Aedeagus of cucujiform type; tegmen Y-shaped; struts (remnants of tergite IX) either present or absent; penis flattened to rounded, slightly to strongly curved apically; apically and/or laterally usually with tufts of setae. Sternite VIII in female lacking spiculum ventrale. Ovipositor short, rigid and oval

with distinct proctigeral, paraproctal, and coxital baculi; paraprocts deltoid, slightly shorter than undivided coxites, sclerotized or less pigmented proximally, flattened, digitate lobes of variable form, apically setose; styli absent. Spermatheca strongly to moderately sclerotized, variably shaped, usually J-, C-, or S-shaped. Rectal sclerites (rectal apparatus) present in female.

*Larvae:* J-shaped, generally protected by a case. According to Reid (1990, 1995), Agrain and Marvaldi (2009) and Chamorro (2014b), the following features characterize the subfamily Cryptocephalinae in the broad sense (*i.e.*, including Clytrini, Cryptocephalini and Fulcidacini), and are probably synapomorphies of cryptocephalines, by outgroup comparison with other chrysomeloids and weevils (Reid 1995, 2000): body J-shaped; frons, clypeus, and labrum fused; six stemmata, clustered 4 + 2; spiracles uniform with reticulate peritreme; egg bursters on TII and TIII and associated with a long and a short seta. Lamprosomatinae show a number of larval features in common with the cryptocephalines, being the body J-shaped among the most obvious (and related with their habit of carrying a case), as well as the fusion of frons, clypeus and labrum. Yet, unlike the cryptocephaline larvae, those of Lamprosomatinae have bicameral spiracles with peritreme simple, and five stemmata grouped 2 + 3. The maxillary palp 3-segmented plus the palpiger, as present in both groups, is likely a plesiomorphy, and although both subfamilies have egg-bursters confined to the meso- and metathorax, those in Lamprosomatinae lack the short ventral seta (Agrain and Marvaldi 2009, and references therein).

### Tribe Clytrini Kirby, 1837

#### Subtribe Arateina Lacordaire, 1848

**Diagnosis.** Same as for genus, see below.

#### *Aratea* Lacordaire, 1848

Fig. 4

Lacordaire 1848: 467; Chapuis 1874: 151; Jacoby and Clavareau 1906: 73; Guérin 1943: 86; Monrós 1953a: 261; Moldenke 1981: 88.

**Type species.** *Aratea costata* Lacordaire, 1848. By monotypy.

**Diagnosis.** This genus is easily recognized by the presence of strong parallel carinae on the elytra; other diagnostic characters include: frons very narrow; scutellum slanting posterodorsally, distinctly protruding from the plane of elytra; intercoxal prosternal process nearly absent between fore coxae; epipleural margin broadly angled, tip rounded; elytra without pubescence; frons with medial pit, densely and coarsely punctate throughout; and pygidium strongly convex.



**Figure 4.** *Aratea costata* Lacordaire <sup>(1)</sup>, left: habitus (dorsal view), right: habitus (lateral view).

**Distribution.** Only two species from Brazil, one present in Argentina, likely to also occur in Paraguay.

**Remarks.** Agrain and Roig-Juñent (2011), found eight autapomorphies for the genus, among them elytra with strongly marked longitudinal striae constitutes an exclusive synapomorphy to the genus.

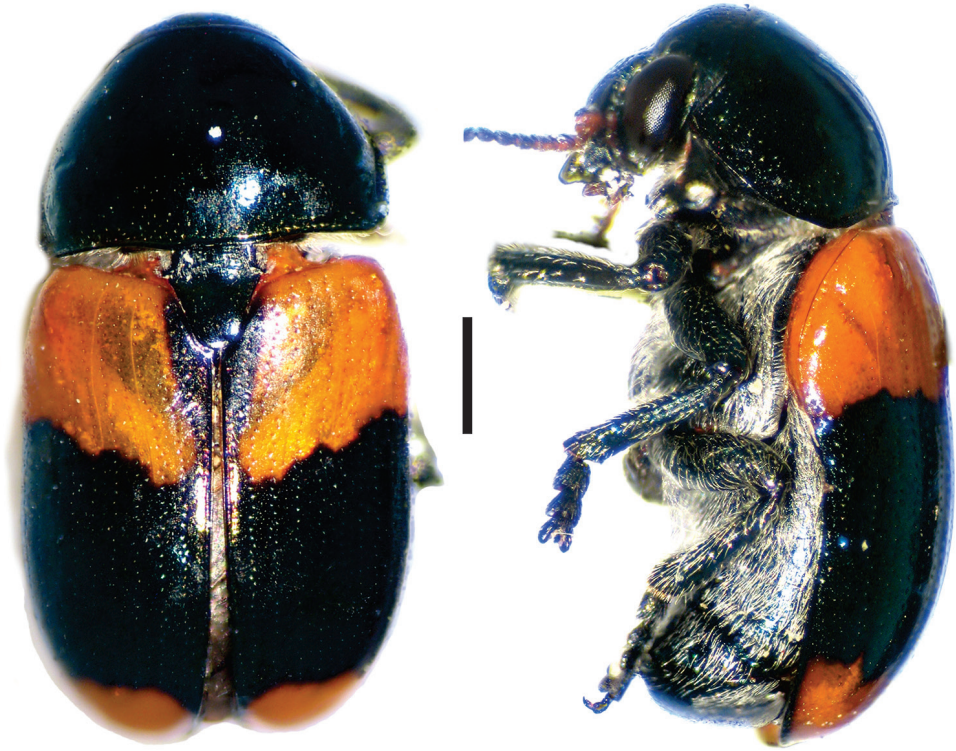
**Argentinian species checklist.**

1. *Aratea costata* Lacordaire, 1848 (FOR, MNS, SEO).

**Subtribe Babiina Chapuis, 1874**

***Babia* Chevrolat, 1836**

*Babia* Chevrolat in Dejean 1836: 441, 1842: 409 in d'Orbigny; Lacordaire 1848: 424–425; Chapuis 1874: 147; Jacoby 1880: 33; Jacoby and Clavareau 1906: 70; Clavareau 1913: 81; Schaeffer 1933: 319–320; Guérin 1943: 65–66; Monrós 1953a: 212–213, 1953b: 46; Moldenke 1970: 132, 1981: 103.  
= *Harpasta* Gistel, 1848: 123.



**Figure 5.** *Babia (Coleolacordairei) elongata* Guérin <sup>(1)</sup>, left: habitus (dorsal view), right: habitus (lateral view).

**Note.** Moldenke (1981), divided *Babia* into six subgenera based on morphological features, such as the general shape of the body, pronotal margin, frons and antennomere morphology: *Babia (Babia)* Chevrolat and *B. (Archaeobabia)* Moldenke from America north of Mexico; *Babia (Coleolacordairei)* Moldenke, *Babia (Heterobabia)* Moldenke, and *Babia (Megababia)* Moldenke from the Neotropical region. Only the monotypic *B. (Coleolacordairei)* is represented in Argentina.

***Babia (Coleolacordairei)* Moldenke, 1981**

Fig. 5

**Type species.** *Babia elongata* Guérin, 1945. By monotypy.

**Diagnosis.** This subgenus can be reliably diagnosed by the shape of anterior margin of pronotum, which is arcuate, and covers the entire head in dorsal view. Also, body shape is elongate (length 3x width), cylindrical and flat; frons is flat; lateral margin of prothorax not widely explanate.

**Distribution.** Brazil and Argentina.



**Remarks.** Moldenke (1981), mentioned the size of this species to be greater than 10 mm, but average size is smaller than 10 mm.

**Argentinian species checklist.**

1. *Babia (Coleolacordairei) elongata* Guérin, 1945 (BAS, COR, ERS, JUY, LRA, RNO, SAL, SFE, TUC). Host plant: Fabaceae: *Acacia* sp. (Monrós 1953a).

***Cylindrodachrys* Monrós, 1944**

Fig. 6

Monrós (1944: 148, 1953b: 148).

**Type species.** *Cylindrodachrys clerooides* Monrós (1944: 148).

**Diagnosis.** This genus exhibits a particular combination of three characters unique among Clytrini: adult body shape strongly cylindrically elongate; elytra not fully covering pygidium; and inconspicuous elytral punctations, thus superficially resembling a clerid.

**Distribution.** This monotypic genus is limited to Paraguay and north and central Argentina.

**Remarks.** According to Monrós (1944) this species has always been collected in extremely xeric places.

**Argentinian species checklist.**

- Cylindrodachrys clerooides* Monrós, 1944 (CAT, COR, MZA, SEO, SLS). Host plant: Solanaceae: *Solanum eleagnifolia* (Quillo); Malvaceae: *Gossypium hirsutum* (Monrós, 1953a).

***Dachrys* Erichson, 1847**

Fig. 7

Erichson 1847: 164; Lacordaire 1848: 405–406; Chapuis 1874: 146; Jacoby and Clavareau 1906: 68–69; Clavareau 1913: 80; Guérin 1943: 53–54; Monrós 1953a: 208–209, 1953b: 48–49; Moldenke 1970: 108.

**Type species.** *Dachrys succincta* (Erichson, 1834), designated by Monrós (1953b: 48).

**Diagnosis.** This genus resembles *Saxinis*, but is distinguished by the epipleural lobe not well developed and from *Temnodachrys* by the sides of the prothorax curved (strongly convergent towards the head); frons with deep medial pit; and distinct elytral pattern with transverse black bands on reddish base color.

**Distribution.** Austral region of Chile and Argentina.

**Remarks.** Monrós (1953b) separated the genera: *Saxinodachrys*, *Cylindrodachrys*, and *Temnodachrys*, formerly considered within *Dachrys*. Currently monotypic.



**Figure 6.** *Cylindrodachrys cleroides* Monrós <sup>(2)</sup>, left: habitus (dorsal view), right: habitus (lateral view).

**Argentinian species checklist.**

*Dachrys succincta* (Erichson, 1834) (CHU, NQN, RNO). Host plant: Rhamnaceae:

*Discaria* sp. (Monrós, 1953a) and *Chacaya trimereus* (Roig-Juñent, 2004).

= *Clythra succincta* Erichson, 1834.

= *Dachrys succincta* Lacordaire, 1848.

***Dinophthalma* Lacordaire, 1848**

Fig. 8

*Dinophthalma* Lacordaire 1848: 400; Chapuis 1874: 145; Jacoby and Clavareau 1906: 67; Guérin 1943: 47; Monrós 1953a: 143.



**Figure 7.** *Dachrys succincta* (Erichson)<sup>(1)</sup>, left: habitus (dorsal view), right: habitus (lateral view).

**Type species.** *Dinophthalma ophthalmica* Lacordaire, 1848 designated by Monrós (1953a: 143).

**Diagnosis.** Small body size (less than 7 mm). This genus is very similar to *Temnodachrys*, from which it can be easily separated by the extraordinary development of the eyes, which are protruding and reaching the lateral margins of the head. Also, antennae with antennomere III large, conical; pronotum transverse; elytra without callus.

**Distribution.** Brazil, Ecuador, Bolivia, Paraguay, and Argentina.

**Argentinian species checklist.**

*Dinophthalma amplicollis* Monrós, 1953 (MNS).

*Dinophthalma discicollis consimilis* Baly, 1877a (FOR, MNS).

= *Dinophthalma consimilis* Baly, 1877a.

= *Babia pallidipennis* Guérin, 1943.

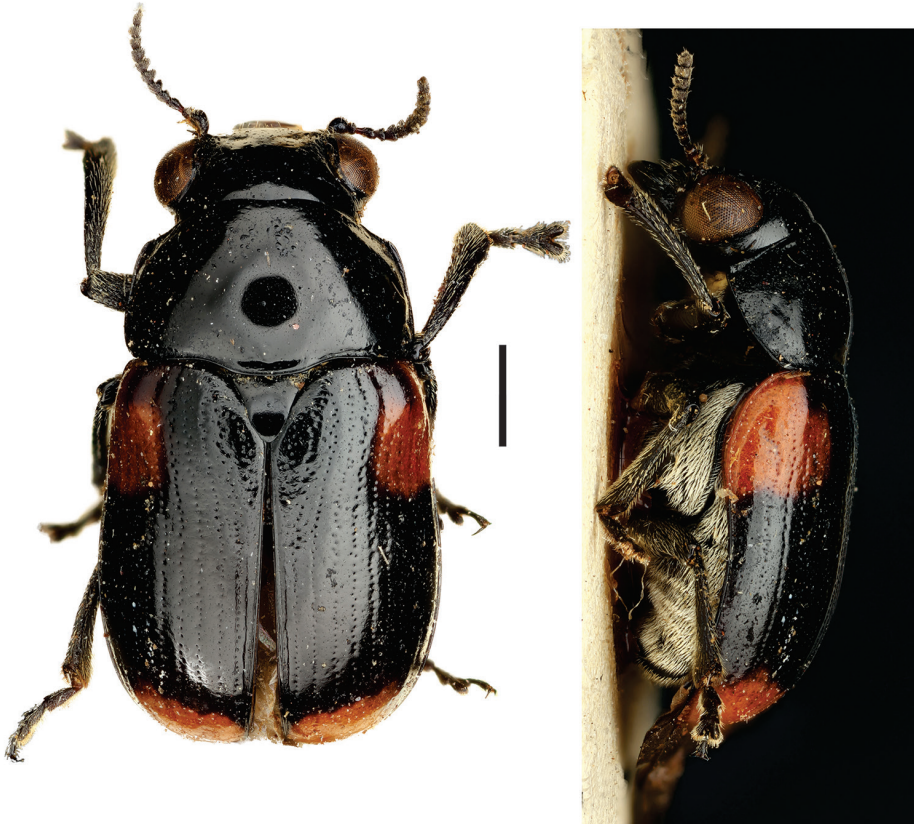
***Helioscopa* Gistel, 1848**

Fig. 9

*Helioscopa* Gistel: 1848: 123, Monrós and Bechyné 1956: 1122.

= *Acidalia* Chevrolat, 1836





**Figure 8.** *Dinophthalma amplicollis* Monrós <sup>(2)</sup>, left: habitus (dorsal view), right: habitus (lateral view).

= *Tellena* Lacordaire, 1848  
 = *Tellenina* Monrós, 1953a.

**Type species.** *Clythra varians* Sahlberg, 1823. By monotypy.

**Diagnosis.** body elongate, brilliant metallic, uniform green/blue coloration; and bifid tarsal claws. Also, antennae serrated from IV antennomere; pronotal margin slightly marginate; scutellum long, triangular, with round apex; legs long, with long tarsi, last tarsomere surpassing  $\frac{1}{2}$  the lobes of tarsomere III.

**Distribution.** Southern Brazil, Argentina and Paraguay. Only two subspecies of this genus have been cited in Argentina.

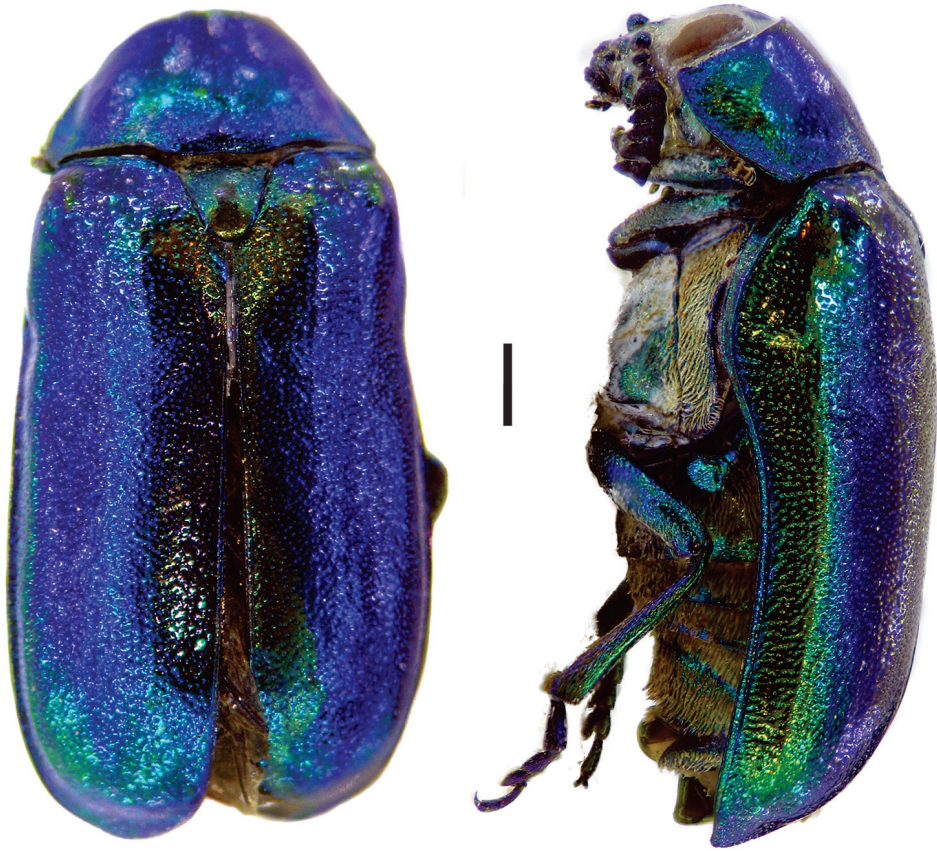
**Argentinian species checklist.**

1a. *Helioscopia varians varians* (Sahlberg, 1823) (MNS).

= *Clythra varians* Sahlberg, 1823.  
 = *Tellena varians* Lacordaire, 1848.

1b. *Helioscopia varians angusticollis* (Jacoby, 1897) (CHA, COR, JUY, MNS, SEO, TUC). Host plant: Boraginaceae: *Cordia salviflora*, Argentina / Monrós, (1953a).

= *Tellena angusticollis* Jacoby, 1897.



**Figure 9.** *Helioscopa varians varians* (Sahlberg)<sup>(1)</sup>, left: habitus (dorsal view), right: habitus (lateral view).

### *Paraurodera* Moldenke, 1981

Fig. 10

*Paraurodera* Moldenke (1981: 110).

**Note.** This genus was created by Andrew Moldenke (1981) to include seven species previously included in *Urodera*. Moldenke (1981) divided it into two subgenera as follows:

### *Paraurodera* (*Paraurodera*) Moldenke, 1981

**Type species.** *Paraurodera similis* Moldenke, 1981, by original designation.

**Diagnosis.** According to Moldenke (1981), this group can be separated from *Urodera* by the following combination of characters: subrectangular body shape, with



**Figure 10.** *Paraurodera (Paraurodera) haematifera* (Lacordaire)<sup>(1)</sup>, left: habitus (dorsal view), right: habitus (lateral view).

sides subparallel; anterior margin of pronotum never concealing entire head in dorsal view; legs without longitudinal carinae. Additional characters that may help distinguish this genus are: frons without strong sexual dimorphism; antennomere IV clavate, smaller than V; hind pronotal angles sinuate, perpendicular.

**Distribution.** Argentina, Brazil, Colombia, and Uruguay.

**Argentinian species checklist.**

*Paraurodera (Paraurodera) bergi* (Harold, 1875) (CHA, COR, CTS, LRA, MNS, MZA, SEO, SFE). Host plant: Fabaceae: *Acacia caven* (Mol.) Mol. (Viana and Williner 1972).

= *Stereoma bergi* Clavareau, 1913.

*Paraurodera (Paraurodera) haematifera densepunctata* Monrós, 1953a (CHA, COR, FOR, JUY, MNS, SAL).



*Paraurodera* (*Paraurodera*) *hamatifera hamatifera* (Lacordaire, 1848) (CHA, COR, CTS, ERS, FOR, LRA, MNS, MZA, SAL, SEO, SFE, SJN, SLS, TUC). Host plant: Fabaceae: *Prosopis* sp. (Monrós, 1953a), *Prosopis nigra* (Ward et al., 1977) and *Prosopis alpataco* (Roig-Juñent, 2004); *Acacia farnesiana* (Viana and Williner, 1974); *Hieronimus* sp. (Ward et al., 1977).

*Paraurodera* (*Paraurodera*) *inornata* (Monrós, 1953a) (CHA).

*Paraurodera* (*Paraurodera*) *similis* Moldenke, 1981 (JUY, SAL, FOR, CHA, MNS, SEO, TUC, CTS, COR, CAT, SFE, BAS, MZA). Host plant: Zygophyllaceae: *Zucagnia punctata* flowers (Roig-Juñent, 2004).  
= *Urodera vau* Monrós, 1953a (nec Lacordaire, 1848).

### *Paraurodera* (*Torourodera*) Moldenke, 1981

**Type species.** *Urodera fallax* Harold, 1875, designated subsequently by Moldenke (1981: 111).

**Diagnosis.** Anterior margin of pronotum not explanate; male head very conspicuous; frons with very strong sexual dimorphism, male mandibles prominent; antennomere IV much smaller than V; hind pronotal angles obtuse.

**Distribution.** This subgenus is endemic to Argentina.

#### Argentinian species checklist.

*Paraurodera* (*Torourodera*) *duplicata* (Monrós, 1953a) (CAT, CHA, COR, CTS, FOR, MNS, SEO, SFE, SLS). Host plant: Fabaceae: *Prosopis* sp. and *P. rucifolia* (Ward et al., 1977), *Prosopis alba* (Viana and Williner, 1974).

*Paraurodera* (*Torourodera*) *fallaciosa* (Monrós, 1953a) (COR, CTS, SFE, SLS).

*Paraurodera* (*Torourodera*) *fallax* (Harold, 1875) (BAS, CAT, CHA, COR, CTS, ERS, FOR, JUY, MNS, MZA, SAL, SEO, SFE, TUC). Host plants: Fabaceae: *Sesbania punicea*, and *S. virgata* (Monrós, 1953a); *Prosopis caldenia* (Aravena, 1940; 1974).

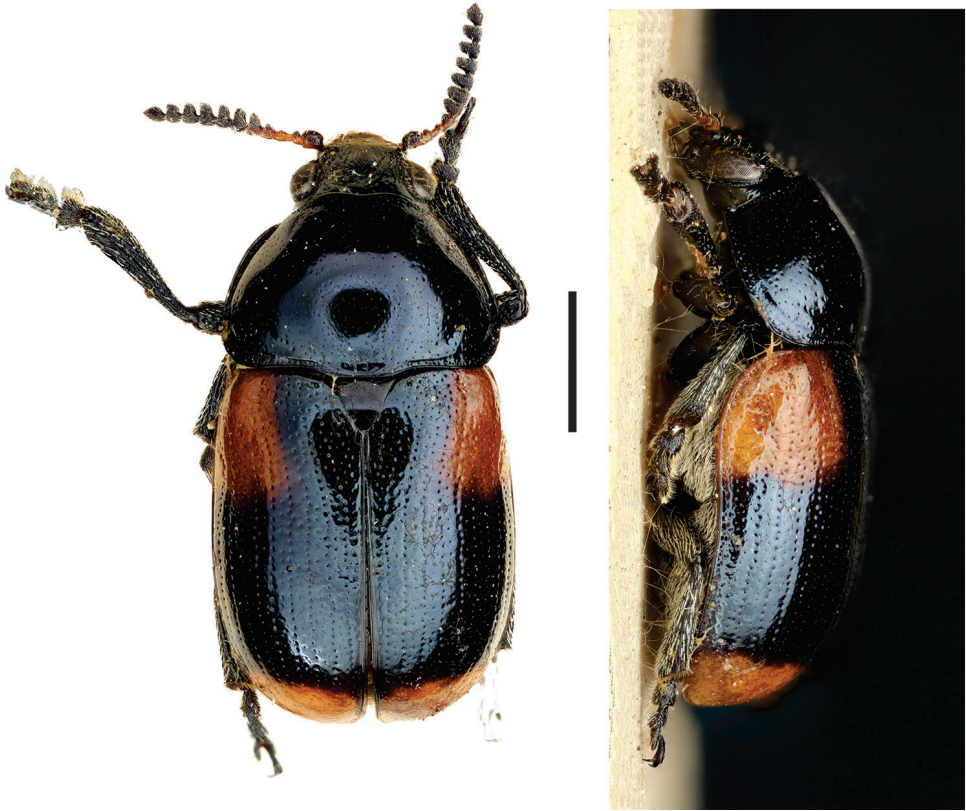
### *Pnesthes* Lacordaire, 1848

Fig. 11

Lacordaire (1848: 403); Chapuis (1874: 1–16); Jacoby and Clavareau (1906: 68); Guérin (1943: 51).

**Type species.** *Pnesthes ligata* Lacordaire designated by Monrós (1953a: 150).

**Diagnosis.** The most particular character to diagnose this genus is the shape of the head, which is anteriorly prolonged, strongly tapering and triangular. Other diagnostic characters are: elongate body, shiny and glabrous; eyes moderately salient; pronotal base lobate; scutellum long and triangular.



**Figure 11.** *Pnesthes instabilis minuta* Monrós <sup>(2)</sup>, left: habitus (dorsal view), right: habitus (lateral view).

**Distribution.** Two species from Brazil, one of these with a subspecies in North-eastern Argentina which was separated from the typical form by Monrós (1953a) on the basis of its smaller size and distinct punctuation.

**Argentinian species checklist.**

*Pnesthes instabilis minuta* Monrós, 1953a (MNS, SFE).

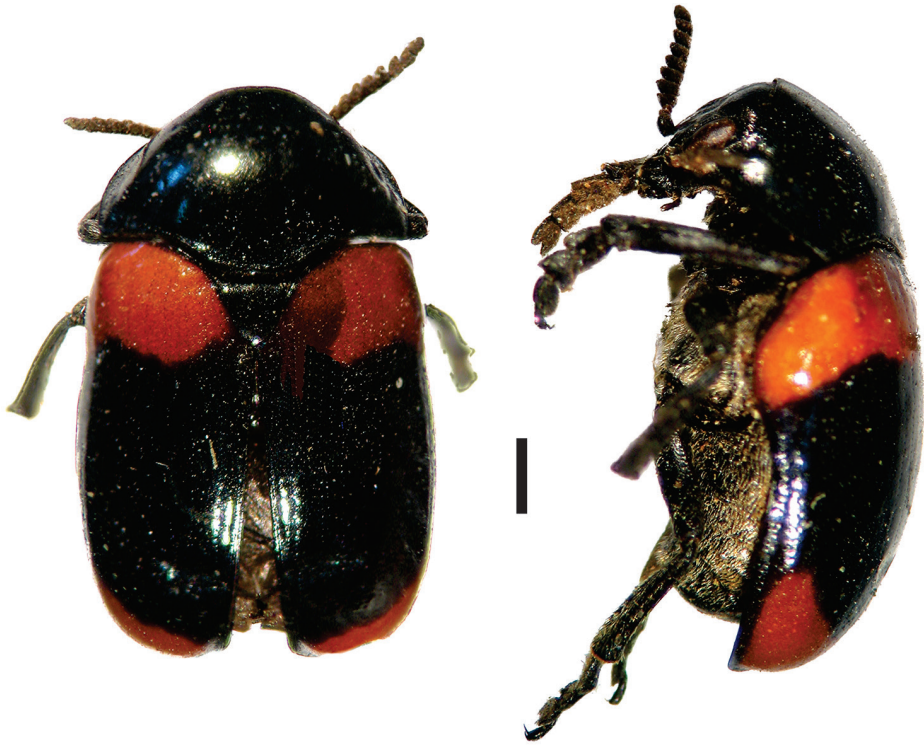
***Stereoma* Lacordaire, 1848**

Fig. 12

*Stereoma* Lacordaire 1848: 437; Chapuis 1874: 148; Jacoby 1880: 34; Jacoby and Clavareau 1907: 71; Guérin 1943: 72; Monrós 1953a: 215; Moldenke 1981: 107.

**Type species.** *Stereoma clitellata* Lacordaire, designated by Monrós (1953a): 215.

**Diagnosis.** Sexually dimorphic, with males having enlarged forelegs; head completely concealed within prothorax; mesosternum broad; tarsal segments very transverse, tarsomere III cleft  $\frac{1}{2}$  length to receive IV; tarsomere IV notoriously short and



**Figure 12.** *Stereoma clitellata clitellata* Lacordaire <sup>(1)</sup>, left: habitus (dorsal view), right: habitus (lateral view).

thick; frons with prominent transverse sulcation; lateral margin of pronotum broadly explanate, hind angles broadly rounded. This genus is closely related to *Urodera*, from which it can be separated by the conspicuous development of the legs, since the latter is much larger in males and females compared to *Urodera*.

**Distribution.** Seven species and four subspecies are known from Argentina, another 10 species are known from Meridional America (southern part of South America).

**Remarks.** *Sesbania virgata* (Fabaceae) has been cited as a hostplant for *Stereoma* sp. in Argentina (Monrós 1953a).

#### Argentinian species checklist.

*Stereoma anchoralis* Lacordaire, 1848 (COR).

*Stereoma angularis* Lacordaire, 1848 (MNS).

3a. *Stereoma clitellata burmeisteri* Harold, 1875 (CHA, COR, FOR, JUY, LRA, MNS, SAL, SEO, SFE, TUC).

= *Stereoma burmeisteri* Harold, 1875.

3b. *Stereoma clitellata clitellata* Lacordaire, 1848 (CHA, CTS, FOR, MNS, SFE).

Host plant: Fabaceae: *Acacia decurrens* (Monrós, 1953a).

3c. *Stereoma clitellata concolor* Lacordaire, 1848 (JUY, SAL, SEO).

= *Stereoma concolor* Lacordaire, 1848.

4a. *Stereoma laevicollis bosqui* Monrós, 1953a (SFE).

- 4b. *Stereoma laevicollis laevicollis* (Harold, 1875) (CAT, CHA, FOR, JUY, LRA, SAL, SEO, SLS). Host plant: Fabaceae: *Cassia aphylla* (Viana & Williner, 1974). = *Urodera laevicollis* Harold, 1875.
- 4c. *Stereoma laevicollis orophila* Monrós, 1953a (JUY, SAL, TUC).
5. *Stereoma obesa* Monrós, 1953a (SEO).
6. *Stereoma seenoi* Moldenke, 1981 (JUY). [Moldenke (1981), mistakenly cited this species from (Jujuy: Bolivia), it belongs to Jujuy: Argentina.].

### ***Saxinis* Lacordaire, 1848**

*Saxinis* Lacordaire 1848: 478–79; Chapuis 1874: 150; Jacoby 1880: 36–37; Horn 1892: 8; Jacoby and Clavareau 1906: 74; Clavareau 1913: 84; Guérin 1943: 88; Blackwelder 1946: 639; Monrós 1953a: 257–258; Moldenke 1970: 154, 1981: 106.

**Note.** Moldenke (1981) erected *Saxinis* (*Boreosaxinis*) to include North American species. The other four species of *Saxinis* are included in the nominotypic subgenus and distributed in Central and South America, with only one species described from Argentina.

### ***Saxinis* (*Saxinis*) Lacordaire, 1848**

Fig. 13

Moldenke 1981: 106.

**Type species.** *Saxinis sagittaria* Lacordaire, 1848, designated by Monrós (1953a: 257).

**Diagnosis.** This group can be easily distinguished from all other members of this subtribe by the very large and generally pointed epipleurae. South American species exhibit a black dorsal coloration always with metallic bronze reflections.

**Distribution.** Usually found in Central and South America.

#### **Argentinian species checklist.**

*Saxinis* (*Saxinis*) *meridionalis* Monrós, 1953a (BAS, CHA, COR, ERS, FOR, JUY, LPA, LRA, MZA, SAL, TUC).

### ***Temnodachrys* Monrós 1953b**

Fig. 14

*Dachrys* Lacordaire, 1848 (part)

*Temnodachrys* Monrós 1953a: 153–15, 1953b: 48–49; Moldenke 1970: 109, 1981: 107.

**Note.** Monrós (1953b) divided this diverse genus (more than 60 species) into two subgenera based on the presence of a deep transverse sulcus in the interocular region.





**Figure 13.** *Saxinis (Saxinis) meridionalis* Monrós<sup>(2)</sup>, left: habitus (dorsal view), right: habitus (lateral view).

### *Temnodachrys (Eudachrys) Monrós, 1953*

**Type species.** *Temnodachrys cruciata* (Lacordaire, 1848), designated by Monrós (1953b: 49).

**Diagnosis.** Frons without deep transverse sulcus; body minute, drop-like shaped with sides subparallel.

**Distribution.** This subgenus has over 60 species and is distributed from Mexico to Argentina and Chile, 22 species have been cited for Argentina.

#### **Argentinian species checklist.**

- 1a. *Temnodachrys (Eudachrys) complexa complexa* (Lacordaire, 1848) (BAS, CHA, CTS, ERS, MNS, SEO, SFE, TUC). Host plant: Rosaceae: *Rosa* sp. (Roses) (Monrós 1953a).
- 1b. *Temnodachrys (Eudachrys) complexa pallipes* Monrós, 1953a (BAS, CTS, FOR, MNS, SFE).



**Figure 14.** *Temnodachrys* (*Temnodachrys*) *aeneofasciata* (Lacordaire)<sup>(1)</sup>, left: habitus (dorsal view), right: habitus (lateral view).

*Temnodachrys* (*Eudachrys*) *cruciata* (Lacordaire, 1848) (BAS, COR, MNS, MZA, SEO, SFE). Host plant: Asteraceae: *Eryngium* sp. (Monrós, 1953a).

*Temnodachrys* (*Eudachrys*) *decolorata* Monrós, 1953a (SEO).

*Temnodachrys* (*Eudachrys*) *haywardi* Monrós, 1953a (NQN).

*Temnodachrys* (*Eudachrys*) *impressifrons* Monrós, 1953a (SFE).

*Temnodachrys* (*Eudachrys*) *lacordairei* Monrós, 1953a (JUY, SAL).

*Temnodachrys* (*Eudachrys*) *laeta* (Lacordaire, 1848) (JUY, MNS).

*Temnodachrys* (*Eudachrys*) *longipennis* (Guérin, 1943) (FOR, MZA).

*Temnodachrys* (*Eudachrys*) *manca* (Harold, 1875) (COR, MZA, SEO).

= *Urodera manca* Clavareau, 1913.

*Temnodachrys* (*Eudachrys*) *monticola* Monrós, 1953a (TUC).

*Temnodachrys* (*Eudachrys*) *oyaguava* Monrós, 1953a (COR, MNS).

*Temnodachrys* (*Eudachrys*) *punctipennis* (Monrós, 1951b) (MNS).

*Temnodachrys* (*Eudachrys*) *puntana* Monrós, 1953a (COR, MZA, SLS). Host plant: Fabaceae: *Cercidium praecox* (Ruiz & Pavon ex Hook.) Harms; (Roig-Juñent 2004).

*Temnodachrys (Eudachrys) pygmaea* Monrós, 1953a (JUY).

*Temnodachrys (Eudachrys) sympathica* Monrós, 1953a (CHA, COR, SEO).

*Temnodachrys (Eudachrys) taeniatooides* Monrós, 1953a (MNS).

*Temnodachrys (Eudachrys) trisignata* (Lacordaire, 1848) (COR, JUY, SEO, TUC).

*Temnodachrys (Eudachrys) trivirgata* (Lacordaire, 1848) (CAT, SAL). Host plant: Asterales (Monrós 1947).

*Temnodachrys (Eudachrys) vianai* Monrós, 1953a (MNS).

*Temnodachrys (Eudachrys) willinki* Monrós, 1953a (CHA, COR, FOR, MNS, MZA, SAL, SEO, SFE, TUC). Host plant: Fabaceae: *Prosopis* sp. (Monrós, 1953a).

*Temnodachrys (Eudachrys) wygodzinskyi* Monrós, 1953a (JUY).

*Temnodachrys (Eudachrys) xerophila* Monrós, 1953a (FOR, SEO, LRA, COR, SLS). Host plant: Solanaceae: *Solanum eleagnifolia* Cav. (Quillo) (Monrós, 1953a).

### ***Temnodachrys (Temnodachrys) Monrós, 1953***

**Type species.** *Temnodachrys aeneofasciata* (Lacordaire, 1848), designated by Monrós (1953b: 49).

**Diagnosis.** Frons with deep transverse sulcus; body shape subrectangular.

**Distribution.** Seven species, from northern Brazil (one species) to central Argentina (six species).

**Remarks.** The characters mentioned by Guérin (1952) in the original description of *Dachrys argentina*, are sufficient to transfer this species to this subgenus. The author mentioned the presence of a deep transverse sulcus in interocular region. Secondly, sides of the prothorax are much less convergent than expected and pronotal and elytral coloration pattern does not fit *Dachrys*. In addition, distribution of *Dachrys* is limited to Chile and southern Argentina, while Jujuy is the northernmost province. Finally, Guérin indicated the similarity with *T. (T.) signatipennis* (Lacordaire), and *Dachrys gracilis* Harold [= *T. (T.) aeneofasciata* (Lacordaire)].

#### **Argentinian species checklist.**

*Temnodachrys (Temnodachrys) argentina* (Guérin, 1952), **comb n.** (JUY).

= *Dachrys argentina* Guérin, 1952.

*Temnodachrys (Temnodachrys) aeneofasciata* (Lacordaire, 1848) (BAS, CHA, COR, CTS, ERS, FOR, JUY, LPA, MNS, MZA, NQN, SAL, SEO, SFE, TUC).

Host plant: Fabaceae: *Sesbania marginata*, *Sesbania virgata*, and *Prosopis Algarrobilla* (Monrós 1953a); *Prosopis caldenia* (Aravena 1974); *Prosopis affinis* (Monrós 1953a).

= *Dachrys gracilis* Harold, 1875.

= *Dachrys aeneofasciata* Lacordaire, 1848.

*Temnodachrys (Temnodachrys) aphodiodes* (Lacordaire, 1848) (BAS, COR, ERS, LPA, MNS, SFE). Host plant: Fabaceae: *Mimosa farinosa* (Monrós 1953a).

*Temnodachrys (Temnodachrys) hybrida* Monrós, 1953a (ERS).

*Temnodachrys* (*Temnodachrys*) *neffi* Moldenke, 1981 (CAT). Host plant: Fabaceae: *Prosopis torquata* (Cavanilles ex Lagasca) D.C., *Prosopis chilensis* (Molina) Stuntz emend.; *Mimosa farinose* Griseb, *Mimosa ephedroides* (Gillies ex Hook. & Arn.) Benth.

*Temnodachrys* (*Temnodachrys*) *pauperrima* Monrós, 1953a (JUY, SAL, CHA, LRA).

*Temnodachrys* (*Temnodachrys*) *quichua* Monrós, 1953a (JUY, SAL).

*Temnodachrys* (*Temnodachrys*) *signatipennis* (Lacordaire, 1848) (JUY, SAL, FOR, MNS, TUC, SEO, CAT, COR, LRA, CTS, SFE, SLS, BAS). Host plants: Fabaceae: *Acacia caven* (Mol.) Mol. (Monrós 1953a); *Piptadenia macrocarpa* Benth and *Piptadenia cebil* (Griseb.) (Jolivet, 1978); *Sesbania virgata* (Cav.) Argentina / (Monrós 1953a); *Anadenanthera colubrina var cebil* (Vell. Conc.) Brenan Argentina / (Jolivet 1978; Hayward 1944).

### ***Urodera* Lacordaire, 1848**

Fig. 15

*Urodera* Lacordaire 1848: 449; Chapuis 1874: 149; Jacoby 1880: 34–35; Jacoby and Clavareau 1906: 72; Clavareau 1913: 83; Leng 1920: 288; Guérin 1943: 80–81; Blackwelder 1946: 638; Monrós 1953a: 232–233; Moldenke 1970: 114, 1981: 112.

**Note.** Moldenke (1981) divided this genus into five subgenera (including the nominotypic one). Two of these subgenera are present in Argentina, plus two species regarded by Moldenke (1981) as *incertae sedis*.

### ***Urodera* (*Austrurodera*) Moldenke, 1981**

Moldenke 1981: 113.

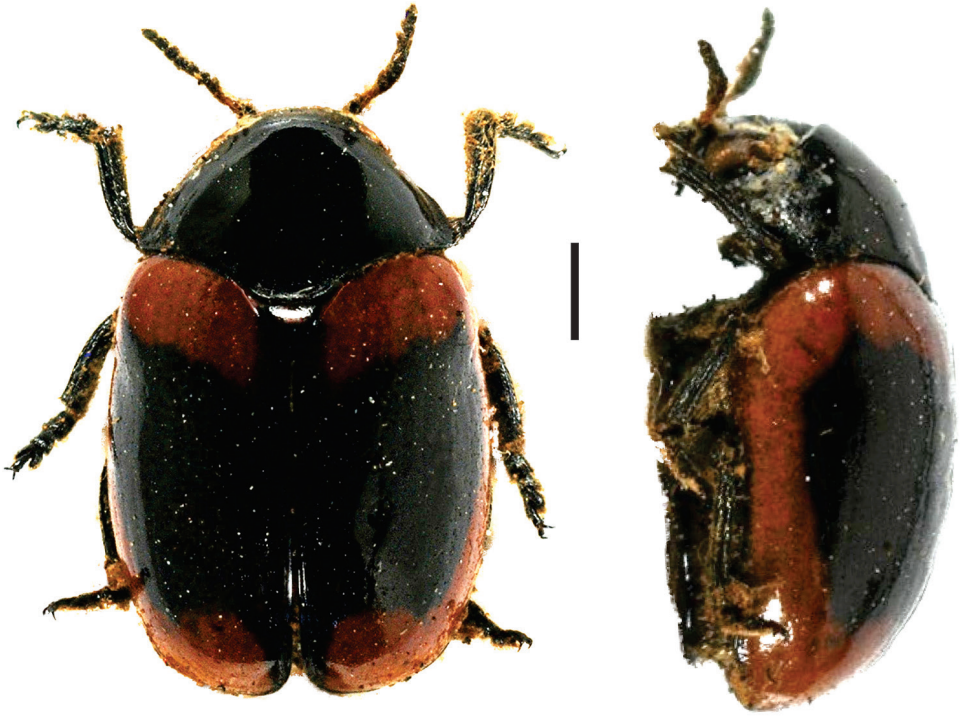
**Type species.** *Urodera quadrisignata* Lacordaire, 1848, designated by Moldenke (1981: 113).

**Diagnosis.** Posterior margin of pronotum broadly expanded, forming distinct scutellar lobe usually bounded by acute angles; scutellum posteriad humeral callus, scutellum nearly as long as length of posterior lobe of pronotum; aedeagus with broad weakly-sclerotized dorsal medial flap.

**Distribution.** Argentina, Brazil, Colombia, Costa Rica, Guatemala, Panama, Paraguay, and Venezuela.

**Remarks.** Moldenke (1981) subdivided this subgenus into two groups. Argentinian species belong to type II group, which are characterized by having protibiae twice carinate on posterolateral surface; and antennomere IV  $\frac{1}{3}$  -  $\frac{3}{4}$  times width of V.





**Figure 15.** *Urodera (Austrurodera) circumcincta circumcincta* Lacordaire <sup>(3)</sup>, left: habitus (dorsal view), right: habitus (lateral view).

#### Argentinian species checklist.

- 1a. *Urodera (Austrurodera) circumcincta circumcincta* Lacordaire, 1848 (MNS, CTS, CHA, JUY).
- 1b. *Urodera (Austrurodera) circumcincta circumducta* Lacordaire, 1848 (MNS, CTS, CHA).  
= *Urodera circumducta* Lacordaire, 1848
2. *Urodera (Austrurodera) monrosi* Moldenke, 1981 (MNS).

#### *Urodera (Stereomoides) Moldenke, 1981*

Moldenke 1981: 114.

**Type species.** *Stereoma tetraspilota* Lacordaire, 1848, designated by Moldenke (1981: 113).

**Diagnosis.** Scutellum length 1.5x or more than length of posterior lobe of pronotum; frons of male with deep medial depression; dorsal region of aedeagus with very prominent row of setae, no cleft, ventral lobe absent, apex of aedeagus extraordinarily truncate.

**Distribution.** Argentina, Bolivia, Brazil, Paraguay, and Peru.

**Argentinian species checklist.**

*Urodera (Stereomoides) neffi* Moldenke, 1981 (CAT). Host plant: Asteraceae: *Baccharis* sp.

*Urodera (Stereomoides) tetraspilota* (Lacordaire, 1848) (MNS, SAL).  
= *Stereoma tetraspilota* Lacordaire, 1848.

***Urodera incertae cedis* by Moldenke (1981)**

1. *Urodera lanuginosa* Monrós, 1953a (SEO, SFE).
2. *Urodera crucifera crucifera* Lacordaire, 1848 (*sensu* Monrós) (JUY, SAL, TUC).  
= *Urodera hoepfneri* Lacordaire, 1848.  
= *Urodera chevrolati* Lacordaire, 1848.

**Subtribe Ischiopachina Chapuis, 1874**

As mentioned above, further studies are necessary to clarify the relationships of Arateina and Ischiopachina with the remaining subtribes.

***Ischiopachys* Chevrolat, 1836**

Fig. 16

*Ischiopachys* Chevrolat in Dejean 1836: 440; Lacordaire 1848: 468–469; Chapuis 1874: 153; Jacoby 1880: 37; Jacoby and Clavareau 1906: 75–76; Clavareau 1913: 85; Guérin 1943: 90; Blackwelder 1946: 639; Monrós 1953a: 263–264, 1953b: 46; Moldenke 1970: 190.

**Type species.** *Ischiopachys bicolor* (Olivier, 1791), designated by Monrós (1953b: 46).

**Diagnosis.** This genus has several diagnostic characters that clearly separate it from all other Neotropical Clytrini: scutellum inclined posterodorsally, distinctly protruding from the plane of elytra; intercoxal prosternal process nearly absent between fore coxae; epipleural margin broadly angled, tip rounded; elytra without pubescence; frons with medial pit, densely and coarsely punctate throughout; pygidium strongly convex; pronotum with lateral margins sulcate to receive antennae in repose; dorsum brilliant metallic.

**Distribution.** From Mexico to Argentina.

**Argentinian species checklist.**

- 1a. *Ischiopachys cribipennis cribipennis* Lacordaire, 1848 (CTS). Host plant: *Sfolocalyx?* and *curupatí* (Monrós, 1953a).



**Figure 16.** *Ischiopachys cribipennis cribipennis* Lacordaire <sup>(2)</sup>, left: habitus (dorsal view), right: habitus (lateral view).

- 1b. *Ischiopachys cribipennis micans* Lacordaire, 1848 (CHA, CTS, ERS, FOR, JUY, MNS, SAL, SEO, SFE, TUC). Host plants: Fabaceae: *Prosopis* sp.; *Piptadenia* sp.; *Caesalpinia* sp.sp. (Monrós, 1953a). Rutaceae: *Citrus* sp. (Naranjo) (Monrós, 1953a).

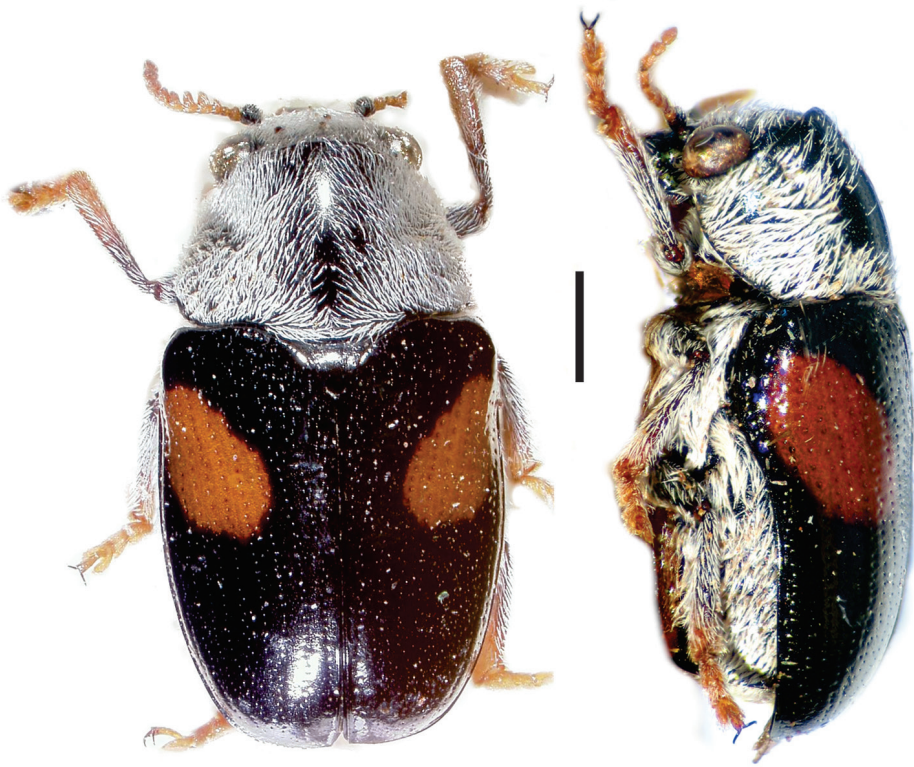
*Ischiopachys micans* Lacordaire, 1848.

2. *Ischiopachys empyrea empyrea* Lacordaire, 1848 (TUC, SAL).  
= *Ischiopachys empyrea smaragdina* Monrós, 1953a.

#### Subtribe Megalostomina Chapuis, 1874

Major classification changes in Megalostomina were implemented based on the development of sexual dimorphic characters, especially as they relate to head modifications in males (Agrain and Roig-Juñent 2011). The monophyly of the subtribe is well supported by a set of synapomorphies, including external morphology and genitalia (Agrain and Roig-Juñent 2011).





**Figure 17.** *Coscinoptera albopilosa* (Monrós) <sup>(1)</sup>, left: habitus (dorsal view), right: habitus (lateral view).

### *Coscinoptera* Lacordaire, 1848

Fig. 17

*Coscinoptera* Lacordaire 1848: 511; Chapuis 1874: 139; Jacoby 1880: 31; Horn 1892: 12–13; Jacoby and Clavareau 1906: 62–63; Clavareau 1913: 77; Leng 1920: 288; Guérin 1943: 32–33; Blackwelder 1946: 637; Monrós 1951a: 1150–1151; Monrós 1953a: 114–115; Moldenke 1970: 41, 1981: 89.

**Type species.** *Coscinoptera desmiphora* Lacordaire, 1848, designated by Monrós (1953a: 114).

**Diagnosis.** This genus can be separated from *Euryscopa* by the lack of bilobed lacinia and the elytra with confused punctation, in some cases exceedingly coarsely and deeply punctate. Other useful diagnostic characters are: head moderately prominent, covered with dense fine punctation and silky pubescence; male head as long as wide; eyes round and salient; prothorax transverse, pronotal disc as high as long; scutellum often coarsely punctate and always with dense white pubescent; elytra either metallic unicolored and glabrous or black; ventrites usually covered with exceedingly dense white pubescence; female anal pit normally small and only moderately depressed.

**Distribution.** USA to Argentina.

**Remarks.** As for other groups within Clytrini, it is in need of modern taxonomic revision. Several species groups have been proposed, but their monophyly has not yet been tested. Monrós (1953a), split this genus into two informal species groups, mainly based on sexual dimorphism evident in male heads. Moldenke (1970) proposed six informal species groups. Subsequently, Moldenke (1981) preserved only three of his earlier groups and transferred some species to two new genera (*Coleorozena* and *Coleothorpa*). More recently, Agrain and Roig-Juñent (2011), recovered a monophyletic clade (sister to *Megalostomis*), containing the type species of *Coscinoptera*, *Coleorozena*, and *Coleothorpa*. This clade is supported by two synapomorphies: male head as long as wide, and pronotal disc as high as long. Consequently, the latter two genera were synonymized with *Coscinoptera*. Some North American species are found in the nests of ant genera *Camponotus* Mayr and *Formica* Linnaeus. Moldenke (1981) divided this genus into three species groups and he indicated three species to be present in Argentina: *Coscinoptera euryscopoides* Monrós, and *Coscinoptera terebellum* Lacordaire within group II; and *Coscinoptera tibialis* Harold within group III.

**Argentinian species checklist.**

1. *Coscinoptera albopilosa* (Monrós, 1953a) (BAS, CHA, COR, ERS, MNS, SEO, SFE). Host plant: Asteraceae: *Baccharis* sp. (branches). Zygofilaceae: on flowers (Monrós, 1947).  
= *Euryscopa scapularis* Guérin, 1945; nec Lacordaire, 1848.  
*Euryscopa albopilosa* Monrós, 1953a.  
*Coleorozena albopilosa* Moldenke, 1981.
2. *Coscinoptera argentina* Burmeister, 1877 (COR, ERS, SEO).  
*Euroscopa* (*Coleoguerina*) *argentina*: Moldenke, 1981 (misspelled for *Euryscopa*).
3. *Coscinoptera atypica* Monrós, 1953a (MNS).  
*Euroscopa* (*Coleoguerina*) *atypica*: Moldenke, 1981 (misspelled for *Euryscopa*).
4. *Coscinoptera denieri* Monrós, 1953a (CHA, FOR).  
*Euroscopa* (*Coleoguerina*) *denieri*: Moldenke, 1981 (misspelled for *Euryscopa*).
5. *Coscinoptera dubia* Guérin, 1949 (COR, MZA, SEO).  
= *Coscinoptera argentina* Guérin, 1944, not Burmeister, 1877.  
*Euroscopa* (*Coleoguerina*) *dubia*: Moldenke, 1981 (misspelled for *Euryscopa*).
6. *Coscinoptera euryscopoides* Monrós, 1953a (SAL, SEO).
7. *Coscinoptera guerini* (Monrós, 1953a) (CHA, CTS, FOR, MNS).  
*Coleorozena guerini*: Moldenke, 1981.  
*Euryscopa guerini* Monrós, 1953a.
8. *Coscinoptera humeralis* Monrós, 1953a (CAT, CHA, COR, MZA, SAL) Host plant: Fabaceae: *Prosopis* sp. (Roig-Juñent, 2004).  
*Euroscopa* (*Coleoguerina*) *humeralis*: Moldenke, 1981 (misspelled for *Euryscopa*).
9. *Coscinoptera nigerrima* Guérin, 1945 (COR, SEO).

- Euroscopa (Coleoguerina) nigerrima*: Moldenke, 1981 (misspelled for *Euryscopa*).
10. *Coscinoptera obliqua* Lacordaire, 1848 (CTS).  
*obliqua* Lacordaire, 1848 (*incertae sedis* in Moldenke, 1981).
  10. *Coscinoptera terebellum* Lacordaire, 1848 (CTS, MNS).  
*Euryscopa terebellum*: Monrós, 1953a.
  11. *Coscinoptera tibialis* Harold, 1875 (CHA, COR, ERS, FOR, MZA, SAL TUC, SEO). Host plant: Fabaceae: *Acacia caven* (Mol.) Mol. (Monrós, 1953a).

### ***Euryscopa* Lacordaire, 1848**

*Euryscopa* Lacordaire, 1848: 493–494; Chapuis 1874: 140; Jacoby 1880: 31–32; Horn 1892: 15–16; Jacoby and Clavareau 1906: 64; Clavareau 1913: 78; Guérin 1943: 34–35; Monrós 1953a: 102–103; Moldenke 1970: 74, 1981: 93.

**Note.** Moldenke (1981) divided this genus into three subgenera, one of these, *E. (Coleoguerina)*, was synonymized by Agrain and Roig-Juñent (2011) with *Coscinoptera*. From the remaining two subgenera only one has representative species in Argentina, *E. (Coleomonrosa)*.

### ***Euryscopa (Coleomonrosa) Moldenke, 1981***

Fig. 18

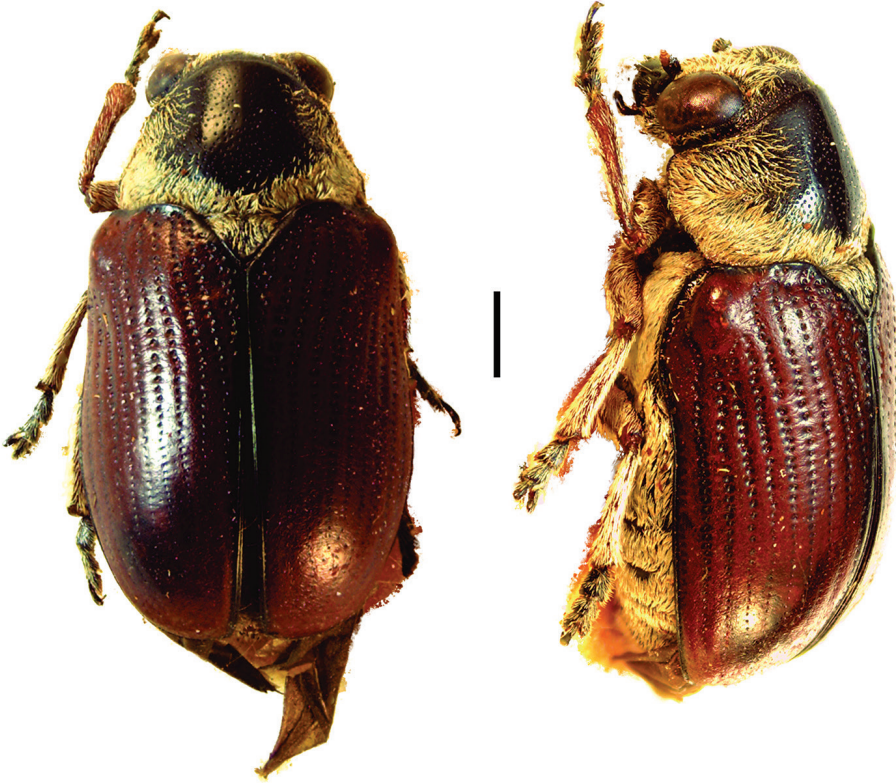
**Type species.** *Euryscopa semicincta* Lacordaire, 1848, designated by Moldenke 1981: 94.

**Diagnosis.** Size greater than 7mm; robust, widest at humeral angle; scutellum foveate; aedeagus occupying entire abdominal length, distinctly straight; body not metallic, eyes weakly emarginate; antennomere IV smaller than V; elytral punctation seriate or sub-seriate, without pubescence; pygidium with transverse subapical carina.

**Distribution.** Argentina, Brazil, Colombia, Costa Rica, French Guiana, Mexico, Peru, Suriname, and Venezuela.

#### **Argentinian species checklist.**

1. *Euryscopa (Coleomonrosa) haematoptera* Lacordaire, 1848 (MNS).  
*Euryscopa haematoptera* Lacordaire, 1848.  
*Euryscopa (Coleomonrosa) haematoptera*: Moldenke, 1981.
2. *Euryscopa (Coleomonrosa) scapularis* Lacordaire 1848 (COR, MNS). Host plant: Asteraceae:  
*Baccharis* sp. (Monrós 1947).  
*Euryscopa scapularis* (Moldenke 1981) Lacordaire, 1848.  
*Euryscopa (Coleomonrosa) scapularis*: Moldenke, 1981.



**Figure 18.** *Euryscopa (Coleomonrosa) haematoptera* Lacordaire <sup>(1)</sup>, left: habitus (dorsal view), right: habitus (lateral view).

### *Megalostomis* Chevrolat, 1836

Fig. 19

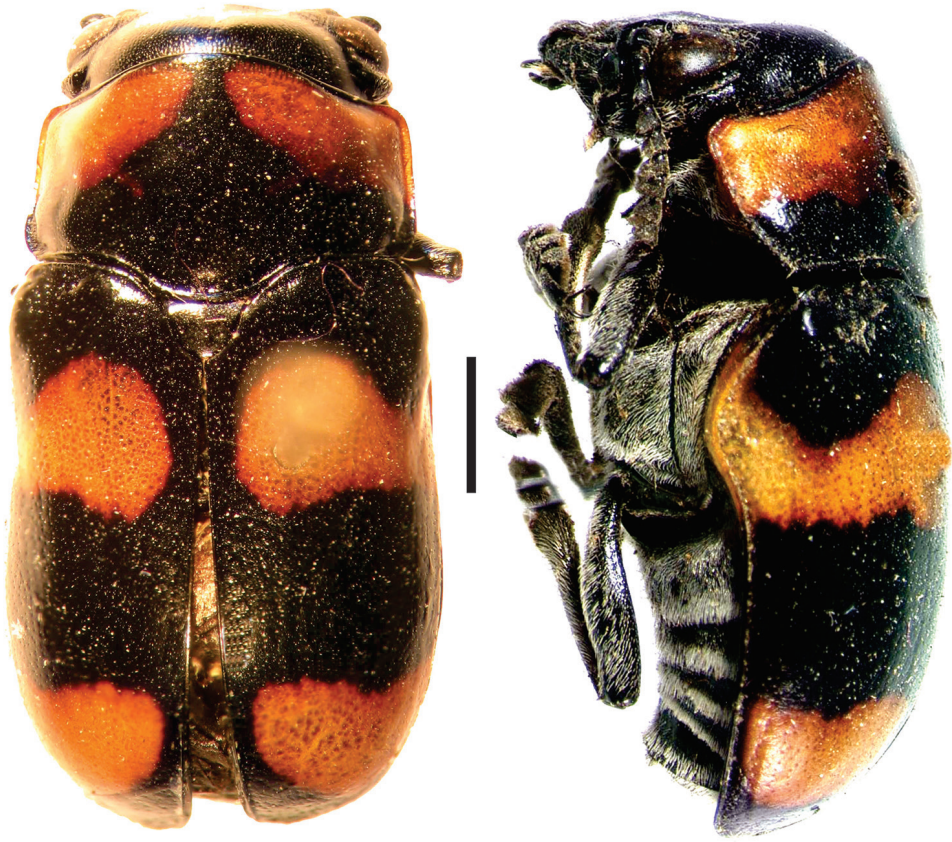
*Megalostomis* Chevrolat 1836: 416; Lacordaire 1848: 519; Blanchard 1851: 534; Chapuis 1874: 135; Gemminger and Harold 1874: 3294; Jacoby 1876: 809, 1880: 29; Horn 1892: 10; Jacoby and Clavareau 1906: 58; Clavareau 1913: 74; Bruch 1914: 348; Guérin 1943: 9; Monrós 1953a: 61, 1953b: 46; Moldenke 1970: 14, 1981: 99.

*Megalostomis (Megalostomis)* Chevrolat 1836: 416; Lacordaire 1848: 534; Chapuis 1874: 137; Jacoby and Clavareau 1906: 59; Guérin 1943: 15; Monrós 1953a: 71; Moldenke 1970: 19, 1981: 100.

=*Megalostomis (Minturnia)* Lacordaire 1848: 520; Chapuis 1874: 136; Jacoby and Clavareau 1906: 60; Guérin 1943: 11; Monrós 1953a: 62; Moldenke 1970: 19, 1981: 100; Agrain and Roig-Juñent 2011: 672, 695 (SYN).

=*Megalostomis (Heterostomis)* Lacordaire 1848: 554; Chapuis 1874: 138; Jacoby and Clavareau 1906: 60; Guérin 1943: 27; Monrós 1953a: 78; Agrain and Roig-Juñent 2011: 672, 695 (SYN).





**Figure 19.** *Megalostomis grossa* (Forsberg)<sup>(1)</sup>, left: habitus (dorsal view), right: habitus (lateral view).

=*Megalostomis* (*Scaphigenia*) Lacordaire 1848: 547; Chapuis 1874: 137; Jacoby and Clavareau 1906: 60; Clavareau 1913: 75; Achard 1926: 148; Guérin 1943: 24; Monrós 1953a: 88; Seeno and Wilcox 1982: 33; Agrain et al. 2007: 340; Agrain and Roig-Juñent 2011: 672, 695 (SYN).

=*Megalostomis* (*Pygidiocarina*) Moldenke 1970: 26, 1981: 83; Agrain and Roig-Juñent 2011: 672, 695 (SYN).

=*Megalostomis* (*Coleobyersa*) Moldenke 1981: 101; Agrain and Roig-Juñent 2011: 672, 695 (SYN).

=*Megalostomis* (*Snellingia*) Moldenke 1981: 101; Agrain and Roig-Juñent 2011: 672, 695 (SYN).

**Type species.** *Clythra boopis* (Germar, 1824) [= *Megalostomis grossa* (Forsberg 1821)], subsequent designation by Monrós 1953b: 46.

**Diagnosis.** Among the species of *Megalostomis*, several morphological differences exist and the head and thorax are highly variable, therefore, the most useful



morphological characters are: presence of a carina in the inter-ocular area, development of anterior teeth on the mandibles, clypeus sculpture, and the degree of retraction of the head inside the prothorax. The thorax may have strong constrictions, which are often present in those species showing great development of the head and mouthparts. The elytra are also variable; the most distinctive characters are the coloration pattern and the ordering of the elytral punctation. Although also variable, the abdomen and legs are not especially useful for the recognition of species groups. The pygidium may possess distinct sculpture patterns, which are useful to diagnose among species.

**Distribution.** *Megalostomis* distribution includes North, Central and South America, especially diverse in xeric temperate or subtropical zones.

**Remarks.** This genus was revised by Agrain (2013). *Megalostomis* now includes 43 species (Agrain 2014), 13 of them present in Argentina. According to Agrain and Roig-Juñent (2011) this genus is supported by two synapomorphies: eyes strongly emarginated and dorsal plate of aedeagus with straight margin. The morphology in the genus is highly variable, especially for sexual dimorphic features such as: a greater development of mandibles, the presence of constrictions on the pronotal disc, development of double infraocular projection and lengthening of forelegs (Agrain 2013).

#### Argentinian species checklist.

1. *Megalostomis analis* (Forsberg, 1821) (COR, CTS, FOR, MNS, SEO).
  - = *Clythra analis* Forsberg, 1821.
  - = *Clythra bicincta* Germar, 1824.
  - = *Megalostomis bicincta* Germar 1824.
  - Megalostomis* (*Heterostomis*) *analis*: Lacordaire, 1848.
  - = *Megalostomis* (*Heterostomis*) *analis* var. *seminigra* Achard, 1926.
  - = *Megalostomis* (*Heterostomis*) *analis* var. *lateralis* Achard, 1926.
2. *Megalostomis consimilis* Achard, 1926 (CAT, CHA, COR, CTS, FOR, JUY, LRA, MZA, SAL, SEO, SLS, TUC). Host plants: Fabaceae: *Prosopis Algarrobilla* (Roig-Juñent 2004), *Prosopis affinis* (Roig-Juñent 2004), *Prosopis* sp. (Viana and Williner 1974).
  - Megalostomis* (*Scaphigenia*) *consimilis*: Agrain et al., 2007.
  - = *Megalostomis* (*Scaphigenia*) *cornuta* Monrós, 1945 (nec Lacordaire, 1848).
  - Megalostomis* (*Scaphigenia*) *cornuta consimilis*: Monrós 1956a.
3. *Megalostomis cornuta* Lacordaire, 1848 (COR, SAL, SEO).
  - = *Megalostomis cornuta* Dejean, 1836 (*nomen nudum*).
  - Megalostomis* (*Scaphigenia*) *cornuta* Lacordaire, 1848.
  - = *Megalostomis* (*Scaphigenia*) *cornuta* var. *baeri* Achard, 1926.
  - = *Megalostomis* (*Scaphigenia*) *cornuta* var. *obliterate* Achard 1926.
  - = *Megalostomis* (*Scaphigenia*) *cornuta* var. *divisa* Guérin, 1949.
4. *Megalostomis gazella* Lacordaire, 1848 (CAT, CHA, COR, CTS, ERS, FOR, JUY, LPA, LRA, MNS, MZA, SAL, SEO, SFE, SJN, SLS, TUC). Host plants: Fabaceae: *Prosopis* sp.; *Acacia* sp. (Monrós 1953a); *Prosopis caldenia* (Aravena

- 1974), *Prosopis flexuosa* (Roig-Juñent 2004). Ant hosts: Colonies of *Camponotus* sp. (Monrós 1953a, as Dr. Oblobin pers. comm.)
- Megalostomis* (*Scaphigenia*) *gazella* Lacordaire, 1848.  
 = *Megalostomis* (*Scaphigenia*) *gazella* var. *clavapex* Achard, 1926.  
 = *Megalostomis* (*Scaphigenia*) *gazella* var. *flavapex*: Monrós, 1953a (misspelling pro *clavapex*).  
 = *Megalostomis* (*Scaphigenia*) *gazella* var. *nigrapex* Achard, 1926.  
 = *Megalostomis* (*Scaphigenia*) *gazella* var. *nigrescens* Achard, 1926.  
 = *Megalostomis meretrix* Lacordaire, 1848.  
 = *Megalostomis bicingulata* Lacordaire, 1848.
5. *Megalostomis grossa* (Forsberg, 1821) (COR, CTS, FOR, JUY, MNS) .  
 = *Clythra grossa* Forsberg, 1821.  
 = *Clythra boopis* Germar, 1824.  
 = *Megalostomis boopis*: Dejean, 1836.  
 = *Megalostomis interrupta* Dejean, 1836 (*nomen nudum*).  
*Megalostomis* (*Megalostomis*) *grossa* Lacordaire, 1848.  
 = *Megalostomis* (*Megalostomis*) *grossa brasiliiana* Achard, 1926.  
 = *Megalostomis* (*Megalostomis*) *grossa cinctipennis* Achard, 1926.  
 = *Megalostomis grossa* var. *boopis* Achard, 1926.  
 = *Megalostomis grossa* var. *quadrimaculata* Achard, 1926.
6. *Megalostomis kollari* Lacordaire, 1848 (COR, MNS).  
*Megalostomis* (*Scaphigenia*) *kollari* Lacordaire, 1848.
7. *Megalostomis lacordairei* Lacordaire, 1848 (CAT, CHA, CTS, FOR, LRA, MNS, MZA, SAL, SEO, SFE, SJN, SLS, TUC). Host plants: Fabaceae (Monrós 1953a) *Cercidium praecox* (Brea); *Prosopis* sp.; *Geoffroea decorticans* (Chañar) (Viana and Williner 1974); *Acacia caven* (Mol.) Mol. (Viana and Williner 1974); *Senna aphylla* (Agrain and Marvaldi 2009); *Prosopis* sp. and Verbenaceae (Cordo and DeLoach 1995): *Aloysia gratissima*. Zygophyllaceae: *Bulnesia retama* (Common name in Argentina: Retamo, in Peru: Calato).  
 = *Megalostomis lacordairei* Dejean, 1836 (*nomen nudum*).  
*Megalostomis* (*Heterostomis*) *lacordairei* Lacordaire, 1848.  
 = *Megalostomis* (*Heterostomis*) *histrionica* Harold, 1875.  
 = *Megalostomis* (*Heterostomis*) *lacordairei* var. *seminigra* Achard, 1926.  
 = *Megalostomis lacordairei* var. *basalis* Achard, 1926.  
 = *Megalostomis lacordairei* var. *collaris* Achard, 1926.  
 = *Megalostomis lacordairei* var. *conjuncta* Achard, 1926.  
 = *Megalostomis lacordairei* var. *consimilis* Achard, 1926.  
 = *Megalostomis lacordairei* var. *histrionica* Achard, 1926.  
 = *Megalostomis lacordairei* var. *interrupta* Achard, 1926.  
 = *Megalostomis lacordairei* var. *reducta* Achard, 1926.
8. *Megalostomis querula* Lacordaire, 1848 (CTS, ERS) Host plants: Salicaceae: *Caesaria sylvestris* (Guacatonga or wild coffee) (Agrain 2013).

- Megalostomis (Minturnia) querula* Lacordaire, 1848.  
 = *Megalostomis (Minturnia) propinqua* Lacordaire, 1848.  
 = *Megalostomis (Minturnia) univittata pacifica* Monrós, 1953a.
9. *Megalostomis religiosa* Lacordaire, 1848 (CTS, MNS).  
 = *Megalostomis religiosa* Dejean, 1836 (*nomen nudum*).  
*Megalostomis (Scaphigenia) religiosa* Lacordaire, 1848.  
 = *Megalostomis distincta* Lacordaire, 1848.
10. *Megalostomis robustipes* Monrós, 1953a (MNS).  
 = *Megalostomis (Minturnia) robustipes* Monrós, 1953a.
11. *Megalostomis tricincta* (Germar, 1824) (CTS, MNS).  
 = *Clythra tricincta* Germar, 1824.  
*Megalostomis (Megalostomis) tricincta*: Lacordaire, 1848.  
 = *Megalostomis (Scaphigenia) bubalus* Lacordaire, 1848.  
 = *Megalostomis (Scaphigenia) religiosa* Monrós, 1945 (nec Lacordaire, 1848).  
 = *Megalostomis (Scaphigenia) bubalus bubaloides* Monrós, 1953a.
12. *Megalostomis univittata* Lacordaire, 1848 (MNS, SAL).  
 = *Megalostomis (Minturnia) univittata univittata* Lacordaire, 1848.  
 = *Megalostomis (Minturnia) univittata oblita* Monrós, 1953a.
13. *Megalostomis vianai* Monrós, 1947 (MNS).  
*Megalostomis (Minturnia) vianai* Monrós, 1947.

### ***Themesia* Lacordaire, 1848**

Fig. 20

*Themesia* Lacordaire 1848: 517-518; Chapuis 1874: 138; Jacoby and Clavareau 1906: 62; Clavareau 1913: 77; Guérin 1943: 30; Monrós 1953a: 130; Moldenke 1970: 12.

**Type species.** *Themesia auricapilla* (Germar, 1824), designated by Monrós 1953a: 130.

**Diagnosis.** This genus is close to *Coscinoptera*, from which it can be separated by its unicolored metallic green/blue coloration (except in *T. costaricensis* and *T. lacordairei*, not present in Argentina) and by its distinct body shape. Eyes large, non-emarginate and distinctly protruding; elytra glabrous without distinct punctuation pattern, epipleurae reduced; pygidium flat; antennomere IV much smaller than V, not clavate; ventrites densely pubescent.

**Distribution.** From Costa Rica to Colombia, and in Brazil, Paraguay, and Argentina.

#### **Argentinian species checklist.**

1. *Themesia auricapilla grandis* Baly, 1877a (CTS, MNS, TUC).  
*Themesia grandis* Baly, 1877a.



**Figure 20.** *Themesia auricapilla grandis* Baly <sup>(1)</sup>, left: habitus (dorsal view), right: habitus (lateral view).

### Tribe Cryptocephalini Gyllenhal, 1813

The most common characters to differentiate this tribe are the procoxae globose, distinctly separated by intercoxal prosternal process. In males of many species of *Cryptocephalus* (Cryptocephalina) and *Griburinus* (Pachybrachina) the dorsal lobes of the eyes are strongly converging towards the median line and may come into contact with each other. Phylogenetic significance (if any) of this trait is unclear. The antennae are long and filiform in most genera, often reaching the humeral callus or further, although there are exceptions (eg. clavate in Fulcidacini).

### Subtribe Cryptocephalina Gyllenhal, 1813

The most distinctive character is the crenulate, not margined, base of pronotum. Some characters present variation, such as the tarsal claws which may be simple or appendiculate, or antennae, which may be short and clavate to subserrate.

***Cryptocephalus* Geoffroy, 1762**

Fig. 21

*Cryptocephalus* Geoffroy, 1762: 231 (conserved name); Chevrolat 1836: 422; Saunders 1845: 142; Redtenbacher 1845: 118; Gistel 1848: 123; Haldeman 1849: 170; Stål 1857: 61; Chapuis 1874: 184; Jacoby 1880: 42; Baly 1877b: 32; Burmeister 1877: 64; Burlini 1953: 75; Lopatin 1965: 452; White 1968: 24; Blackwelder 1946: 644.

*Cryptocephalus* Müller, 1764 (subsequent use).

- = *Physicerus* Chevrolat, 1836.
- = *Strigogophorus* Chevrolat, 1836 (nomen nudum).
- = *Dicenopsis* Saunders, 1842.
- = *Mitocera* Saunders, 1842.
- = *Ochrosopsis* Saunders, 1843.
- = *Anodonta* Saunders, 1845, not Lamarck 1799 (Mollusca).
- = *Idiocephala* Saunders, 1845.
- = *Ochrosopsus*: Saunders, 1845 (error).
- = *Canthostethus* Haldeman, 1849.
- = *Mecostethus* Stål, 1857.
- = *Euphyma* Baly, 1877c.

**Type species.** *Chrysomela sericea*, designated by Latreille 1810: 432.

**Diagnosis.** Anteriorly flat head, deeply inserted into the prothorax; eyes reniform; leading edge of prothorax laterally straight; denticles present on posterior margin of pronotum; thorax closely fitted to base of elytra (thus sometimes concealing denticles); anterior margin of intercoxal prosternal process uniformly concave or with medial flange; intercoxal width equal to or greater than width of coxal cavity; ventrite I of male without spines. Rectal apparatus bearing one ventral and two dorsal sclerites.

**Distribution.** Worldwide, with over 1700 species (Chamorro 2014b), with nine species cited for Argentina.

**Remarks.** Although a complex subgeneric classification does exist for Palearctic species (Schöller 2002), new world species including Argentinian, have not yet been assigned to subgenera.

**Argentinian species checklist.**

1. *Cryptocephalus acuminatus* Jacoby, 1907 (TUC).
2. *Cryptocephalus argentinus* Jacoby, 1907 (BAS).
3. *Cryptocephalus carbonarius* Burmeister, 1877 (BAS).
4. *Cryptocephalus fuscus* Suffrian, 1863 (BAS).
5. *Cryptocephalus incommodus* Suffrian, 1863 (BAS).
6. *Cryptocephalus misellus* Suffrian, 1857 (BAS, CTS).
7. *Cryptocephalus tucumanensis* Jacoby, 1907 (TUC).
8. *Cryptocephalus subaenescens* Jacoby, 1907 (TUC).





**Figure 21.** *Cryptocephalus carbonarius* Burmeister <sup>(2)</sup>, left: habitus (dorsal view), right: habitus (lateral view).

### Subtribe Monachulina Leng, 1920

The members of this subtribe have the intercoxal prosternal process noticeably wider than long; tarsal claws appendiculate; antennae are usually short (rarely longer than base of pronotum) and antennomeres expanded laterally.

#### *Lexiphanes* Gistel, 1848

Fig. 22

*Lexiphanes* Gistel, 1848: 123; Balsbaugh 1966: 660.

= *Monachus* Chevrolat 1836 (not Kaup 1829, not Flemming 1822).

= *Monachulus* Leng 1918.

**Type species.** *Cryptocephalus saponatus* Fabricius [= *Lexiphanes saponatus* (Fabricius)], designated by Balsbaugh (1966: 660).

**Diagnosis.** *Lexiphanes* may be most commonly confused with *Stegnocephala* and less so with *Cryptocephalus*. Both genera in Monachulina have shorter antennae (rarely surpassing half of entire body length) with antennomeres anteriorly expanded (less so in



**Figure 22.** *Lexiphanes consimilis* (Suffrian)<sup>(2)</sup>, left: habitus (dorsal view), right: habitus (lateral view).

*Lexiphanes*). Also, the intercoxal prosternal process is wide and bilobed with small lateral projections and the anterior margin of intercoxal prosternal process uniformly concave (Chamorro-Lacayo and Konstantinov 2004). *Lexiphanes* can be distinguished from *Stegnocephala* by the more uniform rounded shape of the pronotum, which lacks basolateral depressions. The prothoracic anterior opening in *Lexiphanes* has a circumference, best viewed anteriorly, with the dorsal and ventral margins on the similar vertical plane (in lateral view). In general, *Stegnocephala* is larger, more robust, and colorful than *Lexiphanes*.

**Distribution.** This genus is restricted to the New World, from México to Argentina with over 100 species. 11 of which are present in Argentina.

**Remarks.** Balsbaugh (1966) revised the North American species of this genus. The limits of the subtribe, genera, and species need revision. Information is lacking for Central and South American species that are known only from their original descriptions in the 19<sup>th</sup> century. The presence of denticles on the posterior margin of pronotum is shared with Cryptocephalina, therefore Monachulina may not be a natural group, and may be a synonym of Cryptocephalina. This hypothesis remains to be tested.

#### **Argentinian species checklist.**

1. *Lexiphanes anthracinus* (Burmeister, 1877) (Patagonia, RNO).
2. *Lexiphanes biplagiatus* (Boheman, 1858) (BAS, CTS).
3. *Lexiphanes coenobita* (Suffrian, 1863) (TUC).
4. *Lexiphanes consimilis* (Suffrian, 1863) (BAS).
5. *Lexiphanes ebeninus* (Burmeister, 1877) (SCZ).



**Figure 23.** *Stegnocephala xanthopyga* (Suffrian) <sup>(2)</sup>, left: habitus (dorsal view), right: habitus (lateral view).

6. *Lexiphanes flavifrons* (Burmeister, 1877) (Patagonia, SCZ).
7. *Lexiphanes granarius* (Suffrian, 1863) (Argentina).
8. *Lexiphanes modestus* (Boheman, 1858) (Argentina).
9. *Lexiphanes nigrifulus* (Boheman, 1858) (BAS).
10. *Lexiphanes ornatipennis* (Jacoby, 1908) (TUC).
11. *Lexiphanes saucius* (Burmeister, 1877) (BAS).

### *Stegnocephala* Baly, 1877

Fig. 23

*Stegnocephala* Baly 1877b: 32; Jacoby 1889: 122; Clavareau 1913: 113; Bruch 1914: 352.

**Type species.** *Cryptocephalus hemixanthus* Suffrian, by original designation.

**Diagnosis.** Coxa widely separated, epipleural lobes strongly produced. Chamorro-Lacayo and Konstantinov (2004), provided several prothoracic characters: pronotal punctures absent; intercoxal prosternal process truncate; anterior margin of intercoxal prosternal process with a medial flange, or two submedial flanges.

**Distribution.** From Costa Rica to Argentina, mainly in tropical regions.



**Remarks.** Weise (1921) disagreed with the separation of this genus from *Cryptocephalus*. White (1968), interpreted Weise's comment as the synonymization of *Stegnocephala* with *Cryptocephalus*. Since Weise (1921) only provided morphological differences of *Cryptocephalus perplexus* Suffrian, which is not the type species of the genus, we still consider *Stegnocephala* as a valid genus. Chamorro is currently revising the genus.

**Argentinian species checklist.**

*Stegnocephala discoidalis* Baly, 1877c (MNS).

*Stegnocephala xanthopyga* (Suffrian, 1863) (TUC). This species newly cited for Argentina (Tucuman, Famaillá: Quebrada de Lules, 30-I-1942 // F. Monrós Collection 1959).

**Subtribe Pachybrachina Chapuis, 1874**

The following characters (when combined) can help with the identification of its members (Chamorro 2013): Presence of tibial spurs (absent in *Mylassa*, *Ambrotodes*, and *Griburius s. str.*); lack of denticles on the posterior margin of the pronotum (i.e. not crenulate); base of pronotum margined and bilobed sinuate (except in *Mylassa* and less or differently margined in *Ambrotodes*); coarsely punctate dorsally and ventrally including hypomeron (except *Sternoglossus*, and *Mylassa*); confused elytral punctures (except *Mylassa*; less orderly in *Griburius*, *Metallactus*); intercoxal prosternal process lobed (bilobed in other groups) and posterior margin produced caudad (less so in *Pachybrachis*; eyes visible from above (not visible from above in *Mylassa* and *Ambrotodes*; bulging, particularly in *Ambrotodes*, and *Mylassa*, in all other genera the dorsal section of the eye is generally larger than the ventral part as separated by the well developed canthus (canthus weak in *Ambrotodes*, and *Mylassa*). This subtribe is currently being revised by Davide Sassi.

***Griburius* Haldeman, 1849**

Fig. 24

*Griburius* Haldeman, 1849: 245.

= *Scolochrus* Suffrian, 1852.

**Type species.** *Griburius scutellaris* Haldeman 1849: 245 (= *Cryptocephalus scutellaris* Fabricius, 1801), by monotypy.

**Diagnosis.** Recently, Chamorro (2013) provided the following characters to identify the species of this genus: posterior margin of intercoxal prosternal process rounded; lateral margin of elytra deeply excised exposing abdomen caudally, elytra length approximately 2× or less length of pronotum. However, the limits of *Griburius* and *Metallactus* are confused and require revision.



**Figure 24.** *Griburius cultus* (Suffrian)<sup>(4)</sup>, left: habitus (dorsal view), right: habitus (lateral view).

**Distribution.** Nearctic and Neotropical.

**Argentinian species checklist.**

*Griburius bilineolatus* (Suffrian, 1866) (BAS, COR).

*Griburius conspurcatus* (Suffrian, 1866) (BAS).

*Griburius cultus* (Suffrian, 1866) (BAS).

*Griburius fastidiosus* (Suffrian, 1866) (BAS).

*Griburius octoguttatus* Burmeister, 1877 (ERS).

*Griburius persimilis* Burmeister, 1877 (BAS).





**Figure 25.** *Metallactus argentinensis* Jacoby<sup>(4)</sup>, left: habitus (dorsal view), right: habitus (lateral view).

***Metallactus* Suffrian, 1866**

Fig. 25

*Metallactus* Suffrian 1866: 248; Jacoby 1907: 848.

**Type species.** Not yet designated.

**Diagnosis.** *Metallactus* includes species that lack a deeply excised lateral edge of the elytra, additionally, the following characters may be useful to segregate species

into this genus: posterior margin of intercoxal prosternal process gradually narrowing, pointed; abdomen not exposed; elytral length greater than 2× length of pronotum (Chamorro 2013).

**Distribution.** Neotropical.

**Remarks.** This genus has not been revised since its original description by Suffrian (1866) and its relationship with related genera is presently unclear (Schöller 2003, Sassi 2015). Furthermore, Jacoby (1907) indicated *Metallactus* and *Griburius* to be very problematic to define, and a lot of species can not fit well in either genera. However, a study with a new diagnosis of the genus *Metallactus*, based on a new set of effective morphological characters is in progress (Sassi, *in prep.*).

**Argentinian species checklist.**

1. *Metallactus albipes* Suffrian, 1866 (CTS).
2. *Metallactus albopictus* Suffrian, 1866 (BAS, COR).
3. *Metallactus argentinensis* Jacoby, 1907 (COR).
4. *Metallactus bivitticollis* (Jacoby, 1907), **comb. n.** (BAS).
5. *Metallactus divisus* Jacoby, 1907 (SFE).
6. *Metallactus generosus* Suffrian, 1866 (CTS).
7. *Metallactus inustus* Suffrian, 1866 (BAS, CTS).
8. *Metallactus luniger* Suffrian, 1866 (Argentina).
9. *Metallactus nigrofasciatus* Suffrian, 1866 (COR, SLS). Host plant: Asteraceae: carqueja (*Baccharis* sp.) (Viana and Williner 1973).
10. *Metallactus nigrovittis* Jacoby, 1907 (SFE).
11. *Metallactus patagonicus* Suffrian, 1866 (BAS, COR, MZA, RNO).
12. *Metallactus pollens* Suffrian, 1866 (CTS).

***Mylassa* Stål, 1857**

Fig. 26

*Mylassa*: Stål 1857: 60; Baly 1877b: 32; Jakobson 1924: 258 (placed in *Pachybrachina*); Monrós 1949a: 492 (placed in *Cryptocephalina*); Schöller and Heinig 2003: 9, = *Cryptocephalus*; Suffrian 1863: 174; Blackwelder 1946: 644; Jerez and Briones 2010: 32.

**Type species.** *Mylassa fasciatipennis* Stål (= *Pachybrachis crassicollis* Blanchard), designated by Jakobson 1924: 258.

**Diagnosis.** This genus can be easily distinguished from all others in the area by the presence of pubescence on its body and by the presence of a basal thoracic lobe with raised, thickened apex. Furthermore, it has nearly entire eyes and the rectal apparatus bears two ventral and three dorsal sclerites, with the shape of the dorsal central plate band-like (very narrow) (Reid 1990; Schöller 2008).

**Distribution.** This genus has eight species described from Southern Chile and Argentina, and some new species awaiting description. Species are found between 30°S and 42°S and are associated with sclerophyllous shrubs (Jerez and Briones 2010).



**Figure 26.** *Mylassa pectinicornis* (Suffrian)<sup>(4)</sup>, left: habitus (dorsal view), right: habitus (lateral view).

**Remarks.** This genus was considered a synonym of *Cryptocephalus* by several authors, however several studies support its validity and it is hypothesized to be included in Pachybrachina (Baly 1877b; Jakobson 1924; Monrós 1949a, Schöller 2008; Jerez and Briones 2010) or in its own subtribe (Reid 1990; Chamorro and Konstantinov, unpublished data).

**Argentinian species checklist.**

1. *Mylassa chachallaoi* Monrós, 1949a (CHU, RNO). Host plant: Proteaceae: *Lomatia obliqua* (Monrós 1949a).

2. *Mylassa crassicollis* (Blanchard, 1851) (NQN, RNO). Host plant: Anacardiaceae: "litrenillo", *Schinus?* (Bosq 1943), *Schinus* sp. (Monrós 1949a); Betulaceae: *Betula* sp., Elaeocarpaceae: *Aristotelia* sp., and *Aristotelia maqui*, *Aristotelia chilensis* (as main food source) (Monrós 1949a), Ericaceae: *Gaultheria* sp. (Monrós 1949a), *Pernettya* sp. (Bosq 1943), Salicaceae: *Populus* sp. (Monrós 1949a).  
= *Mylassa fasciatipennis* Stål, 1857.
3. *Mylassa discariana* Monrós, 1949a (RNO). Host plant: Rhamnaceae: *Discaria* sp. (Monrós 1949a).
4. *Mylassa frigens* Monrós, 1949a (NQN).
5. *Mylassa obliquata* (Suffrian, 1863) (NQN, RNO).
6. *Mylassa pectinicornis* (Suffrian, 1866) (NQN, RNO, CHU). Host plant: Proteaceae: *Lomatia obliqua* (Monrós 1949a).

### ***Pachybrachis* Chevrolat, 1836**

Fig. 27

*Pachybrachis*: Chevrolat, 1836: 420.

= *Pachybrachis* Redtenbacher, 1845.

= *Pachystylus* Rey, 1883.

*Pachybrachys*: Mannerheim 1843: 311. Incorrect subsequent spelling.

**Type species.** *Cryptocephalus hieroglyphicus* Laicharting, 1781. By subsequent designation of Jacoby 1908: 265.

**Diagnosis.** Posterior margin of intercoxal prosternal process relatively entire, rarely produced beyond posterior margin of prothorax; gestalt cylindrical (height of each elytron approximately 2.5 width), pronotum narrower than elytral bases combined, overall flattened not vaulted; punctuation on head, prothorax and elytra evident, large; elytral punctuation commonly confused (but punctuation in rows not uncommon); fore-femora may or may not be enlarged; mesotibiae usually with terminal spur in both sexes.

**Distribution.** Nearctic, Neotropical, Palearctic, and Oriental regions.

**Remarks.** A subgeneric classification exists for Palearctic species, Neotropical species have not yet been assigned to subgenera.

#### **Argentinian species checklist.**

1. *Pachybrachis foetidus* Suffrian, 1866 (BAS)
2. *Pachybrachis gayi* Blanchard, 1851 (ARGENTINA). Host plant: Fagaceae: *Nothofagus* and *Castanea* (Jolivet, 1978).
3. *Pachybrachis mysticus* Suffrian 1866 (BAS, LPA). Host plant: Fabaceae: *Prosopis caldenia* (Aravena 1974).
4. *Pachybrachis nigronotatus* Boheman, 1858 (BAS)
5. *Pachybrachis xanthogrammus* Suffrian, 1866 (CTS, ERS).





**Figure 27.** *Pachybrachis mysticus* Suffrian <sup>(2)</sup>, left: habitus (dorsal view), right: habitus (lateral view).

### Tribe Fulcidacini Jakobson, 1924

= Chlamisini Gressitt, 1946

This tribe is the least diverse within Cryptocephalinae, and it is much more diverse in the Neotropics (Chamorro 2014b). Most adults resemble caterpillar droppings. Chamorro-Lacayo and Konstantinov (2009), undertook a comprehensive synoptic study of the world genera of Fulcidacini.

### *Aulacochlamys* Monrós, 1951c

Fig. 28

*Aulacochlamys* Monrós, 1951c: 657; Chamorro-Lacayo and Konstantinov 2009: 66.

**Type species.** *Exema costicollis* Lacordaire, 1848, by original designation.

**Diagnosis.** The most salient feature of this genus is the presence medially on the pronotum of six elevated distinct, small, sharp, longitudinal carinae, which converge medially near the posterior margin, reminiscent of a fan. These are small beetles (less than 3 mm length), cylindrical; with antennae serrated beyond antennomere V. antennomeres III–V slightly widened, but not dilated distally; pronotal base opposite



**Figure 28.** *Aulacochlamys costicollis* (Lacordaire)<sup>(2)</sup>, left: habitus (dorsal view), right: habitus (lateral view).

mesoscutellum (posterior pronotal lobe) with or without notch; intercoxal prosternal process gradually narrowing posteriorly, broadening before apex; metascutellum concealed by elytra; elytral suture completely serrate, although serration may be weak near scutellum, elytral tubercles well developed. Tibiae slightly curved, cylindrical. *Aulacochlamys* can easily be distinguished from *Chlamisus* Rafinesque by the presence of the six longitudinal carinae on its pronotum.

**Distribution.** Pantropical, except Australia (Monrós 1951c). Six of the 21 Neotropical species are present in Argentina.

**Argentinian species checklist.**

1. *Aulacochlamys costicollis* (Lacordaire, 1848) (CTS, JUY, MNS).
2. *Aulacochlamys minuta* Monrós, 1951c (MNS).
3. *Aulacochlamys pygidialis* Monrós, 1951c (MNS).
4. *Aulacochlamys radiata* Monrós, 1951c (MNS).
5. *Aulacochlamys rectecarinata* Monrós, 1951c (CTS, MNS, TUC).
6. *Aulacochlamys ultima* Monrós, 1951c (COR).

***Chlamisus* Rafinesque, 1815**

Fig. 29

*Chlamisus* Rafinesque, 1815: 116; Chamorro-Lacayo and Konstantinov 2009: 71.= *Chlamys* Knoch, 1801: 122.= *Myochlamys* Ihering, 1907.= *Arthrochlamys* Ihering, 1904.= *Boloschesis* Jakobson, 1924.**Type species.** *Chlamys foveolata* Knoch, 1801, by subsequent designation of Navajas 1946: 244 [preoccupied by *Chlamys* Röding, 1798, Mollusca].**Diagnosis.** This genus can be separated from *Exema* Lacordaire by the following characters: males without spines or spinulae on ventrite I; antennomere V nearly as large as VI; sutural serration of elytra usually incomplete (suture entire immediately following mesoscutellum); intercoxal prosternal process posteriorly pointed (narrowed), posteriorly much narrower than anterior margin (Chamorro-Lacayo and Konstantinov 2009). Intermediate size (3–8 mm length). Body usually not metallic in color; elytra without velvety spots. Antenna serrate beyond antennomeres III or IV, antennomere II slightly widened, globose, antennomere V nearly as large as 6<sup>th</sup>. Pronotum medially elevated, with various bumps and short carinae; posterior pronotal lobe with well-differentiated notch; metascutellum not exposed.**Distribution.** Cosmopolitan, with over 400 species described worldwide (Monrós 1951c; Reid 1991).**Argentinian species checklist.**

1. *Chlamisus achalay* Monrós, 1951c (LRA, SAL).
2. *Chlamisus aeronauticus* Monrós, 1951c (JUY, SAL, TUC).
3. *Chlamisus apricarius* (Lacordaire, 1845) (CHT, NQN, RNO).  
= *Chlamys fulvescens* Blanchard, 1851.  
= *Chlamys minuta* Philippi & Philippi, 1864.  
= *Chlamys picta* Philippi & Philippi, 1864.
4. *Chlamisus clarapex* Monrós, 1951c (MNS).
5. *Chlamisus coya* Monrós, 1951c (JUY).
6. *Chlamisus discalceatus* Monrós, 1951c (CHA).
7. *Chlamisus discipennis* (Jacoby, 1901) (MNS). Host plant: Sterculiaceae: *Waltheria americana* (Bokermann 1963).
8. *Chlamisus echinatus* (Klug, 1824) (SAL) Host plant: Euphorbiaceae: *Croton pohlianus* (Bokermann 1963).
9. *Chlamisus gibbicollis* (Lacordaire, 1848) (BAS, CHA, COR, ERS, FOR, JUY, MNS, SAL, TUC)  
= *Chlamys lebasii* Lacordaire, 1848. Host plant: Sterculiaceae: *Waltheria americana* (Bokermann 1963).
10. *Chlamisus guarani* Monrós, 1951c (CTS).



**Figure 29.** *Chlamisus apicarius* (Lacordaire)<sup>(3)</sup>, left: habitus (dorsal view), right: habitus (lateral view).

11. *Chlamisus hirtus* (Kollar, 1824) (CTS, MNS). Host plants: Fabaceae, Sapindaceae, Malvaceae, Sterculiaceae, Euphorbiaceae, (Monrós 1951c).
- 12a. *Chlamisus hispidulus hispidulus* (Klug, 1824) (BAS, CHA, COR, FOR, JUY, LRA, MNS, SAL, SEO, SFE, SLS, TUC).  
= *Chlamys cordovens* Jacoby, 1901. Host plants: Fabaceae: *Acacia* sp., *Acacia cavenia*; Asclepiadaceae: “Tasi” (Monrós 1951c).
- 12b. *Chlamisus hispidulus llajtamaucanus* Monrós, 1951c (COR, LRA, MZA, SEO).
13. *Chlamisus impressus* (Fabricius, 1801) (MNS).
14. *Chlamisus inopinatus* Monrós, 1951c (CTS).
15. *Chlamisus integrithorax* Monrós, 1951c (MNS).
16. *Chlamisus kammerlacheri* (Kollar, 1824) (MNS).
17. *Chlamisus kurkuncho* Monrós, 1951c (JUY, SAL).
18. *Chlamisus langsdorffi* (Kollar, 1824) (MNS).  
= *Chlamys rugosa* Klug, 1824. Host plant: Fabaceae: *Bauhinia rufa* (Bokermann, 1963).
19. *Chlamisus longicornis* Monrós, 1951c (MNS).
20. *Chlamisus melochiae* Monrós, 1951c (COR, ERS, SAL, TUC). Host plant: Malvaceae: *Sphaeralcea* sp., Sterculiaceae: *Melochia* sp. (Monrós, 1951c), *Waltheria americana* (Bokermann 1963).



21. *Chlamisus mimicus* Monrós, 1950 (BAS, COR, CTS). Host plant: Melastomaceae: *Tibouchina* sp. (Bokermann 1963).
22. *Chlamisus olivaceus* (Kollar, 1824) (FOR).  
= *Chlamys bicolor* Klug, 1824.
23. *Chlamisus pilaga* Monrós, 1951c (FOR). Host plant: Sapindaceae: *Serjaria* sp. (Monrós 1951c).
24. *Chlamisus perforatus* Monrós, 1951c (MNS).
25. *Chlamisus pilicollis* Monrós, 1951c (MNS).
26. *Chlamisus proseni* Monrós, 1951c (JUY).
- 27a. *Chlamisus puncticollis* (Germar, 1824) (JUY).  
= *Chlamys muhlfeldii* Kollar, 1824. Host plant: Sapindaceae: *Serjaria* sp. (Monrós, 1951c).
- 27b. *Chlamisus puncticollis indigaceus* (Lacordaire, 1848) (COR, MNS).
28. *Chlamisus scortillus* (Lacordaire, 1848) (CTS).  
= *Chlamys scortillum* Lacordaire 1848. Host plant: Malpighiaceae: *Banisteria laevigata*, *Banisteria campestris* and *Banisteria crotonifolia* (Bokermann 1963).
29. *Chlamisus scrobicollis* (Lacordaire, 1848) (MNS, SAL).
30. *Chlamisus sidae* Monrós, 1951c (CHA, COR, CTS, FOR, JUY, MNS, SAL, TUC). Host plant: Malvaceae: *Sida rhombifolia* (Monrós, 1951c).
31. *Chlamisus sordidulus* Monrós, 1951c (CHA, CTS, FOR, JUY, MNS, SAL, SFE, TUC).
32. *Chlamisus sulcatus* (Kollar, 1824) (MNS).  
= *Chlamys cinnamomea* Klug, 1824. Host plant: Malpighiaceae: *Heteropteris seringifolia* (Bokermann 1963).
33. *Chlamisus tucumanus* Monrós, 1951c (JUY, SAL, TUC). Host plant: Euphorbiaceae: *Croton* sp. (Monrós 1951c).
34. *Chlamisus vianai* Monrós, 1951c (MNS).

### **Exema Lacordaire, 1848**

Fig. 30

*Exema* Lacordaire, 1848: 844; Jacoby 1908: 278; Karren 1966: 647; Chamorro-Lacayo and Konstantinov 2009: 74.

**Type species.** *Chlamys intricata* Kollar, 1824, by subsequent designation.

**Diagnosis.** Small species (2–3.5 mm length), cylindrical with widest near shoulders; antenna serrate beyond antennomere V, antennomeres III–IV slightly widened, but not dilated distally; pronotum with various bumps and short ridges, posterior pronotal lobe concave, usually without well differentiated notch.

**Distribution.** Present in Nearctic, Neotropical, and Oriental regions (Monrós 1951c; Karren 1966). Includes 26 species, 10 represented in the Neotropics.

**Remarks.** Gressitt and Kimoto (1961) synonymized this genus with *Chlamisus*, yet, this decision has been ignored and is considered to be a valid genus (Karren 1966,



**Figure 30.** *Exema variopicta* Monrós <sup>(2)</sup>, left: habitus (dorsal view), right: habitus (lateral view).

1972; Seeno and Wilcox 1982; Riley et al., 2003). The relationship among Fulcidacini genera remains to be studied.

**Argentinian species checklist.**

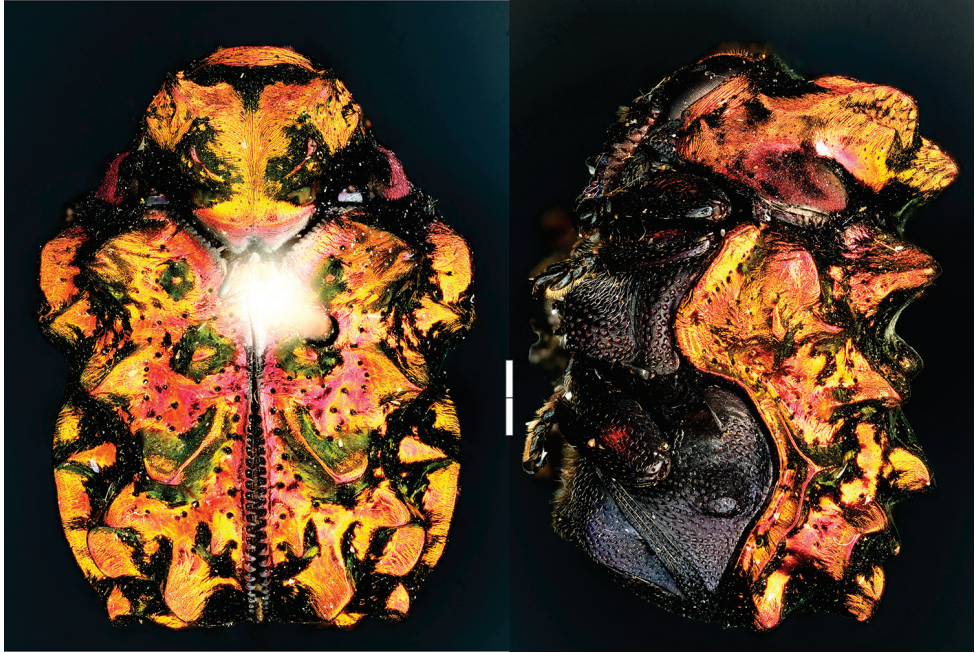
1. *Exema carinipennis* Monrós, 1951c (COR, MNS).
2. *Exema morio* (Kollar, 1824) (MNS).  
= *Chlamys dubia* Kollar, 1824.  
= *Chlamys globosa* Klug, 1824 (nec Kollar, 1824). Host plant: Bambuseae (Monrós 1951c).
3. *Exema serjaniae* Monrós, 1951c (CHA, FOR, SAL, TUC). Host plant: Sapindaceae: *Serjania* sp. (Jolivet 1978).
4. *Exema variopicta* Monrós, 1951c (COR, JUY, MNS, SAL, SLS). Host plant: Verbenaceae: *Lantana hypoleuca* and *Lipia salvifolia* (Bokermann 1963).

***Fulcidax* Voet, 1806**

Fig. 31

*Fulcidax* Voet 1806: 33; Jacoby 1880: 90; Monrós 1951c: 641; Blackwelder 1946: 650; Seeno and Wilcox 1982: 43; Chamorro-Lacayo and Konstantinov 2009: 76.  
= *Poropleura* Lacordaire 1848: 863.

**Type species.** *Fulcidax azureus* Voet, 1806 = *Clytra monstrosa* Fabricius, 1798, by monotypy.



**Figure 31.** *Fulcidax bacca* (Kirby)<sup>(2)</sup>, left: habitus (dorsal view), right: habitus (lateral view).

**Diagnosis.** This genus includes some of the larger and more charismatic species in the group (6.5–7.2 mm length). Body subquadrate and metallic, antenna serrate beyond antennomere III; the head with a longitudinally impressed vertex; elytral tubercles pronounced; posterior pronotal lobe with an acute notch; sutural serration of elytra well-developed beyond the middle of suture towards apex; ventrite I with lateral tubercles; fore- and midtibial apices with spine; tarsal claws simple. According to Chamorro-Lacayo and Konstantinov (2009), *Fulcidax* can be distinguished from all other genera of the tribe by the longitudinally impressed vertex of the head, simple tarsal claws, large body size, and usually bright metallic coloration.

**Distribution.** From Mexico to Argentina, with seven species.

**Remarks.** This is a small genus with only seven described species (Monrós 1951c). Chamorro-Lacayo and Konstantinov (2009), mistakenly cited *Fulcidax chimaera* (Lacordaire) for Argentina, this is present in Goiaz state of Brazil.

#### **Argentinian species checklist.**

1. *Fulcidax bacca* (Kirby, 1818) (CTS, JUY, MNS, SAL, TUC). Host plants: Fabaceae: *Acacia* sp., *Prosopis* sp. (Monrós 1951c); Malpighiaceae: *Mascagnia cordifolia*, *Banisteria stellaris*, *Banisteria argyrophylla* (Bokermann 1963).





**Figure 32.** *Melittochlamys specula* (Klug) <sup>(2)</sup>, left: habitus (dorsal view), right: habitus (lateral view).

***Melittochlamys* Monrós, 1948a**

Fig. 32

*Melittochlamys* Monrós, 1948a: 192; Fiebrig 1910: 253; Monrós 1949b: 617; Monrós 1951c: 666; Seeno and Wilcox 1982: 43; Chamorro-Lacayo and Konstantinov 2009: 80.

**Type species.** *Chlamys speculum* Klug 1824, by original designation.

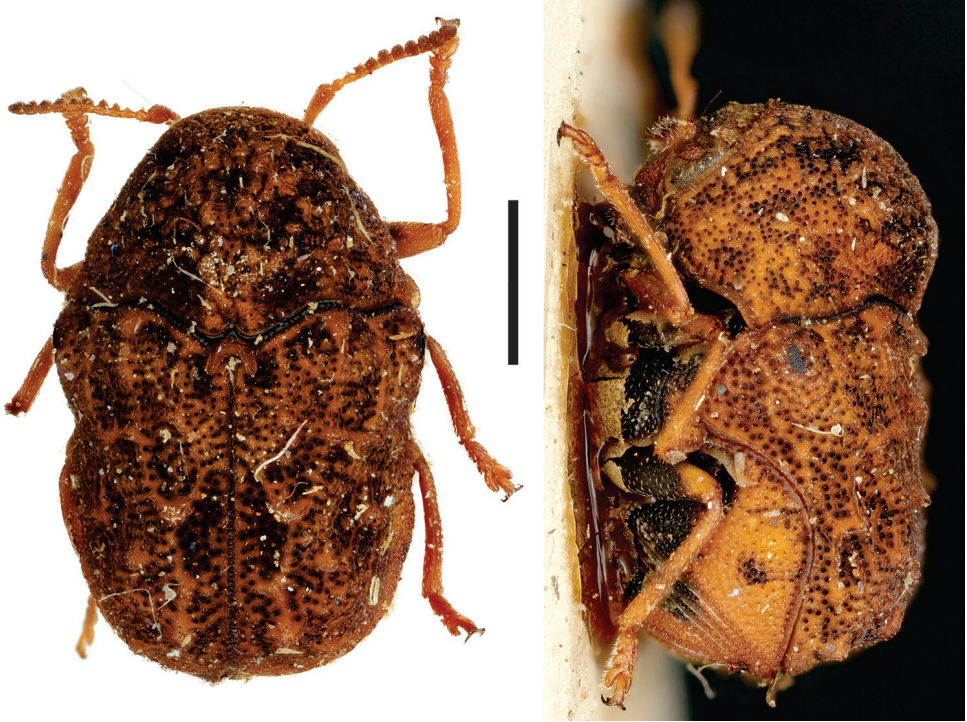
**Diagnosis.** *Melittochlamys* can be separated from all other genera by the nearly rectangular prosternal process; since the process is more or less triangular in all other genera of warty leaf beetles. Intermediate size (length 3.60-5.20 mm); body shape subglobular; antenna serrate beyond antennomere III, antennomere III slightly dilated distally; pronotum without median elevation, relatively smooth; sutural serration of elytra absent or weakly developed; elytra without well developed tubercles; appendiculate tarsal claws.

**Distribution.** The genus include 13 Neotropical species (Chamorro-Lacayo and Konstantinov 2009).

**Argentinian species checklist.**

1. *Melittochlamys specula* (Klug, 1824) (MNS). Host plant: Myrtaceae: *Psidium guayaba* y *Psidium* sp. (Araça) (Bokermann 1963).





**Figure 33.** *Pseudochlamys seminigra* (Jacoby) <sup>(2)</sup>, left: habitus (dorsal view), right: habitus (lateral view).

***Pseudochlamys* Lacordaire, 1848**

Fig. 33

*Pseudochlamys* Lacordaire 1848:644; Clavareau 1913: 209; Blackwelder 1946: 647; Monrós 1951c: 542; Karren 1972: 902; Seeno and Wilcox 1982: 43; Chamorro-Lacayo and Konstantinov 2009: 83.

**Type species.** *Pseudochlamys megalostomoides* Lacordaire 1848, by monotypy.

**Diagnosis.** *Pseudochlamys* can be distinguished from all other genera in the tribe by: head not completely retracted into prothorax; mandibles enlarged in males (sexual dimorphism); intercoxal prosternal process strongly and abruptly constricted beyond anterior margin; and prosternal process more than  $\frac{3}{4}$  as long as intercoxal prosternal process. These beetles are small sized (length 3.45–4.72 mm), cylindrical; body usually yellowish; canthus of eye as yellow as rest of frons; pronotum and elytra glabrous; head not completely retracted into prothorax; mandibles enlarged in males; antenna serrate beyond antennomere III, antennomere II slightly widened, globose, antennomere V as large as VI; posterior pronotal lobe with well differentiated notch; intercoxal prosternal process strongly and abruptly constricted beyond anterior margin; sutural serration of elytra complete; elytral tubercles poorly developed; tarsal claws bifid or appendiculate.

**Distribution.** This genus contains only five species, distributed in North, Central, and South America (Chamorro-Lacayo and Konstantinov 2009; Karren 1972).

**Argentinian species checklist.**

*Pseudochlamys seminigra* (Jacoby, 1904) (MNS).

## LAMPROSOMATINAE LACORDAIRE, 1848

Adults: Body compact, strongly convex; head inserted into prothorax (not visible from above). Pronotum convex tightly appressed to elytral base; antennal groove present on each side of prosternal process. Elytra covering pygidium. Larva differs from *Cryptocephalinae* as pointed out in previous section.

### Tribe Lamprosomatini Lacordaire, 1848

This tribe is composed of 10 genera (Seeno and Wilcox 1982) and 250 species (Chamorro 2014a). Four genera occur in the Neotropical region (Chamorro 2014a): *Lychnophaes* Lacordaire, *Dorisina* Monrós, *Lamprosoma* Kirby, and *Lamprosomoides* Monrós. It is the only Lamprosomatine tribe represented in Argentina where the fauna comprises 1 genus, *Lamprosoma*, and 8 species. *Lamprosoma* is characterized by the presence of a file on distal margin of last ventrite; last ventrite not excised in shape of arc; pygidium completely covered by elytra; scutellum acutely triangular (small to very small); elytral punctuation arranged in regular rows or with a tendency to form such rows.

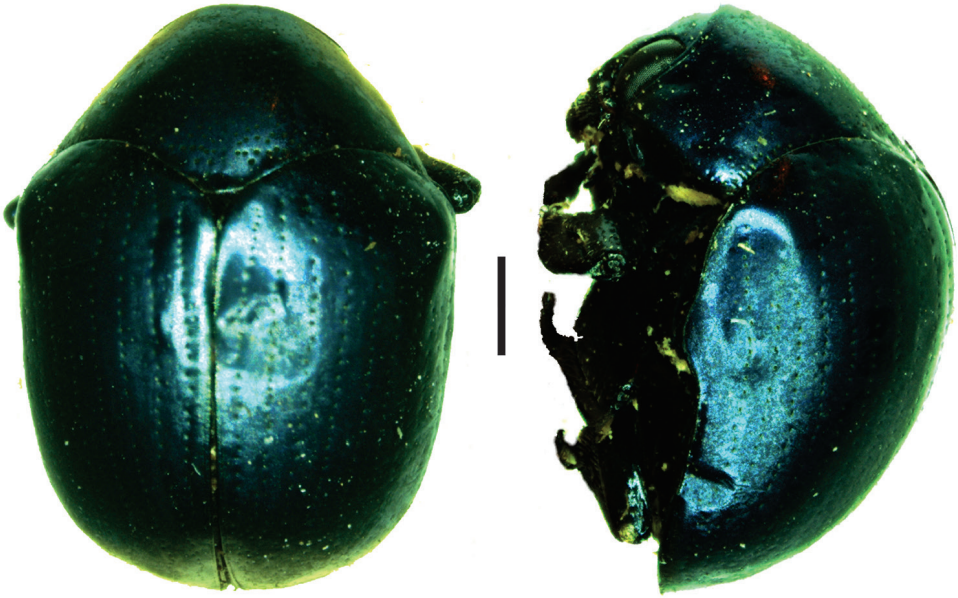
### *Lamprosoma* Kirby, 1818

Fig. 34

Kirby 1818: 445; Chevrolat in d'Orbigny 1846: 277; Lacordaire 1848: 574; Chapuis 1874: 216; Jacoby 1880: 90; Achard: 1914: 5; Monrós 1948b: 81; Monrós 1956b: 59; Monrós 1960: 9. Caxambú and Almeida 1999: 244; Caxambú and Almeida 2003: 330.

**Type species.** *Lamprosoma bicolor* Kirby, 1818: 445. By monotypy.

**Diagnosis.** body length about 4.5 mm; tarsal claws appendiculate with broad tooth; antenna short, antennomere VIII nearly as wide as VII or IX. Metallic coloration (some species multicolored), head not visible from above, clypeus excavate. According to Monrós (1956b) it can be differentiated from other Neotropical genera by having appendiculate claws at 180° angle, while *Dorisina* and *Lychnophaes* have simple claws at a more obtuse angle.



**Figure 34.** *Lamprosoma azureum* Germar <sup>(3)</sup>, left: habitus (dorsal view), right: habitus (lateral view).

**Distribution.** Nearctic, Neotropical, in Argentina limited to north, and north-eastern provinces.

**Remarks.** Adults feed on plants of the families Bombacaceae, Combretaceae, Melastomataceae, Mimosaceae. Therefore, some species have been considered as potential biological control agents for these plants (Caxambú and Almeida 2003).

**Argentinian species checklist.**

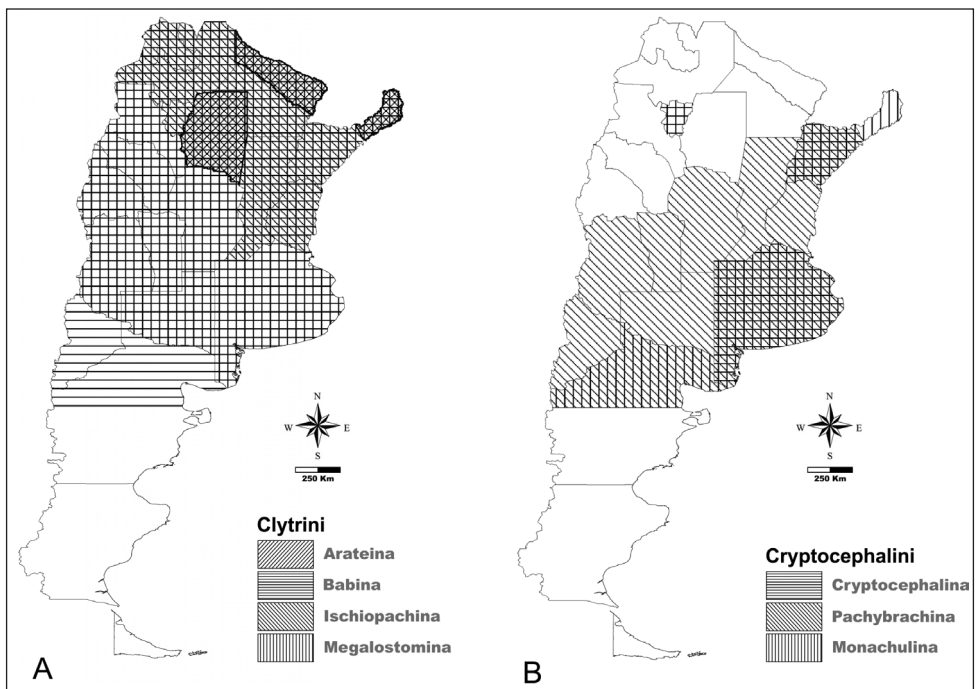
1. *Lamprosoma acaciae* Monrós, 1948b (JUY, SAL, TUC). Host plant: Fabaceae: *Acacia* spp. (Bark-gnawing).
2. *Lamprosoma azureum* Germar 1824 (MNS). This species newly cited for Argentina.
3. *Lamprosoma chorisiae* Monrós, 1948b (CHA).  
= *Lamprosoma chaguanacum* Monrós, 1948b. Parasitoids: Gellini and Hemitelini (Ichneumonidae) (Monrós 1948b). Host plant: Bombacaceae: *Chorisia* sp. (Monrós 1948b).
4. *Lamprosoma indigaceum* Monrós, 1947 (CTS).
5. *Lamprosoma minimum* Monrós, 1948b (SAL). Host plant: Fabaceae: *Acacia cavenia* (Bark-gnawing).
6. *Lamprosoma subnitidum* Monrós, 1948b (CTS).
7. *Lamprosoma triste* Guérin-Ménéville, 1844 (Northeast Argentina).
8. *Lamprosoma zariateguyi* Monrós, 1947 (MNS).

## Discussion and conclusions

This is the first comprehensive synthesis of Argentinian Camptosomata. This study may prove useful also for countries bordering Argentina. Similar contributions indicated the diversity of Camptosomata in other Neotropical countries as follows: Maes (1998) recorded 19 genera and 46 species for Nicaragua, Chaboo and Schöller (2016) accounted for 14 genera and 43 species for Peru; and in Brazil, 723 species, 26 subspecies in 37 genera of Cryptocephalinae (Sekerka et al. 2015) and 62 species in 5 genera of Lamprosomatinae (Sekerka 2017) were recorded.

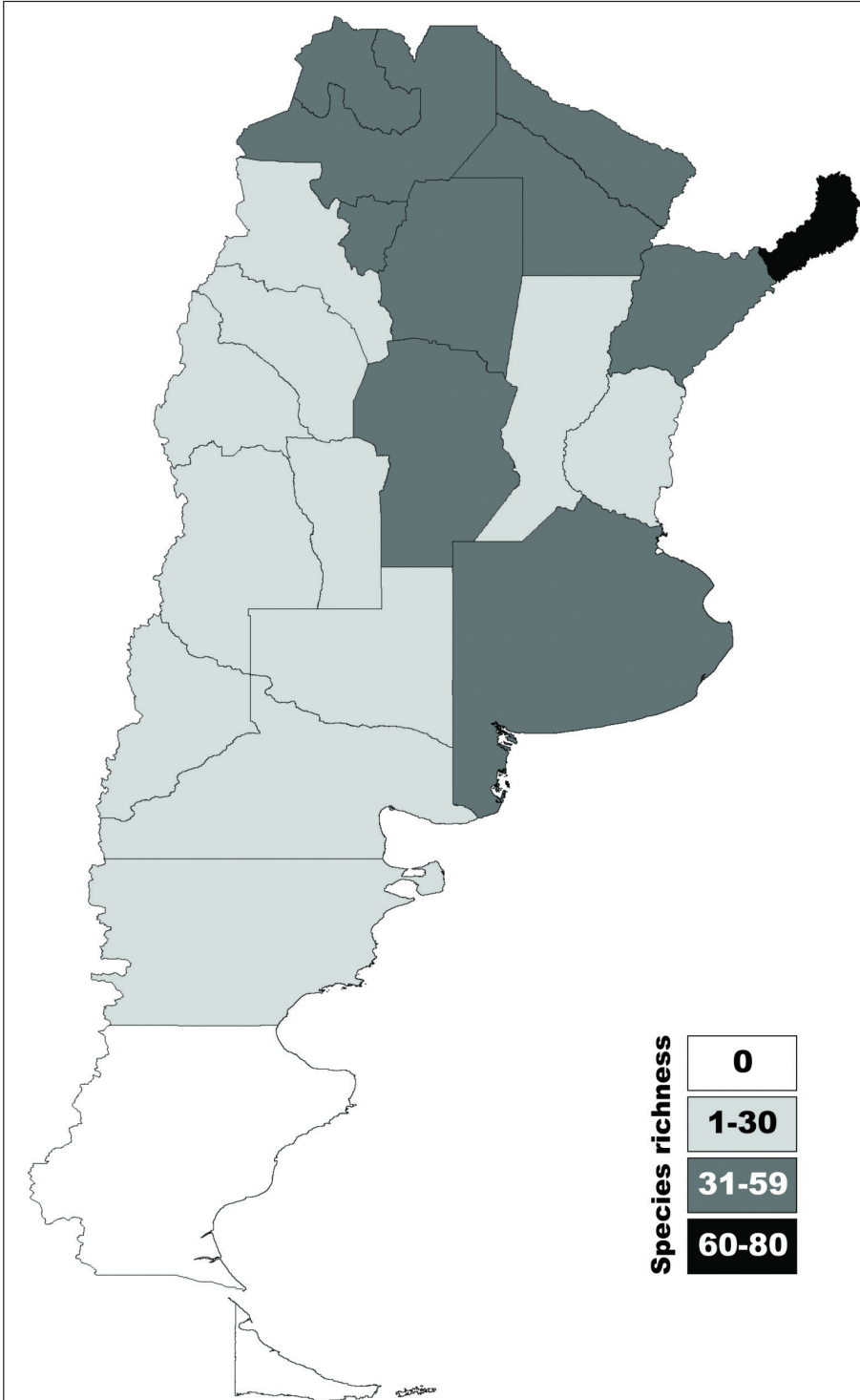
## Species richness and distribution patterns

Historically, Argentina has been divided in two main regions: Andean and Neotropical (Morrone, 2014). As depicted in the distribution pattern of Camptosomata tribes and subtribes by province (Fig. 35A–D), tribes are mostly distributed in the Neotropical region, while few species reach the Andean region or are found below 40° S latitude. Based on the map of species richness by province (Fig. 36) higher richness (up to 80 species) roughly coincides with the line dividing the Neotropical and Andean regions (Figs 1, 37). Poor data notwithstanding, this pattern fits at the latitudinal diversity gra-

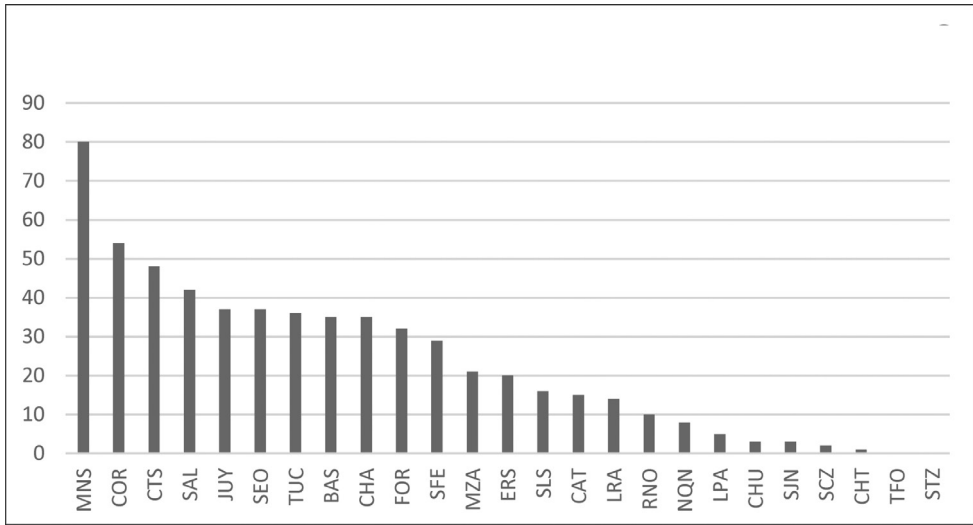


**Figure 35.** **A** Administrative divisions representing presence of subtribes of Clytrini as indicated in reference **B** Administrative divisions indicating presence of subtribes of Cryptocephalini as indicated in reference.

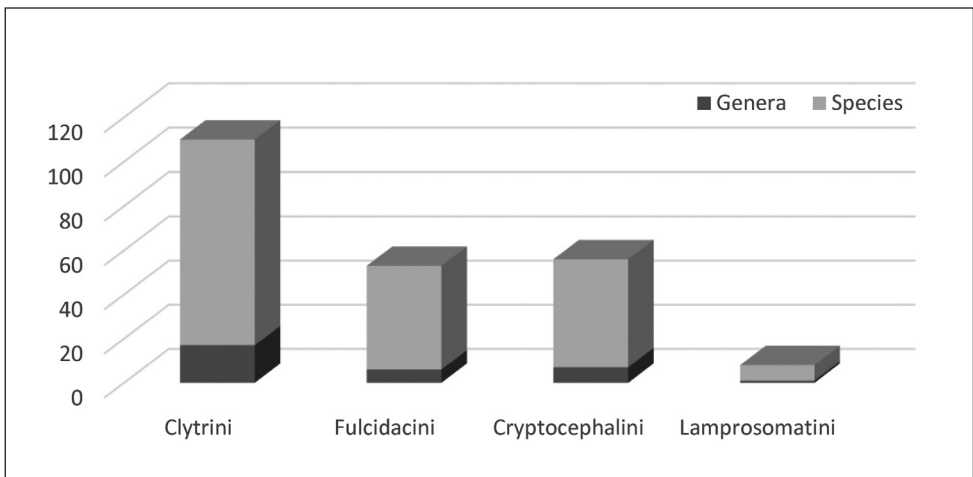




**Figure 36.** Map indicating species number (0–80) (richness) by province.



**Figure 37.** Bars diagram showing species by provinces, it can be observed that species richness diminished through southern provinces.



**Figure 38.** Bars diagram showing the number of genera and species by tribe of Argentinian Camptosomata.

dients hypothesis with greater species richness at tropical latitudes (Hillebrand 2004). Most of the central and northern provinces (*e.g.* CHA, COR, CTS, FOR, MNS, SAL, SEO, TUC) are presented on the left side of Figure 37, while most of southern provinces (CHT, CHU, NQN, SCZ, STZ, and TFO) appear on the right side, with few exception, for example the lack of information for SJN, ERS, or SLS.

Within Clytrini (Fig. 35A), *Arateina* is present in the northeastern provinces (FOR, MNS, SEO), while *Ischiopachina* is distributed throughout most of north-eastern Argentina. *Megalostomina* is present from northern Argentina to the central

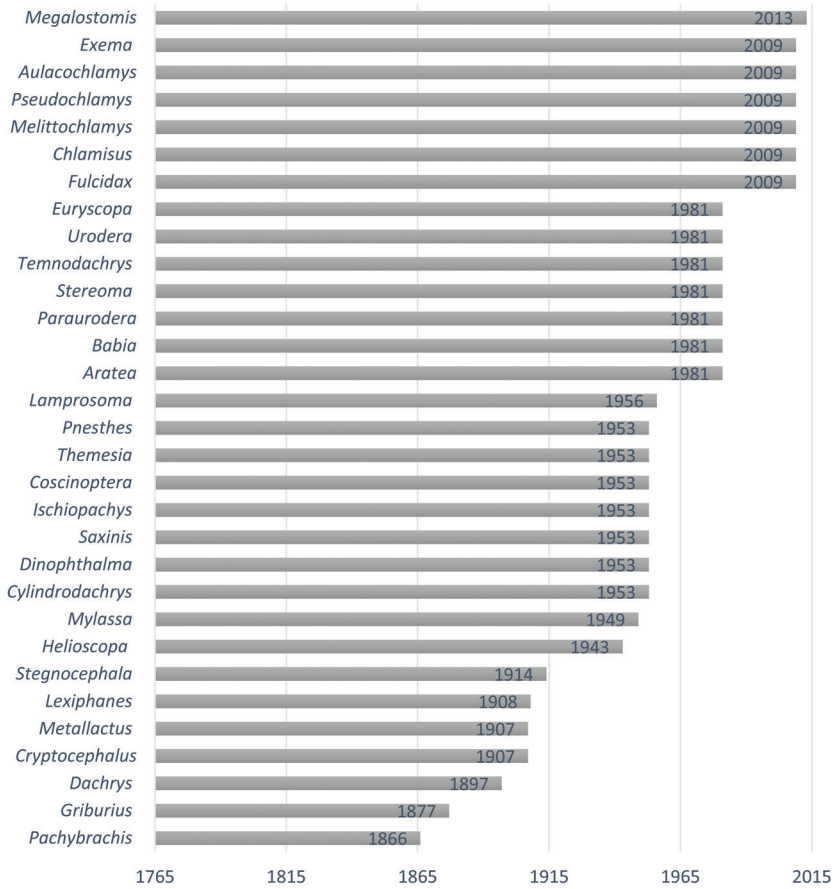
region (as far as MZA, LPA, and BAS). Babiina covers this same region, yet it reaches the southern provinces (NQN, and RNO). Clytrini has not been reported for the southern provinces beyond Rio Negro.

Cryptocephalini, on the other hand, is putatively mostly absent from the Northwestern provinces of Argentina. The presence of this tribe in Tucumán might indicate a more widespread distribution. Sampling bias and poor inventory may explain the absence of Fulcidacini in central and western regions of Argentina. The subtribes of Cryptocephalini (Fig. 35B) show a more widespread distribution for Cryptocephalina and Pachybrachina, while Monachulina are mostly recorded from Northeastern Argentina. Finally, Lamprosomatinae seems restricted to the Northern provinces, its absence in Formosa seems artificial, so presence of this subfamily surely will expand with more collecting in this region. According to current information, most species are distributed in the Neotropical provinces, especially: Araucaria forest, Chacoan, Monte, Pampean, Parana Forest, and Prepuna.

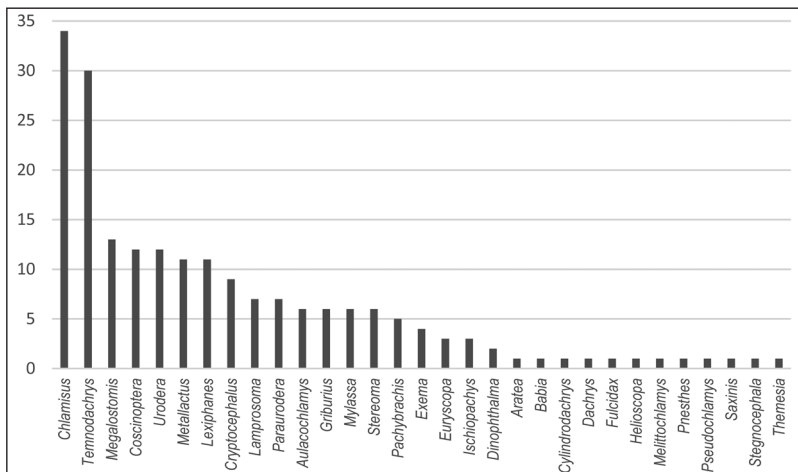
### **Current taxonomic knowledge, basic statistics and future research**

A total of 190 species (182 Cryptocephalinae + 8 Lamprosomatinae) of Camptosomata are currently known from Argentina. The most diverse group of Camptosomata in Argentina is Clytrini (Fig. 38). However, Clytrini is also, by far, the most studied group in Argentina due to the efforts of Monrós in the 1950's. The patchy distribution at administrative division levels clearly indicates the need for specimen identification and incorporation of museum specimens into databases, as well as collection of new specimens. The latter will permit the application of ecological modelling and biogeographic studies of the group that will provide a more complete picture of the biogeographic history and ecological tolerance ranges, as well as help guide conservation policies for the group. The current estimate of endemic species in Argentina is uncertain, and its calculation based on extant information would be inaccurate, especially without a complete species checklist of bordering countries (i.e. Bolivia, Brazil, Chile, Paraguay, and Uruguay). When comparing the timelines in Fig. 39 with the graphic indicating species richness by genus (Fig. 40), it becomes clear that (except for *Megalostomis*, recently revised by Agrain (2013), several of the most diverse genera have not been revised in over 100 years. Many species are only known from their original descriptions in the mid 19th or mid 20<sup>th</sup> century (Fig. 39). In many cases, the type specimens were not illustrated. This has resulted in long series of unidentified specimens housed in public and private collections awaiting the study of name bearing types.

Our synthesis here is a necessary step towards further comprehensive study of Argentinian Camptosomata that will facilitate field work, assist in determination of unidentified material housed in South American collections, creation of illustrated keys to the species level, and with identified specimens in hand achieve databasing of museum specimens. These elementary tasks are prerequisite to modern taxonomic revisions and evolutionary studies.



**Figure 39.** Timelines showing the years of the last work made on each genera that includes Argentinian species taxonomic treatment (simple checklist included).



**Figure 40.** Species number by genus.



## Acknowledgments

The authors' respective institutions supported this research. FAA is grateful to CONICET for continued research support, and ANPCyT (Agencia Nacional de Promoción Científica y Técnica, Argentina) for providing support through PICT#2013–2211. Additional support for this research was provided by the Synthesys Project (<http://www.synthesys.info/>) financed by the European Community Research Infrastructure Action, under GB-TAF-3383 and DE-TAF-4995. We are grateful to Cecilia Gorretta for providing some images. We also thank Shawn Clark and Chris Reid for their careful review of this manuscript, which included several useful comments and excellent suggestions that have greatly improved our work. USDA is an equal opportunity employer and provider.

## References

- Achard J (1914) Coleoptera Phytophaga Fam. Chrysomelidae Subfam. Lamprosominae. In: Wytzman P (Ed.) Genera Insectorum. Fascicule 159. Wytzman P., Brussels, 1–13. [2 pl]
- Achard J (1926) Notes sur les Megalostomini (Col Chrysomelidae). Fragments Entomologiques (Prague: Smichov) 65: 145–156.
- Agrain FA (2013) A taxonomic review of the genus *Megalostomis* Chevrolat (Coleoptera, Cryptocephalinae, Chrysomelidae). Zootaxa 3748(1): 001–109. <http://dx.doi.org/10.11646/zootaxa.3748.1.1>
- Agrain FA (2014) An interactive multi-entry key to the species of *Megalostomis* Chevrolat, with description of a new species from Paraguay (Chrysomelidae, Cryptocephalinae). ZooKeys 425: 59–69. <https://doi.org/10.3897/zookeys.425.7631>
- Agrain FA, Buffington ML, Chaboo CS, Chamorro ML, Schöller M (2015) Leaf beetles are ant-nest beetles: the curious life of the juvenile stages of case-bearers (Coleoptera, Chrysomelidae, Cryptocephalinae). ZooKeys 547: 133–164. <http://dx.doi.org/10.1111/j.1365-3113.2011.00584.x>
- Agrain FA, Marvaldi AE (2009) Morphology of the first instar larva in the tribe Clytrini, with two new descriptions in the subtribe Megalostomina (Coleoptera: Chrysomelidae: Cryptocephalinae). Zootaxa 2147: 59–68.
- Agrain FA, Roig-Juñent S (2011) Systematics and cladistics of *Megalostomis* Chevrolat, and the biogeography of Clytrini (Coleoptera: Cryptocephalinae). Systematic Entomology 36(4): 672–704. <https://doi.org/10.1111/j.1365-3113.2011.00584.x>
- Agrain FA, Roig-Juñent S, Dominguez MC (2007) Taxonomic revision and preliminary phylogenetic analysis of the subgenus *Megalostomis* (*Scaphigenia*) Lacordaire (Coleoptera: Chrysomelidae). Insect Systematics and Evolution 38: 335–359. <https://doi.org/10.1163/187631207788754402>
- Aranda SG, Córdoba SP, Sánchez FR (2016) Catálogo de los Tipos Primarios de Coleoptera depositados en la Colección Entomológica del Instituto – Fundación Miguel Lillo. Acta zoológica lilloana 60(1): 10–46.

- Aravena RO (1940) Coleópteros de la región Sud-Oeste de la provincia de Buenos Aires. Revista de la Sociedad Entomológica Argentina Buenos Aires 10(4): 347–350.
- Aravena RO (1974) Insectos de La Pampa (Coleópteros) Biblioteca Pampeana, Prov. de La Pampa, Consejo Provincial de difusión, 166 pp.
- Bachmann AO, Cabrera N (2010) A catalog of the types of Chrysomelidae *sensu lato* (Insecta, Coleoptera, Polyphaga) deposited in the Museo Argentino de Ciencias Naturales, Buenos Aires. Vol. 12, 57–80.
- Balsbaugh EU Jr (1966) Genus *Lexiphanes* of America north of Mexico (Coleoptera: Chrysomelidae). Proceedings of the United States National Museum 117(3521): 655–680.
- Baly JS (1877a) Descriptions of new species of Phytophagous Coleoptera. Cistula entomologica 2: 179–185.
- Baly JS (1877b) Descriptions of new genera and species of phytophagous beetles belonging to the family Cryptocephalidae, together with diagnoses and remarks on previously described genera. Transactions of the entomological Society of London 25(1): 23–36. <https://doi.org/10.1111/j.1365-2311.1877.tb02899.x>
- Baly JS (1877c) Descriptions of new genera and species of Cryptocephalidae. Transactions of the entomological Society of London 25(3): 211–232. <https://doi.org/10.1111/j.1365-2311.1877.tb02912.x>
- Blackwelder RE (1946) (Chrysomelidae) Checklist of the coleopterous insects of México, Central America, The West Indies, and South America. United States National Museum Bulletin 185(4): 627–764.
- Blanchard E (1851) Fauna, tomo 5. In: Gay C (Ed.) Historia Física y Política de Chile. Imprenta de Maulde et Renou, Paris, 285–563.
- Boheman CH (1858) Coleoptera. Species novas descripsit. In: Virgin CA (Ed.) Kongliga Svenska Fregatten Eugenies Resa omkring jorden under befäl af C.A. Virgin Åhren 1851–1853. Vettenskapliga iakttagelser på H.M. Konung Oscar Den Förstes befallning. P.A. Norstedt & Söner, Stockholm, 1–617. [pl. I–IX. pp. 113–218]
- Bokermann WCA (1963) Observaciones biológicas sobre diversos Chlamisinae (Coleoptera, Chrysomelidae) (13ª contribución). Studia entomologica 6: 433–448.
- Bosq JM (1943) Segunda lista de coleópteros de la República Argentina dañinos a la agricultura. Ministerio de Agricultura de la Nación, Dirección de Sanidad Vegetal 4: 1–80.
- Brown CG, Funk DJ (2005) Aspects of the natural history of *Neochlamisus* (Coleoptera: Chrysomelidae): fecal case-associated life history and behavior, with a method for studying insect constructions. of the Entomological Society of America 98(5): 711–725.
- Bruch C (1914) Catálogo sistemático de los coleópteros de la república Argentina. Pars. IX. Familias: Chrysomelidae, Cassidae, Hispididae, Languridae, Erotylidae, Coccinellidae y Endomychidae. Revista del Museo de La Plata 19(2): 346–400.
- Burlini M (1953) Une nouvelle espece de *Cryptocephalus* de Maroc: *Cryptoc. Kocheri* Burlini (Coleoptera: Chrysomelidae). Bulletin de la Société de Sciences Naturelles du Maroc Rabat, 5: 73–75.
- Burmeister H (1877) Phytophaga Argentina. Stettiner Entomologische Zeitung 38: 52–71.
- Cabrera AL, Willink A (1973) Biogeografía de América Latina. Colección de Monografías Científicas O.E.A., Washington D.C., Biología 13.

- Cabrera N, Roig-Juñent S (1998a) Chrysomelidae y Megalopodidae. In: Morrone JJ, Coscarón S (Eds) Biodiversidad de artrópodos argentinos. Ed. Sur, La Plata, 244–257.
- Cabrera N, Roig-Juñent S (1998b) Los ejemplares tipo de Chrysomelidae (Coleoptera) depositados en la colección del Museo de la Plata. Universidad Nacional de La Plata, Facultad de Ciencias Naturales y Museo, Serie Técnica y didáctica.
- Caxambú MG, Almeida LM (1999) Descrição dos estágios imaturos e redescrção de *Lamprosoma azureum* Germar (Chrysomelidae, Lamprosomatinae). Revista Brasileira de Zoologia Curitiba 16(Supl. 1): 243–256. <https://doi.org/10.1590/S0101-81751999000500017>
- Caxambú MG, Almeida LM (2003) *Lamprosoma* W. Kirby (Coleoptera, Chrysomelidae): descrição de nova espécie, redescrções e chave para algumas espécies sul americanas. Revista Brasileira de Zoologia 20: 329–337. <https://doi.org/10.1590/S0101-81752003000200025>
- Chaboo CS (2007) Biology and phylogeny of the Cassidinae (tortoise and leaf-mining beetles) (Coleoptera: Chrysomelidae). Bulletin of the American Museum of Natural History 305: 1–250.
- Chaboo CS, Brown CG, Funk DJ (2008) Fecal case architecture in the gibbosus species group of *Neochlamisus* Karren (Coleoptera: Chrysomelidae: Cryptocephalinae: Chlamisini). Zoological Journal of the Linnean Society 152: 315–351. <https://doi.org/10.1111/j.1096-3642.2007.00343.x>
- Chaboo CS, Schöller M (2016) Beetles (Coleoptera) of Peru: A Survey of the Families. Chrysomelidae: Cryptocephalinae and Lamprosomatinae. Journal of the Kansas Entomological Society 89(00): 178–181. <https://doi.org/10.2317/140429.1>
- Chamorro ML (2013) On the identity of *Mastacanthus* Suffrian, 1852 and *Sternoglossus* Suffrian, 1866 and key to world genera of Pachybrachina (Chrysomelidae: Cryptocephalinae: Cryptocephalini). Caucasian Entomological Bulletin 9(1): 201–206.
- Chamorro ML (2014a) Chrysomelidae: 2.7.4 Lamprosomatinae Lacordaire, 1848. In: Leschen RAB, Beutel RG, Lawrence JF (Eds) Handbook of Zoology. Arthropoda: Insecta. Coleoptera, Beetles. Vol. 3: Morphology and Systematics (Phytophaga). Berlin: Walter De Gruyter, 226–230.
- Chamorro ML (2014b) Chrysomelidae: 2.7.5 Cryptocephalinae Gyllenhal, 1813. In: Leschen RAB, Beutel RG, Lawrence JF (Eds) Handbook of Zoology. Arthropoda: Insecta. Coleoptera, Beetles. Vol. 3: Morphology and Systematics (Phytophaga). Walter De Gruyter, Berlin, 230–236.
- Chamorro-Lacayo ML, Konstantinov AS (2004) Morphology of the prothorax and procoxa in the New World Cryptocephalini (Coleoptera: Chrysomelidae: Cryptocephalinae). Zootaxa 676: 1–46.
- Chamorro-Lacayo ML, Konstantinov AS (2009) Synopsis of warty leaf beetle genera of the world (Coleoptera, Chrysomelidae, Cryptocephalinae, Chlamisini). ZooKeys 8: 63–88. <https://doi.org/10.3897/zookeys.8.90>
- Chamorro ML, Konstantinov AS (2011) Cachiporrini, a remarkable new tribe of Lamprosomatinae (Coleoptera, Chrysomelidae) from South America. ZooKeys 78, 43–59. <https://doi.org/10.3897/zookeys.78.980>
- Chapuis F (1874) Famille des Phytophages. In: Laccordaire T, Chapuis F (Eds) Histoire naturelle des insectes. Genera des Coléoptères. Libraire Encyclopédique de Roret, Paris Vol. 10, 455 pp.

- Chevrolat LAA (1836) Catalogue des coléoptères de la collection de M. le comte Dejean. Deuxième Édition [Livraison 5]. In: Dejean PFMA (Ed.) Troisième édition, revue, corrigée et augmentée. 1–4. Méquignon-Marvis, Paris, 468 pp. [end of 1836 (Madge 1988: 318)]
- Chevrolat LAA (1842) In: C. d'Orbigny (Ed.) Dictionnaire universel d'histoire naturelle, Vol. 2. C. Renard, Paris, 795 pp.
- Chevrolat LAA (1846) *Monoplatus*. In: d'Orbigny C (Ed.) Dictionnaire universel d'histoire naturelle Tome huitième [Livraisons 85–92]. Renard MM, Martinet et Cie., Paris, 333. [21 Sep–14 Dec 1846. (Evenhuis 1997: 576)]
- Clavareau H (1913) Pars 53. Chrysomelidae: 5. Megascelinae, 6. Megalopodinae, 7. Clytrinae, 8. Cryptocephalinae, 9. Chlamydinae, 10. Lamprosominae. In: Schenkling S (Ed.) Coleopterorum Catalogus. Junk W, Berlin, 278 pp.
- Cordo HA, DeLoach CJ (1995) Natural Enemies of the Rangeland Weed Whitebrush *Aloysia gratissima*: Verbenaceae) in South America: Potential for Biological Control in the United States. *Biological control* 5: 218–230. <https://doi.org/10.1006/bcon.1995.1027>
- Dejean PFMA (1836) Catalogue des coléoptères de la collection de M. le comte Dejean. Deuxième Édition [Livraison 5]. In: Dejean PFMA (Ed.) Troisième édition, revue, corrigée et augmentée. 1–4. Méquignon-Marvis, Paris, 468 pp. [end of 1836 (Madge 1988: 318)]
- De Monte T (1957) Prima nota sull'apparato plasmatore degli escrementi, caratteristica modificazione dell'intestino retto femminile in alcune tribù della sottofamiglia Clytrinae. *Memorie Società Entomologica Italiana* 36: 143–159.
- Erber D (1988) Biology of Camptosoma Clytrinae–Cryptocephalinae–Chlamisinae–Lamprosomatinae. In: Jolivet P, Petitpierre E, Hsiao T (Eds) *Biology of Chrysomelidae*. Kluwer Academic Publishers, London, 513–552. [https://doi.org/10.1007/978-94-009-3105-3\\_30](https://doi.org/10.1007/978-94-009-3105-3_30)
- Erichson WF (1834) Coleoptera. In: Meyen FJ (Ed.) *Beitrag zur Zoologie, gesammelt auf einer Reise um die Erde*. Nova Acta Academia Caesarea Leopoldino-Carolina Germanica Naturae Curiosorum 16(Suppl. 1): 219–276. [illus. 1847]
- Erichson WF (1847) *Conspectus Insectorum Coleopterorum, quae in Republica Peruana observata sunt*, auctore. *Archiv für Naturgeschichte* 13: 67–185.
- Evenhuis NL (1997) *Litteratura taxonomica dipterorum (1758–1930)*. Volume II. L-Z. Backhuys Publishers, Leiden, 427–871.
- Fabricius JC (1798) *Supplementum entomologiae systematicae*. Hafniae. Copenhagen, Proft and Storch, 572 pp.
- Fabricius JC (1801) *Systema Eleutheratorum secundum ordines, genera, species: adiectis synonymis, locis, observationibus, descriptionibus*. Kiliae: Bibliopolii Academici Vol. 2, 687 pp.
- Fiebrig K (1910) Cassiden und Cryptocephaliden Paraguays. Ihre Entwicklungsstadien und Schutzvorrichtungen. *Zoologisches Jahrbuch* 12(2): 161–264. <https://doi.org/10.5962/bhl.title.60191>
- Fleming J (1822) *The philosophy of zoology; or a general view of the structure, functions, and classification of animals*. In two volumes. With engravings. Edinburgh, Vol. II, 618 pp.
- Forsberg CP (1821) *Monographia Clythrae*. Nova Acta Regiae Societatis Scientiarum Upsaliensis, Upsala 8: 258–292.
- Gemminger M, von Harold E (1874) *Catalogus coleopterorum hucusque descriptorum synonymicus et systematicus*. Tom. XI. Chrysomelidae (Pars I.). Sumptu G. Beck, Monachii, 3276–3361.



- Geoffroy EL (1762) Histoire abrégée des insectes qui se trouvent aux environs de Paris; dans laquelle ces animaux sont rangés suivant un ordre méthodique. Durand, Paris, Tome premier, 1–2, 1–28, 1–523. [Pl. 1–10] <https://doi.org/10.5962/bhl.title.14710>
- Germar EF (1824) Insectorum species novae aut minus cognitae, descriptionibus illustratae. Vol. 1. Coleoptera. Hendelii J.C. et filii., Halae, 624 pp. [2 pls.]
- Gistel J (1848) Naturgeschichte des Thierreichs für höhere schulen bearbeitet. Stuttgart, 216 pp. [32 pls]
- Gressitt JL (1946) Chinese chrysomelid beetles of the subfamily Chlamisinae. *Annals of the Entomological Society of America* 39: 84–100. <https://doi.org/10.1093/aesa/39.1.84>
- Gressitt JL, Kimoto S (1961) The Chrysomelidae (Coleopt.) of China and Korea Part I. *Pacific Insects Monograph* 1A, 1–299.
- Guérin J (1943) Clitrideos do Brasil. *Arquivos do Museu Paranaense (Curitiba, Brazil)* 3: 3–94.
- Guérin J (1944) Notas sôbre Clytridae Neotropicais. *Revista Brasileira de Biologia* 4(4): 513–516.
- Guérin J (1945) Novos Clytridae (Col.) da Republica Argentina. *Revista de Entomología (Rio de Janeiro)* 16: 447–449.
- Guérin J (1949) Descrição de Novas espécies Neotropicais des familias Clytridae, Megalopodiidae e Erotylidae (Col.). *Revista de Entomología (Rio de Janeiro)* 20(1–3): 229–236.
- Guérin J (1952) Contribucao para o conhecimento dos Clytridae Neotropicais (Coleoptera). *Dusenia* 3(3): 203–211.
- Guérin–Méneville FE (1844) Iconographie du règne animal de G. Cuvier, ou représentation d'après nature de l'une des espèces les plus remarquables, et souvent non encore figurées, de chaque genre d'animaux. Avec un texte descriptif mis au courant de la science. Ouvrage pouvant servir d'atlas à tous les traités de zoologie. Insectes. Texte. J. B. Baillière, Paris, 576 pp.
- Gyllenhal L (1813) *Insecta Suecica. Classis I. Coleoptera sive Eleuterata, Tomus I, pars III.* Scaris, 734 pp.
- Haldeman SS (1849) *Cryptocephalarum Boreali-Americae diagnoses, cum speciebus novis museilecontiani.* *Proceedings of the Academy of Natural Sciences of Philadelphia* 4: 169–171.
- Harold E von (1875) Ueber Chrysomelidae aus Cordova. *Coleopterologische Hefte* XIV, 95–101.
- Hayward KJ (1944) Primera Lista de Insectos Tucumanos Perjudiciales, Primer Suplemento. *Publicación Miscelánea Estación Experimental Agrícola de Tucumán* 4: 1–32.
- Hillebrand H (2004) On the generality of the latitudinal diversity gradient. *American Naturalist* 163: 192–211. <https://doi.org/10.1086/381004>
- Horn HMD (1892) Studies in Chrysomelidae. *Transactions of the American Entomological Society* 19: 8–17.
- Ihering H von (1904) Bibliografía, 1902-1904. *Historia Natural e Antropología do Brasil.* *Revista do Museu Paulista*, 6: 584–659.
- Ihering H von (1907) Les Mollusques fossiles du Tertiaire et du Crétacé supérieur de l'Argentine. *Anales Museo Nacional de Buenos Aires* 15(serie 3, tomo 7): 1–611.
- Jacoby M (1876) Descriptions of new Genera and Species of Phytophagous Coleoptera. *Proceedings of the Zoological Society of London* 44(1): 807–817. <https://doi.org/10.1111/j.1096-3642.1876.tb02617.x>
- Jacoby M (1880) *Biologia Centrali–Americana, Insecta. Coleoptera. Phytophaga (part).* Volume VI, Part 1. Porter, RH, London, 26–105.

- Jacoby M (1889) *Biologia Centrali–Americana*, Insecta. Coleoptera. Supplement Phytophaga (part) 6(1): 81–168.
- Jacoby M (1897) Descriptions of some new species of Clythridae and Eumolpidae. *Entomologist* 30: 261–264.
- Jacoby M (1901) Descriptions of some new species of phytophagous Coleoptera of the family Chlamydae. *Proceedings of the Zoological Society of London* 1: 153–164.
- Jacoby M (1904) Descriptions of some new species of phytophagous Coleoptera obtained by Baron E. Nordenskiöld in Bolivia and the Argentine Republic. *Arkiv for Zoologi* 1: 513–524.
- Jacoby M (1907) Descriptions of new Species of South–American Beetles of the Cryptocephaline Division of the Family Chrysomelidae. *Proceedings of the Zoological Society of London* 77: 829–855. <https://doi.org/10.1111/j.1469-7998.1907.tb06961.x>
- Jacoby M (1908) The fauna of British India, including Ceylon and Burma. Coleoptera. Chrysomelidae. Vol. 1. Taylor and Francis, London, 534 pp.
- Jacoby M, Clavereau H (1906) Coleoptera Phytophaga Fam. Chrysomelidae Subfam. Clytrinae. In: Wytzman P (Ed.) *Genera Insectorum*, Wytzman P, Brussels, 49: 1–87.
- Jacoby M, Clavereau H (1907) Coleoptera Phytophaga Fam. Chrysomelidae Subfam. Clytrinae. In: Wytzman P (Ed.) *Genera Insectorum* P. Wytzman, Brussels, 49 bis, 88.
- Jakobson G (1924) De genere *Mylassa* Stål. *Russkoe entomologicheskoe obozrenie* 18: 257–258.
- Jerez V, Briones R (2010) *Mylassa crassicollis* (Blanchard, 1851) (Coleoptera: Chrysomelidae: Cryptocephalinae): Biology and description of immature stages. *The Coleopterist Bulletin* 64: 31–38. <https://doi.org/10.1649/0010-065X-64.1.31>
- Jolivet P (1978) Selection trophique chez les Clytrinae, Cryptocephalinae et Chlamisinae (Camposoma) et les Lamprosomatinae (Cyclica) (Coleoptera Chrysomelidae). *Acta Zoológica et Pathologica Antverpiensia* 70: 167–200.
- Jolivet P, Hawkeswood TJ (1995) Host-plants of Chrysomelidae of the world. Backhuys Publishers, Leiden, 281 pp.
- Karren JB (1966) A revision of the genus *Exema* of America, north of Mexico (Chrysomelidae, Coleoptera). *The University of Kansas Science Bulletin* 46: 647–695.
- Karren JB (1972) A revision of the subfamily Chlamisinae of America north of Mexico (Coleoptera: Chrysomelidae). *The University of Kansas Science Bulletin* 49: 875–988.
- Kaup JJ (1829) *Skizzirte Entwicklungs–Geschichte und natürliches System der europäischen Thierwelt*. Darmstadt, 204 pp.
- Kirby W (1818) A century of insects, including several new genera described from his cabinet. *Transactions of the Linnean Society of London* 12: 375–453. <https://doi.org/10.1111/j.1095-8339.1817.tb00239.x>
- Kirby W (1837) Insects. In: Richardson J (Ed.) *Fauna Boreali–Americana; or the zoology of the northern parts of British America*. Part 4. Longmans, London:, xxxix 325 pp. 8 pls.
- Klug F (1824) *Entomologische Monographien*, I. Berlin Reimer, 242 pp. <https://doi.org/10.5962/bhl.title.3346>
- Knoch AW (1801) *Neue Beyträge zur Insectenkunde*, vol. 1. Schwinkert, Leipzig, 208 pp. <https://doi.org/10.5962/bhl.title.10684>
- Kollar V (1824) *Monographia chlamydim*, 2 pls. Vienna, 49 pp.

- Lacordaire MTh (1845) Monographie des coléoptères subpentamères de la famille des phytophages. Tome I. Mémoires de la Société Royale des Sciences de Liège 3(1): 1–740.
- Lacordaire MTh (1848) Monographie des Coléoptères subpentamères de la famille des phytophages, Vol 2. Mémoires de la Société royale belge d'Entomologie. Liège 5: 1–890.
- Lacordaire MTh, Chapuis F (1854) Histoire naturelle des insectes. Genera des coléoptères, ou exposé méthodique et critique de tous les genres proposés jusqu'ici dans cet ordre d'insectes, par m. Th. Lacordaire (Vol. v.6 [t.10]). Paris: Librairie encyclopédique de Roret, 94–220. <https://doi.org/10.5962/bhl.title.8864>
- Laicharting JN von (1781) Verzeichniss und Beschreibung der Tyroler Insecten. I Theil Käferartige Insecten. I Band. Füessly, Zurich, 248 pp.
- Lamarck JBPA de Monet (1799) Prodrome d'une nouvelle classification des coquilles, comprenant une rédaction appropriée des caractères génériques, et l'établissement d'un grand nombre de genres nouveaux. Mémoires de la Société d'Histoire Naturelle de Paris, 1 [an VII], 63–91, 1 tableau. Paris.
- Latreille PA (1810) Considérations générales sur l'ordre naturel des animaux composant les classes des crustacés, des arachnides, et des insectes; avec un tableau méthodique de leurs genres, disposés en familles. Schoell, F., Paris, 444 pp.
- Leng CW (1918) Notes on some changes in the list of Coleoptera. Journal of the New York Entomological Society 26: 201–211.
- Leng CW (1920) Catalogue of the Coleoptera of America North of Mexico. New York, 470 pp.
- Lopatin IK (1965) Contributions to the systematics of the genus *Cryptocephalus* Geoffr. (Coleoptera, Chrysomelidae). Československá Společnost Entomologická, 62(6): 451–457.
- Löwenberg-Neto P (2014) Neotropical region: a shapefile of Morrone's (2014) biogeographical regionalization. Zootaxa 3802(2): 300–300. <https://doi.org/10.11646/zootaxa.3802.2.12>
- Madge RB (1988) The publication dates of Dejean's catalogues. Archives of Natural History 15: 317–321. <https://doi.org/10.3366/anh.1988.15.3.317>
- Maes JM (1998) Insectos de Nicaragua. Catálogo de los Insectos y Artrópodos Terrestres de Nicaragua, Volume II, Imprenta Print, León, Nicaragua, 487–1169.
- Mannerheim CG von (1843) Beitrag zur Käferfauna der Aleutischen Inseln, der Insel Sitka und Neu-Californiens. Bulletin de la Société Impériale des Naturalistes de Moscou 16: 175–314.
- Moldenke AR (1970) A revision of Clytrinae of North America, North of the Isthmus of Panama (Coleoptera: Chrysomelidae). Stanford University, 310 pp.
- Moldenke AR (1981) A Generic reclassification of the New World Clytrinae (Coleoptera: Chrysomelidae). Entomologische Arbeiten aus dem Museum G. Frey 29: 75–116.
- Monrós F (1944) Descripción de un nuevo clítrido argentino. Revista de la Facultad de Agronomía y Veterinaria. Universidad Nacional de Buenos Aires 11(1): 148–152.
- Monrós F (1945) A propósito de algunos Chrysomeloidea Neotropicales (Coleoptera). Notas del Museo de La Plata. Instituto del Museo de la Universidad Nacional de La Plata. Buenos Aires, Argentina 10 (Zoología) 86: 143–155.
- Monrós F (1947) Descripciones y comentarios relativos a Chrysomeloidea. Acta Zoológica Lilloana 4: 155–174.

- Monrós F (1948a) Descripción de diez nuevos Camptosoma neotropicales (Col. Chrysomeloidea). Acta Zoológica Lilloana 6: 171–200.
- Monrós F (1948b) Descripción de diez nuevas especies de *Lamprosoma* neotropicales (Col. Chrysomeloidea). Acta Zoológica Lilloana 5: 81–95.
- Monrós F (1949a) El género *Mylassa* Stål 1857 (Coleoptera, Chrysomelidae, Crytocephalinae). Acta Zoológica Lilloana 7: 489–574.
- Monrós F (1949b) Descripción de seis Chlamisinae Neotropicales (Col., Chrysomelidae) (2a contribución al conocimiento de Chlamisinae). Revista de Entomología (Rio de Janeiro) 20: 617–629.
- Monrós F (1950) Descripciones y comentarios sobre “Chlamisinae” Neotropicales (Col., Chrysomelidae). Revista Brasileira de Biología 10: 409–424.
- Monrós F (1951a) Description of new Neotropical Megalostomini. Annals and Magazine of Natural History 12(4): 1146–1158. <https://doi.org/10.1080/00222935108654245>
- Monrós F (1951b) Descripción de diez nuevas especies de Babiini neotropicales. Revista de la Sociedad entomológica Argentina 15: 149–161.
- Monrós F (1951c) Revisión de las especies argentinas de Chlamisinae (Col., Chrysomelidae) (5ª contribución al conocimiento de Chlamisinae). Acta Zoológica Lilloana 10: 489–672.
- Monrós F (1953a) Revisión sistemática de las especies de Clytrinae de la Argentina, Paraguay, Uruguay y Chile (Col. Chrysomelidae). Acta Zoológica Lilloana 14: 5–274.
- Monrós F (1953b) Some corrections in the nomenclature of Clytrinae. The Coleopterists Bulletin 7(6): 45–50.
- Monrós F (1956a) Sur quelques Clytrinae du Museum de Paris (Col. Chrysomelidae). Revue française d'Entomologie 23: 161–164.
- Monrós F (1956b) Revisión genérica de Lamprosomatinae con descripción de la algunos géneros y especies nuevas (Col., Chrysomelidae). Revista Agronomía Noroeste Argentino (Tucumán) 2(1): 25–77.
- Monrós F (1960) Supplementa. Chrysomelidae: Lamprosomatinae. In: Hincks WD (Ed.). Coleopterorum Catalogus. Dr W. Junk, Gravenhage, 3–16.
- Monrós F, Bechyné B (1956) Ueber einige verkannte Chrysomeliden-Namem. Entomologische Arbeiten aus dem Museum G. Frey 7: 1118–1137.
- Morrone JJ (2014) Biogeographical regionalization of the Neotropical region. Zootaxa 3782(1): 1–110. <https://doi.org/10.11646/zootaxa.3782.1.1>
- Müller OF (1764) Fauna Insectorum Fridrichsdalina, sive methodica descriptio insectorum agra Fridrichsdalina, cum characteribus genericis, Hafniae et Lipsiae, 96 pp.
- Navajas E (1946) Os genotipos da Fam. Fulcidacidae (Col. Chrysomelidae). Papeis avulsos do Departamento de Zoologia 7: 243–245.
- Olivier GA (1791) Fulgore, Fulgora. Encyclopedie méthodique. Histoire naturelle des animaux. Insectes 6: 561–577.
- Philippi RA, Philippi F (1864) Beschreibung einiger neuen Chilenischen Kafer. Stettiner Entomologische Zeitung 25: 313–406.
- Rafinesque CS (1815) Analyse de la nature ou tableau de l'univers et des corps organisés. Palermo, 224 pp. <https://doi.org/10.5962/bhl.title.106607>



- Redtenbacher L (1845) Die Gattungen der deutschen Kaefer–Fauna nach der analytischen Methode bearbeitet, nebst einem kurz gefassten Leitfaden, zum Studium dieses Zweiges der Entomologie. C. Ueberreuter, Wien, 177 pp. [2 pls]
- Reid CAM (1990) Systematics of the Australian Cryptocephalinae (Coleoptera: Chrysomelidae). Australian National University, Canberra, 887 pp.
- Reid CAM (1991) The Australian species of Chlamisini (Coleoptera: Chrysomelidae). Journal of the Australian Entomological Society 30: 315–323. <https://doi.org/10.1111/j.1440-6055.1991.tb00445.x>
- Reid CAM (1995) A Cladistic analysis of subfamilial relationships in the Chrysomelidae *sensu lato* (Chrysomelidae). In: Pakaluk J, Slipinski SA (Eds) Biology, Phylogeny, and Classification of Coleoptera: Papers Celebrating the 80<sup>th</sup> Birthday of Roy A. Crowson. Muzeum i Instytut Zoologii PAN, Warsaw, 559–631.
- Reid CAM (2000) Spilopyrinae Chapuis: A new subfamily in the Chrysomelidae and its systematic placement (Coleoptera). Invertebrate Taxonomy 14(6): 837–862. <https://doi.org/10.1071/IT00042>
- Reid CAM (2016) Australopapuan leaf beetle diversity: the contributions of hosts plants and geography. Austral Entomology, n/a-n/a. <https://doi.org/10.1111/aen.12251>
- Rey C (1883) Revision des genres *Disopus*, *Pachybrachis*, et *Stylosomus*. Revue d'Entomologie, II, 257–326.
- Riley EG, Clark SM, Flowers RW, Gilbert AJ (2002) Chrysomelidae Latreille 1802. In: Arnett RH, Thomas MC, Skelley PE, Frank JH (Ed.) American Beetles. Vol. 2. CRC Press, Boca Raton, 617–691.
- Riley EG, Clark SM, Seeno TN (2003) Catalog of the leaf beetles of America north of Mexico (Coleoptera: Megalopodidae, Orsodacnidae and Chrysomelidae, excluding Bruchinae). Coleopterists Society Special Publication 1, Sacramento, 290 pp.
- Röding PF (1798) Museum Boltenianum sive catalogus cimeliorum e tribus regnis naturae quae olim collegerat Joa. Fried Bolten, M. D. p. d. per XL. annos proto physicus Hamburgensis. Pars secunda continens conchylia sive testacea univalvia, bivalvia & multivalvia, Hamburg, 1–199.
- Roig-Juñent S (2004) Clytrinae part. In: Logarzo HA, Braun K, Di Iorio OR (Eds) Catálogo de insectos fitófagos de la Argentina y sus plantas asociadas. Sociedad Entomológica Argentina ediciones, Buenos Aires. 104–106.
- Sahlberg CR (1823) Periculum entomographicum, Species Insectorum, nondum descriptas proponeus. Aboae, 1–82.
- Saunders WW (1842) Descriptions of two new coleopterous genera allies to *Cryptocephalus*, from New Holland. Annals and magazine of natural history 1(10): 68–70.
- Saunders WW (1843) Continuation of a memoir on the Chrysomelidae of New Holland, allied to *Cryptocephalus*. Annals and magazine of natural history 1(11): 59.
- Saunders WW (1845) Descriptions of the Chrysomelidae of Australia, allied to the genus *Cryptocephalus*. Transactions of the Entomological Society of London 4(2): 141–154. <https://doi.org/10.1111/j.1365-2311.1845.tb01349.x>
- Sassi D (2015) Two new species of genus *Metallactus* Suffrian, 1866 from Bolivia and Brazil (Coleoptera: Chrysomelidae: Cryptocephalinae). Acta Entomologica Musei Nationalis Pragae, 55(2): 703–712.

- Schaeffer C (1933) Short studies in the Chrysomelidae (Coleoptera). *Journal of the New York Entomological Society* 41: 297–325.
- Schöller M (2002) Taxonomy of *Cryptocephalus* Geoffroy - what do we know? *Mitteilungen internationaler entomologischer Verein*, 27(1/2): 59–76.
- Schöller M (2003) A new species of *Metallactus* Suffrian, 1866 (Coleoptera: Chrysomelidae: Cryptocephalinae) from Brazil. *Russian Entomological Journal* 12: 71–74.
- Schöller M (2008) Comparative morphology of sclerites used by Camptosomatan leaf beetles for formation of the extrachorion (Chrysomelidae: Cryptocephalinae, Lamprosomatinae). In: Jolivet P, Santiago-Blay JA, Schmitt M (Eds) *Research on Chrysomelidae, Volume 1*. Brill, Leiden, 87–120.
- Schöller M, Heinig U (2003) Stalked eggs in a Cryptocephaline leaf beetle. *Chysomela* 42, 9.
- Seeno TN, Wilcox JA (1982) Leaf Beetle Genera (Coleoptera: Chrysomelidae). *Entomography* 1: 1–221.
- Sekerka L (2017) Lamprosomatinae in Catálogo Taxonômico da Fauna do Brasil. PNUD. <http://fauna.jbrj.gov.br/fauna/faunadobrasil/164747> [Access on: 06 Feb. 2017]
- Sekerka L, Chamorro ML, Agrain F, Regalin R (2015) Cryptocephalinae in Catálogo Taxonômico da Fauna do Brasil. PNUD. <http://fauna.jbrj.gov.br/fauna/faunadobrasil/164747> [Access on: 06 Feb. 2017]
- Staines CL (1995) Francisco de Asis Monrós: A perspective. *Proceedings of the Entomological Society of Washington* 97: 856–865.
- Stål C (1857) Til Kannedomen af Phytophaga. Öfversigt Af Kongelige Vetenskaps-Akademiens Förhandlingar, Stockholm 14: 53–63.
- Suffrian CWLE (1852) Zur Kenntniss der nordamerikanishcen Cryptocephalen. *Linnaea Entomologica* 7: 1–238.
- Suffrian CWLE (1857) Zur Kenntniss der Afrikanischen Cryptocephalen. *Linnaea Entomologica* 11: 57–260.
- Suffrian CWLE (1863) Zur Kenntniss der siidamerikanischen Cryptocephalen. *Linnaea entomologica* 15: 77–342.
- Suffrian CWLE (1866) Zur Kenntniss der sudamerikanischen Cryptocephalen. *Linnaea Entomologica* 16: 1–483.
- Viana MJ, Williner GJ (1972) Evaluación de la fauna entomológica y aracnológica de las provincias cuyanas y centrales de la República Argentina (Primera comunicación). *Acta Científica, Serie Entomología* 5: 1–29.
- Viana MJ, Williner GJ (1973) Evaluación de la fauna entomológica y aracnológica de las provincias cuyanas y centrales de la República Argentina (Segunda comunicación). *Acta Científica, Serie Entomología* 7: 1–30.
- Viana MJ, Williner GJ (1974) Evaluación de la fauna entomológica y aracnológica de las provincias cuyanas y centrales de la República Argentina (Tercera comunicación). *Acta Científica, Serie Entomología* 9: 1–35.
- Voet JE (1806) *Catalogus systematicus coleopterorum*, vol. 2. La Haye, 82 pp.
- Ward CR, O'Brien CW, O'Brien LB, Foster DE, Huddleston EW (1977) Annotated checklist of New World insects associated with *Prosopis* (mesquite). United States Department of Agriculture, Research Services Bulletin 1557.

- Watts JR (2005) A new genus and species of cryptocephaline leaf beetle (Coleoptera: Chrysomelidae) from Costa Rica. *Insecta Mundi* 9(3): 139–142.
- Weise J (1921) Wissenschaftliche Ergebnisse der schwedischen Entomologischen Reise des Herrn Dr. A. Roman in Amazonas. *Arkiv für zoologi* 14: 11–205.
- White RE (1968) A review of the genus *Cryptocephalus* in America north of Mexico (Chrysomelidae: Coleoptera). Smithsonian Institution Press, Washington, D.C., 124 pp.