

Genetic Diversity Among Viruses Associated with Sugarcane Mosaic Disease in Tucumán, Argentina

M. F. Perera, M. P. Filippone, C. J. Ramallo, M. I. Cuenya, M. L. García, L. D. Ploper, and A. P. Castagnaro

First, second, and seventh authors: Sección Biotecnología de la Estación Experimental Agroindustrial Obispo Colombres (EEAOC)–Unidad Asociada al Instituto Superior de Investigaciones Biológicas (INSIBIO; CONICET-UNT), Av. William Cross 3150, C.P. T4101XAC, Las Talitas, Tucumán, Argentina; third and sixth authors: Sección Fitopatología, EEAOC, Las Talitas, Tucumán, Argentina; fourth author: Subprograma Mejoramiento Genético de la Caña de Azúcar, EEAOC, Las Talitas, Tucumán, Argentina; and fifth author: Instituto de Bioquímica y Biología Molecular, UNLP, CCT-La Plata, CONICET, Facultad de Ciencias Exactas, Universidad Nacional de La Plata, Calles 47 y 115, C.P. 1900, La Plata, Buenos Aires, Argentina.

Accepted for publication 18 September 2008.

ABSTRACT

Perera, M. F., Filippone, M. P., Ramallo, C. J., Cuenya, M. I., García, M. L., Ploper, L. D., and Castagnaro, A. P. 2009. Genetic diversity among viruses associated with sugarcane mosaic disease in Tucumán, Argentina. *Phytopathology* 99:38–49.

Sugarcane leaves with mosaic symptoms were collected in 2006–07 in Tucumán (Argentina) and analyzed by reverse-transcriptase polymerase chain reaction (RT-PCR) restriction fragment length polymorphism (RFLP) and sequencing of a fragment of the *Sugarcane mosaic virus* (SCMV) and *Sorghum mosaic virus* (SrMV) coat protein (CP) genes. SCMV was detected in 96.6% of samples, with 41% showing the RFLP profile consistent with strain E. The remaining samples produced eight different profiles that did not match other known strains. SCMV distribution seemed to be more related to sugarcane genotype than to geo-

graphical origin, and sequence analyses of CP genes showed a greater genetic diversity compared with other studies. SrMV was detected in 63.2% of samples and most of these were also infected by SCMV, indicating that, unlike other countries and other Argentinean provinces, where high levels of co-infection are infrequent, co-existence is common in Tucumán. RFLP analysis showed the presence of SrMV strains M (68%) and I (14%), while co-infection between M and H strains was present in 18% of samples. Other SCMV subgroup members and the *Sugarcane streak mosaic virus* (SCSMV) were not detected. Our results also showed that sequencing is currently the only reliable method to assess SCMV and SrMV genetic diversity, because RT-PCR-RFLP may not be sufficiently discriminating.

Additional keywords: coat protein gene, *Potyviridae*.

Sugarcane mosaic, one of the most important viral diseases of sugarcane, is widely distributed in the world (24) and its economic significance varies among regions. Although not a major problem in some countries, sugarcane mosaic has caused substantial yield losses in other countries due to severe outbreaks. Economic losses depend on varietal susceptibility, virus strain, its interaction with other diseases, vector population, and environmental conditions (17). In the mid-1920s, a disease epidemic threatened the sugar industry in Argentina, Brazil, and Louisiana (United States) (24). The only effective way to control sugarcane mosaic has been the use of resistant cultivars (36). This requires a complete understanding of the genetic diversity of the pathogens as well as the interaction with cultivar, because resistance breakdown can occur when new strains or viruses appear (20). In addition, careful planning of crop management practices, including time of planting and harvesting, are used for disease control. Breeding for resistance has proven to be difficult due to the complexity of the sugarcane genome (22). As a consequence, susceptibility to *Sugarcane mosaic virus* (SCMV) still limits the cultivation of several elite sugarcane cultivars (25).

Numerous strains of SCMV and *Sorghum mosaic virus* (SrMV) are commonly associated with mosaic symptoms. Both viruses are members of the SCMV subgroup in the genus *Potyvirus* of the family *Potyviridae*. This family is the largest and economically most important group of plant viruses, with *Potyvirus* being its

most significant genus (6). Four other viruses—*Maize dwarf mosaic virus* (MDMV), *Johnsongrass mosaic virus* (JGMV), *Pennisetum mosaic virus* (PenMV), and *Zea mosaic virus* (ZeMV)—are also included in the SCMV subgroup although they have never been isolated from sugarcane (8). Another virus, *Sugarcane streak mosaic virus* (SCSMV), was recently identified (21) and is the major cause of mosaic symptoms in commercial sugarcane cultivars in several Asian countries (8). This virus could belong to an undescribed new genus within the *Potyviridae* family (1,23) and can infect sugarcane simultaneously with SCMV (8).

Serological-based assays (24) and reverse-transcriptase polymerase chain reaction (RT-PCR) protocols (34) are currently available to identify SCMV and SrMV. Before 1997, however, the only reported method of distinguishing among different SCMV and SrMV strains was to inoculate differential hosts with sap extracted from infected plants and observe if the plants developed characteristic symptoms of the different virus strains. The strains differ in their host range, ability to cause infection, and severity. However, the use of host differentials is time consuming and labor intensive and, more importantly, it does not reveal the range of viral diversity. In 1997, Yang and Mirkov (38) were the first to report the development of an RT-PCR-based restriction fragment length polymorphism (RFLP) analysis protocol to distinguish between SCMV and SrMV as well as between strains within each virus. A pair of RT-PCR primers that amplified a fragment of the coat protein (CP) gene was used to detect SCMV and a second pair to detect SrMV. The N-terminal part of the CP is the most variable region and contains the major virus-specific antigenic determinants, whereas the core protein is highly conserved among various *Potyvirus* spp. (31,33). The RT-PCR products were then

Corresponding author: A. P. Castagnaro; E-mail address: atilio@eeaoc.org.ar

doi:10.1094/PHTO-99-1-0038

© 2009 The American Phytopathological Society

subjected to an RFLP analysis to differentiate individual strains. The availability of the RT-PCR-based RFLP protocol provided a practical and efficient method to identify virus strains causing mosaic.

In Argentina, the sugarcane industry began in the province of Tucumán 190 years ago and, since then, different mosaic symptoms have been described in infected plants. The causal agent was first identified by Bennet (5) in 1941 as SCMV strain B. Two additional SCMV strains, A and F, and SrMV strain I, were detected in 1981 by biological assays (29). This strain identification, based on symptom expression and serological methods, has proven to be inconsistent and unreliable. In 2005, the predominance of SCMV strain E in Tucumán was determined by RT-PCR-RFLP (13). More recently, using the same methodology, we obtained new RFLP profiles, indicating that potential new strains were present (27). Viral strain identification at the genomic level would provide valuable information for the development of appropriate *in vitro* diagnostic tests as well as for determining mechanisms for increased disease resistance (17).

The objective of this study was to continue the characterization of the viruses associated with sugarcane mosaic in northwestern Argentina, particularly in Tucumán, and to analyze their genetic diversity. The present study reveals that new SCMV and SrMV genotypes are prevalent in our region in association with mosaic disease and their genetic variability could be detected only through DNA sequence comparisons. Also, a high frequency of co-infection by both viruses was found only in Tucumán province.

MATERIALS AND METHODS

Samples. Seventy-six leaf samples from sugarcane showing severe (red leaf) and common mosaic symptoms were collected in the 2006–07 growing season from 37 sugarcane genotypes at seven locations in Tucumán, Argentina, where the local breeding program is conducted. Only one field was sampled at each location. Most leaf samples were taken from advanced breeding lines at the final testing stage before release to the sugar industry and the remainder sampled from commercial cultivars. All fields had been grown using standard agronomic practices. Genotypes that showed mosaic symptoms differed between locations; most genotypes were present at a single location, whereas only a few genotypes were present at several locations. In addition, 11 symptomatic samples from 10 sugarcane genotypes were collected in the provinces of Salta and Jujuy, Argentina, considered to be a different geographical and agroecological group (Table 1). Two leaves per sample were stored at -70°C until extraction of the total plant RNA.

Extraction of total plant RNA. Frozen lamina tissue expressing mosaic symptoms (≈ 200 mg) was placed in liquid nitrogen and ground in a mortar. Total RNA was extracted using the protocol described by Aljanabi et al. (4). The contaminant DNA was eliminated by DNase treatment.

RT-PCR to detect SCMV and SrMV. RT-PCR was performed as described by Yang and Mirkov (38) and Alegria et al. (3). First-strand cDNA was synthesized using the Maloney-Murine leukemia virus reverse transcriptase (M-MLV) (Promega Corp., Madison, WI) as recommended by the manufacturer, with the reverse primers as the initial primer. The virus-specific primers SCMVF3 (5'-TTTYACCAAGCTGGAA-3'; Y = C or T) (38) or SCMVF4 (5'-GTTTTYACCAAGCTGGAACAGTC-3'; Y = C or T) (3) /SCMVR3 (5'-AGCTGTGTCTCTCTGTATTCTC-3') (38) and SrMVF3 (5'-AAGCAACAGACAAGCAC-3') /SrMVR3 (5'-TGACTCTCACCGACATTCC-3') (38) were used to detect SCMV and SrMV, respectively, in the PCR assay. The PCR reaction mix (40- μl final volume) consisted of 7.5 μl of cDNA, 250 ng of each primer, 1 \times PCR buffer (Promega Corp.), 1.5 mM MgCl_2 (Promega Corp.), 100 μM dNTPs (Amersham Biosciences, Piscataway, NJ), 0.6 units of *Taq* DNA polymerase

(Promega Corp.), and diethylpyrocarbonate (DEPC) water (USB Corp., Cleveland, OH) to final volume. PCR cycling parameters for SCMV using SCMVF4 and SCMVR3 primers were 1 cycle at 94°C (15 min); 35 cycles at 94°C (1 min), 60°C (1 min), and 72°C (1 min); and a final cycle at 72°C for 5 min. For SrMV using SrMVF3 and SrMVR3 primers and for SrMV, the cycle parameters were 1 cycle at 94°C (15 min); 35 cycles at 94°C (1 min), 52°C (1 min), and 72°C (2 min); and a final cycle at 72°C for 7 min. Upon completion, 5 μl of the RT-PCR sample was mixed with 1 μl of 6 \times gel loading buffer and electrophoresed in a 1.5% agarose gel. After electrophoresis, the gel was stained with ethidium bromide and visualized with UV light. The size of the fragment amplified from leaves infected with SCMV was ≈ 900 bp and that from leaves infected with SrMV was ≈ 870 bp.

RFLPs. Once the virus identities were determined using RT-PCR, RFLP was performed to determine the virus strain according to the protocol of Yang and Mirkov (38). The CP genes amplified by RT-PCR contain different restriction sites that can be used to differentiate strains (38). The PCR-amplified products were precipitated from the reaction mix by the addition of 1/10 volume of 3 M sodium acetate, pH 5.2, and 2.5 volumes of 100% ethanol. The pellets were washed twice with 70% ethanol and dissolved in 10 μl of distilled water. The PCR products generated from SCMV were digested with restriction enzymes *TaqI* (T/CGA) (Promega Corp.) at 65°C for 2 h and *HinI* (G/ANTC) (Promega Corp.) at 37°C for 2 h and those from SrMV were digested with *HgaI* (GACGCNNNNN/) (Promega Corp.) at 37°C for 2 h. The digestion reactions were carried out in a final volume of 15 μl , using 0.3 units/ μl of enzyme. The digestion products were analyzed on a 1.8% agarose gel stained with ethidium bromide.

Cloning and sequencing of the RT-PCR product from SCMV and SrMV isolates. The RT-PCR products belonging to the different RFLP profiles of SCMV and SrMV were gel purified using the QIAquick Gel Extraction Kit (Qiagen Inc., Chatsworth, CA), cloned into the pGEM-T Easy vector (Promega Corp.) following the manufacturer's protocol, and transformed into *Escherichia coli* DH5 α cells. Recombinant pGEM-T Easy clones were chosen based on *EcoRI* (G/AATTC) (Promega Corp.) restriction analysis. Forty-seven clones were sequenced on an automated DNA Sequencer (Abi 3130xl Genetic Analyzer, Hitachi) using SP6 (5'-CATACGATTTAGGTGACACTATAG-3') and T7 (5'-TAATACGACTCACTATAGGG-3') primers. Nucleotide sequences obtained in both directions were used to create the complete sequence of SCMV and SrMV CP genes. The restriction analysis and the determination of nucleotide identity were conducted using the DNAMAN software (Lynnon BioSoft, Vaudreuil, Quebec, Canada). The regions (amplicon without primer sequences) of 852 and 834 bp for SCMV and SrMV, respectively, from the CP encoding region were aligned and their phylogeny determined by ClustalX (35) using the neighbor-joining option with a bootstrap analysis of 1,000 random replications. Sequences from GenBank were also included in the analysis.

RT-PCR and restriction analysis to differentiate members of the SCMV subgroup. RT-PCR was performed according to the protocol described by Marie-Jeanne et al. (26) with modifications. First-strand cDNA was synthesized using the M-MLV (Promega Corp.) following the manufacturer's protocol, with the reverse primer as the initial primer. The virus-specific primers Oligo1n (5'-ATGGTHTGGTGYATHGARAAYGG-3'; H = A, C or T; Y = C or T; R = A or G) and Oligo2n (5'-TGCTGCKGCYTTTCATYTG-3'; Y = C or T; K = G or T) were used to detect members of the SCMV subgroup in the PCR assay. The PCR reaction mix (40- μl final volume) consisted of 7.5 μl of cDNA, 300 ng of each primer, 1 \times PCR buffer (Promega Corp.), 1.25 mM MgCl_2 (Promega Corp.), 50 μM dNTPs (Amersham Biosciences), 0.6 units of *Taq* DNA polymerase (Promega Corp.), and DEPC water (USB Corp.) to final volume. PCR cycling parameters were 1 cycle at 94°C (5 min), 50°C (2 min), and 72°C

(50 s); 1 cycle at 94°C (2 min), 50°C (2 min), and 72°C (50 s); 30 cycles at 94°C (45 s), 50°C (2 min), and 72°C (50 s); and a final cycle at 72°C for 10 min. The reaction mixture (5 µl) was analyzed on 1.5% agarose gel stained with ethidium bromide. The size of the fragment amplified from leaves infected with members of the SCMV subgroup was 327 bp. The PCR-amplified products were precipitated from the reaction mix by the addition of 1/10 volume of 3 M sodium acetate, pH 5.2, and 2.5 volumes of 100% ethanol. The pellets were washed twice with 70% ethanol and dissolved in 10 µl of distilled water. They were then digested with restriction enzymes *AluI* (AG/CT) (Promega Corp.) and *DdeI* (C/TNAG) (Promega Corp.) at 37°C for 2 h. The digestion reactions were carried out in a final volume of 15 µl using 0.3 units/µl

of enzyme. The digestion products were analyzed on a 1.8% agarose gel stained with ethidium bromide.

RT-PCR to detect SCSMV. RT-PCR was performed according to the protocol of Chatenet et al. (8) with modifications. First-strand cDNA was synthesized using the M-MLV (Promega Corp.) according to the manufacturer's instructions, with the reverse primer as the initial primer. The virus-specific primers ST2 and ST5 (unpublished sequences; generously supplied by P. Rott, CIRAD, Montpellier, France) were used to detect SCSMV in the PCR assay. The PCR reaction mix (20-µl final volume) consisted of 7.5 µl of cDNA, 250 ng of each primer, 1× PCR buffer (Promega Corp.), 1.5 mM MgCl₂ (Promega Corp.), 200 µM dNTPs (Amersham Biosciences), 0.6 units of Taq DNA polymerase

TABLE 1. Viruses associated with sugarcane mosaic symptoms in leaves of diverse sugarcane genotypes sampled from various locations in northwestern Argentina

Location, genotype ^a	Symptoms ^b	Date of field sampling	Virus detection by RT-PCR ^c			
			SCMV ^d	SrMV ^e	SCSMV ^f	Subgroup ^g
Tucumán(*)						
Mercedes						
CP 65-357	Common	4 January 2006	+	+	-	+
CP 65-357	Common	4 January 2006	+	+	-	+
TUC 93-89	Severe	4 January 2006	+	+	-	+
TUC 94-12	Common	4 January 2006	-	+	-	+
TUC 95-17	Severe	4 January 2006	+	+	-	+
TUC 95-17	Severe	4 January 2006	+	+	-	+
TUC 95-18	Severe	4 January 2006	+	+	-	+
TUC 96-43	Severe	4 January 2006	+	+	-	+
TUC 96-43	Severe	4 January 2006	+	-	-	+
TUC 97-4	Severe	4 January 2006	+	+	-	+
TUC 97-19	Common	4 January 2006	+	+	-	+
Palá-Palá						
CP 65-357	Common	4 January 2006	+	+	-	+
TUC 93-104	Common	4 January 2006	-	+	-	+
TUC 95-17	Common	4 January 2006	+	+	-	+
TUC 97-21	Common	4 January 2006	+	+	-	+
Fronterita						
CP 65-357	Common	4 January 2006	+	+	-	+
TUC 95-17	Severe	4 January 2006	+	+	-	+
Los Córdoba						
CP 65-357	Common	5 January 2006	+	+	-	+
CP 65-357	Common	5 January 2006	+	+	-	+
TUC 93-58	Common	5 January 2006	+	+	-	+
TUC 93-58	Severe	5 January 2006	+	-	-	+
TUC 93-89	Common	5 January 2006	+	+	-	+
TUC 93-104	Common	5 January 2006	+	+	-	+
TUC 95-17	Common	5 January 2006	+	+	-	+
TUC 95-17	Common	5 January 2006	+	-	-	+
TUC 95-18	Severe	5 January 2006	+	+	-	+
TUC 95-59	Common	5 January 2006	+	+	-	+
TUC 96-24	Common	5 January 2006	+	+	-	+
TUC 97-4	Common	5 January 2006	+	+	-	+
Yaquilo						
CP 65-357	Common	5 January 2006	+	+	-	+
TUC 93-89	Common	5 January 2006	+	+	-	+
TUC 95-17	Common	5 January 2006	+	+	-	+
TUC 96-24	Common	5 January 2006	+	+	-	+
TUC 97-8	Common	5 January 2006	+	+	-	+
TUC 97-8	Severe	5 January 2006	+	-	-	+
Santa Ana						
CP 65-357	Common	19 January 2006	+	+	-	+

(continued on next page)

^a Province, location, and sugarcane genotypes introduced or developed by Sugarcane Breeding Program at Estacion Experimental Agroindustrial Colombres (EEAOC, *) and at Chacra Experimental Colonia Santa Rosa (**). Local genotype identities are assigned by each program. The genotypes from Salta and Jujuy provinces were considered as a different geographical and agroecological group.

^b Symptom classification is done based on visual foliar ratings. Common symptoms include contrasting shades of green, often islands of normal green on a background of paler green or yellowish areas. Severe symptoms include extensive yellowing and, eventually, reddish flecks, streaks and spots along the leaves.

^c Virus detection by reverse-transcriptase polymerase chain reaction (RT-PCR) is indicated by the presence (+) or absence (-) of an expected fragment for each virus.

^d *Sugarcane mosaic virus* (SCMV). Expected fragment: 900 bp (3).

^e *Sorghum mosaic virus* (SrMV). Expected fragment: 870 bp (38).

^f *Sugarcane streak mosaic virus* (SCSMV). Expected fragment: 400 bp (8).

^g SCMV subgroup. Expected fragment: 327 bp (26).

expressing the red-leaf symptoms (severe mosaic) compared with those showing mosaic symptoms only (common mosaic) (data not shown). The modification introduced to the protocol of Yang and Mirkov (38) by Alegria et al. (3) enhanced the detection of SCMV in our samples, because more positive samples were detected with this new protocol (96.6%) than with the former one (81.6%).

RFLP analysis. The differentiation of virus strain was performed as previously described (38). We found nine different RFLP profiles produced by the *TaqI* and *HinfI* digestions for

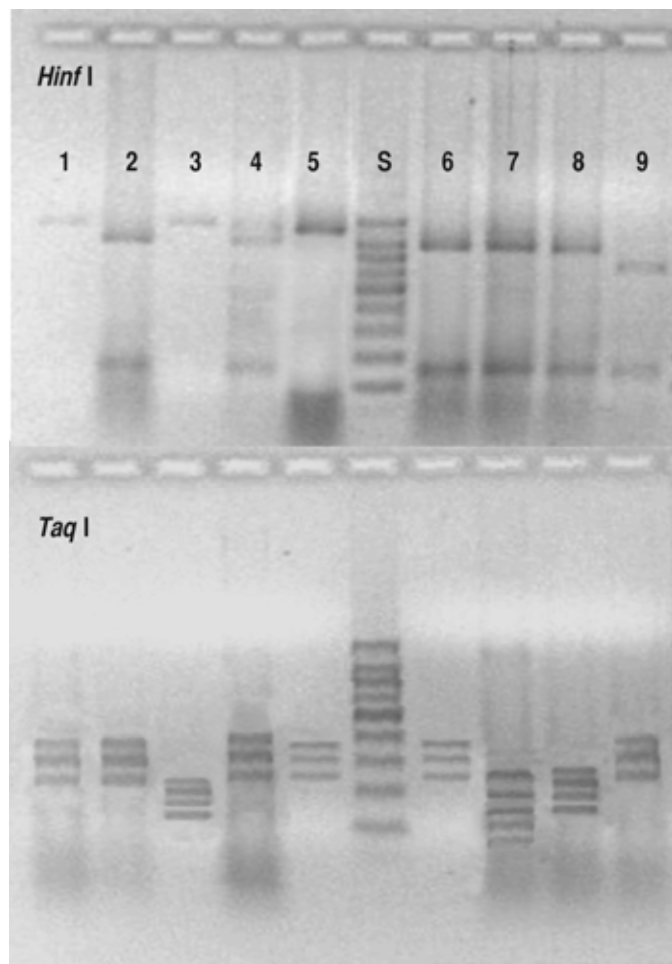


Fig. 1. Restriction fragment length polymorphisms (RFLPs) of reverse-transcriptase polymerase chain reaction products from *Sugarcane mosaic virus* strains with *HinfI* (top) and *TaqI* (bottom) digests. Lanes 1 to 9: the nine different RFLP profiles obtained. S = molecular weight markers (100 Marker-Promega; top to bottom: 1,000, 900, 800, 700, 600, 500, 400, 300, 200, and 100 bp).

SCMV. The nine profiles (Fig. 1), the percentage of occurrence, and the size in nucleotides of the fragments generated (Table 2) are shown. RFLP profiles of 41% of the SCMV-positive samples coincided with strain E (profile 2), whereas the other eight profiles showed complex patterns of polymorphisms that did not totally match with other known strains of SCMV. The RFLP analyses of the SrMV-specific PCR products with *HgaI* indicated the existence of three known SrMV strains: H, I, and M (Fig. 2). We found strains M and I in 68 and 14% of the samples, respectively, whereas strain H was found in association with strain M in only 18% of the samples. Nevertheless, no association between the kind of RFLP profiles of SCMV and SrMV was detected, indicating that there was no relationship between the SCMV and SrMV strains found in co-infected samples.

Analysis of the CP gene sequences. To investigate the viral genetic diversity, the RT-PCR fragments belonging to each RFLP profile were purified, cloned into a vector, and sequenced. The SCMV isolates were named with a number equivalent to the nine RFLP profiles and a letter corresponding to the different isolates belonging to each profile. The SrMV isolates were designated with a letter corresponding to the three RFLP profiles (M, H, and I) (Fig. 2) and a number corresponding to the different isolates belonging to each profile. The GenBank accession numbers of each sequence are shown in Table 3. The CP-encoding region was aligned and differences were found through the entire sequence of

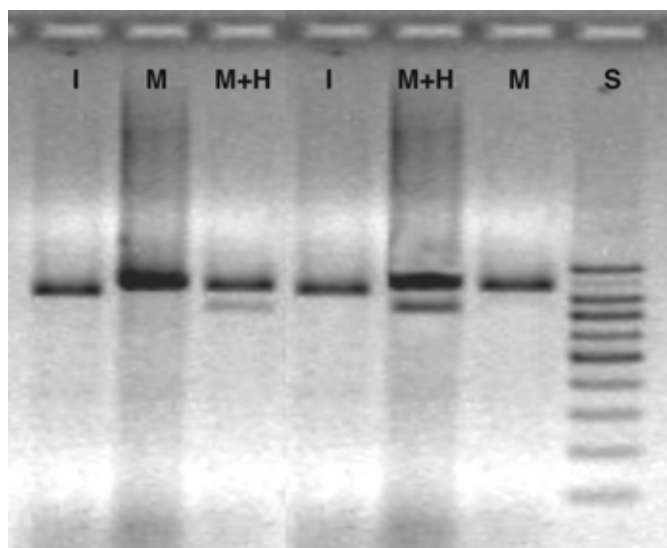


Fig. 2. Restriction fragment length polymorphisms (RFLPs) of reverse-transcriptase polymerase chain reaction products from *Sorghum mosaic virus* strains with *HgaI* digests. I, M, and H = SrMV strains; S = molecular weight markers (100 Marker-Promega; top to bottom: 1,000, 900, 800, 700, 600, 500, 400, 300, 200, and 100 bp).

TABLE 2. Incidence of each *Sugarcane mosaic virus* profile and size of restriction fragments obtained after digestion by *HinfI* and *TaqI* of the product amplified by reverse-transcriptase polymerase chain reaction

RFLP ^a	Incidence (%)	Fragment size (bp)																
		<i>HinfI</i>							<i>TaqI</i>									
		128	142	330	428	630	758	900	24	81	153	159	208	240	275	312	324	361
1	43.80	X	X	X	X	X
2	41.00	...	X	X	X	X	X	X
3	5.50	X	X	...	X	...	X	X	X
4	2.70	...	X	X	X	X	X	X	X
5	1.40	X	X	X	...	X	X	...
6	1.40	...	X	X	X	X	...	X	X	...
7	1.40	...	X	X	X	X	X	X	X	...	X
8	1.40	...	X	X	X	...	X	...	X	X	X
9	1.40	X	X	X	X	X	X	X

^a Restriction fragment length polymorphism profile.

SCMV and SrMV. No gaps were detected within each group of sequences (Figs. 3 and 4).

The cloned fragments of SCMV contained 900 nucleotides (nt) and encoded 300 amino acids (aa); for SrMV, they contained 871 nt and encoded 290 aa. The nucleotide sequence identity ranged from 95.89 to 99.88% within the SCMV group (data not shown). When pairwise comparisons of the nucleotide sequences were performed, all the SCMV sequences, even those classified as SCMV strain E (profile 2), had a higher nucleotide identity with SCMV strain E (95.66 to 97.07%) than with the other strains (A, B, and D) reported by Yang and Mirkov (38). However, our sequences shared the highest identity with Australian strains AF006735 and AF278405 (96.60 to 97.89% and 99.00 to 99.90%, respectively) (Table 4). Within the SrMV group, the nucleotide sequence identity ranged from 97.36 to 99.88% (data not shown).

When pairwise comparisons were performed, the sequences of the SrMV strains predicted as H, M, and I by RFLP analysis did not yield the highest expected nucleotide identity with the sequences of the corresponding strains reported by Yang and Mirkov (38) (Table 5).

Phylogenetic analysis. The phylogenetic tree was constructed based on the nucleotide sequence alignment of the core region of the CP gene from the 35 SCMV and 12 SrMV different sequences obtained. Nine sequences of the CP gene from known viruses (obtained from GenBank) were included for comparisons (Fig. 5). As expected, the SCMV and SrMV isolates were clustered in independent branches. No correlation was observed between the SCMV groups and the geographical origin of the SCMV isolates. Nevertheless, the isolates from Salta (1.N, 1.O, 2.E, 8.A, 8.B, and 9.A) and Jujuy (4.A and 4.B) belonged to different branches. A

TABLE 3. Description of 35 *Sugarcane mosaic virus* (SCMV) and 12 *Sorghum mosaic virus* (SrMV) isolates obtained from symptomatic sugarcane leaves sampled from various locations in northwestern Argentina

Virus, isolate ^a	Province (location)	Sugarcane genotype ^b	Genotype abbreviation ^c	GenBank accession no.
SCMV				
1.A	Tucumán (Fronterita)	CP 65-357	CP357	EU196421
1.B	Tucumán (Fronterita)	CP 65-357	CP357	EU196422
1.C	Tucumán (Fronterita)	CP 65-357	CP357	EU196423
1.D	Tucumán (Los Córdoba)	CP 65-357	CP357	EU196424
1.E	Tucumán (Los Córdoba)	CP 65-357	CP357	EU196425
1.F	Tucumán (Los Córdoba)	CP 65-357	CP357	EU196426
1.G	Tucumán (Santa Ana)	CP 65-357	CP357	EU196427
1.H	Tucumán (Mercedes)	TUC 93-89	T89	EU196428
1.I	Tucumán (Los Córdoba)	TUC 95-17	T17	EU196429
1.J	Tucumán (Los Córdoba)	TUC 95-17	T17	EU196430
1.K	Tucumán (Santa Ana)	TUC 95-59	T59	EU196431
1.L	Tucumán (Santa Ana)	TUC 95-59	T59	EU196432
1.M	Tucumán (Santa Ana)	TUC 95-59	T59	EU196433
1.N	Salta (Colonia Santa Rosa)	CO 419	C0419	EU196434
1.O	Salta (Colonia Santa Rosa)	CO 419	C0419	EU196435
2.A	Tucumán (Santa Ana)	TUC 94-58	T58	EU196436
2.B	Tucumán (Santa Ana)	TUC 94-58	T58	EU196437
2.C	Tucumán (Santa Ana)	TUC 94-58	T58	EU196439
2.D	Tucumán (Las Talitas)	RA 87-3	RA3	EU196440
2.E	Salta (Colonia Santa Rosa)	NA 89-104	NA104	EU196441
3.A	Tucumán (Mercedes)	TUC 95-17	T17	EU196442
3.B	Tucumán (Mercedes)	TUC 95-17	T17	EU196443
3.C	Tucumán (Mercedes)	TUC 95-17	T17	EU196444
3.D	Tucumán (Mercedes)	TUC 95-17	T17	EU196445
3.E	Tucumán (Los Córdoba)	TUC 95-17	T17	EU196446
4.A	Jujuy (Ledesma)	NA 84-3419	NA3419	EU196447
4.B	Jujuy (Ledesma)	NA 84-3419	NA3419	EU196448
5.A	Tucumán (Yaquilo)	CP 65-357	CP357	EU196449
6.A	Tucumán (Los Córdoba)	TUC 93-104	T104	EU196450
6.B	Tucumán (Los Córdoba)	TUC 93-104	T104	EU196451
7.A	Tucumán (Las Talitas)	RA 87-3	RA3	EU196452
7.B	Tucumán (Las Talitas)	RA 87-3	RA3	EU196453
8.A	Salta (Colonia Santa Rosa)	NA 90-244	NA244	EU196454
8.B	Salta (Colonia Santa Rosa)	NA 90-244	NA244	EU196455
9.A	Salta (Colonia Santa Rosa)	NA 87-661	NA661	EU196438
SrMV				
H.1	Tucumán (Mercedes)	TUC 94-12	T12	EU189035
H.2	Tucumán (Mercedes)	CP 65-357	CP357	EU189036
H.3	Tucumán (Mercedes)	CP 65-357	CP357	EU189037
M.1	Tucumán (Los Córdoba)	TUC 93-58	T58	EU189039
M.2	Tucumán (Santa Ana)	TUC 96-27	T27	EU189040
I.1	Tucumán (Yaquilo)	TUC 96-24	T24	EU189041
I.2	Tucumán (Yaquilo)	TUC 96-24	T24	EU189042
I.3	Tucumán (Yaquilo)	TUC 96-24	T24	EU189038
I.4	Tucumán (Palá Palá)	TUC 93-104	T104	EU189043
I.5	Tucumán (Palá Palá)	TUC 93-104	T104	EU189044
I.6	Tucumán (Palá Palá)	TUC 93-104	T104	EU189045
I.7	Tucumán (Santa Ana)	TUC 96-27	T27	EU189046

^a SCMV isolates were named with a number equivalent to the restriction fragment length polymorphism (RFLP) profiles (1 to 9) and a letter corresponding to the different isolates belonging to each profile. SrMV isolates were designated with a letter corresponding to the three RFLP profiles (M, H, and I) and a number corresponding to the different isolates belonging to each profile.

^b Local sugarcane genotype identities are assigned by the Sugarcane Breeding Program at Estación Experimental Agroindustrial Obispo Colombres and at Chacra Experimental Colonia Santa Rosa.

^c Genotype abbreviation used for isolate designation in phylogenetic analysis.

correlation between host genotype and the sequence of the SCMV CP gene has been reported (37), indicating that infected hosts may have exerted a selection pressure for virus evolution. We have found a weak correlation among viruses isolated from the same sugarcane genotypes, especially for SCMV (Fig. 5).

Detection of SCMV subgroup members and SCSMV. When the primer set Oligo1n and Oligo2n (26) was used to detect the members of the SCMV subgroup, an expected fragment of 327 bp

was amplified in all the samples (data not shown). The RFLP profile analysis allowed us to detect only SCMV and SrMV from the four original members of the subgroup (SCMV, SrMV, MDMV, and JGMV). We found two RFLP profiles for SCMV, one belonging to strain E (8.3% of the samples; fragment sizes with *AluI* = 6, 35, 50, 75, 79, and 82 bp and with *DdeI* = 34, 56, and 237 bp) and the other belonging either to strains B or D (91.7% of the samples; fragment sizes with *AluI* = 6, 35, 50, 82,

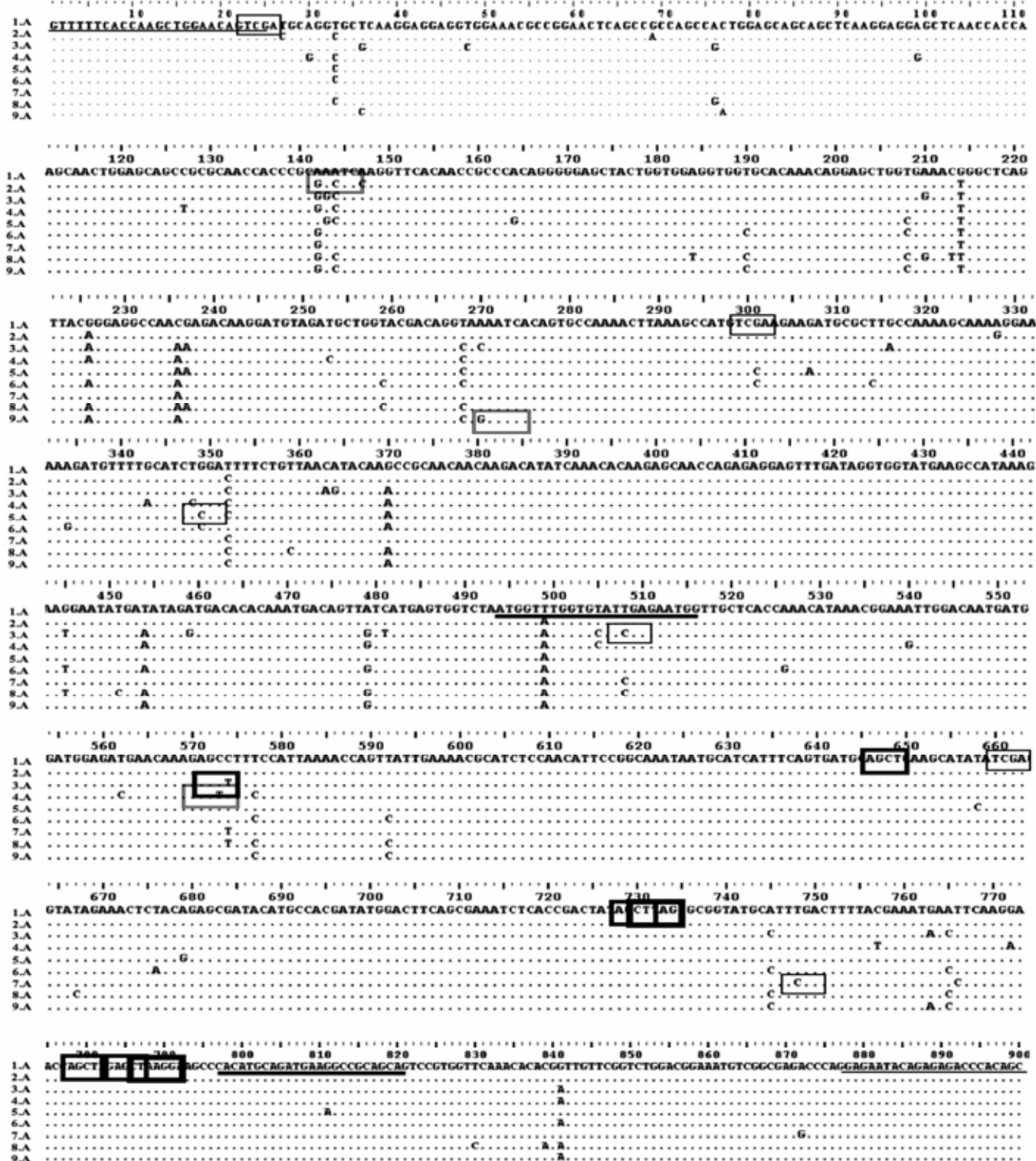


Fig. 3. Multiple alignment of nucleotide sequences of coat protein genes from one *Sugarcane mosaic virus* (SCMV) isolate of each of the nine restriction fragment length polymorphism profiles. The rectangles indicate cleavage sites of (thin line), *TaqI*; (double line), *HinfI*; (medium bold line), *AluI*; and (bold line), *DdeI*. Primer sequences are underlined: (thin line) = SCMVF4 and SCMVR3 and (medium bold line) = Oligo1n and Oligo2n.

and 154 bp and with *DdeI* = 34, 56, and 237 bp). The only RFLP profile found for SrMV may belong to strain M or I (fragment sizes with *AluI* = 35, 138, and 154 bp and with *DdeI* = 327 bp). Nevertheless, this strain classification for each virus, based on the theoretical profiles proposed by Marie-Jeanne et al. (26), did not coincide with those obtained when using the protocol of Yang and Mirkov (38). This may be because the protocol described by Marie-Jeanne et al. (26) was not designed to differentiate virus strains. In other words, it shows less genetic diversity than the Yang and Mirkov (38) technique.

None of the leaf samples produced an RT-PCR product when SCSMV-specific primers ST2 and ST5 were used (8) (data not shown).

DISCUSSION

Sugarcane mosaic has been reported in more than 70 countries and, because the published strains have been described from only a few of these countries (19), the number of existing SCMV and SrMV strains is expected to be much greater. Currently, the major reported genetic diversity of SCMV in sugarcane and maize has been found from sampling conducted in the United States, Germany, China, Australia, and four African countries (3). In Argentina, there are a few reports of viruses related to sugarcane mosaic. SCMV strain B was the pathogen first identified by biological assays (5). Forty years later, two additional SCMV strains (A and F) were found by a similar approach. SrMV strain I was also detected in sugarcane with mosaic symptoms (29). In 2005, the predominance of SCMV strain E in Tucumán was determined by an RT-PCR-based RFLP technique (13). Recently, using the same methodology, we were unable to assign all the

obtained RFLP profiles to known strains (27). In the present work, we found new SCMV and SrMV genotypes predominantly associated with mosaic disease in Argentina. Currently, other than SCMV strain E, the major strain identified by RT-PCR-based RFLPs in our region belongs to an unknown profile that did not match any known strains (Table 2). These changes in strain identity could be explained by changes in the sugarcane cultivars used in the region, as illustrated by the history of SCMV strains in Louisiana (20,24), where new strains appeared when new cultivars were grown. We found no correlation between SCMV isolates in Tucumán, Salta, and Jujuy and their geographical distribution. This may be due to the fact that different sugarcane genotypes were sampled in the three regions and, as Espejel et al. (12) and Gemechu et al. (15) have reported, SCMV distribution seems to be more related to host than to geographical origin. In fact, data obtained by Goodman (17) indicate clearly that no association exists between SCMV strain prevalence and specific cultivars or regions.

In Tucumán, the sugarcane breeding program was established 40 years ago and resistance to mosaic remains a major selection criterion. In order to obtain genetic variability in agronomical traits, this breeding program is constantly importing foreign germplasm, mainly from Louisiana, that, after quarantine, is incorporating into the crossing schedule. However, all SCMV sequences reported in this study had a higher nucleotide identity with isolates from Australia than those from the United States (Table 4). A similar situation has been reported by Gonçalves et al. in Brazil (16). In contrast, SrMV was detected only in samples from Tucumán, and their sequences had a higher nucleotide identity with U.S. isolates (Fig. 5; Table 5). These results indicate that sugarcane quarantine is effective at preventing the spread of

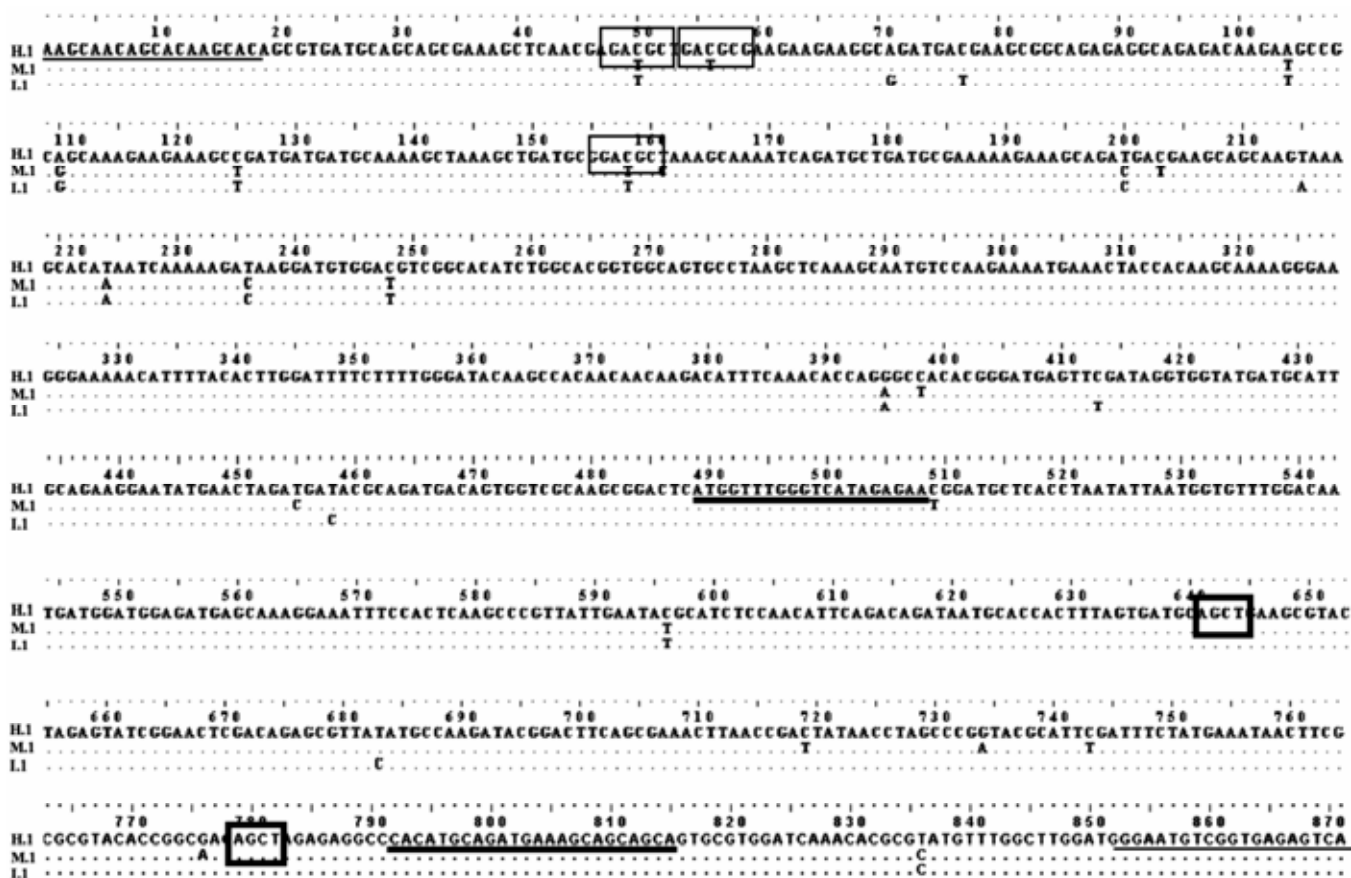


Fig. 4. Multiple alignment of nucleotide sequences of coat protein genes from one *Sorghum mosaic virus* (SrMV) isolate of each of the three restriction fragment length polymorphism profiles. The rectangles indicate cleavage sites of (thin line), *HgaI*, and (bold line), *AluI*. All the sequences do not have the cleavage site of *DdeI*. Primer sequences are underlined: (thin line) = SrMVf4 and SrMVR3 and (bold line) = Oligo1n and Oligo2n.

SCMV, because detection has been optimized and is routinely carried out (28). However, the SrMV diagnostic technique needs to be urgently implemented in order to avoid SrMV introduction, as seems to have happened in the past. The results also reinforce the importance of proper implementation of quarantine and diagnostic protocols for germplasm exchange to prevent the introduction of new pathogens or new strains into sugarcane-growing locations (11). Moreover, we found a greater genetic variability in our region compared with that determined by Handley et al. (22) for Australia, the United States, and South Africa, where similar values of variability among SCMV isolates were found. In addition, this genetic variability in the nucleotide sequences of SCMV (0.12 to 4.11%) and SrMV (0.12 to 2.64%) in sugarcane should be taken into consideration in the local breeding program for resistance to mosaic disease.

Koike and Gillaspie (24) suggested that mixtures of strains might become unstable, resulting in one strain becoming dominant. Joint infection by related viruses is unusual but does seem to occur in some vegetatively propagated crops (9). In this respect, although there have been many studies in which specific primers for SCMV and SrMV were used jointly, there has been only one report of the coexistence of both in sugarcane (10). In our work, we detected a high frequency of co-infection (68.4%) by SCMV and SrMV in Tucumán, whereas no co-infection was found in the other two provinces (Salta and Jujuy). The high co-infection in Tucumán may be the consequence of the use of different sugarcane genotypes, the effect of agroecological conditions, and/or the

incidence of vector populations compared with other sugarcane-growing areas in Argentina and the world.

In order to assess the range of viral genetic diversity, we did not restrict the sampling to commercially grown cultivars; instead, we

TABLE 5. Percentage of nucleotide identity among coat protein genes of the 12 *Sorghum mosaic virus* (SrMV) isolates and some sequences from the GenBank corresponding to strains M (U57360) H (U57358), and I (U57359)

Isolate ^a	SrMV strains ^b		
	H	M	I
H.1	97.60	97.12	97.96
H.2	97.60	97.36	98.20
H.3	97.72	97.48	98.32
M.1	98.08	97.60	97.72
M.2	98.08	97.60	97.72
I.1	98.44	98.44	98.80
I.2	98.56	98.56	98.92
I.3	98.56	98.08	98.20
I.4	98.32	98.32	98.68
I.5	98.68	98.20	98.32
I.6	98.56	98.08	98.20
I.7	98.32	97.60	97.96

^a SrMV isolates were designated with a letter corresponding to the three restriction fragment length polymorphism profiles (M, H, and I) and a number corresponding to the different isolates belonging to each profile.

^b Bold numbers represent the extreme values of nucleotide identity between the isolates and each sequence from the GenBank.

TABLE 4. Percentage of nucleotide identity among coat protein genes of the 35 *Sugarcane mosaic virus* (SCMV) isolates and some sequences from the GenBank corresponding to strains from the United States and isolates from Australia (AF006735 and AJ278405)

Isolate ^b	SCMV strains ^a					
	A	B	D	E	AF00 6735	AJ278 405
1.A	93.90	94.01	94.72	95.89	97.42	99.21
1.B	93.66	93.78	94.48	95.66	97.18	99.20
1.C	93.78	93.90	94.60	95.77	97.30	99.19
1.D	93.43	94.13	94.84	95.77	96.83	99.18
1.E	93.66	94.37	95.07	95.77	97.07	99.17
1.F	93.54	94.25	94.95	95.66	96.95	99.16
1.G	94.01	94.48	95.42	95.89	97.42	99.15
1.H	93.78	94.37	94.95	96.95	97.30	99.14
1.I	94.13	94.60	95.07	96.24	97.54	99.13
1.J	94.01	94.48	94.95	96.13	97.42	99.12
1.K	93.90	94.25	95.19	97.07	97.42	99.11
1.L	93.78	94.13	95.07	96.95	97.30	99.10
1.M	93.66	94.01	94.95	96.83	97.18	99.90
1.N	93.90	94.25	94.72	96.83	97.89	99.80
1.O	93.78	94.25	94.72	96.71	97.77	99.70
2.A	94.13	94.37	95.07	96.24	97.77	99.60
2.B	94.01	94.25	94.95	96.13	97.65	99.50
2.C	94.01	94.25	94.95	96.13	97.65	99.40
2.D	93.90	94.01	94.95	96.13	97.18	99.30
2.E	93.66	94.01	94.48	96.83	97.65	99.20
3.A	92.84	93.90	94.37	96.24	96.60	99.10
3.B	93.08	94.13	94.60	96.48	96.83	99.00
3.C	93.90	94.13	95.07	96.24	96.83	99.10
3.D	93.90	94.13	95.07	96.24	96.83	99.20
3.E	92.96	94.01	94.48	96.36	96.71	99.30
4.A	94.48	95.42	95.89	96.36	97.89	99.40
4.B	94.48	95.42	95.89	96.36	97.89	99.50
5.A	93.54	94.01	94.60	95.89	96.95	99.60
6.A	93.90	94.13	94.72	96.48	97.54	99.70
6.B	94.01	94.25	94.84	96.60	97.65	99.80
7.A	93.78	94.25	94.72	96.36	97.18	99.90
7.B	94.01	94.48	94.95	96.36	97.42	99.10
8.A	93.31	93.66	94.13	96.60	96.83	99.11
8.B	93.31	93.66	94.13	96.60	96.83	99.12
9.A	94.13	94.48	94.95	97.07	97.89	99.13

^a Strains from the United States: A = U57354, B = U57355, D = U57356, and E = U57357. Bold numbers represent the extreme values of nucleotide identity between the isolates and each sequence from the GenBank.

^b SCMV isolates were named with a number equivalent to the restriction fragment length polymorphism profiles (1 to 9) and a letter corresponding to the different isolates belonging to each profile.

collected samples from sugarcane-breeding field trials that included advanced promising cultivars of our breeding program. In Tucumán, the commercial cv. CP 65-357, released in 1989 and currently planted in 18% of the sugarcane production area (2), was infected by several virus genotypes (Table 3). This confirms

the high susceptibility to mosaic of this important cultivar, which was the most widely planted cultivar between 1994 and 2002, when it occupied 34% of the production area in Tucumán. Also, we found SrMV strain H in this cultivar by RT-PCR-based RFLPs, whereas Grisham et al. (20) reported that, in 2003 in

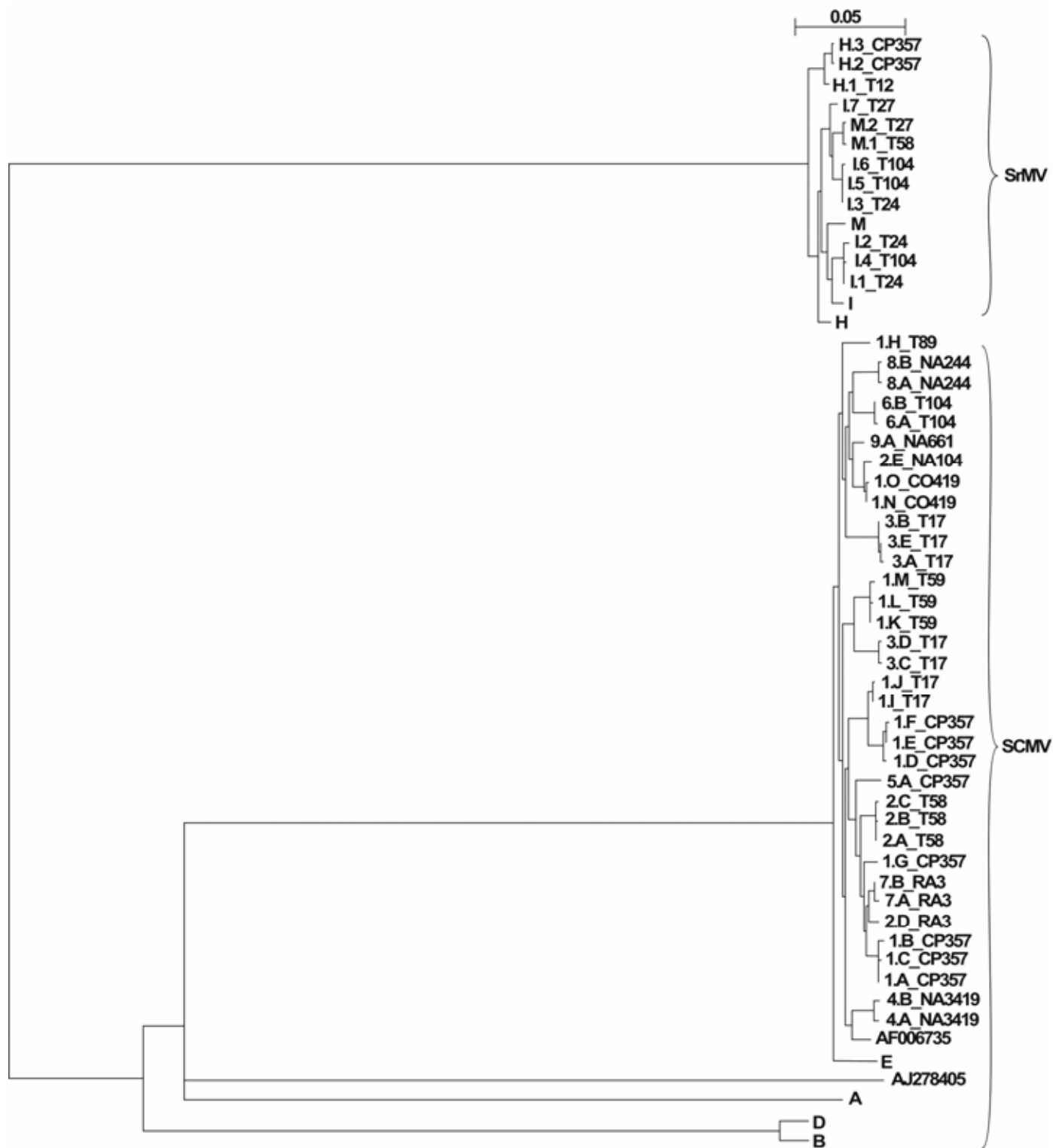


Fig. 5. Phylogenetic tree obtained with Clustal X from *Sugarcane mosaic virus* (SCMV) and *Sorghum mosaic virus* (SrMV) multiple alignment of the nucleotide sequence of the coat protein gene-amplified fragment. Abbreviations and accession number in the GenBank of known strain sequences: M (U57360), H (U57358), I (U57359), A (U57354), B (U57355), D (U57356), and E (U57357). SCMV isolates were named with a number equivalent to the restriction fragment length polymorphism (RFLP) profiles (1 to 9) and a letter corresponding to the different isolates belonging to each profile. SrMV isolates were designated with a letter corresponding to the three RFLP profiles (M, H, and I) and a number corresponding to the different isolates belonging to each profile. Local sugarcane genotype identities are assigned by the Sugarcane Breeding Program at Estación Experimental Agroindustrial Obispo Colombres and at Chacra Experimental Colonia Santa Rosa. Genotype abbreviations were used for the purpose of this phylogenetic analysis.

Louisiana, CP 65-357 was infected with SrMV strain I. This was in contrast to what had been found in earlier surveys, with SrMV strain H being the most commonly recorded one (20).

SCSMV, the major cause of mosaic symptoms in commercial sugarcane cultivars in several Asian countries (8), was not detected in the sugarcane leaves with mosaic symptoms in our region. However, this virus was recently found in a germplasm collection in Colombia (7), indicating the importance of establishing a standard diagnostic protocol for SCSMV detection in quarantine stages.

The characterization of symptoms produced on differential hosts is time consuming, and reliable studies require the use of a set of standard differential hosts and previously described viral strains. These conditions are rarely met (3). The RT-PCR-based RFLP method of CP genes proposed by Yang and Mirkov (38) should facilitate a rapid identification and discrimination of strains from unknown field isolates. The CP is the best characterized of all the gene products and consists of the highly variable, surface-exposed amino-(N)-terminus, a highly conserved core region, and a surface-exposed carboxyl-C-terminus (31). The N-terminus is the most significant region in the virus in that it is unique to each viral type and, thus, is the region where most strain variation occurs (18). In the present work, when RFLP analysis was performed on the RT-PCR products derived from the SCSMV-specific primer set, 59% of the samples produced banding patterns that did not match with those for known strains (Table 2). Consequently, a single mutation is sufficient for an isolate to lose a restriction site and hamper typing by this method (26). All the SCSMV sequences belonging to the nine RFLP profiles obtained (Table 2) have a higher nucleotide identity with SCSMV strain E than with any of the other strains reported by Yang and Mirkov (38). On the other hand, SrMV strains H and M and some of strain I predicted by RFLP analysis do not exhibit a higher nucleotide identity with the corresponding strain. Also, the protocol proposed by Marie-Jeanne et al. (26), used to detect SCSMV subgroup members, was inefficient in differentiating strains based on the RFLP analysis. Our results question the RFLP method to discriminate strains. Not only does this technique fail to detect the entire range of genetic diversity of the viruses but it also might mask differences. Goodman (17) found that the results obtained using the simple RFLP technique for SCSMV strain identification were not in complete agreement with those obtained using sequence comparisons of the CP gene fragments. Today, DNA sequence data are only one of the sources of information used in virus classification. However, this source is becoming increasingly important, with the CP region being highly discriminatory for diagnostic and taxonomic studies if only a subportion of the genome is to be sequenced (1). Nucleotide sequence identities (and amino acid similarities) have been widely used for *Potyvirus* taxonomic purposes (30,32), taking into consideration that all CP gene nucleotide identity percentages vary between 40 and 70% for different potyviruses and are above 90% for different strains of the same virus (14).

The results presented here using both traditional methods and DNA sequencing technology constitute the first detailed report on the characterization of sugarcane potyviruses from Argentina, and also provide the first SCSMV and SrMV sequences from our country.

ACKNOWLEDGMENTS

This project was partially supported by Consejo Nacional de Investigaciones Científicas y Técnicas (CONICET) and Universidad Nacional de Tucumán (UNT). M. L. García, L. D. Ploper, and A. P. Castagnaro are CONICET members. M. F. Perera is a CONICET fellow. We thank P. Rott (CIRAD, France) for providing us with the positive control for SCSMV detection and ST2 and ST5 primer sequences; A. Rago and G. Serino (Chacra Experimental Colonia, Santa Rosa, Argentina) for the infected samples from Salta and Jujuy; F. García Arenal (ETSIA,

Universidad Politécnica de Madrid, Spain) for his technical support and counseling; and M. Butterfield (SASRI, South Africa), A. Manes (EEAOC, Argentina), L. W. Timmer (University of Florida, CREC), A. M. Vázquez (Universidad Complutense de Madrid, Spain), and S. L. Giammaría (EEAOC, Argentina) for reviewing the English version of the manuscript.

LITERATURE CITED

- Adams, M. J., Antoniw, J. F., and Fauquet, C. M. 2005. Molecular criteria for genus and species discrimination within the family *Potyviridae*. *Arch. Virol.* 150:459-479.
- Ahmed, M. A., Cuenya, M. I., García, M. B., and Díaz Romero, C. 2007. Dinámica y características del recambio de variedades de caña de azúcar en Tucumán desde las primeras décadas del siglo XX hasta la actualidad. *Av. Agroind.* 28:17-22.
- Alegria, O. M., Royer, M., Bousalem, M., Chatenet, M., Peterschmitt, M., Girard, J.-C., and Rott, P. 2003. Genetic diversity in the coat protein coding region of eighty-six *Sugarcane Mosaic Virus* isolates from eight countries, particularly from Cameroon and Congo. *Arch. Virol.* 148:357-372.
- Aljanabi, S. M., Forget, L., and Dookun, A. 1999. An improved and rapid protocol for the isolation of polysaccharide and polyphenol-free sugarcane DNA. *Plant Mol. Biol. Rep.* 17:1-8.
- Bennett, C. W. 1941. Informe sobre experimentos con el mosaico de la caña de azúcar en Tucumán, Argentina. *Rev. Ind. Agric. Tucumán* 31:427-437.
- Brunt, A. A. 1992. The general properties of *Potyvirus*s. *Arch. Virol. Suppl.* 5:3-16.
- Cardona G. L. M., Angel S. J. C., Angel S. F., and Victoria K. J. I. 2006. Standardization of reverse transcription polymerase chain reaction (RT-PCR) for diagnosis of the *Streak mosaic virus* of sugarcane in Colombia. In: VIIIth ISSCT Pathology Workshop Petit-Bourg, Guadeloupe.
- Chatenet, M., Mazarin, C., Girard, J. C., Fernandez, E., Gargani, D., Rao, G. P., Royer, M., Lockhart, B., and Rott, P. 2005. Detection of *Sugarcane Streak Mosaic Virus* in sugarcane from several Asian countries. *Proc. Int. Soc. Sugar Cane Technol.* 25:656-662.
- Chen, J., Chen, J., and Adams, M. J. 2001. Molecular characterization of a complex mixture of viruses in garlic with mosaic symptoms in China. *Arch. Virol.* 146:1841-1853.
- Chen, J., Chen, J., and Adams, M. J. 2002. Characterization of potyviruses from sugarcane and maize in China. *Arch. Virol.* 147:1237-1246.
- Croft, B. J., Piggitt, C. M., Wallis, E. S., and Hogarth, D. M. 1996. Sugarcane germplasm conservation and exchange. *Proc. Aust. Cent. Int. Agric. Res. Canberra* 67.
- Espejel, F., Jeffers, D., Noa-Carrazana, J. C., Ruiz-Castro, S., and Silva-Rosales, L. 2006. Coat protein gene sequence of a Mexican isolate of *Sugarcane Mosaic Virus* and its infectivity in maize and sugarcane plants. *Arch. Virol.* 151:409-412.
- Fontana, P. D., Ramallo, J. C., Vellicce, G. R., Ontivero, M., Ploper, D., Diaz Ricci, J. C., and Castagnaro, A. P. 2005. Caracterización molecular de razas del virus del Mosaico de la Caña de Azúcar en Tucumán, Argentina. In: XIII Congr. Latinoamericano Fitopatol. Villa Carlos Paz, Córdoba, Argentina.
- Frenkel, M. J., Ward, C. W., and Shukla, D. D. 1989. The use of 3' non-coding nucleotide sequences in the taxonomy of *Potyvirus*s: application to *Watermelon Mosaic Virus 2* and *Soybean Mosaic Virus-N*. *J. Gen. Virol.* 70:2775-2783.
- Gemechu, A. L., Chiemsombat, P., Attathom, S., Reanwarakorn, K., and Lersrutaiyotin, R. 2006. Cloning and sequence analysis of coat protein gene for characterization of *Sugarcane mosaic virus* isolated from sugarcane and maize in Thailand. *Arch. Virol.* 151:167-172.
- Gonçalves, M. C., Santos, A. S., Maia, I. G., Chagas, C. M., and Harakava, R. 2007. Caracterização de um isolado do *Sugarcane Mosaic Virus* que quebra a resistência de variedades comerciais de cana-de-açúcar. *Fitopatol. Bras.* 32:32-39.
- Goodman, B. S. 1999. A study of South African strains of *Sugarcane Mosaic Potyvirus* (SCMV) identified by sequence analysis of the 5' region of the coat protein gene. M.S. thesis, Department of Biotechnology, Durban University of Technology, Durban, South Africa.
- Goodman, B. S., MacDonald, D., and Hockett, B. I. 1998. A survey of South African *Sugarcane Mosaic Virus* (SCMV) strains based on coat protein gene sequence analysis. *Proc. S. Afr. Sugar Technol. Assoc.* 72:146-148.
- Grisham, M. P. 2000. Mosaic. Pages 249-254 in: *A Guide to Sugarcane Diseases*. P. Rott, R. A. Bailey, J. C. Comstock, B. J. Croft, and A. S. Saumtally, eds. CIRAD/ISSCT, Montpellier, France.
- Grisham, M. P., and Pan, Y. B. 2007. A genetic shift in the virus strains that cause mosaic in Louisiana sugarcane. *Plant Dis.* 91:453-458.

21. Hall, J. S., Adams, B., Parsons, T. J., French, R., Lane, L. C., and Jensen, S. G. 1998. Molecular cloning, sequencing and phylogenetic relationship of a new potyvirus: *Sugarcane streak mosaic virus*, and a reevaluation of the classification of the *Potyviridae*. *Mol. Biol. Evol.* 10:323-332.
22. Handley, J. A., Smith, G. R., Dale, J. L., and Harding, R. M. 1998. Sequence diversity in the coat protein coding region of twelve *Sugarcane Mosaic Potyvirus* isolates from Australia, USA and South Africa. *Arch. Virol.* 143:1145-1153.
23. Hema, M., Sreenivasulu, P., and Savithri, H. S. 2002. Taxonomic position of *Sugarcane streak mosaic virus* in the family *Potyviridae*. *Arch. Virol.* 147:1997-2007.
24. Koike, H., and Gillaspie, A. G., Jr. 1989. Mosaic. Pages 301-322 in: *Diseases of Sugarcane: Major Diseases*. C. Ricaud, B. T. Egan, A. G. Gillaspie, Jr., and C. G. Hughes, eds. Science Publishers, Amsterdam.
25. Lomonosoff, G. P. 1995. Pathogen-derived resistance to plant viruses. *Annu. Rev. Phytopathol.* 33:323-343.
26. Marie-Jeanne, V., Ioos, R., Peyre, J., Alliot, B., and Signoret, P. 2000. Differentiation of *Poaceae* Potyviruses by reverse transcription-polymerase chain reaction and restriction analysis. *J. Phytopathol.* 148:141-151.
27. Perera, M. F., Filippone, M. P., Ramallo, J., Cuenya, M. I., García, M. L., and Castagnaro, A. P. 2007. Genetic diversity of *Sugarcane Mosaic Virus* complex in Tucumán, Argentina. *Proc. Int. Soc. Sugar Cane Technol.* 26:988-994.
28. Ramallo, J., Ramallo, N. E. V., and Ploper, L. D. 2000. Diagnóstico de enfermedades de la caña de azúcar. *Metodologías aplicadas por la EEAOC. Av. Agroind.* 21:8-12.
29. Ramallo, N. E. V. 1981. Razas del mosaico de la caña de azúcar. *Rev. Ind. Agric. Tucumán* 58:57-68.
30. Rybicki, E. P., and Shukla, D. D. 1992. Coat protein phylogeny and systematic of potyviruses. *Arch. Virol. Suppl.* 5:139-170.
31. Shukla, D. D., Strike, P. M., Tracy, S. L., Gough, K. H., and Ward, C. W. 1988. The N- and C-termini of the coat proteins of potyviruses are surface located and the N-terminus contains the major virus-specific epitopes. *J. Gen. Virol.* 69:1497-1508.
32. Shukla, D. D., and Ward, C. W. 1988. Amino acid sequence homology of coat proteins as a basis for identification and classification of the *potyvirus* group. *J. Gen. Virol.* 69:2703-2710.
33. Shukla, D. D., and Ward, C. W. 1989. Identification and classification of potyviruses on the basis of coat proteins sequences data and serology. *Arch. Virol.* 106:171-200.
34. Smith, G. R., and Van de Velde, R. 1994. Detection of *Sugarcane mosaic virus* and *Fiji disease virus* in diseased sugarcane using the polymerase chain reaction. *Plant Dis.* 78:557-561.
35. Thompson, J. D., Gibson, T. J., Plewniak, F., Jeanmougin, F., and Higgins, D. G. 1997. The CLUSTAL-X windows interface: Flexible strategies for multiple sequence alignment aided by quality analysis tools. *Nucleic Acids Res.* 25:4876-4882.
36. Xia, X., Melchinger, A. E., Kuntze, L., and Lübberstedt, T. 1999. Quantitative trait loci mapping of resistance to *Sugarcane mosaic virus* in maize. *Phytopathology* 89:660-666.
37. Xiao, X. W., Frenkel, M. J., Teakie, D. S., Ward, C. W., and Shukla, D. D. 1993. Sequence diversity in the surface-exposed amino-terminal region of the coat proteins of seven strains of *Sugarcane mosaic virus* correlates with their host range. *Arch. Virol.* 132:399-408.
38. Yang, Z. N., and Mirkov, T. E. 1997. Sequence and relationships of sugarcane mosaic and sorghum mosaic virus strains and development of RT-PCR-based RFLPs for strain discrimination. *Phytopathology* 87:932-939.