

Multiple mating and oviposition behavior of *Proceratophrys goyana* (Anura: Odontophrynidae) in the Brazilian Cerrado

Gabriela Carvalho¹, Afonso Santiago de Oliveira Meneses¹, Pedro Paulo de Queiroz², Reuber Albuquerque Brandão¹

¹Universidade de Brasília, Laboratório de Fauna e Unidades de Conservação, Departamento de Engenharia Florestal, Faculdade de Tecnologia. Caixa Postal 04357. CEP 70919-970 Brasília, DF, Brazil.

²Laboratório de Anatomia Comparativa de Vertebrados, Instituto de Biologia, Campus Universitário Darcy Ribeiro. Caixa Postal 04357. CEP 70910-900, Brasília, DF, Brazil.

Recibida: 08 Noviembre 2019

Revisada: 16 Diciembre 2019

Aceptada: 08 Enero 2020

Editor Asociado: M. Vaira

doi: 10.31017/CdH.2020.(2019-046)

ABSTRACT

Polyandry occurs when a female mate, sequentially or simultaneously, with more than one male. Even though this reproductive strategy has been widely studied for some taxa, reports on amphibians are still scarce. Herein, we report amplexus, egg-laying, aggregative behavior and a case of multiple mating in the frog *Proceratophrys goyana*. Coupling occurs outside water and females, that are noticeably larger than males, move to streams where eggs are released at the stream bottom. Multiple mating was observed in a large chorus context, but males' aggregations seem to be uncommon in the species. Multiple spawning in Neotropical frogs occurs in several lineages and it seems to be related to the behavioral context.

Key Words: Amplexus; Cerrado; Polyandry; Reproduction.

Polyandry occurs when a female mate with more than one male, sequentially or simultaneously (Birkhead, 1995). Even though this reproductive strategy is widely studied in several taxa such as mammals and birds, studies in amphibians are still scarce (Orians, 1969, Stockley, 2003). Polyandry may benefit the female since different males, with different fitness, compete for produce part of the future offspring, increasing allelic diversity of the spawning. This reproductive strategy can also enhance the fertilization rate of the ova, when single males cannot fertilize the ova alone, enhancing female fitness (Byrne and Whiting, 2008). However, sometimes females can be drowned by amplexant males in high male density chorus (Izzo *et al.*, 2012, Trauth *et al.*, 2000), highlighting the complexity of reproductive strategies within amphibians.

Larvae growth and survival are usually larger in clutches produced by multiple spawning when compared to clutches fertilized by only one male (Byrne and Whiting, 2008, 2011). On the other hand, males involved in multiple spawning may either be benefited or harmed by the strategy. For some males, polyandry is one of the alternative strategies that would enable reproduction when the main strategy, calling for females, fails (Pombal Jr. and Haddad,

2007). These males, even competing by egg fertilization with other males, can enhance their fitness in multiple spawning situations (Vieites *et al.*, 2004). However, the male that expended energy calling for females and defending territory may have his fitness reduced as more males aggregate in the spawning (Jennions *et al.*, 1992, Roberts *et al.*, 1999, Vieites *et al.*, 2004). Since very few studies are focused in understanding the ecological role and evolution history of polyandry in amphibians (Zamudio *et al.*, 2016), including the occurrence of multiple spawning in tropical species (Prado and Haddad, 2003), natural history observations are essential for filling gaps and provide basic information about this complex reproductive behavior.

The Goiás Smooth Horned Frog *Proceratophrys goyana* (Miranda-Ribeiro 1937) is a terrestrial species widely distributed in central Brazil (Junior *et al.*, 2012, Martins and Giaretta, 2013), occurring in both open and forested habitats (Santoro and Brandão, 2014). *P. goyana* is a prolonged breeder that shows reproductive mode 2, with eggs and exotrophic tadpoles in lotic water (Bastos *et al.*, 2003; Haddad and Prado, 2005; Santoro and Brandão, 2014).

Recent papers published in *Proceratophrys*

frogs deals basically with taxonomic issues (e.g. Brandão *et al.*, 2013; Godinho *et al.*, 2013; Mângia *et al.*, 2014; Mângia *et al.*, 2018; Martins and Giaretta, 2013; Nascimento *et al.*, 2019; Santana *et al.*, 2010). However, very few is known about species natural history, even for common species in the genus, as *Proceratophrys goyana*.

Herein, we report *Proceratophrys goyana* amplexus, egg-laying, aggregative behavior, and a possible multiple spawning event. Amplecting

pairs of *Proceratophrys goyana* were recorded at margins of streams and creeks with rocky bed in the Serra do Tombador Private Reserve, in Cavalcante Municipality, state of Goiás (13°42'13.08"S; 47°45'21.64"W, 960 m a.s.l.) in 15 July 2008 (Fig. 1), in São Domingos Village, Cavalcante Municipality (13°35'0.45"S; 47°37'35.23"W, 1020 m a.s.l), in 25 November 2016, in several opportunities in Volta da Serra Farm, Alto Paraíso de Goiás, state of Goiás (14°09'58.2"S; 47°44'25.0"W, 1020 m a.s.l), and in

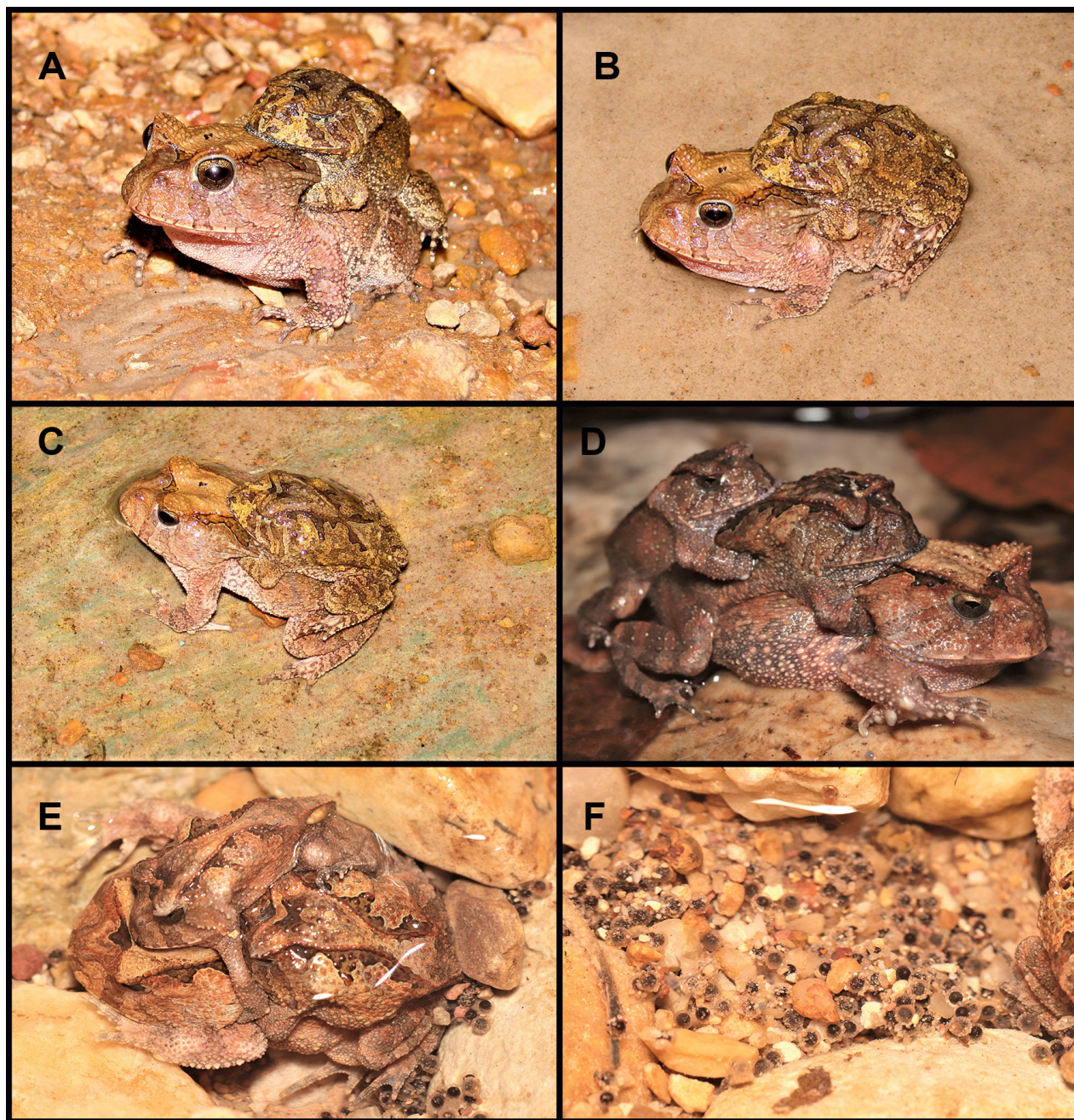


Figure 1. Amplecting pairs of *Proceratophrys goyana*. Amplecting pair in Serra do Tombador Private Reserve formed at stream margin (A), female moving towards the stream (B) and the couple on a rocky bottom stream (C), showing most of the female's body immersed (Photos by RAB). Amplected pair in Volta da Serra Farm before spawning (D), after spawning showing female completely immersed and with some eggs being released (E) and eggs recently released with sand particles adhered (F) (Photos by ASOM).

Chapada dos Veadeiros National Park, Alto Paraíso de Goiás Municipality (about 14°10'S; 47°48'W 1090 m a.s.l). All observed couples moved to the bottom of rocky bed streams or creeks for egg-laying. Eggs were always laid at streams backwaters or in places with slower water flow. The eggs were completely pigmented and presented an outer translucent jelly layer around 4 mm in width including the jelly layer and around 3 mm without the jelly layer (N = 25). Small particles of sand and other debris were quickly adhered to the surface of eggs, turning them confused with the background.

Although reproductive aggregations in *Proceratophrys* species were rarely reported, we recorded a large chorus in Serra do Tombador Reserve on 25 November 2016 and four times in Volta da Serra Farm. These aggregations were recorded at the end of the dry season in the Cerrado or were related to the first heavy rain at the beginning of the rainy season, and are typically composed by dense concentrations of males (up to 44 calling males) surrounding 1 to 2m² pools along perennial or temporary streams. The sex ratio is strongly male-biased, and very few females were observed at these events, suggesting that males arrived earlier to these reproductive sites (see Lodé *et al.*, 2005).

On 06 August 2019 (end of the dry season) in Volta da Serra Farm, we observed at 20:50 hs an amplexed pair with a second, noticeable smaller male, grasping the amplexed male (Fig. 1). The three individuals were the only ones found on a small pool filled by the streamflow placed between rocks and pebbles at the São Miguel stream margin. We returned to the same place four hours later and found frogs still amplexed. At this moment, the smaller male initially placed on top of the first male has moved and grasped the female, and both males were amplexing with the female, who released eggs in the pool (Fig. 1).

Although reproductive aggregations were previously reported for *Proceratophrys vielliardi* (Martins and Giaretta, 2011), this is the first record of multiple mating for the *Proceratophrys* genus. Although the records of polyandry in anurans are scarce (Zamudio *et al.*, 2016) it may be facilitated by some features, as an alternative reproductive strategy (Pombal Jr. and Haddad, 2007). External fertilization is one of the main factors that enable simultaneous polyandry allowing direct access to the ova by the sperm of several males (Byrne, 2004). Multiple mating has been recorded more often in

explosive breeders than in species that build hidden nests or are sensitive to outside disturbance, such as territorial species (Chuang *et al.*, 2013, Ovaska and Rand, 2001). High density, as commonly observed in explosive breeders (Wells, 1997), also enables polyandry events, such as the one herein reported, although *Proceratophrys goyana* is a prolonged breeder (Bastos *et al.*, 2003), and male aggregations seem to be uncommon. Populations with high densities, especially for those where sexual ratio is male-biased, often have enhanced competition for females (Mangold *et al.*, 2015), making more suitable the use of alternative reproductive strategies by not amplexant males. It is interesting to note that most males that decide to invest in multiple mating are often smaller than the first male to access females (Vieites *et al.*, 2004; Lodé *et al.*, 2005).

Most of the records of polyandry in frogs are for species with foam nests in water (reproductive modes 11 and 13) or in vegetation (reproductive mode 33) (Liao and Lu, 2010; Prado and Haddad, 2003, Ron *et al.*, 2014), because foam nests can allow the retention of sperm and the access of pirate sperms to the ova (Kusano *et al.*, 1991, Vieites *et al.*, 2004, Zamudio *et al.*, 2016). Moreover, polyandry in species with different reproductive modes have also been reported, such as *Afrivalus delicatus*, *Crinia georgiana*, *Chiromantis xerampelina*, *Rana latastei* (Backwell and Passmore, 1990; Byrne, 2002, Jennions *et al.*, 1992; Roberts *et al.*, 1999), and Phyllomedusidae frogs (Dias *et al.*, 2012; Oliveira *et al.*, 2014; Prado *et al.*, 2006, Roberts, 1994).

Our records increase the knowledge about *Proceratophrys* genus natural history, reporting different mating strategies in different lineages that can contribute to studies focusing on the evolution of reproductive strategies in Anura.

Acknowledgements

We are grateful to Lauro Jurgeaitis and Fazenda Volta da Serra, for support during fieldwork. The manuscript previous version was largely improved by pertinent suggestions made by Cuadernos de Herpetología reviewers.

Literature cited

- Backwell, P.R.Y. & Passmore, N.I. 1990. Polyandry in the leaf-folding frog, *Afrivalus delicatus*. *Herpetologica* 46: 7-10.
- Bastos, R.P.; Motta, J.D.O.; Lima, L.P. & Guimarães L.D. 2003. Anfíbios da Floresta Nacional de Silvânia, Estado de Goiás. Stylo Gráfica e Editora, Goiânia.
- Birkhead, T.R. 1995. Sperm competition: Evolutionary causes

G. Carvalho *et al.* — Multiple mating in *Proceratophrys goyana*

- and consequences. *Reproduction, Fertility and Development* 7: 755-775.
- Brandão, R.A.; Caramaschi, U.; Vaz-Silva, W. & Campos, L.A. 2013. Three new species of *Proceratophrys* Miranda-Ribeiro 1920 from the Brazilian Cerrado (Anura, Odontophrynidae). *Zootaxa* 3750: 321-347.
- Byrne, P.G. 2002. Climatic correlates of breeding, simultaneous polyandry and potential for sperm competition in the frog *Crinia georgiana*. *Journal of Herpetology* 36: 125-129.
- Byrne, P.G. 2004. Male sperm expenditure under sperm competition risk and intensity in quacking frogs. *Behavioral Ecology* 15: 857-863.
- Byrne, P.G. & Whiting, M.J. 2008. Simultaneous polyandry increases fertilization success in an African foam-nesting treefrog. *Animal Behaviour* 76: 1157-1164.
- Byrne, P.G. & Whiting, M.J. 2011. Effects of simultaneous polyandry on the offspring fitness in an African treefrog. *Behavioral Ecology* 22: 385-391.
- Chuang, M.F.; Bee, M.A. & Kam, Y.C. 2013. Short amplexus duration in a territorial anuran: a possible adaptation in response to male-male. *PlosOne* 8: e83116.
- Cruz, C.A.G.; Nunes, I. & Juncá, F.A. 2012. Redescription of *Proceratophrys cristiceps* (Muller, 1883) (Amphibia, Anura, Odontophrynidae), with description of two new species without eyelid appendages from northeastern Brazil. *South American Journal of Herpetology* 7: 110-122.
- Dias, T.M.; Maragno, F.P.; Prado, C.P.A. & Cechin, S.Z. 2012. *Phyllomedusa azurea*. Multiple spawning. *Herpetological Review* 43: 634.
- Godinho, L.B.; Moura, M.R.; Lacerda, J.V.A. & Feio, R.N. 2013. A new species of *Proceratophrys* (Anura: Odontophrynidae) from the middle São Francisco River, southeastern Brazil. *Salamandra* 49: 63-73.
- Haddad, C.F.B. & Prado, C.P.A. 2005. Reproductive modes in frogs and their unexpected diversity in the Atlantic Forest of Brazil. *BioScience* 55: 207-217.
- Izzo, T.J.; Rodrigues, D.J.; Menin, M.; Lima, A.P. & Magnusson, W.E. 2012. Functional necrophilia: a profitable anuran reproductive strategy? *Journal of Natural History* 46: 2961-2967.
- Jennions, M.D.; Backwell, P.R.Y. & Passmore, N.I. 1992. Breeding behaviour of the African frog, *Chiromantis xerampelina*: multiple spawning and polyandry. *Animal Behaviour* 44: 1091-1100.
- Liao, W.B. & Lu, X. 2010. Breeding behavior of the Omei tree frog *Rhacophorus omeimonstis* (Anura: Rhacophoridae) in subtropical montane region. *Journal of Natural History* 44: 2929-2940.
- Lodé, T.; Holveck, M.J. & Lesbarreres, D. 2005. Asynchronous arrival pattern, operational sex ratio and occurrence of multiple paternities in a territorial breeding anuran, *Rana dalmatina*. *Biological Journal of the Linnean Society* 86: 191-200.
- Mângia, S.; Santana, D.J.; Cruz, C.A.G. & Feio, R.N. 2014. Taxonomic review of *Proceratophrys melanopogon* (Miranda-Ribeiro, 1926) with description of four new species (Amphibia, Anura, Odontophrynidae). *Boletim do Museu Nacional Nova Série Zoologia* 531: 1-33.
- Mângia, S.; Koroiva, R.; Nunes, P.M.S.; Roberto, I.J.; Ávila, R.W.; Sant'Anna, A.C.; Santana, D.J. & Garda, A.A. 2018. A new species of *Proceratophrys* (Amphibia: Anura: Odontophrynidae) from the Araripe Plateau, Ceará state, northeastern Brazil. *Herpetologica* 74: 255-268.
- Mangold, A.; Trenkwalder, K.; Ringler, M.; Hodl, W. & Ringler, E. 2015. Low reproductive skew despite high male-biased operational sex ratio in a glass frog with parental care. *BMC Evolutionary Biology* 15: 181.
- Martins, L.B. & Giaretta, A.A. 2011. A new species of *Proceratophrys* Miranda-Ribeiro (Amphibia: Anura: Cycloramphidae) from central Brazil. *Zootaxa* 2880: 41-50.
- Martins, L.B. & Giaretta, A.A. 2013. Morphological and acoustic characterization of *Proceratophrys goyana* (Lissamphibia: Anura: Odontophrynidae), with the description of a sympatric and related new species. *Zootaxa* 3750: 301-320.
- Oliveira, V.F.; Dias, T.M. & Santos, T.G. 2014. Multiple amplexus and spawning in the leaf frog *Phyllomedusa iheringii* (Hylidae, Phyllomedusinae). *Herpetology Notes* 7: 119-120.
- Orians, G. H. 1969. On the evolution of mating systems in birds and mammals. *The American Naturalist* 103: 589-603.
- Ovaska, K. & Rand, A.S. 2013. Courtship and reproductive behavior of the frog *Eleutherodactylus diastema* (Anura: Leptodactylidae) in Gamboa, Panama. *Journal of Herpetology* 35: 44-50.
- Pombal Jr, J.P. & Haddad, C.F.B. 2007. Estratégias e modos reprodutivos em anuros. *Herpetologia no Brasil* 2: 101-116.
- Prado, C.P.A. & Haddad, C.F.B. 2003. Testes size in Leptodactylid frogs and occurrence of multimale spawning in the genus *Leptodactylus* in Brazil. *Journal of Herpetology* 37: 354-362.
- Prado, C.P.A.; Toledo, L.F.; Woehl, G. Jr. & Castanho, L.M. 2006. *Phyllomedusa distincta* (leaf frog). Multimale spawning. *Herpetological Review* 37: 207-207.
- Roberts, W.E. 1994. Explosive breeding aggregations and parachuting in Neotropical frog, *Agalychnis saltator* (Hylidae). *Journal of Herpetology* 28: 193-199.
- Roberts, J.D.; Standish, R.J.; Byrne, P.G. & Doughty, P. 1999. Synchronous polyandry and multiple paternity in the frog *Crinia georgiana* (Anura: Myobatrachidae). *Animal Behaviour* 57: 721-726.
- Ron, S.R.; Narváez, A.E. & Romero, G.E. 2014. Reproduction and spawning behavior in the frog *Engystomops pustulatus* (Shreve 1941). *Amphibian & Reptile Conservation* 8: 25-32.
- Santana, D.J.; São-Pedro, V.A.; Bernarde, P.S. & Feio, R.N. 2010. Descrição do canto de anúncio e dimorfismo sexual em *Proceratophrys concavitympanum* Giaretta, Bernarde & Kokobum, 2000. *Papéis Avulsos de Zoologia do Museu de Zoologia da Universidade de São Paulo* 50: 167-174.
- Santoro, G.R.C.C. & Brandão, R.A. 2014. Reproductive modes, habitat use, and richness of anurans from Chapada dos Veadeiros, central Brazil. *North-Western Journal of Zoology* 10: 365-373.
- Simmons, L.W. 2005. The evolution of polyandry: sperm competition, sperm selection, and offspring viability. *Annual Review of Ecology, Evolution and Systematics* 36: 125-146.
- Stockley, P. 2003. Female multiple mating behaviour, early reproductive failure and litter size variation in mammals. *Proceedings of the Royal Society: Biological Sciences* 270: 271-278.
- Trauth, S.E.; McCallum, M.L. & Cartwright, M.E. 2000. Breeding mortality in the wood frog, *Rana sylvatica* (Anura: Ranidae), from northcentral Arkansas. *Journal of the Arkansas*

Academy of Science 54: 154-156.
Vieites, D.R.; Nieto-Román, S.; Barluenga, M.; Palanca, A.;
Vences, M. & Meyer, A. 2004. Post mating clutch piracy in
an amphibian. *Nature* 431: 305-308.
Wells, K.D. 1997. The social behaviour of anuran amphibians.

Animal Behaviour 25: 666-693.
Zamudio, K.R.; Bell, R.C; Mali, R.C.; Haddad, C.F. & Prado,
C.P. 2016. Polyandry, predation, and the evolution of frog
reproductive modes. *The American Naturalist* 188: 41-61.

© 2020 por los autores, licencia otorgada a la Asociación Herpetológica Argentina.
Este artículo es de acceso abierto y distribuido bajo los términos y condiciones de
una licencia Atribución-No Comercial 2.5 Argentina de Creative Commons. Para ver
una copia de esta licencia, visite <http://creativecommons.org/licenses/by-nc/2.5/ar/>

