

# A BK (Slo1) channel journey from molecule to physiology

Gustavo F Contreras<sup>1,2</sup>, Karen Castillo<sup>1</sup>, Nicolás Enrique<sup>4</sup>, Willy Carrasquel-Ursulaez<sup>1,2</sup>, Juan Pablo Castillo<sup>1,3</sup>, Verónica Milesi<sup>4</sup>, Alan Neely<sup>1</sup>, Osvaldo Alvarez<sup>3</sup>, Gonzalo Ferreira<sup>5</sup>, Carlos Gonzalez<sup>1,\*</sup>, and Ramon Latorre<sup>1,\*</sup>

<sup>1</sup>Centro Interdisciplinario de Neurociencia de Valparaíso; Facultad de Ciencias; Universidad de Valparaíso; Valparaíso, Chile; <sup>2</sup>Doctorado en Ciencias mención Neurociencia; Universidad de Valparaíso; Valparaíso, Chile; <sup>3</sup>Facultad de Ciencias; Universidad de Chile; Santiago, Chile; <sup>4</sup>Grupo de Investigación en Fisiología Vascul ar (GINFIV); Universidad Nacional de la Plata; La Plata, Argentina; <sup>5</sup>Laboratorio de Canales Iónicos; Departamento de Biofísica; Facultad de Medicina; Universidad de la República; Montevideo, Uruguay

**Keywords:** BK channels, Slo1, auxiliary subunits, voltage sensor, intracellular Ca<sup>2+</sup>, smooth muscle, diseases

**Abbreviations:** BK, big conductance voltage and Ca<sup>2+</sup>-dependent potassium channel; Charybdotoxin, ChTx; Iberotoxin, IbTx; regulator of the conductance of K<sup>+</sup> channels, RCK; voltage sensing domain, VSD; leucine-rich repeat proteins, LRRRC; nitric oxide, NO; cyclic guanosin mono-phosphate, cGMP

Calcium and voltage-activated potassium (BK) channels are key actors in cell physiology, both in neuronal and non-neuronal cells and tissues. Through negative feedback between intracellular Ca<sup>2+</sup> and membrane voltage, BK channels provide a damping mechanism for excitatory signals. Molecular modulation of these channels by alternative splicing, auxiliary subunits and post-translational modifications showed that these channels are subjected to many mechanisms that add diversity to the BK channel  $\alpha$  subunit gene. This complexity of interactions modulates BK channel gating, modifying the energetic barrier of voltage sensor domain activation and channel opening. Regions for voltage as well as Ca<sup>2+</sup> sensitivity have been identified, and the crystal structure generated by the 2 RCK domains contained in the C-terminal of the channel has been described. The linkage of these channels to many intracellular metabolites and pathways, as well as their modulation by extracellular natural agents, has been found to be relevant in many physiological processes. This review includes the hallmarks of BK channel biophysics and its physiological impact on specific cells and tissues, highlighting its relationship with auxiliary subunit expression.

## Introduction

BK channels are members of a family of Ca<sup>2+</sup> and voltage-dependent potassium channels. They are constituted by a tetramer of  $\alpha$  subunits that form the conducting pore and are encoded by the *slo1* gene. In several tissues, BK channels have been observed to be modulated by auxiliary subunits, which confer important physiological performance to the channels. BK channels are ubiquitously expressed in cell membranes of mammalian tissues, where they couple signals that result from differences in membrane

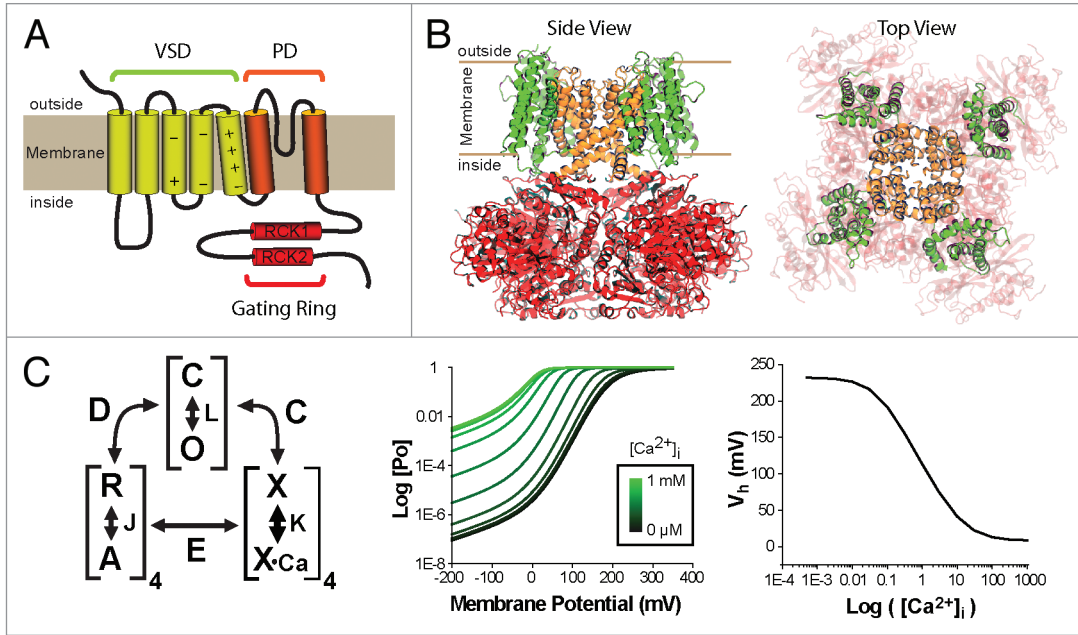
voltage and intracellular Ca<sup>2+</sup> concentration, which are both key actors in the physiology of nervous and non-nervous cells. In this review we provide an overview of BK channel function and its relationship with structural cues, the voltage sensor domain and gating properties of the channels, as well as its crosstalk with its auxiliary subunits.

## A Short Story about How BK Channels Were Identified

The first evidence of a K<sup>+</sup> permeability induced by increases in intracellular calcium concentration was obtained in red blood cells.<sup>1</sup> Later, a calcium-dependent K<sup>+</sup> current was reported from experiments where Ca<sup>2+</sup> was injected in motoneurons, resulting in both an increase in membrane conductance and a decrease in cellular excitability.<sup>2</sup> Moreover, the removal of external Ca<sup>2+</sup> was found to decrease a voltage-dependent K<sup>+</sup> current in mollusk neurons.<sup>3,4</sup> A few years later, these currents were defined as being carried by a calcium-dependent potassium current,<sup>5</sup> after which their critical role in neuronal firing properties and hyperpolarization was soon acknowledged.<sup>6</sup>

The year 1981 was the *annus mirabilis* of BK channel research, since abundant expression of these channels was found in skeletal muscles and chromaffin cells. Single channel recordings from skeletal muscle and chromaffin cells<sup>7,8</sup> as well as the reconstitution of a calcium-dependent K<sup>+</sup> channel in bilayers<sup>9</sup> revealed the large conductance of BK channels, which ranges within 200 pS. This magnitude gave rise to the names MaxiK or BK, thus representing the large conductance potassium channel.<sup>10</sup> With the advent of the giga-seal patch clamp technique<sup>11</sup> and the possibility of isolating and patching small cells, BK channels were soon found and described in liver, lymphocyte, epithelium, exocrine, and endocrine glands as being linked to excitation-secretion coupling.<sup>8,12–14</sup> Marty et al. discovered that channels of different conductance give rise to Ca<sup>2+</sup>-dependent potassium currents in rat lacrimal glands and named the largest conductance type channel *BK*.<sup>15</sup> By that time, another important finding regarding this channel's localization was made, namely that it is abundantly

\*Correspondence to: Carlos Gonzalez; Email: carlos.gonzalezl@uv.cl; Ramon Latorre; Email: ramon.latorre@uv.cl  
Submitted: 07/30/2013; Revised: 08/20/2013; Accepted: 08/22/2013  
<http://dx.doi.org/10.4161/chan.26242>



**Figure 1.** Structural and functional characteristics of BK channels. (A) Schematic topology of 1 BK channel  $\alpha$  subunit. (B) Homology model of BK channel from the side (left) and top (right). The transmembrane domain is a homology model of MthK (PDB 1LNQ) and the cytoplasmic domain corresponds to the crystal structure of the human BK channel gating ring. (C) HA allosteric model of BK channel activation. Activation of pore, voltage sensor and calcium sensor domains are described by L, J and K equilibrium constants. D, C and E are allosteric constants that couple with each functional domain (left). The calcium (middle) and voltage (right) dependence of open probability is also described by the HA allosteric model in a semi-logarithmic scale at different  $[\text{Ca}^{2+}]_i$ .

expressed in smooth muscles.<sup>16</sup> Experiments in neurons soon demonstrated that the BK channel is an essential component for neurotransmitter release in presynaptic terminals.<sup>17</sup> In addition, BK channels serve as negative feedback pathways in neurons during membrane depolarization and changes in intracellular  $\text{Ca}^{2+}$  concentration.<sup>18,19</sup> Contemporaneously, Miller et al., discovered Charybdotoxin (ChTX), which is a scorpion toxin that is able to block BK channels with nM affinity.<sup>20</sup> However, other  $\text{K}^+$  channels are also sensitive to ChTX, thus encouraging the search for a more specific toxin. Consequently, the Iberitoxin (IbTX) was isolated from the scorpion venom and was shown to be a more specific blocker with a high degree of affinity to BK channels.<sup>21</sup>

A calcium-sensitive component of the potassium currents was soon identified in *Drosophila*, which was later shown to correspond to the *slowpoke* allele.<sup>22</sup> The *slowpoke* was then isolated, cloned and expressed in heterologous systems, and shown to indeed produce BK channels.<sup>23,24</sup> The BK mammalian counterpart was soon cloned, and it was demonstrated that general molecular characteristics of BK channels are evolutionarily conserved from fly to mouse.<sup>25</sup>

Functional BK channel diversity is quite frequent and is attained by alternative splicing of the  $\alpha$  subunit, interaction with auxiliary subunits and other partners, post-translational modification, and trafficking.<sup>18,19,26</sup> This review focuses on questions and advances related to the main and auxiliary subunits of BK channels, the molecular mechanisms proposed for gating that are governed by the voltage sensing domain and, finally, their relevance in certain cell physiology and pathophysiological events.

### The Structure of the Slo Channels

The family of Slo channels is composed by the following three main members: (1) the BK channel, also known as Slo1; (2) Slo2 (with 2 variants: Slick and Slack), underlying  $\text{Na}^+$  and  $\text{Cl}^-$ -activated  $\text{K}^+$  channels; (3) and Slo3 (also called KSpers), giving rise to the  $\text{H}^+$  activated  $\text{K}^+$  channel.<sup>19</sup> The HUGO gene nomenclature, common names and locations for the 3 variants of Slo channels mentioned above are presented in Table 1.

Slo channels are homotetramers of 4 pore-forming  $\alpha$ -subunits, whose topology resembles that of voltage-gated  $\text{K}^+$  ( $\text{K}_v$ ) channels, but also include a large C-terminal cytoplasmic domain and an extra transmembrane segment (S0), as in the case of Slo1 and Slo3.<sup>27,28</sup> The C-terminus appears to confer ion sensitivity to the different members of this family.<sup>19</sup> In fact,  $\text{Ca}^{2+}$  binding sites and regulatory domains have been identified in this region of the BK  $\alpha$  subunit (Fig. 1). This subunit, containing about 1200 amino acids, also includes critical structural features of the channel such as ion permeation, gating, and modulation by other proteins and intracellular ions. The functional channel is composed of a tetramer of  $\alpha$  subunits and a putative tetramerization domain, which has been described in the C-terminal region of the channel. This domain is near the pore region and is termed *BK-T1*.<sup>29</sup>

Electron cryo-microscopy studies have provided some insights about the channel's structure in its native lipid environment. By averaging thousands of images of structures obtained from frozen vesicles, a 3D reconstruction was made with an approximate resolution of 20 Å.<sup>30</sup> The general architecture of the channel resembles that of  $\text{K}_v$  channels, with the exception of

**Table 1.** SLO family channels

Channel or subunit	Alternating names	Gene symbol (human)	Location	Estimated conductance
SLO1	BK, $K_{Ca}$ , Maxi-K, $K_{Ca}$ 1.1, Big Potassium	KNCMA1	10q22.3	100–270 pS
SLO2.1	Slick, $K_{Na}$ , $K_{Ca}$ 4.2, sodium activated potassium channel, sodium and chloride activated ATP sensitive potassium channel	KCNT2	1q31.3	60–140 pS
SLO2.2	Slack, $K_{Na}$ , $K_{Ca}$ 4.1 EIEE14, ENFL5	KCNT1	9q34.3	100–180 pS
SLO3	$K_{Ca}$ 5.1, Slowpoke homolog 3, pH-sensitive maxi potassium channel	KCNU1	8p11.2	8p11.2 pS

large protrusions in the external aspect of the channel that may correspond to the S0 and N-terminal regions of the protein.

### Calcium Sensitivity, Voltage Sensor, and Gating Mechanisms

#### Structure and function studies on calcium and divalent cation sensitivity

Many studies have revealed that  $Ca^{2+}$  binding promotes a leftward shift of the steady-state open probability of BK channels (Fig. 1C).<sup>7,8,31</sup> The channels' affinity to  $Ca^{2+}$  has been determined to be between 1–10  $\mu$ M,<sup>32,33</sup> and was later found to be regulated by modulatory proteins and metabolic conditions.<sup>34</sup> Colocalization of Slo1 channels with VDCC (voltage-dependent calcium channels) appears to be essential for Slo1 channel activation since to raise the channel open probability to reasonable values ( $P_o \geq 0.5$ ) at membrane voltages in the range -50 to 0 mV requires range of  $Ca^{2+}$  concentrations of 10  $\mu$ M or more.<sup>35</sup> Colocalization of BK and VDCC channels has been found in hair cell (Fig. 3A, middle).<sup>36,37</sup> Similarly, BK channels can form macromolecular complexes with VDCC channels in neurons.<sup>38</sup> Moreover, cytosolic  $Ca^{2+}$  per se is able to open the channels.<sup>39</sup> Current models have proposed that voltage sensing is more effectively translated into channel gating (opening) as intracellular calcium increases, thus imposing channels to open at more negative voltages than when  $Ca^{2+}$  is not present.<sup>31,33,39,40</sup> Figure 1C illustrates BK  $Ca^{2+}$ -dependence curves at different membrane voltage.

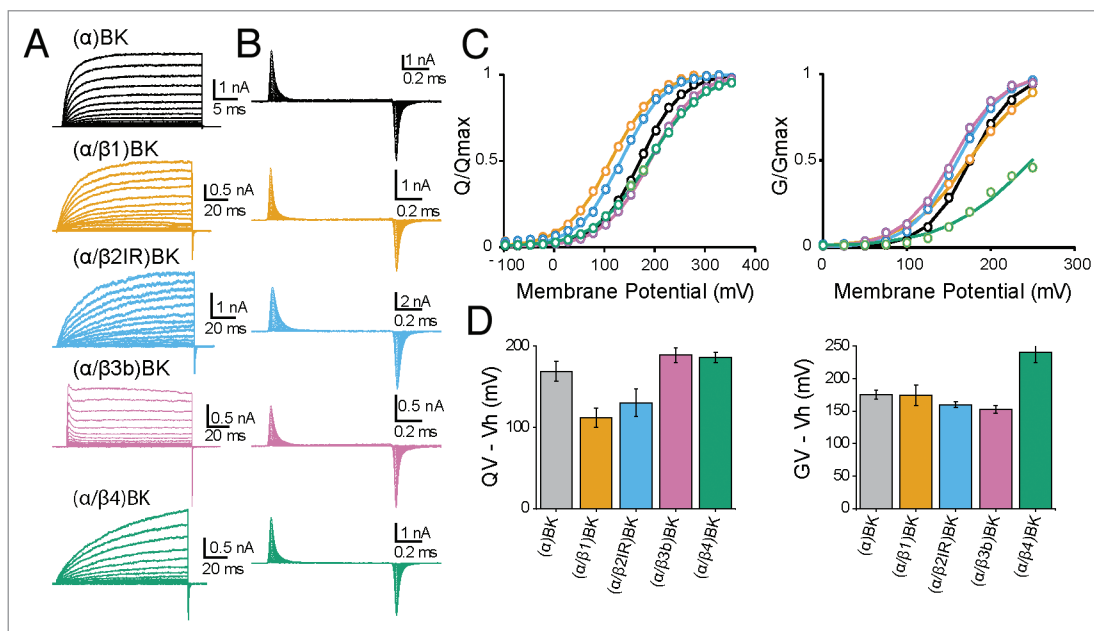
The first site within the C-terminus to be identified as a high affinity  $Ca^{2+}$  binding site in BK channels was dubbed the  $Ca^{2+}$  bowl.<sup>41</sup> This  $Ca^{2+}$  bowl contains several acidic residues (T273 to Q910 in mSlo1) that dramatically alter the channel's  $Ca^{2+}$  sensitivity when mutated.<sup>42–44</sup> Soon after this finding, multiple sites of high  $Ca^{2+}$  affinity in the large intracellular proximal part of the C-terminus of the channel were reported.<sup>45–48</sup> This region, conserved among prokaryotes and similar to TrkA domains that regulate  $K^+$  conductance in many prokaryotic cells, was established as the  $K^+$  channel conductance regulator and named the RCK domain (Fig. 1A and B). BK channels contain 2 RCK domains in tandem in the C-terminus of the  $\alpha$  subunit, located in positions 340 to 610 for RCK1, and 640 to 1055 for RCK2, as was described for the human BK channel.<sup>49,50</sup> The crystal structure of a  $Ca^{2+}$ -gated  $K^+$  channel in bacteria, called MthK, revealed the existence of 4 RCK domains that co-assemble in a solution

forming a ring. The conformation of this ring changes upon  $Ca^{2+}$  binding and is known as the gating ring.<sup>49,51</sup> Each RCK domain contributes to the binding of 3  $Ca^{2+}$  ions, providing a total of 24  $Ca^{2+}$  ions bound to the ring in the MthK channel.<sup>52</sup> The RCK domain structure of the MthK channel has also been identified with  $Cd^{2+}$  bound to the ring,<sup>53</sup> uncovering a large negatively charged surface in the C-terminal region. Neutralization of the charges in the RCK domain induces a change in the channel conformation that facilitates channel opening.<sup>53</sup> The structure of the BK channel with and without bound  $Ca^{2+}$  has shown that  $Ca^{2+}$  stretches the intracellular region of the channel, thus transferring a conformational change to the coupling produced between voltage sensors and gating.<sup>50,52</sup> The structural determinations of the BK RCK domains with 3 Å resolution<sup>50</sup> displayed that each  $\alpha$  subunit contains a pair of RCK domains in the C-terminus portion, and that the  $Ca^{2+}$  bowl resides within the distal RCK domain (Fig. 1A and B). Hence, as initially proposed for prokaryotes, eukaryotes also have an octameric gating ring in the intracellular C-terminal region of the channel, thus conferring its  $Ca^{2+}$  dependence.<sup>50,54</sup> Spectroscopy and particle-scale optical dynamic light scattering analysis revealed a significant reduction and reverse in the gating ring radius upon  $Ca^{2+}$  binding in the BK channel.<sup>55</sup> Furthermore, measurements by FRET also indicated that  $Ca^{2+}$  binding to the RCK domains induced changes in the gating ring, which seem to be significantly greater than those hypothesized by crystallography.<sup>56</sup>

In addition to calcium, other divalent ions have been reported to bind to the  $Ca^{2+}$ -sensing sites of the BK channel, and some like  $Ba^{2+}$ ,  $Mg^{2+}$ ,  $Zn^{2+}$ , and  $Cd^{2+}$  have been reported bind in crystallographic experimental approaches.<sup>48,53,57,58</sup> The  $Mg^{2+}$  site is of particular interest, since it is formed by an interdomain composed of membrane spanning domains and cytoplasmic portions that are mostly located in its RCK1 domain.<sup>46,59</sup>  $Mg^{2+}$  ions that are bound to this site repel R213 residue in the S4 transmembrane segment, hence facilitating the active configuration of the voltage sensor and, consequently, the channel opening.<sup>59,60</sup>

#### The voltage sensor in BK channels

Early experiments in BK channels suggested that they could be activated by voltage in the absence of intracellular divalent cations.<sup>61</sup> Their structural similarity to Kv channels, as observed by cloning the  $\alpha$  subunit of the BK channel in *Drosophila* and mice, suggested the presence of a voltage sensor domain (VSD)



**Figure 2.** Ionic and gating currents for (α)BK and (α/βx)BK channels. **(A)** Representative families of ionic currents evoked by voltage steps of 50 ms for (α)BK and 120 ms for the α/βx complexes, ranging from 0 to 250 mV in 10 mV steps. Currents were recorded in 1 mM symmetrical K<sup>+</sup> and ~5 nM Ca<sup>2+</sup>. **(B)** Gating currents elicited by 1 ms pulse duration to increasing voltages from -90 to 350 mV in increments of 10 mV; pulse duration was set to reach a quasi-steady-state. **(C)** Gating charge-voltage and conductance-voltage relationships for (α)BK and (α/βx)BK channels. Q-V and G-V curves correspond to (α)BK (black), (α/β1)BK (orange), (α/β2IR)BK (light blue), (α/β4)BK channels (bluish green). **(D)** Quantification of V<sub>h</sub> and z obtained from fits to Q-V relations (values represent mean ± S.D.).

(Fig. 1A), putatively lying in a conserved positively charged S4 transmembrane spanning segment of the protein.<sup>23-25</sup> The first direct demonstration that BK channels possess an intrinsic voltage sensor came from gating current measurements in the absence of intracellular Ca<sup>2+</sup>.<sup>39,62,63</sup> The gating or sensing currents of BK channels proceed within a very fast time frame and have weak voltage dependence ( $-0.7e_0/\text{voltage sensor}$ ) compared with those found in Kv and Ca<sup>2+</sup> channels. Auxiliary proteins and other agents can directly affect the voltage-dependence and kinetics of the gating currents.<sup>64,65</sup> Studies on BK channels expressed in heterologous systems have also shown that several mechanisms are involved in channel gating based on voltage differences and Ca<sup>2+</sup> changes.<sup>33,62,66,67</sup>

The S4 segment of BK channels has three positively charged residues (Fig. 1A), but only one (i.e., the R213) seems to contribute to the total amount of gating charges. Other important amino acid residues of the voltage sensor, including D153 and R167, are located in the S2 segment. However, the D186 residue, which is also involved in charge movements of the gating current, is present in the S3 segment of the channel.<sup>68</sup> The structural rearrangements of the voltage sensor during BK channel activation have also been studied by using the voltage clamp fluorometry technique. In this technique,<sup>56,69</sup> fluorescent probes are attached to cysteine residues in a region thought to undergo conformational changes during voltage sensor charge movements. Changes in the environment where the probe is located may result in changes in fluorescence intensity, which is recorded together with electrophysiological determinations. When the fluorescent probe is introduced in the S3-S4 region of the protein, measurements of voltage-dependent

changes that correlate with fluorescence fluctuations can account for the conformational changes in the voltage sensor during channel activation. Nevertheless, extremely slow conformational changes were unexpectedly revealed by the fluorescent labeling of position 202 of the S4 segment, which might be explained due to the interaction of the fluorophore with nearby tryptophan 203.<sup>69</sup> The quenching of the fluorescent probe diminished with W203F mutation, suggesting that this residue acts as an intrinsic fluorescence quencher. Based on these results, it has been hypothesized that a possible secondary structure of the voltage sensor in the BK channel in the S3-S4 region, placing amino acids L204, G205, and L206 within the extracellular portion of the S4 helical transmembrane segment.<sup>70</sup> Fluorescent labeling of tryptophan introduced residues that showed that the voltage sensing domain (VSD) of the S4 segment moves away from the S1 and S2 segments, while S2 gets closer to the S1 segment during voltage-dependent activation gating.<sup>71</sup> The S0 segment seems to play a pivot-like role, by which the S4 segment moves upward during depolarization, thus facilitating the opening of the channel.<sup>72</sup> All together, these results allowed for hypothetical interpretations of how the BK channel might function and how Ca<sup>2+</sup> and voltage sensing can be incorporated so as to understand the BK channel as an allosteric protein.<sup>73</sup>

#### Mechanisms of gating: allosteric linkage of channel opening to voltage and calcium sensitivity

One of the most successful models that explains the behavior of BK channels is the one developed by Horrigan, Cui, Cox and Aldrich in a series of papers by the end of the 90s.<sup>33,62,67,74</sup> Following the Monod-Wyman-Changeux scheme of channel



**Table 2.** Alternative splicing variants of BK channels and modulatory subunits

Channel or subunit	Gene symbol (human)	Location	Tissue expression	
BK <sub>ca</sub>	KCNMA	10q22.3	<i>Zero</i> : brain, kidney, thymus, stomach, muscle, small intestine, testis, adrenal gland, uterus, prostate, pituitary, breast virgin, breast pregnant, breast lactating, embryo (9.5, 12.5, 19 d) <i>STREX (e21)</i> : brain, heart, kidney, spleen, thymus, stomach, muscle, small intestine, lung, testis, adrenal gland, pancreas, uterus, prostate, pituitary, breast virgin, breast pregnant, breast lactating, breast involuting, embryo (8.5, 9.5, 12.5, 19 d) <i>e22</i> : spleen, liver, muscle, small intestine, skin, uterus, prostate, breast virgin, breast pregnant, breast lactating, breast involuting, embryo (9.5, 12.5, 19 d) <i>Δe23</i> : brain, heart, kidney, spleen, thymus, liver, stomach, muscle, small intestine, lung, testis, skin, adrenal gland, pancreas, uterus, prostate, pituitary, breast virgin, breast pregnant, breast lactating, breast involuting, embryo (8.5, 9.5, 12.5, 19 d)	
β subunit	β1	KCNMB1	5q34	smooth muscle, aorta, trachea, kidney, urinary bladder, brain
	β2	KCNMB2	3q26.32	spleen, placenta, pancreas, heart, kidney, uterus, chromafin cells, brain, dorsal root ganglia
	β3	KCNMB3	3q26.3-q27	β3a: spleen, placenta, pancreas, heart, kidney; β3b: spleen, pancreas, kidney, heart, brain, placenta, lung, liver, testes; β3c: spleen, prostate, placenta, liver, kidney, pancreas, ovary, brain, lung; β3d: spleen, testes, placenta, kidney, pancreas, brain, lung
	β4	KCNMB4	12q	brain, neuronal tissue, kidney, bladder smooth muscle
γ subunit	γ1	LRRC26	9q34.3	cerebellum, brain (whole), fetal brain, testis, aorta, mucosa, lung, trachea, prostate, thyroid gland, thymus, salivary glands, acinar cells, epithelial cells, hair cells (inner ear), arterial smooth muscle cells
	γ2	LRRC52	1q24.1	testis, skeletal muscle, placenta, sperm cells, kidney, lung, prostate, thyroid gland, salivary gland
	γ3	LRRC55	11q12.1	brain (whole: mitral cell layers of olfactory bulb, medial habenular nuclei of thalamus, ventral tegmental area, substantia nigra, cortex), fetal brain, placenta, uterus, testis, liver, spleen, lung, thymus, skeletal muscle, prostate, kidney, adrenal gland, salivary gland, thyroid gland, trachea
	γ4	LRRC38	p36.21	cerebellum, brain (whole), fetal brain, placenta, uterus, testis, skeletal muscle, aorta, spleen, trachea, prostate, thyroid gland, thymus, salivary gland, adrenal gland

allosteric modeling, the authors proposed that the channel subunit can undergo closed to open transitions in the absence of Ca<sup>2+</sup> or membrane depolarization. They also proposed that Ca<sup>2+</sup> binding or membrane depolarization produces conformational changes that are allosterically coupled to the channel gate, hence facilitating its opening (Fig. 1C).<sup>39</sup>

### BK Channel Diversity

#### Alternative splicing of BK channels

There is a single gene encoding the α subunit of BK channels, in contrast with other members of the voltage-dependent potassium channel family. The structural and functional diversity of BK channels has been established by alternative splicing of the *slo1* gene and based on the association with auxiliary subunits that are encoded by multiple genes (Table 2). Many groups have described alternative gene *slo1* splicing that can produce the α subunit of the BK channel with different functional properties and tissue distribution.<sup>75-78</sup> Interestingly, the analysis of alternative splicing in BK channels showed that constitutive exons are conserved among different species of the same phylum, while alternative exons are not.<sup>78</sup> Across phyla, some sites of the *slo1* gene appear to be more susceptible to alternative splicing than others, thus suggesting a convergent evolution at this level.<sup>78</sup> A major determinant of splicing in BK channels is the STREX complex (stress-axis hormone-regulated exon) that changes the

ability of the channel to respond to calcium, oxidation and phosphorylation shifts.<sup>79,80</sup> It is worth noting that alternative splicing of the *slo1* gene is critical in determining the localization of the BK channel in the plasma membrane or in intracellular organelles.<sup>81,82</sup> Interestingly, it is yet to be known whether the α subunit of intracellular BK channels is associated with auxiliary subunits and, if it were, the question would arise as to what auxiliary subunits are involved.<sup>82</sup>

Another important question is how interaction among alternative exons regulates BK channel function. An attempt to answer this question was made taking advantage of the worm *Caenorhabditis elegans*.<sup>83,84</sup> The *C. elegans* BK channel gene has only 3 sites for alternative splicing (A, B, and C), and encodes 12 splice variants.<sup>83</sup> The splice site enable the insertion of exons encoding part of the RCK1 (exons A1 and A2) and sections of the RCK1-RCK2 linker (exons B0, B1, B2, C0, and C1). Functional studies of all isoforms show that the A1 and A2 exons regulate channel gating kinetics and Ca<sup>2+</sup>sensitivity but only if alternate exons are inserted in sites B or C. For example, a shift of about 40 mV in the voltage dependence arises if the variant (A1; B0; C1) is expressed compared with (A2; B1; C0). The biophysical properties of these splice variants, plus eventually co-expression with auxiliary proteins, could prove to be essential for some physiological processes, such as voltage shift of that magnitude alters behavior and decrease synaptic transmission.<sup>85,86</sup>

### Post-translational modifications

Most post-translational modifications described in BK channels are related to the addition of hydrophobic groups for membrane localization. Palmitoylation of BK channels has been reported to be critical for PKA inhibition to occur in these channels.<sup>87</sup> This modification could regulate BK channel localization and its modulation by other proteins.<sup>88,89</sup> Particularly, the S0-S1 linker palmitoylation appears to be fundamental to plasma membrane localization.<sup>88</sup> The molecular determinants for  $\alpha$  subunit palmitoylation have been located in a polybasic domain upstream of palmitoylated cysteine residues in splice variants of the C-terminal region of the channel. Mutations of residues in this polybasic domain prevents palmitoylation, thus generating a reduction in the channel's voltage sensitivity.<sup>90</sup>

BK channels are also modulated by strong and reversible protein phosphorylation in native tissues. The phosphorylation by cAMP-dependent protein kinase (PKA) activates BK channels in smooth muscle cells and neurons, but inhibits channel activity in anterior pituitary cells.<sup>91-95</sup> This diversity of PKA actions is due to a differential regulation of different splice variants of the BK channel by phosphorylation. PKA has shown to activate BK channel formed by  $\alpha$  subunits that lacks the stress-regulated exon (STREX) and inhibits homotetramers formed by  $\alpha$  subunits containing the STREX exon.<sup>96,97</sup> The increase in BK channel activity is mediated by direct phosphorylation of serine 869 (serine 899 in some isoforms) in the C terminus, in which the phosphorylation of all four serine 869 residues in the tetrameric channel is required. PKA-mediated phosphorylation of a single serine residue of the STREX insert leads to channel inhibition independent of the presence of serine 869.<sup>96,97</sup> On the other hand, PKC inhibits BK channel activity and Src has been reported to increase channel activity (for a review see ref. 98).<sup>98</sup> The exhaustive study performed by Yan et al., showed the presence of 30 Ser/thr phosphorylation sites, 23 of which are located in the C terminus and 4 are found on splice insertions.<sup>99</sup>

### BK Channel Auxiliary Subunits

#### $\beta$ -subunits

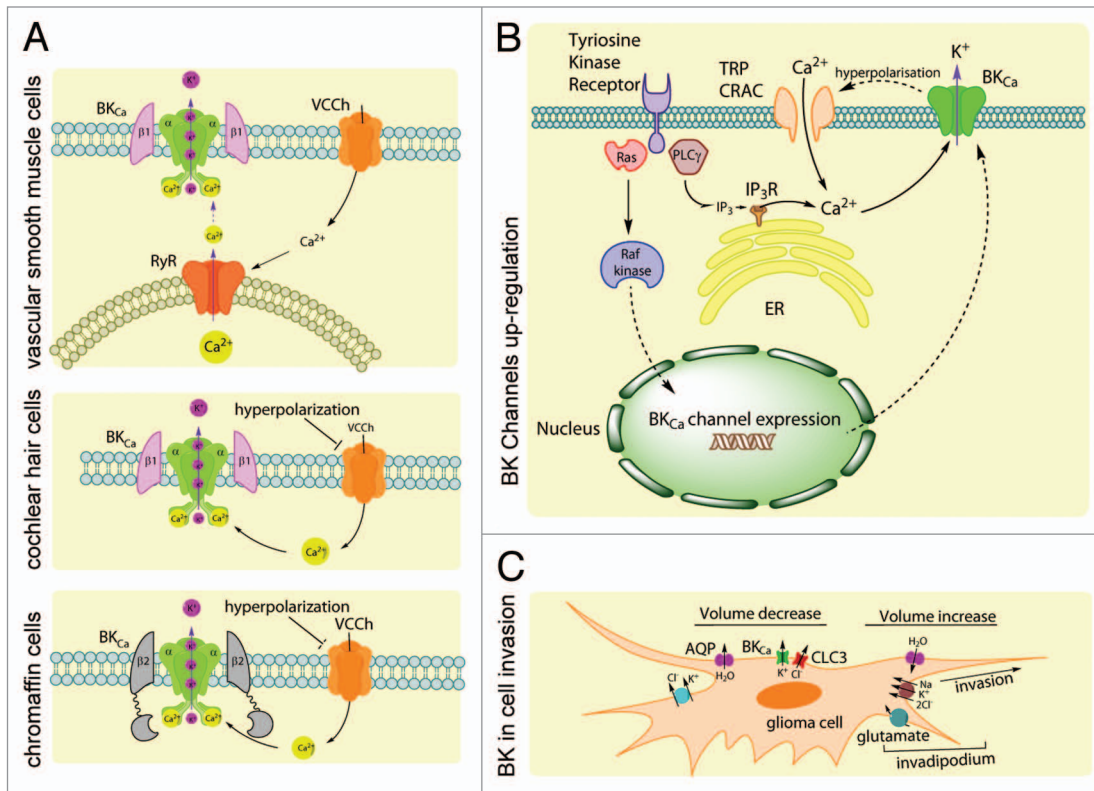
Four types of  $\beta$  auxiliary subunits of the BK channel have been identified thus far in mammals. All of them share a similar predicted topology, containing 2 transmembrane segments called TM1 and TM2, short intracellular N and C-terminal regions, and an extracellular loop of about 100 amino acids containing four cysteines.  $\beta_1$ ,  $\beta_2$ , and  $\beta_3$  exhibit high degrees of homology, whereas  $\beta_4$  is genetically more distant from all  $\beta$  subunits. Although to a different degree,  $\beta$  subunits can modify  $\text{Ca}^{2+}$  sensitivity, voltage dependence and gating properties of BK channels (Fig. 2). It has been estimated that the most likely stoichiometry in which  $\alpha$  and  $\beta$  subunits interact is that of one  $\beta$  subunit per  $\alpha$  subunit.<sup>100</sup> Despite the breadth and depth of BK channel research, some important questions remain unanswered with regards to how BK channels interact in native systems, such as the following: (1) are there BK channels with less than 4  $\beta$  subunits in native cells?; (2) do different types of  $\beta$  subunits co-exist in the same channel? In some tissues more than 1 type

of  $\beta$  subunits are present.<sup>101,102</sup> Hence, the overall question that arises is whether subunit heterogeneity could eventually be an additional source of functional diversity.

The main site of surface interaction between  $\alpha$  and  $\beta$  subunits appears to involve the S0 segment of the  $\alpha$  subunit.<sup>103</sup> There have been experiments in which amino acids in the TM1 and TM2 segments of the  $\beta$  subunits as well as in different transmembrane segments of the  $\alpha$  subunit were substituted by cysteines. These experiments showed that cross-linking between TM2 and S0 occurs with high efficiency; whereas TM1 crosslinks with S1 and S2 occur to same extent.<sup>104,105</sup> Co-immunoprecipitation experiments and TOXCAT assays with the  $\beta_2$  subunit have suggested that TM1 binds to the S1  $\alpha$  subunit segment.<sup>106</sup> Consequently, S0, S1, and S2, which are part of the VSD in BK channels, appear to interact with the TM1 and TM2 segments of the  $\beta$  subunits. These interactions suggest that conformational changes of the VSD during channel activation would be influenced by the presence of  $\beta$  subunits and could be the cause of the  $\beta_1$ ,  $\beta_2$  and  $\beta_4$  effects on gating currents (see Fig. 2).

Early studies using *Xenopus* oocytes as expression system showed that the  $\beta_1$  subunit induces an increase in apparent sensitivity to  $\text{Ca}^{2+}$ , a decrease in voltage dependence, and a deceleration of the macroscopic kinetics of  $\alpha$  subunits in BK channels.<sup>64,107,108</sup> The  $\beta_1$  subunit also modifies the pharmacological properties of the channel, such sensitivity to alcohols,<sup>109</sup> estrogens,<sup>110</sup> and omega-3 polyunsaturated fatty acids.<sup>111</sup> The affinity of scorpion toxins to BK channels is also increased by the  $\beta_1$  subunit and its presence is needed for internal binding to the channel opener dehydrosoyasaponin-I (DHS-1).<sup>112,113</sup> The  $\beta_1$  subunit is encoded by the *kcnmb1* gene, which is located in chromosome 5q35.1 in the *Homo sapiens*. This subunit is mainly expressed in vascular smooth muscles, but it is also found in the urinary bladder and in some regions of the brain (see Table 2).

The  $\beta_2$  subunit, encoded by the *kcnmb2* gene, also increases  $\text{Ca}^{2+}$  and voltage sensitivity, slows down kinetics,<sup>65,114-116</sup> and induces a fast and complete inactivation of BK channels.<sup>115,117</sup> The N-terminus of the  $\beta_2$  subunit (residues 1 to 45) blocks the BK channel by interacting with a receptor site in the  $\alpha$  subunit, which becomes accessible once the channel is in the open state.<sup>115,117,118</sup> The 3D structure of the  $\beta_2$  subunit N-terminus was established by NMR.<sup>119</sup> The structural analysis of the first 45 amino acids of the N-terminus shows that it consists of 2 well-defined domains connected by a flexible linker (see Fig. 3A, lower). Residues 1 to 17 form the so-called "ball domain," and residues 20 to 45 generate the "chain" and, thus, provide a structural explanation to  $\beta_2$ -mediated BK channel inactivation. Fluorescent labeling of BK channels formed by  $\alpha$  and  $\beta_2$  subunits has shown that  $\beta_2$  expression results in a shift of the F-V curve toward more negative membrane potentials, which is consistent with the shift promoted in the G-V activation curve.<sup>114</sup> F-V curves from BK channels carrying a fluorescence probe in the VSD domain are shifted due to the co-expression of the  $\beta_2$  subunit, which is independent from the presence of the N-terminal inactivating gate. This result suggest that in  $\alpha/\beta_2$  channels, interaction does not produce VSD charge immobilization, as in the case of Shaker  $\text{K}^+$  channels, where N-type inactivation produces sharp charge



**Figure 3.** Proposed role of BK in physiology and pathology. **(A)** Cartoon representation of  $\alpha$  and  $\beta$  subunits of BK channels co-expressed in vascular smooth muscles (upper), cochlear hair cells (middle) and chromaffin cells (lower). In VSM cells  $\beta 1$  subunits confer calcium sensitivity during the coupling of calcium sparks and outward currents. In chromaffin cells  $\beta 2$  subunits induce deceleration in BK current deactivation, consequently producing repeated firing in cells. In auditory hair cells, co-expression with  $\beta 2$  allows to tune the cells in a characteristic firing frequency. **(B)** BK channel expression has been found to be upregulated in tumors, such as prostate, glioma, and astrocyte cancer types, thus correlating with cell proliferation and malignancy coupled to calcium signaling and protein kinase activation. **(C)** BK channels play an active role in volume changes during cell invasion, acting in orchestration with other transporters and channels. The expression of these channels is relevant in glioma cells, because they migrate long distances through the brain.

immobilization.<sup>114</sup> However, this result may also be interpreted differently, considering that only half of the gating charges are located in the S4 segment, and that only 1 charge present in this segment (i.e., R213) suffers displacement during activation. This would be contrary to what has been observed in the Shaker K<sup>+</sup> channel, where 4 positively charged residues move across the entire electric field.  $\beta 2$  also induces an instantaneous outward rectification, suggesting that the  $\beta 2$  external loop approaches the BK pore in order to alter the  $\alpha$  subunit ion conduction features.<sup>116</sup> It is worth noting that the N-terminus of  $\beta 2$  prevents the surface expression of this subunit and hinders the surface expression of the  $\alpha$  subunit by stimulating endocytosis.<sup>120</sup> This fast inactivation by  $\beta 2$  appears to be responsible for the fast inactivating phenotype of BK channels in chromaffin cells and CA1 hippocampal neurons.<sup>121,122</sup> At least 2 splice variants of this  $\beta$  subunit have been identified in the pancreas and are known as  $\beta 2a$  and  $\beta 2b$ . Splice variant  $\beta 2b$  does not confer inactivation to BK channels and it yields currents almost identical to those observed from the  $\alpha$  subunit alone.<sup>123</sup>  $\beta 2b$  is the predominant variant in the pancreas and is also present in kidneys, spleen, adrenal chromaffin cells, dorsal root ganglia, and brain (see Table 2).

The  $\beta 3$  subunit was cloned and expressed by 3 different groups, thus identifying 4 splice variants (*a* to *d*).<sup>116,124,125</sup> Unlike  $\beta 1$  and  $\beta 2$ , none of the  $\beta 3$  subunits were observed to alter calcium sensitivity or voltage dependence of the  $\alpha$  subunit.<sup>116</sup> Of the 4 splicing variants, only *a*, *b*, and *c* induced partial inactivation.<sup>116,126,127</sup> Albeit incomplete, this inactivation is faster than the one induced by the  $\beta 2a$  subunit. Although to a small degree, the  $\beta 3b$  subunit consistently seems to speed activation at low Ca<sup>2+</sup> concentrations and produce an inward rectification of BK channel currents, which is regulated by the extracellular segment of this subunit.<sup>126</sup> The N-terminal region of  $\beta 3$ , which is related to BK channel inactivation, seems to be non-conserved among different species.<sup>128</sup> The gene encoding this subunit in *Homo sapiens* is *kcmb3* and it is located quite close to *kcmb2* in chromosome 3q26.3-q27. This subunit is expressed in adrenal chromaffin cells, kidneys, the heart, spleen, lung, liver, testis, and other tissues (see Table 2).

The human  $\beta 4$  subunit was cloned almost at the same time as  $\beta 3$ <sup>124,125</sup> and its sequence is more distantly related to the other  $\beta$  subunits.<sup>124,129</sup>  $\beta 4$  has been seen to alter calcium sensitivity of the channel in a complex manner.<sup>124,130</sup> At low Ca<sup>2+</sup> concentrations, this subunit decreases apparent Ca<sup>2+</sup> sensitivity, but increases it at

high  $\text{Ca}^{2+}$  concentrations. This has been observed as a reduction in open probability compared with the  $\alpha$  subunit alone at low  $\text{Ca}^{2+}$  concentrations and as a rise in open probability at high  $\text{Ca}^{2+}$  concentrations when the subunit is present.<sup>124,130,131</sup>  $\beta 4$  also slows down kinetic activation and deactivation, allowing for a more prolonged control over repolarization after the depolarization of the plasma membrane. This property is observed in the brain as a reduction of dentate gyrus excitability and protection against seizures,<sup>132</sup> and seems to be related to phosphorylation-dependent changes.<sup>133</sup> Palmitoylation of the  $\beta 4$  subunit in the amino acid residue C193 of the  $\beta 4$  C-terminus has been observed to regulate the expression of BK splice variants containing the putative trafficking motif REVEDEC in the C-terminus of the  $\alpha$  subunit.<sup>80,134</sup> Despite these actions, the  $\beta 4$  subunit is able to downregulate the surface expression of BK channels in brain.<sup>135</sup> This subunit is responsible for some of the features that are unique to neuronal BK channels, such as low affinity to scorpion toxins and sensitivity to ethanol.<sup>129,136</sup> It is important to note that the effects of ethanol over the BK features also depend on the location of the channel in different neuronal compartments. For example, in the nucleus accumbens, which is a brain area known to be involved in addiction, somatic channels (but not dendritic BK channels) increase the open probability that is governed by compartmentalized  $\beta 4$  expression in somas.<sup>137</sup> Similar effects were also observed in the hypothalamic-neurohypophysial system, where  $\beta 1$  expression predominates and where channels in the soma and dendritic compartments are insensitive to IbTx, in contrast to those found in the nerve terminal ( $\beta 4$  expression is higher in nerve terminals). In addition, these channels are highly activated by ethanol.<sup>138</sup> Accordingly, spiny neurons isolated from mice, showed low tolerance to alcohol, but cells derived from  $\beta 4$  knockout mice exhibit chronic tolerance to ethanol, even at the behavioral level.<sup>139</sup>  $\beta 4$  is expressed almost exclusively in the brain, but it has also been found in kidneys and genito-urinary smooth muscles (see Table 2).<sup>140,141</sup> The *kcnmb4* gene encodes the  $\beta 4$  subunit in humans and is located in chromosome 12q15.

Previous studies revealed that the modulation of the apparent  $\text{Ca}^{2+}$  sensitivity mediated by the  $\beta 1$  subunit was not due to an increase of the affinities of the  $\text{Ca}^{2+}$ -binding sites, but rather to a  $\text{Ca}^{2+}$ -independent effect.<sup>142,143</sup> These studies suggested that  $\beta 1$  alters the BK voltage-sensing properties. Measurements of gating currents in the BK channel  $\alpha$  subunit alone or in combination with different types of  $\beta$  subunits revealed that  $\beta 1$ ,  $\beta 2$  and  $\beta 4$  stabilize the voltage sensor in its active conformation, whereas  $\beta 3$  has no effect on voltage sensor equilibrium.<sup>64,65,144</sup> It has been recently proposed that coupling between  $\alpha$  and  $\beta$  subunits is mediated by electrostatic forces between the following three interaction sites: (1) a PI site that accounts for pre-inactivation; (2) an E site, which enhances  $\text{Ca}^{2+}$  sensitivity of the  $\alpha$  subunit; (3) and an ECaB site, which couples the  $\alpha$  subunit  $\text{Ca}^{2+}$  bowl to the gating process through the  $\beta 2$  subunit.<sup>145</sup> According to these results, the binding energy between the  $\alpha$  and  $\beta 2$  subunits is mainly electrostatic, suggesting a close interaction between the  $\beta 2$  subunit extracellular loop with the pore gate and the voltage sensor in the  $\alpha$  subunit.

It should be highlighted that  $\beta$  subunits may also bind to other members of the Slo family. In fact, Slo3 has been found to be able to bind to the  $\beta 4$  subunit.<sup>146</sup> However, although all 4  $\beta$  subunits are able to co-assemble with the Slo3 channel, only  $\beta 4$  has been observed to produce significant changes in the surface expression of the Slo3 channel.

In summary, 4 different auxiliary  $\beta$  subunits are expressed in mammalian tissues. A functional conserved domain among  $\beta 1$ ,  $\beta 2$ , and  $\beta 4$  subunits stabilize the active configuration of the channels, while increasing the energy barrier that separates closed from open states.<sup>147</sup> The importance of the  $\beta$  subunits is not only related to the modulation of  $\text{Ca}^{2+}$  sensitivity and voltage-dependent gating of the  $\alpha$  subunit, but also to the fact that they act as a target “sites/receptors” for different agents that could modulate BK channel function, such as protein, toxins, blockers or openers. Consequently, their significance is also related to channel trafficking and expression in cellular surface. These subunits also play a critical role as receptors for estrogens and steroids.<sup>110</sup> The BK channel responds to steroids in a manner that does not only depend on the nature of the ligand, but also on the type of  $\beta$  subunit associated to the channel.<sup>148</sup> Lipids like omega 3 polyunsaturated fatty acids with vasoactive properties have also been shown to activate BK channels in a  $\beta$  subunit-dependent manner.<sup>111</sup>

#### $\gamma$ subunits

In addition to  $\beta$  subunits, there are other auxiliary subunits that have been described in terms of their ability to modulate BK channel  $\alpha$  subunits, which are known as  $\gamma$  subunits. Pioneers in the study of these subunits are Yang and Aldrich, who identified conserved leucine-rich repeat proteins (LRRs) that can dramatically modify BK channel activation features.<sup>149,150</sup> The first  $\gamma$  subunit described was LRR26 ( $\gamma 1$ ), which induces a  $\text{Ca}^{2+}$ -independent leftward shift of  $\sim 140$  mV in the opening probability vs. voltage curve, with  $V_h$   $\sim 18$  mV.<sup>150</sup> Within the framework of Horrigan’s model for BK channel activation, this result can be interpreted as  $\gamma$  subunits improving coupling between the activation of the voltage-sensor and channel opening. Several paralogous proteins of LRR26 ( $\gamma 1$ ), such as LRR52 ( $\gamma 2$ ), LRR55 ( $\gamma 3$ ) and LRR38 ( $\gamma 4$ ), have been identified.<sup>150</sup> Although all  $\gamma$  subunits have been seen to modify  $V_h$  values for BK channel activation, their effects extend to different degrees, thus being LRR26 ( $\gamma 1$ ) and LRR52 ( $\gamma 2$ ) the subunits that cause greater effects.<sup>150</sup> Thus far,  $\gamma$  and  $\beta$  subunits do not appear to co-assemble at the same time with  $\alpha$  subunits. The LRR52 ( $\gamma 2$ ) subunit has also been found to interact with other Slo channels, like Slo3 in testis.<sup>151</sup>

### Endogenous Signaling Molecules

Several small endogenous molecules such as heme, carbon monoxide and oxygen reactive species are able to modulate BK channels (for an excellent review see ref. 150).<sup>152</sup> In particular, haem, a stable protein prosthetic group acutely modulates BK channels and it does so by binding to CKACH sequence located in the linker that join together the RCK1 and RCK2 domains.<sup>153-155</sup> It has been suggested that interaction of heme with the RCK1-RCK2 linker may expand the gating ring, hindering



the interactions between the ring and the voltage sensor domain that occur during BK channel activation.<sup>156</sup> Although the physiological role of heme binding to BK is still unclear, its binding is modulated by the redox state of the cell suggesting that the channel activity can be widely different in hypoxic and normoxic conditions.<sup>157</sup>

### BK Channel Pharmacology: Blockers and Openers

Slo1 channels have been observed to be blocked by the scorpion toxins ChTx and by the highly selective IbTX.<sup>20,158</sup> These scorpion toxins act as pore blockers occluding conduction pathways of the  $\alpha$  subunit in BK channels. A positively charged side chain of lysine 27 in ChTx has been identified as the blocking particle in the molecule.<sup>159</sup> In addition, a quite potent blocker isolated from scorpions is known as kaliotoxin, which inhibits BK channel opening with a  $K_D$  of approximately 20 nM.<sup>160</sup> Paxilline is another high-affinity blocker of the channel, which is a tremorgenic mycotoxin that has been described as an extremely potent BK channel blocker with a  $K_D$  also in the nM range.<sup>161</sup> BK channels are also very sensitive to the administration of tetraethylammonium in the extracellular side of the channel, with  $K_D$  ~250  $\mu$ M.<sup>162-164</sup> This high sensitivity is due to the presence of a phenylalanine ring in the boundaries of the external mouth of the selectivity filter.<sup>165,166</sup>

Furthermore, a number of BK channel *openers* have been identified, including the synthetic benzimidazolone derivative NS1619, and the natural modulator dihydrosoyasaponin.<sup>167</sup> It is worth mentioning that the compound NS11021 is a Slo1 channel activator that has shown to have better specificity and 10 times higher potency compared with NS1619, which is one of the most broadly applied Slo1 openers.<sup>168</sup>

### BK Channels in Smooth Muscles

The main function of BK channels in vascular physiology is to reduce contractile responses to excitatory stimuli by increasing in the concentration of intracellular  $Ca^{2+}$ . Myogenic tone control, vasorelaxation induced by  $Ca^{2+}$  sparks, endothelial factors or exogenous and endogenous vasoactive agonists also involve BK channel activation.<sup>169-172</sup>

There are numerous reports indicating that BK channels participate in the endothelium-dependent hyperpolarization of vascular smooth muscle cells, for which nitric oxide (NO) appears to be an important BK channel activator.<sup>173</sup> NO activation of BK channels is linked to cGMP-activated kinases.<sup>174,175</sup> NO is produced by endogenous synthases like eNOs in endothelia.<sup>176</sup> Other endothelium-derived factors, such as cytochrome P450-derived epoxyeicosatrienoic acids, prostacyclin and lipoxygenase derivatives produce the relaxation of smooth muscle cells by activating BK channels.<sup>177</sup>

Additionally, redox agents such as  $H_2O_2$ , have also been shown to have an inhibitory effect on BK channels by decreasing their open probability.<sup>178</sup> The inhibitory action of reactive oxygen species (ROS) has been compared with  $\beta$ 1 function impairment.<sup>179</sup> However, the  $\beta$ 1 subunit enhances the ability of

oxidative regulation of the BK channel.<sup>180</sup> In general, CO is a potent BK channel activator composed of vascular myocytes and carotid body glomus cells. It has been suggested that a motif in the BK C-terminal region is a binding region for CO, promoting its gating changes independently of redox changes (an excellent review on endogenous signaling molecules that modulate BK activity can be read in Hou et al., 2009).<sup>152</sup>

BK channels work as transducers and coupling agents between the endothelium and vascular smooth muscles, communicating diverse chemical signals generated in the endothelium to the vascular smooth muscle tone, thus controlling blood vessel caliber and flow.<sup>181</sup> BK channel activation in smooth muscles is tightly related to endothelium activity through NO/cGMP-dependent protein kinase I (PKG).<sup>182</sup> This has profound implications in many tissues and organs, where smooth muscle activity plays important roles in regulating pressure, volume and flow. **Figure 3A** shows a general view of BK in smooth muscle physiology.

#### Other types of smooth muscle cells

BK channels are also important in other kinds of smooth muscle cells. In the uterus, for instance, they participate in the control of myometrial cell membrane potentials,<sup>183</sup> their expression being under hormonal control.<sup>184</sup> Thus, a significant downregulation of the BK  $\alpha$  subunit is observed in rat myometrium at the end of pregnancy, likely enhancing the myometrial excitability needed during labor and parturition.<sup>184</sup>

As in vascular smooth muscles, BK channels can regulate the tone and contractility of airway smooth muscles by providing a negative feedback mechanism. In human bronchial smooth muscle cells, these channels also participate in maintaining resting membrane potential.<sup>185</sup> Although BK channels are present in rat bronchial smooth muscle cells, they do not seem to contribute to resting membrane potentials or participate in excitation responses.<sup>186</sup>

Gastrointestinal motility is another physiological function involving BK channels, for which they appear to be particularly important in the regulation of colonic motility. In the colonic longitudinal layer, these channels are involved in setting membrane potential and determining excitability. In the circular layer, on the other hand, they do not underlie basal electrical activity, but limit the responses to excitatory agonists.<sup>187</sup>

In urinary bladder smooth muscle cells, BK channels play a critical role in regulating their excitability and contractility. In these cells, BK currents are activated by  $Ca^{2+}$  sparks originating from  $Ca^{2+}$  release mediated by ryanodine receptors (RyRs) that are present in the sarcoplasmic reticulum.<sup>188</sup> A similar mechanism has been observed in cerebral arteries.<sup>189</sup> The modulation of BK channel activity by spontaneous  $Ca^{2+}$  sparks is known as spontaneous transient outward current (STOC).<sup>190</sup>

Membrane potential profoundly alters the coupling strength of  $Ca^{2+}$  sparks in BK channels. As an explanation for this, it has been proposed that calcium and voltage dependence of the sparking BK currents is modulated.<sup>191</sup> Furthermore, a similar coupling mechanism between  $Ca^{2+}$  sparks and BK channel activity was demonstrated in gallbladder myocytes.<sup>192</sup> Thus, inhibition and/or downregulation of BK channels could be the

cause of smooth muscle cell contractility alteration, as found in urinary bladder overactivity.<sup>193</sup>

In brief, despite tissue and interspecies diversity, a general behavior can be observed as a common factor for BK contribution to cell physiology. This has profound implications in many tissues and organs where smooth muscle activity plays an important role in regulating pressure, volume and flow. Finally, changes in the activity or expression of BK channels are related to cardiovascular pathological states, as will be discussed below.

### BK Channels in Hair Cells

In the cochlea the sound sensitive region resides in the basilar membrane in the organ of Corti. Is in this membrane where the hair cells, the sound sensitive cells, reside. In frog, chick, and turtle, used as models of this sense, frequency tuning is performed almost exclusively in these cells. Hair cells are arranged tonotopically and show a gradual change in oscillation frequency that correspond to the cell's tonotopic location.<sup>194-196</sup> The oscillation in membrane potential appears as a consequence of the interplay of an inward  $\text{Ca}^{2+}$  current and an outward  $\text{K}^{+}$  current. In hair cells BK currents are activated by an increase in internal  $\text{Ca}^{2+}$  concentration brought about by the opening of L-type voltage-dependent  $\text{Ca}^{2+}$  channels (VDCC) that colocalize with BK channels (Fig. 3A).<sup>36,37</sup> Activation of BK channels hyperpolarizes the cell, closing VDCC, thus promoting the membrane potential oscillation. Subsequent membrane voltage oscillations are damped, because as VDCC channels close, fewer BK channels are recruited in each cycle. The combination between the number and type of BK channel in each sensory cell, control the resonant frequency of a particular hair cell. The origin of the wide range of BK gating kinetics along the tonotopic map is still under debate. The presence of many different BK splice variants changing along the tonopic axis led to the hypothesis that this was the origin of the changes in gating kinetic properties of the channel.<sup>197-199</sup> However, due to their limited range of relaxation time constants of the BK splice variants found in hair cells, the splice variant hypothesis appear to be part of but not all the story.<sup>200,201</sup> As discussed earlier in this review, other means of altering BK function is the co-expression of  $\alpha$  and  $\beta$  subunits. The presence of different alternative splice variants, together with a differential expression of  $\beta 1$  subunit has been proposed to be the main mechanism that generates the cochlear tonotopic gradient.<sup>201,202</sup> Actually, a gradient in the expression of the  $\beta 1$  subunit slows BK channel kinetics toward the low-frequency apex of the cochlea.<sup>203</sup> More recently, it was found that the  $\beta 4$  subunit is also expressed in a gradient along the tonopic axis of the basilar membrane.  $\beta 4$  is preferentially expressed in the apical end of the basilar papilla suggesting that this subunit may also play an important role in the hair cell electrical behavior.<sup>102</sup>

### BK Channels and Diseases, Pathophysiological and Genetic Involvement

In humans, alterations in BK channels are known to be important in the pathophysiology of hypertension,<sup>204,205</sup> asthma,<sup>206</sup>

diabetes, and vascular insulin secretion,<sup>123,207</sup> epilepsy,<sup>208-210</sup> and cancer.<sup>211,212</sup> In this section we will briefly discuss some of these findings that link BK channels with the diseases in which they play a major role.

#### BK channels and hypertension

BK channels are known to be essential regulators of blood pressure and tissue perfusion.<sup>213</sup> An important observation supporting this view is that knocking-out the  $\beta 1$  subunit gene yields an increment in arterial tone and blood pressure.<sup>214</sup> Since the  $\beta 1$  subunit increases the apparent calcium sensitivity of BK channels, its absence would reduce functional coupling to calcium sparks for BK channel activation, thus increasing muscle tone and blood pressure.<sup>214</sup>

Moreover, BK channel polymorphisms may be related to genetic forms of hypertension and cardiovascular diseases. Single-nucleotide polymorphisms (SNPs) that promote either "gain-of-function" or "loss-of-function" have been identified in both the  $\alpha$  and  $\beta 1$  subunits.<sup>215-217</sup> AE65K polymorphism in the  $\beta 1$  subunit diminishes the prevalence of severe hypertension as well as myocardial infarction.<sup>204,218</sup>

#### BK channels and diabetes

In diabetes mellitus there are several metabolic changes, some of which are reflected in BK channel function. Vessels in diabetics are a common target, and some of the effects described previously for vascular smooth muscles tend to increase or are modified due to the development of diabetes. The  $\beta 1$  subunit of BK channels is downregulated under diabetic conditions in several cells where BK is expressed, leading to alterations in intracellular  $\text{Ca}^{2+}$  sensitivity.<sup>219</sup> Furthermore, there is an increment of coronary heart disease in diabetics compared with normal subjects or to those that have other vascular diseases. It has been reported that one of the factors contributing to coronary dysfunction leading to coronary heart disease is related to the downstream regulation of  $\beta 1$  subunit channel expression in coronary arteries induced by diabetes.<sup>220</sup>  $\beta 1$  expression is also impaired in other alterations promoted by diabetes in the microvasculature, such as in diabetic retinopathy.<sup>207</sup> Other vessels affected by the downregulation of  $\beta 1$  expression in diabetes are those found in the brain, hence creating greater susceptibility to strokes.<sup>221</sup>

BK channels may also play a role in insulin secretion during diabetes, since they regulate action potential firing in pancreatic  $\beta$ -cells.<sup>222</sup> Splice variants of  $\beta 2$  subunits (i.e.,  $\beta 2a$  and  $\beta 2b$ ) have been observed to be expressed in the pancreas in experimental models as well as in patients with diabetes.<sup>123</sup> The predominant splice variant is  $\beta 2b$ , and the functional characteristics of  $\alpha$  subunit and  $\beta 2b$  complexes expressed in heterologous systems are almost identical to those of the  $\alpha$  subunit alone, lacking inactivation. This fact may explain alterations of insulin secretion by pancreas islets during diabetes.

#### BK channels and asthma

In the airway pathway, the  $\beta 1$  subunit seems to play a major role regulating BK channel sensitivity to intracellular  $\text{Ca}^{2+}$ .<sup>223</sup> Genetic studies in high-prevalence asthma populations are consistent with these findings.<sup>206</sup> Additionally, evidence that BK channels are sensitive to estrogen may explain gender susceptibility to asthma.<sup>224</sup>

### BK channels and kidney disease

In the kidney epithelia, BK impairment by different  $\beta$  subunits leads to hydrosaline retention and hypertension.<sup>225,226</sup> A common allelic variant for SNPs in hypertension is the E65K mutation in the  $\beta 1$  subunit, which increases basal glomerular filtration rate. It has been anticipated that profiling this SNP can contribute to the prognosis of progressive renal disease.<sup>227</sup> Besides the  $\beta 1$  subunits,  $\beta 2$  and  $\beta 4$  are also expressed in the kidney epithelial cells.<sup>140</sup> In podocytes, nephrin seems to organize BK channel expression at the surfaces of nearby cells.<sup>228</sup>

### BK channels and nervous system diseases

The activation of BK channels in the nervous system is related to the modulation of a number of physiological processes, like action potential firing and transmitter release,<sup>229,230</sup> and are the main effectors for the modulation of a wide range of neurotransmitters, including those that are involved in the pathogenesis of several neurological and psychiatric disorders. Genetic analyses of a human syndrome in which generalized epilepsy coexists with paroxysmal dyskinesia has uncovered a disease that causes mutations in the RCK domain of the  $\alpha$  subunit.<sup>208,210</sup> A highly conserved aspartate at position 434 appears to be replaced by a glycine mutation that leads to higher intracellular  $\text{Ca}^{2+}$  sensitivity and to the enhancement of BK currents in heterologous expression systems. These changes may lead to an overall increase in neuronal excitability as a consequence of faster repolarization of action potentials, allowing neurons to fire at faster rates to the point of producing generalized epilepsy and paroxysmal dyskinesia. At the single channel level, the missense mutation D434G increases BK channel open probability by spending less time in the long-lived closed state.<sup>231</sup> This mutation has also been important in understanding basic questions and issues, such as the link between  $\text{Ca}^{2+}$  sensitivity and BK channel opening enhancement. This is because this mutation is located in a cytosolic motif immediately following the activation gate in the S6 helix (known as AC region), which is thought to mediate allosteric coupling between  $\text{Ca}^{2+}$  binding and channel aperture. Other epileptogenic mutations are related to changes in the expression of the  $\alpha$  subunit. More specifically, these changes have been observed in the medial temporal lobe in epilepsy.<sup>232</sup>  $\beta 3$  subunit deletions have also been implicated in the genesis of epilepsy, particularly in the absence of seizures. It has been shown that a single base pair deletion in exon 4 of the *KCNMB3* gene (delA750) eliminates the last 21 amino acids of this subunit, thus altering BK channel inactivation.<sup>209</sup> Likewise, deletion of  $\beta 4$  subunits has also been linked to epilepsy, based on evidence of temporal lobe epilepsy in mice when such subunits are deleted. It is interesting to note that  $\alpha/\beta 4$  channels activate and deactivate slower than those composed by the  $\alpha$  subunit alone, allowing for better control of the firing processes in neurons.<sup>233</sup> Psychiatric diseases such as autism and mental retardation have also been linked to BK channel deficits.<sup>234</sup> Finally, BK channels are also major players for many sensory responses such as hearing. It has been shown that  $\alpha$  subunit deficiency can lead to progressive deafness in a similar way as it has been observed for *KCNQ4*.<sup>235</sup>

### BK channels and cancer

BK channels have been found to be one of the most frequent channels in tumor cell lines, such as prostate cancer, ovary

cancer, osteosarcoma, breast cancer, gliomas, meningiomas, and other brain tumors.<sup>236,237</sup> In non-excitabile cells, BK channels are important in functions such as cell proliferation, migration, and volume regulation.<sup>238</sup> BK channels act as effective transducers of changes in intracellular  $\text{Ca}^{2+}$  to signal proliferation and migration, which lead to invasive proliferations of the transformed cells (Fig. 3B and C).<sup>238</sup> In some cases, BK channels have also been found in the inner membrane of mitochondria, such as in some glioma culture cells.<sup>239</sup> Overexpression of BK channels, in particular of BK isoforms with enhanced  $\text{Ca}^{2+}$ -sensitivity, strongly correlate with the degree of malignancy observed in gliomas.<sup>211,240</sup> In breast cancer cells, BK channel expression has been shown to be related to cell cycle and division, correlating with high proliferation rates and malignant tumors.<sup>241,242</sup> BK channel expression has also been correlated with the production of metastasis in the brain (see Fig. 3C).<sup>212</sup> Amplifications of the BK channel gene have also been observed in many types of prostate cancers.<sup>243</sup> The study of BK channels in prostate cancer has shown that BK channels open at resting potentials and low intracellular  $\text{Ca}^{2+}$ ,<sup>244</sup> thus paving the way to find  $\gamma$  subunits.<sup>149</sup> Figure 3B and C shows a scheme of the role of BK channels in cell proliferation and migration that can be related to cancer malignancy.

## Conclusions and Future Perspectives

Since their discovery, BK channels have emerged as key players in many physiological and pathophysiological conditions, also posing exciting biophysical questions relating to the convergence of voltage and free intracellular  $\text{Ca}^{2+}$  in the opening of  $\text{K}^+$  channels during evolution. In essence, BK channels are unique molecular transducers that link intracellular signals with extracellular stimuli through the interplay of multiple tuning knobs that control signaling gain and timing, thus allowing for the correct physiological activity of cells, organs and tissues. Although the key components related to  $\text{Ca}^{2+}$  sensitivity and voltage-dependent gating have been amply explored, many questions remain unanswered from the molecular biophysics standpoint, as well as regarding the many pathophysiological issues where this channel is a relevant actor. Finally, it is worth noting that changes in the activity or expression of BK channels are linked to several pathophysiological disorders, such as cardiovascular illness states, cancer, diabetes and neurological diseases. This highlights the importance of accurately understanding how conduction may take place and how it can be modulated in order to find possible therapeutic interventions for these diseases.

### Disclosure of Potential Conflicts of Interest

No potential conflicts of interest were disclosed.

### Acknowledgments

This work was supported by FONDECYT Grants 1110430 (to Latorre R), 1120802 (to Gonzalez C), and 1120864 (to Neely A); ANILLO Grant ACT1104 (to Gonzalez C); the Chile-Argentina exchange grant 2011-665 CH/11/12 (to Milesi V and Gonzalez C) and grant for foreign research experts in Argentina (to Gonzalez C and Milesi V); CONICYT doctoral



fellowships (to Contreras GF); and the Doctoral Thesis Support Fellowship AT-24110157 (to Contreras GF). CSIC p944, the CSIC International Cooperation Program, Udelar-CINV-UV (to Ferreira G). The Centro Interdisciplinario de Neurociencia

de Valparaíso (The Interdisciplinary Center for Neuroscience in Valparaíso) is a Millennium Institute supported by the Millennium Scientific Initiative of the Chilean Ministry of Economy, Public Works, and Tourism.

## References

- Gardos G. The function of calcium in the potassium permeability of human erythrocytes. *Biochim Biophys Acta* 1958; 30:653-4; PMID:13618284; [http://dx.doi.org/10.1016/0006-3002\(58\)90124-0](http://dx.doi.org/10.1016/0006-3002(58)90124-0)
- Krnjevic K, Lisiewicz A. Injections of calcium ions into spinal motoneurons. *J Physiol* 1972; 225:363-90; PMID:5074394
- Heyer CB, Lux HD. Control of the delayed outward potassium currents in bursting pace-maker neurones of the snail, *Helix pomatia*. *J Physiol* 1976; 262:349-82; PMID:994042
- Meech RW, Standen NB. Potassium activation in *Helix aspersa* neurones under voltage clamp: a component mediated by calcium influx. *J Physiol* 1975; 249:211-39; PMID:1177091
- Brown AM, Ellory JC, Young JD, Lew VL. A calcium-activated potassium channel present in foetal red cells of the sheep but absent from reticulocytes and mature red cells. *Biochim Biophys Acta* 1978; 511:163-75; PMID:354695; [http://dx.doi.org/10.1016/0005-2736\(78\)90311-5](http://dx.doi.org/10.1016/0005-2736(78)90311-5)
- Hotson JR, Prince DA. A calcium-activated hyperpolarization follows repetitive firing in hippocampal neurons. *J Neurophysiol* 1980; 43:409-19; PMID:6247461
- Pallotta BS, Magleby KL, Barrett JN. Single channel recordings of Ca<sup>2+</sup>-activated K<sup>+</sup> currents in rat muscle cell culture. *Nature* 1981; 293:471-4; PMID:6273730; <http://dx.doi.org/10.1038/293471a0>
- Marty A. Ca-dependent K channels with large unitary conductance in chromaffin cell membranes. *Nature* 1981; 291:497-500; PMID:6262657; <http://dx.doi.org/10.1038/291497a0>
- Latorre R, Vergara C, Hidalgo C. Reconstitution in planar lipid bilayers of a Ca<sup>2+</sup>-dependent K<sup>+</sup> channel from transverse tubule membranes isolated from rabbit skeletal muscle. *Proc Natl Acad Sci U S A* 1982; 79:805-9; PMID:6278496; <http://dx.doi.org/10.1073/pnas.79.3.805>
- Latorre R, Miller C. Conduction and selectivity in potassium channels. *J Membr Biol* 1983; 71:11-30; PMID:6300405; <http://dx.doi.org/10.1007/BF01870671>
- Hamill OP, Marty A, Neher E, Sakmann B, Sigworth FJ. Improved patch-clamp techniques for high-resolution current recording from cells and cell-free membrane patches. *Pflugers Arch* 1981; 391:85-100; PMID:6270629; <http://dx.doi.org/10.1007/BF00656997>
- Rink TJ, Deutsch C. Calcium-activated potassium channels in lymphocytes. *Cell Calcium* 1983; 4:463-73; PMID:6323008; [http://dx.doi.org/10.1016/0143-4160\(83\)90022-2](http://dx.doi.org/10.1016/0143-4160(83)90022-2)
- Jenkinson DH, Haylett DG, Cook NS. Calcium-activated potassium channels in liver cells. *Cell Calcium* 1983; 4:429-37; PMID:6323005; [http://dx.doi.org/10.1016/0143-4160\(83\)90019-2](http://dx.doi.org/10.1016/0143-4160(83)90019-2)
- Hunter M, Lopes AG, Boulpaep EL, Giebisch GH. Single channel recordings of calcium-activated potassium channels in the apical membrane of rabbit cortical collecting tubules. *Proc Natl Acad Sci U S A* 1984; 81:4237-9; PMID:6330754; <http://dx.doi.org/10.1073/pnas.81.13.4237>
- Trautmann A, Marty A. Activation of Ca-dependent K channels by carbamoylcholine in rat lacrimal glands. *Proc Natl Acad Sci U S A* 1984; 81:611-5; PMID:6320199; <http://dx.doi.org/10.1073/pnas.81.2.611>
- Berger W, Grygorczyk R, Schwarz W. Single K<sup>+</sup> channels in membrane evaginations of smooth muscle cells. *Pflugers Arch* 1984; 402:18-23; PMID:6095176; <http://dx.doi.org/10.1007/BF00584826>
- Bartschat DK, Blaustein MP. Calcium-activated potassium channels in isolated presynaptic nerve terminals from rat brain. *J Physiol* 1985; 361:441-57; PMID:2580982
- Orio P, Rojas P, Ferreira G, Latorre R. New disguises for an old channel: MaxiK channel beta-subunits. *News Physiol Sci* 2002; 17:156-61; PMID:12136044
- Salkoff L, Butler A, Ferreira G, Santi C, Wei A. High-conductance potassium channels of the SLO family. *Nat Rev Neurosci* 2006; 7:921-31; PMID:17115074; <http://dx.doi.org/10.1038/nrn1992>
- Miller C, Moczydlowski E, Latorre R, Phillips M. Charybdotoxin, a protein inhibitor of single Ca<sup>2+</sup>-activated K<sup>+</sup> channels from mammalian skeletal muscle. *Nature* 1985; 313:316-8; PMID:2578618; <http://dx.doi.org/10.1038/313316a0>
- Galvez A, Gimenez-Gallego G, Reuben JP, Roy-Contancin L, Feigenbaum P, Kaczorowski GJ, Garcia ML. Purification and characterization of a unique, potent, peptidyl probe for the high conductance calcium-activated potassium channel from venom of the scorpion *Buthus tamulus*. *J Biol Chem* 1990; 265:11083-90; PMID:1694175
- Elkins T, Ganetzky B, Wu CF. A *Drosophila* mutation that eliminates a calcium-dependent potassium current. *Proc Natl Acad Sci U S A* 1986; 83:8415-9; PMID:2430288; <http://dx.doi.org/10.1073/pnas.83.21.8415>
- Atkinson NS, Robertson GA, Ganetzky B. A component of calcium-activated potassium channels encoded by the *Drosophila* slo locus. *Science* 1991; 253:551-5; PMID:1857984; <http://dx.doi.org/10.1126/science.1857984>
- Adelman JP, Shen KZ, Kavanaugh MP, Warren RA, Wu YN, Lagrutta A, Bond CT, North RA. Calcium-activated potassium channels expressed from cloned complementary DNAs. *Neuron* 1992; 9:209-16; PMID:1497890; [http://dx.doi.org/10.1016/0896-6273\(92\)90160-F](http://dx.doi.org/10.1016/0896-6273(92)90160-F)
- Butler A, Tsunoda S, McCobb DP, Wei A, Salkoff L. mSlo, a complex mouse gene encoding "maxi" calcium-activated potassium channels. *Science* 1993; 261:221-4; PMID:7687074; <http://dx.doi.org/10.1126/science.7687074>
- Berkefeld H, Fakler B, Schulte U. Ca<sup>2+</sup>-activated K<sup>+</sup> channels: from protein complexes to function. *Physiol Rev* 2010; 90:1437-59; PMID:20959620; <http://dx.doi.org/10.1152/physrev.00049.2009>
- Wallner M, Meera P, Toro L. Determinant for beta-subunit regulation in high-conductance voltage-activated and Ca(2+)-sensitive K<sup>+</sup> channels: an additional transmembrane region at the N terminus. *Proc Natl Acad Sci U S A* 1996; 93:14922-7; PMID:8962157; <http://dx.doi.org/10.1073/pnas.93.25.14922>
- Schreiber M, Wei A, Yuan A, Gaut J, Saito M, Salkoff L. Slo3, a novel pH-sensitive K<sup>+</sup> channel from mammalian spermatocytes. *J Biol Chem* 1998; 273:3509-16; PMID:9452476; <http://dx.doi.org/10.1074/jbc.273.6.3509>
- Quirk JC, Reinhart PH. Identification of a novel tetramerization domain in large conductance K(Ca) channels. *Neuron* 2001; 32:13-23; PMID:11604135; [http://dx.doi.org/10.1016/S0896-6273\(01\)00444-5](http://dx.doi.org/10.1016/S0896-6273(01)00444-5)
- Wang L, Sigworth FJ. Structure of the BK potassium channel in a lipid membrane from electron cryomicroscopy. *Nature* 2009; 461:292-5; PMID:19718020; <http://dx.doi.org/10.1038/nature08291>
- Díaz L, Meera P, Amigo J, Stefani E, Alvarez O, Toro L, Latorre R. Role of the S4 segment in a voltage-dependent calcium-sensitive potassium (hSlo) channel. *J Biol Chem* 1998; 273:32430-6; PMID:9829973; <http://dx.doi.org/10.1074/jbc.273.49.32430>
- McManus OB, Magleby KL. Accounting for the Ca(2+)-dependent kinetics of single large-conductance Ca(2+)-activated K<sup>+</sup> channels in rat skeletal muscle. *J Physiol* 1991; 443:739-77; PMID:1822543
- Cox DH, Cui J, Aldrich RW. Allosteric gating of a large conductance Ca-activated K<sup>+</sup> channel. *J Gen Physiol* 1997; 110:257-81; PMID:9276753; <http://dx.doi.org/10.1085/jgp.110.3.257>
- Lee US, Cui J. BK channel activation: structural and functional insights. *Trends Neurosci* 2010; 33:415-23; PMID:20663573; <http://dx.doi.org/10.1016/j.tins.2010.06.004>
- Pérez GJ, Bonev AD, Nelson MT. Micromolar Ca(2+) from sparks activates Ca(2+)-sensitive K(+) channels in rat cerebral artery smooth muscle. *Am J Physiol Cell Physiol* 2001; 281:C1769-75; PMID:11698234
- Roberts WM, Jacobs RA, Hudspeth AJ. Colocalization of ion channels involved in frequency selectivity and synaptic transmission at presynaptic active zones of hair cells. *J Neurosci* 1990; 10:3664-84; PMID:1700083
- Issa NP, Hudspeth AJ. Clustering of Ca<sup>2+</sup> channels and Ca(2+)-activated K<sup>+</sup> channels at fluorescently labeled presynaptic active zones of hair cells. *Proc Natl Acad Sci U S A* 1994; 91:7578-82; PMID:8052623; <http://dx.doi.org/10.1073/pnas.91.16.7578>
- Berkefeld H, Sailer CA, Bildl W, Rohde V, Thumfart JO, Eble S, Klugbauer N, Reisinger E, Bischofberger J, Oliver D, et al. BKCa-Cav channel complexes mediate rapid and localized Ca<sup>2+</sup>-activated K<sup>+</sup> signaling. *Science* 2006; 314:615-20; PMID:17068255; <http://dx.doi.org/10.1126/science.1132915>
- Horrigan FT, Aldrich RW. Coupling between voltage sensor activation, Ca<sup>2+</sup> binding and channel opening in large conductance (BK) potassium channels. *J Gen Physiol* 2002; 120:267-305; PMID:12198087; <http://dx.doi.org/10.1085/jgp.20028605>
- Barrett JN, Magleby KL, Pallotta BS. Properties of single calcium-activated potassium channels in cultured rat muscle. *J Physiol* 1982; 331:211-30; PMID:6296366
- Schreiber M, Salkoff L. A novel calcium-sensing domain in the BK channel. *Biophys J* 1997; 73:1355-63; PMID:9284303; [http://dx.doi.org/10.1016/S0006-3495\(97\)78168-2](http://dx.doi.org/10.1016/S0006-3495(97)78168-2)
- Bao L, Rapin AM, Holmstrand EC, Cox DH. Elimination of the BK(Ca) channel's high-affinity Ca(2+) sensitivity. *J Gen Physiol* 2002; 120:173-89; PMID:12149279; <http://dx.doi.org/10.1085/jgp.20028627>
- Bao L, Kaldany C, Holmstrand EC, Cox DH. Mapping the BKCa channel's "Ca<sup>2+</sup> bowl": side-chains essential for Ca<sup>2+</sup> sensing. *J Gen Physiol* 2004; 123:475-89; PMID:15111643; <http://dx.doi.org/10.1085/jgp.200409052>



44. Bian X, Favre I, Moczydlowski E. Ca<sup>2+</sup>-binding activity of a COOH-terminal fragment of the *Drosophila* BK channel involved in Ca<sup>2+</sup>-dependent activation. *Proc Natl Acad Sci U S A* 2001; 98:4776-81; PMID:11274367; <http://dx.doi.org/10.1073/pnas.081072398>
45. Jiang Y, Pico A, Cadene M, Chait BT, MacKinnon R. Structure of the RCK domain from the *E. coli* K<sup>+</sup> channel and demonstration of its presence in the human BK channel. *Neuron* 2001; 29:593-601; PMID:11301020; [http://dx.doi.org/10.1016/S0896-6273\(01\)00236-7](http://dx.doi.org/10.1016/S0896-6273(01)00236-7)
46. Xia XM, Zeng X, Lingle CJ. Multiple regulatory sites in large-conductance calcium-activated potassium channels. *Nature* 2002; 418:880-4; PMID:12192411; <http://dx.doi.org/10.1038/nature00956>
47. Zeng XH, Xia XM, Lingle CJ. Divalent cation sensitivity of BK channel activation supports the existence of three distinct binding sites. *J Gen Physiol* 2005; 125:273-86; PMID:15738049; <http://dx.doi.org/10.1085/jgp.200409239>
48. Zhou Y, Zeng XH, Lingle CJ. Barium ions selectively activate BK channels via the Ca<sup>2+</sup>-bowl site. *Proc Natl Acad Sci U S A* 2012; 109:11413-8; PMID:22733762; <http://dx.doi.org/10.1073/pnas.1204444109>
49. Jiang Y, Lee A, Chen J, Cadene M, Chait BT, MacKinnon R. Crystal structure and mechanism of a calcium-gated potassium channel. *Nature* 2002; 417:515-22; PMID:12037559; <http://dx.doi.org/10.1038/417515a>
50. Yuan P, Leonetti MD, Pico AR, Hsiung Y, MacKinnon R. Structure of the human BK channel Ca<sup>2+</sup>-activation apparatus at 3.0 Å resolution. *Science* 2010; 329:182-6; PMID:20508092; <http://dx.doi.org/10.1126/science.1190414>
51. Ye S, Li Y, Chen L, Jiang Y. Crystal structures of a ligand-free MthK gating ring: insights into the ligand gating mechanism of K<sup>+</sup> channels. *Cell* 2006; 126:1161-73; PMID:16990139; <http://dx.doi.org/10.1016/j.cell.2006.08.029>
52. Pau VP, Smith FJ, Taylor AB, Parfenova LV, Samakai E, Callaghan MM, Abarca-Heidemann K, Hart PJ, Rothberg BS. Structure and function of multiple Ca<sup>2+</sup>-binding sites in a K<sup>+</sup> channel regulator of K<sup>+</sup> conductance (RCK) domain. *Proc Natl Acad Sci U S A* 2011; 108:17684-9; PMID:21997217; <http://dx.doi.org/10.1073/pnas.1107229108>
53. Dvir H, Valera E, Choe S. Structure of the MthK RCK in complex with cadmium. *J Struct Biol* 2010; 171:231-7; PMID:20371380; <http://dx.doi.org/10.1016/j.jsb.2010.03.020>
54. Wu Y, Yang Y, Ye S, Jiang Y. Structure of the gating ring from the human large-conductance Ca(2+)-gated K(+) channel. *Nature* 2010; 466:393-7; PMID:20574420; <http://dx.doi.org/10.1038/nature09252>
55. Javaherian AD, Yusifov T, Pantazis A, Franklin S, Gandhi CS, Olcese R. Metal-driven operation of the human large-conductance voltage- and Ca<sup>2+</sup>-dependent potassium channel (BK) gating ring apparatus. *J Biol Chem* 2011; 286:20701-9; PMID:21471215; <http://dx.doi.org/10.1074/jbc.M111.235234>
56. Miranda P, Contreras JE, Plested AJ, Sigworth FJ, Holmgren M, Giraldez T. State-dependent FRET reports calcium- and voltage-dependent gating-ring motions in BK channels. *Proc Natl Acad Sci U S A* 2013; 110:5217-22; PMID:23479636; <http://dx.doi.org/10.1073/pnas.1219611110>
57. Shi J, Cui J. Intracellular Mg(2+) enhances the function of BK-type Ca(2+)-activated K(+) channels. *J Gen Physiol* 2001; 118:589-606; PMID:11696614; <http://dx.doi.org/10.1085/jgp.118.5.589>
58. Hou S, Vigeland LE, Zhang G, Xu R, Li M, Heinemann SH, Hoshi T. Zn<sup>2+</sup> activates large conductance Ca<sup>2+</sup>-activated K<sup>+</sup> channel via an intracellular domain. *J Biol Chem* 2010; 285:6434-42; PMID:20037152; <http://dx.doi.org/10.1074/jbc.M109.069211>
59. Yang H, Shi J, Zhang G, Yang J, Delaloye K, Cui J. Activation of Slo1 BK channels by Mg<sup>2+</sup> coordinated between the voltage sensor and RCK1 domains. *Nat Struct Mol Biol* 2008; 15:1152-9; PMID:18931675; <http://dx.doi.org/10.1038/nsmb.1507>
60. Hu L, Shi J, Ma Z, Krishnamoorthy G, Sieling F, Zhang G, Horrigan FT, Cui J. Participation of the S4 voltage sensor in the Mg<sup>2+</sup>-dependent activation of large conductance (BK) K<sup>+</sup> channels. *Proc Natl Acad Sci U S A* 2003; 100:10488-93; PMID:12925732; <http://dx.doi.org/10.1073/pnas.1834300100>
61. Pallotta BS. N-bromoacetamide removes a calcium-dependent component of channel opening from calcium-activated potassium channels in rat skeletal muscle. *J Gen Physiol* 1985; 86:601-11; PMID:2415669; <http://dx.doi.org/10.1085/jgp.86.5.601>
62. Horrigan FT, Aldrich RW. Allosteric voltage gating of potassium channels II. Mslo channel gating charge movement in the absence of Ca(2+). *J Gen Physiol* 1999; 114:305-36; PMID:10436004; <http://dx.doi.org/10.1085/jgp.114.2.305>
63. Stefani E, Ottolia M, Noceti F, Olcese R, Wallner M, Latorre R, Toro L. Voltage-controlled gating in a large conductance Ca<sup>2+</sup>-sensitive K<sup>+</sup> channel (hsls). *Proc Natl Acad Sci U S A* 1997; 94:5427-31; PMID:9144254; <http://dx.doi.org/10.1073/pnas.94.10.5427>
64. Bao L, Cox DH. Gating and ionic currents reveal how the BKCa channel's Ca<sup>2+</sup> sensitivity is enhanced by its beta1 subunit. *J Gen Physiol* 2005; 126:393-412; PMID:16186565; <http://dx.doi.org/10.1085/jgp.200509346>
65. Contreras GF, Neely A, Alvarez O, Gonzalez C, Latorre R. Modulation of BK channel voltage gating by different auxiliary β subunits. *Proc Natl Acad Sci U S A* 2012; 109:18991-6; PMID:23112204; <http://dx.doi.org/10.1073/pnas.1216953109>
66. Cui J, Cox DH, Aldrich RW. Intrinsic voltage dependence and Ca<sup>2+</sup> regulation of mslo large conductance Ca-activated K<sup>+</sup> channels. *J Gen Physiol* 1997; 109:647-73; PMID:9154910; <http://dx.doi.org/10.1085/jgp.109.5.647>
67. Cui J, Aldrich RW. Allosteric linkage between voltage and Ca(2+)-dependent activation of BK-type mslo1 K(+) channels. *Biochemistry* 2000; 39:15612-9; PMID:11112549; <http://dx.doi.org/10.1021/bi001509+>
68. Ma Z, Lou XJ, Horrigan FT. Role of charged residues in the S1-S4 voltage sensor of BK channels. *J Gen Physiol* 2006; 127:309-28; PMID:16505150; <http://dx.doi.org/10.1085/jgp.200509421>
69. Savalli N, Kondratiev A, Toro L, Olcese R. Voltage-dependent conformational changes in human Ca(2+)- and voltage-activated K(+) channel, revealed by voltage-clamp fluorometry. *Proc Natl Acad Sci U S A* 2006; 103:12619-24; PMID:16895996; <http://dx.doi.org/10.1073/pnas.0601176103>
70. Samaranyake H, Saunders JC, Greene MI, Navaratnam DS. Ca(2+) and K(+) (BK) channels in chick hair cells are clustered and colocalized with apical-basal and tonotopic gradients. *J Physiol* 2004; 560:13-20; PMID:15272029; <http://dx.doi.org/10.1113/jphysiol.2004.069856>
71. Pantazis A, Olcese R. Relative transmembrane segment rearrangements during BK channel activation resolved by structurally assigned fluorophore-quencher pairing. *J Gen Physiol* 2012; 140:207-18; PMID:22802360; <http://dx.doi.org/10.1085/jgp.201210807>
72. Pantazis A, Kohanteb AP, Olcese R. Relative motion of transmembrane segments S0 and S4 during voltage sensor activation in the human BK(Ca) channel. *J Gen Physiol* 2010; 136:645-57; PMID:21078868; <http://dx.doi.org/10.1085/jgp.201010503>
73. Latorre R, Morera FJ, Zaelzer C. Allosteric interactions and the modular nature of the voltage- and Ca<sup>2+</sup>-activated (BK) channel. *J Physiol* 2010; 588:3141-8; PMID:20603335; <http://dx.doi.org/10.1113/jphysiol.2010.191999>
74. Horrigan FT, Cui J, Aldrich RW. Allosteric voltage gating of potassium channels I. Mslo ionic currents in the absence of Ca(2+). *J Gen Physiol* 1999; 114:277-304; PMID:10436003; <http://dx.doi.org/10.1085/jgp.114.2.277>
75. Lagrutta A, Shen KZ, North RA, Adelman JP. Functional differences among alternatively spliced variants of Slowpoke, a *Drosophila* calcium-activated potassium channel. *J Biol Chem* 1994; 269:20347-51; PMID:8051129
76. Xie J, McCobb DP. Control of alternative splicing of potassium channels by stress hormones. *Science* 1998; 280:443-6; PMID:9545224; <http://dx.doi.org/10.1126/science.280.5362.443>
77. Chen L, Tian L, MacDonald SH, McClafferty H, Hammond MS, Huibant JM, Ruth P, Knaus HG, Shipston MJ. Functionally diverse complement of large conductance calcium- and voltage-activated potassium channel (BK) alpha-subunits generated from a single site of splicing. *J Biol Chem* 2005; 280:33599-609; PMID:16081418; <http://dx.doi.org/10.1074/jbc.M505383200>
78. Fodor AA, Aldrich RW. Convergent evolution of alternative splices at domain boundaries of the BK channel. *Annu Rev Physiol* 2009; 71:19-36; PMID:18694345; <http://dx.doi.org/10.1146/annurev.physiol.010908.163124>
79. Erxleben C, Everhart AL, Romeo C, Florance H, Bauer MB, Alcorta DA, Rossie S, Shipston MJ, Armstrong DL. Interacting effects of N-terminal variation and stress exon splicing on slo potassium channel regulation by calcium, phosphorylation, and oxidation. *J Biol Chem* 2002; 277:27045-52; PMID:12016222; <http://dx.doi.org/10.1074/jbc.M203087200>
80. Petrik D, Brenner R. Regulation of STREX exon large conductance, calcium-activated potassium channels by the beta4 accessory subunit. *Neuroscience* 2007; 149:789-803; PMID:17945424; <http://dx.doi.org/10.1016/j.neuroscience.2007.07.066>
81. Zarei MM, Eghbali M, Alioua A, Song M, Knaus HG, Stefani E, Toro L. An endoplasmic reticulum trafficking signal prevents surface expression of a voltage- and Ca<sup>2+</sup>-activated K<sup>+</sup> channel splice variant. *Proc Natl Acad Sci U S A* 2004; 101:10072-7; PMID:15226510; <http://dx.doi.org/10.1073/pnas.0302919101>
82. Singh H, Stefani E, Toro L. Intracellular BK. Intracellular BK(Ca) (iBK(Ca)) channels. *J Physiol* 2012; 590:5937-47; PMID:22930268; <http://dx.doi.org/10.1113/jphysiol.2011.215533>
83. Johnson BE, Glauser DA, Dan-Glauser ES, Halling DB, Aldrich RW, Goodman MB. Alternatively spliced domains interact to regulate BK potassium channel gating. *Proc Natl Acad Sci U S A* 2011; 108:20784-9; PMID:22049343; <http://dx.doi.org/10.1073/pnas.1116795108>
84. Glauser DA, Johnson BE, Aldrich RW, Goodman MB. Intragenic alternative splicing coordination is essential for *Caenorhabditis elegans* slo-1 gene function. *Proc Natl Acad Sci U S A* 2011; 108:20790-5; PMID:22084100; <http://dx.doi.org/10.1073/pnas.1116712108>
85. Wang ZW, Saifee O, Nonet ML, Salkoff L. SLO-1 potassium channels control quantal content of neurotransmitter release at the *C. elegans* neuromuscular junction. *Neuron* 2001; 32:867-81; PMID:11738032; [http://dx.doi.org/10.1016/S0896-6273\(01\)00522-0](http://dx.doi.org/10.1016/S0896-6273(01)00522-0)

86. Chen B, Ge Q, Xia XM, Liu P, Wang SJ, Zhan H, Eipper BA, Wang ZW. A novel auxiliary subunit critical to BK channel function in *Caenorhabditis elegans*. *J Neurosci* 2010; 30:16651-61; PMID:21148004; <http://dx.doi.org/10.1523/JNEUROSCI.3211-10.2010>
87. Tian L, Jeffries O, McClafferty H, Molyvdas A, Rowe IC, Saleem F, Chen L, Greaves J, Chamberlain LH, Knaus HG, et al. Palmitoylation gates phosphorylation-dependent regulation of BK potassium channels. *Proc Natl Acad Sci U S A* 2008; 105:21006-11; PMID:19098106; <http://dx.doi.org/10.1073/pnas.0806700106>
88. Jeffries O, Geiger N, Rowe IC, Tian L, McClafferty H, Chen L, Bi D, Knaus HG, Ruth P, Shipston MJ. Palmitoylation of the S0-S1 linker regulates cell surface expression of voltage- and calcium-activated potassium (BK) channels. *J Biol Chem* 2010; 285:33307-14; PMID:20693285; <http://dx.doi.org/10.1074/jbc.M110.153940>
89. Zhou X, Wulfsen I, Korth M, McClafferty H, Lukowski R, Shipston MJ, Ruth P, Dobrev D, Wieland T. Palmitoylation and membrane association of the stress axis regulated insert (STREX) controls BK channel regulation by protein kinase C. *J Biol Chem* 2012; 287:32161-71; PMID:22843729; <http://dx.doi.org/10.1074/jbc.M112.386359>
90. Jeffries O, Tian L, McClafferty H, Shipston MJ. An electrostatic switch controls palmitoylation of the large conductance voltage- and calcium-activated potassium (BK) channel. *J Biol Chem* 2012; 287:1468-77; PMID:22084244; <http://dx.doi.org/10.1074/jbc.M111.224840>
91. Levitan IB. Modulation of ion channels by protein phosphorylation and dephosphorylation. *Annu Rev Physiol* 1994; 56:193-212; PMID:7516643; <http://dx.doi.org/10.1146/annurev.ph.56.030194.001205>
92. Lee K, Rowe IC, Ashford ML. Characterization of an ATP-modulated large conductance Ca(2+)-activated K+ channel present in rat cortical neurones. *J Physiol* 1995; 488:319-37; PMID:8568673
93. Pérez G, Toro L. Differential modulation of large-conductance KCa channels by PKA in pregnant and nonpregnant myometrium. *Am J Physiol* 1994; 266:C1459-63; PMID:7515569
94. Shipston MJ, Kelly JS, Antoni FA. Glucocorticoids block protein kinase A inhibition of calcium-activated potassium channels. *J Biol Chem* 1996; 271:9197-200; PMID:8621576; <http://dx.doi.org/10.1074/jbc.271.16.9197>
95. Zhou XB, Wang GX, Huneke B, Wieland T, Korth M. Pregnancy switches adrenergic signal transduction in rat and human uterine myocytes as probed by BKCa channel activity. *J Physiol* 2000; 524:339-52; PMID:10766916; <http://dx.doi.org/10.1111/j.1469-7793.2000.t01-1-00339.x>
96. Tian L, Coghill LS, McClafferty H, MacDonald SH, Antoni FA, Ruth P, Knaus HG, Shipston MJ. Distinct stoichiometry of BKCa channel tetramer phosphorylation specifies channel activation and inhibition by cAMP-dependent protein kinase. *Proc Natl Acad Sci U S A* 2004; 101:11897-902; PMID:15280542; <http://dx.doi.org/10.1073/pnas.0402590101>
97. Tian L, Duncan RR, Hammond MS, Coghill LS, Wen H, Rusinova R, Clark AG, Levitan IB, Shipston MJ. Alternative splicing switches potassium channel sensitivity to protein phosphorylation. *J Biol Chem* 2001; 276:7717-20; PMID:11244090; <http://dx.doi.org/10.1074/jbc.C000741200>
98. Dai S, Hall DD, Hell JW. Supramolecular assemblies and localized regulation of voltage-gated ion channels. *Physiol Rev* 2009; 89:411-52; PMID:19342611; <http://dx.doi.org/10.1152/physrev.00029.2007>
99. Yan J, Olsen JV, Park KS, Li W, Bildl W, Schulte U, Aldrich RW, Fakler B, Trimmer JS. Profiling the phospho-status of the BKCa channel alpha subunit in rat brain reveals unexpected patterns and complexity. *Mol Cell Proteomics* 2008; 7:2188-98; PMID:18573811; <http://dx.doi.org/10.1074/mcp.M800063-MCP200>
100. Wang YW, Ding JP, Xia XM, Lingle CJ. Consequences of the stoichiometry of Slo1 alpha and auxiliary beta subunits on functional properties of large-conductance Ca2+-activated K+ channels. *J Neurosci* 2002; 22:1550-61; PMID:11880485
101. Wu RS, Marx SO. The BK potassium channel in the vascular smooth muscle and kidney:  $\alpha$ - and  $\beta$ -subunits. *Kidney Int* 2010; 78:963-74; PMID:20861815; <http://dx.doi.org/10.1038/ki.2010.325>
102. Bai JP, Surguchev A, Navaratnam D.  $\beta$ 4-subunit increases Slo responsiveness to physiological Ca2+ concentrations and together with  $\beta$ 1 reduces surface expression of Slo in hair cells. *Am J Physiol Cell Physiol* 2011; 300:C435-46; PMID:21178105; <http://dx.doi.org/10.1152/ajpcell.00449.2010>
103. Lee US, Shi J, Cui J. Modulation of BK channel gating by the  $\beta$ 2 subunit involves both membrane-spanning and cytoplasmic domains of Slo1. *J Neurosci* 2010; 30:16170-9; PMID:21123563; <http://dx.doi.org/10.1523/JNEUROSCI.2323-10.2010>
104. Wu RS, Liu G, Zakharov SI, Chudasama N, Motoike H, Karlin A, Marx SO. Positions of  $\beta$ 2 and  $\beta$ 3 subunits in the large-conductance calcium- and voltage-activated BK potassium channel. *J Gen Physiol* 2013; 141:105-17; PMID:23277477; <http://dx.doi.org/10.1085/jgp.201210891>
105. Liu G, Niu X, Wu RS, Chudasama N, Yao Y, Jin X, Weinberg R, Zakharov SI, Motoike H, Marx SO, et al. Location of modulatory beta subunits in BK potassium channels. *J Gen Physiol* 2010; 135:449-59; PMID:20385746; <http://dx.doi.org/10.1085/jgp.201010417>
106. Morera FJ, Alioua A, Kundu P, Salazar M, Gonzalez C, Martinez AD, Stefani E, Toro L, Latorre R. The first transmembrane domain (TM1) of  $\beta$ 2-subunit binds to the transmembrane domain S1 of  $\alpha$ -subunit in BK potassium channels. *FEBS Lett* 2012; 586:2287-93; PMID:22710124; <http://dx.doi.org/10.1016/j.febslet.2012.05.066>
107. Orio P, Latorre R. Differential effects of beta 1 and beta 2 subunits on BK channel activity. *J Gen Physiol* 2005; 125:395-411; PMID:15767297; <http://dx.doi.org/10.1085/jgp.200409236>
108. Cox DH, Aldrich RW. Role of the beta1 subunit in large-conductance Ca(2+)-activated K(+) channel gating energetics. Mechanisms of enhanced Ca(2+) sensitivity. *J Gen Physiol* 2000; 116:411-32; PMID:10962017; <http://dx.doi.org/10.1085/jgp.116.3.411>
109. Feinberg-Zadek PL, Treistman SN. Beta-subunits are important modulators of the acute response to alcohol in human BK channels. *Alcohol Clin Exp Res* 2007; 31:737-44; PMID:17391339; <http://dx.doi.org/10.1111/j.1530-0277.2007.00371.x>
110. Valverde MA, Rojas P, Amigo J, Cosmelli D, Orio P, Bahamonde MI, Mann GE, Vergara C, Latorre R. Acute activation of Maxi-K channels (hSlo) by estradiol binding to the beta subunit. *Science* 1999; 285:1929-31; PMID:10489376; <http://dx.doi.org/10.1126/science.285.5435.1929>
111. Hoshi T, Tian Y, Xu R, Heinemann SH, Hou S. Mechanism of the modulation of BK potassium channel complexes with different auxiliary subunit compositions by the omega-3 fatty acid DHA. *Proc Natl Acad Sci U S A* 2013; 110:4822-7; PMID:23487786; <http://dx.doi.org/10.1073/pnas.1222003110>
112. Dworetzky SI, Boissard CG, Lum-Ragan JT, McKay MC, Post-Munson DJ, Trojnecki JT, Chang CP, Gribkoff VK. Phenotypic alteration of a human BK (hSlo) channel by hSlobeta subunit coexpression: changes in blocker sensitivity, activation/relaxation and inactivation kinetics, and protein kinase A modulation. *J Neurosci* 1996; 16:4543-50; PMID:8764643
113. McManus OB, Helms LM, Pallanck L, Ganetzky B, Swanson R, Leonard RJ. Functional role of the beta subunit of high conductance calcium-activated potassium channels. *Neuron* 1995; 14:645-50; PMID:7695911; [http://dx.doi.org/10.1016/0896-6273\(95\)90321-6](http://dx.doi.org/10.1016/0896-6273(95)90321-6)
114. Savalli N, Kondratiev A, de Quintana SB, Toro L, Olcese R. Modes of operation of the BKCa channel beta2 subunit. *J Gen Physiol* 2007; 130:117-31; PMID:17591990; <http://dx.doi.org/10.1085/jgp.200709803>
115. Wallner M, Meera P, Toro L. Molecular basis of fast inactivation in voltage and Ca2+-activated K+ channels: a transmembrane beta-subunit homolog. *Proc Natl Acad Sci U S A* 1999; 96:4137-42; PMID:10097176; <http://dx.doi.org/10.1073/pnas.96.7.4137>
116. Uebele VN, Lagrutta A, Wade T, Figueroa DJ, Liu Y, McKenna E, Austin CP, Bennett PB, Swanson R. Cloning and functional expression of two families of beta-subunits of the large conductance calcium-activated K+ channel. *J Biol Chem* 2000; 275:23211-8; PMID:10766764; <http://dx.doi.org/10.1074/jbc.M910187199>
117. Xia XM, Ding JP, Lingle CJ. Inactivation of BK channels by the NH2 terminus of the beta2 auxiliary subunit: an essential role of a terminal peptide segment of three hydrophobic residues. *J Gen Physiol* 2003; 121:125-48; PMID:12566540; <http://dx.doi.org/10.1085/jgp.20028667>
118. Benzinger GR, Xia XM, Lingle CJ. Direct observation of a preinactivated, open state in BK channels with beta2 subunits. *J Gen Physiol* 2006; 127:119-31; PMID:16418401; <http://dx.doi.org/10.1085/jgp.200509425>
119. Bentrop D, Beyermann M, Wissmann R, Fakler B. NMR structure of the "ball-and-chain" domain of KCNMB2, the beta 2-subunit of large conductance Ca2+ and voltage-activated potassium channels. *J Biol Chem* 2001; 276:42116-21; PMID:11517232; <http://dx.doi.org/10.1074/jbc.M107118200>
120. Zarei MM, Song M, Wilson RJ, Cox N, Colom LV, Knaus HG, Stefani E, Toro L. Endocytic trafficking signals in KCNMB2 regulate surface expression of a large conductance voltage and Ca(2+)-activated K+ channel. *Neuroscience* 2007; 147:80-9; PMID:17521822; <http://dx.doi.org/10.1016/j.neuroscience.2007.04.019>
121. Ding JP, Lingle CJ. Steady-state and closed-state inactivation properties of inactivating BK channels. *Biophys J* 2002; 82:2448-65; PMID:11964233; [http://dx.doi.org/10.1016/S0006-3495\(02\)75588-4](http://dx.doi.org/10.1016/S0006-3495(02)75588-4)
122. Hicks GA, Marrion NV. Ca2+-dependent inactivation of large conductance Ca2+-activated K+ (BK) channels in rat hippocampal neurones produced by pore block from an associated particle. *J Physiol* 1998; 508:721-34; PMID:9518728; <http://dx.doi.org/10.1111/j.1469-7793.1998.721bp.x>
123. Ohya S, Fujimori T, Kimura T, Yamamura H, Imaizumi Y. Novel spliced variants of large-conductance Ca(2+)-activated K(+)-channel  $\beta$ 2-subunit in human and rodent pancreas. *J Pharmacol Sci* 2010; 114:198-205; PMID:20859064; <http://dx.doi.org/10.1254/jphs.10159FP>
124. Brenner R, Jegla TJ, Wickenden A, Liu Y, Aldrich RW. Cloning and functional characterization of novel large conductance calcium-activated potassium channel beta subunits, hKCNMB3 and hKCNMB4. *J Biol Chem* 2000; 275:6453-61; PMID:10692449; <http://dx.doi.org/10.1074/jbc.275.9.6453>

125. Behrens R, Nolting A, Reimann F, Schwarz M, Waldschütz R, Pongs O. hKCNMB3 and hKCNMB4, cloning and characterization of two members of the large-conductance calcium-activated potassium channel beta subunit family. *FEBS Lett* 2000; 474:99-106; PMID:10828459; [http://dx.doi.org/10.1016/S0014-5793\(00\)01584-2](http://dx.doi.org/10.1016/S0014-5793(00)01584-2)
126. Xia XM, Ding JP, Zeng XH, Duan KL, Lingle CJ. Rectification and rapid activation at low Ca<sup>2+</sup> of Ca<sup>2+</sup>-activated, voltage-dependent BK currents: consequences of rapid inactivation by a novel beta subunit. *J Neurosci* 2000; 20:4890-903; PMID:10864947
127. Lingle CJ, Zeng XH, Ding JP, Xia XM. Inactivation of BK channels mediated by the NH(2) terminus of the beta3b auxiliary subunit involves a two-step mechanism: possible separation of binding and blockade. *J Gen Physiol* 2001; 117:583-606; PMID:11382808; <http://dx.doi.org/10.1085/jgp.117.6.583>
128. Zeng XH, Xia XM, Lingle CJ. Redox-sensitive extracellular gates formed by auxiliary beta subunits of calcium-activated potassium channels. *Nat Struct Biol* 2003; 10:448-54; PMID:12740608; <http://dx.doi.org/10.1038/nsb932>
129. Meera P, Wallner M, Toro L. A neuronal beta subunit (KCNMB4) makes the large conductance, voltage- and Ca<sup>2+</sup>-activated K<sup>+</sup> channel resistant to charybdotoxin and iberiotoxin. *Proc Natl Acad Sci U S A* 2000; 97:5562-7; PMID:10792058; <http://dx.doi.org/10.1073/pnas.100118597>
130. Ha TS, Heo MS, Park CS. Functional effects of auxiliary beta4-subunit on rat large-conductance Ca(2+)-activated K(+) channel. *Biophys J* 2004; 86:2871-82; PMID:15111404; [http://dx.doi.org/10.1016/S0006-3495\(04\)74339-8](http://dx.doi.org/10.1016/S0006-3495(04)74339-8)
131. Wang B, Rothberg BS, Brenner R. Mechanism of beta4 subunit modulation of BK channels. *J Gen Physiol* 2006; 127:449-65; PMID:16567466; <http://dx.doi.org/10.1085/jgp.200509436>
132. Brenner R, Chen QH, Vilaythong A, Toney GM, Noebels JL, Aldrich RW. BK channel beta4 subunit reduces dentate gyrus excitability and protects against temporal lobe seizures. *Nat Neurosci* 2005; 8:1752-9; PMID:16261134; <http://dx.doi.org/10.1038/nn1573>
133. Petrik D, Wang B, Brenner R. Modulation by the BK accessory beta4 subunit of phosphorylation-dependent changes in excitability of dentate gyrus granule neurons. *Eur J Neurosci* 2011; 34:695-704; PMID:21848922; <http://dx.doi.org/10.1111/j.1460-9568.2011.07799.x>
134. Chen L, Bi D, Tian L, McClafferty H, Steeb F, Ruth P, Knaus HG, Shipston MJ. Palmitoylation of the beta4-subunit regulates surface expression of large conductance calcium-activated potassium channel splice variants. *J Biol Chem* 2013; 288:13136-44; PMID:23504458; <http://dx.doi.org/10.1074/jbc.M113.461830>
135. Shrutli S, Urban-Ciecko J, Fitzpatrick JA, Brenner R, Bruchez MP, Barth AL. The brain-specific Beta4 subunit downregulates BK channel cell surface expression. *PLoS One* 2012; 7:e33429; PMID:22438928; <http://dx.doi.org/10.1371/journal.pone.0033429>
136. Gan G, Yi H, Chen M, Sun L, Li W, Wu Y, Ding J. Structural basis for toxin resistance of beta4-associated calcium-activated potassium (BK) channels. *J Biol Chem* 2008; 283:24177-84; PMID:18559348; <http://dx.doi.org/10.1074/jbc.M800179200>
137. Martin G, Puig S, Pietrzykowski A, Zadek P, Emery P, Treisman S. Somatic localization of a specific large-conductance calcium-activated potassium channel subtype controls compartmentalized ethanol sensitivity in the nucleus accumbens. *J Neurosci* 2004; 24:6563-72; PMID:15269268; <http://dx.doi.org/10.1523/JNEUROSCI.0684-04.2004>
138. Wynne PM, Puig SI, Martin GE, Treisman SN. Compartmentalized beta subunit distribution determines characteristics and ethanol sensitivity of somatic, dendritic, and terminal large-conductance calcium-activated potassium channels in the rat central nervous system. *J Pharmacol Exp Ther* 2009; 329:978-86; PMID:19321803; <http://dx.doi.org/10.1124/jpet.108.146175>
139. Martin GE, Hendrickson LM, Penta KL, Friesen RM, Pietrzykowski AZ, Tapper AR, Treisman SN. Identification of a BK channel auxiliary protein controlling molecular and behavioral tolerance to alcohol. *Proc Natl Acad Sci U S A* 2008; 105:17543-8; PMID:18981408; <http://dx.doi.org/10.1073/pnas.0801068105>
140. Grimm PR, Foutz RM, Brenner R, Sansom SC. Identification and localization of BK-beta subunits in the distal nephron of the mouse kidney. *Am J Physiol Renal Physiol* 2007; 293:F350-9; PMID:17459953; <http://dx.doi.org/10.1152/ajprenal.00018.2007>
141. Chen M, Petkov GV. Identification of large conductance calcium activated potassium channel accessory beta4 subunit in rat and mouse bladder smooth muscle. *J Urol* 2009; 182:374-81; PMID:19447431; <http://dx.doi.org/10.1016/j.juro.2009.02.109>
142. Nimigean CM, Magleby KL. The beta subunit increases the Ca<sup>2+</sup> sensitivity of large conductance Ca<sup>2+</sup>-activated potassium channels by retaining the gating in the bursting states. *J Gen Physiol* 1999; 113:425-40; PMID:10051518; <http://dx.doi.org/10.1085/jgp.113.3.425>
143. Nimigean CM, Magleby KL. Functional coupling of the beta(1) subunit to the large conductance Ca(2+)-activated K(+) channel in the absence of Ca(2+). Increased Ca(2+) sensitivity from a Ca(2+)-independent mechanism. *J Gen Physiol* 2000; 115:719-36; PMID:10828246; <http://dx.doi.org/10.1085/jgp.115.6.719>
144. Yang H, Zhang G, Shi J, Lee US, Delaloye K, Cui J. Subunit-specific effect of the voltage sensor domain on Ca<sup>2+</sup> sensitivity of BK channels. *Biophys J* 2008; 94:4678-87; PMID:18339745; <http://dx.doi.org/10.1529/biophysj.107.121590>
145. Hou P, Zeng W, Gan G, Lv C, Guo X, Zhang Z, Liu H, Wu Y, Yao J, Wei AD, et al. Inter-alpha/beta subunits coupling mediating pre-inactivation and augmented activation of BKCa(beta2). *Sci Rep* 2013; 3:1666; PMID:23588888; <http://dx.doi.org/10.1038/srep01666>
146. Yang CT, Zeng XH, Xia XM, Lingle CJ. Interactions between beta subunits of the KCNMB family and Slo3: beta4 selectively modulates Slo3 expression and function. *PLoS One* 2009; 4:e6135; PMID:19578543; <http://dx.doi.org/10.1371/journal.pone.0006135>
147. Gruslova A, Semenov I, Wang B. An extracellular domain of the accessory beta1 subunit is required for modulating BK channel voltage sensor and gate. *J Gen Physiol* 2012; 139:57-67; PMID:22155735; <http://dx.doi.org/10.1085/jgp.201110698>
148. King JT, Lovell PV, Rishniw M, Kotlikoff MI, Zeeman ML, McCobb DP. Beta2 and beta4 subunits of BK channels confer differential sensitivity to acute modulation by steroid hormones. *J Neurophysiol* 2006; 95:2878-88; PMID:16436475; <http://dx.doi.org/10.1152/jn.01352.2005>
149. Yan J, Aldrich RW. LRRC26 auxiliary protein allows BK channel activation at resting voltage without calcium. *Nature* 2010; 466:513-6; PMID:20613726; <http://dx.doi.org/10.1038/nature09162>
150. Yan J, Aldrich RW. BK potassium channel modulation by leucine-rich repeat-containing proteins. *Proc Natl Acad Sci U S A* 2012; 109:7917-22; PMID:22547800; <http://dx.doi.org/10.1073/pnas.1205435109>
151. Yang C, Zeng XH, Zhou Y, Xia XM, Lingle CJ. LRRC52 (leucine-rich-repeat-containing protein 52), a testis-specific auxiliary subunit of the alkalization-activated Slo3 channel. *Proc Natl Acad Sci U S A* 2011; 108:19419-24; PMID:22084117; <http://dx.doi.org/10.1073/pnas.1111104108>
152. Hou S, Heinemann SH, Hoshi T. Modulation of BKCa channel gating by endogenous signaling molecules. *Physiology (Bethesda)* 2009; 24:26-35; PMID:19196649; <http://dx.doi.org/10.1152/physiol.00032.2008>
153. Tang XD, Xu R, Reynolds MF, Garcia ML, Heinemann SH, Hoshi T. Haem can bind to and inhibit mammalian calcium-dependent Slo1 BK channels. *Nature* 2003; 425:531-5; PMID:14523450; <http://dx.doi.org/10.1038/nature02003>
154. Jaggard JH, Li A, Parfenova H, Liu J, Umstot ES, Dopico AM, Leffler CW. Heme is a carbon monoxide receptor for large-conductance Ca<sup>2+</sup>-activated K<sup>+</sup> channels. *Circ Res* 2005; 97:805-12; PMID:16166559; <http://dx.doi.org/10.1161/01.RES.0000186180.47148.7b>
155. Williams SE, Brazier SP, Baban N, Telezhkin V, Müller CT, Riccardi D, Kemp PJ. A structural motif in the C-terminal tail of slo1 confers carbon monoxide sensitivity to human BK Ca channels. *Pflugers Arch* 2008; 456:561-72; PMID:18180950; <http://dx.doi.org/10.1007/s00424-007-0439-4>
156. Horrigan FT, Heinemann SH, Hoshi T. Heme regulates allosteric activation of the Slo1 BK channel. *J Gen Physiol* 2005; 126:7-21; PMID:15955873; <http://dx.doi.org/10.1085/jgp.200509262>
157. Yi L, Morgan JT, Ragsdale SW. Identification of a thiol/disulfide redox switch in the human BK channel that controls its affinity for heme and CO. *J Biol Chem* 2010; 285:20117-27; PMID:20427280; <http://dx.doi.org/10.1074/jbc.M110.116483>
158. Candia S, Garcia ML, Latorre R. Mode of action of iberiotoxin, a potent blocker of the large conductance Ca(2+)-activated K+ channel. *Biophys J* 1992; 63:583-90; PMID:1384740; [http://dx.doi.org/10.1016/S0006-3495\(92\)81630-2](http://dx.doi.org/10.1016/S0006-3495(92)81630-2)
159. Naini AA, Shimony E, Kozlowski E, Shaikh T, Dang W, Miller C. Interaction of Ca2(+)-activated K+ channels with refolded charybdotoxins mutated at a central interaction residue. *Neuropharmacology* 1996; 35:915-21; PMID:8938722; [http://dx.doi.org/10.1016/0028-3908\(96\)00112-8](http://dx.doi.org/10.1016/0028-3908(96)00112-8)
160. Crest M, Jacquet G, Gola M, Zerrouk H, Benslimane A, Rochat H, Mansuelle P, Martin-Eauclaire MF. Kaliotoxin, a novel peptidyl inhibitor of neuronal BK-type Ca(2+)-activated K+ channels characterized from *Androctonus mauretanicus mauretanicus* venom. *J Biol Chem* 1992; 267:1640-7; PMID:1730708
161. Knaus HG, McManus OB, Lee SH, Schmalhofer WA, Garcia-Calvo M, Helms LM, Sanchez M, Giangiacomo K, Reuben JP, Smith AB 3<sup>rd</sup>, et al. Tremorgenic indole alkaloids potentially inhibit smooth muscle high-conductance calcium-activated potassium channels. *Biochemistry* 1994; 33:5819-28; PMID:7514038; <http://dx.doi.org/10.1021/bi00185a021>
162. Vergara C, Moczydlowski E, Latorre R. Conduction, Blockade and Gating in a Ca-activated K Channel Incorporated into Planar Lipid Bilayers. *Biophys J* 1984; 45:73-6; PMID:19431572; [http://dx.doi.org/10.1016/S0006-3495\(84\)84114-4](http://dx.doi.org/10.1016/S0006-3495(84)84114-4)
163. Iwatsuki N, Petersen OH. Action of tetraethylammonium on calcium-activated potassium channels in pig pancreatic acinar cells studied by patch-clamp single-channel and whole-cell current recording. *J Membr Biol* 1985; 86:139-44; PMID:2411930; <http://dx.doi.org/10.1007/BF01870780>
164. Yellen G. Ionic permeation and blockade in Ca<sup>2+</sup>-activated K<sup>+</sup> channels of bovine chromaffin cells. *J Gen Physiol* 1984; 84:157-86; PMID:6092514; <http://dx.doi.org/10.1085/jgp.84.2.157>



165. Lagrutta AA, Shen KZ, Rivard A, North RA, Adelman JP. Aromatic residues affecting permeation and gating in dSlo BK channels. *Pflugers Arch* 1998; 435:731-9; PMID:9479027; <http://dx.doi.org/10.1007/s004240050575>
166. Heginbotham L, MacKinnon R. The aromatic binding site for tetraethylammonium ion on potassium channels. *Neuron* 1992; 8:483-91; PMID:1550673; [http://dx.doi.org/10.1016/0896-6273\(92\)90276-J](http://dx.doi.org/10.1016/0896-6273(92)90276-J)
167. Gribkoff VK, Lum-Ragan JT, Boissard CG, Post-Munson DJ, Meanwell NA, Starrett JE Jr., Kozlowski ES, Romine JL, Trojnecki JT, McKay MC, et al. Effects of channel modulators on cloned large-conductance calcium-activated potassium channels. *Mol Pharmacol* 1996; 50:206-17; PMID:8700114
168. Bentzen BH, Nardi A, Calloe K, Madsen LS, Olesen SP, Grunnet M. The small molecule NS11021 is a potent and specific activator of Ca<sup>2+</sup>-activated big-conductance K<sup>+</sup> channels. *Mol Pharmacol* 2007; 72:1033-44; PMID:17636045; <http://dx.doi.org/10.1124/mol.107.038331>
169. Nelson MT, Quayle JM. Physiological roles and properties of potassium channels in arterial smooth muscle. *Am J Physiol* 1995; 268:C799-822; PMID:7733230
170. Brayden JE. Potassium channels in vascular smooth muscle. *Clin Exp Pharmacol Physiol* 1996; 23:1069-76; PMID:8977162; <http://dx.doi.org/10.1111/j.1440-1681.1996.tb01172.x>
171. Hill MA, Yang Y, Ella SR, Davis MJ, Braun AP. Large conductance, Ca<sup>2+</sup>-activated K<sup>+</sup> channels (BKCa) and arteriolar myogenic signaling. *FEBS Lett* 2010; 584:2033-42; PMID:20178789; <http://dx.doi.org/10.1016/j.febslet.2010.02.045>
172. Harder DR, Narayanan J, Gebremedhin D. Pressure-induced myogenic tone and role of 20-HETE in mediating autoregulation of cerebral blood flow. *Am J Physiol Heart Circ Physiol* 2011; 300:H1557-65; PMID:21257913; <http://dx.doi.org/10.1152/ajpheart.01097.2010>
173. Mistry DK, Garland CJ. Nitric oxide (NO)-induced activation of large conductance Ca<sup>2+</sup>-dependent K<sup>+</sup> channels (BK(Ca)) in smooth muscle cells isolated from the rat mesenteric artery. *Br J Pharmacol* 1998; 124:1131-40; PMID:9720783; <http://dx.doi.org/10.1038/sj.bjpp.0701940>
174. Kuo JF. Guanosine 3':5'-monophosphate-dependent protein kinases in mammalian tissues. *Proc Natl Acad Sci U S A* 1974; 71:4037-41; PMID:4372603; <http://dx.doi.org/10.1073/pnas.71.10.4037>
175. Schmidt HHNO. NO<sub>2</sub>, CO and. OH. Endogenous soluble guanylyl cyclase-activating factors. *FEBS Lett* 1992; 307:102-7; PMID:1353461; [http://dx.doi.org/10.1016/0014-5793\(92\)80910-9](http://dx.doi.org/10.1016/0014-5793(92)80910-9)
176. Sanders DB, Kelley T, Larson D. The role of nitric oxide synthase/nitric oxide in vascular smooth muscle control. *Perfusion* 2000; 15:97-104; PMID:10789563; <http://dx.doi.org/10.1177/026765910001500203>
177. Féletou M. Calcium-activated potassium channels and endothelial dysfunction: therapeutic options? *Br J Pharmacol* 2009; 156:545-62; PMID:19187341; <http://dx.doi.org/10.1111/j.1476-5381.2009.00052.x>
178. Soto MA, González C, Lissi E, Vergara C, Latorre R. Ca<sup>2+</sup>-activated K<sup>+</sup> channel inhibition by reactive oxygen species. *Am J Physiol Cell Physiol* 2002; 282:C461-71; PMID:11832330; <http://dx.doi.org/10.1152/ajpcell.00167.2001>
179. Tang XD, Garcia ML, Heinemann SH, Hoshi T. Reactive oxygen species impair Slo1 BK channel function by altering cysteine-mediated calcium sensing. *Nat Struct Mol Biol* 2004; 11:171-8; PMID:14745441; <http://dx.doi.org/10.1038/nsmb725>
180. Santarelli LC, Chen J, Heinemann SH, Hoshi T. The beta1 subunit enhances oxidative regulation of large-conductance calcium-activated K<sup>+</sup> channels. *J Gen Physiol* 2004; 124:357-70; PMID:15452197; <http://dx.doi.org/10.1085/jgp.200409144>
181. Tanaka Y, Yamaki F, Koike K, Toro L. New insights into the intracellular mechanisms by which PG12 analogues elicit vascular relaxation: cyclic AMP-independent, Gs-protein mediated-activation of MaxiK channel. *Curr Med Chem Cardiovasc Hematol Agents* 2004; 2:257-65; PMID:15320791; <http://dx.doi.org/10.2174/1568016043356273>
182. Robertson BE, Schubert R, Hescheler J, Nelson MT. cGMP-dependent protein kinase activates Ca-activated K channels in cerebral artery smooth muscle cells. *Am J Physiol* 1993; 265:C299-303; PMID:8338137
183. Anwer K, Oberti C, Perez GJ, Perez-Reyes N, McDougall JK, Monga M, Sanborn BM, Stefani E, Toro L. Calcium-activated K<sup>+</sup> channels as modulators of human myometrial contractile activity. *Am J Physiol* 1993; 265:C976-85; PMID:8238323
184. Song M, Zhu N, Olcese R, Barila B, Toro L, Stefani E. Hormonal control of protein expression and mRNA levels of the MaxiK channel alpha subunit in myometrium. *FEBS Lett* 1999; 460:427-32; PMID:10556510; [http://dx.doi.org/10.1016/S0014-5793\(99\)01394-0](http://dx.doi.org/10.1016/S0014-5793(99)01394-0)
185. Snetkov VA, Hirst SJ, Ward JP. Ion channels in freshly isolated and cultured human bronchial smooth muscle cells. *Exp Physiol* 1996; 81:791-804; PMID:8889478
186. Liu X, Xu Y, Zhang Z, Ni W. K<sup>+</sup> channels and their effects on membrane potential in rat bronchial smooth muscle cells. *J Huazhong Univ Sci Technolog Med Sci* 2003; 23:141-4, 150; PMID:12973931; <http://dx.doi.org/10.1007/BF02859938>
187. Carl A, Bayguinov O, Shuttleworth CW, Ward SM, Sanders KM. Role of Ca<sup>2+</sup>-activated K<sup>+</sup> channels in electrical activity of longitudinal and circular muscle layers of canine colon. *Am J Physiol* 1995; 268:C619-27; PMID:7534981
188. Ohi Y, Yamamura H, Nagano N, Ohya S, Muraki K, Watanabe M, Imaizumi Y. Local Ca<sup>2+</sup> transients and distribution of BK channels and ryanodine receptors in smooth muscle cells of guinea-pig vas deferens and urinary bladder. *J Physiol* 2001; 534:313-26; PMID:11454953; <http://dx.doi.org/10.1111/j.1469-7793.2001.t013-000313.x>
189. Löhn M, Jessner W, Fürstenau M, Wellner M, Sorrentino V, Haller H, Luft FC, Gollasch M. Regulation of calcium sparks and spontaneous transient outward currents by RyR3 in arterial vascular smooth muscle cells. *Circ Res* 2001; 89:1051-7; PMID:11717163; <http://dx.doi.org/10.1161/hh2301.100250>
190. ZhuGe R, Sims SM, Tuft RA, Fogarty KE, Walsh JV Jr. Ca<sup>2+</sup> sparks activate K<sup>+</sup> and Cl<sup>-</sup> channels, resulting in spontaneous transient currents in guinea-pig tracheal myocytes. *J Physiol* 1998; 513:711-8; PMID:9824712; <http://dx.doi.org/10.1111/j.1469-7793.1998.711ba.x>
191. Herrera GM, Heppner TJ, Nelson MT. Voltage dependence of the coupling of Ca<sup>2+</sup> sparks to BK(Ca) channels in urinary bladder smooth muscle. *Am J Physiol Cell Physiol* 2001; 280:C481-90; PMID:11171567
192. Pozo MJ, Pérez GJ, Nelson MT, Mawe GM. Ca<sup>2+</sup> sparks and BK currents in gallbladder myocytes: role in CCK-induced response. *Am J Physiol Gastrointest Liver Physiol* 2002; 282:G165-74; PMID:11751170
193. Meredith AL, Thorneloe KS, Werner ME, Nelson MT, Aldrich RW. Overactive bladder and incontinence in the absence of the BK large conductance Ca<sup>2+</sup>-activated K<sup>+</sup> channel. *J Biol Chem* 2004; 279:36746-52; PMID:15184377; <http://dx.doi.org/10.1074/jbc.M405621200>
194. Crawford AC, Fettiplace R. An electrical tuning mechanism in turtle cochlear hair cells. *J Physiol* 1981; 312:377-412; PMID:7265000
195. Fuchs PA, Nagai T, Evans MG. Electrical tuning in hair cells isolated from the chick cochlea. *J Neurosci* 1988; 8:2460-7; PMID:3249237
196. Fettiplace R, Fuchs PA. Mechanisms of hair cell tuning. *Annu Rev Physiol* 1999; 61:809-34; PMID:10099711; <http://dx.doi.org/10.1146/annurev.physiol.61.1.809>
197. Jones EM, Gray-Keller M, Fettiplace R. The role of Ca<sup>2+</sup>-activated K<sup>+</sup> channel spliced variants in the tonotopic organization of the turtle cochlea. *J Physiol* 1999; 518:653-65; PMID:10420004; <http://dx.doi.org/10.1111/j.1469-7793.1999.0653p.x>
198. Navaratnam DS, Bell TJ, Tu TD, Cohen EL, Oberholtzer JC. Differential distribution of Ca<sup>2+</sup>-activated K<sup>+</sup> channel splice variants among hair cells along the tonotopic axis of the chick cochlea. *Neuron* 1997; 19:1077-85; PMID:9390520; [http://dx.doi.org/10.1016/S0896-6273\(00\)80398-0](http://dx.doi.org/10.1016/S0896-6273(00)80398-0)
199. Rosenblatt KP, Sun ZP, Heller S, Hudspeth AJ. Distribution of Ca<sup>2+</sup>-activated K<sup>+</sup> channel isoforms along the tonotopic gradient of the chicken's cochlea. *Neuron* 1997; 19:1061-75; PMID:9390519; [http://dx.doi.org/10.1016/S0896-6273\(00\)80397-9](http://dx.doi.org/10.1016/S0896-6273(00)80397-9)
200. Duncan RK, Fuchs PA. Variation in large-conductance, calcium-activated potassium channels from hair cells along the chicken basilar papilla. *J Physiol* 2003; 547:357-71; PMID:12562934; <http://dx.doi.org/10.1113/jphysiol.2002.029785>
201. Ramanathan K, Michael TH, Fuchs PA. beta subunits modulate alternatively spliced, large conductance, calcium-activated potassium channels of avian hair cells. *J Neurosci* 2000; 20:1675-84; PMID:10684869
202. Ramanathan K, Fuchs PA. Modeling hair cell tuning by expression gradients of potassium channel beta subunits. *Biophys J* 2002; 82:64-75; PMID:11751296; [http://dx.doi.org/10.1016/S0006-3495\(02\)75374-5](http://dx.doi.org/10.1016/S0006-3495(02)75374-5)
203. Miranda-Rottmann S, Kozlov AS, Hudspeth AJ. Highly specific alternative splicing of transcripts encoding BK channels in the chicken's cochlea is a minor determinant of the tonotopic gradient. *Mol Cell Biol* 2010; 30:3646-60; PMID:20479127; <http://dx.doi.org/10.1128/MCB.00073-10>
204. Fernández-Fernández JM, Tomás M, Vázquez E, Orio P, Latorre R, Sentí M, Marrugat J, Valverde MA. Gain-of-function mutation in the KCNMB1 potassium channel subunit is associated with low prevalence of diastolic hypertension. *J Clin Invest* 2004; 113:1032-9; PMID:15057310
205. Tomás M, Vázquez E, Fernández-Fernández JM, Subirana I, Plata C, Heras M, Vila J, Marrugat J, Valverde MA, Sentí M. Genetic variation in the KCNMA1 potassium channel alpha subunit as risk factor for severe essential hypertension and myocardial infarction. *J Hypertens* 2008; 26:2147-53; PMID:18854754; <http://dx.doi.org/10.1097/HJH.0b013e3283103d8>
206. Seibold MA, Wang B, Eng C, Kumar G, Beckman KB, Sen S, Choudhry S, Meade K, Lenoir M, Watson HG, et al. An african-specific functional polymorphism in KCNMB1 shows sex-specific association with asthma severity. *Hum Mol Genet* 2008; 17:2681-90; PMID:18535015; <http://dx.doi.org/10.1093/hmg/ddn168>
207. McGahon MK, Dash DP, Arora A, Wall N, Dawicki J, Simpson DA, Scholfield CN, McGeown JG, Curtis TM. Diabetes downregulates large-conductance Ca<sup>2+</sup>-activated potassium beta 1 channel subunit in retinal arteriolar smooth muscle. *Circ Res* 2007; 100:703-11; PMID:17293477; <http://dx.doi.org/10.1161/01.RES.0000260182.36481.c9>
208. Du W, Bautista JF, Yang H, Diez-Sampedro A, You SA, Wang L, Kotagal P, Lüders HO, Shi J, Cui J, et al. Calcium-sensitive potassium channelopathy in human epilepsy and paroxysmal movement disorder. *Nat Genet* 2005; 37:733-8; PMID:15937479; <http://dx.doi.org/10.1038/ng1585>



209. Lorenz S, Heils A, Kasper JM, Sander T. Allelic association of a truncation mutation of the KCNMB3 gene with idiopathic generalized epilepsy. *Am J Med Genet B Neuropsychiatr Genet* 2007; 144B:10-3; PMID:16958040; <http://dx.doi.org/10.1002/ajmg.b.30369>
210. Yang J, Krishnamoorthy G, Saxena A, Zhang G, Shi J, Yang H, Delaloye K, Sept D, Cui J. An epilepsy/dyskinesia-associated mutation enhances BK channel activation by potentiating Ca<sup>2+</sup> sensing. *Neuron* 2010; 66:871-83; PMID:20620873; <http://dx.doi.org/10.1016/j.neuron.2010.05.009>
211. Liu X, Chang Y, Reinhart PH, Sontheimer H, Chang Y. Cloning and characterization of glioma BK, a novel BK channel isoform highly expressed in human glioma cells. *J Neurosci* 2002; 22:1840-9; PMID:11880513
212. Khaitan D, Sankpal UT, Weksler B, Meister EA, Romero IA, Couraud PO, Ningaraj NS. Role of KCNMA1 gene in breast cancer invasion and metastasis to brain. *BMC Cancer* 2009; 9:258; PMID:19640305; <http://dx.doi.org/10.1186/1471-2407-9-258>
213. Brayden JE, Nelson MT. Regulation of arterial tone by activation of calcium-dependent potassium channels. *Science* 1992; 256:532-5; PMID:1373909; <http://dx.doi.org/10.1126/science.1373909>
214. Brenner R, Peréz GJ, Bonev AD, Eckman DM, Kosik JC, Wiler SW, Patterson AJ, Nelson MT, Aldrich RW. Vasoregulation by the beta1 subunit of the calcium-activated potassium channel. *Nature* 2000; 407:870-6; PMID:11057658; <http://dx.doi.org/10.1038/35038011>
215. Beitelshes AL, Gong Y, Wang D, Schork NJ, Cooper-Dehoff RM, Langaee TY, Shriver MD, Sadee W, Knot HJ, Pepine CJ, et al.; INVEST Investigators. KCNMB1 genotype influences response to verapamil SR and adverse outcomes in the International Verapamil SR/Trandolapril Study (INVEST). *Pharmacogenet Genomics* 2007; 17:719-29; PMID:17700361; <http://dx.doi.org/10.1097/FPC.0b013e32810f2e3c>
216. Sentí M, Fernández-Fernández JM, Tomás M, Vázquez E, Elosua R, Marrugat J, Valverde MA. Protective effect of the KCNMB1 E65K genetic polymorphism against diastolic hypertension in aging women and its relevance to cardiovascular risk. *Circ Res* 2005; 97:1360-5; PMID:16293791; <http://dx.doi.org/10.1161/01.RES.0000196557.93717.95>
217. Gollasch M, Tank J, Luft FC, Jordan J, Maass P, Krasko C, Sharma AM, Busjahn A, Bähring S. The BK channel beta1 subunit gene is associated with human baroreflex and blood pressure regulation. *J Hypertens* 2002; 20:927-33; PMID:12011654; <http://dx.doi.org/10.1097/00004872-200205000-00028>
218. Köhler R, Ruth P. Endothelial dysfunction and blood pressure alterations in K<sup>+</sup>-channel transgenic mice. *Pflugers Arch* 2010; 459:969-76; PMID:20349244; <http://dx.doi.org/10.1007/s00424-010-0819-z>
219. Lu T, Ye D, He T, Wang XL, Wang HL, Lee HC. Impaired Ca<sup>2+</sup>-dependent activation of large-conductance Ca<sup>2+</sup>-activated K<sup>+</sup> channels in the coronary artery smooth muscle cells of Zucker Diabetic Fatty rats. *Biophys J* 2008; 95:5165-77; PMID:18790848; <http://dx.doi.org/10.1529/biophysj.108.138339>
220. Wang RX, Shi HF, Chai Q, Wu Y, Sun W, Ji Y, Yao Y, Li KL, Zhang CY, Zheng J, et al. Molecular mechanisms of diabetic coronary dysfunction due to large conductance Ca<sup>2+</sup>-activated K<sup>+</sup> channel impairment. *Chin Med J (Engl)* 2012; 125:2548-55; PMID:22882938
221. Dong L, Zheng YM, Van Riper D, Rathore R, Liu QH, Singer HA, Wang YX. Functional and molecular evidence for impairment of calcium-activated potassium channels in type-1 diabetic cerebral artery smooth muscle cells. *J Cereb Blood Flow Metab* 2008; 28:377-86; PMID:17684520; <http://dx.doi.org/10.1038/sj.cjcbfm.9600536>
222. Rajan AS, Aguilar-Bryan L, Nelson DA, Yaney GC, Hsu WH, Kunze DL, Boyd AE 3<sup>rd</sup>. Ion channels and insulin secretion. *Diabetes Care* 1990; 13:340-63; PMID:1689632; <http://dx.doi.org/10.2337/diacare.13.3.340>
223. Semenov I, Wang B, Herlihy JT, Brenner R. BK channel beta1-subunit regulation of calcium handling and constriction in tracheal smooth muscle. *Am J Physiol Lung Cell Mol Physiol* 2006; 291:L802-10; PMID:16632519; <http://dx.doi.org/10.1152/ajplung.00104.2006>
224. Chang HY, Mitzner W. Sex differences in mouse models of asthma. *Can J Physiol Pharmacol* 2007; 85:1226-35; PMID:18066124; <http://dx.doi.org/10.1139/Y07-116>
225. Grimm PR, Irsik DL, Settles DC, Holtzclaw JD, Sansom SC. Hypertension of Kcnmb1<sup>-/-</sup> is linked to deficient K secretion and aldosteronism. *Proc Natl Acad Sci U S A* 2009; 106:11800-5; PMID:19556540; <http://dx.doi.org/10.1073/pnas.0904635106>
226. Grimm PR, Sansom SC. BK channels and a new form of hypertension. *Kidney Int* 2010; 78:956-62; PMID:20720523; <http://dx.doi.org/10.1038/ki.2010.272>
227. Chen Y, Salem RM, Rao F, Fung MM, Bhatnagar V, Pandey B, Mahata M, Waalen J, Nievergelt CM, Lipkowitz MS, et al. Common charge-shift mutation Glu65Lys in K<sup>+</sup> channel beta1-subunit KCNMB1: pleiotropic consequences for glomerular filtration rate and progressive renal disease. *Am J Nephrol* 2010; 32:414-24; PMID:20861615; <http://dx.doi.org/10.1159/000320131>
228. Kim EY, Choi KJ, Dryer SE. Nephtrin binds to the COOH terminus of a large-conductance Ca<sup>2+</sup>-activated K<sup>+</sup> channel isoform and regulates its expression on the cell surface. *Am J Physiol Renal Physiol* 2008; 295:F235-46; PMID:18480178; <http://dx.doi.org/10.1152/ajprenal.00140.2008>
229. Jin W, Sugaya A, Tsuda T, Ohguchi H, Sugaya E. Relationship between large conductance calcium-activated potassium channel and bursting activity. *Brain Res* 2000; 860:21-8; PMID:10727620; [http://dx.doi.org/10.1016/S0006-8993\(00\)01943-0](http://dx.doi.org/10.1016/S0006-8993(00)01943-0)
230. Faber ES, Sah P. Calcium-activated potassium channels: multiple contributions to neuronal function. *Neuroscientist* 2003; 9:181-94; PMID:15065814; <http://dx.doi.org/10.1177/1073858403009003011>
231. Díez-Sampedro A, Silverman WR, Bautista JF, Richerson GB. Mechanism of increased open probability by a mutation of the BK channel. *J Neurophysiol* 2006; 96:1507-16; PMID:16738211; <http://dx.doi.org/10.1152/jn.00461.2006>
232. Ermolinsky B, Arshadmansab MF, Pacheco Ojalora LF, Zarei MM, Garrido-Sanabria ER. Deficit of Kcnmb1 mRNA expression in the dentate gyrus of epileptic rats. *Neuroreport* 2008; 19:1291-4; PMID:18695509; <http://dx.doi.org/10.1097/WNR.0b013e3283094bb6>
233. Wu RS, Chudasama N, Zakharov SI, Doshi D, Motoike H, Liu G, Yao Y, Niu X, Deng SX, Landry DW, et al. Location of the beta 4 transmembrane helices in the BK potassium channel. *J Neurosci* 2009; 29:8321-8; PMID:19571123; <http://dx.doi.org/10.1523/JNEUROSCI.6191-08.2009>
234. Laumonier F, Roger S, Guérin P, Molinari F, M'rad R, Cahard D, Belhadj A, Halayem M, Persico AM, Elia M, et al. Association of a functional deficit of the BKCa channel, a synaptic regulator of neuronal excitability, with autism and mental retardation. *Am J Psychiatry* 2006; 163:1622-9; PMID:16946189; <http://dx.doi.org/10.1176/appi.ajp.163.9.1622>
235. Rüttiger L, Sausbier M, Zimmermann U, Winter H, Braig C, Engel J, Knirsch M, Arntz C, Langer P, Hirt B, et al. Deletion of the Ca<sup>2+</sup>-activated potassium (BK) alpha-subunit but not the BKbeta1-subunit leads to progressive hearing loss. *Proc Natl Acad Sci U S A* 2004; 101:12922-7; PMID:15328414; <http://dx.doi.org/10.1073/pnas.0402660101>
236. Enomoto K, Furuya K, Maeno T, Edwards C, Oka T. Oscillating activity of a calcium-activated K<sup>+</sup> channel in normal and cancerous mammary cells in culture. *J Membr Biol* 1991; 119:133-9; PMID:1710671; <http://dx.doi.org/10.1007/BF01871412>
237. Kraft R, Benndorf K, Patt S. Large conductance Ca(2+)-activated K(+) channels in human meningioma cells. *J Membr Biol* 2000; 175:25-33; PMID:10811965; <http://dx.doi.org/10.1007/s002320001052>
238. Ransom CB, Sontheimer H. BK channels in human glioma cells. *J Neurophysiol* 2001; 85:790-803; PMID:11160513
239. Siemen D, Loupatzsis C, Borecky J, Gulbins E, Lang F. Ca<sup>2+</sup>-activated K channel of the BK-type in the inner mitochondrial membrane of a human glioma cell line. *Biochem Biophys Res Commun* 1999; 257:549-54; PMID:10198249; <http://dx.doi.org/10.1006/bbrc.1999.0496>
240. Ransom CB, Liu X, Sontheimer H. BK channels in human glioma cells have enhanced calcium sensitivity. *Glia* 2002; 38:281-91; PMID:12007141; <http://dx.doi.org/10.1002/glia.10064>
241. Ouadid-Ahidouch H, Roudbaraki M, Ahidouch A, Delcourt P, Prevarskaya N. Cell-cycle-dependent expression of the large Ca<sup>2+</sup>-activated K<sup>+</sup> channels in breast cancer cells. *Biochem Biophys Res Commun* 2004; 316:244-51; PMID:15003537; <http://dx.doi.org/10.1016/j.bbrc.2004.02.041>
242. Oeggerli M, Tian Y, Ruiz C, Wijker B, Sauter G, Obermann E, Güth U, Zlobec I, Sausbier M, Kunzelmann K, et al. Role of KCNMA1 in breast cancer. *PLoS One* 2012; 7:e41664; PMID:22899999; <http://dx.doi.org/10.1371/journal.pone.0041664>
243. Bloch M, Ousingasawat J, Simon R, Schraml P, Gasser TC, Mihatsch MJ, Kunzelmann K, Bubendorf L. KCNMA1 gene amplification promotes tumor cell proliferation in human prostate cancer. *Oncogene* 2007; 26:2525-34; PMID:17146446; <http://dx.doi.org/10.1038/sj.onc.1210036>
244. Gessner G, Schönherr K, Soom M, Hansel A, Asim M, Baniahmad A, Derst C, Hoshi T, Heinemann SH. BKCa channels activating at resting potential without calcium in LNCaP prostate cancer cells. *J Membr Biol* 2005; 208:229-40; PMID:16604468; <http://dx.doi.org/10.1007/s00232-005-0830-z>